

**REQUEST FOR INFORMATION (RFI)
VA250-16-B-0589**

PROJECT NUMBER:	553-304	Please ensure that before submitting questions or requests for clarification that you thoroughly read the solicitation, specifications, drawings and other pertinent documents. When submitting questions on this project the Government requires contractors to specifically identify the specification and/or solicitation section(s) or drawing number(s) in reference to the question or request for clarification submitted. No question or request for clarification will be answered by the Government unless the above requirements are met. Failure to comply may prevent the Government from responding in a timely manner.	
PROJECT TITLE:	Renovate South Lobby		
PROJECT LOCATION:	Department of Veterans Affairs John D. Dingell, VA Medical Center 4646 John R. Street Detroit, MI 48201-1916		
SUBMITTED BY:	Antler Construction	City/State:	Canton, MI
PHONE NO.:	734-404-6459		

TO:

Kyle Lipper, Contracting Officer
Department of Veterans Affairs
Attn: 90 CSC
24 Frank Lloyd Wright Dr.
Lobby M, Suite M2200
Ann Arbor, MI 48105
Kyle.lipper@va.gov

RFI NO.:1	DATE:11/18/2016	SPEC/DWG. REFERENCE:
REPLY NEEDED BY:		

INFORMATION NEEDED:

1. The SDVOB performed work is 15% or 25%? **CO to respond SDVOSB performed work is 15%**
2. On G-001, it says that alternate 7 is to delete new benches and reuse the existing. There is no spec section for the new benches and C-102 says to install salvaged benches. Please advise. **Refer to attached Specification Section 323300**
3. Will we be able to make full use of the new parking lot? It looks like another contractor still has it. **It will be available.**
4. The plans say to salvage the bollards. You want us to reuse the existing ones, or are we salvaging them for the VA and then installing new ones? **Remove existing and install new. See attached sketch.**
5. Project area shown on G-001 is incorrect. **See attached revised key plan.**
6. Area 2 is to be all night and weekend work? **This area must remain open to the public during "open" hours.**
7. Everything in the site work, Area 1, is being removed and replaced with new. The print shows a temporary ADA ramp going in, but it appears to go to a landing that is being removed. What is the intent with the temporary ramp?
Ramp is to be provided during construction as a temporary emergency means of egress. It will be removed during construction when determined by the VA and Engineer.

REPLY:

Refer to comments above in red.

REPLY FROM: Gregg Jones, C2AE	DATE: November 30, 2016
ATTACHMENTS:	COPY TO:

SECTION 32 33 00 - SITE FURNISHINGS (Pre-Bid RFI Response)

PART 1 - GENERAL

1.1 SUMMARY

- A. *Section Includes:*
1. *Seating.*
 2. *Bicycle racks.*
 3. *Trash receptacles.*

1.2 ACTION SUBMITTALS

- A. *Product Data: For each type of product.*
- B. *Samples: For each exposed product and for each color and texture specified.*

1.3 CLOSEOUT SUBMITTALS

- A. *Maintenance data.*

PART 2 - PRODUCTS

2.1 SEATING

- A. *Provide bench by one of the following manufacturer's*
1. *Landscape Forms, Inc. "Scarborough" bench, 72 inches, backless, strap seat, surface mounted.*
 2. *Victor Stanley "RB-12" bench, 72 inches, backless, strap seat, surface mounted.*
 3. *Dumor, Inc. "Bench 164", 72 inches, backless, strap seat, surface mounted.*

2.2 MATERIALS

- A. *Steel and Iron: Free of surface blemishes and complying with the following:*
1. *Plates, Shapes, and Bars: ASTM A 36/A 36M.*
 2. *Steel Pipe: Standard-weight steel pipe complying with ASTM A 53/A 53M, or electric-resistance-welded pipe complying with ASTM A 135/A 135M.*
 3. *Tubing: Cold-formed steel tubing complying with ASTM A 500/A 500M.*

4. *Mechanical Tubing: Cold-rolled, electric-resistance-welded carbon or alloy steel tubing complying with ASTM A 513/A 513M, or steel tubing fabricated from steel complying with ASTM A 1011/A 1011M and complying with dimensional tolerances in ASTM A 500/A 500M; zinc coated internally and externally.*
 5. *Sheet: Commercial steel sheet complying with ASTM A 1011/A 1011M.*
 6. *Perforated Metal: From steel sheet not less than 0.075-inch (1.9-mm) nominal thickness; manufacturer's standard perforation pattern.*
 7. *Expanded Metal: Carbon-steel sheets, deburred after expansion, and complying with ASTM F 1267.*
 8. *Malleable-Iron Castings: ASTM A 47/A 47M, grade as recommended by fabricator for type of use intended.*
 9. *Gray-Iron Castings: ASTM A 48/A 48M, Class 200.*
- B. *Anchors, Fasteners, Fittings, and Hardware: Manufacturer's standard, corrosion-resistant-coated or noncorrodible materials.*
1. *Angle Anchors: For inconspicuously bolting legs of site furnishings to on-grade substrate; one per leg*
 2. *Antitheft Hold-Down Brackets: For securing site furnishings to substrate; two per unit.*
- C. *Nonshrink, Nonmetallic Grout: Premixed, factory-packaged, nonstaining, noncorrosive, nongaseous grout complying with ASTM C 1107/C 1107M; recommended in writing by manufacturer, for exterior applications.*
- D. *Erosion-Resistant Anchoring Cement: Factory-packaged, nonshrink, nonstaining, hydraulic-controlled expansion cement formulation for mixing with potable water at Project site to create pourable anchoring, patching, and grouting compound; resistant to erosion from water exposure without needing protection by a sealer or waterproof coating; recommended in writing by manufacturer, for exterior applications.*
- E. *Galvanizing: Where indicated for steel and iron components, provide the following protective zinc coating applied to components after fabrication:*
1. *Zinc-Coated Tubing: External, zinc with organic overcoat, consisting of a minimum of 0.9 oz./sq. ft. (0.27 kg/sq. m) of zinc after welding, a chromate conversion coating, and a clear, polymer film. Internal, same as external or consisting of 81 percent zinc pigmented coating, not less than 0.3 mil (0.0076 mm) thick.*
 2. *Hot-Dip Galvanizing: According to ASTM A 123/A 123M, ASTM A 153/A 153M, or ASTM A 924/A 924M.*

2.3 FABRICATION

- A. *Metal Components: Form to required shapes and sizes with true, consistent curves, lines, and angles. Separate metals from dissimilar materials to prevent electrolytic action.*

- B. *Welded Connections: Weld connections continuously. Weld solid members with full-length, full-penetration welds and hollow members with full-circumference welds. At exposed connections, finish surfaces smooth and blended, so no roughness or unevenness shows after finishing and welded surface matches contours of adjoining surfaces.*
- C. *Pipes and Tubes: Form simple and compound curves by bending members in jigs to produce uniform curvature for each repetitive configuration required; maintain cylindrical cross section of member throughout entire bend without buckling, twisting, cracking, or otherwise deforming exposed surfaces of handrail and railing components.*
- D. *Preservative-Treated Wood Components: Complete fabrication of treated items before treatment if possible. If cut after treatment, apply field treatment complying with AWWPA M4 to cut surfaces.*
- E. *Exposed Surfaces: Polished, sanded, or otherwise finished; all surfaces smooth, free of burrs, barbs, splinters, and sharpness; all edges and ends rolled, rounded, or capped.*
- F. *Factory Assembly: Factory assemble components to greatest extent possible to minimize field assembly. Clearly mark units for assembly in the field.*

2.4 STEEL AND GALVANIZED-STEEL FINISHES

- A. *Powder-Coat Finish: Manufacturer's standard polyester, powder-coat finish complying with finish manufacturer's written instructions for surface preparation, including pretreatment, application, baking, and minimum dry film thickness.*

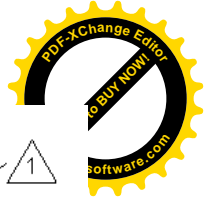
PART 3 - EXECUTION

3.1 INSTALLATION

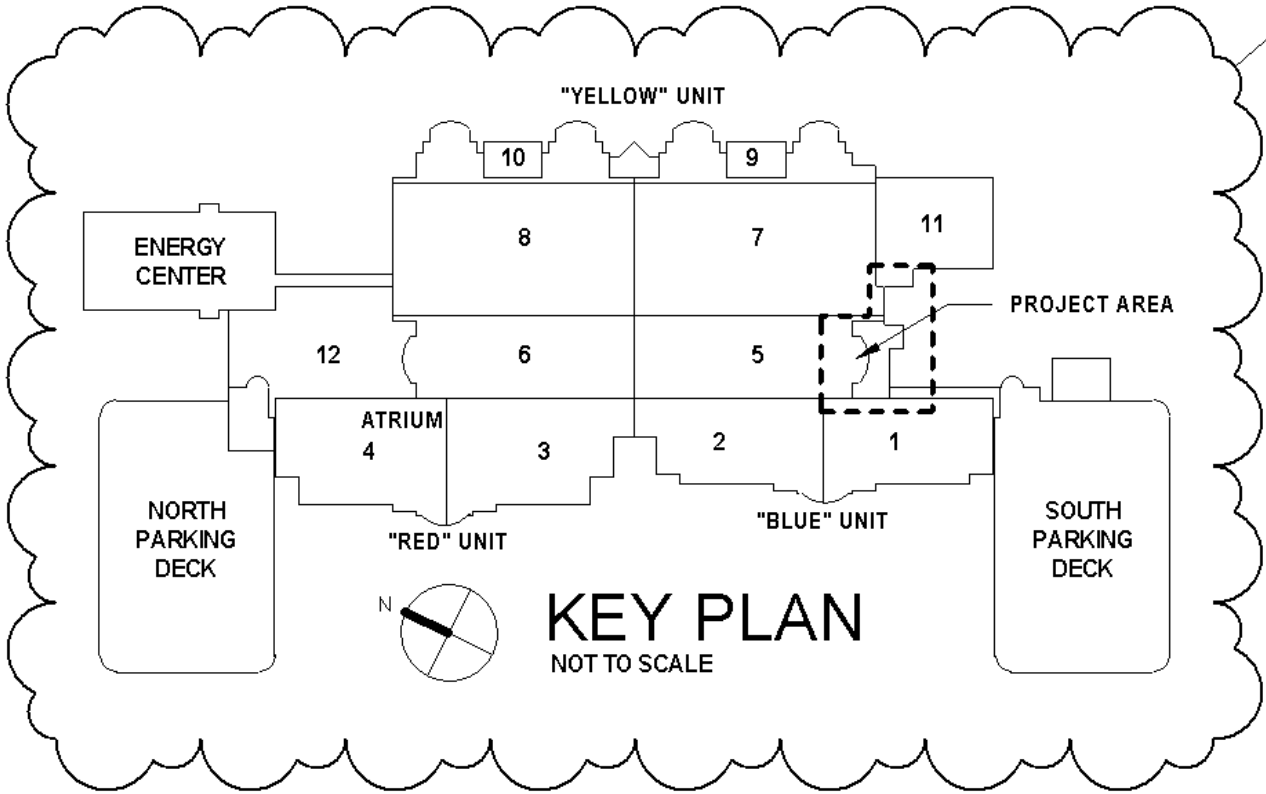
- A. *Comply with manufacturer's written installation instructions unless more stringent requirements are indicated. Complete field assembly of site furnishings where required.*
- B. *Unless otherwise indicated, install site furnishings after landscaping and paving have been completed.*
- C. *Install site furnishings level, plumb, true, and securely anchored at locations indicated on Drawings.*

END OF SECTION

THIS PAGE WAS INTENTIONALLY LEFT BLANK



Revised key plan.



1

