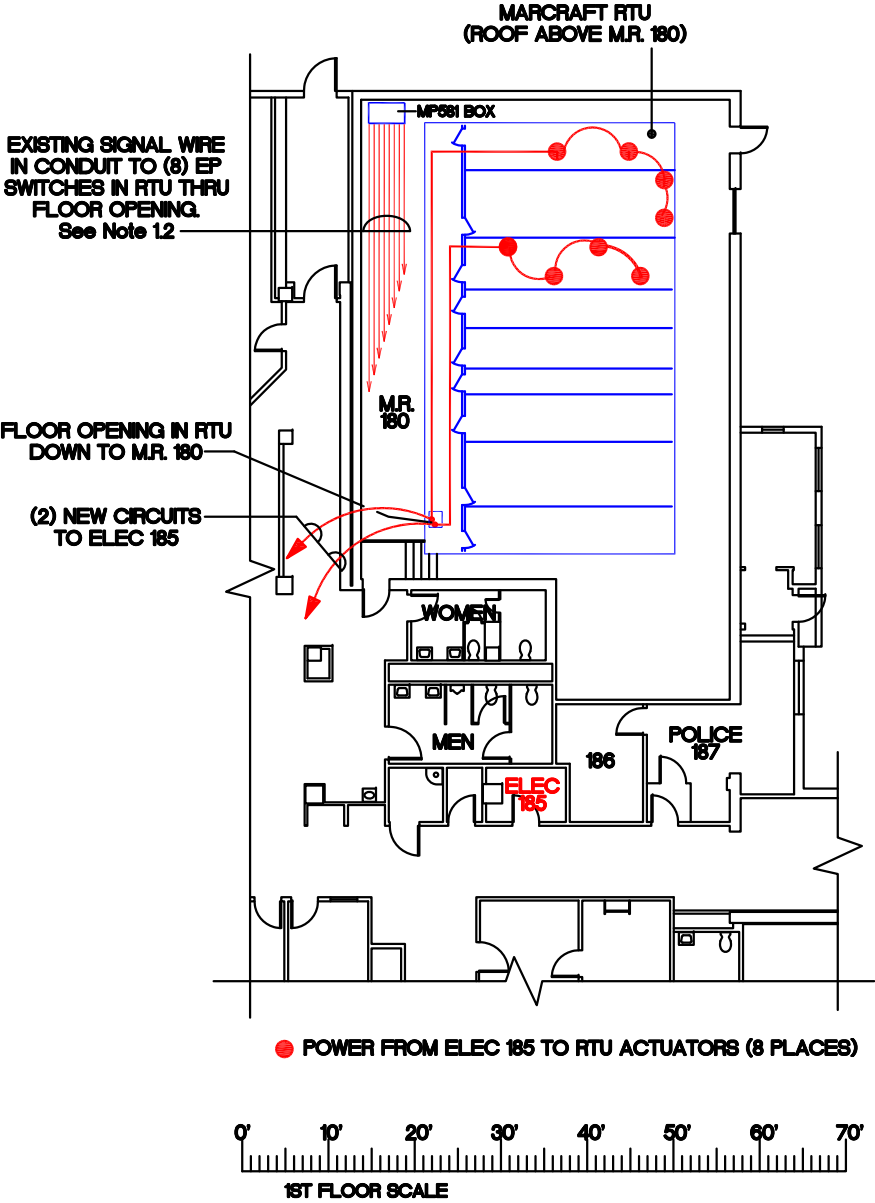



- 10 SCOPE OF WORK ELECTRICAL:
- 11 Install (2) new 120VAC Power Wiring Circuits in EMT or Rigid Conduit from Elec Rm 85 to feed (8) new Electric Damper Actuators, installed by Mechanical Contractor. See Mechanical Drawing for work by Mechanical Contractor. 6 ft Flex Conduit to final Actuator location is permitted.
- 12 Install (8) new Signal Wiring Circuits in EMT or Rigid Conduit from existing MP581 Box in MR 180 to (8) new Electric Actuators. Existing Signal Wiring may be re-used.
- 13 Demo all Electrical Wiring, Conduit, and Devices made obsolete by this work.
- 14 Take care not to demo any Electrical Wiring or devices in use.
- 20 CONDUCTORS:
- 21 Annealed copper, solid No 10 and smaller, stranded No 8 and larger. Power wiring, minimum No 12 and per N.E.C.
- 22 Insulation: THW, XHHW, or dual rated THHN-THWN, UL 44, 83, and 493.
- 23 Color (208/120): Phase A Black, Phase B Red, Phase C Blue, Neutral White.
- 30 GROUNDING CONDUCTORS:
- 31 UL 44 or UL 83 Insulated stranded copper, except No 10 AWG and smaller shall be solid copper.
- 32 Insulation color shall be continuous Green for all equipment grounding conductors, except No 4 AWG and larger shall be identified by N.E.C.
- 40 SPLICES AND JOINTS:
- 41 Shall be in accordance with UL 486A, UL 486B, UL 486D, and N.E.C.
- 42 Connectors shall be solderless, screw-on, pressure cable type, 600 Volt, 105 Deg C, integral insulation, approved for copper wires.
- 43 Integral insulator: Skirt to completely cover stripped wire.
- 5.0 CONDUIT:
- 5.1 Minimum size shall be 3/4" and per N.E.C.
- 5.2 Flexible Conduit (Commercial Greenfield) may only be used on connection to equipment, and shall be no more than 6 foot long.
- 5.3 Electric Metallic Tubing (EMT): UL 797. Fed Spec W-F-406, Steel or Malleable Iron only. Couplings and Connectors: Gland and ring compression type. Indent type connectors are prohibited. Die-cast, pressure-cast, zinc-alloy or "pot-metal" are prohibited.
- 5.4 Flexible Steel Conduit (Greenfield) Fittings: Fed Spec W-F-406 and UL 5. Steel or Malleable Iron only. Gland and ring Compression type couplings are prohibited.
- 5.5 Conduit Supports: Parts and hardware shall be zinc-coated or similar. Solid Masonry and Concrete Anchors: Self-drilling expansion shields or maching bolt expansion type.
- 5.6 Outlet, Junction, and Pull Boxes: UL-50, UL-514A, Galvanized Steel, Rustproof, Cast Metal where required by N.E.C.

CONTRACTOR SHALL MAN JOB SO THAT (3) CREWS OF MECHANICAL WORKERS ARE INSTALLING ACTUATORS AND LINKAGES IN ALL (3) COMPARTMENTS SIMULTANEOUSLY, FOLLOWED BY (3) CREWS OF ELECTRICAL WORKERS IN LIKE MANNER. RUN POWER AND SIGNAL WIRING UP TO EACH OF 3 COMPARTMENT DOORS PRIOR TO SHUT-DOWN. VA WILL ALSO RUN STATIC PRESSURE AND FAN SPEED TO TOLERABLE WORKING CONDITIONS. THIS IS TO REDUCE SUMMER A/C INTERRUPTIONS AS MUCH AS POSSIBLE.



			James E. Van Zandt Department Of Veterans Affairs Medical Center		Drawing Title <b>ELECTRICAL</b>		Project Title <b>REPLACE ACTUATORS AND LINKAGES</b>		Date		VAMC		
					Approved: Division Chief		Building Number		Checked			Project No.	
					Approved: Service Director		Location VAMC Altoona, Pennsylvania		DRAWING NO. E-1				
Revisions		Date								Dwg. 2 of 2			