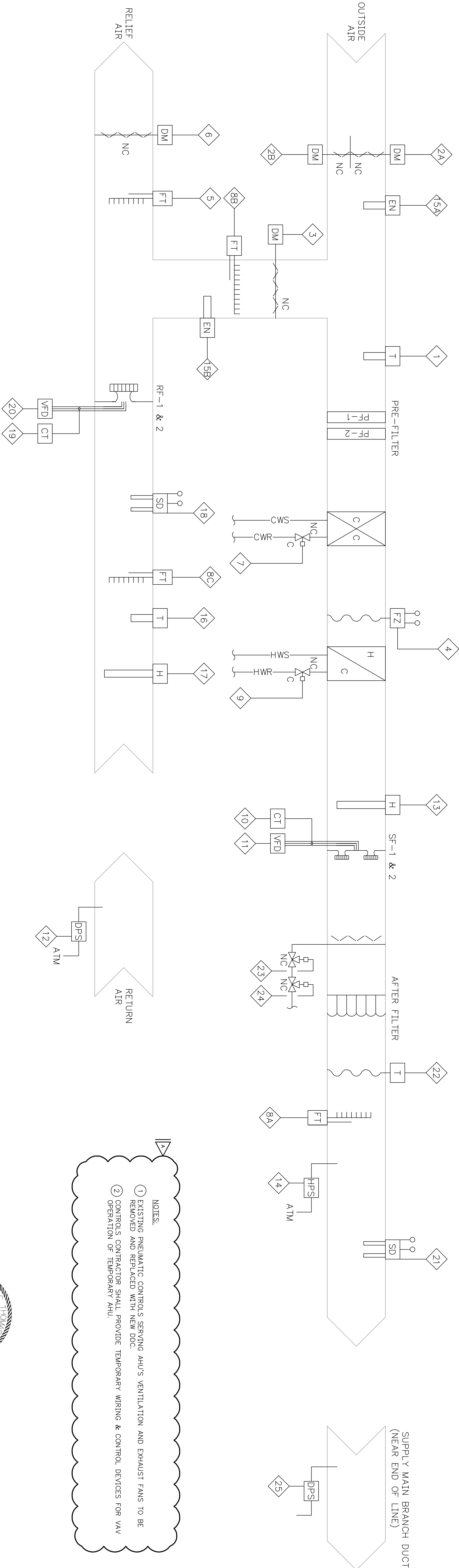


2 SMOKE DAMPER CONTROL DIAGRAM

| CONTROL LEGEND | | | |
|----------------|---|----------|---|
| [Symbol] | DAMPER WITH OPERATOR | [Symbol] | MODULATING VALVE (2-WAY CONTROL) |
| [Symbol] | CURRENT TRANSFORMER | [Symbol] | MODULATING VALVE (3-WAY CONTROL) |
| [Symbol] | ENTHALPY SENSOR | [Symbol] | TWO POSITION VALVE |
| [Symbol] | TEMPERATURE SENSOR | [Symbol] | SOLENOID AIR VALVE |
| [Symbol] | DUCT-MOUNTED TEMPERATURE SENSOR (AVERAGE) | [Symbol] | SOLENOID VALVE |
| [Symbol] | FREZE STAT | [Symbol] | VARIABLE FREQUENCY DRIVE |
| [Symbol] | AIR FILTER (PRE/FINAL AS INDICATED) | [Symbol] | FLOW ELEMENT / FLOW TRANSMITTER AIR |
| [Symbol] | HUMIDITY SENSOR | [Symbol] | SMOKE DETECTOR (FURNISHED AND WIRED BY ELECTRICAL CONTRACTOR, MOUNTED BY MECHANICAL CONTRACTOR) |
| [Symbol] | HYDRONIC HEATING COIL | [Symbol] | PLENUM (PLUG) FAN |
| [Symbol] | HYDRONIC COOLING COIL | [Symbol] | |
| [Symbol] | ANALOG OUTPUT | [Symbol] | |
| [Symbol] | ANALOG INPUT | [Symbol] | |
| [Symbol] | DIGITAL OUTPUT | [Symbol] | |
| [Symbol] | DIGITAL INPUT | [Symbol] | |
| [Symbol] | DAMPER MOTOR | [Symbol] | |
| [Symbol] | DIFFERENTIAL PRESSURE SWITCH | [Symbol] | |
| [Symbol] | HIGH PRESSURE LIMIT SWITCH | [Symbol] | |

| CONTROL POINTS SCHEDULE (AHU-1 & 2) | | |
|-------------------------------------|---|-------|
| POINT | DESCRIPTION | NOTES |
| 1 | MIXED AIR TEMPERATURE | |
| 2A | OUTDOOR AIR DAMPER | |
| 2B | MAINTAIN OUTDOOR AIR DAMPER | |
| 3 | RETURN DAMPER | |
| 4 | FREZE STAT LOW TEMPERATURE LIMIT SENSOR | |
| 5 | RELIEF AIR FLOW QUANTITY | |
| 6 | RELIEF DAMPER | |
| 7 | COOLING COIL CONTROL VALVE | |
| 8A, B & C | SUPPLY AIR FLOW QUANTITY | |
| 9 | HEATING COIL CONTROL VALVE | |
| 10 | SUPPLY FAN STATUS | |
| 11 | SUPPLY FAN SPEED CONTROL | |
| 12 | RETURN DUCT STATIC PRESSURE (STATUS) | |
| 13 | HI LIMIT HUMIDITY SENSOR | |
| 14 | SUPPLY DUCT STATIC PRESSURE | |
| 15A & B | ENTHALPY CONTROLLER, OUTSIDE AIR & RETURN AIR | |
| 16 | RETURN AIR TEMPERATURE | |
| 17 | RETURN DUCT HUMIDITY SENSOR | |
| 18 | RETURN AIR SMOKE DETECTOR | |
| 19 | RETURN FAN STATUS | |
| 20 | RETURN FAN SPEED CONTROL | |
| 21 | SUPPLY SMOKE DETECTOR | |
| 22 | DISCHARGE TEMPERATURE | |
| 23 | HUMIDIFIER VALVE CONTROL | |
| 24 | HUMIDIFIER POSITIVE SHUTTER ON/OFF | |
| 25 | SUPPLY DUCT STATIC PRESSURE SENSOR | |

GENERAL NOTE: CONTRACTOR AND CONTRACTOR'S SUB IS RESPONSIBLE FOR RECOMMENDING TIGHTEN TIGHTENING OF ALL DAMPERS AND VALVES TO MAINTAIN SYSTEM TIGHTNESS AND MINIMIZE AIR LEAKAGE TO ENSURE A COMPLETE, PROPERLY WORKING SYSTEM.



3 AHU CONTROL DIAGRAM

Revisions

Date

Tennessee Valley Healthcare System

MURRESBORO CAMPUS

Approved: --

Approved: --

Drawing Title

Project Title

HVAC CONTROLS

REPLACE ATTIC AHUS BUILDING 1

Approved: Facility Manager

Building Number

Created

Drawn

Approved: Director

Location

TMS - YORK CAMPUS

Date

01/20/2012

Project No.

626A4-11-203

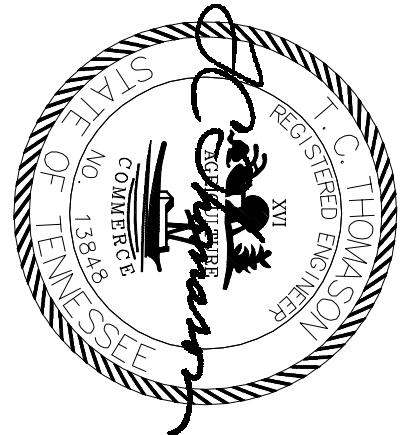
DRAWING NO.

1 - M 14

FILE NAME

10260202

Veterans Administration



CONSTRUCTION DOCUMENTS