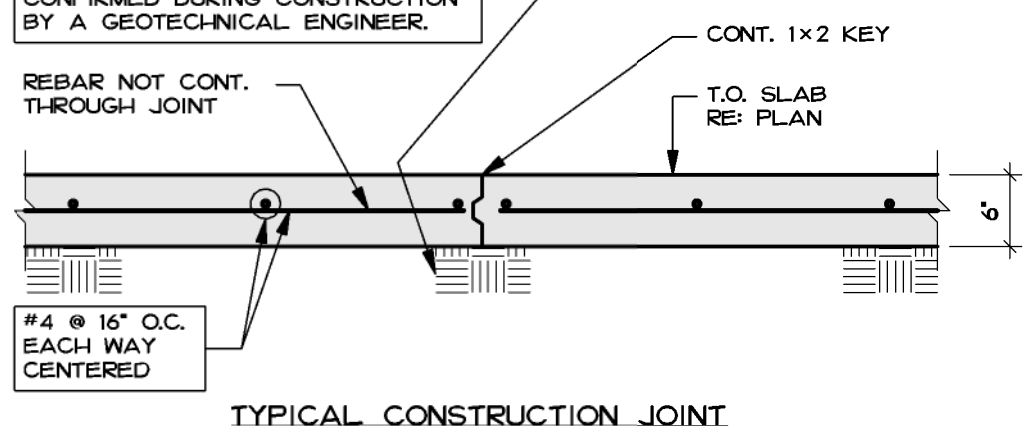
 Department of
Veterans Affairs

BOXED NOTES INDICATE TYPICAL NOTES

INDICATES (E) SUBGRADE
LOOSE MATERIAL MUST BE
MOISTURE CONDITIONED AND
RECOMPACTED TO 95% MODIFIED
STANDARD PROCTOR. THE
ASSUMED MINIMUM SOIL BEARING
PRESSURE OF 1500 PSF MUST BE
CONFIRMED DURING CONSTRUCTION
BY A GEOTECHNICAL ENGINEER.

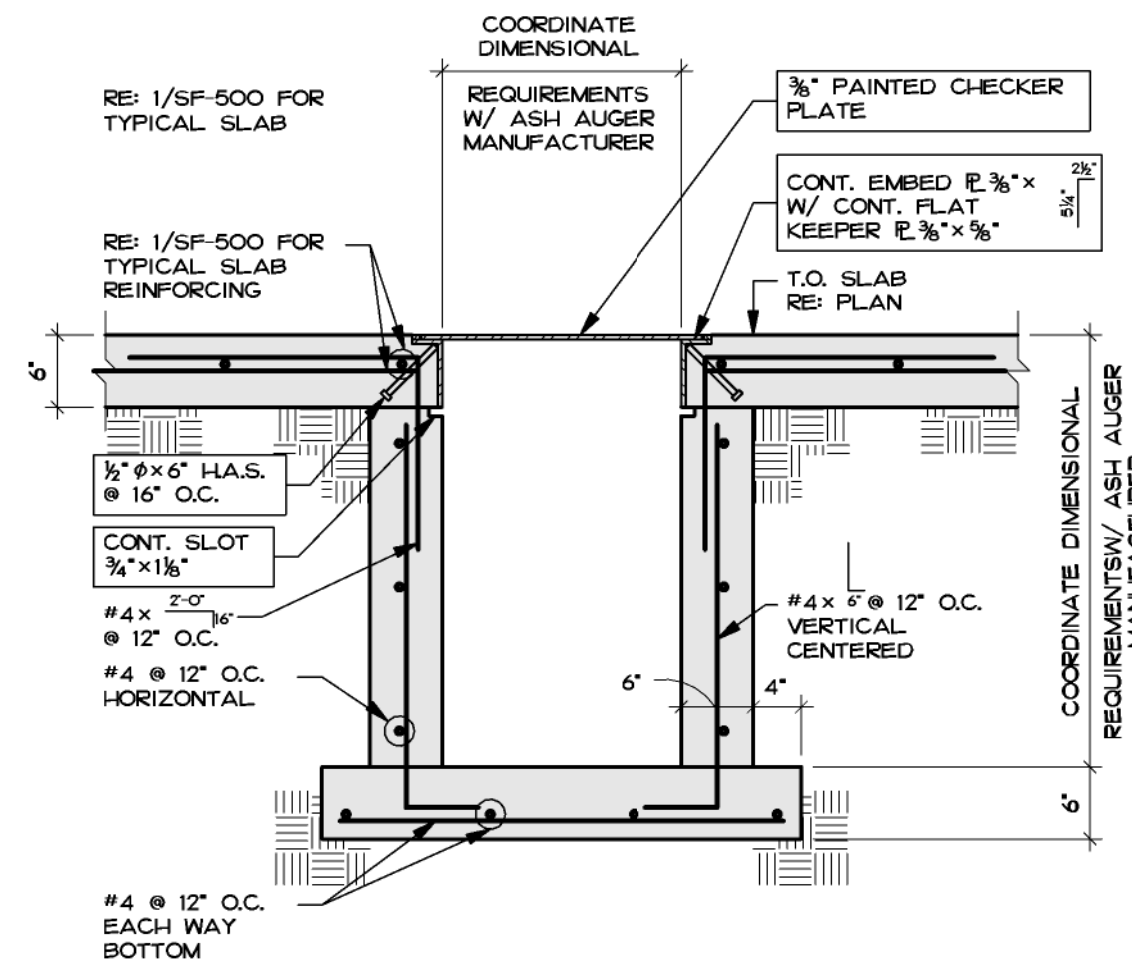


TYPICAL CONSTRUCTION JOINT

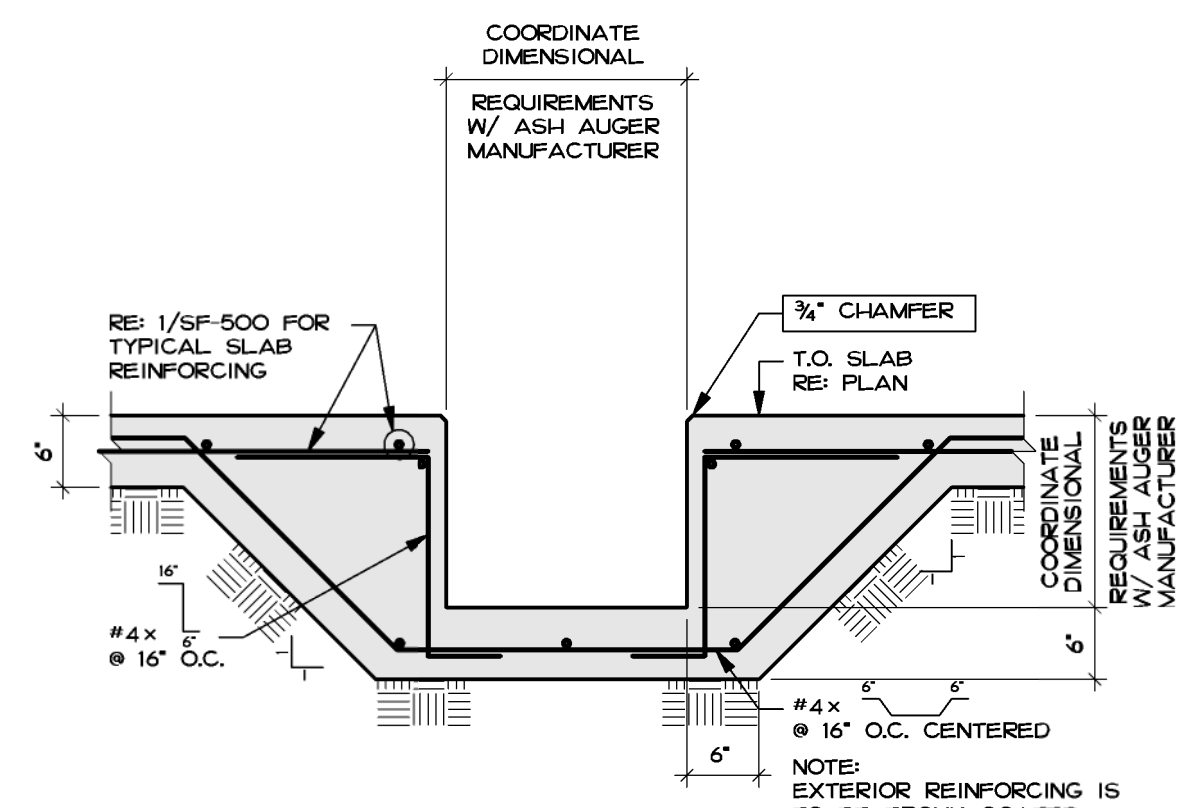
NOTES:
1. JOINTS MUST BE TOOLED OR SAW CUT AS
SOON AS THE SLAB CAN SUPPORT EQUIPMENT.
2. LOCATE AT COLUMN LINES AND MAXIMUM
SPACING OF APPROXIMATELY 12'-0\"/>

TYPICAL CONTROL JOINT

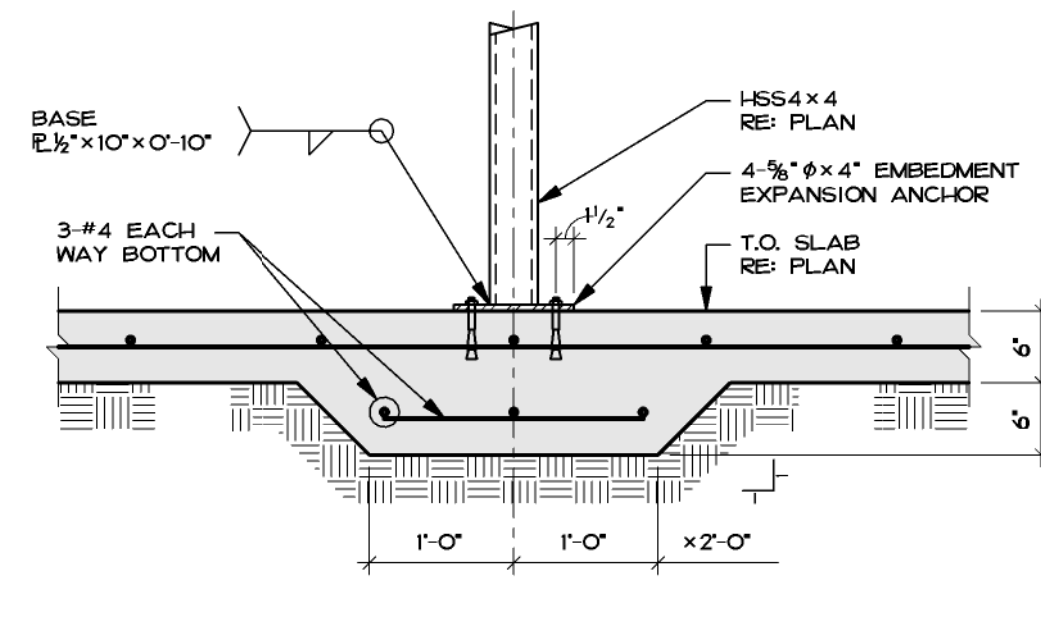
① 3/4\" = 1'-0\"



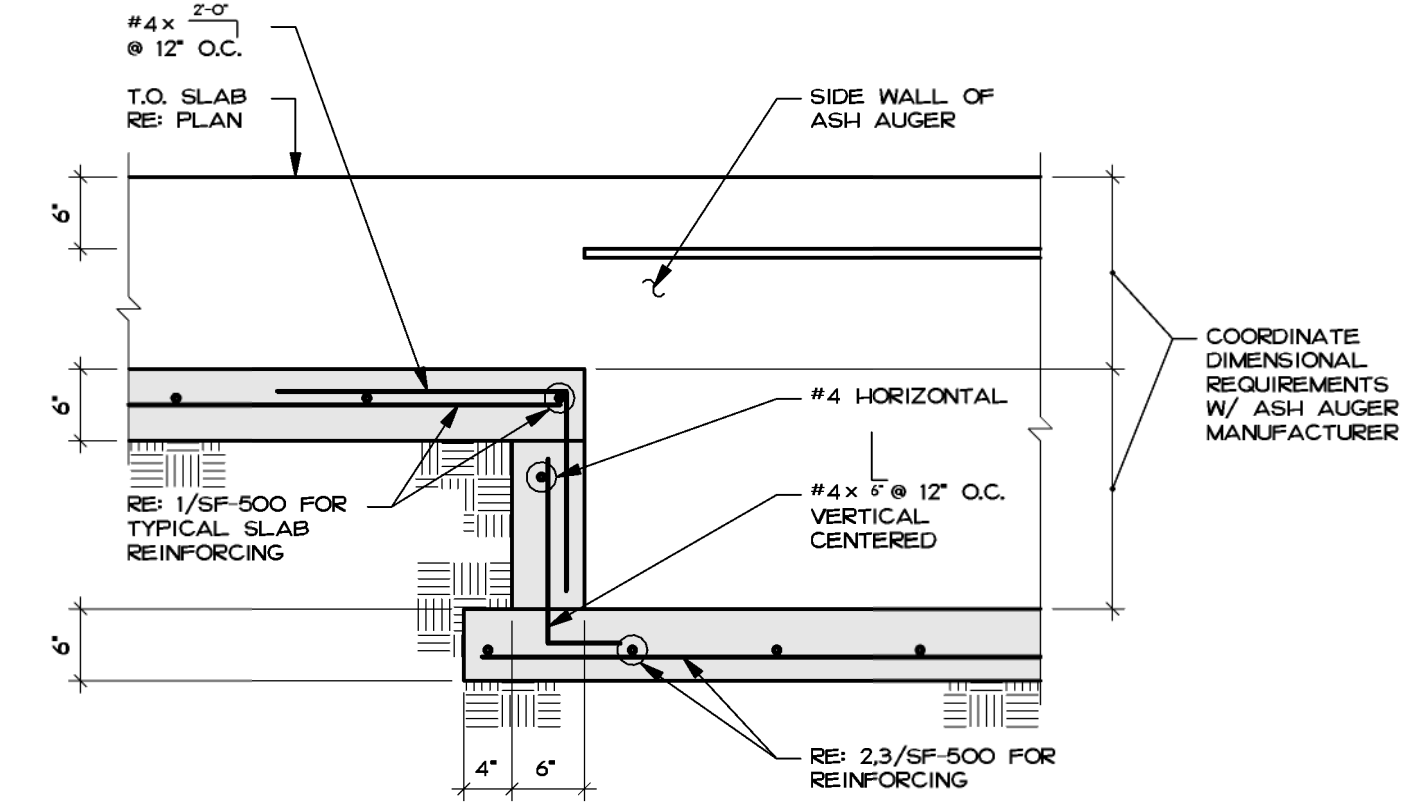
② DEEP ASH AUGER TRENCH 3/4\" = 1'-0\"



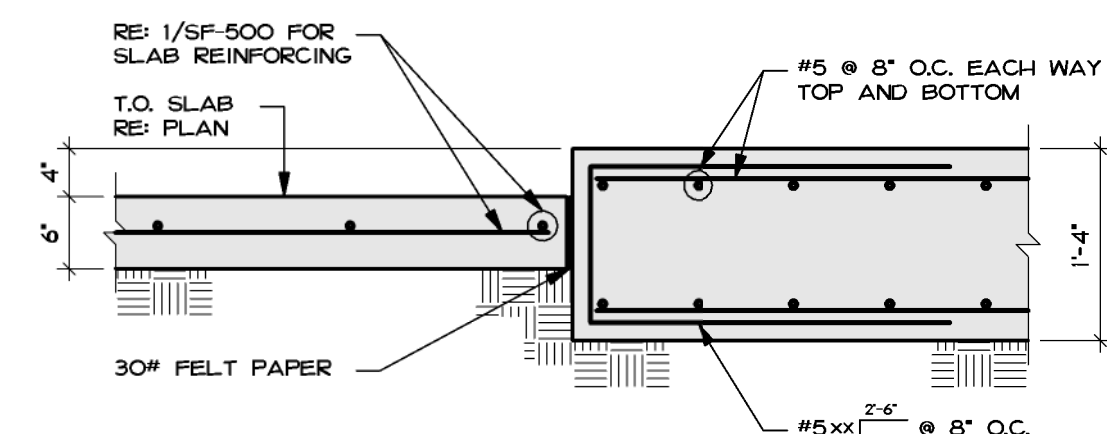
③ SHALLOW ASH AUGER TRENCH 3/4\" = 1'-0\"



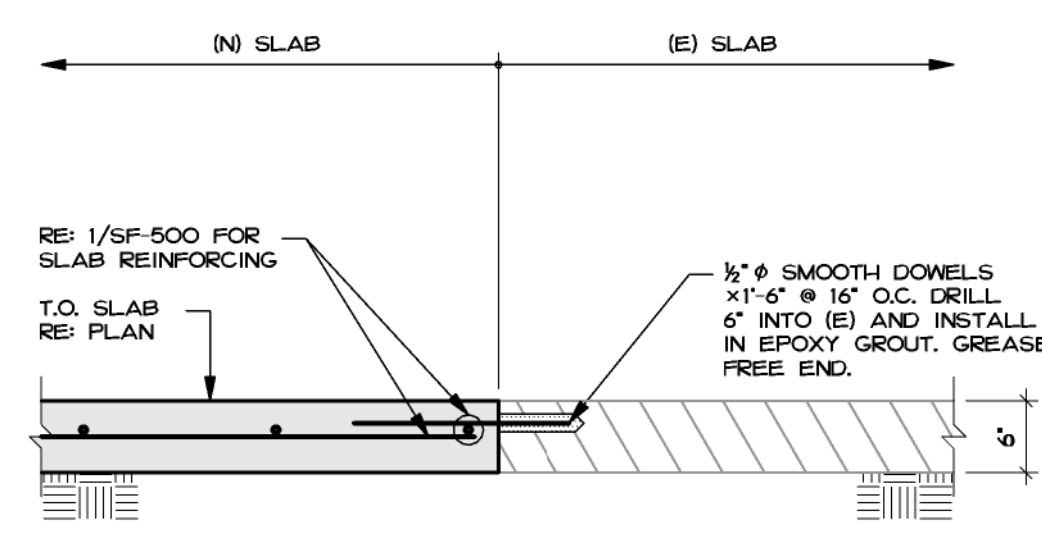
④ 3/4\" = 1'-0\"



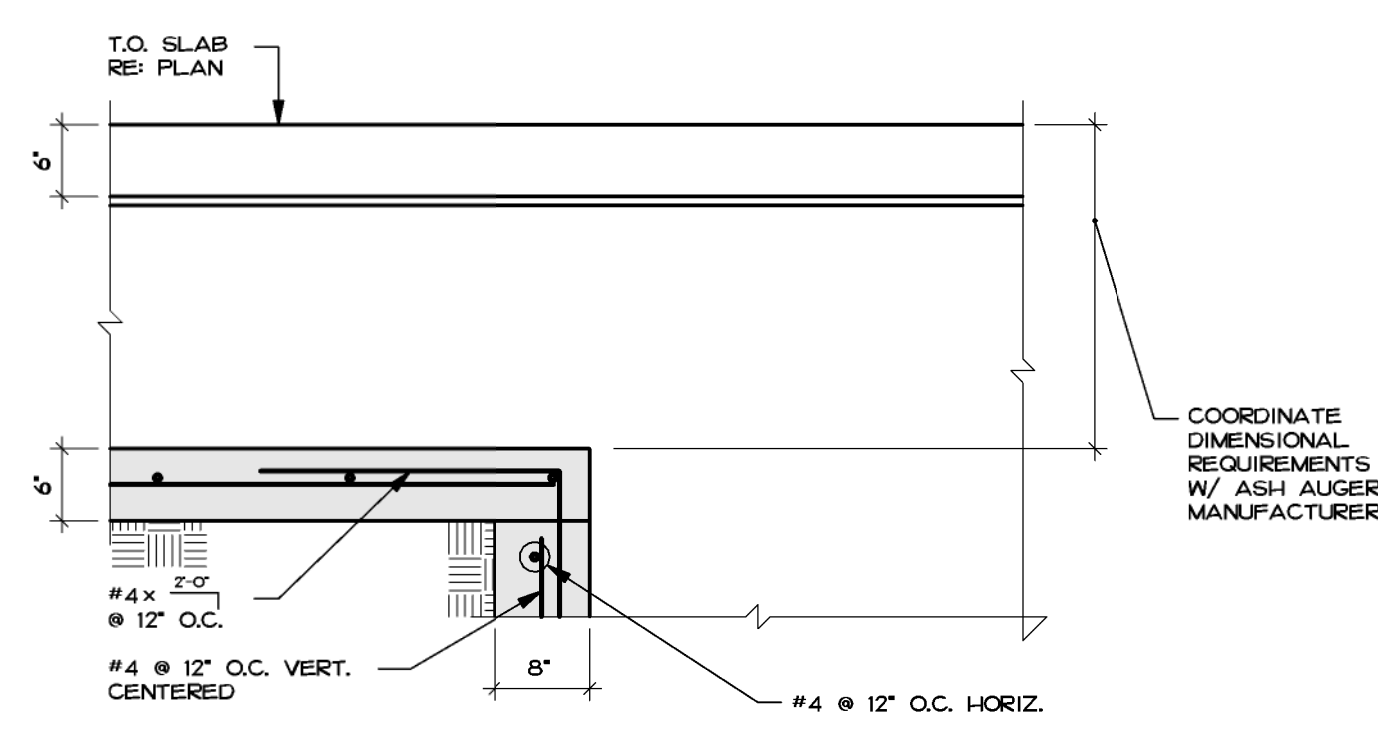
⑤ ASH AUGER TRENCH STEP 3/4\" = 1'-0\"



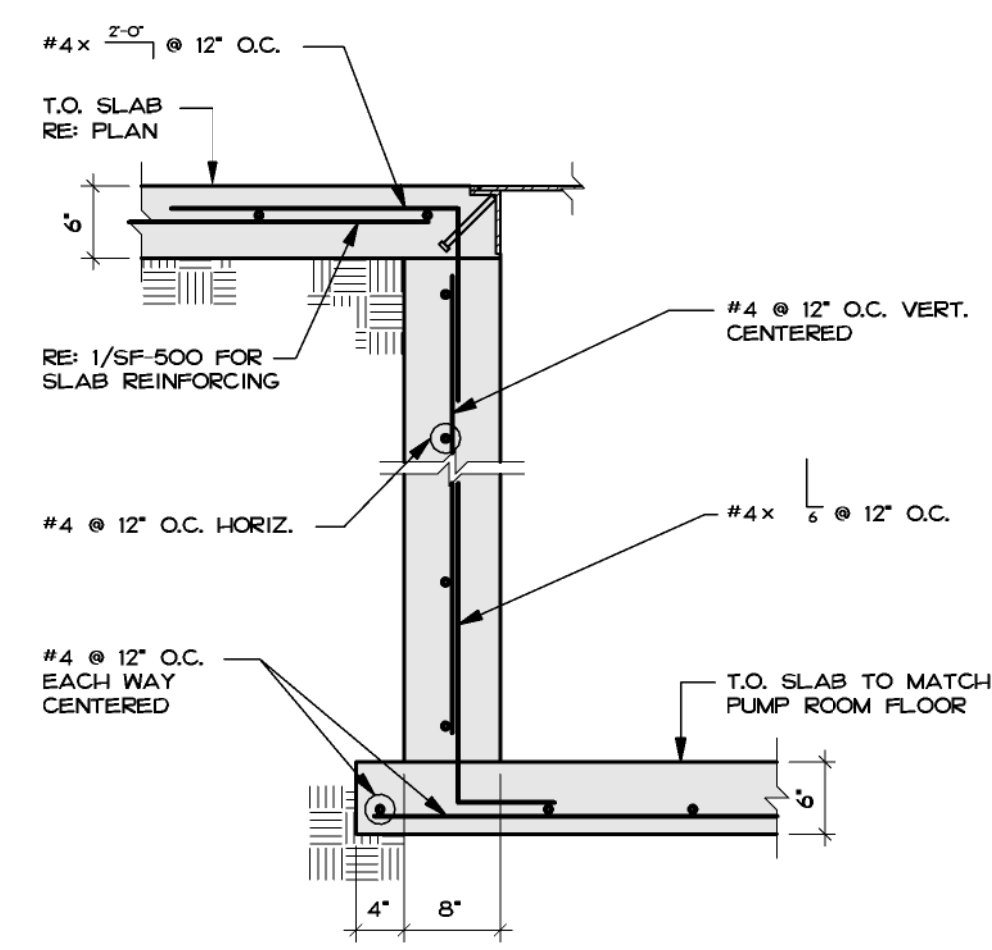
⑥ BOILER PAD 3/4\" = 1'-0\"



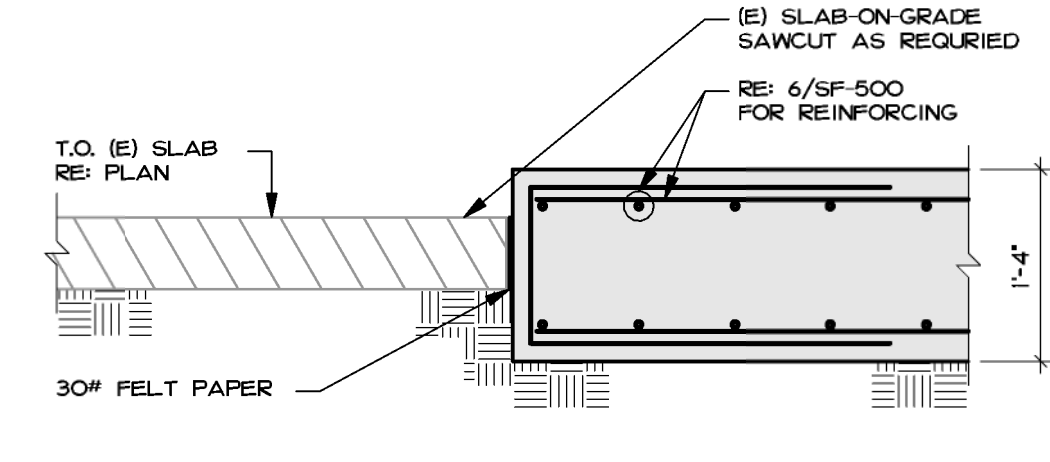
⑦ 3/4\" = 1'-0\"



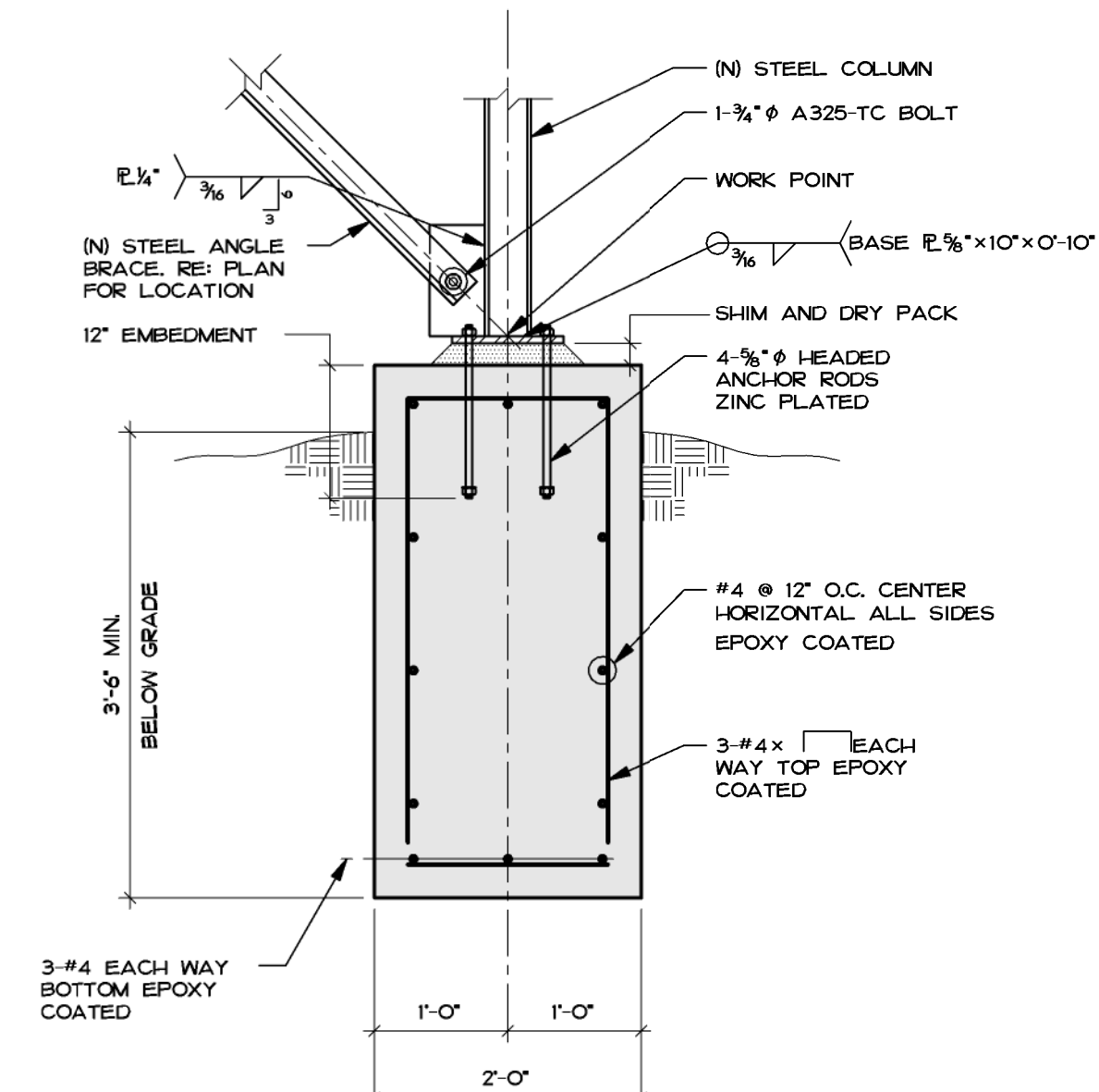
⑧ ASH AUGER STEP AT
BUCKET ELEVATOR PIT 3/4\" = 1'-0\"



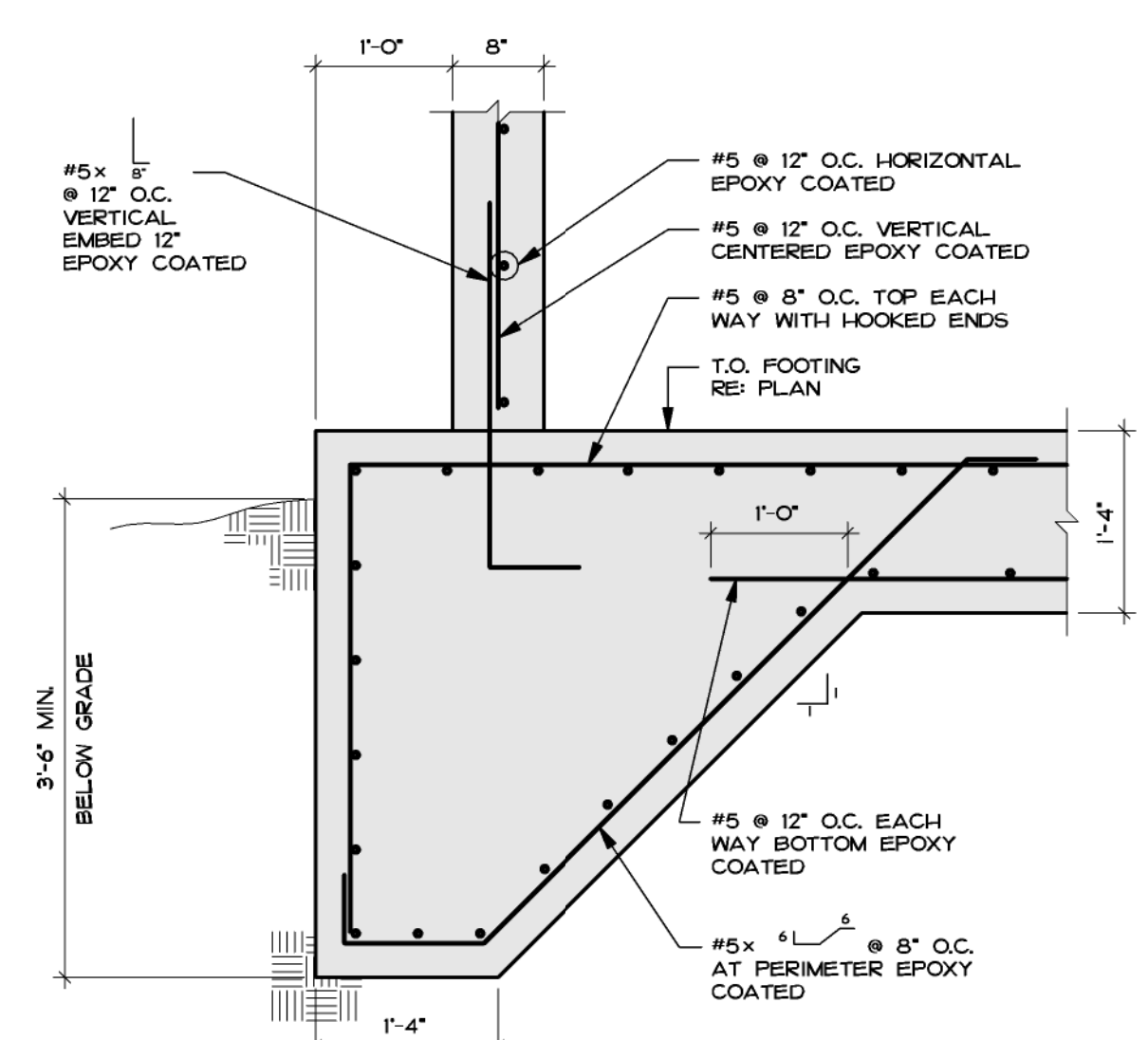
⑨ 3/4\" = 1'-0\"



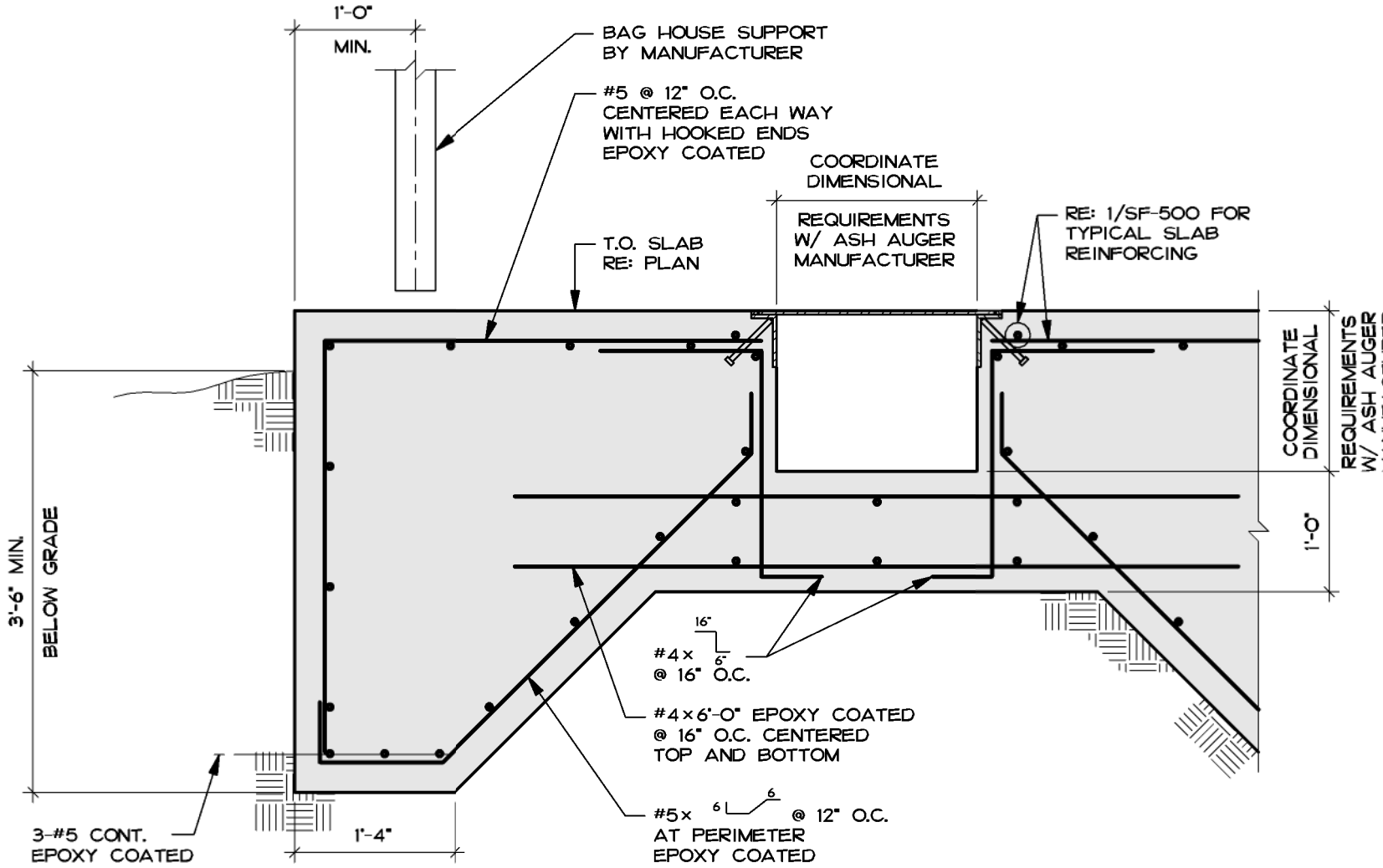
⑩ EMERGENCY GENERATOR 3/4\" = 1'-0\"



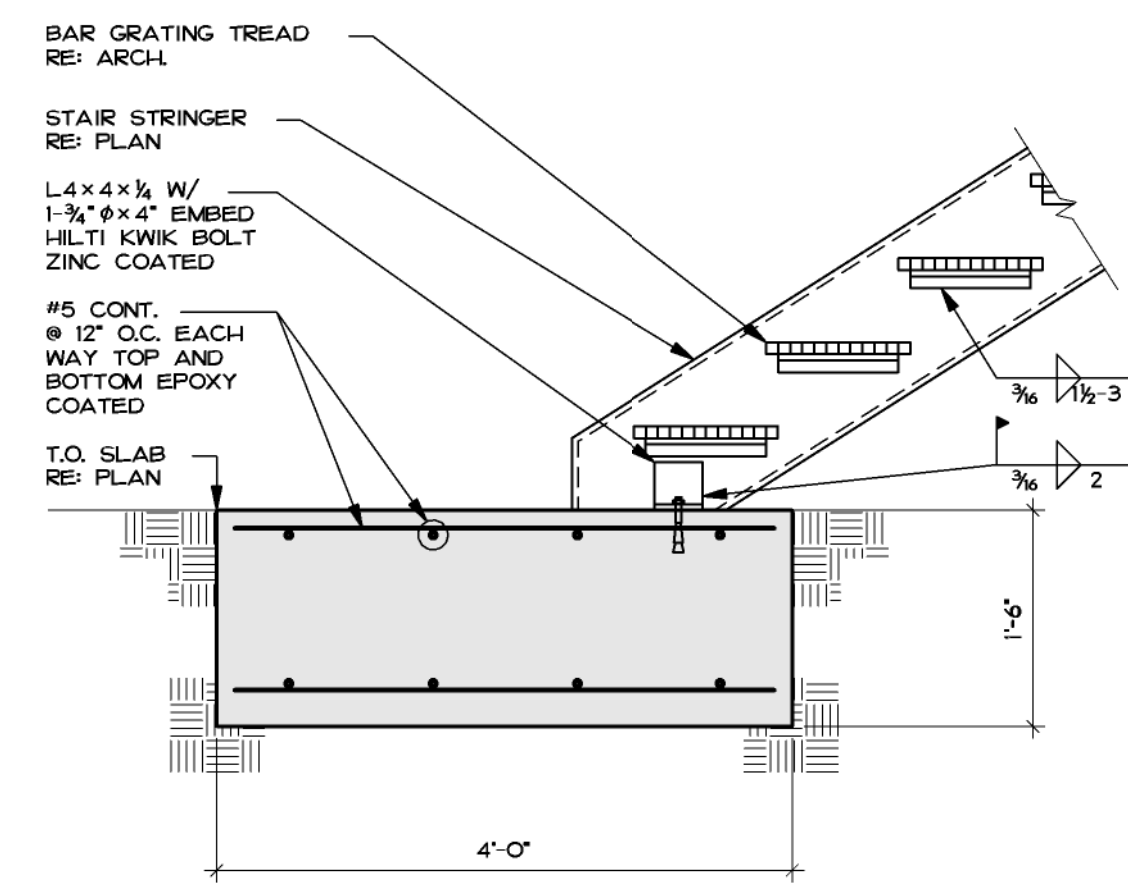
⑪ 3/4\" = 1'-0\"



⑫ 3/4\" = 1'-0\"



⑬ BAG HOUSE FOUNDATION PAD 3/4\" = 1'-0\"



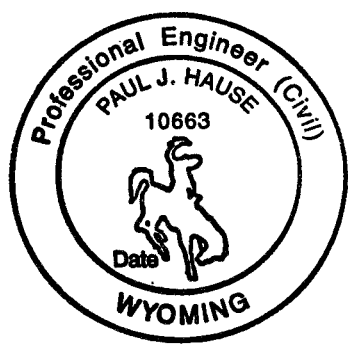
⑭ 3/4\" = 1'-0\"

CONSULTANTS:

MKK Consulting Engineers, Inc.
7600 East Orchard Road
Suite 250S
Greenwood Village, CO 80111
Phone: 303.796.6000
Fax: 303.796.6099

Calibre
9090 S Ridgeline Blvd.
Suite 105
Highlands Ranch, CO 80129
Phone: 303.399.5154
Fax: 303.730.1130

Structural Consultants Inc.
3400 E Bayaud Ave # 300
Denver, CO 80209-2929
Phone: 303.393.9501
Fax: 303.333.9501



ARCHITECT/ENGINEERS:

GREENFIELD ARCHITECTS
3650 S YOSEMITE ST. STE 402
DENVER, CO 80237
PHONE: 303-770-1020
FAX: 303-770-0922

GA Project Number 10-435

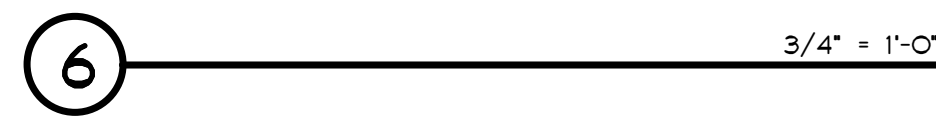
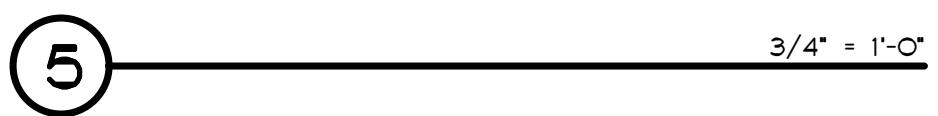
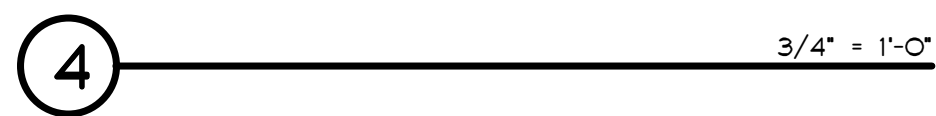
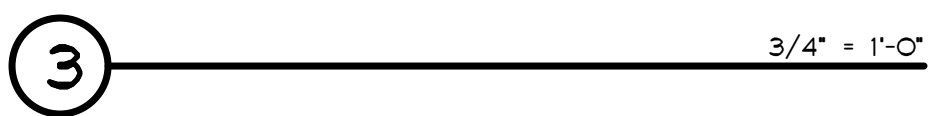
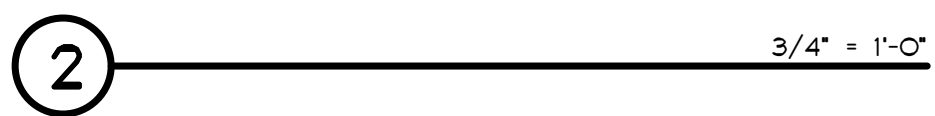
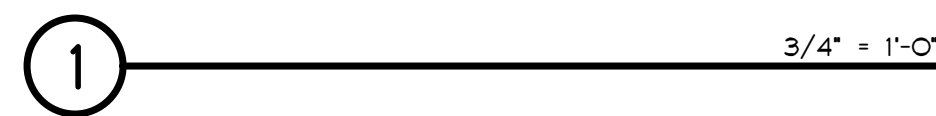
CONSTRUCTION DOCUMENTATION SUBMISSION - BIDDING AND CONSTRUCTION

FOUNDATION DETAILS

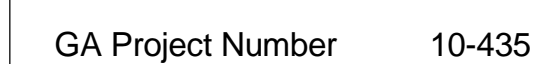
| | | | |
|---|----------------|--------------------------------|--------------------------|
| Project Title -BOILER PLANT -REPLACEMENT - | | Project Number - 666-11-101 | |
| Location - SHERIDAN, WY | | Building Number - 90 | |
| Date 12/15/2011 BIDDING & CNSTN | Checked BRW | Drawn APC | Drawing Number SF-500 |
| Approved: Project Director JASON BROWN | | Dwg. of -- | |

Office of
Construction
and Facilities
Management



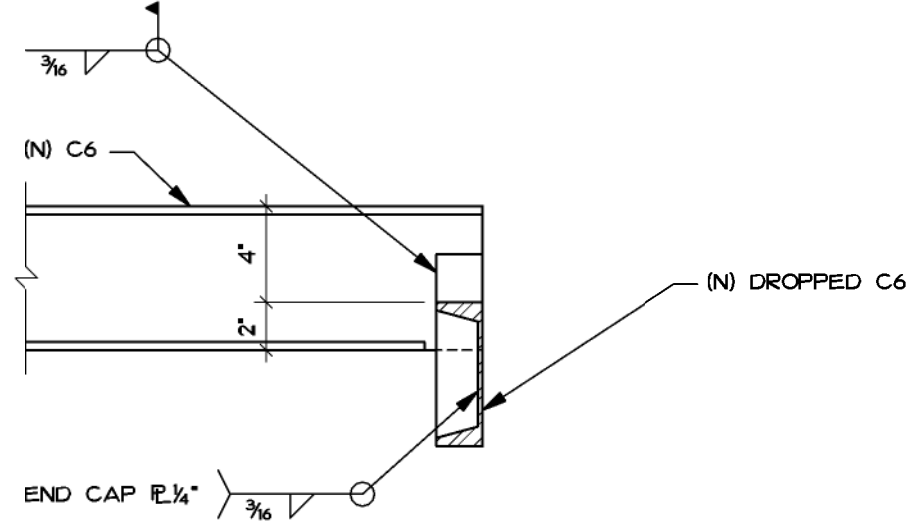


Structural Consultants Inc.
3400 E Bayaud Ave # 300
Denver, CO 80209-2929
Phone: 303.399.5154
Fax: 303.333.9501

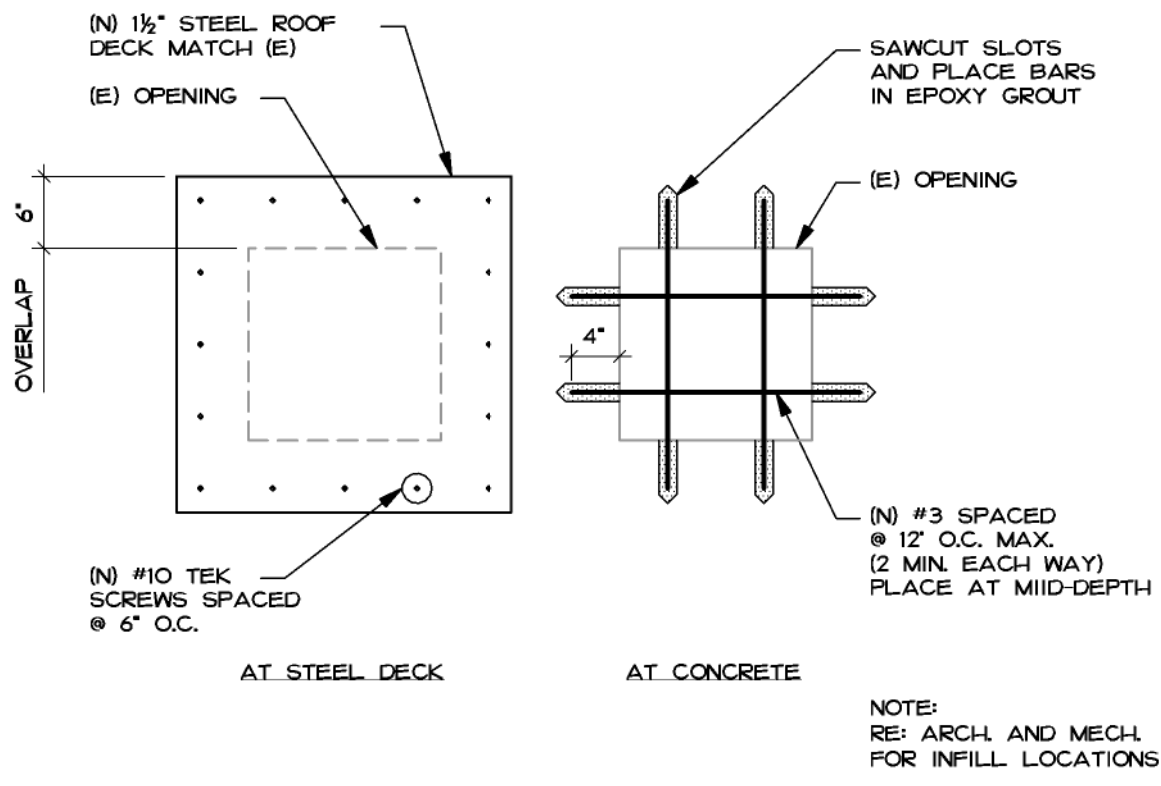
 Department of
Veterans Affairs

three inches = one foot
one and one half inches = one foot
one inch = one foot
three quarters inch = one foot
one half inch = one foot
three eighths inch = one foot
one quarter inch = one foot
one eighth inch = one foot
one sixteenth inch = one foot

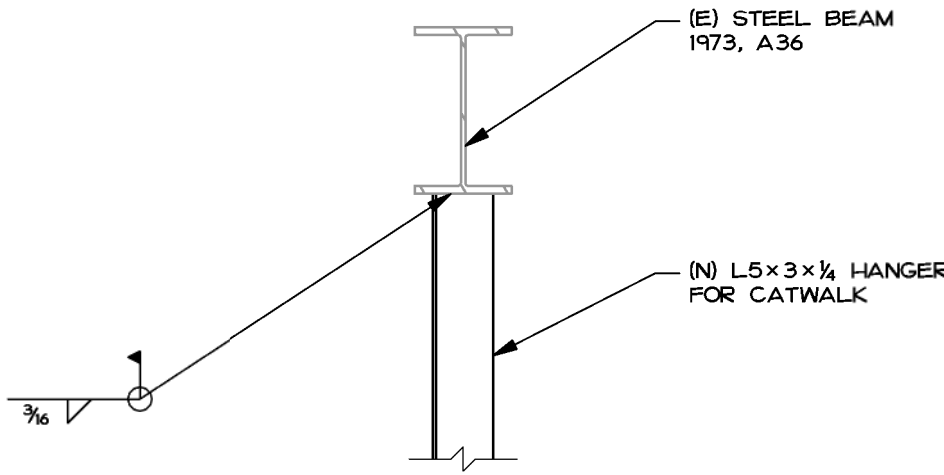
BOXED NOTES
INDICATE
TYPICAL NOTES



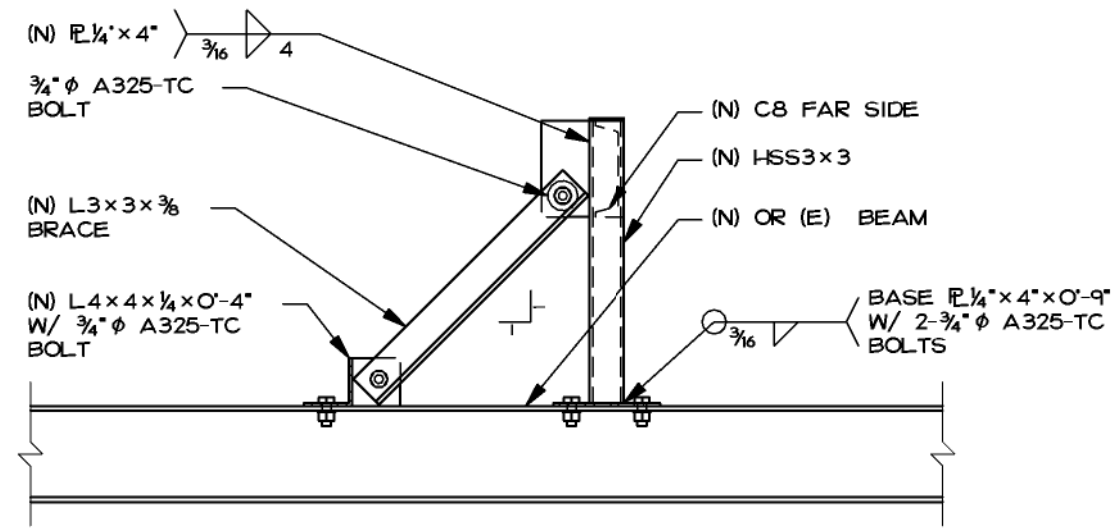
1 1 1/2" = 1'-0"



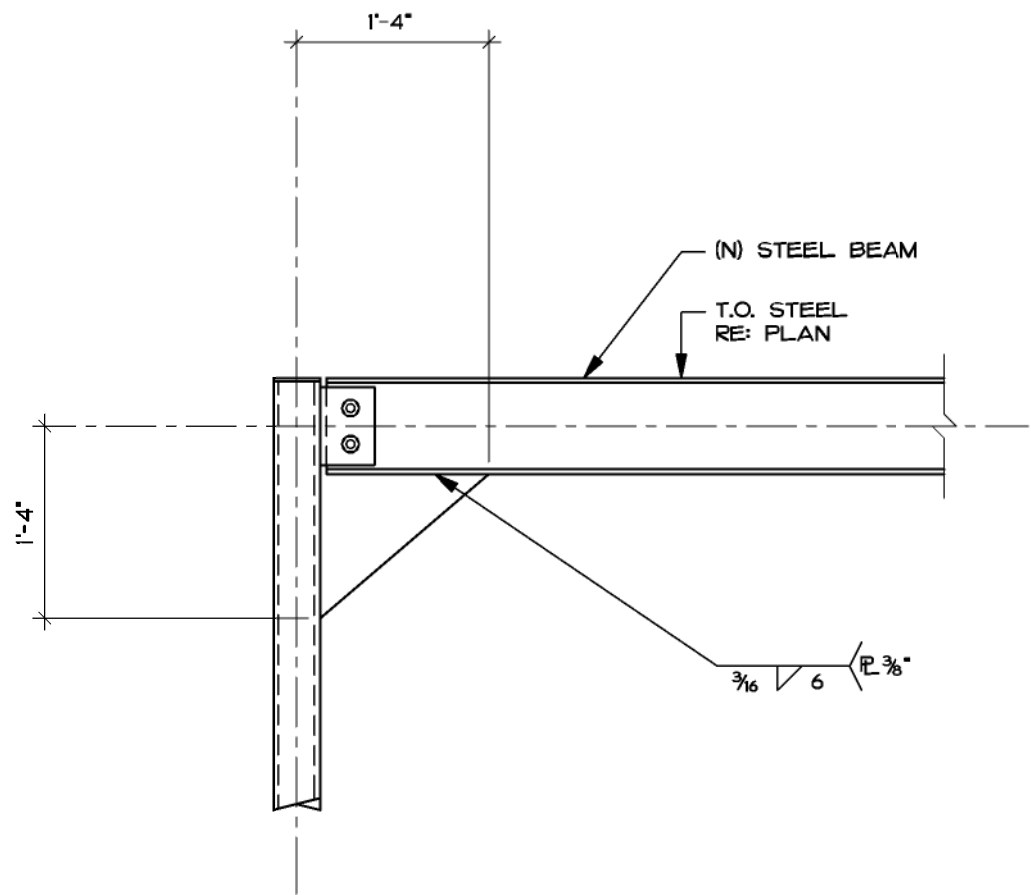
2 PLAN INFILL OF ROOF OPENING 3/4" = 1'-0"



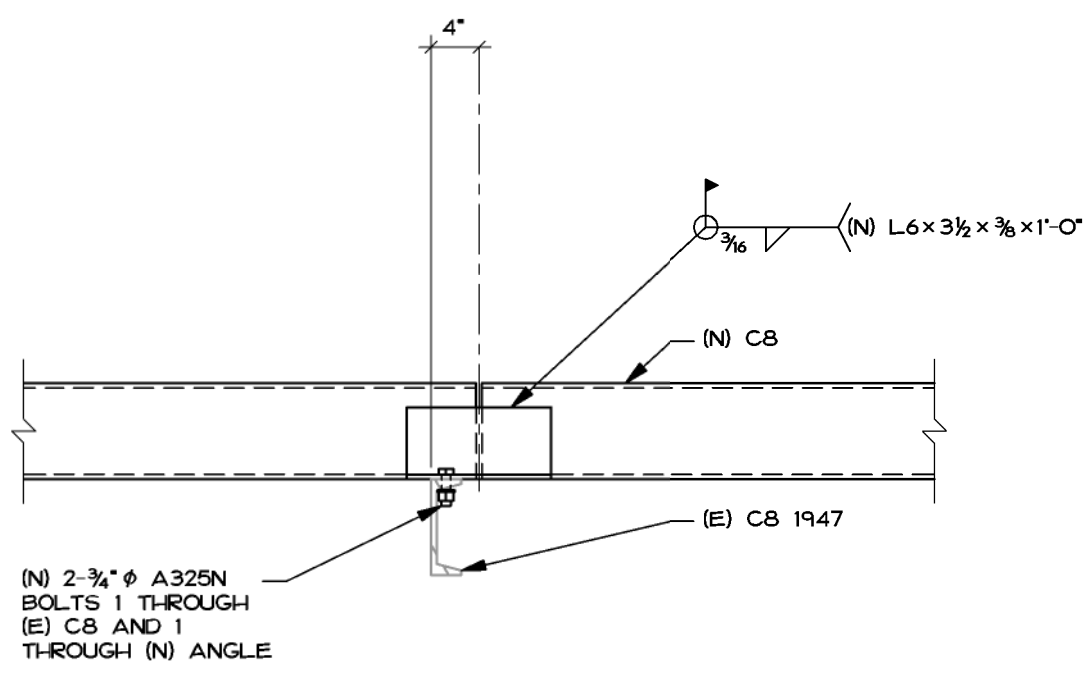
3 3/4" = 1'-0"



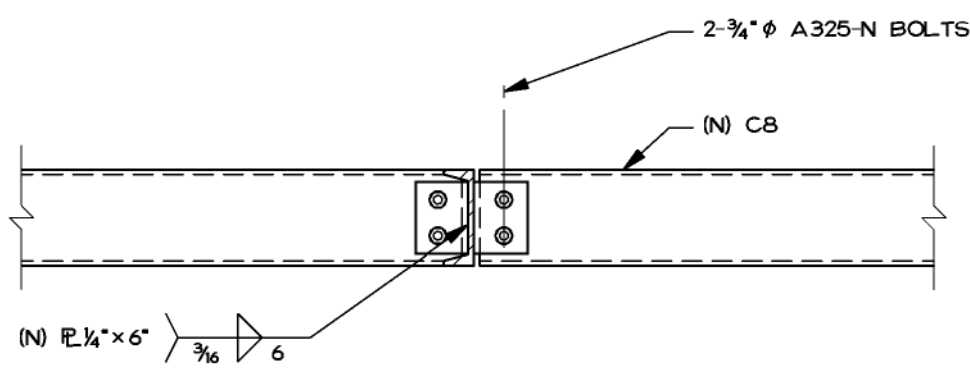
4 3/4" = 1'-0"



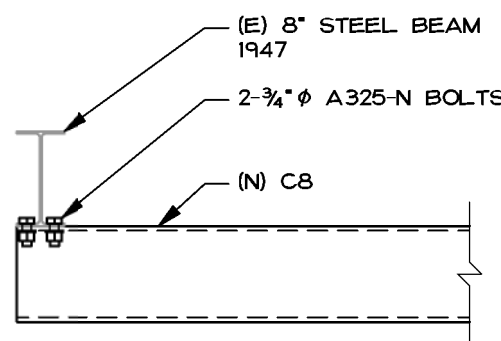
5 3/4" = 1'-0"



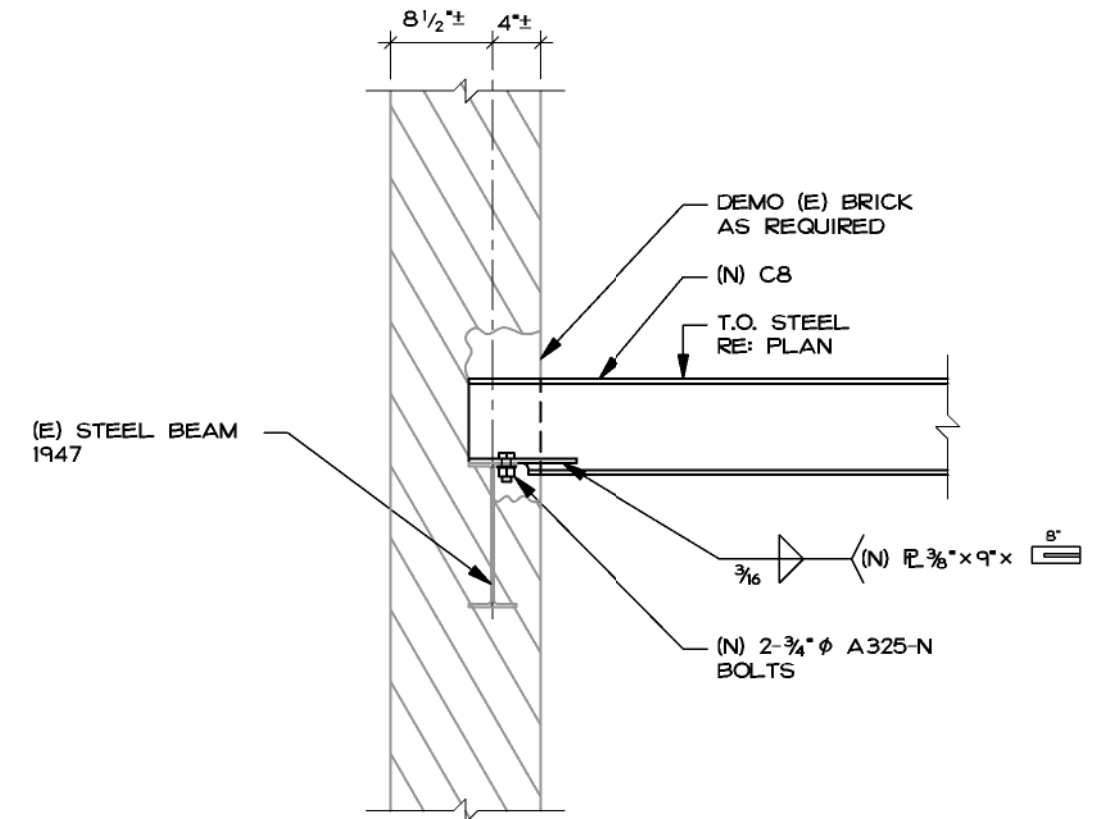
6 3/4" = 1'-0"



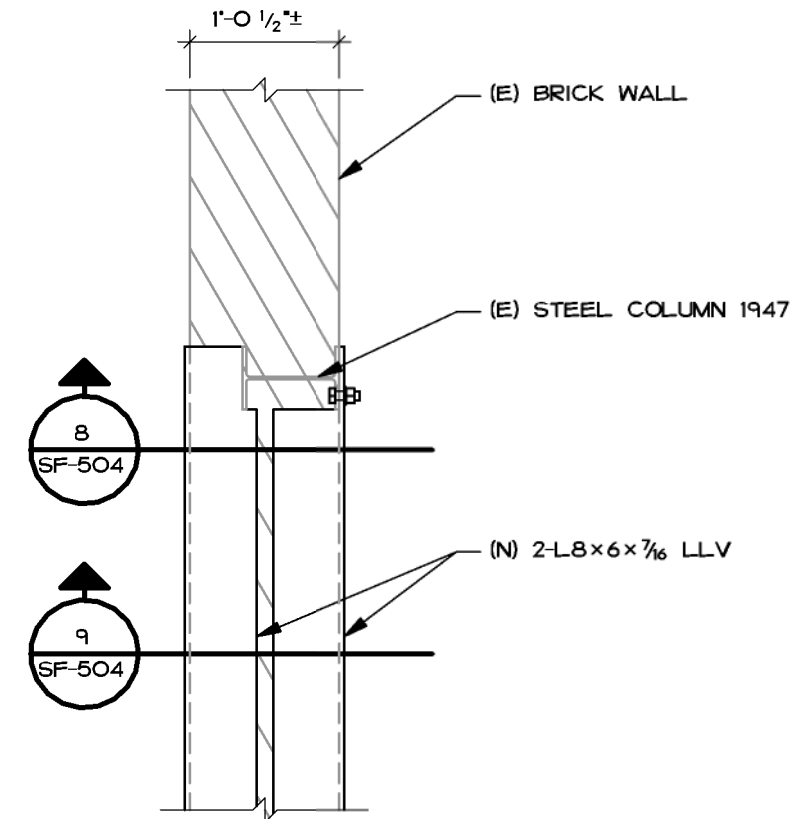
7 3/4" = 1'-0"



8 3/4" = 1'-0"



9 3/4" = 1'-0"



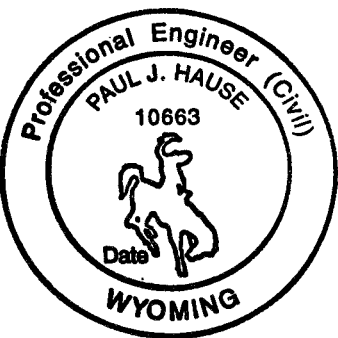
10 PLAN DETAIL 3/4" = 1'-0"

CONSULTANTS:

MKK Consulting Engineers, Inc.
7600 East Orchard Road
Suite 250S
Greenwood Village, CO 80111
Phone: 303.796.6000
Fax: 303.796.6099

Calibre
9090 S Ridgeline Blvd.
Suite 105
Highlands Ranch, CO 80129
Phone: 303.730.0434
Fax: 303.730.1130

Structural Consultants Inc.
3400 E Bayaud Ave # 300
Denver, CO 80209-2929
Phone: 303.399.5154
Fax: 303.333.9501



ARCHITECT/ENGINEERS:

GREENFIELD ARCHITECTS
3650 S YOSEMITE ST. STE 402
DENVER, CO 80237
PHONE: 303-770-1020
FAX: 303-770-0922

GA Project Number 10-435

Drawing Title
FRAMING DETAILS

Approved: Project Director
JASON BROWN

Project Title
-BOILER PLANT
-REPLACEMENT
-

Location
- SHERIDAN, WY

Date
12/15/2011
BIDDING & CNSTN

Checked
BRW

Drawn
APC

Project Number
- 666-11-101
Building Number
- 90

Drawing Number
SF-505

Dwg. of --

Office of
Construction
and Facilities
Management

