

**GENERAL NOTES:**

1. DEMO ALL EXISTING STEAM, CONDENSATE, AND WATER PIPING AND EQUIPMENT SERVING THE BOILER PLANT WITH THE EXCEPTION OF THE HEAT EXCHANGER SERVING THE MAKE-UP AIR UNIT HEATING SYSTEM AND PIPING TO THE MAKE-UP UNIT. PIPING NOT SHOWN CROSS-HATCHED FOR CLARITY. ALSO DO NOT REMOVE MPS PRV UNIT UNTIL AFTER NEW ONE IS INSTALLED AS THIS IS USED FOR THE TEMPORARY BOILERS.
2. THESE DRAWINGS ARE DERIVED FROM EXISTING DRAWINGS. CROSS-HATCHED ITEMS INDICATE WHAT IS TO BE REMOVED. ALL PIPING TO BE REMOVED.
3. RE: ARCHITECTURAL DRAWINGS FOR FLOOR, WALL AND ROOF PATCHING REQUIREMENTS.
4. SEE DESCRIPTION ON MH102 OF TEMPORARY SERVICES DURING CONSTRUCTION FOR PHASING OF STEAM SYSTEM DEMOLITION.

**FLAG NOTES:**

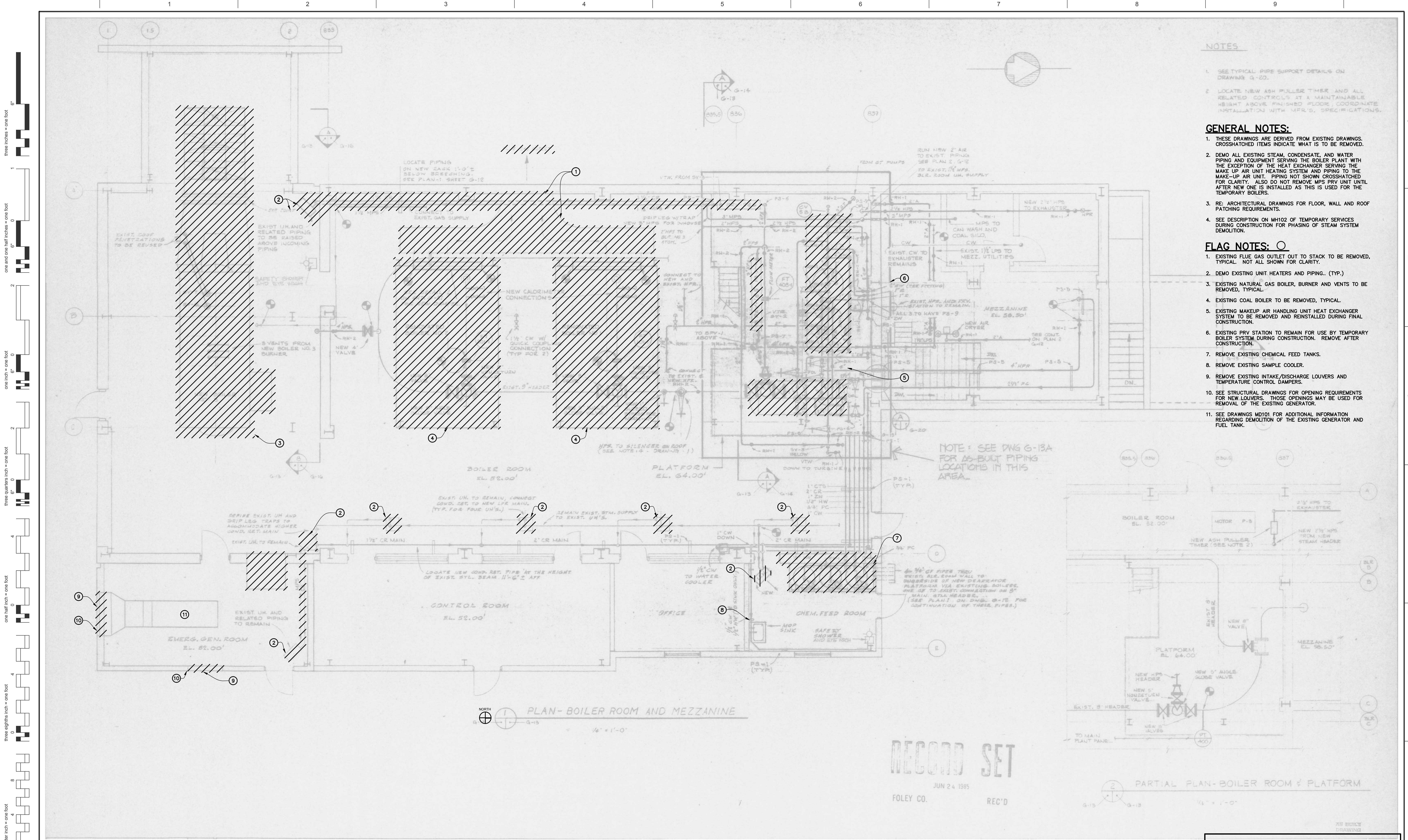
1. STOP DEMO OF EXISTING STEAM AND CONDENSATE PIPING PRIOR TO PENETRATION THROUGH EXTERIOR WALL (TYP.) SEE NEW PLANS FOR CONNECTION POINTS.
2. EXISTING NATURAL GAS BOILER, FAN AND ALL ASSOCIATED CONTROLS AND PIPING TO BE REMOVED.
3. EXISTING PUMPS TO BE REMOVED.
4. EXISTING COAL FIRED BOILER TO BE REMOVED, TYPICAL.
5. REMOVE EXISTING CONDENSATE TRANSFER PUMPS.
6. REMOVE EXISTING BOILER FEED PUMPS.
7. REMOVE EXISTING BLOWDOWN SYSTEM.
8. REMOVE EXISTING WATER SOFTENING SYSTEM.
9. REMOVE HOT WELL CONDENSATE PUMP SYSTEM.
10. REMOVE VACUUM CONDENSATE PUMPING UNIT. SEE DESCRIPTION OF TEMPORARY SERVICES DURING CONSTRUCTION AS THIS PUMP IS USED FOR TEMPORARY BOILERS UNTIL NEW CONDENSATE TRANSFER PUMPS ARE INSTALLED.
11. REMOVE EXISTING BOILER CONTROL PANEL.
12. EXISTING AIR DRYER, COMPRESSORS AND RECEIVERS TO REMAIN DURING CONSTRUCTION PERIOD FOR FUEL OIL ATOMIZATION FOR TEMPORARY BOILERS. REMOVE ALL EXISTING COMPRESSED AIR PIPING BACK TO THE HEADER. NEW COMPRESSED AIR LINE SHALL BE ROUTED OUT OF THE BUILDING TO THE TEMPORARY BOILERS. RE: SHEET MH102 FOR PIPING ROUTING. COMPRESSED AIR PIPING AND ASSOCIATED EQUIPMENT TO BE REMOVED ONCE TEMPORARY BOILERS ARE BROUGHT OFFLINE.
13. SEE DRAWING MD101 FOR ADDITIONAL INFORMATION REGARDING DEMOLITION OF THE EXISTING GENERATOR AND FUEL TANK.

THESE DRAWINGS ARE AS-BUILT DRAWINGS AND ARE PROVIDED TO INDICATE THE EXTENT OF DEMOLITION AND FOR REFERENCE ONLY.

CONSTRUCTION DOCUMENTATION - BIDDING AND CONSTRUCTION

<b>CONSULTANTS:</b>		<b>ARCHITECT/ENGINEERS:</b>		<b>Drawing Title</b> LOWER LEVEL PIPING DEMOLITION PLAN		<b>Project Title</b> BOILER PLANT REPLACEMENT		<b>Project Number</b> 666-11-101		<b>Office of Construction and Facilities Management</b> 			
MKK Consulting Engineers, Inc. 7600 East Orchard Road Suite 250S Greenwood Village, CO 80111 Phone: 303.796.6000 Fax: 303.796.6099		Calibre 9090 S Ridgeline Blvd. Suite 105 Highlands Ranch, CO 80129 Phone: 303.730.0434 Fax: 303.730.1130		Structural Consultants Inc. 3400 E Bayaud Ave # 300 Denver, CO 80209-2929 Phone: 303.399.5154 Fax: 303.333.9501		Building Number 90		Drawing Number MD102					
Revisions:		Date:		Approved: Project Director JASON BROWN		Location SHERIDAN, WY		Date 12/15/2011 BIDDING & CNSTN				Checked PRM	
VA FORM 08-6231				GA Project Number 666-10-811									





- NOTES**
- SEE TYPICAL PIPE SUPPORT DETAILS ON DRAWING G-20.
  - LOCATE NEW ASH PULLER TIMER AND ALL RELATED CONTROLS AT A MAINTAINABLE HEIGHT ABOVE FINISHED FLOOR. COORDINATE INSTALLATION WITH MFR'S SPECIFICATIONS.

- GENERAL NOTES:**
- THESE DRAWINGS ARE DERIVED FROM EXISTING DRAWINGS. CROSSHATCHED ITEMS INDICATE WHAT IS TO BE REMOVED.
  - DEMO ALL EXISTING STEAM, CONDENSATE, AND WATER PIPING AND EQUIPMENT SERVING THE BOILER PLANT WITH THE EXCEPTION OF THE HEAT EXCHANGER SERVING THE MAKE-UP AIR UNIT HEATING SYSTEM AND PIPING TO THE MAKE-UP AIR UNIT. PIPING NOT SHOWN CROSSHATCHED FOR CLARITY. ALSO DO NOT REMOVE MPS PRV UNIT UNTIL AFTER NEW ONE IS INSTALLED AS THIS IS USED FOR THE TEMPORARY BOILERS.
  - RE: ARCHITECTURAL DRAWINGS FOR FLOOR, WALL AND ROOF PATCHING REQUIREMENTS.
  - SEE DESCRIPTION ON MH102 OF TEMPORARY SERVICES DURING CONSTRUCTION FOR PHASING OF STEAM SYSTEM DEMOLITION.

- FLAG NOTES:**
- EXISTING FLUE GAS OUTLET OUT TO STACK TO BE REMOVED, TYPICAL. NOT ALL SHOWN FOR CLARITY.
  - DEMO EXISTING UNIT HEATERS AND PIPING.. (TYP.)
  - EXISTING NATURAL GAS BOILER, BURNER AND VENTS TO BE REMOVED, TYPICAL.
  - EXISTING COAL BOILER TO BE REMOVED, TYPICAL.
  - EXISTING MAKEUP AIR HANDLING UNIT HEAT EXCHANGER SYSTEM TO BE REMOVED AND REINSTALLED DURING FINAL CONSTRUCTION.
  - EXISTING PRV STATION TO REMAIN FOR USE BY TEMPORARY BOILER SYSTEM DURING CONSTRUCTION. REMOVE AFTER CONSTRUCTION.
  - REMOVE EXISTING CHEMICAL FEED TANKS.
  - REMOVE EXISTING SAMPLE COOLER.
  - REMOVE EXISTING INTAKE/DISCHARGE LOUVERS AND TEMPERATURE CONTROL DAMPERS.
  - SEE STRUCTURAL DRAWINGS FOR OPENING REQUIREMENTS FOR NEW LOUVERS. THOSE OPENINGS MAY BE USED FOR REMOVAL OF THE EXISTING GENERATOR.
  - SEE DRAWINGS MD101 FOR ADDITIONAL INFORMATION REGARDING DEMOLITION OF THE EXISTING GENERATOR AND FUEL TANK.

**RECORD SET**  
JUN 24 1985  
FOLEY CO. REC'D

THESE DRAWINGS ARE AS-BUILT DRAWINGS AND ARE PROVIDED TO INDICATE THE EXTENT OF DEMOLITION AND FOR REFERENCE ONLY.

CONSTRUCTION DOCUMENTATION - BIDDING AND CONSTRUCTION

		<b>CONSULTANTS:</b>			<b>ARCHITECT/ENGINEERS:</b>		Drawing Title <b>BOILER ROOM AND MEZZANINE DEMOLITION PLAN</b>		Project Title <b>BOILER PLANT REPLACEMENT</b> -		Project Number <b>666-11-101</b>		Office of Construction and Facilities Management 		
		MKK Consulting Engineers, Inc. 7600 East Orchard Road Suite 250S Greenwood Village, CO 80111 Phone: 303.796.6000 Fax: 303.796.6099			Structural Consultants Inc. 3400 E Bayaud Ave # 300 Denver, CO 80209-2929 Phone: 303.399.5154 Fax: 303.333.9501		GREENFIELD ARCHITECTS 3650 S YOSEMITE ST., STE 402 DENVER, CO 80237 PHONE: 303-770-1020 FAX: 303-770-0922		Approved: Project Director JASON BROWN		Location <b>SHERIDAN, WY</b>			Building Number <b>90</b>	
		Calibre 9090 S Ridgeline Blvd. Suite 105 Highlands Ranch, CO 80129 Phone: 303.730.0434 Fax: 303.730.1130					GA Project Number 666-10-811		Date 12/15/2011 BIDDING & CNSTN		Checked PRM			Drawn DRS	
Revisions:		Date												Drawing Number <b>MD103</b> --	