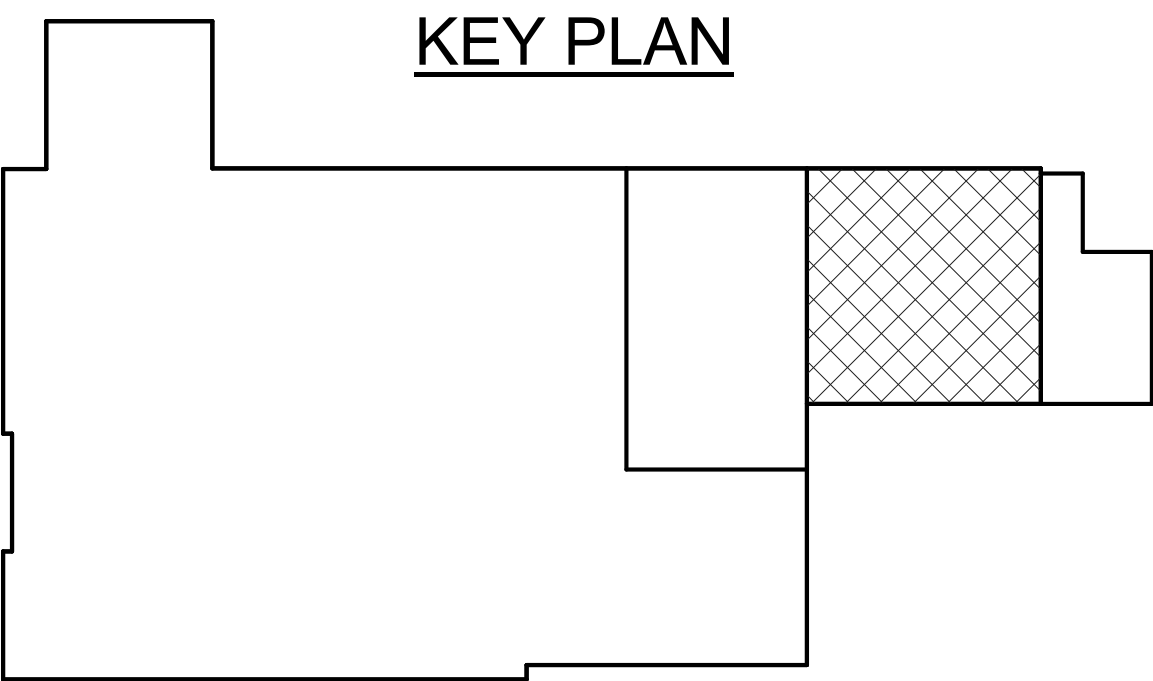
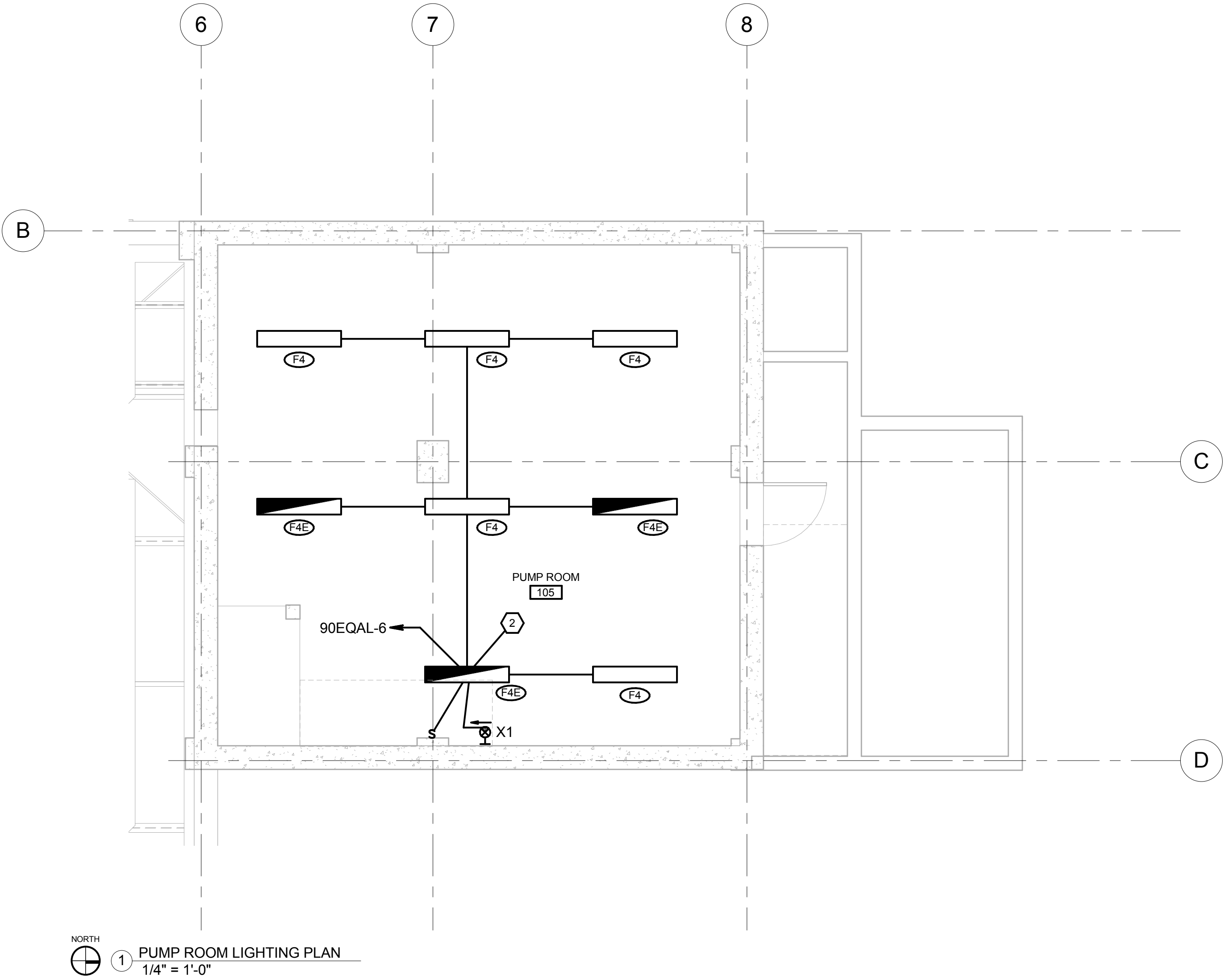
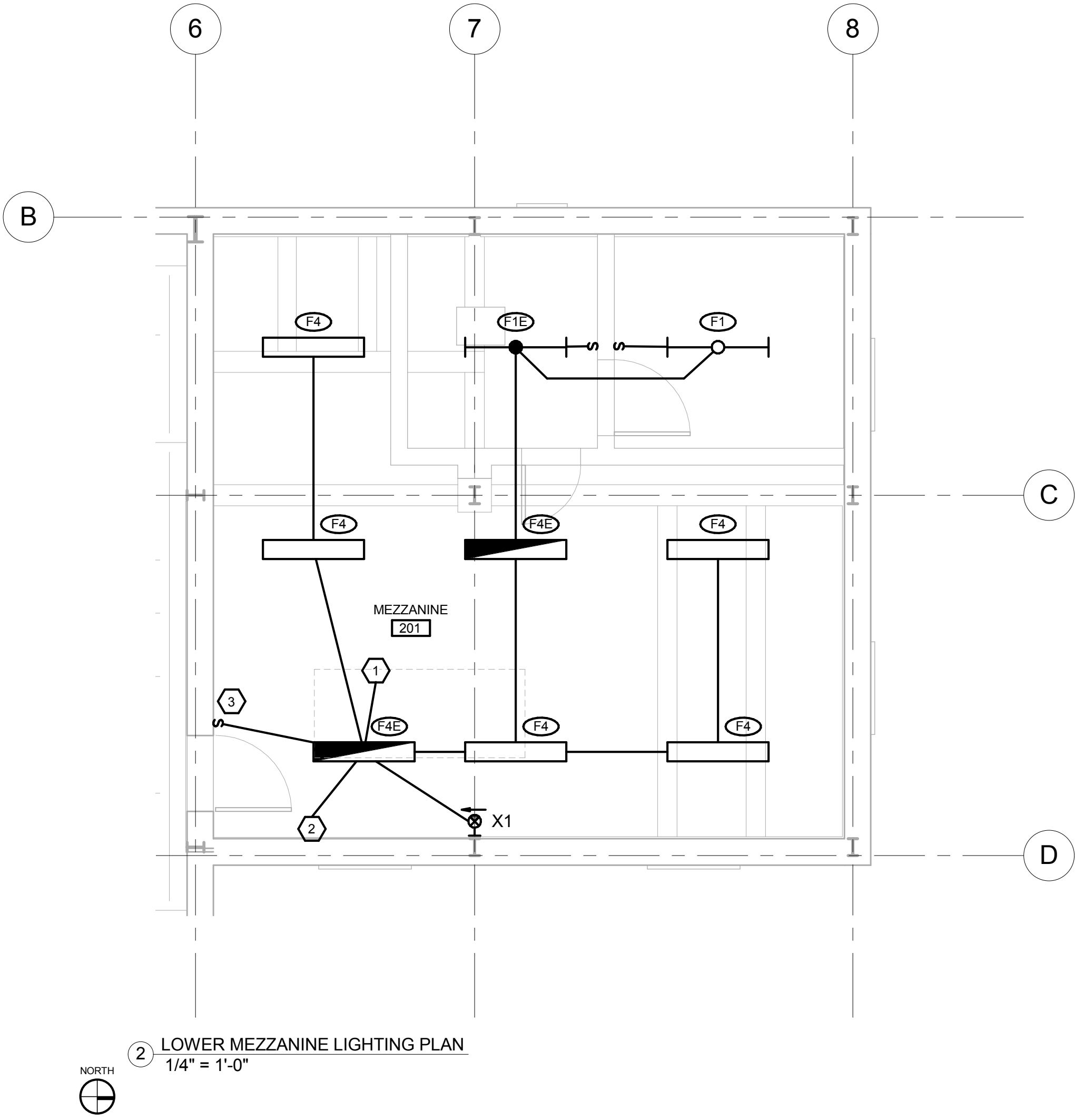


GENERAL NOTES

- A. LIGHTING FIXTURE LOCATIONS SHALL BE COORDINATED WITH DUCTWORK, PIPING AND CONDUIT RUN BEFORE INSTALLATION.
- B. IF LIGHTING DEDUCT ALTERNATE #3 IS ACCEPTED, ALL EXISTING LIGHTING AND ASSOCIATED CONDUIT, WIRE, SWITCHES AND FIXTURES SHALL REMAIN AS-IS IN THE SPACE. RECONNECT EXISTING LIGHTING CIRCUITS TO NEW 20A1P SPARE CIRCUIT BREAKER IN NEW PANEL '90EQAR. EXTEND HOMERUN CONDUCTORS AS NEEDED.

FLAG NOTES

1. CONNECT TO LIGHTING FIXTURES BELOW VIA 90EQAL-6.
2. CONNECT TO LIGHTING FIXTURES ABOVE VIA 90EQAL-6.
3. SWITCH SHALL BE LOCATED 48" ABOVE STAIRWELL LANDING BETWEEN PUMP ROOM AND THE LOWER MEZZANINE.



KEY PLAN

CONSTRUCTION DOCUMENTATION SUBMISSION - BIDDING & CONSTRUCTION

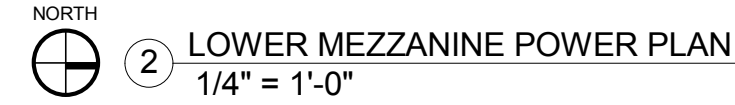
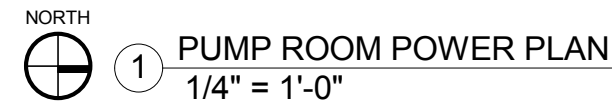
		CONSULTANTS:			ARCHITECT/ENGINEERS:		Drawing Title PUMP & MEZZANINE LIGHTING PLAN		Project Title -BOILER PLANT -REPLACEMENT -		Project Number - 666-11-101		<div>Office of Construction and Facilities Management</div> <div> Department of Veterans Affairs</div>						
		MKK Consulting Engineers, Inc. 7600 East Orchard Road Suite 250S Greenwood Village, CO 80111 Phone: 303.796.6000 Fax: 303.796.6099			GREENFIELD ARCHITECTS 3650 S YOSEMITE ST, STE 402 DENVER, CO 80237 PHONE: 303-770-1020 FAX: 303-770-0922			Approved: Project Director JASON BROWN		Location - SHERIDAN, WY		Building Number - 90							
		Calibre 9090 S Ridgeline Blvd. Suite 105 Highlands Ranch, CO 80129 Phone: 303.730.0434 Fax: 303.730.1130			Structural Consultants Inc. 3400 E Bayaud Ave # 300 Denver, CO 80209-2929 Phone: 303.399.5154 Fax: 303.333.9501					Date 12/15/2011 BIDDING & CNSTN		Checked KMS		Drawn BNC		Drawing Number EL102			
					GA Project Number 666-10-811											Dwg. of --			
Revisions:		Date																	



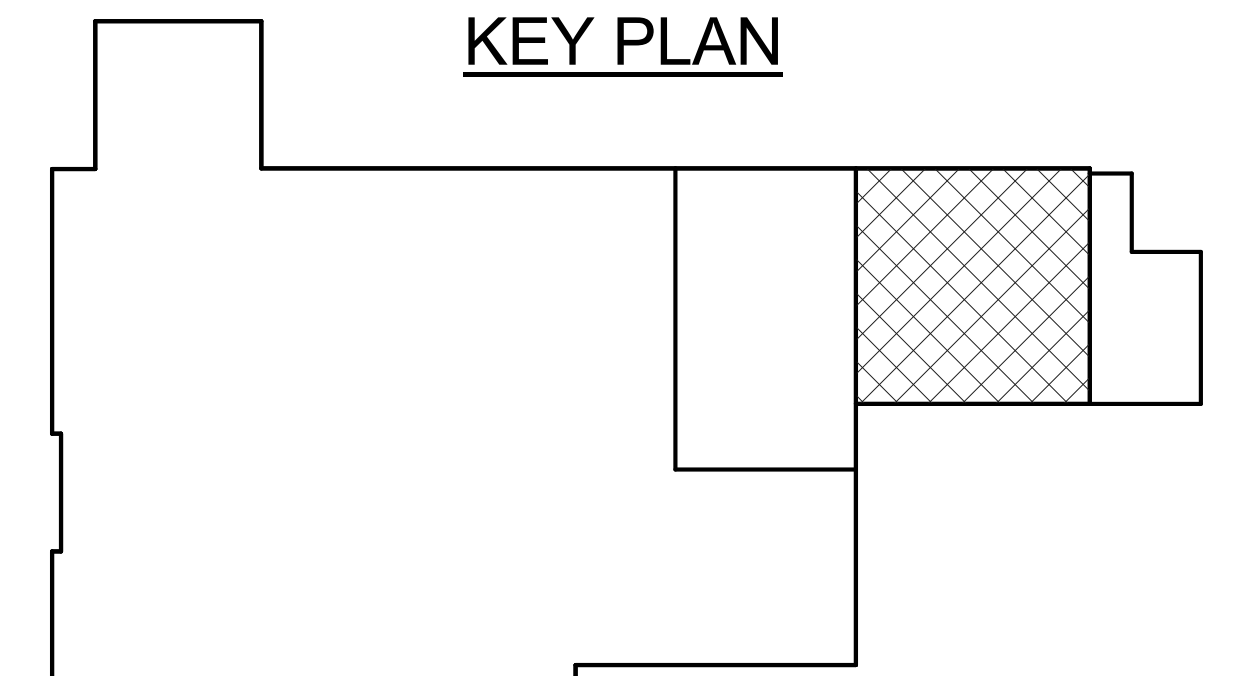
1. MCC SHALL BE GROUNDED AT 2 POINTS WITH #4/0 AWG CU WIRE, GREEN TW INSULATION IN 1" PVC CONDUIT.
2. GENERATOR LOUVER MOTORIZED DAMPER. PROVIDE CONNECTION TO GENERATOR CONTROL PANEL AS SPECIFIED IN SPECIFICATION SECTION 263213 ENGINE GENERATOR.
3. PROVIDE (5) #14 AWG CONDUCTORS IN 1/2" C. FROM THE GENERATOR CONTROL PANEL TO THE 800A ATS LOCATED IN THE ELECTRICAL ROOM AND PROVIDE (2) #14 AWG CONDUCTORS IN 1/2" C. FROM THE GENERATOR CONTROL PANEL TO THE GENERATOR REMOTE ANNUNCIATOR PANEL LOCATED IN THE ELECTRICAL ROOM.
4. PROVIDE (1) CAT 5 TWISTED STRANDED UNSHIELDED NETWORK DATA CABLE IN 1/2" C. FROM THE GENERATOR CONTROL PANEL TO THE 800A ATS LOCATED IN THE ELECTRICAL ROOM.
5. PROVIDE (1) CAT 5 TWISTED STRANDED UNSHIELDED NETWORK DATA CABLE IN 1/2" C. FROM THE GENERATOR CONTROL PANEL TO THE GENERATOR REMOTE ANNUNCIATOR PANEL.
6. PROVIDE 120V CONNECTION (2#12+12G) 1/2"C TO BAG HOUSE CONTROL MODULE PROVIDED BY MECHANICAL CONTRACTOR. COORDINATE WITH MECHANICAL CONTRACTOR FOR EXACT REQUIREMENTS.
7. EQUIPMENT PROVIDED WITH GENERATOR. PROVIDE 120V POWER CONNECTION. CONNECT PER MANUFACTURER / INSTALLER INSTRUCTIONS.
8. UNDERGRATE AIR FAN. PROVIDE 480V 3 PHASE POWER CONNECTION AND PROVIDE (3#12+12G) 1/2"C. FOR HOMERUN CIRCUIT. COORDINATE EXACT EQUIPMENT LOCATION WITH BOILER MANUFACTURER / INSTALLER.
9. FUEL INJECTOR FAN. PROVIDE 480V 3 PHASE POWER CONNECTION AND PROVIDE (3#12+12G)1/2"C. FOR HOMERUN CIRCUIT. COORDINATE EXACT EQUIPMENT LOCATION WITH BOILER MANUFACTURER / INSTALLER.
10. ASH CROSS AUGER. PROVIDE 480V 3 PHASE POWER CONNECTION AND PROVIDE (3#12+12G)1/2"C. FOR HOMERUN CIRCUIT. COORDINATE EXACT EQUIPMENT LOCATION WITH BOILER MANUFACTURER / INSTALLER.
11. HYDROLIC PUMP CHAIN GRATE DRIVE. PROVIDE 480V 3 PHASE POWER CONNECTION AND PROVIDE (3#12+12G)1/2"C. FOR HOMERUN CIRCUIT. COORDINATE EXACT EQUIPMENT LOCATION WITH BOILER MANUFACTURER / INSTALLER.
12. WINDOW ASH REMOVAL. PROVIDE 480V 3 PHASE POWER CONNECTION AND PROVIDE (3#12+12G)1/2"C. FOR HOMERUN CIRCUIT. COORDINATE EXACT EQUIPMENT LOCATION WITH BOILER MANUFACTURER / INSTALLER.
13. FUEL METERING AUGER. PROVIDE 480V 3 PHASE POWER CONNECTION AND PROVIDE (3#12+12G)1/2"C. FOR HOMERUN CIRCUIT. COORDINATE EXACT EQUIPMENT LOCATION WITH BOILER MANUFACTURER / INSTALLER.
14. TRANSFER U TROUGH. PROVIDE 480V 3 PHASE POWER CONNECTION AND PROVIDE (3#12+12G)1/2"C. FOR HOMERUN CIRCUIT. COORDINATE EXACT EQUIPMENT LOCATION WITH BOILER MANUFACTURER / INSTALLER.
15. DUST COLLECTOR ROTARY AIRLOCK. PROVIDE 480V 3 PHASE POWER CONNECTION AND PROVIDE (3#12+12G)1/2"C. FOR HOMERUN CIRCUIT. COORDINATE EXACT EQUIPMENT LOCATION WITH BOILER MANUFACTURER / INSTALLER.
16. SEE PUMP & MEZZANINE POWER PLAN SHEET EP102 FOR RECEPTICAL CONNECTION.

KEY PLAN

 Department of
Veterans Affairs



- ## KEY PLAN

[illegible]

GENERAL NOTES

- A. TELECOM, DATA AND OTHER RELATED LOW VOLTAGE COMMUNICATION SYSTEMS THAT ARE EXISTING SHALL REMAIN AS-IS. CONTRACTOR SHALL BE RESPONSIBLE FOR REPAIRS TO ANY EXISTING INFRASTRUCTURE THAT IS DAMAGED DURING THE COURSE OF CONSTRUCTION AND ANY MODIFICATIONS TO EXISTING INFRASTRUCTURE REQUIRED TO ACCOMMODATE CONSTRUCTION AS SHOWN ON THESE PLANS SHALL BE THE RESPONSIBILITY OF THE CONTRACTOR TO COMPLETE.

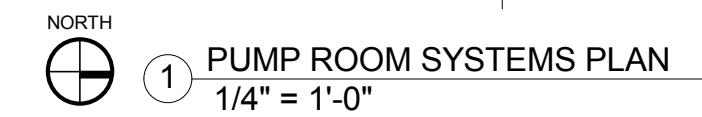
FLAG NOTES

1. PROVIDE 4" SQUARE JUNCTION BOX WITH BLANK COVER, CENTERED ABOVE EXTERIOR DOOR AT 8'-0" AFF FOR FUTURE SECURITY ACCESS EQUIPMENT.
2. PROVIDE 1/2" CONDUIT WITH PULLSTRING TO THE SECURITY GUTTER BOX LOCATED IN THE CONTROL ROOM.
3. HORN/STROBE LOCATED ON LOWER MEZZANINE, SEE PUMP & MEZZANINE SYSTEMS PLAN.

KEY PLAN

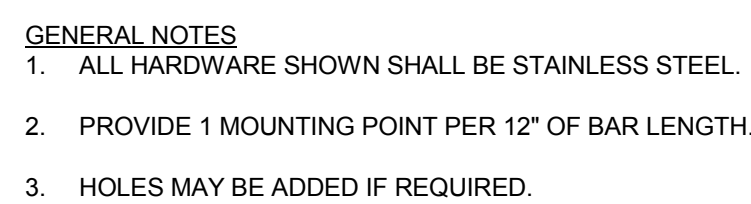
CONSTRUCTION DOCUMENTATION SUBMISSION - BIDDING & CONTRUCTION

<div>Revisions:</div> <div>Date</div>		<div>CONSULTANTS:</div> <div>MKK Consulting Engineers, Inc. 7600 East Orchard Road Suite 250S Greenwood Village, CO 80111 Phone: 303.796.6000 Fax: 303.796.6099</div> <div>Calibre 9090 S Ridgeline Blvd. Suite 105 Highlands Ranch, CO 80129 Phone: 303.730.0434 Fax: 303.730.1130</div> <div>Structural Consultants Inc. 3400 E Bayaud Ave # 300 Denver, CO 80209-2929 Phone: 303.399.5154 Fax: 303.333.9501</div>		<div></div>	<div>ARCHITECT/ENGINEERS:</div> <div>GREENFIELD ARCHITECTS 3650 S YOSEMITE ST, STE 402 DENVER, CO 80237 PHONE: 303-770-1020 FAX: 303-770-0922</div> <div>GA Project Number 666-10-811</div>		<div>Drawing Title</div> <div>BOILER ROOM SYSTEMS PLAN</div> <div>Approved: Project Director JASON BROWN</div>		<div>Project Title</div> <div>-BOILER PLANT -REPLACEMENT -</div> <div>Location</div> <div>- SHERIDAN, WY</div> <div>Date</div> <div>12/15/2011 BIDDING & CNSTN</div> <div>Checked</div> <div>KMS</div> <div>Drawn</div> <div>BNC</div>		<div>Project Number</div> <div>- 666-11-101</div> <div>Building Number</div> <div>- 90</div> <div>Drawing Number</div> <div>EY101</div> <div>Dwg. of --</div>	<div>Office of Construction and Facilities Management</div> <div> Department of Veterans Affairs</div>
---------------------------------------	--	--	--	-------------	---	--	--	--	--	--	---	--

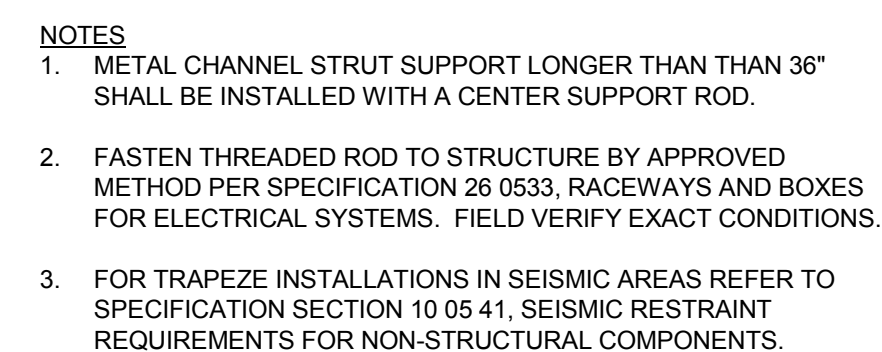


A. TELECOM DATA AND OTHER RELATED LOW VOLTAGE COMMUNICATION SYSTEMS THAT ARE EXISTING ARE TO REMAIN AS-IS. CONTRACTOR SHALL BE RESPONSIBLE FOR REPAIRS TO ANY EXISTING INFRASTRUCTURE THAT IS DAMAGED DURING THE COURSE OF CONSTRUCTION AND ANY MODIFICATIONS TO EXISTING INFRASTRUCTURE REQUIRED TO ACCOMMODATE CONSTRUCTION SHALL BE THE RESPONSIBILITY OF THE CONTRACTOR TO COMPLETE.

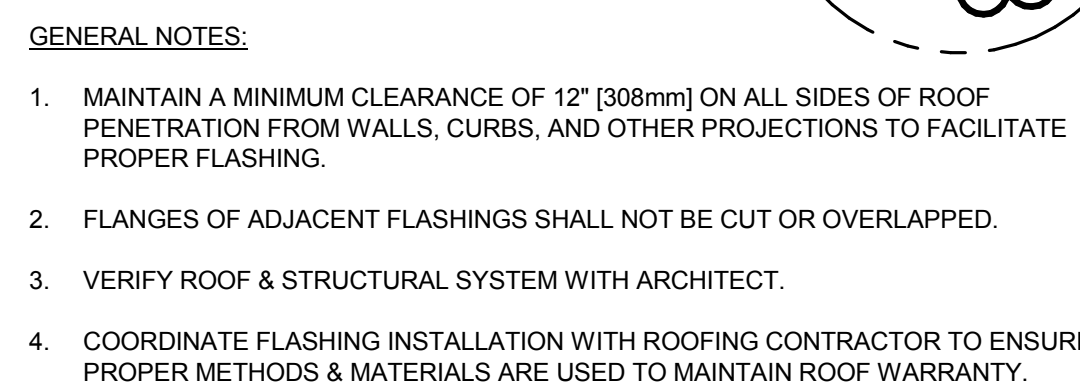
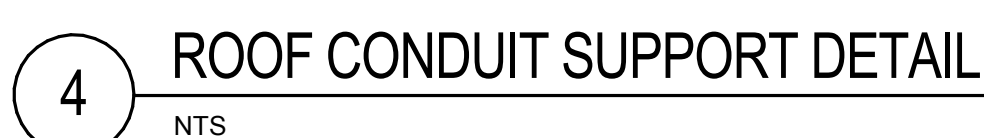
[illegible]



1 GROUNDING BAR DETAIL
NTS



3 CONDUIT TRAPEZE MOUNTING DETAIL



5 ROOF PENETRATION DETAIL

CONSULTANTS:

MKK Consulting Engineers, Inc. Calibre
7600 East Orchard Road 9090 S Ridgeline Blvd.
Suite 250S Suite 105
Greenwood Village, CO 80111 Highlands Ranch, CO 80129
Phone: 303.796.6000 Phone: 303.730.0434
Fax: 303.796.6099 Fax: 303.730.1130

Calibre
9090 S Ridgeline Blvd.
Suite 105
Highlands Ranch, CO 80129
Phone: 303.730.0434
Fax: 303.730.1130

Structural Consultants Inc.
3400 E Bayaud Ave # 300
Denver, CO 80209-2929
Phone: 303.399.5154
Fax: 303.333.9501



GREENFIELD ARCHITECTS
3650 S YOSEMITE ST, STE 402
DENVER, CO 80237
PHONE: 303-770-1020
FAX: 303-770-0922

GA Project Number 666-10-811

	Drawing Title
--	---------------

DETAILS

Approved: Project Director
JASON BROWN

Project Title
-BOILER PLANT
-REPLACEMENT

Location	- SHERIDAN, WY
----------	----------------

Date
12/15/2011
BIDDING & CNSTN

Project Number

Building Number

Building Number
- 90

	Drawing Number
--	----------------

EI10

Office of
Construction
and Facilities
Management



CONSTRUCTION DOCUMENTATION SUBMISSION - BIDDING & CONSTRUCTION

LUMINAIRE SCHEDULE						
TYPE	LAMPS		DESCRIPTION	VOLT	MOUNTING	MANUFACTURER, CAT. NUMBER
	QTY	CAT. NO				
F1	2	F32T8/SP841	LINEAR STRIP WITH SYMETRIC REFLECTOR AND WIREGUARD	277	SURFACE CEILING	LITHONIA EJS-2-32-MVOLT-GE810IS-WGL
F1E	2	F32T8/SP841	LINEAR STRIP WITH SYMETRIC REFLECTOR, WIREGUARD, AND EMERGENCY BATTERY PACK	277	SURFACE CEILING	LITHONIA EJS-2-32-MVOLT-GE810IS-WGL
F2	6	F54T5HO/SP841	FLUORESCENT WET LOCATION HIGH BAY FIXTURE	277	SURFACE	LITHONIA FWB164-4-54T5HO-N1X20-PCL125WG-MVOLT-2/3-GE810PS90
F2	6	F54T5HO/SP841	FLUORESCENT WET LOCATION HIGH BAY FIXTURE WITH EMERGENCY BATTERY PACK	277	SURFACE	LITHONIA FWB164-5-54T5HO-N1X20-PCL125WG-MVOLT-2/3-GE810PS90-EL14DW
F3	4	F54T5HO/SP841	FLUORESCENT WET LOCATION HIGH BAY	277	SURFACE	LITHONIA FWB164-4-54T5HO-N1X20-PCL125WG-MVOLT-GE810PS90
F3E	4	F54T5HO/SP841	FLUORESCENT WET LOCATION HIGH BAY WITH EMERGENCY BATTERY PACK	277	SURFACE	LITHONIA FWB164-4-54T5HO-N1X20-PCL125WG-MVOLT-GE810PS90-EL14DW
F4	2	F32T8/SP841	WET LOCATION LINEAR STRIP FIXTURE	277	SURFACE	LITHONIA EIS-2-32-PCL-MVOLT-GE810IS
F4E	2	F32T8/SP841	WET LOCATION LINEAR STRIP FIXTURE WITH EMERGENCY BATTERY PACK	277	SURFACE	LITHONIA EIS-2-32-PCL-MVOLT-GE810IS-EL14DW
H1	1	175MH/HOR	WALL MOUNTED METAL HALIDE WALL PACK WITH INTEGRAL PHOTOCELL	277	WALL 20" 0" AFG	LITHONIA TWP-175M-277-SCWA-PE-DBL
X1	-	LED	WET LOCATION LED EXIT SIGN WITH STENCIL LETERING STENCIL LETERING AND EMERGENCY BATTERY PACK	277	WALL SEE NOTE 1	LITHONIA LV-S/W-1-G-12277-EL-N-UM-SD
NOTES: 1 - MOUNTING HEIGHT SHALL BE 8'-0" ABOVE FINISHED FLOOR CENTERED ON DOOR FRAME.						

MECHANICAL EQUIPMENT SCHEDULE							
KEY	DESCRIPTION	LOAD	VOLT-PH	FEEDER	O.C. PROTECTION		REMARKS
					C.B	FUSE	
AC-1	AIR COMPRESSOR	50 HP	480-3	SEE NOTE 1	125A3P		DISCONNECTING MEANS PROVIDED AT MCC IN CONTROL ROOM
AC-2	AIR COMPRESSOR	50 HP	480-3	SEE NOTE 1	125A3P		DISCONNECTING MEANS PROVIDED AT MCC IN CONTROL ROOM
AD-1	AIR DRYER	1/2 HP	120-1	(2#12*#12G)	1/2 °C	20A1P	PROVIDE WP MOTOR RATED TOGGLE SWITCH
AD-2	AIR DRYER	1/2 HP	120-1	(2#12*#12G)	1/2 °C	20A1P	PROVIDE WP MOTOR RATED TOGGLE SWITCH
AG-1	AUGER TO BAGHOUSES	7 1/2 HP	480-3	SEE NOTE 1	20A3P		DISCONNECTING MEANS PROVIDED AT MCC IN CONTROL ROOM
AG-2	AUGER TO BUCKET ELEVATOR	10 HP	480-3	SEE NOTE 1	30A3P		DISCONNECTING MEANS PROVIDED AT MCC IN CONTROL ROOM
B-3	BOILER 3 - NAT GAS	50 HP	480-3	SEE NOTE 1	150A3P		DISCONNECTING MEANS PROVIDED AT MCC IN CONTROL ROOM
BCP-1	BOILER 1 CONTROL PANEL	150 A	480-3	SEE NOTE 1	150A3P		DISCONNECTING MEANS PROVIDED AT MCC IN CONTROL ROOM
BCP-2	BOILER 2 CONTROL PANEL	150 A	480-3	SEE NOTE 1	150A3P		DISCONNECTING MEANS PROVIDED AT MCC IN CONTROL ROOM
BE-1	BUCKET ELEVATOR	20 HP	480-3	SEE NOTE 1	60A3P		PROVIDE NEMA 4 FUSED DISCONNECT ON UNIT
BFP-1	BOILER FEED PUMP	7 1/2 HP	480-3	SEE NOTE 1	20A3P		DISCONNECTING MEANS PROVIDED AT MCC IN CONTROL ROOM
BFP-2	BOILER FEED PUMP	7 1/2 HP	480-3	SEE NOTE 1	20A3P		DISCONNECTING MEANS PROVIDED AT MCC IN CONTROL ROOM
BFP-3	BOILER FEED PUMP	7 1/2 HP	480-3	SEE NOTE 1	20A3P		DISCONNECTING MEANS PROVIDED AT MCC IN CONTROL ROOM
BH-1	BAGHOUSE 2 ROTARY AIR LOCK	1 HP	480-3	SEE NOTE 1	15A3P		DISCONNECTING MEANS PROVIDED AT MCC IN CONTROL ROOM
BH-2	BAGHOUSE 2 ROTARY AIR LOCK	1 HP	480-3	SEE NOTE 1	15A3P		DISCONNECTING MEANS PROVIDED AT MCC IN CONTROL ROOM
CAP-1	COAL FEED CONTROL PANEL	50 A	480-3	SEE NOTE 1	50A3P		DISCONNECTING MEANS PROVIDED AT MCC IN CONTROL ROOM
CAP-2	COAL FEED CONTROL PANEL	50 A	480-3	SEE NOTE 1	50A3P		DISCONNECTING MEANS PROVIDED AT MCC IN CONTROL ROOM
CF-1	CHEMICAL FEEDER	1/3 HP	120-1	(2#12*#12G)	1/2 °C	20A1P	PROVIDE WP MOTOR RATED TOGGLE SWITCH
CF-2	CHEMICAL FEEDER	1/3 HP	120-1	(2#12*#12G)	1/2 °C	20A1P	PROVIDE WP MOTOR RATED TOGGLE SWITCH
CF-3	CHEMICAL FEEDER	1/3 HP	120-1	(2#12*#12G)	1/2 °C	20A1P	PROVIDE WP MOTOR RATED TOGGLE SWITCH
CF-4	CHEMICAL FEEDER	1/3 HP	120-1	(2#12*#12G)	1/2 °C	20A1P	PROVIDE WP MOTOR RATED TOGGLE SWITCH
CF-5	CHEMICAL FEEDER	1/3 HP	120-1	(2#12*#12G)	1/2 °C	20A1P	PROVIDE WP MOTOR RATED TOGGLE SWITCH
CFA-1	COAL FEED AUGER	10 HP	480-3	SEE NOTE 1	30A3P		DISCONNECTING MEANS PROVIDED AT MCC IN CONTROL ROOM
CFA-2	COAL FEED AUGER	10 HP	480-3	SEE NOTE 1	30A3P		DISCONNECTING MEANS PROVIDED AT MCC IN CONTROL ROOM
CP-1	CONDENSATE RETURN PUMP	3 HP	480-3	SEE NOTE 1	20A3P		DISCONNECTING MEANS PROVIDED AT MCC IN CONTROL ROOM
CP-2	CONDENSATE RETURN PUMP	3 HP	480-3	SEE NOTE 1	20A3P		DISCONNECTING MEANS PROVIDED AT MCC IN CONTROL ROOM
CTP-1	COND. TRANS. PUMP	3 HP	480-3	SEE NOTE 1	20A3P		DISCONNECTING MEANS PROVIDED AT MCC IN CONTROL ROOM
CTP-2	COND. TRANS. PUMP	3 HP	480-3	SEE NOTE 1	20A3P		DISCONNECTING MEANS PROVIDED AT MCC IN CONTROL ROOM
SF-1	STACK FAN	50 HP	480-3	SEE NOTE 1	150A3P		DISCONNECTING MEANS PROVIDED AT MCC IN CONTROL ROOM
SF-2	STACK FAN	50 HP	480-3	SEE NOTE 1	150A3P		DISCONNECTING MEANS PROVIDED AT MCC IN CONTROL ROOM
UH-1	UNIT HEATER	1/20 HP	120-1	(2#12*#12G)	1/2 °C	20A1P	PROVIDE WP MOTOR RATED TOGGLE SWITCH
UH-2	UNIT HEATER	1/12 HP	120-1	(2#12*#12G)	1/2 °C	20A1P	PROVIDE WP MOTOR RATED TOGGLE SWITCH
UH-3	UNIT HEATER	1/8 HP	120-1	(2#12*#12G)	1/2 °C	20A1P	PROVIDE WP MOTOR RATED TOGGLE SWITCH
UH-4	UNIT HEATER	1/8 HP	120-1	(2#12*#12G)	1/2 °C	20A1P	PROVIDE WP MOTOR RATED TOGGLE SWITCH
UH-5	UNIT HEATER	1/8 HP	120-1	(2#12*#12G)	1/2 °C	20A1P	PROVIDE WP MOTOR RATED TOGGLE SWITCH
UH-6	UNIT HEATER	1/8 HP	120-1	(2#12*#12G)	1/2 °C	20A1P	PROVIDE WP MOTOR RATED TOGGLE SWITCH
UH-7	UNIT HEATER	1/3 HP	120-1	(2#12*#12G)	1/2 °C	20A1P	PROVIDE WP MOTOR RATED TOGGLE SWITCH
UH-8	UNIT HEATER	1/3 HP	120-1	(2#12*#12G)	1/2 °C	20A1P	PROVIDE WP MOTOR RATED TOGGLE SWITCH
NOTES: 1. REFER TO ONE-LINE DIAGRAM FOR APPROPRIATE FEEDER AND CONDUIT SIZE.							

TVSS		MCC-MAIN																			"		FEEDER/PANEL										"BAY	
		PANEL 90EQAL	PANEL 90EQAR	PANEL 90EQAS (FUTURE)	PANEL 90EQAS1 (FUTURE)	BH-1 & BH-2	AG-1 & AG-2	B-3	BE-1	BFP-2, BFP-3, & BFP-4	CP-1 & CP-2	(2) COAL FEED AUGERS	AC-1 & AC-2	BCP-1 & BCP-2	SF-1 & SF-2	CTP-1 & CTP-2	SILLO JIB HOIST	COAL APRON FEED	CAR PULLER	CAR SHAKER	COAL ELEV HOIST	HOT WELL PUMPS												
LIGHTING		11.3	0.0																															
RECEPT. (FIRST 10 KW)		0.0	10.0																															
RECEPT. (REMAINDER)		0.0	12.9																															
MOTORS		0.0	9.7			3.3	19.9		21.5	17.5	3.8	11.2	41.4	124.6	103.6	3.8	2.5	3.8	11.2	16.7	16.7	5.4												
LARGEST MOTOR		0.0	1.2					67.6																										
APPLIANCES		0.0	0.0																															
EQUIPMENT		0.0	3.6																															
HEATING		0.0	0.0																															
EXISTING		0.0	0.0																															
OTHER		27.4	0.0																															
		CONNECTED KVA		D.F.	DEMAND KVA																													
LIGHTING		11.3		1.25		14.1	800 AMP 277 / 480 VOLT 3 PHASE																											
RECEPT. (FIRST 10 KW)		10.0		1.00		10.0	SEE 1-LINE A/C 4 WIRE SERVICE																											
RECEPT. (REMAINDER)		12.9		0.50		6.5	800 A MAIN CB 100% NEUTRAL BUS																											
MOTORS		417.9		1.50		417.9																												
LARGEST MOTOR		67.6		1.25		94.4																												
APPLIANCES		0.0		1.00		0.0	TOTAL CONNECTED LOAD 550.6 KVA = 662.2 AMPS																											
EQUIPMENT		3.6		1.00		3.6	TOTAL DEMAND LOAD 563.8 KVA = 678.2 AMPS																											
HEATING		0.0		1.00		0.0	TOTAL DESIGN CAPACITY 665.1 KVA = 800.0 AMPS																											
EXISTING		0.0		1.25		0.0	SPARE 101.3 KVA = 121.8 AMPS																											
OTHER		27.4		1.00		27.4																												
								</																										

CONSULTANTS:

MKK Consulting Engineers, Inc.
7600 East Orchard Road
Suite 250S
Greenwood Village, CO 80111
Phone: 303.796.6000
Fax: 303.796.6099

Calibre
9090 S Ridgeline Blvd.
Suite 105
Highlands Ranch, CO 80129
Phone: 303.730.0434
Fax: 303.730.1130

Structural Consultants Inc.
3400 E Bayaud Ave # 300
Denver, CO 80209-2929
Phone: 303.399.5154
Fax: 303.333.9501



ARCHITECT/ENGINEERS:

GREENFIELD ARCHITECTS
3650 S YOSEMITE ST, STE 402
DENVER, CO 80237
PHONE: 303-770-1020
FAX: 303-770-0922

GA Project Number 666-10-811

SCHEDULES

Approved: Project Director
JASON BROWN

Project Title
-BOILER PLANT
-REPLACEMENT
-

Location
- SHERIDAN, WY

Date
12/15/2011
BIDDING & CNSTN

Checked
KMS

Drawn
BNC

Project Number
- 666-11-101

Building Number
- 90

Drawing Number
E1201

Dwg. of --

Office of
Construction
and Facilities
Management



