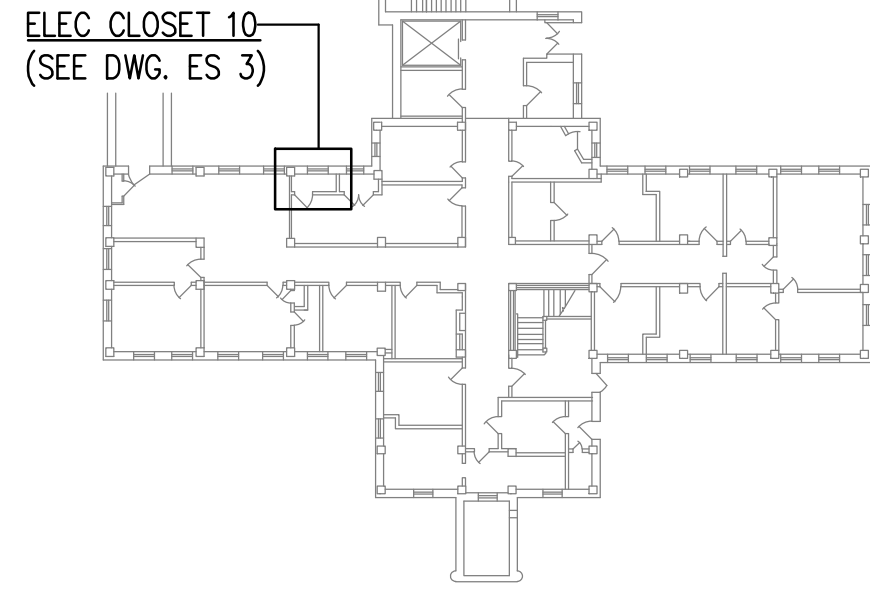
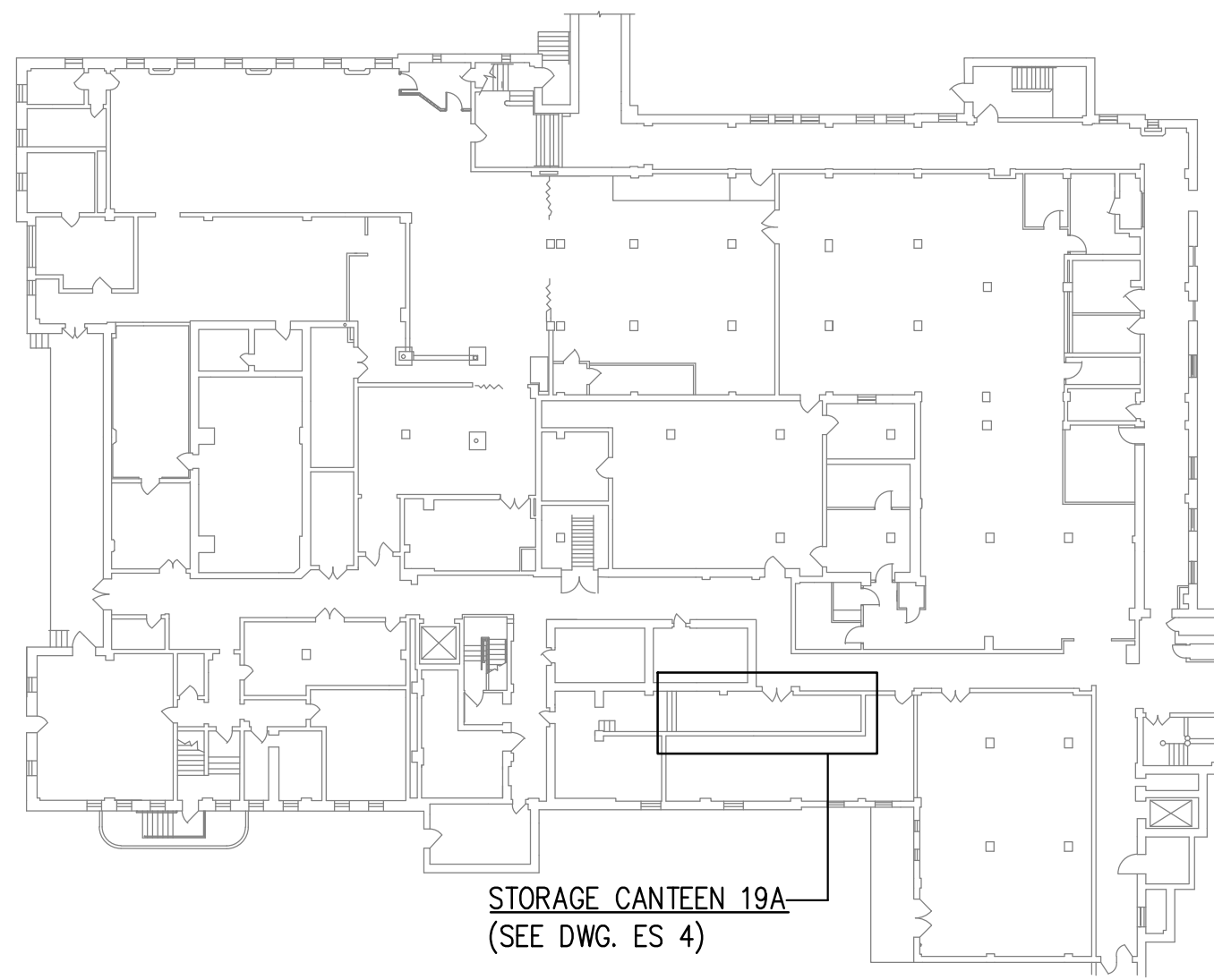


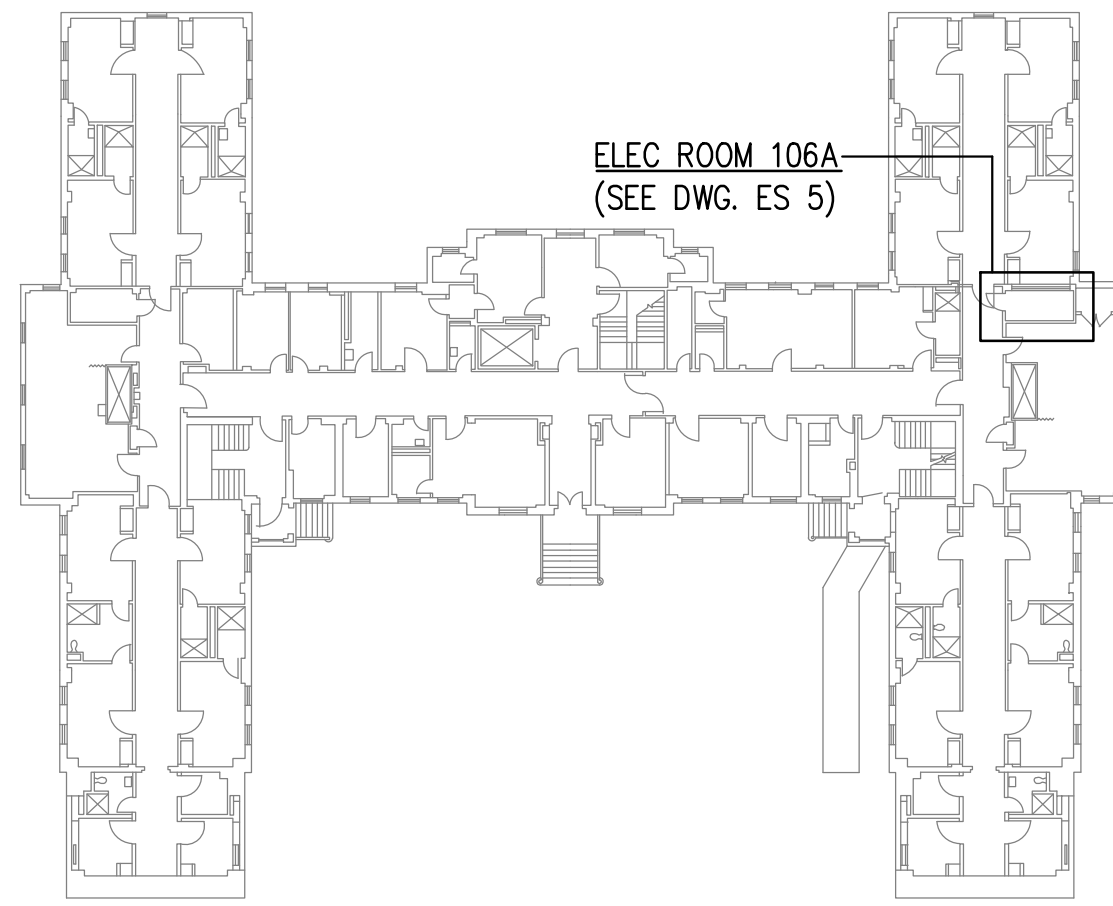
three inches = one foot
one and one-half inches = one foot
one inch = one foot
three-quarters inch = one foot
one-half inch = one foot
three-eighths inch = one foot
one-quarter inch = one foot
one-eighth inch = one foot



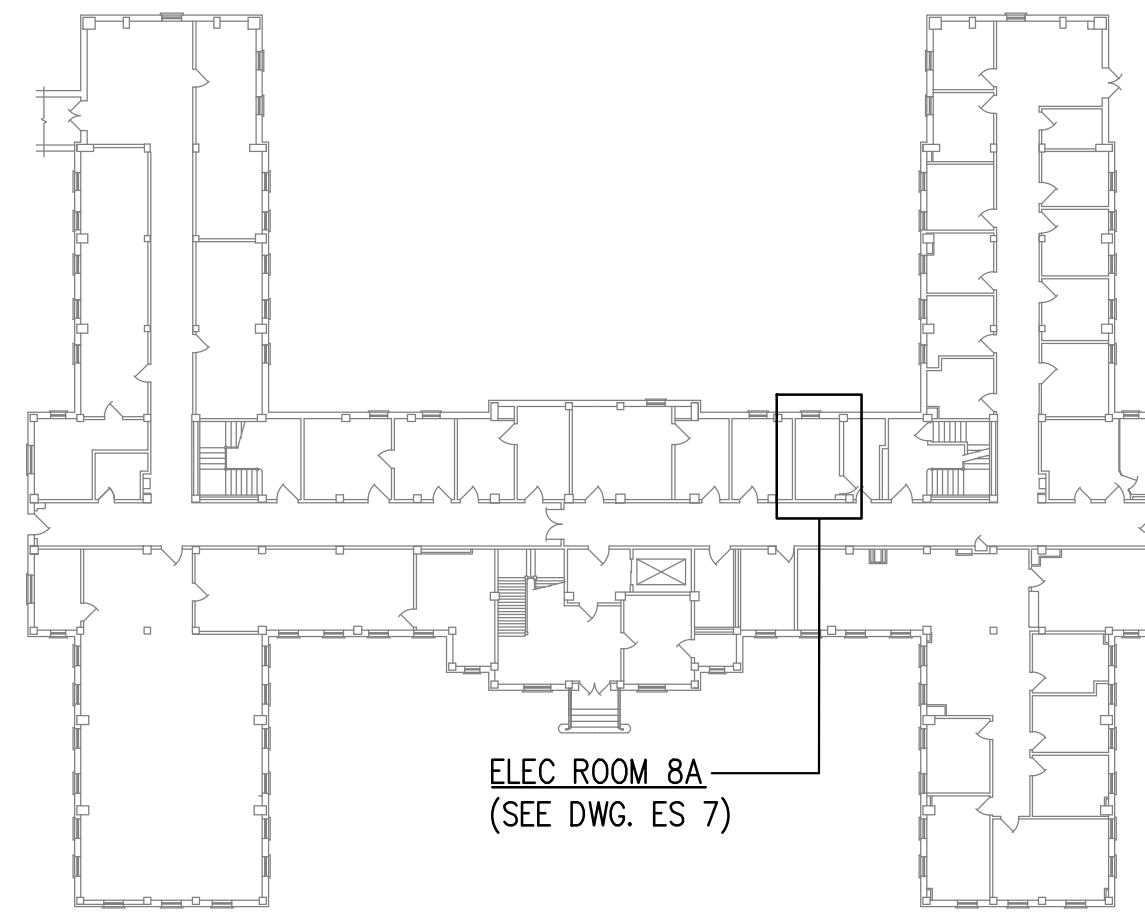
**BASEMENT FLOOR
KEYPLAN BLDG. 1**
NO SCALE



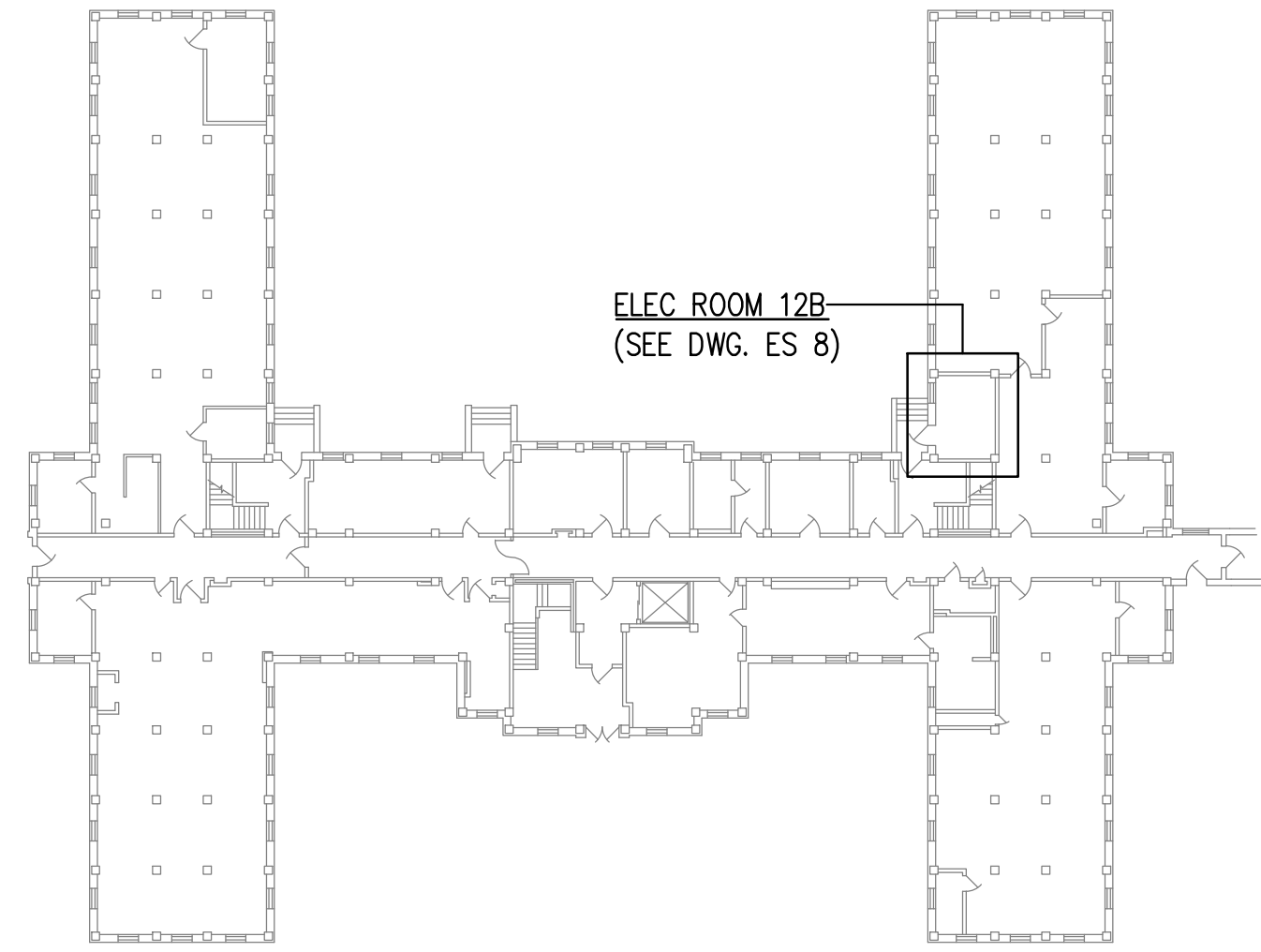
**BASEMENT FLOOR
KEYPLAN BLDG. 4**
NO SCALE



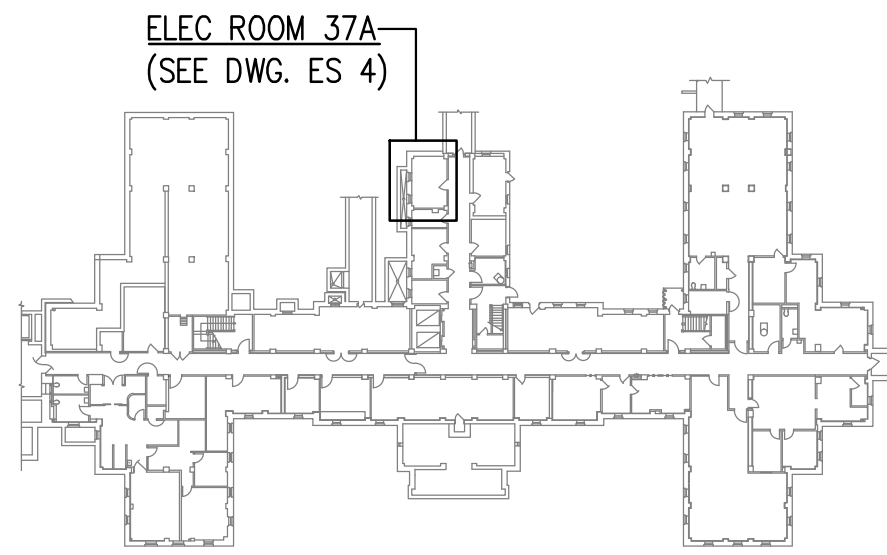
**FIRST FLOOR
KEYPLAN BLDG. 8**
NO SCALE



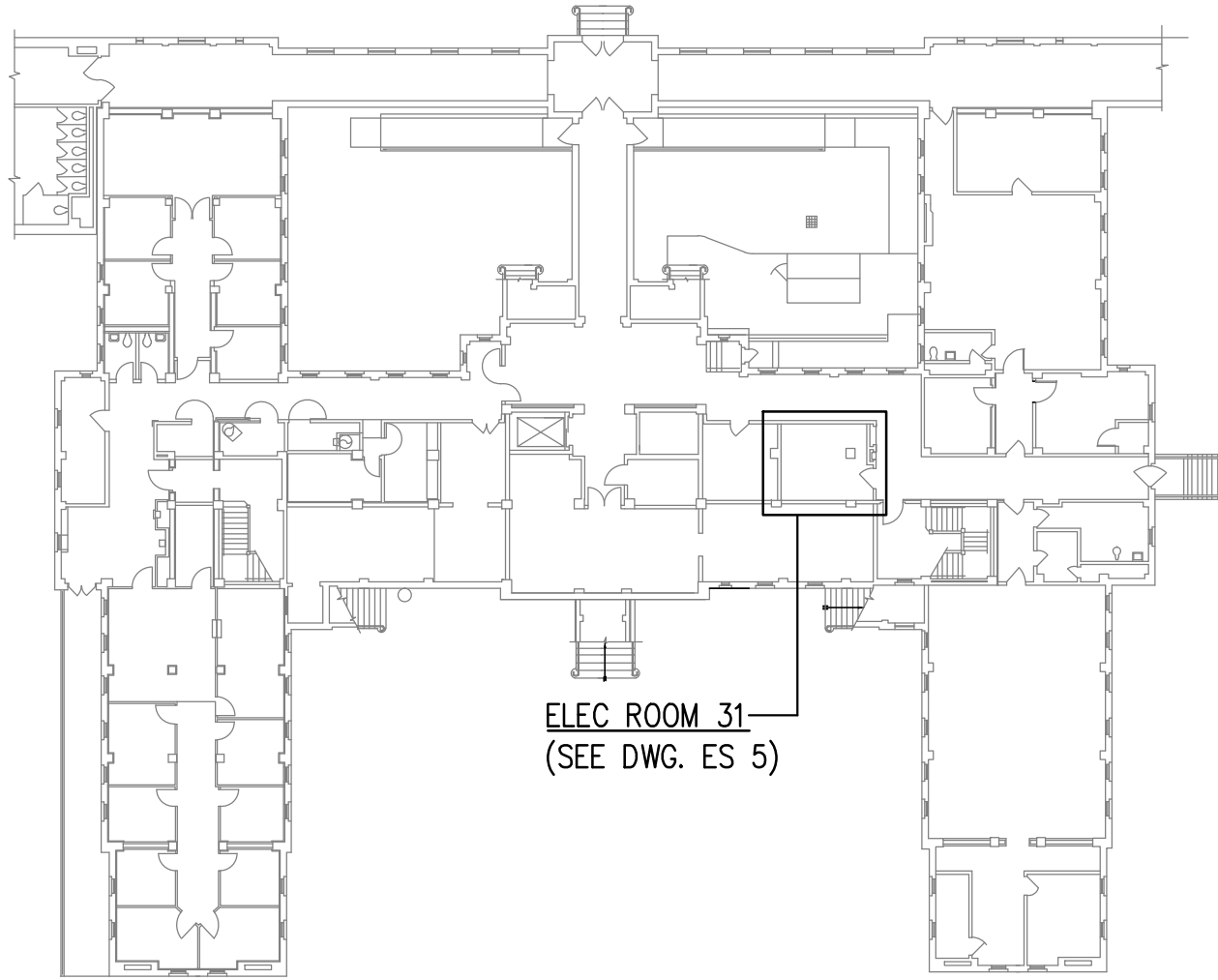
**BASEMENT FLOOR
KEYPLAN BLDG. 11**
NO SCALE



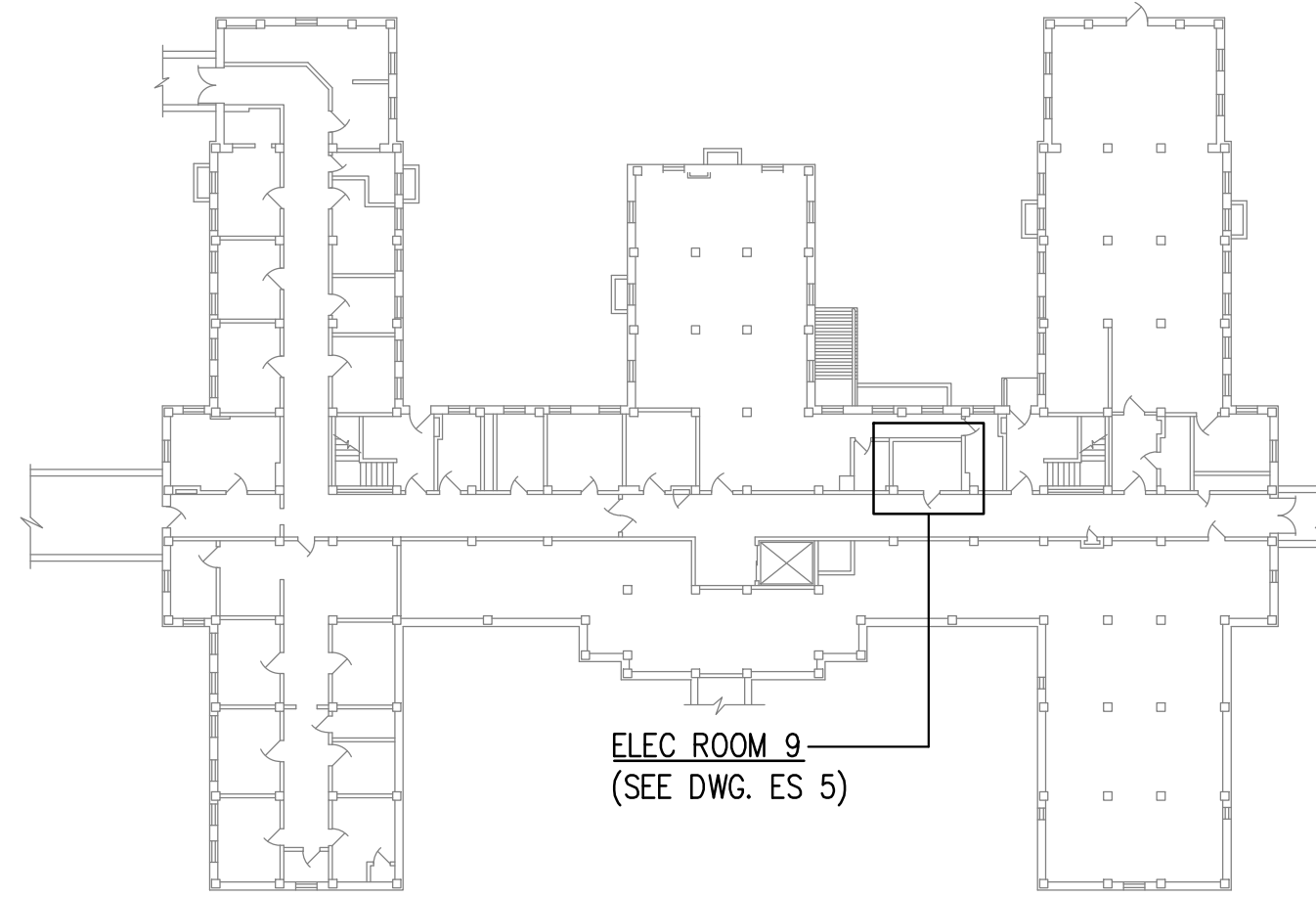
**BASEMENT FLOOR
KEYPLAN BLDG. 75**
NO SCALE



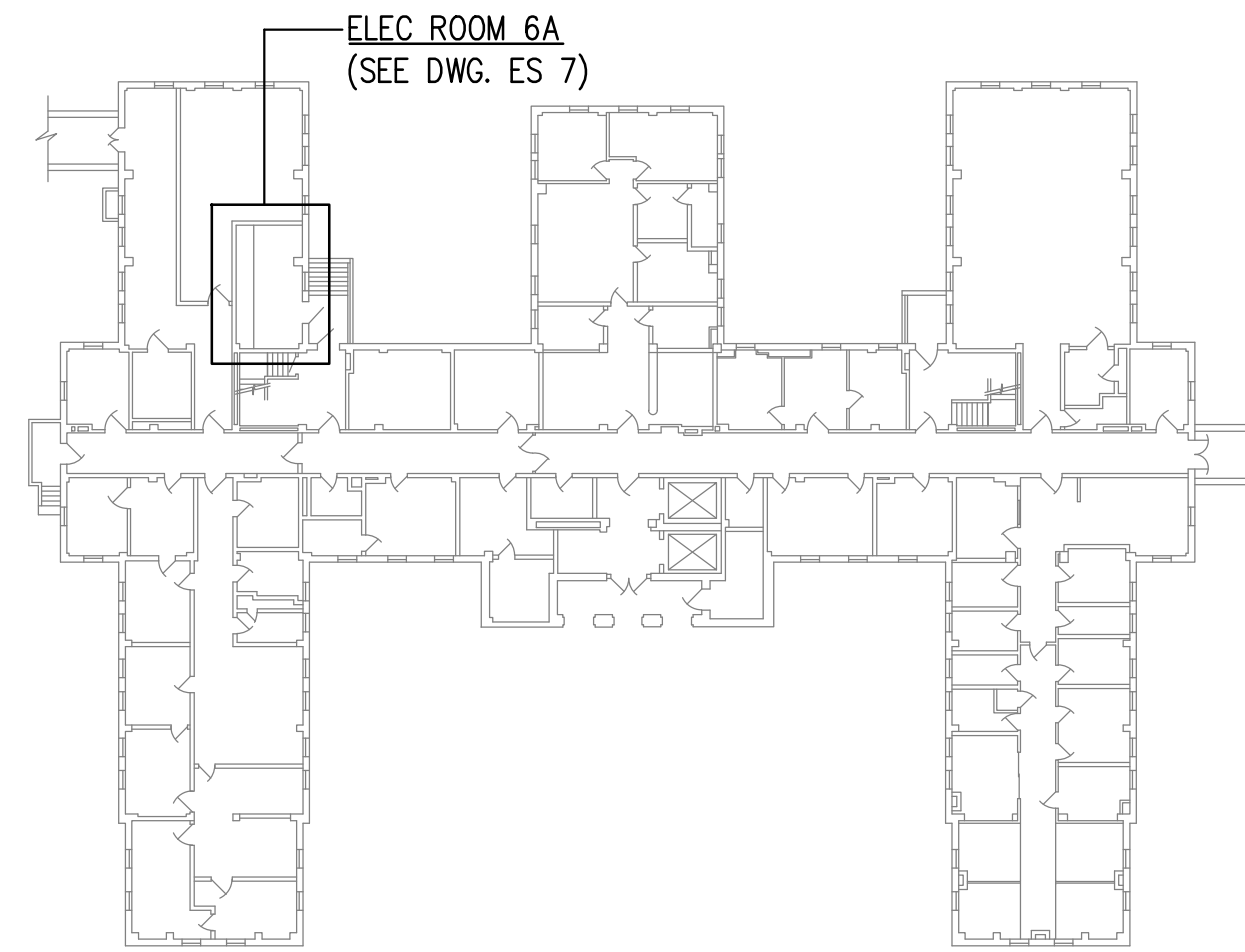
**BASEMENT FLOOR
KEYPLAN BLDG. 2**
NO SCALE



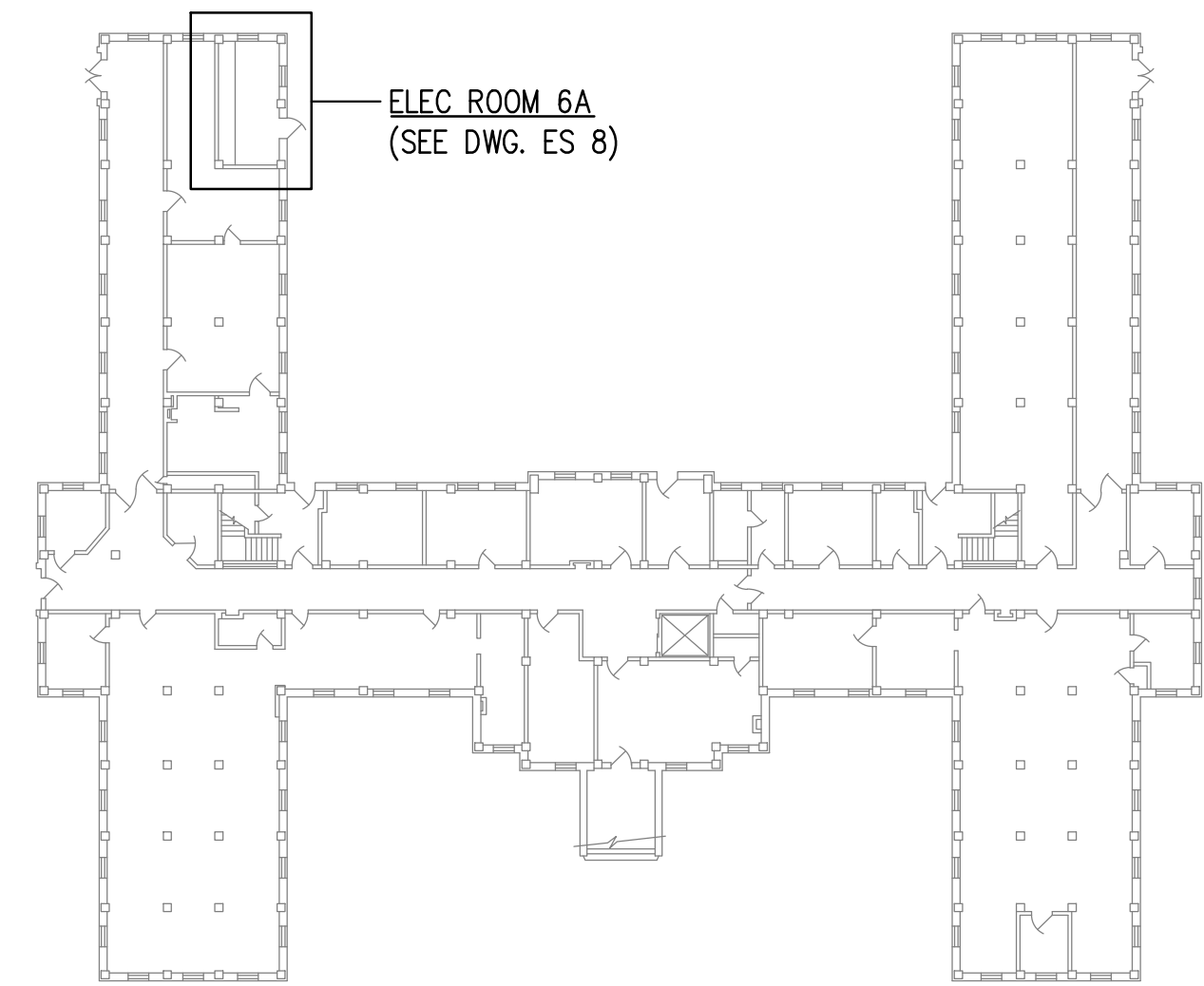
**BASEMENT FLOOR
KEYPLAN BLDG. 7**
NO SCALE



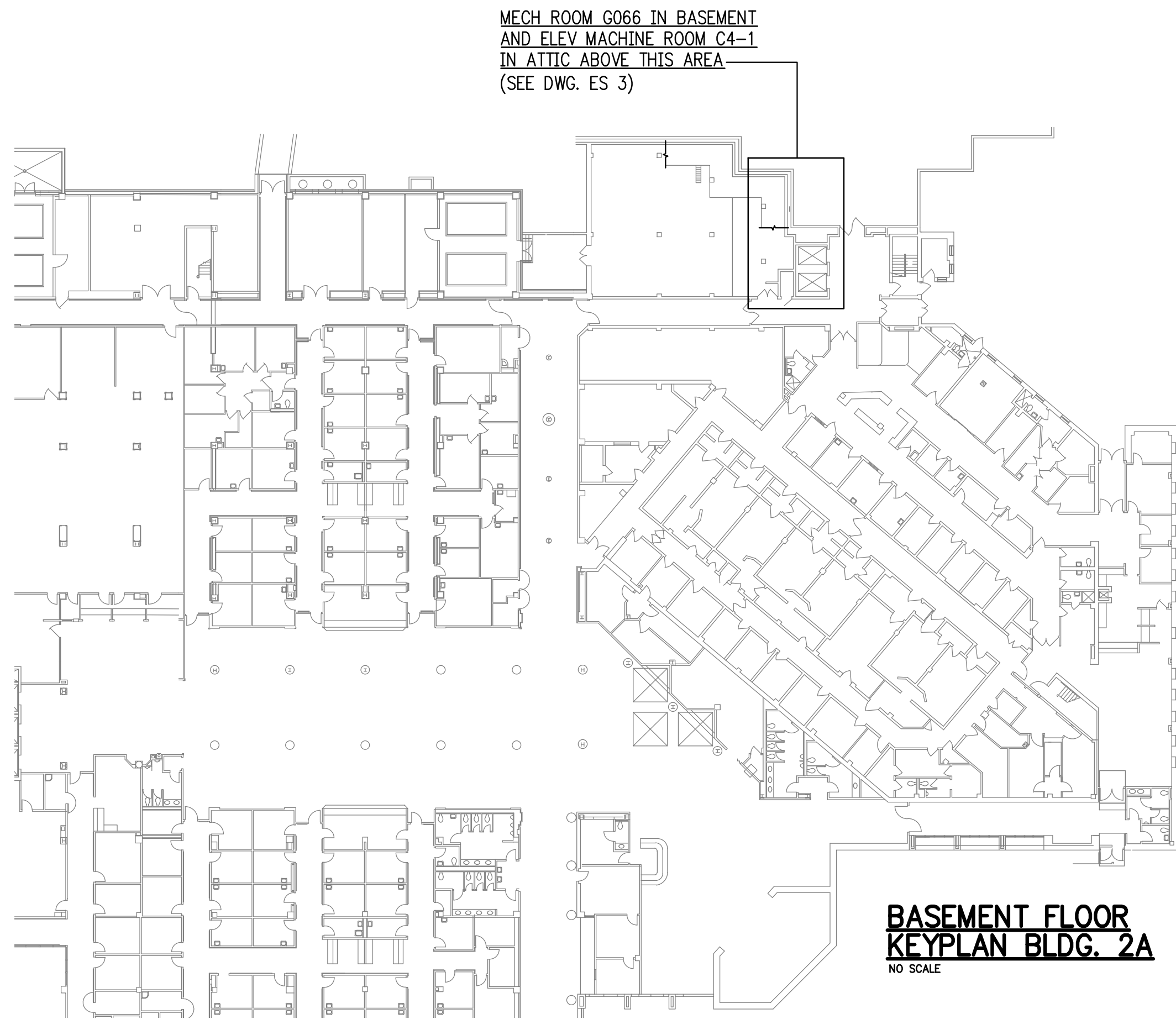
**BASEMENT FLOOR
KEYPLAN BLDG. 9**
NO SCALE



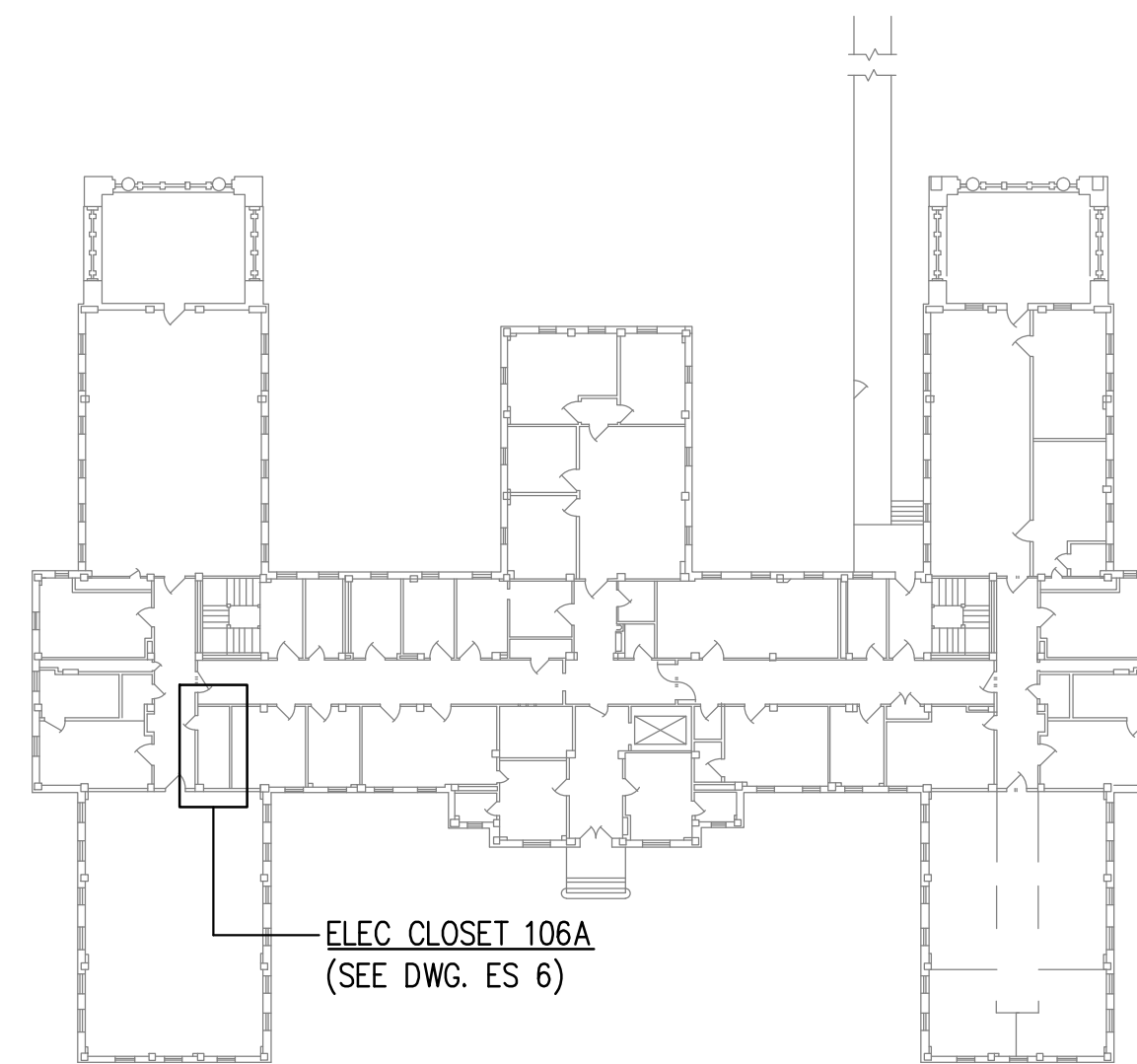
**BASEMENT FLOOR
KEYPLAN BLDG. 12**
NO SCALE



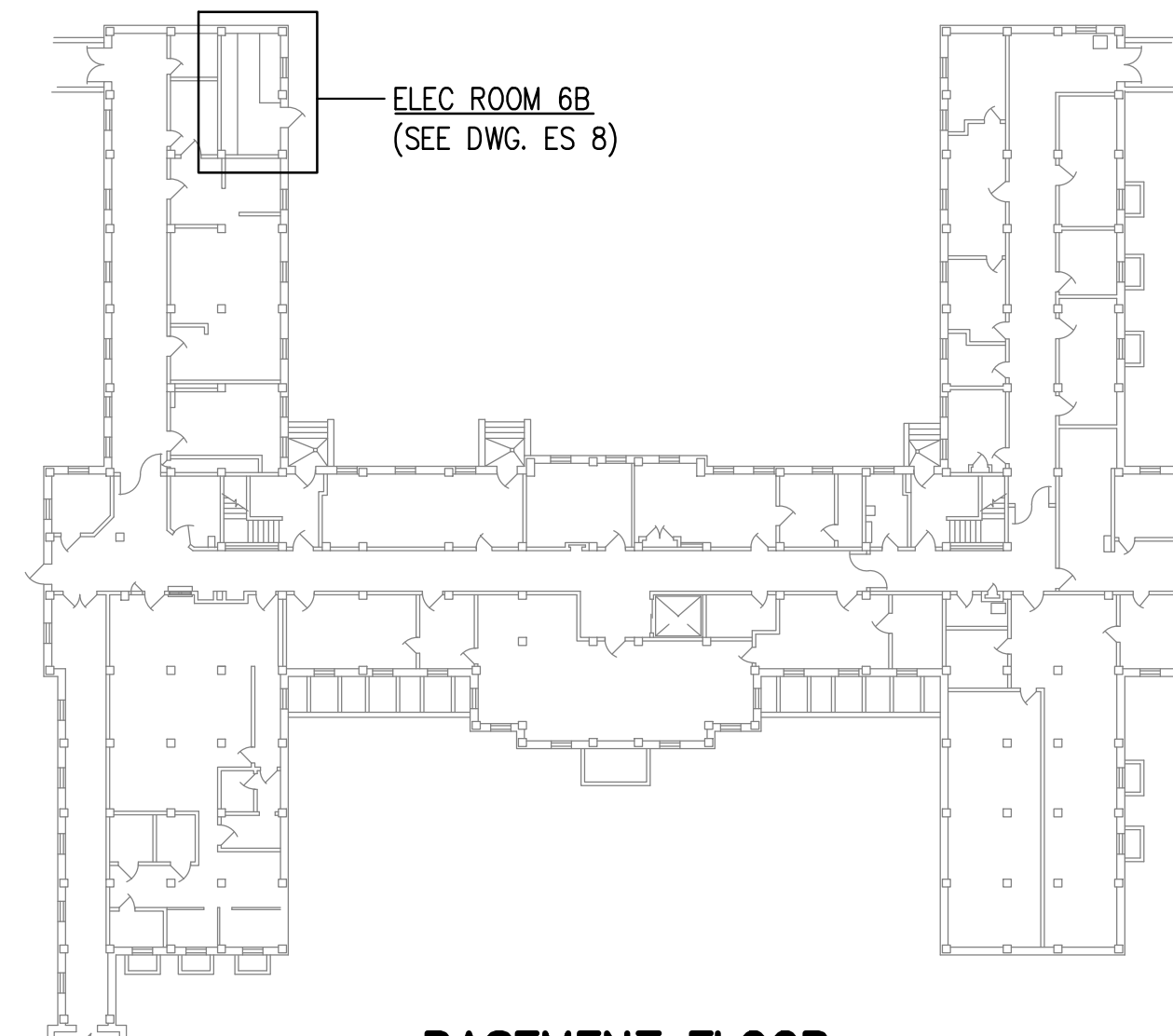
**BASEMENT FLOOR
KEYPLAN BLDG. 76**
NO SCALE



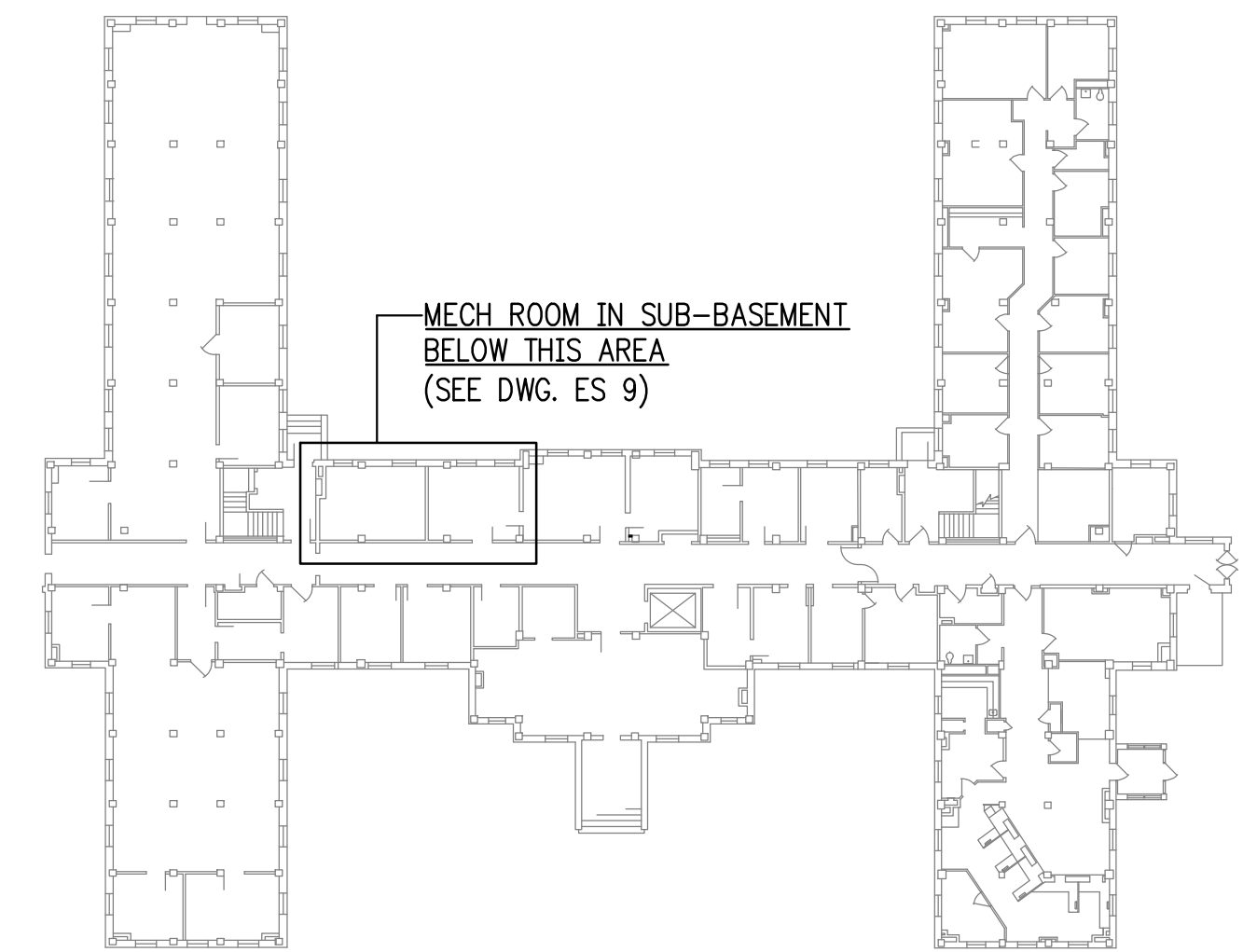
**BASEMENT FLOOR
KEYPLAN BLDG. 2A**
NO SCALE




**FIRST FLOOR
KEYPLAN BLDG. 10**
NO SCALE



**BASEMENT FLOOR
KEYPLAN BLDG. 74**
NO SCALE



**BASEMENT FLOOR
KEYPLAN BLDG. 77**
NO SCALE

				 Lawrence Perry & Associates, Inc. Mechanical and Electrical Engineers 11 E. Salem Avenue SE, Suite 101 - Roanoke, Virginia 24011 Ph: (540) 342-1816 Fax: (540) 344-3410 Comm. No.: 10135 ©2012 Lawrence Perry and Associates, Inc.	APPROVED: Energy Engineer		APPROVED: Safety Manager		APPROVED: Service Chief		DRAWING TITLE ELECTRICAL KEYPLANS		PROJECT TITLE UPGRADE ELECTRICAL SYSTEM (REPLACE ATS)		DATE 02-17-12		Veterans Affairs
					APPROVED: Infection Control Officer		APPROVED: Chief of Staff		APPROVED: Chief of Facility Management Svc.		BUILDING NUMBER		CHECKED NAC	DRAWN WDC/RGW	PROJECT NO. 658-12-106		
					APPROVED: GEMS Coordinator		APPROVED: Associate Director		APPROVED: Medical Center Director						DRAWING NO. ES 2		
REVISIONS		BY	DATE								LOCATION V.A.M.C. SALEM, VA. 24153				DWG. 3 OF 13		