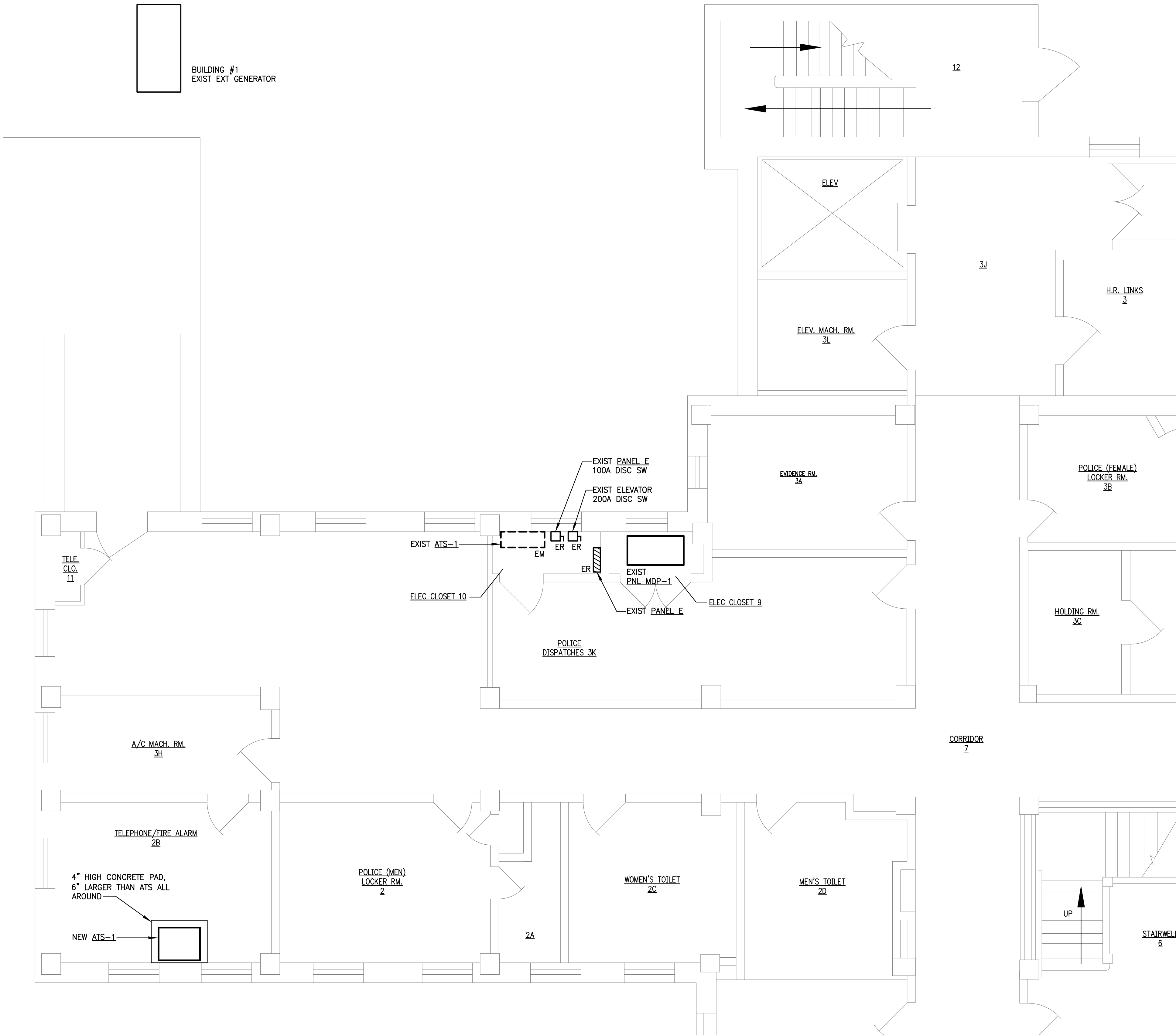
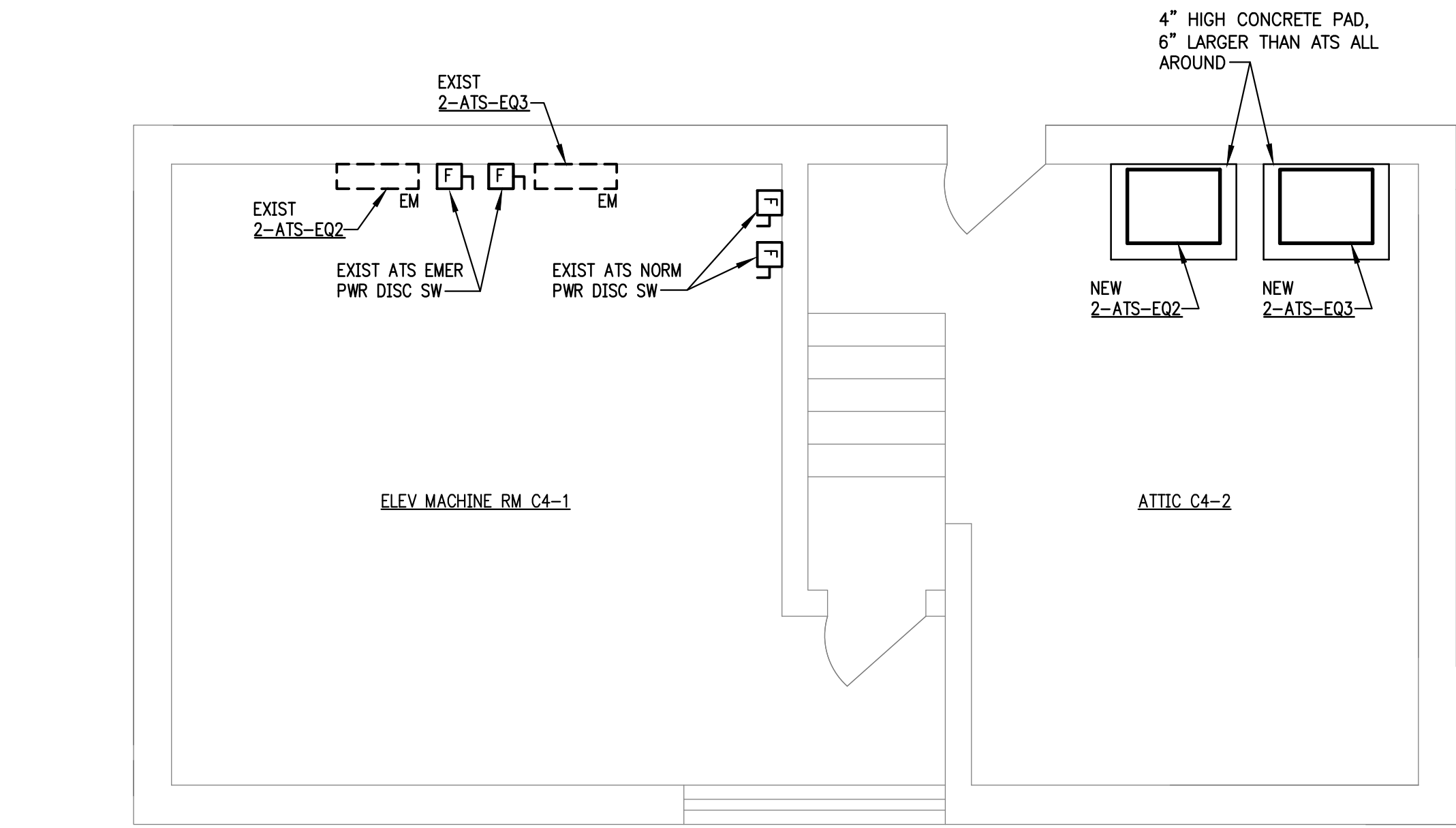


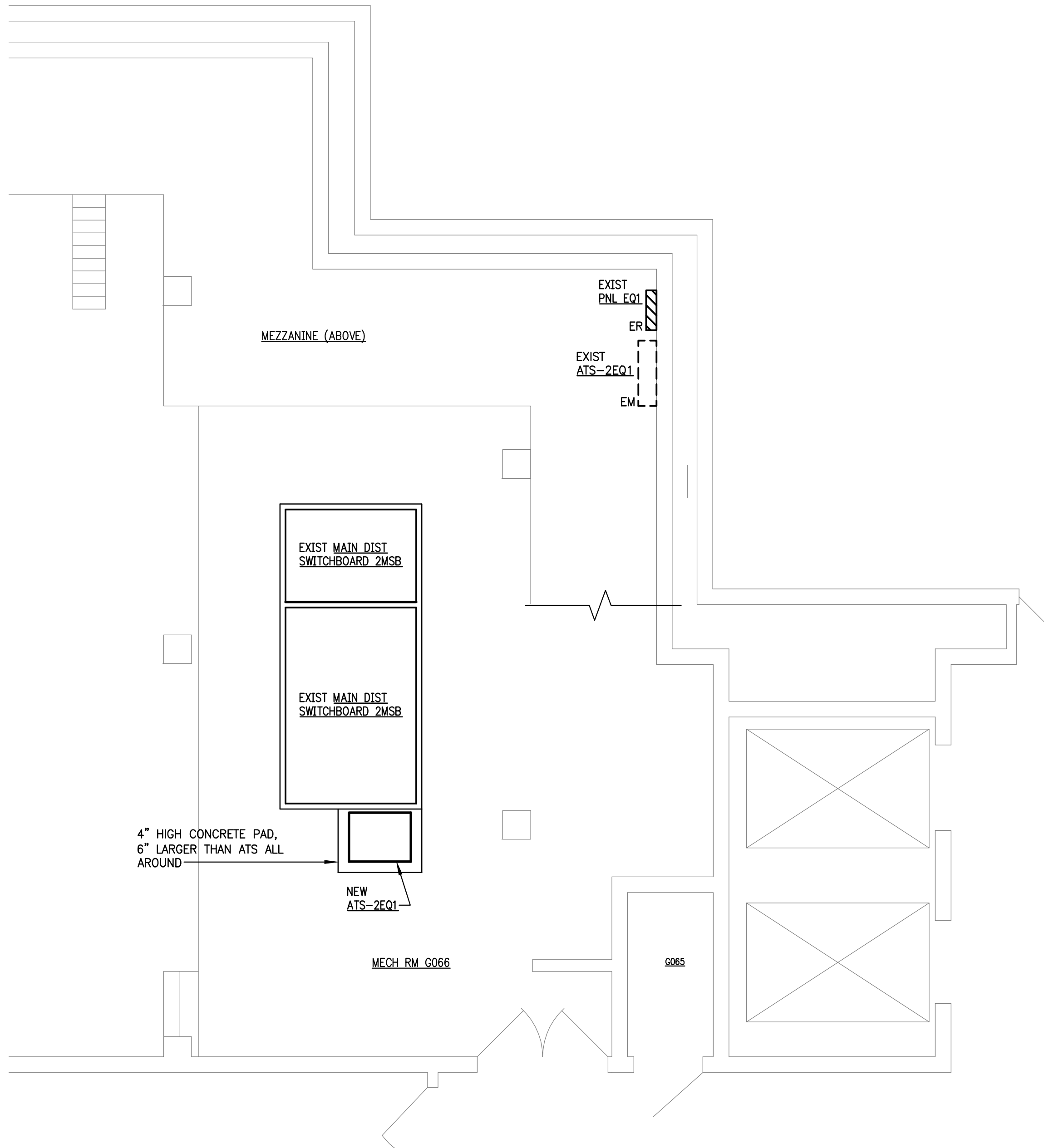
three inches = one foot  
one and one-half inches = one foot  
one inch = one foot  
three-quarters inch = one foot  
one-half inch = one foot  
three-eighths inch = one foot  
one-quarter inch = one foot  
one-eighth inch = one foot




**BLDG 1**  
**PARTIAL BASEMENT FLOOR PLAN – POWER**  
SCALE: 1/4" = 1'-0"



**BLDG 2A**  
**PARTIAL ATTIC FLOOR PLAN – POWER**  
SCALE: 1/4" = 1'-0"



**BLDG 2A**  
**PARTIAL BASEMENT FLOOR PLAN – POWER**  
SCALE: 1/4" = 1'-0"

				<div><div><div><div><div><div></div><div>COMMONWEALTH OF VIRGINIA</div><div>PROFESSIONAL ENGINEER</div></div><div><div>NEAL A. CRAMER</div><div>Lic. No. 41825</div></div><div></div></div></div><div><div><div><div></div><div>Lawrence Perry &amp; Associates, Inc.</div><div>Mechanical and Electrical Engineers</div></div><div><div>11 E. Salem Avenue SE, Suite 101</div><div>Roanoke, Virginia 24001</div><div>Ph: (540) 342-1816 Fax: (540) 344-3410</div><div>Comm. No.: 10135</div><div>©2012 Lawrence Perry and Associates, Inc.</div></div></div></div></div></div>										APPROVED: Energy Engineer		APPROVED: Safety Manager		APPROVED: Service Chief		DRAWING TITLE BUILDINGS 1 AND 2A PARTIAL FLOOR PLANS - POWER		PROJECT TITLE UPGRADE ELECTRICAL SYSTEM (REPLACE ATS)		DATE 02-17-12		Veterans Affairs
						APPROVED: Infection Control Officer		APPROVED: Chief of Staff		PROJECT NO. 658-12-106																
						APPROVED: GEMS Coordinator		APPROVED: Associate Director		DRAWING NO. ES 3																
REVISIONS		BY	DATE					APPROVED: Chief of Facility Management Svc.		BUILDING NUMBER 1 AND 2A		CHECKED NAC	DRAWN WDC/RGW	DWG. 4 OF 13												
								APPROVED: Medical Center Director		LOCATION V.A.M.C. SALEM, VA. 24153																