

three inches = one foot

one and one-half inches = one foot

one inch = one foot

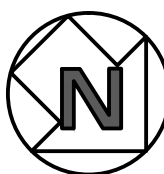
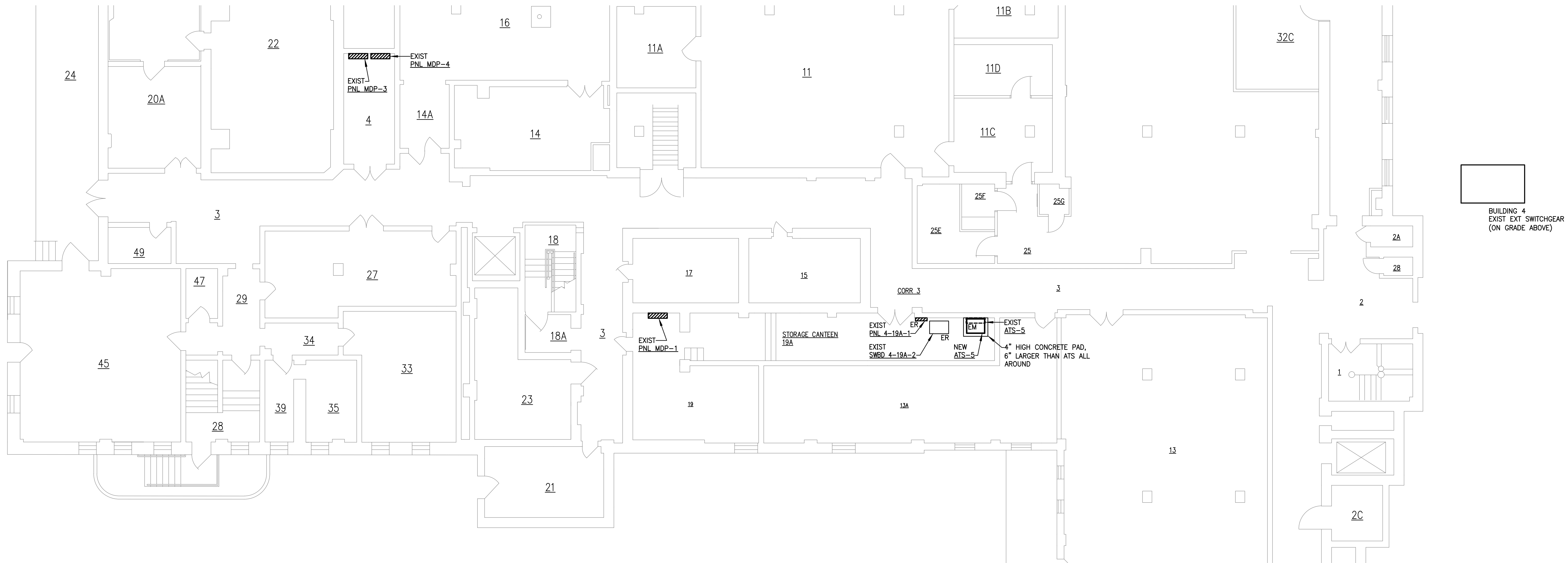
three-quarters inch = one foot

one-half inch = one foot

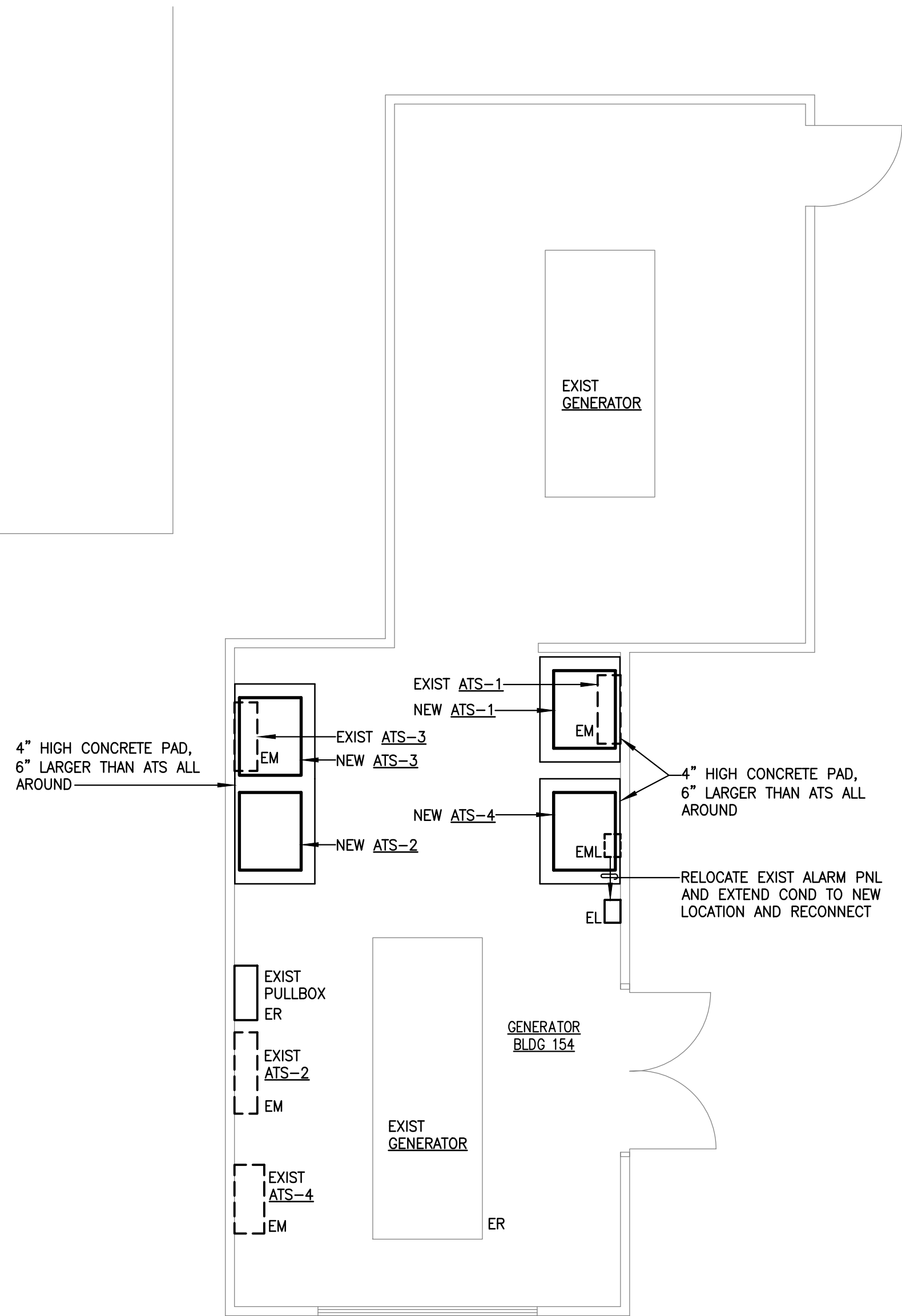
three-eighths inch = one foot

one-quarter inch = one foot

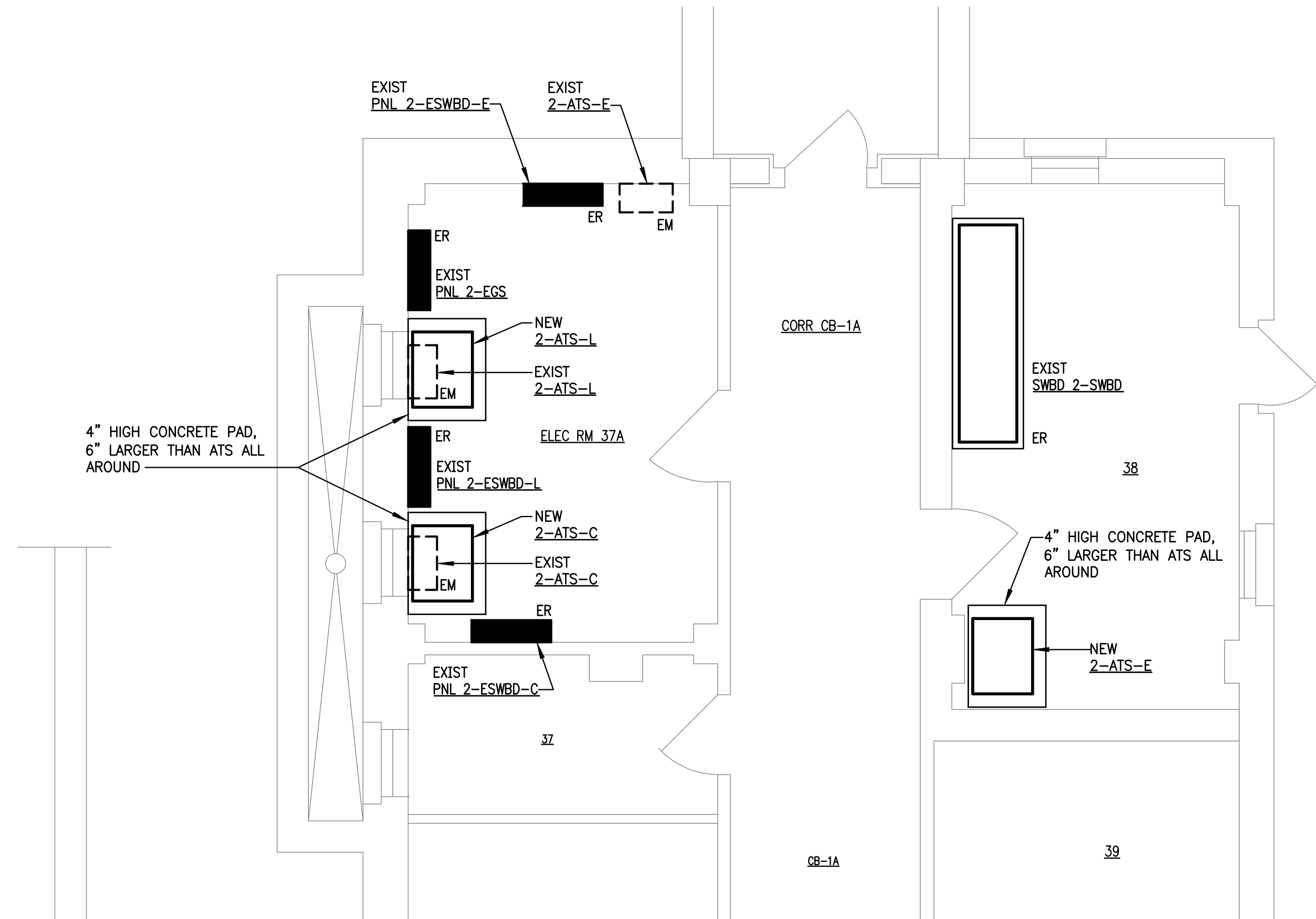
one-eighth inch = one foot



**BLDG 4**  
**PARTIAL BASEMENT FLOOR PLAN – POWER**  
SCALE: 1/8" = 1'-0"



**BLDG 154**  
**GENERATOR BLDG – POWER**  
SCALE: 1/4" = 1'-0"



**BLDG 2**  
**PARTIAL BASEMENT FLOOR PLAN – POWER**  
SCALE: 1/4" = 1'-0"

				<div><div><div>COMMONWEALTH OF VIRGINIA</div><div>NEAL A. CRAMER</div><div>Lic. No. 41825</div><div><i>NAC</i></div><div>PROFESSIONAL ENGINEER</div></div><div><div>Lawrence Perry &amp; Associates, Inc.</div><div>Mechanical and Electrical Engineers</div><div>11 E. Salem Avenue SE, Suite 101    Roanoke, Virginia 24011</div><div>Ph: (540) 342-1816    Fax: (540) 344-3410</div><div>Comm. No.: 10135</div><div>©2012 Lawrence Perry and Associates, Inc.</div></div></div>	APPROVED: Energy Engineer		APPROVED: Safety Manager		APPROVED: Service Chief		DRAWING TITLE BUILDINGS 2, 4 AND 154 PARTIAL FLOOR PLANS - POWER		PROJECT TITLE UPGRADE ELECTRICAL SYSTEM (REPLACE ATS)		DATE 02-17-12		Veterans Affairs
					APPROVED: Infection Control Officer		APPROVED: Chief of Staff		APPROVED: Chief of Facility Management Svc.		BUILDING NUMBER 2, 4 AND 154		CHECKED NAC	DRAWN WDC/RGW	PROJECT NO. 658-12-106		
					APPROVED: GEMS Coordinator		APPROVED: Associate Director		APPROVED: Medical Center Director						DRAWING NO. ES 4		
															DWG. 5 OF 13		
REVISIONS				BY	DATE												