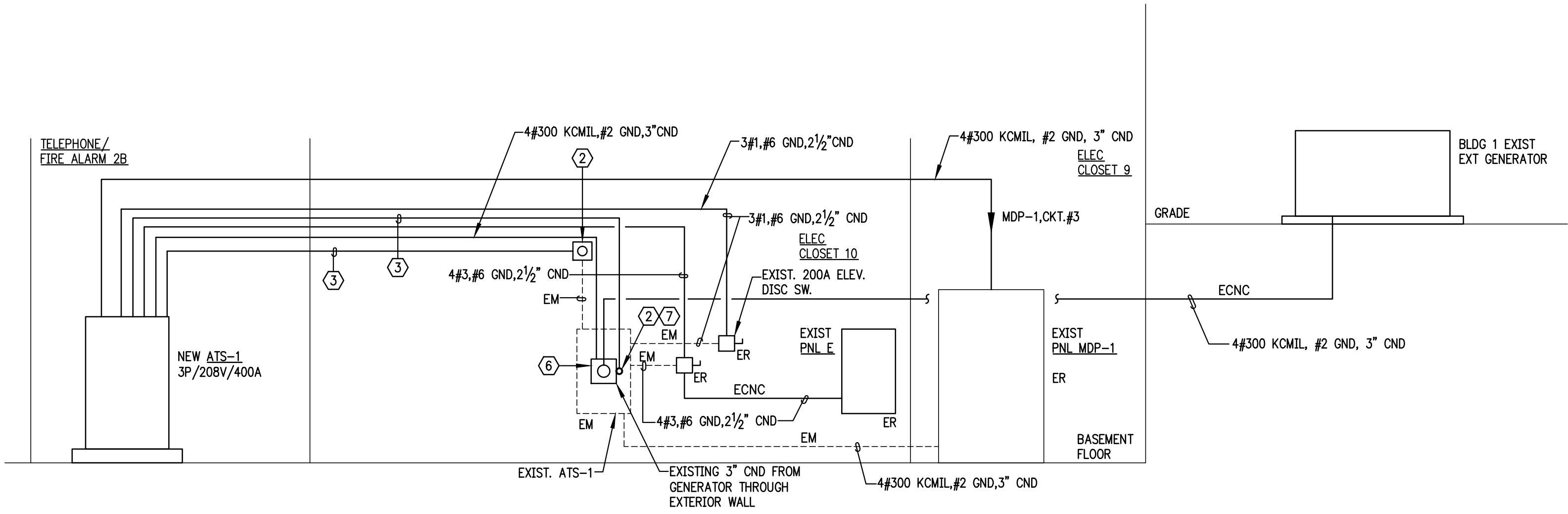
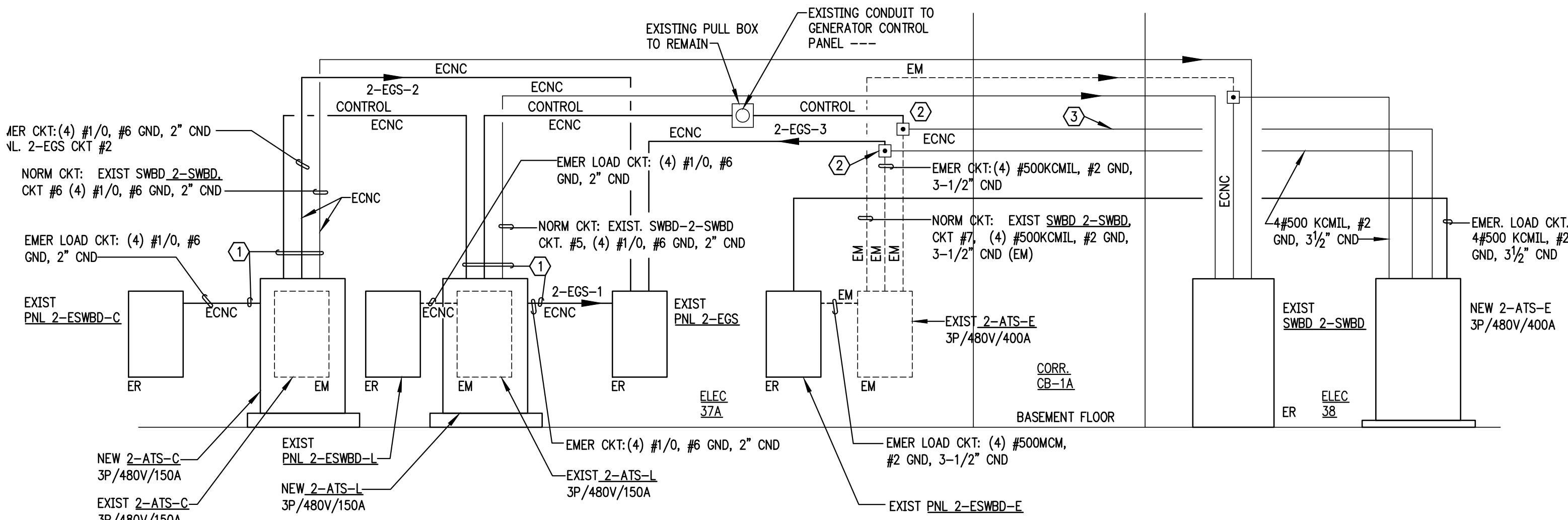


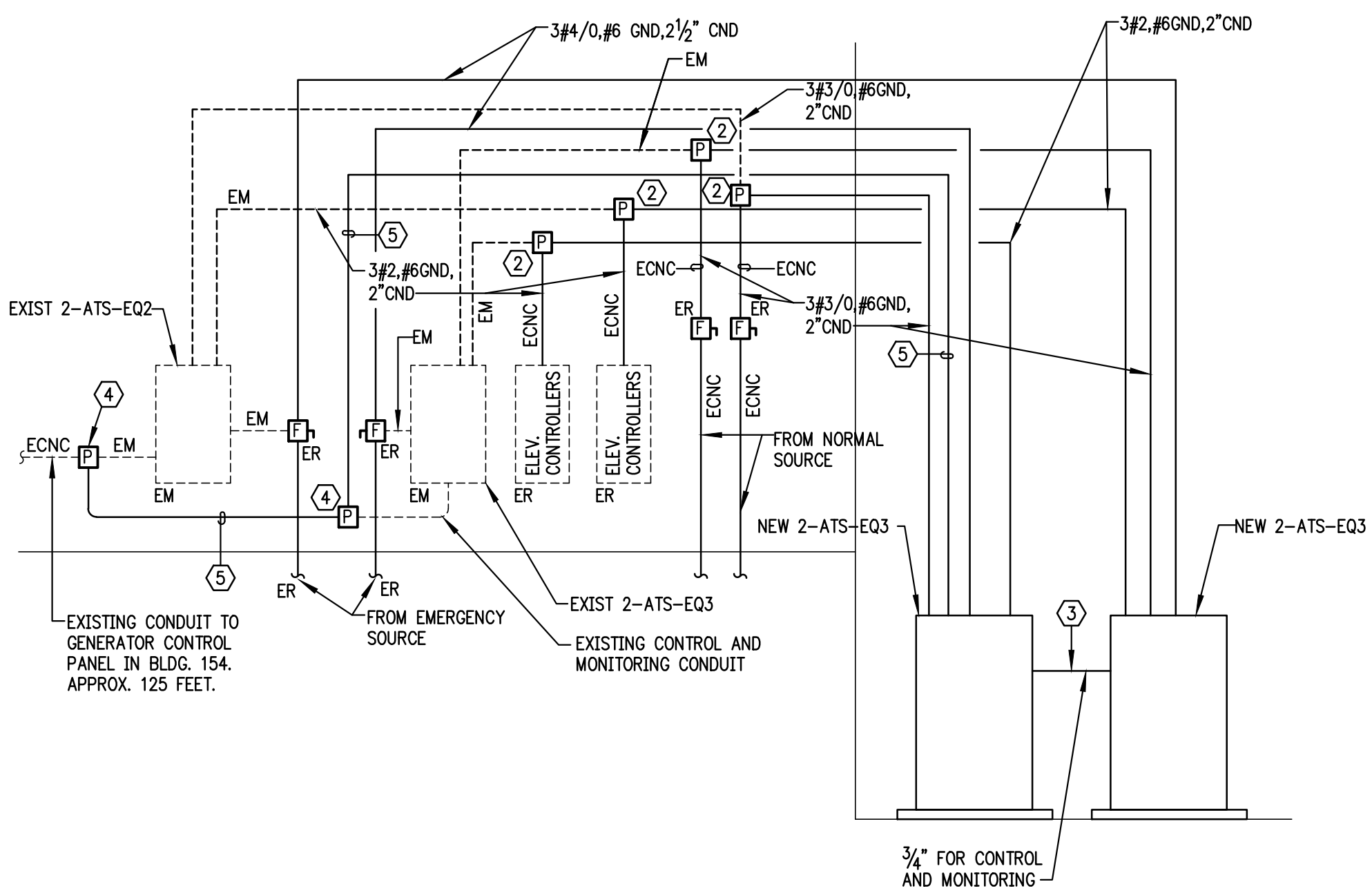
three inches = one foot
one and one-half inches = one foot
one inch = one foot
three-quarters inch = one foot
one-half inch = one foot
three-eighths inch = one foot
one-quarter inch = one foot
one-eighth inch = one foot



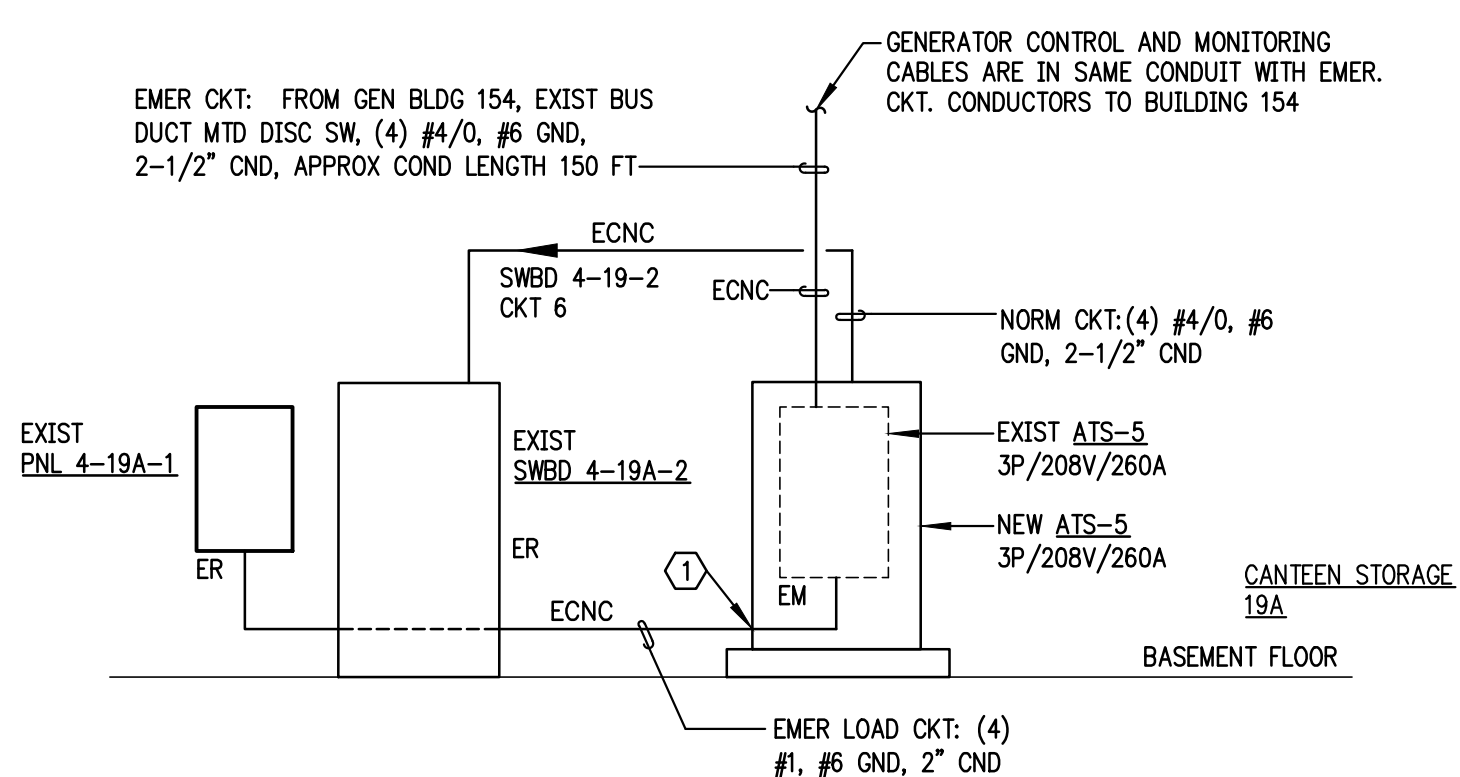
PARTIAL EMER POWER RISER DIAGRAM – BLDG. 1
SCHEMATIC



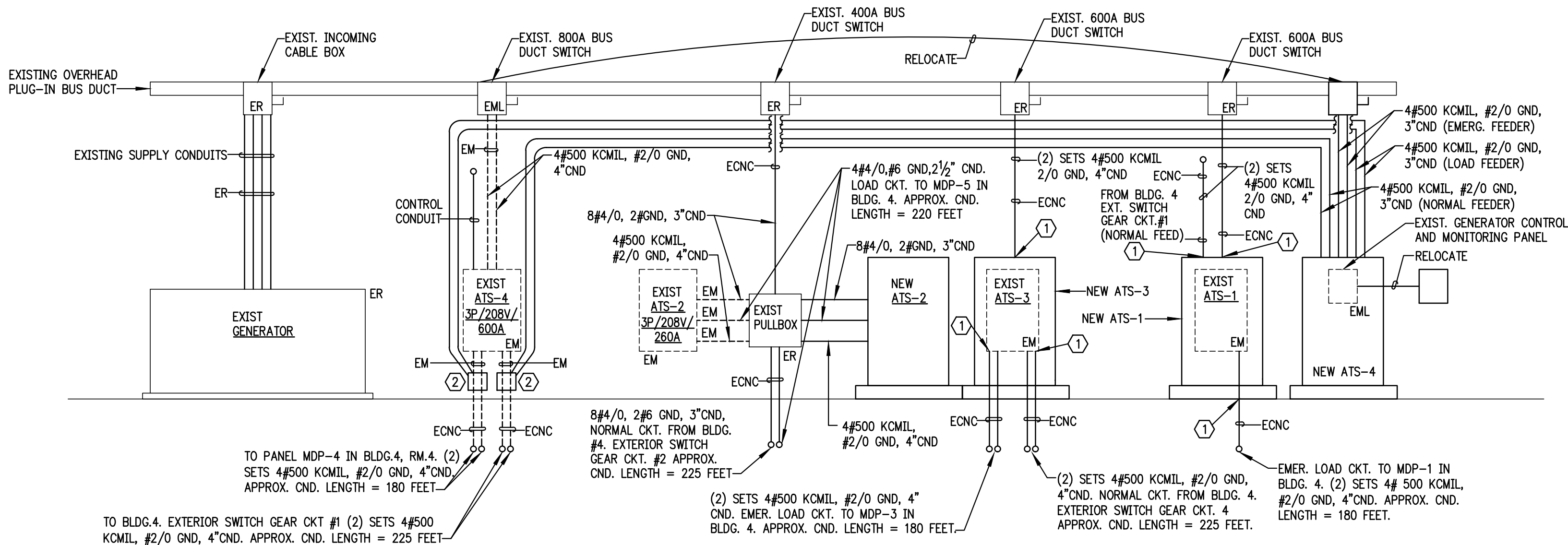
PARTIAL EMER POWER RISER DIAGRAM – BLDG. 2
SCHEMATIC



PARTIAL EMER POWER RISER DIAGRAM – BLDG. 2A
SCHEMATIC



PARTIAL EMER POWER RISER DIAGRAM – BLDG. 4
SCHEMATIC



PARTIAL EMER POWER RISER DIAGRAM – GENERATOR BLDG. 154
SCHEMATIC

PLAN NOTES FOR RISER DIAGRAM SHEETS ES-10,11 AND 12

1. MODIFY / EXTEND EXISTING CONDUITS AS REQUIRED TO CONNECT TO NEW TRANSFER SWITCH. ANY CONDUIT EXTENSIONS SHALL MATCH THE SIZE OF THE EXISTING CONDUIT BEING EXTENDED.
2. AT CONTRACTOR'S OPTION, CONDUITS MAY BE EXTENDED OR PULL BOXES INSTALLED AND NEW CONDUIT PROVIDED FROM PULL BOX TO NEW TRANSFER SWITCH. CONDUIT SIZES SHALL MATCH EXISTING.
3. NEW 3/4" CONDUIT FOR CONTROL WIRING.
4. AT CONTRACTOR'S OPTION, CONDUIT MAY BE EXTENDED OR PULL BOXES INSTALLED AS INDICATED.
5. NEW 1" CONDUIT FOR CONTROL WIRING.
6. INSTALL PULL BOX ON EXISTING 3" CONDUIT FROM EXTERIOR GENERATOR THROUGH EXTERIOR WALL TO EXISTING TRANSFER SWITCH AND EXTEND 3" CONDUIT FROM PULL BOX TO NEW ATS-1. PROVIDE 4 #300 KCMIL AND #2 GND IN CONDUIT FROM GENERATOR TO TRANSFER SWITCH.
7. EXISTING 1/2" CONDUIT FOR GENERATOR CONTROL WIRING FROM EXTERIOR GENERATOR TO EXISTING ATS. EXTEND TO NEW TRANSFER SWITCH AND PROVIDE NEW CONTROL AND MONITOR WIRING AS REQUIRED FROM GENERATOR TO ATS.
8. REMOVE EXISTING CONTROL/MONITORING CONDUCTORS AND INSTALL NEW TO MATCH EXISTING IN EXISTING CONDUIT AND RECONNECT.
9. GENERATOR CONTROL AND MONITORING WIRING TO GENERATOR CONTROL PANEL IN GENERATOR BUILDING 157. CONDUIT LENGTH IS APPROXIMATELY 225 FT.
10. INSTALL SPLICE BOX ON EXISTING CONDUIT FROM EXISTING TRANSFER SWITCH TO UNKNOWN LOAD. SPLICE EXISTING CONDUCTORS AND EXTEND TO NEW TRANSFER SWITCH.
11. EXISTING CONTROL AND MONITOR CONDUIT AND WIRE. EXTEND TO NEW TRANSFER SWITCH.

NOTES:
1. SEE DWG. ES 1, GENERAL NOTE 1, FOR THE PORTABLE GENERATOR REQUIREMENTS FOR EMERGENCY POWER FOR THE AUTOMATIC TRANSFER SWITCHES ASSOCIATED WITH BUILDING NO. 4

NOTES:
1. SEE DWG. ES 1, GENERAL NOTE 1, FOR THE PORTABLE GENERATOR REQUIREMENTS FOR EMERGENCY POWER FOR THE AUTOMATIC TRANSFER SWITCHES ASSOCIATED WITH BUILDING NO. 4.

				<div><div><div>COMMONWEALTH OF VIRGINIA</div><div>NEAL A. CRAMER</div><div>Lic. No. 411825</div><div></div><div>Comm. No.: 10135</div></div><div><div>Lawrence Perry & Associates, Inc.</div><div>Mechanical and Electrical Engineers</div><div></div><div>15 E. Salem Avenue SE, Suite 101 Roanoke, Virginia 24011</div><div>Ph: (540) 342-1816 Fax: (540) 344-3410</div><div>©2012 Lawrence Perry and Associates, Inc.</div></div></div>		APPROVED: Energy Engineer		APPROVED: Safety Manager		APPROVED: Service Chief		DRAWING TITLE PARTIAL EMERGENCY POWER RISER DIAGRAMS		PROJECT TITLE UPGRADE ELECTRICAL SYSTEM (REPLACE ATS)		DATE 02-17-12		Veterans Affairs
						APPROVED: Infection Control Officer		APPROVED: Chief of Staff		APPROVED: Chief of Facility Management Svc.		BUILDING NUMBER 1, 2, 2A, 4, & 154		CHECKED NAC	DRAWN WDC/RGW	PROJECT NO. 658-12-106		
						APPROVED: GEMS Coordinator		APPROVED: Associate Director		APPROVED: Medical Center Director		DRAWING NO. ES 10						
												LOCATION V.A.M.C. SALEM, VA. 24153		DWG. 11 OF 13				
REVISIONS				BY	DATE													



Lawrence Perry & Associates, Inc.
Mechanical and Electrical Engineers
15 E. Salem Avenue SE, Suite 101 Roanoke, Virginia 24011
Ph: (540) 342-1816 Fax: (540) 344-3410
Comm. No.: 10735
©2012 Lawrence Perry and Associates, Inc.