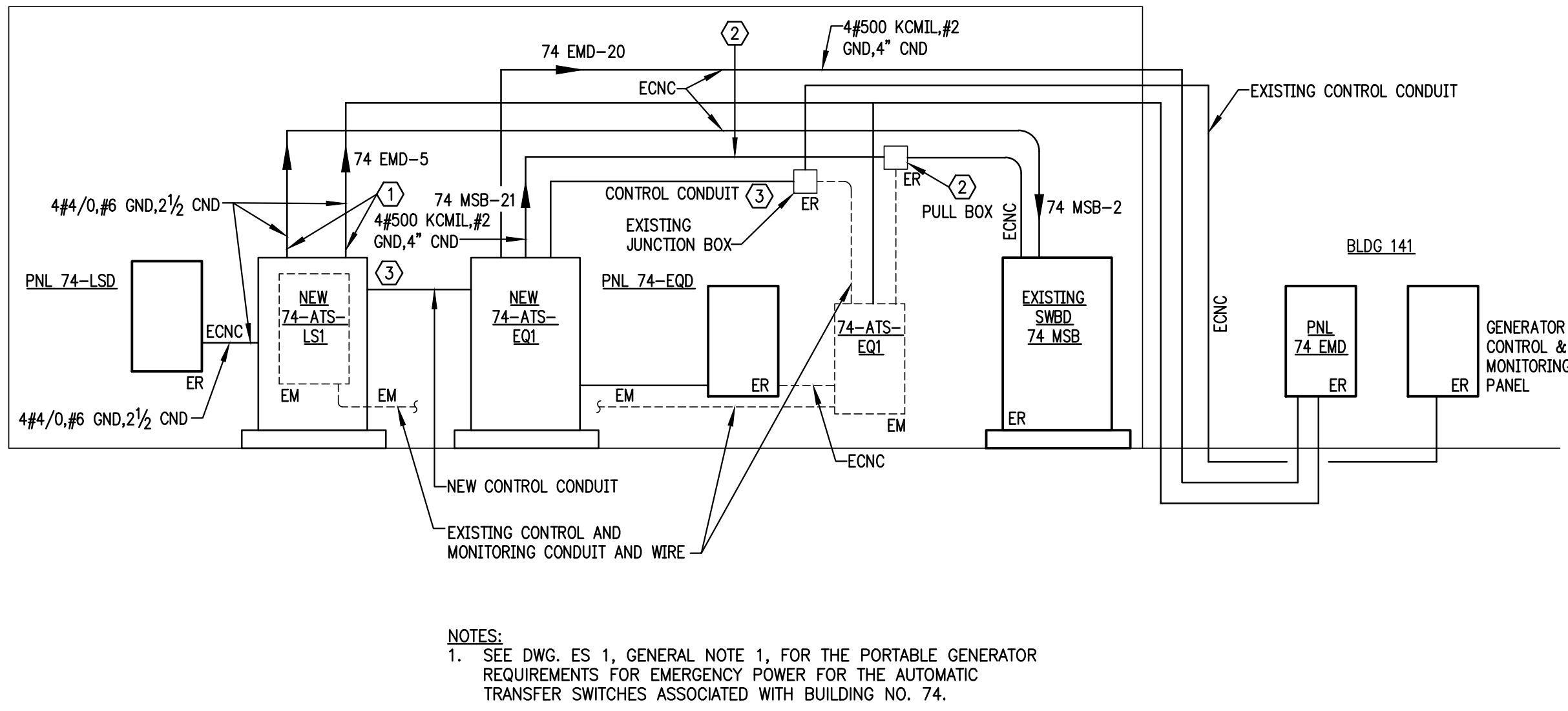
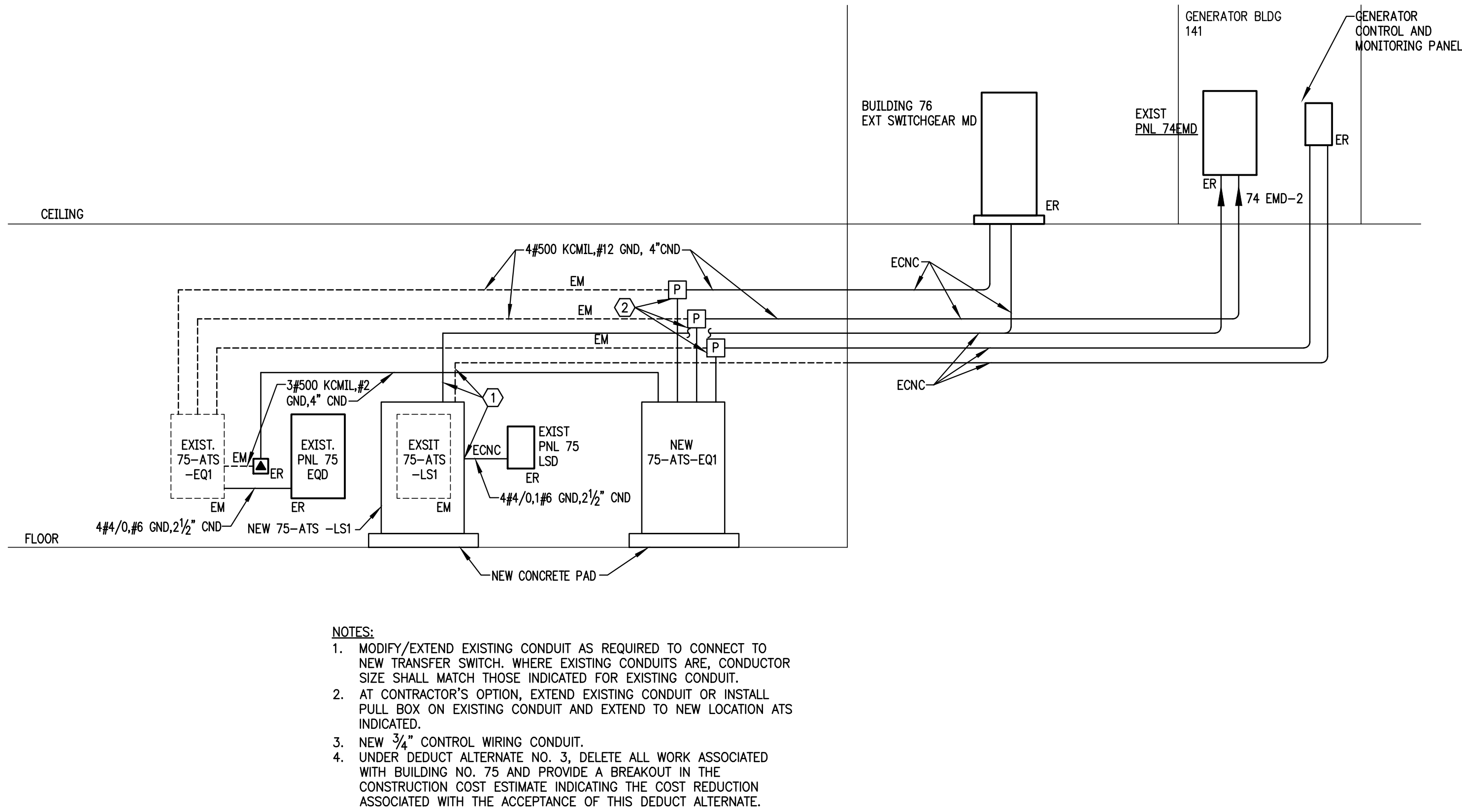


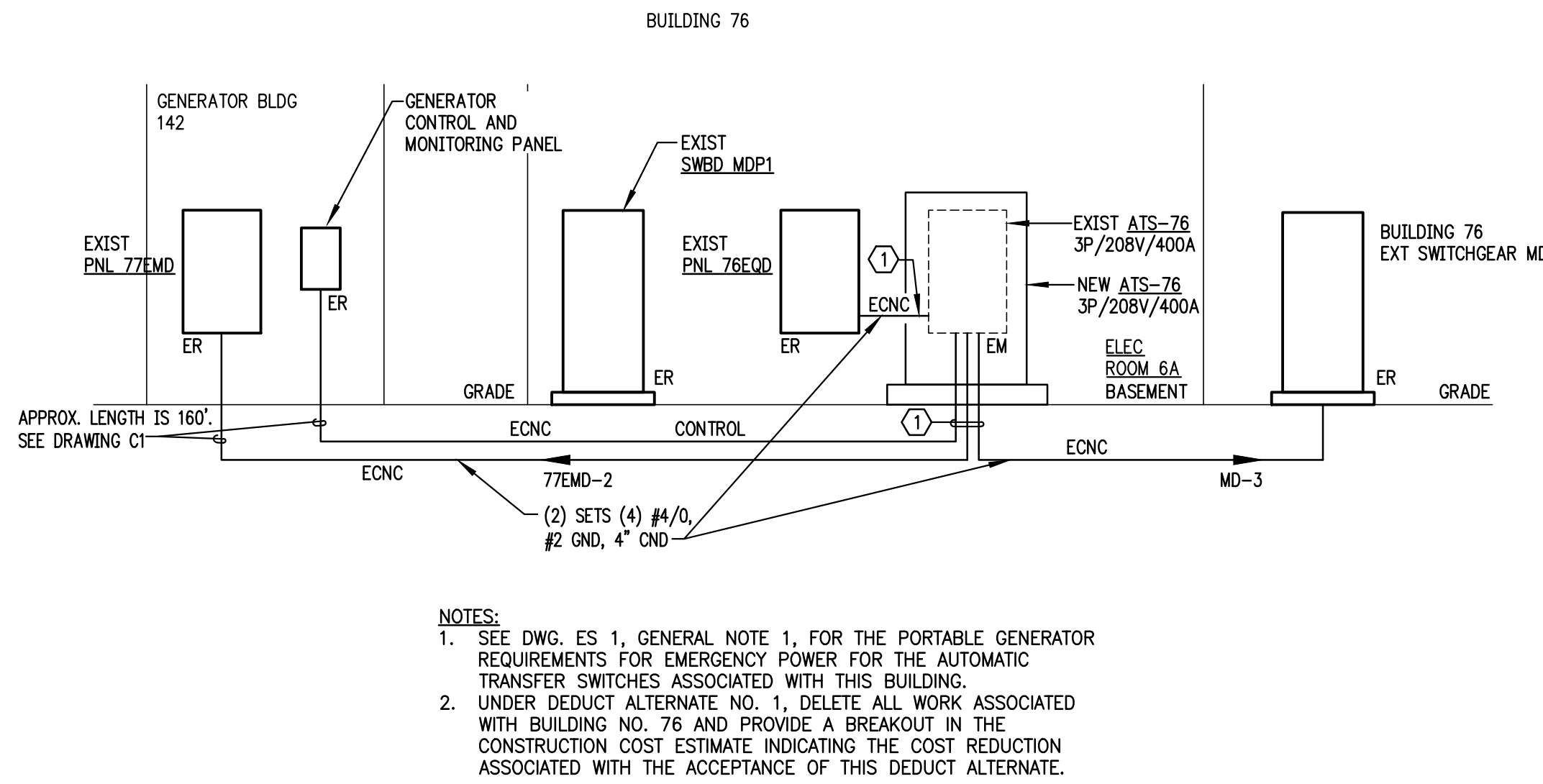
three inches = one foot
one and one-half inches = one foot
one inch = one foot
three-quarters inch = one foot
one-half inch = one foot
three-eighths inch = one foot
one-quarter inch = one foot
one-eighth inch = one foot



PARTIAL EMER POWER RISER DIAGRAM – BLDG. 74
SCHEMATIC

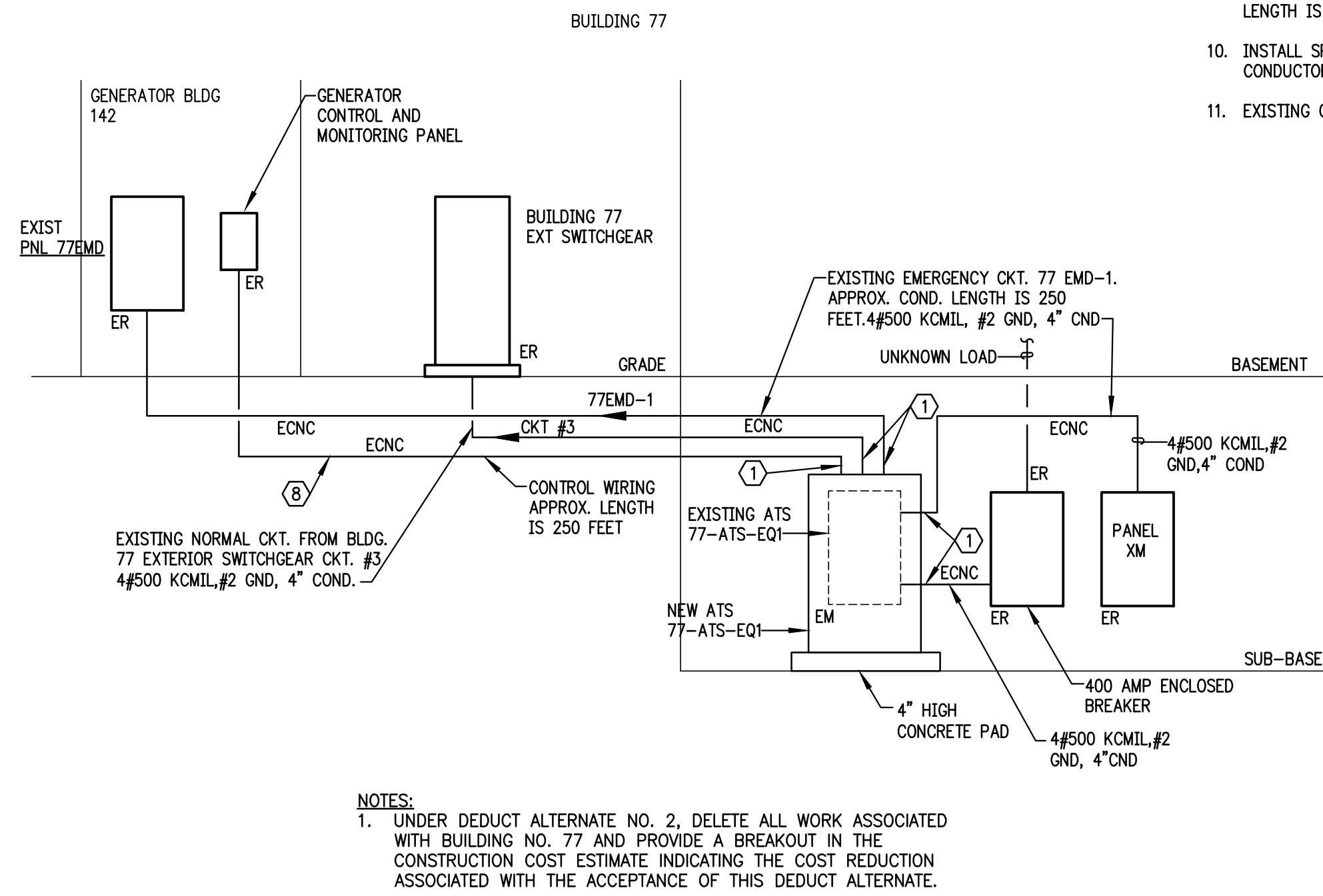


PARTIAL EMER POWER RISER DIAGRAM – BLDG. 75
SCHEMATIC

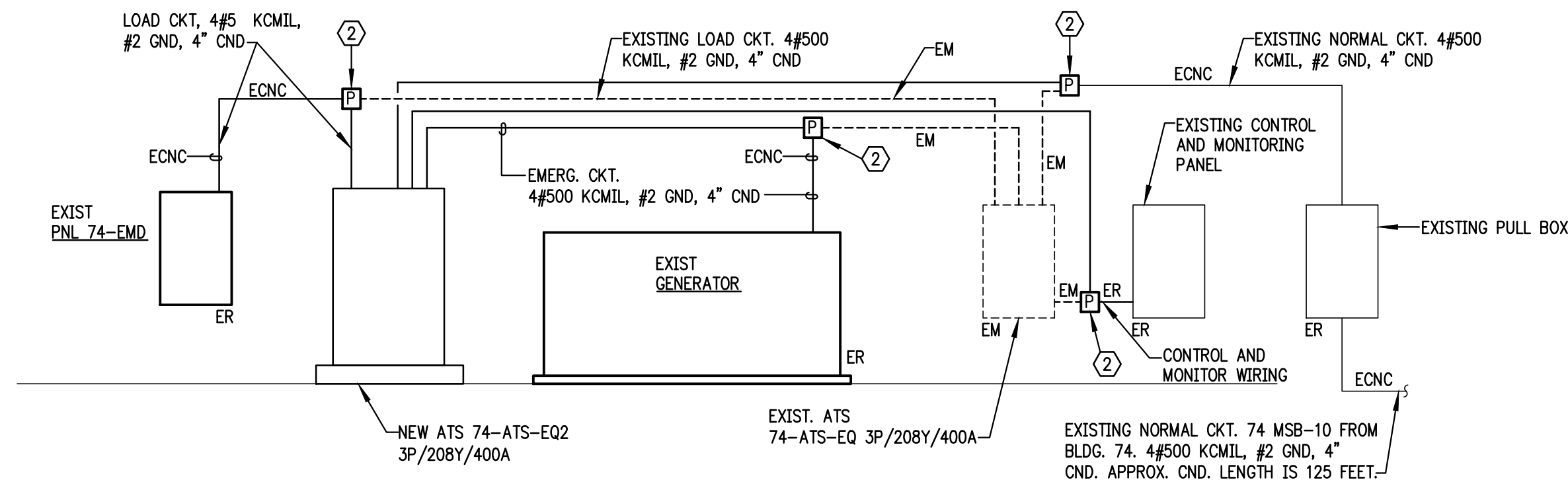


PARTIAL EMER POWER RISER DIAGRAM – BLDG. 76
SCHEMATIC


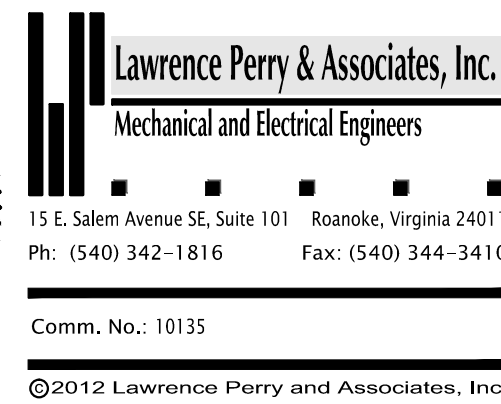
- PLAN NOTES FOR RISER DIAGRAM SHEETS ES-10,11 AND 12
- MODIFY / EXTEND EXISTING CONDUITS AS REQUIRED TO CONNECT TO NEW TRANSFER SWITCH. ANY CONDUIT EXTENSIONS SHALL MATCH THE SIZE OF THE EXISTING CONDUIT BEING EXTENDED.
 - AT CONTRACTOR'S OPTION, CONDUITS MAY BE EXTENDED OR PULL BOXES INSTALLED AND NEW CONDUIT PROVIDED FROM PULL BOX TO NEW TRANSFER SWITCH. CONDUIT SIZES SHALL MATCH EXISTING.
 - NEW 3/4\"/>



PARTIAL EMER POWER RISER DIAGRAM – BLDG. 77
SCHEMATIC



PARTIAL EMER POWER RISER DIAGRAM – GENERATOR BLDG. 141
SCHEMATIC

									APPROVED: Energy Engineer			APPROVED: Safety Manager			APPROVED: Service Chief			DRAWING TITLE PARTIAL EMERGENCY POWER RISER DIAGRAMS			PROJECT TITLE UPGRADE ELECTRICAL SYSTEM (REPLACE ATS)			DATE 02-17-12			Veterans Affairs					
												APPROVED: Infection Control Officer			APPROVED: Chief of Staff			APPROVED: Chief of Facility Management Svc.			BUILDING NUMBER 74, 75, 76, 77 & 141			CHECKED NAC		DRAWN WDC/RGW		DRAWING NO. 658-12-106				
												APPROVED: GEMS Coordinator			APPROVED: Associate Director			APPROVED: Medical Center Director			LOCATION V.A.M.C. SALEM, VA. 24153			DRAWING NO. ES 12				DWG. 13 OF 13				
REVISIONS			BY			DATE																										