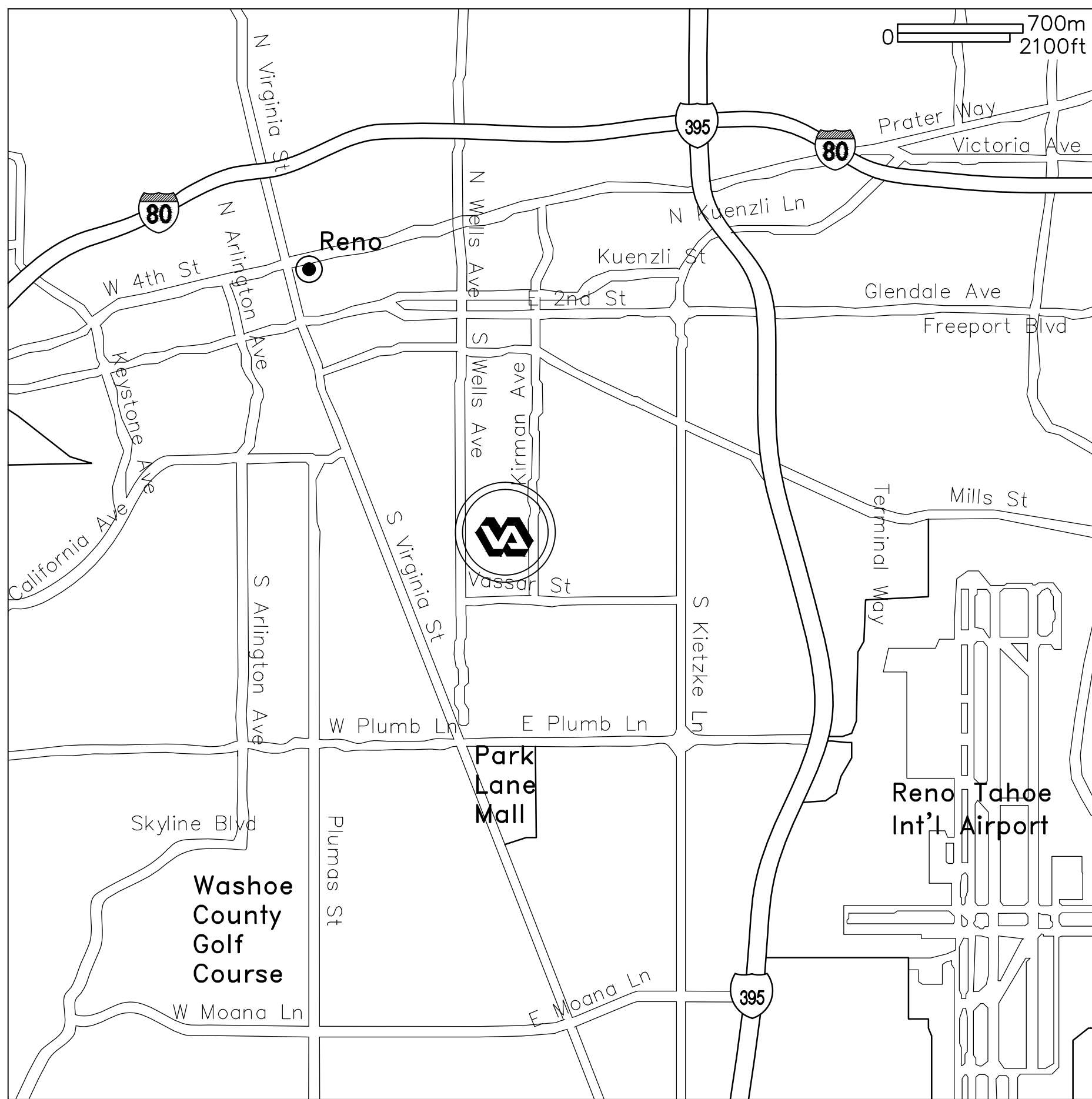


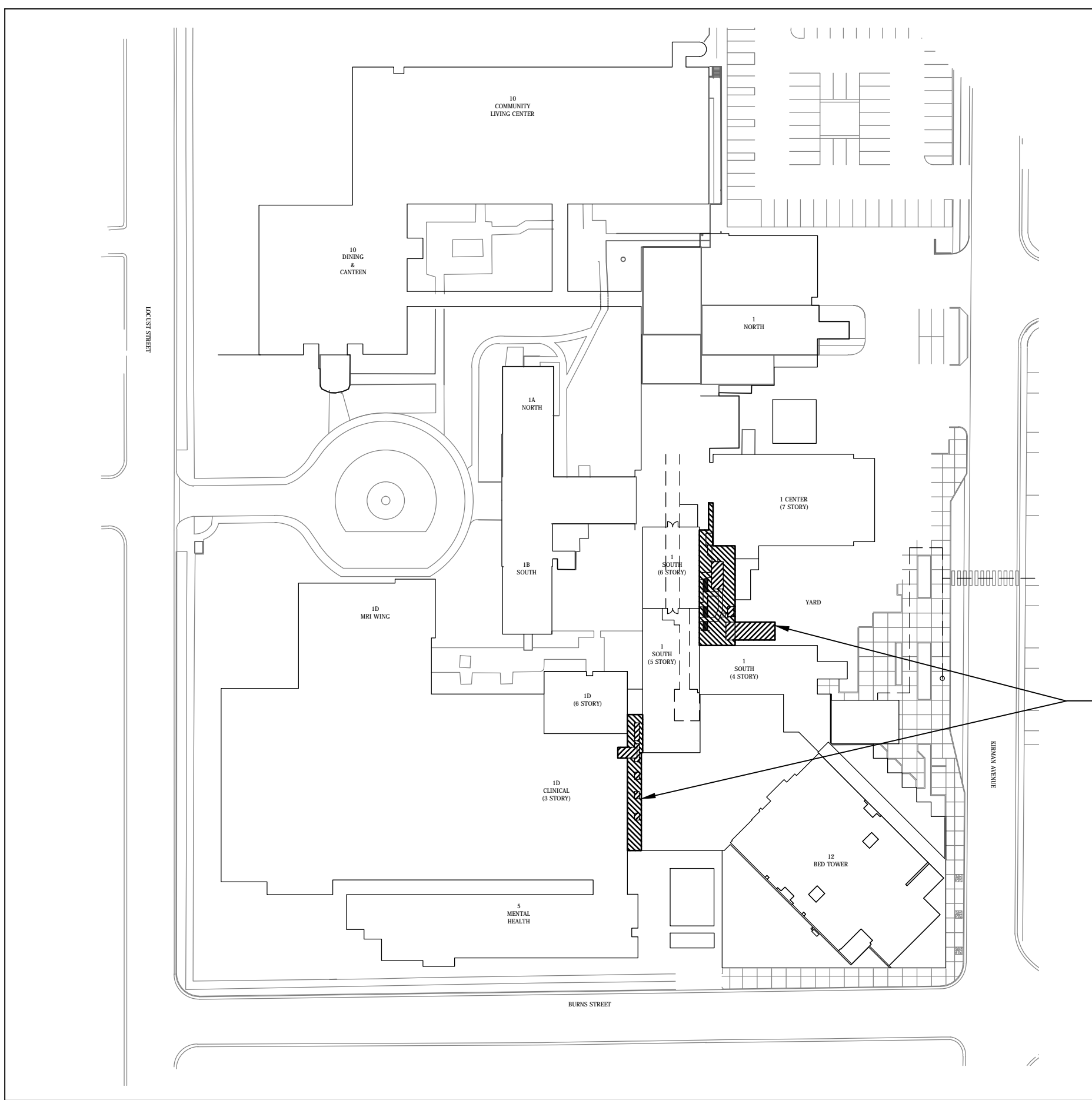
three inches = one foot  
one and one half inches = one foot  
one inch = one foot  
three quarters inch = one foot  
one half inch = one foot  
three eighths inch = one foot  
one quarter inch = one foot  
one eighth inch = one foot



DEPARTMENT OF VETERANS AFFAIRS  
HEALTH CARE SYSTEM  
PROJECT #654-15-560  
BUILDING 1 AND 1D  
BIRD REJECTION  
V. A. SIERRA NEVADA  
HEALTH CARE SYSTEM  
RENO, NEVADA



VICINITY MAP  
SCALE: NONE



PROJECT  
LOCATIONS

SITE MAP  
SCALE: NONE



NOTE:  
NO CONTRACTOR PERSONAL OR COMPANY VEHICLES ARE TO PARK ON VA  
PROPERTY.--VIOLATORS WILL BE TICKETED AND FINED

SCOPE OF WORK

THE SCOPE OF WORK INCLUDES BUT IS NOT LIMITED TO, ALL THE LABOR, MATERIALS, EQUIPMENT, TEMPORARY SCAFFOLDING, FALL PROTECTION, SAFETY MEASURES, PERMITS AND FEES ASSOCIATED WITH THE CLEANUP, WASHING, REMOVAL, DECONTAMINATION, AND DISPOSAL OF BIRD DROPPINGS AND BIRD MATTER IN THE AREAS INDICATED ON THE DRAWINGS. ALSO INCLUDED IS THE INSTALLATION OF AN ULTRASONIC SOUND SYSTEM TO DETER BIRD HABITATION FROM THE AREAS INDICATED ON THE DRAWINGS

DRAWING INDEX

SHEET NO.	SHEET TITLES
G1100	TITLE SHEET
G1200	GENERAL PROJECT NOTES
AS101	ARCHITECTURAL SYMBOLS AND ABBREVIATIONS
AS201	BIRD DROPPING REMOVAL, CLEANING AND DECONTAMINATION PLAN
AS301	BIRD REJECTION PLAN
AS401	DETAILS
EP101	GENERAL NOTES, LEGEND AND ABBREVIATIONS
EP301	ELECTRICAL POWER PLAN

FINAL STAMPED SUBMITTAL

Revisions:	Date	CONSULTANTS:	ARCHITECT/ENGINEERS:	Drawing Title	Project Title	Project Number	Office of Construction and Facilities Management
			K F DAVIS ENGINEERING, INC. 530 LA GONDA WAY, SUITE E, DANVILLE, CA. 94526 WWW.KFDE.COM (925) 743-8884	TITLE SHEET	BUILDING 1 AND 1D BIRD REJECTION	654-15-560	Department of Veterans Affairs
					Location	Building Number	
					VA HEALTHCARE CENTER RENO, NEVADA	BLDG 1 AND 1D	
					Date	Drawing Number	
					07/15/2016	G1100	
					Checked	Drawn	
					JA	RMK/MSA	
						Dwg. 1 of 8	



one eighth inch = one foot  
0 4 8 16

one quarter inch = one foot  
0 4 8

three eighths inch = one foot  
0 4

one half inch = one foot  
0 4

three quarters inch = one foot  
0 2 4

one inch = one foot  
0 6"

one and one half inches = one foot  
0 6"

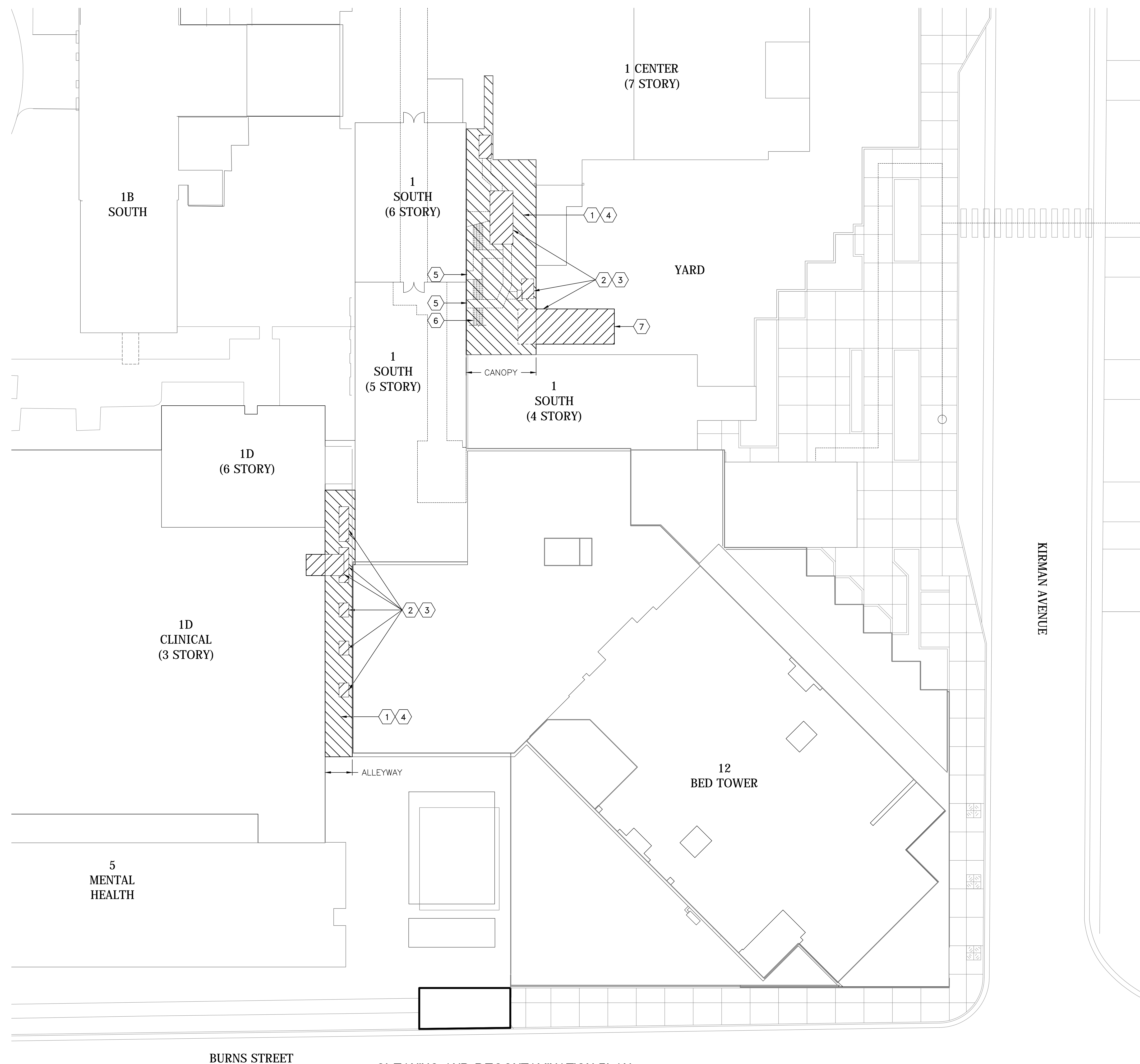
two inches = one foot  
0 2

three inches = one foot  
0 6"

	CENTER LINE
	ELEVATION INDICATOR
	CENTER LINE INDICATOR
	CONTRACT LIMIT LINE
	DEMOLITION LINE
	EXISTING TO REMAIN LINE
	FEATURES ABOVE LINE INDICATOR
	FIRE RESISTIVE RATED LINE, 1 HOUR
	FIRE RESISTIVE RATED LINE, 2 HOUR
	FIRE-RATED, SMOKE BARRIER LINE, 1 HOUR
	FIRE-RATED, SMOKE BARRIER LINE, 2 HOUR
	HIDDEN FEATURES LINE
	NEW LINE
	PROPERTY LINE
	BREAK, ROUND (USER DEFINES SIZE)
	BREAK, STRAIGHT (SEE SECTION INDICATORS, BUILDING, WITH BREAK STANDARDS)
	DETAIL INDICATOR
	DETAIL INDICATOR
	DETAIL INDICATOR FOR SMALL CONDITIONS
DETAIL NUMBER SHEET WHERE DRAWN	DETAIL INDICATOR
	FURNITURE, FIXTURE, & EQUIPMENT INDICATOR
	DIMENSION LINE
	SIGNAGE TAG
	WINDOW/LOUVER TAG
	DOOR NUMBER
	DOUBLE SWINGING DOOR
	ELEVATION INDICATOR, EXTERIOR
	ELEVATION INDICATOR, INTERIOR, MULTIPLE VIEW
	ELEVATION INDICATOR, INTERIOR, SINGLE VIEW
	BUILDING SECTION INDICATOR
	GRAPHIC SCALE, $\frac{1}{8}$ "=1'-0"
	ROOM NAME AND NUMBER
	COLUMN GRID
	KEYNOTE
	NORTH ARROW
	V V ITEM – VA SUPPLIED & INSTALLED
	VC ITEM – VA SUPPLIED & CONTRACTOR INSTALLED
	CC ITEM – CONTRACTOR SUPPLIED & INSTALLED
	ALIGN (N) FINISH W/ (E) FINISH

&	DBL	double	ID	inside diameter	R	riser
∠	DEM	demolish	INCL	include (d)(ing)	RAD	radius
⊙		demolition	INSUL	insulate (d)(ion)	RC	roof beam
>	DET	detail	INT	interior	RC	resilient channel
> greater than	DI	douglas fir	INV	invert	RD	roof drain
< less than	DH	double hung			RWD	redwood
∥	DP	diameter	JB	junction box	RF	reinforce (d)(ing)
P	DIA	diagonal	JST	joist	REC	receiving
⌀	DIM	diameter	JT	joint	REF	refrigerator
∅		dimension			REM	removing
∅		division	LAC	lag bolt	REQ	require
1FB	DL	dead load	LAM	lamin	RET	retained
2FB	DN	down	LAV	lavatory	REV	revision(s), revised
	DO	ditto	LAFW	Laminar Airflow	RM	room
A.B.	DS	downspout		Work bench	RO	rough opening
A/C	DSW	dishwasher			ROS	rough sawn
AC	DWG	drawing	LBS	pounds	RS	resawn
AD		area drain	LL	live load	RWL	rain waterleader
ADD	(E)	existing	LT	light		
A.F.F	EA	each face	MAS	masonry	S	skylight
	EJ	each joint	MAX	maximum	SAB	sound attenuation blanket
AGG	EF	expansion joint	MB	machine bolt	SC	solid core
ALUM	ELV	elevation	MC	medicine cabinet	SCD	see civil drawings
ALT	ELEC	electrical (a)	MECH	mechanical (a)	SCH	schedule
ANC	ANCR	anchor	ME	medium	SD	smoke detector
ANOD	ENGR	engineer	MFRG	manufacture (er)	SD	storm drain
APPROX	EQ	equal			SECT	section
ARCH	EST	estimate	MIN	minimum	SEL	select
ASB	ETC	et cetera	MISC	miscellaneous	SGD	sliding glass door
ATC	EXP	expansion	M-LAM	microlam	SHG	sheathing
AUTO	EXT	exterior	SM	similar	SIL	simul
AVE	EW	each way	MUL	mullion	SKL	skylight
AVG					S & P	she'll & pole
BARI	FB	floor beam	(N)	new	SMD	see mechanical drawings
BD	FD	floor drain	N	north	SPEC	specification (s)
BEI	FE	fire extinguisher	NA	not applicable	SPD	supply/processing/ distribution
BET	FG	fixed glass	NIC	not in contract	SQ	square
BITUM	FH	finished floor	NFPA	national fire	S.S.	stainless steel
BLDG	FHW	full height wall		protection association	ST	street
BLDG	FHP	full height partition	N	number	STR	see structural drawings
BLDG	FX	fix (ed)	NOM	nominal	STL	steel
BLDG	FLASH	flash	NRC	noise reduction	STL	storage
BM	FLX	flexible		coefficient	STRUCT	structural
BOT	FLUR	fluorescent	NTS	not to scale	SUSP	suspended
BS	FLR	floor (ing)	O	over	SY	symmetry (ical)
BSMI	FNDR	foundation	OA	overall	T	trim
EW	FOC	face of concrete	OAE	or approved equal	T&B	top & bottom
	FOF	face of finish	OBS	obscure	TC	trash compartment
CAB	FOM	face of masonry	OC	on center (s)	TELE	telephone
CAB	FOS	face of studs	OD	outside diameter	TEMP	temperered
CC	FW	face of wall	OP	operating room	TO	top of
CC	FT	fire protection	OP	opposite hand	TOC	top of concrete
Contractor furnished	FF	foot or feet	OP	opposite hand	TOC	top of deck
CIP	FTG	footing	OP	opposite	TOC	top of grade
cast in place	FTG	fire treated plywood	OSHA	occupational safety and health administration	TOP	top of parapet
CIPG	FURR	gutter			TP	top plate
CIR	G	gauge, gauge	PANA	panoramic ray	T&G	tongue and groove
CIRC	GALV	galvanized	PAR	parallel	THK	thick (ness)
CJ	GC	general contract (or)	PCB	polychlorinated biphenyl	TL	true slip "T" series
CJT	GI	galvanized iron	PCF	pounds per cubic foot	TP	thermoelastic polyolefin
CLO	GLZ	glazing	PER	pedestal	TW	top of wall
CLG	GRD	ground	PERP	perpendicular	TV	television
CLG ceiling	GSM	galvanized sheet metal	PERF	perforate (d)	TY	typical
CLF	GSB	gypsum wall board	P	plastic	UL	Underwriters laboratory
CMU	GY	gypsum	P-LAM	plastic laminate	UNO	unless noted otherwise
CMU contracting officer	HB	hose bibb	PLF	pounds per	VB	valley beam
COL	HC	hollow core	PLF	finished foot	VC	vent
COMP	HD	heavy duty	PLYWD	plywood	V	V
CONN	HDR	handicapped	PR	par	V	V
CONC	HW	hardware	PSF	pounds per square foot	V	V
CONC	HW	hardwood	PSI	pounds per square inch	V	V
CONC	HO	hollow metal	PT	pressure treated	V	V
CONC	HOR	horizontal	PVC	polyvinyl chloride	V	V
CORR	HZ	hour			V	V
CORR	HT	height			V	V
CORR	HW	hot water			V	V
CORR	HVAC	heating, ventilation, air conditioning			V	V
CSMT					V	V
C					V	V





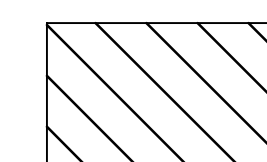
## GENERAL NOTES

1. THIS PROJECT INCLUDES THE REMOVAL OF EXISTING BIRD DROPPINGS AND OTHER BIRD MATTER AND THE CLEANING/WASHING/DECONTAMINATION IN AND AROUND THE AREAS SHOWN ON THE PLANS
2. CONTRACTOR SHALL PERFORM ALL WORK IN ACCORDANCE WITH APPLICABLE OSHA REGULATIONS TO PROTECT WORKERS, OCCUPANTS AND THE PUBLIC FROM EXPOSURE TO ANY HAZARDS.
3. ALL WORKERS SHALL BE TRAINED AND QUALIFIED PERSONNEL AND SHALL WEAR PROTECTIVE CLOTHING AND EQUIPMENT PER OSHA TITLE 29, PART 1910 SECTION 134 OF THE CODE OF FEDERAL REGULATIONS.
4. CONTRACTOR SHALL POST WARNING SIGNS TO KEEP UNAUTHORIZED INDIVIDUALS FROM ENTERING THE WORK AREA PER OSHA TITLE 29, PART 1910, SECTION 145 OF THE CODE OF FEDERAL REGULATIONS.
5. CONTRACTOR SHALL USE VACUUM CLEANERS WITH HEPA FILTERS; DISINFECTANTS AND SOLUTIONS; WETTED RAGS; AND THICK POLYETHYLENE DOUBLE BAGS TO SAFELY REMOVE DROPPINGS AND CLEAN DECONTAMINATE THE AREAS INDICATED WITHOUT DISPERSING BIRD MATTER TO ADJACENT AREAS.
6. COORDINATE WITH THE VA THE TEMPORARY SHUTDOWN OF BIRD ELECTRIC TRACKS AND OTHER HVAC EQUIPMENT ON A CASE BY CASE BASIS.
7. DO NOT CUT, PUNCTURE OR DAMAGE ROOFING. CONTRACTOR SHALL REPAIR ANY DAMAGE TO ROOFING SYSTEM AT NO EXTRA COST TO THE GOVERNMENT.
8. WORK OCCURS AT VARIOUS LEVELS WITHIN AND AROUND A MULTI-LEVEL HOSPITAL BUILDING. CONTRACTOR SHALL BECOME FAMILIAR WITH EACH AREA OF WORK BEFORE STARTING WORK. THIS INCLUDES KNOWING AND FOLLOWING VA RULES AND PROTOCOLS FOR DOING WORK WITHIN A HOSPITAL ENVIRONMENT.
9. CONTRACTOR SHALL NOT DISCHARGE ANY CONTAMINATED WATER OR BIRD DROPPINGS OR WATER INTO THE STORM WATER DRAINAGE SYSTEM.
10. CONTRACTOR SHALL PROTECT EXISTING STORMWATER SYSTEM AND SHALL FOLLOW WASHOE COUNTY STORMWATER REGULATIONS AT ALL TIMES.

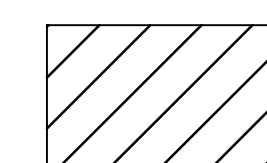
SHEET NOTES

- 1 REMOVE BIRD DROPPINGS AND BIRD MATTER FROM THIS AREA. CLEAN AND DECONTAMINATE ENTIRE ROOF/PAVED AREA AND ANY SURROUNDING BUILDING/WINDOW LEDGES AND EXTERIOR WALL SURFACES (AT ALL STORIES) SHOWING SIGNS OF BIRD DROPPINGS OR BIRD PRESENCE.
- 2 REMOVE BIRD DROPPINGS AND BIRD MATTER FROM ALL HVAC EQUIPMENT/ELECTRICAL EQUIPMENT/STORAGE UNITS AND MISC. DUCTS, PIPING AND CONDUITS.
- 3 CLEAN AND DECONTAMINATE ALL SURFACES OF EQUIPMENT, STORAGE CONTAINERS, DUCTS, PIPES AND CONDUITS. EXISTING BIRD CONTROL DEVICES TO REMAIN UNLESS OTHERWISE NOTED.
- 4 ALL EXISTING NETTING TO REMAIN
- 5 EXISTING DUCTS (VERIFY IN FIELD)
- 6 EXISTING PIPES (VERIFY IN FIELD)
- 7 STORAGE CONTAINER

SHEET NOTES



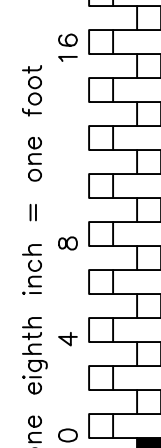
## CLEAN UP AND DECONTAMINATION



EQUIPMENT (NOT ALL SHOWN)  
CLEAN UP AND DECONTAMINATION

[illegible]





5  
AS401

**SPEAKER ELEVATION**  
3" = 1'-0"



 **BIRD SLOPE DETAIL @ BUILDING**  
 $3'' = 1'-0''$



4 BIRD SLOPE DETAIL @ HVAC DUCT  
AS401 3" = 1'-0"



Department of  
Veterans Affairs

three inches = one foot

one and one half inches = one foot

one inch = one foot

three quarters inch = one foot

three eighths inch = one foot

one half inch = one foot

one quarter inch = one foot

one eighth inch = one foot

LEGEND

CIRCUITING

CONDUIT OR WIRE RUN EXPOSED OR ABOVE THE CEILING

CONDUIT/WIRE TURN DOWN

CONDUIT/WIRE TURN UP

PHASE

CONDUCTOR

NEUTRAL

GROUND

A-1,3

BRANCH CIRCUIT HOMERUN TO PANELBOARD; LETTER AND NUMBER NOTATION IDENTIFIES PANEL AND CIRCUIT NUMBER(S). HASHMARKS INDICATES NUMBER OF PHASE, NEUTRAL AND GREEN GROUND WIRES

GRAY LINE OR THIN LINE INDICATES EXISTING EQUIPMENT AND CIRCUITS

BOLD THICK LINE INDICATES NEW WORK EQUIPMENT AND CIRCUITS

1

SHEET NOTE REFERENCE

1

EPXXX

DETAIL NUMBER

DRAWING NUMBER ON WHICH DETAIL IS DRAWN

POWER AND DISTRIBUTION

ELECTRICAL PANEL

RECEPTACLES

GFCI

WP

DUPLEX RECEPTACLE, NEMA 5-20R, GROUNDING TYPE WITH GROUND FAULT INTERRUPTER (GFCI) IN WEATHER PROTECTED NEMA 3-R ENCLOSURE

1. RECEPTACLE SUFFIX OF:  
GFCI- GROUND FAULT CIRCUIT INTERRUPTER  
WP - WEATHER PROTECTED (NEMA 3R) ENCLOSURE

PANELBOARD, SWITCHBOARD AND RELATED (CONT.)

ELECTRIC PANELBOARD, FLUSH MOUNTED

ELECTRIC PANELBOARD, SURFACE MOUNTED

INSTRUMENTATION

CONTROL UNIT

SPEAKER

ELECTRICAL ABBREVIATIONS:			
A/AMP	AMPERE	N/A	NOT APPLICABLE
AFF	ABOVE FINISHED FLOOR	NEC	NATIONAL ELECTRICAL CODE
ANSI	AMERICAN NATIONAL STANDARDS INSTITUTE	NEMA	NATIONAL ELECTRICAL MANUFACTURERS ASSOCIATION NUMBER
AWG	AMERICAN WIRE GAUGE	NO.	NOT TO SCALE
		NTS	
BLDG	BUILDING		
		O.L.	OVERLOAD
C	CONDUIT		
C.B.	CIRCUIT BREAKER		
CLG	CEILING	P	POLE
COTR/COR	CONTRACTING OFFICER TECHNICAL REPRESENTATIVE	PNL	PANEL
CKT	CIRCUIT	PH / Ø	PHASE
CU	COPPER	PWR	POWER
		RECEPT RGS RM	RECEPTACLE RIGID GALVANIZED STEEL ROOM
DWG	DRAWING		
ELECT	ELECTRIC	SCHED ST SW	SCHEDULE STREET SWITCH
ELEV	ELEVATION		
EQUIP	EQUIPMENT		
EXIST	EXISTING		
		TERM THRU	TERMINAL THROUGH
FT	FOOT, FEET	TWP	TWISTED WIRE PAIR, SHIELDED TYPICAL
FLR	FLOOR		
		UBC	UNIFORM BUILDING CODE
GALV	GALVANIZED	UL	UNDERWRITERS LABORATORIES
GFCI	GROUND FAULT CIRCUIT INTERRUPTER	UNK	UNKNOWN
GND	GROUND	UON	UNLESS OTHERWISE NOTED
GOV	GOVERNMENT		
GRN	GREEN		
		V	VOLT
HT	HEIGHT	VA	VOLT AMPS
Hz	HERTZ	VAMC	VETERANS AFFAIRS MEDICAL CENTER
J.B.	JUNCTION BOX		
		W	WIRE
		WP	WEATHERPROOF
LOC	LOCATION		
		XFMR	TRANSFORMER
MAX	MAXIMUM	+12"A.F.F.	MOUNTING HEIGHT ABOVE FINISHED FLOOR OR GRADE
MECH	MECHANICAL		
MIN	MINIMUM		
MISC	MISCELLANEOUS		
MTD	MOUNTED		
MTG	MOUNTING		

GENERAL NOTES

1. DRAWINGS SHOWN ARE SCHEMATIC ONLY. THE CONTRACTOR SHALL FIELD VERIFY SITE CONDITIONS AND ENSURE SHOP DRAWINGS ARE PROVIDED BEFORE DETAILING COMPLETE UTILITY LAYOUT AND INSTALLATION. IT SHALL BE THE CONTRACTORS RESPONSIBILITY TO ROUTE NEW CONDUITS, WIRES AND SIMILAR LINES TO AVOID POTENTIAL INTERFERENCES, AND WHERE THIS CANNOT BE ACCOMPLISHED, IT SHALL BE THE CONTRACTORS RESPONSIBILITY TO REMOVE, REROUTE, ADJUST AND REINSTALL THE INTERFERENCE SUCH THAT IT NO LONGER POSES A PROBLEM. THESE ITEMS ARE TO BE ADDRESSED AND CORRECTED AT NO ADDITIONAL COST TO THE GOVERNMENT.

2. THE CONTRACTOR SHALL PAY FOR AND OBTAIN ALL PERMITS, APPROVALS AND LICENSES REQUIRED FROM REGULATING AGENCIES BEFORE STARTING ANY WORK. ALL ASSOCIATED COSTS SHALL BE INCLUDED IN CONTRACTORS BID.

3. SAFETY: CONFORM TO APPLICABLE CONSTRUCTION SAFETY REGULATIONS FOR ALL WORK PERFORMED DURING CONSTRUCTION. JOB SITE SAFETY IS STRICTLY THE RESPONSIBILITY OF THE CONTRACTOR AND NOT THE ARCHITECT/ENGINEER OR THE GOVERNMENT.

4. METHODS AND MATERIALS SHALL BE IN ACCORDANCE WITH THE NATIONAL ELECTRIC CODE (NEC). EQUIPMENT SHALL BE IN ACCORDANCE WITH THE STANDARDS OF THE NATIONAL ELECTRIC MANUFACTURERS ASSOCIATION (NEMA) AND AMERICAN NATIONAL STANDARDS INSTITUTE (ANSI). EQUIPMENT SHALL BE NEW AND LISTED BY UNDERWRITERS LABORATORIES (U.L.) AND INSTALLED IN ACCORDANCE WITH THE CONDITIONS STATED IN THAT LISTINGS.

5. ALL MATERIAL SHALL CONFORM TO THE "BUY AMERICAN" ACT.

6. THE WORK INDICATED ON THESE DRAWINGS IS GENERALLY DIAGRAMMATIC AND IS INTENDED TO CONVEY THE SCOPE OF WORK AND INDICATE THE GENERAL ARRANGEMENT OF EQUIPMENT, CONDUIT AND WIRING, ETC.

7. THE CONTRACTOR IS RESPONSIBLE FOR CHECKING FIELD CONDITIONS, PRIOR TO COMMENCEMENT OF WORK AND REPORT ANY PROBLEMS/CONFLICTS TO THE CONTRACTING OFFICER WITHIN TWO (2) DAYS OF DISCOVERY. ANY CHANGES RESULTING FROM CONDITIONS ARISING IN THE FIELD WHICH ARE NOT BROUGHT TO THE ATTENTION OF THE CONTRACTING OFFICER ARE TO BE MADE BY CONTRACTOR AT NO ADDITIONAL COST TO THE GOVERNMENT.

8. ALL ELECTRICAL CONSTRUCTION WORK, METHODS AND MATERIALS SHALL BE IN COMPLIANCE WITH THE LATEST EDITION OF NATIONAL ELECTRICAL CODE (NEC) AND APPLICABLE GOVERNMENT AND VA RULES AND REGULATIONS.

9. CONTRACTOR SHALL IMMEDIATELY REPORT AND SUBMIT SAMPLE FOR ANY ENCOUNTERED UNKNOWN OR SUSPECTED HAZARDOUS MATERIAL TO THE CONTRACTING OFFICER FOR TESTING.

10. MANUFACTURERS TRADE NAME AND CATALOG NUMBERS HAVE BEEN PROVIDED TO ESTABLISH GENERAL APPEARANCE. PHYSICAL CHARACTERISTICS AND QUALITY AND UNLESS OTHERWISE INDICATED ARE NOT INTENDED TO BE RESTRICTIVE RELATIVE TO THE ACTUAL PRODUCT SELECTED BY THE CONTRACTOR. SUBSTITUTING OF EQUAL PERFORMANCE AND APPEARANCE MAY BE CONSIDERED AS ACCEPTABLE.

11. HAZARDOUS MATERIALS: UNLESS OTHERWISE PROVIDED, THE ARCHITECT/ENGINEER AND HIS/HER CONSULTANTS SHALL HAVE NO RESPONSIBILITY FOR THE DISCOVERY, PRESENCE HANDLING, REMOVAL OR DISPOSAL OF OR EXPOSURE TO HAZARDOUS MATERIAL IN ANY FORM AT THE PROJECT SITE, INCLUDING BUT NOT LIMITED TO ASBESTOS, ASBESTOS PRODUCTS, POLYCHLORINATE DIPPHENYL (PCB) OR OTHER TOXIC SUBSTANCES.

12. EQUIPMENT SHALL BE SUPPORTED/MOUNTED TO COMPLY WITH THE SEISMIC REQUIREMENTS OF THE IBC AND ASCE 7.

13. COORDINATE WORK WITH OTHER TRADES TO AVOID CONFLICTS.

14. THE CONTRACTOR OR HIS REPRESENTATIVE SHALL BE AT THE SITE TO SUPERVISE AND COORDINATE CONSTRUCTION AT ALL TIMES WORK IS IN PROGRESS.

15. BEFORE ENERGIZING, EQUIPMENT SHALL BE TESTED TO BE FREE OF GROUNDS AND SHORTS.

16. ANY OUTAGES WILL BE AT A TIME THAT IS LEAST DISRUPTIVE TO THE MEDICAL CENTER OR AS DIRECTED BY THE CONTRACTING OFFICER OR THE DESIGNATED REPRESENTATIVE . A WRITTEN REQUEST IS REQUIRED 15 DAYS BEFORE ACTUAL OUTAGE.

17. ALL WORK SHALL BE FREE OF DEFECTS IN WORKMANSHIP AND MATERIAL FOR A PERIOD OF ONE (1) YEAR FROM THE DATE OF FINAL ACCEPTANCE. ALL DEFECTS WHICH DEVELOPED OR ARE DISCOVERED WITHIN THIS TIME PERIOD SHALL BE REPAIRED BY THE CONTRACTOR TO THE SATISFACTION OF THE CONTRACTING OFFICER AT NO ADDITIONAL COST TO THE GOVERNMENT.

18. PENETRATION OF CONDUITS, RACEWAYS AND WIRING THROUGH FIRE-RATED WALLS AND CEILINGS SHALL BE FIRE-STOPPED. FIRE STOPPING MATERIALS AND METHODS SHALL BE AN UNDERWRITERS LABORATORIES (U.L.) LISTED ASSEMBLY.

19. ALL RECEPTACLES, OUTLETS AND JUNCTION BOXES (ABOVE AND BELOW CEILING) SHALL BE PERMANENTLY MARKED IN A MANNER APPROVED BY THE CONTRACTING OFFICER OR THE DESIGNATED REPRESENTATIVE TO INDICATE THE CIRCUIT NUMBER AND SOURCE PANELBOARD.

20. LABEL AND IDENTIFY ALL PANEL SCHEDULES.

21. UNLESS OTHERWISE INDICATED, CONDUCTORS SHALL BE TYPE THHN/THWN, 600 VOLT, SOLID OR STRANDED COPPER AND NOT SMALLER THAN #12 AWG FOR POWER AND LIGHTING CIRCUITS AND #14 AWG FOR CONTROL CIRCUITS.

22. EQUIPMENT GROUNDING IS REQUIRED. PROVIDE AN EQUIPMENT GROUNDING CONDUCTOR IN ALL NEW RACEWAYS; THE CONDUIT SHALL NOT SERVE AS THE ONLY GROUNDING MEANS.

23. "PROVIDE" MEANS "FURNISH AND INSTALL".

24. PATCH AND REPAIR SURFACE TO MATCH EXISTING WHEN DAMAGED DURING CONSTRUCTION.

25. CONTRACTOR SHALL PROTECT EQUIPMENT AND CONSTRUCTION ACTIVITIES FROM DAMAGE DUE TO RAIN, WIND, MOISTURE AND SIMILAR ELEMENTS.

CONSTRUCTION NOTES:

1. ALL CUTTING AND PATCHING REQUIRED FOR INSTALLATION OF RACEWAYS OR EQUIPMENT SHALL BE PERFORMED BY A TRADESMEN EXPERIENCED IN THE WORK REQUIRED. ALL FINISHES SHALL MATCH EXISTING ADJACENT SURFACES OR AS INDICATED ON ARCHITECTURAL DRAWINGS.

2. ALL ROOF OR WALL OPENINGS MADE DURING CONSTRUCTION UNDER THIS CONTRACT SHALL NOT BE LEFT UNPROTECTED FROM RAIN, MOISTURE, WIND, DUST AND ALL OUTSIDE ELEMENTS.

3. CONTRACTORS SHALL PATCH AND REPAIR ALL OPENINGS IN WALLS RESULTING FROM CONSTRUCTION OR RELATED WORK TO MATCH EXISTING ADJACENT SURROUNDINGS.

<div>Revisions:</div> <div>Date</div>	<div>CONSULTANTS:</div>	<div><div><div><div></div><div>REGISTERED PROFESSIONAL ENGINEER</div><div>E 17641</div><div>EXP 9-30-2017</div><div>OFFICE OF CALIFORNIA</div></div></div></div>	<div>ARCHITECT/ENGINEERS:</div> <div><div><div><div></div><div>K F DAVIS ENGINEERING, INC.</div><div>530 LA GONDA WAY, SUITE E,</div><div>DANVILLE, CA. 94526</div><div>WWW.KFDE.COM</div><div>(925) 743-8884</div></div></div></div>	<div>Drawing Title</div> <div>GENERAL NOTES, LEGEND AND ABBREVIATIONS</div>	<div>Project Title</div> <div>BUILDING 1 AND 1D BIRD REJECTION</div>	<div>Project Number</div> <div>654-15-560</div>	<div>Building Number</div> <div>BLDG 1 AND 1D</div>	<div>Drawing Number</div> <div>EP101</div>	<div>Dwg. 7 of 8</div>	<div>Office of Construction and Facilities Management</div> <div>Department of Veterans Affairs</div>
---------------------------------------	-------------------------	--	---	---	--	---	---	--	------------------------	---

VA FORM 08-6231

1

2

3

4

5

6

7

8

9



