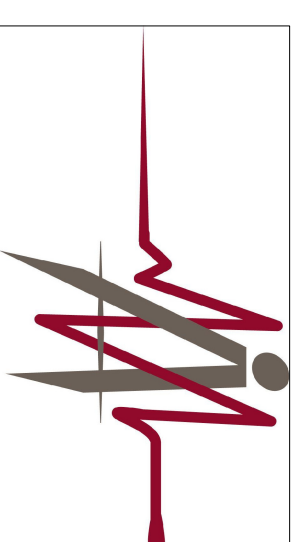
[illegible]

ARCHITECT/ENGINEERS:



**MEDICAL
ARCHITECT**

Medical Architecture & Interior Design
1401 South Denver, Ste C
Tulsa, Oklahoma 74119
Phone: 583.7600 Fax: 583.7604



ALLIED ENGINEERING GROUP, LLC
 MECHANICAL-ELECTRICAL-PLUMBING-CONSULTANTS
 1401 SOUTH DENVER STREET, SUITE A, TULSA, OK, 74119

APPROVED: Interior Designer

APPROVED: Safety Manager

APPROVED: Medical Center Director

DETAILS

[illegible]Project Number
623-10-110

Office of

APPROVED

APPROVED: Infection Control Nurse

APPROVED: Associate Director

Building Number

Construction

APPROVED

APPROVED: Industrial Hygienist

APPROVED: Chief of Staff

Location
JACK C. MONTGOMERY VA MED
1011 HONOR HEIGHTS DR

Drawing Number

Management

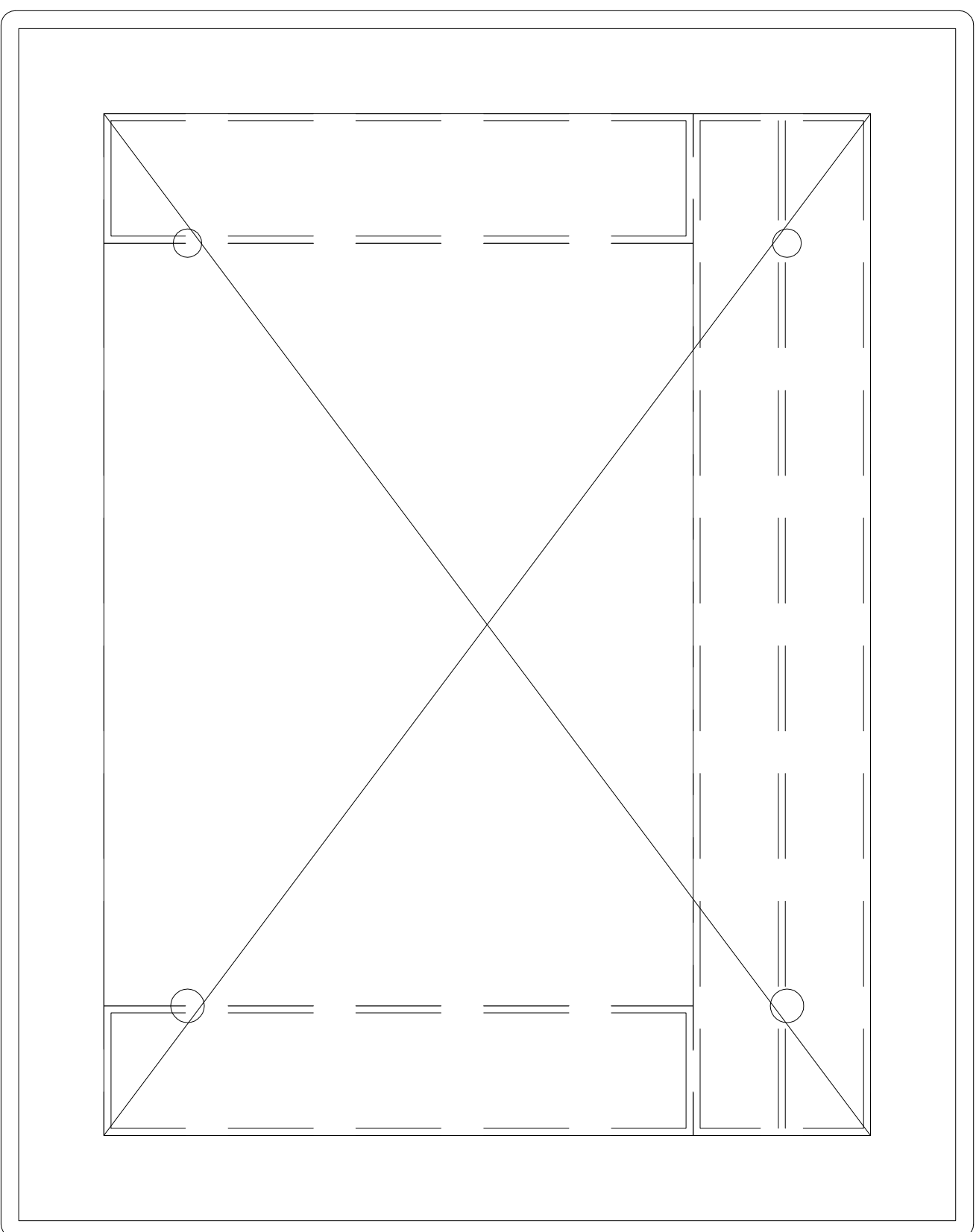
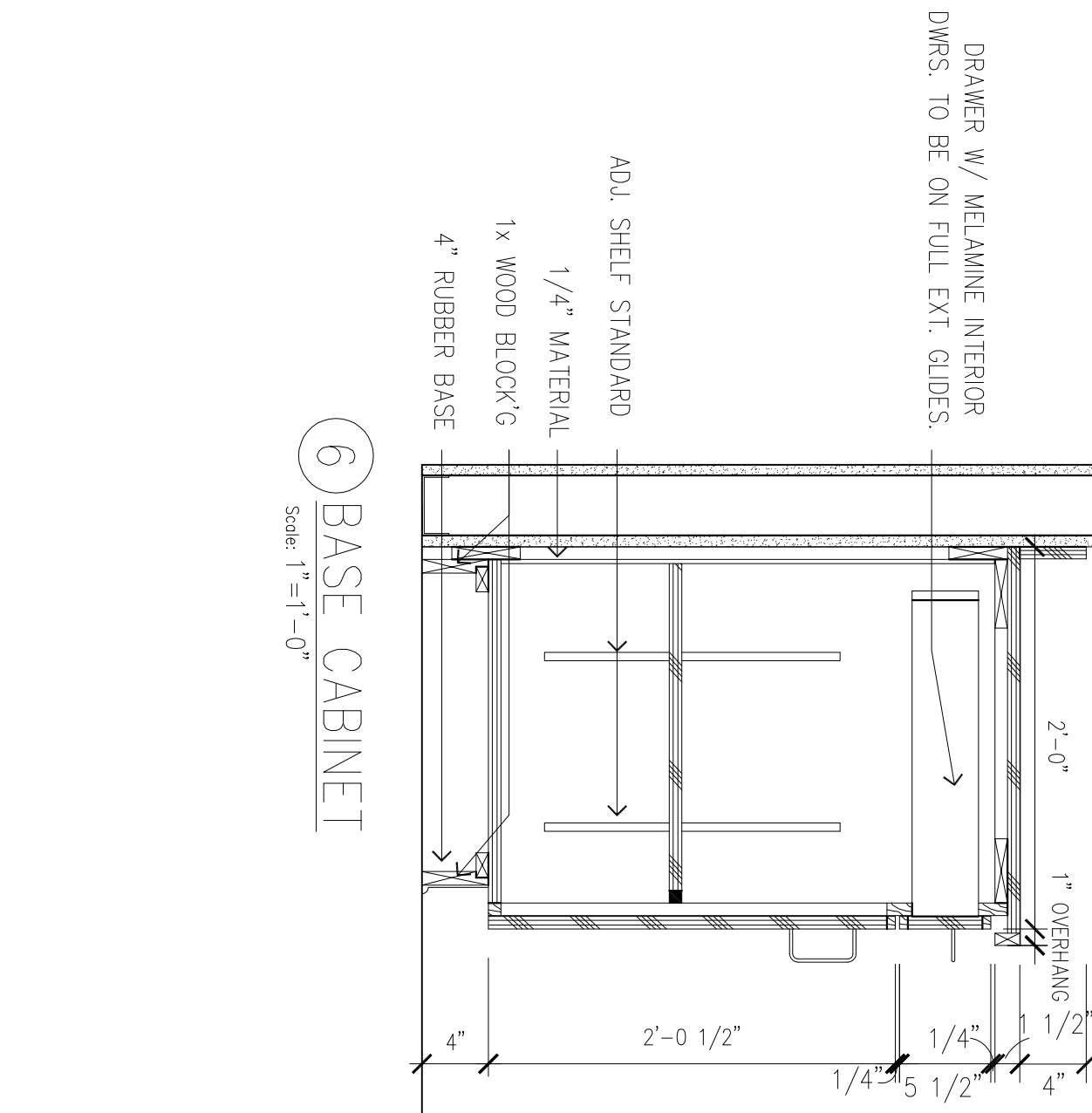
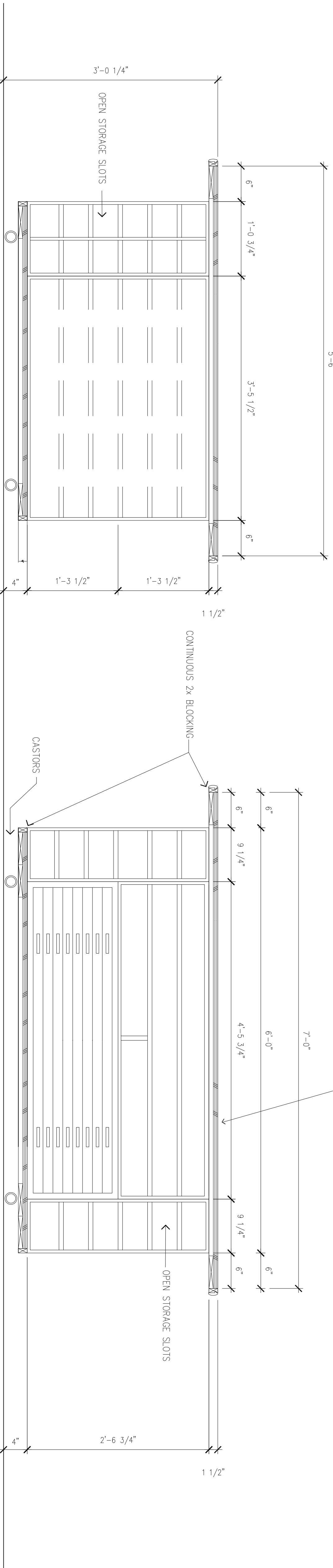
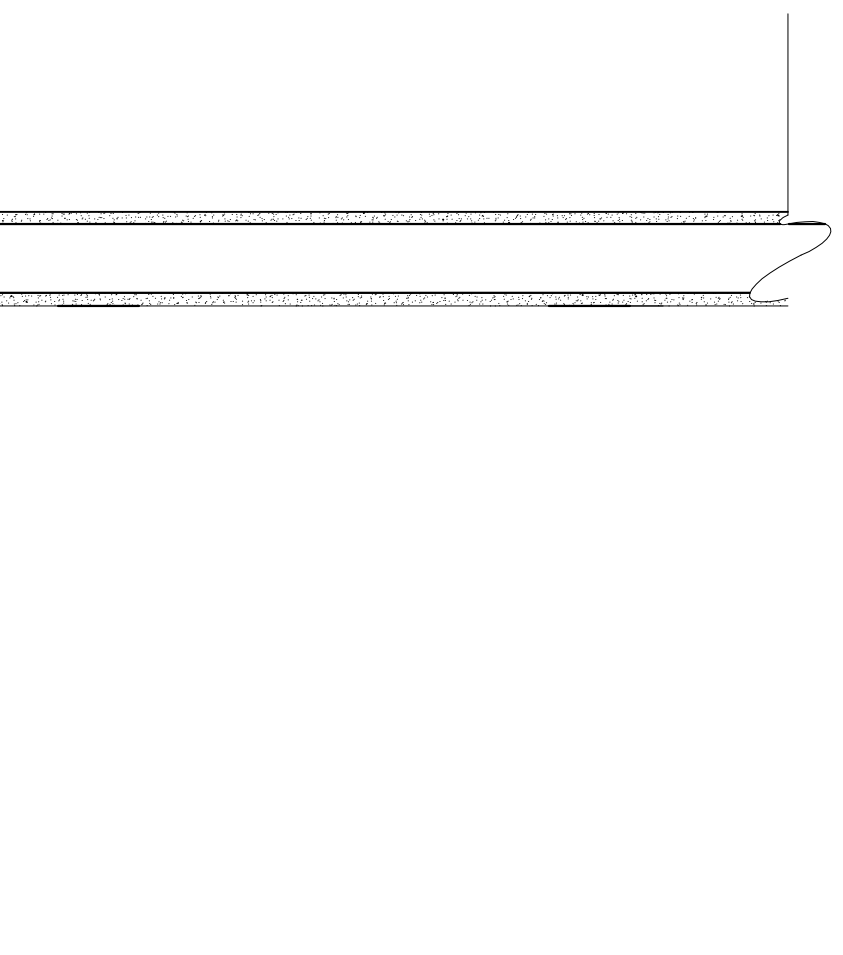
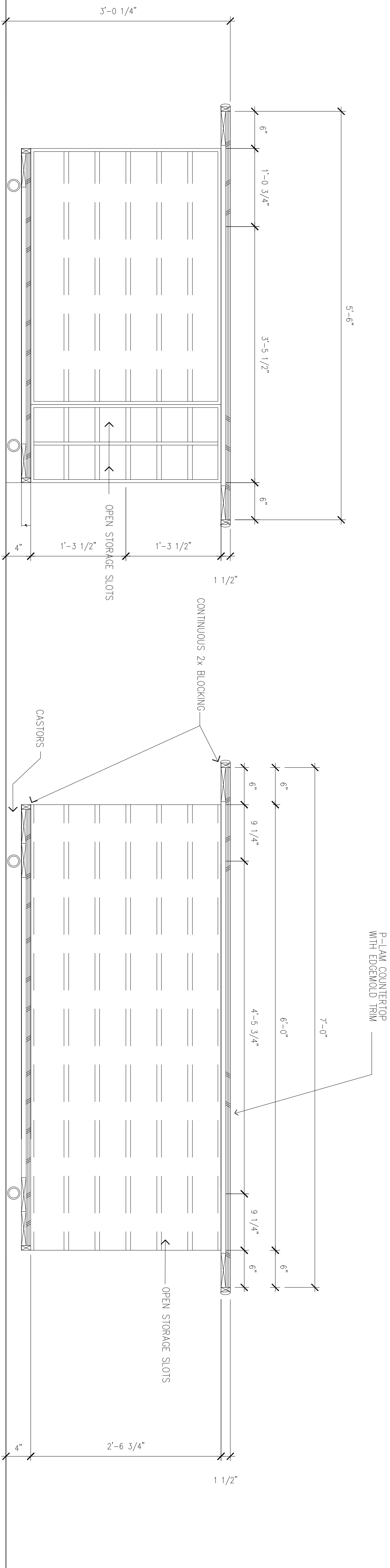
APPROVED

APPROVED: President A.F.G.E. 2250

APPROVED: Chief of Engineering Service

17 JAN 2012

2
 3
 4

Department of
Veterans Affairs

1. Construct Layout / Work Table to measurements as shown on details 1 thru 5.
2. Millwork shall consist of a mobile base with 4 cabinet components and a 66" x 84" work top which can be assembled around a metal flat file.
3. Metal Flat File Drawer Unit (provide by Owner) to be delivered to contractor prior to construction of millwork.
4. Platform Base / Dolly with Castors shall be constructed of materials, (wood and/or steel framing) capable of carrying a fully loaded Flat File and four open storage cabinets filled with roll and sheet paper stock.
5. Unit to be constructed in parts such that it can be disassembled for shipment and reassembled inside Media Room.
6. Construct base cabinet per detail # 6.
7. See Schedules for finishes.
8. Submit Shop Drawings for approval.