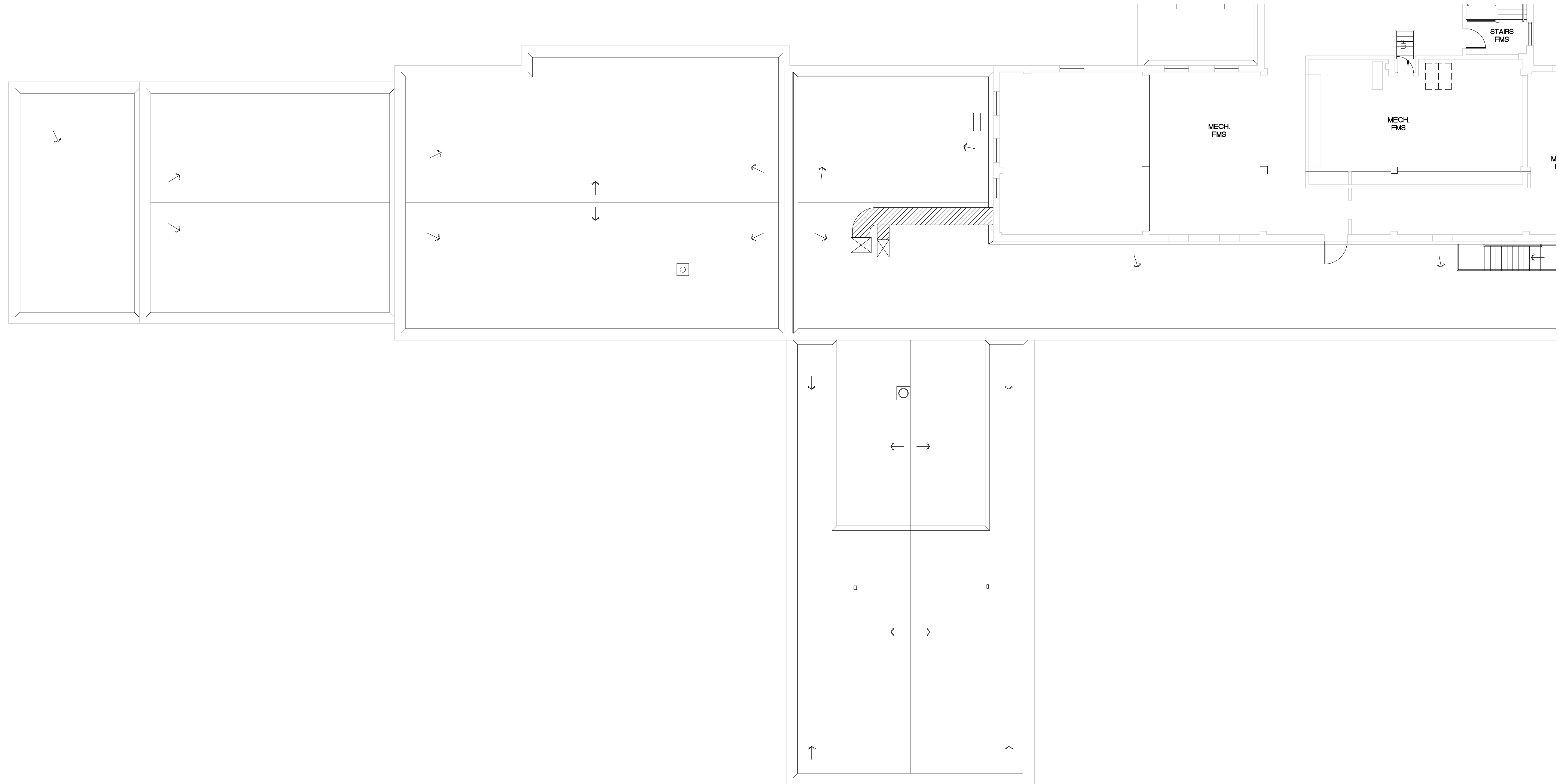


○ SYSTEMS DEMOLITION KEYED NOTES:
 GENERAL NOTES:
 1. NO WORK ANTICIPATED ON THE SIXTH LEVEL.

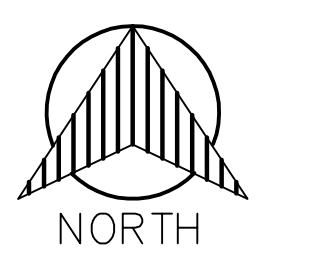
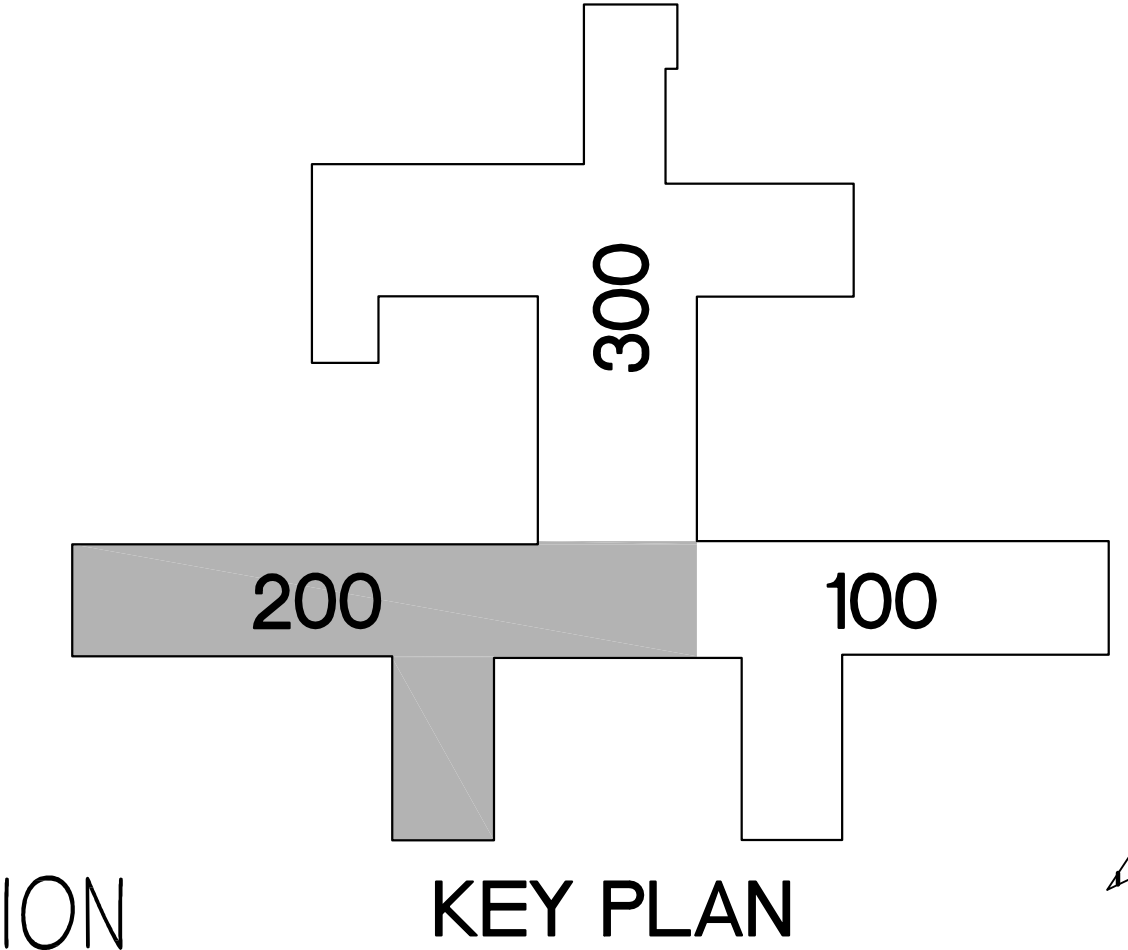
NURSE CALL SYMBOLS

☐	DOME LIGHT 2'6" - 1'0"	BNL
X	NONE = WALL (1'6" - 2' ABOVE DOOR) C = CEILING Z = ZONE	
①	SINGLE PATIENT STATION 3'6" - 4'4" MH - 1'0"	BN1
②	DUAL PATIENT STATION 3'6" - 4'4" MH - 1'0"	BN2
③	DUAL PUSH BUTTON/CUSTOM 1'6" - 4'4" MH - 3/4"C	BN3
④	BATH PULL STATION 1'6" - 4'4" - 3/4"C (TOILET) 1'6" - 6'8" - 3/4"C (SHOWER)	BN4
⑤	DUTY STATION 3'6" - 4'4" MH - 3/4"C	BN6
⑦	STAFF STATION 3'6" - 4'4" MH - 3/4"C	BN7
⑧	STAFF ASSIST/CODE BLUE 1'6" - 4'4" MH - 3/4"C	BN8
⑩	PUSH FOR HELP 1'6" - 4'4" MH - 3/4"C	BN10
⑪	STAFF REGISTRATION 1'6" - 4'4" MH - 3/4"C	BN11
⑫	NC4 JACK 1'6" - 4'4" MH - 3/4"C	BN12
⑬	SPECIALTY PLATE	BNM
⑭ LCD	MASTER STATION 1'6" - 16' MH - 3/4"C	BNLCD
⑭ TSH	MASTER STATION 1'6" - 16' MH - 3/4"C	BNMST
⑮	CODE BLUE 1'6" - 4'4" MH - 3/4"C	BNCB
⑯	CODE PINK/BABY MISSING 1'6" - 4'4" MH - 3/4"C	BNCP
⑰	BABY MISSING 1'6" - 4'4" MH - 3/4"C	BNBM
⑱	STAFF ASSIST 1'6" - 4'4" MH - 3/4"C	BNSA
⑲	UNIVERSAL INTERFACE 3'6" - ABOVE CEILING - 3/4"C	BNUI
⑳	CALL CORD	BNCC
㉑	PILLOW SPEAKER	BNPS
㉒	TV CONTROL 3/4"C PATH FROM BED STATION TO TV	BNTV
㉓	37 PIN BED CONNECTOR 1'6" - 16' MH - 3/4"C	BNB7
㉔	BED LIGHT CONTROL 3/4"C PATH FROM BED STATION TO LIGHT	BNBL
NCC	NURSE CALL CONTROL CABINET SURFACE WALL MOUNT 30" x 30" (2) 2"C	BNUR
()	20AMP VAC PER CABINET (EMERGENCY) OBTAIN QUANTITY FROM VENDOR	
#-#-#	GCM#-JBUS#-ID#	BNMCM

three inches = one foot
 one and one half inches = one foot
 one inch = one foot
 three quarters inch = one foot
 one half inch = one foot
 three eighths inch = one foot
 one quarter inch = one foot
 one eighth inch = one foot



DEMOLITION NURSE CALL PLAN
 BLDG 01 - SIXTH LEVEL - SECTION 200
 SCALE: 1/8" = 1'-0"



100% BID DOCUMENTS - FOR CONSTRUCTION

35% SCHEMATIC SUBMISSION	03/14/2014
65% DESIGN DEVELOPMENT SUBMISSION	05/23/2014
95% CONSTRUCTION DOCUMENT SUBMISSION	08/08/2014
100% BID DOCUMENT SUBMISSION	05/19/2016
ADDENDUM 01	12/14/2016
Revisions	Date

CONSULTANTS:

ARCHITECT/ENGINEERS:

DIEKEMA HAMANN
 architecture+engineering
 612 South Park Street
 Kalamazoo, Michigan 49007
 15 Ionia Ave SW
 Grand Rapids, Michigan 49503
 TL 269.373.1108
 FX 269.373.1186

Drawing Title
 DEMOLITION NURSE CALL PLAN
 BLDG 01 - SIXTH LEVEL -
 SECTION 200

Approved Project Director

Project Title
 NURSE CALL SYSTEM
 REPLACEMENT
 BUILDINGS 1 AND 22

Location
 ALEDA E. LUTZ VA MEDICAL CENTER

Date
 MAY 19, 2016

Checked
 PN

Drawn
 SH

Project Number
 655-13-113

Building Number
 01

Drawing Number
 01-ES20
 Dwg. 22 of 45

Office of Construction and Facilities Management

Department of Veterans Affairs