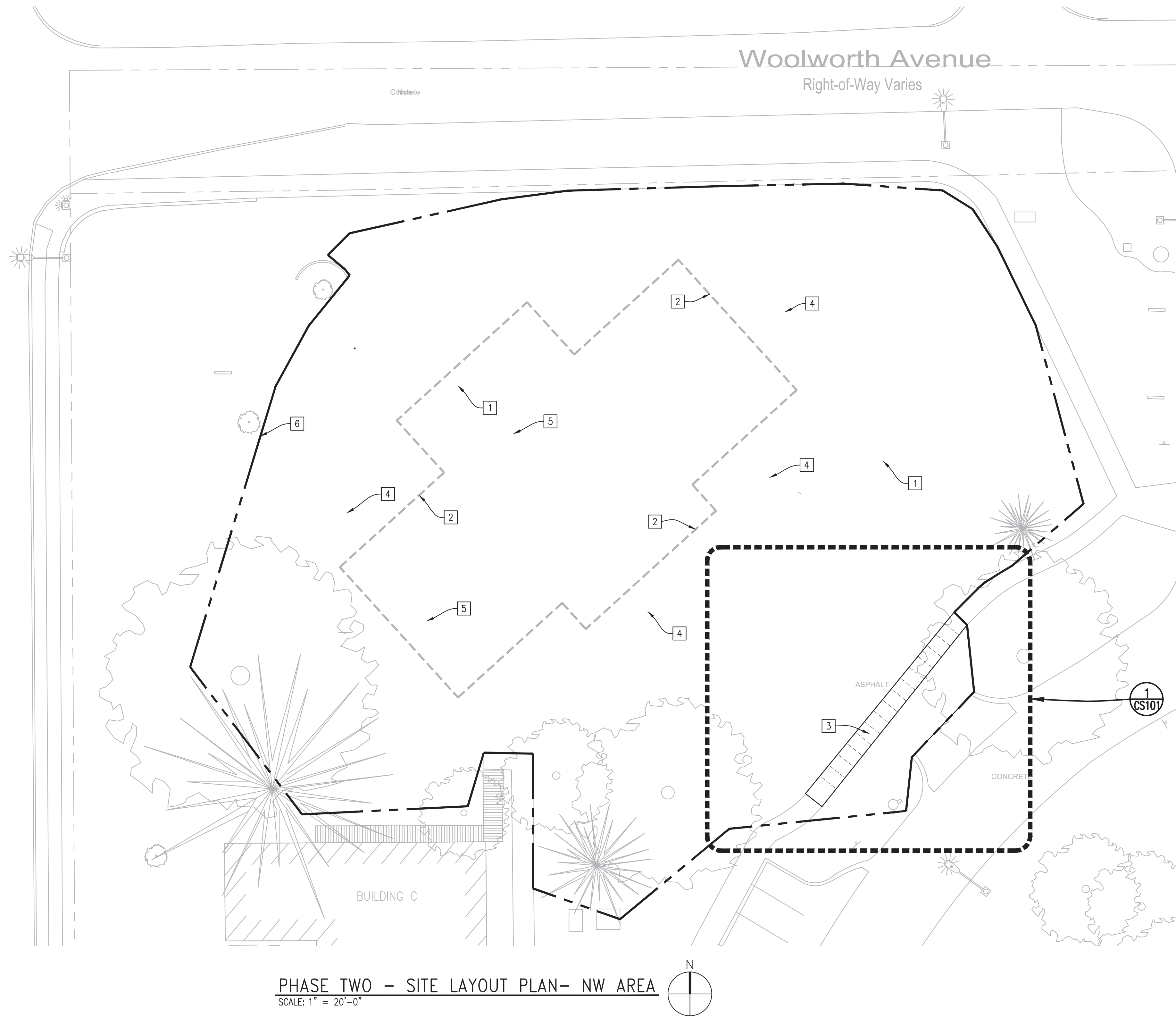


three inches = one foot
one and one half inches = one foot
one inch = one foot
three quarters inch = one foot
one half inch = one foot
three eighths inch = one foot
one quarter inch = one foot
one eighth inch = one foot

1 2 3 4 5 6 7 8 9

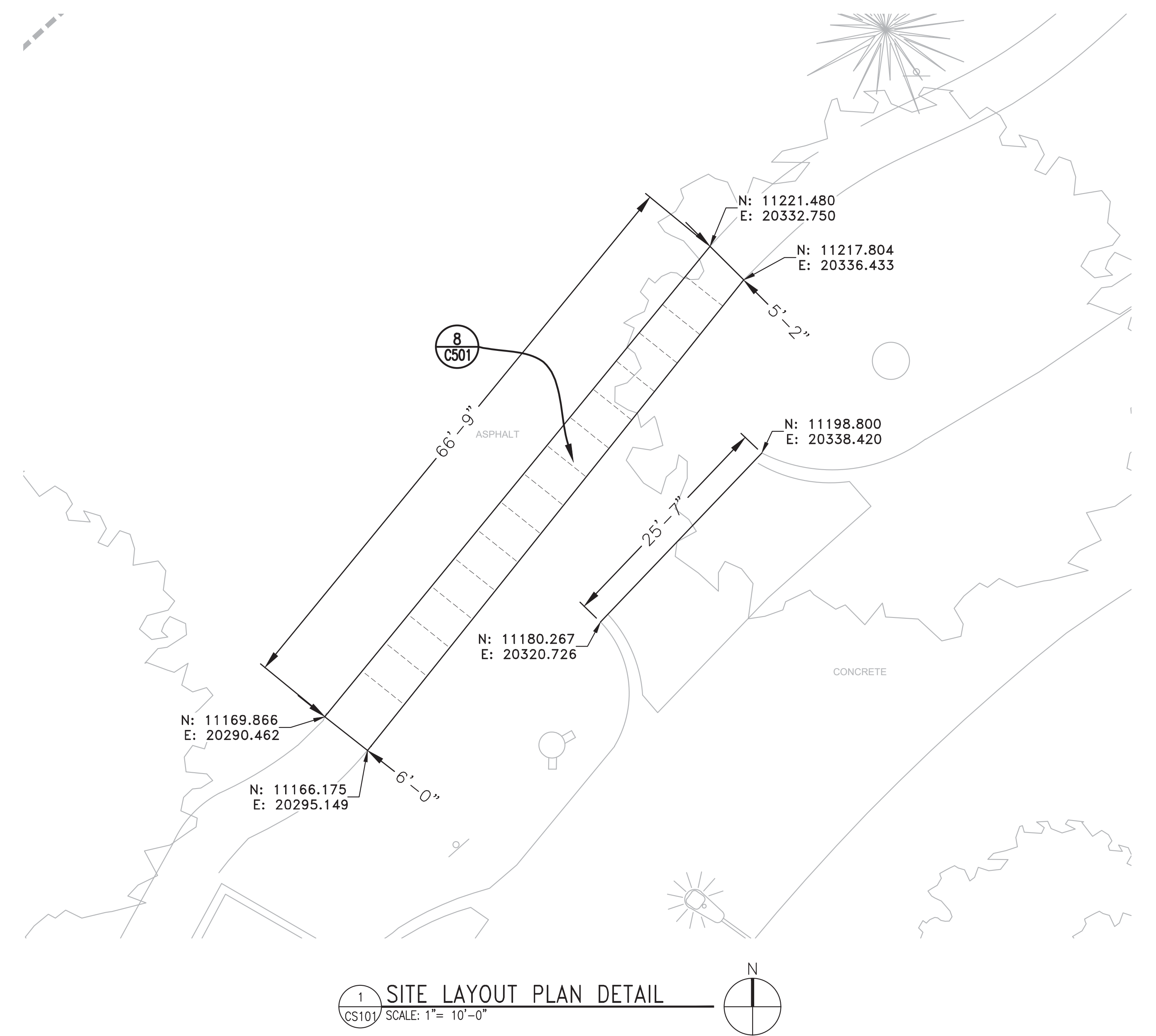


KEYED NOTES:

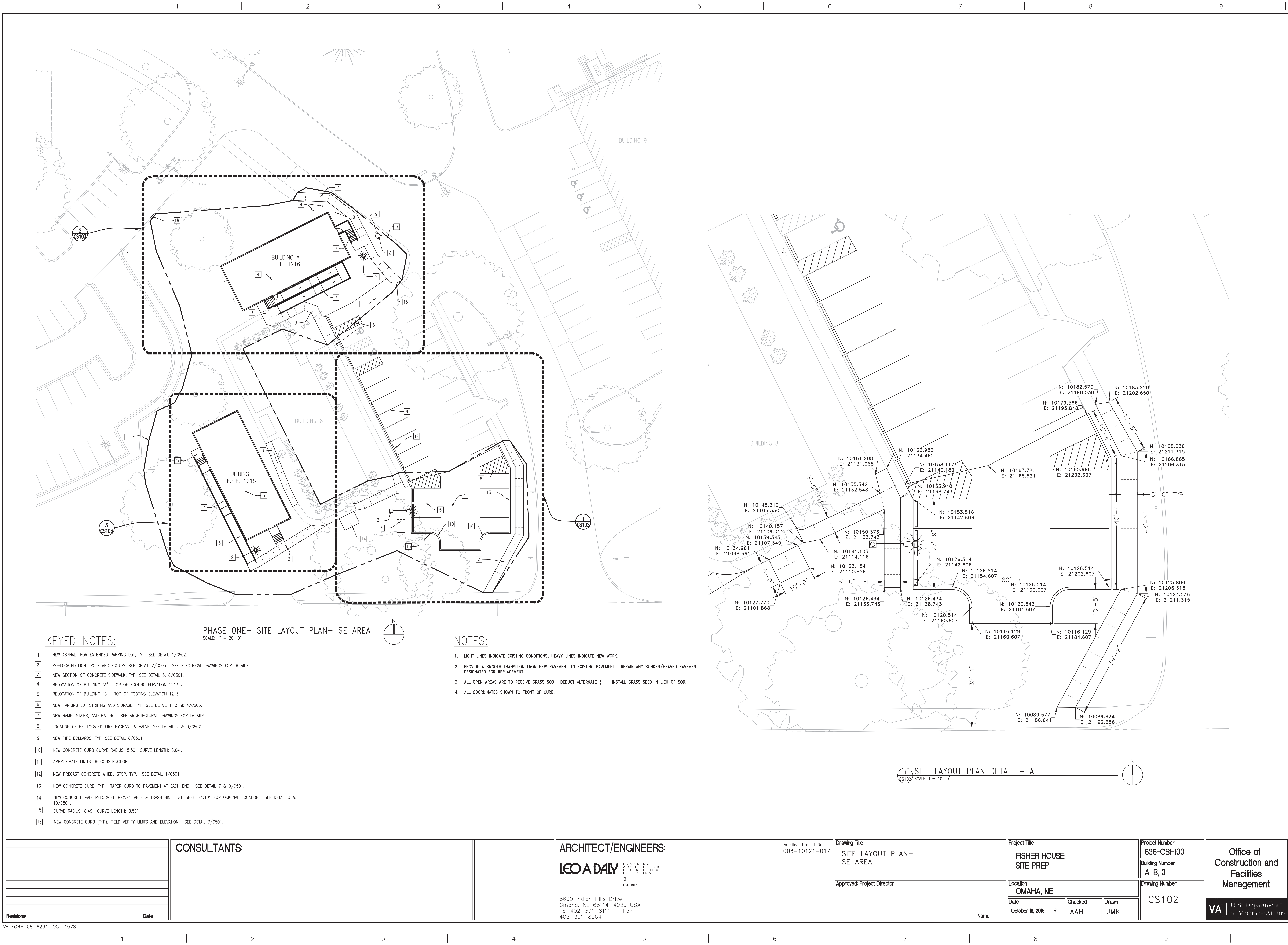
1. AREAS GRADED AFTER REMOVAL OF STRUCTURAL PIERS AND FOOTINGS FOR EXISTING MODULAR BUILDINGS A & B. SEE SHEET CD102 FOR ORIGINAL LOCATIONS.
2. OUTLINE OF FUTURE FISHER HOUSE STRUCTURE (N.I.C.).
3. NEW SECTION OF CONCRETE SIDEWALK. SEE DETAILS 3,8 ON SHEET CS01.
4. AREA OF NEW SOD (DISTURBED AREAS ONLY). DEDUCT ALTERNATE #1 - INSTALL GRASS SEED IN LIEU OF SOD.
5. AREA OF NEW SOIL FILL FOR EXISTING BUILDING 3 BASEMENT AND STAIRWELL, AS REQUIRED FOR DISTURBED AREAS ONLY. SEE SHEET CD102 FOR ORIGINAL LOCATION.
6. APPROXIMATE LIMITS OF CONSTRUCTION.

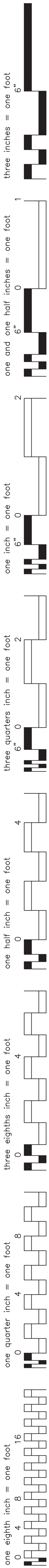
NOTES:

1. LIGHT LINES INDICATE EXISTING CONDITIONS, HEAVY LINES INDICATE NEW WORK.
2. PROVIDE A SMOOTH TRANSITION FROM NEW PAVEMENT TO EXISTING PAVEMENT. REPAIR ANY SUNKEN/HEAVED PAVEMENT DESIGNATED FOR REPLACEMENT.



		CONSULTANTS:		ARCHITECT/ENGINEERS:		Architect Project No. 003-10121-017		Drawing Title SITE LAYOUT PLAN- NW AREA		Project Title FISHER HOUSE SITE PREP		Project Number 636-CSI-100		Office of Construction and Facilities Management					
				LEO A DAILY PLANNING ARCHITECTURE ENGINEERING INTERIORS EST. 1915 8600 Indian Hills Drive Omaha, NE 68114-4039 USA Tel 402-391-8111 Fax 402-391-8564				Approved Project Director		Location OMAHA, NE		Building Number A, B, 3							
Revisions:		Date						Name		Date October 18, 2016		Checked AAH		Drawn JMK		Drawing Number CS101		VA U.S. Department of Veterans Affairs	

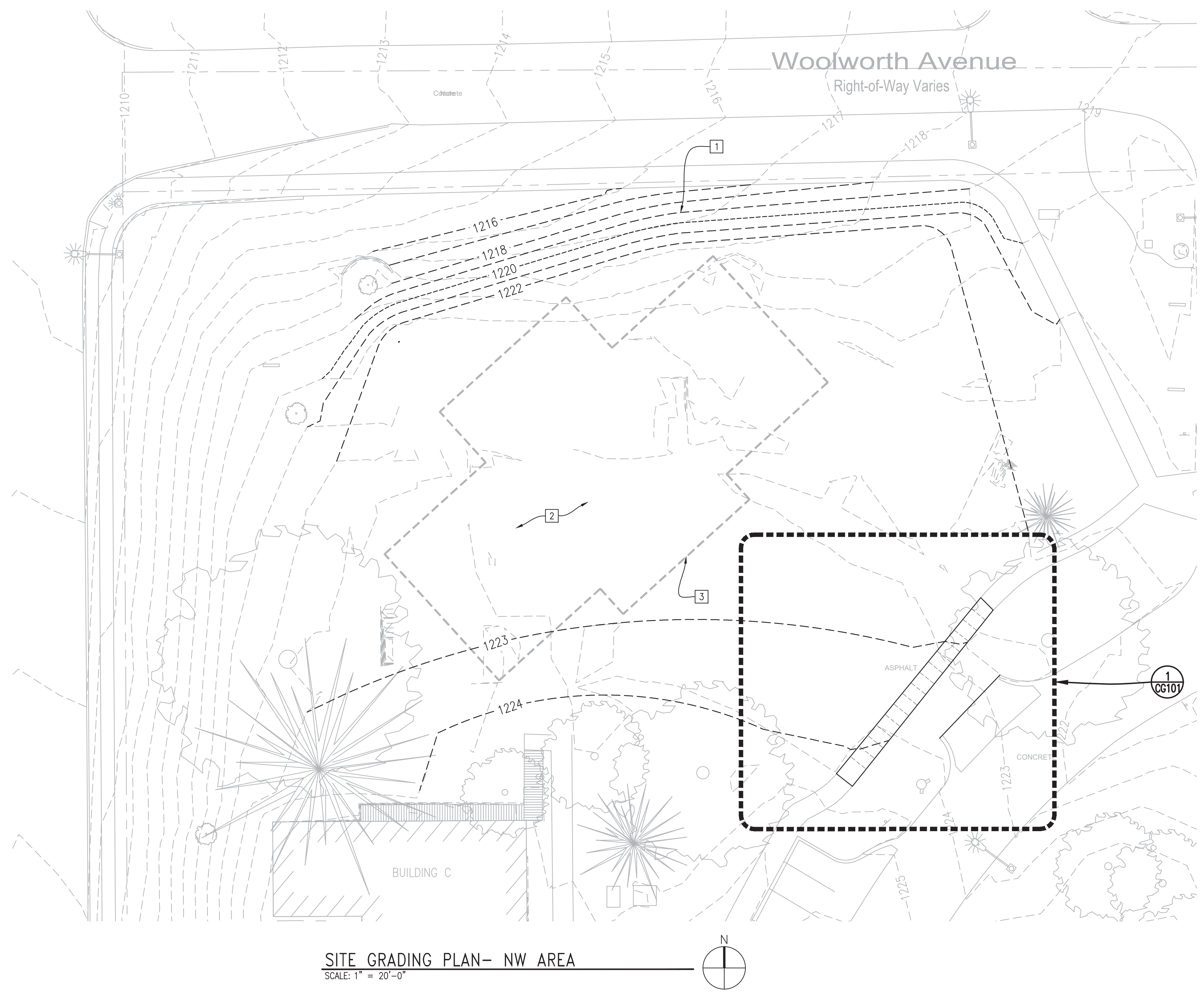




1. LIGHT LINES INDICATE EXISTING CONDITIONS, HEAVY LINES INDICATE NEW WORK.
2. PROVIDE A SMOOTH TRANSITION FROM NEW PAVEMENT TO EXISTING PAVEMENT. REPAIR ANY SUNKEN/HEAVED PAVEMENT DESIGNATED FOR REPLACEMENT.

VA FORM 08-6231, OCT 1978

one eighth inch = one foot
one quarter inch = one foot
one half inch = one foot
three eighths inch = one foot
one inch = one foot
three quarters inch = one foot
one and one half inches = one foot
three inches = one foot

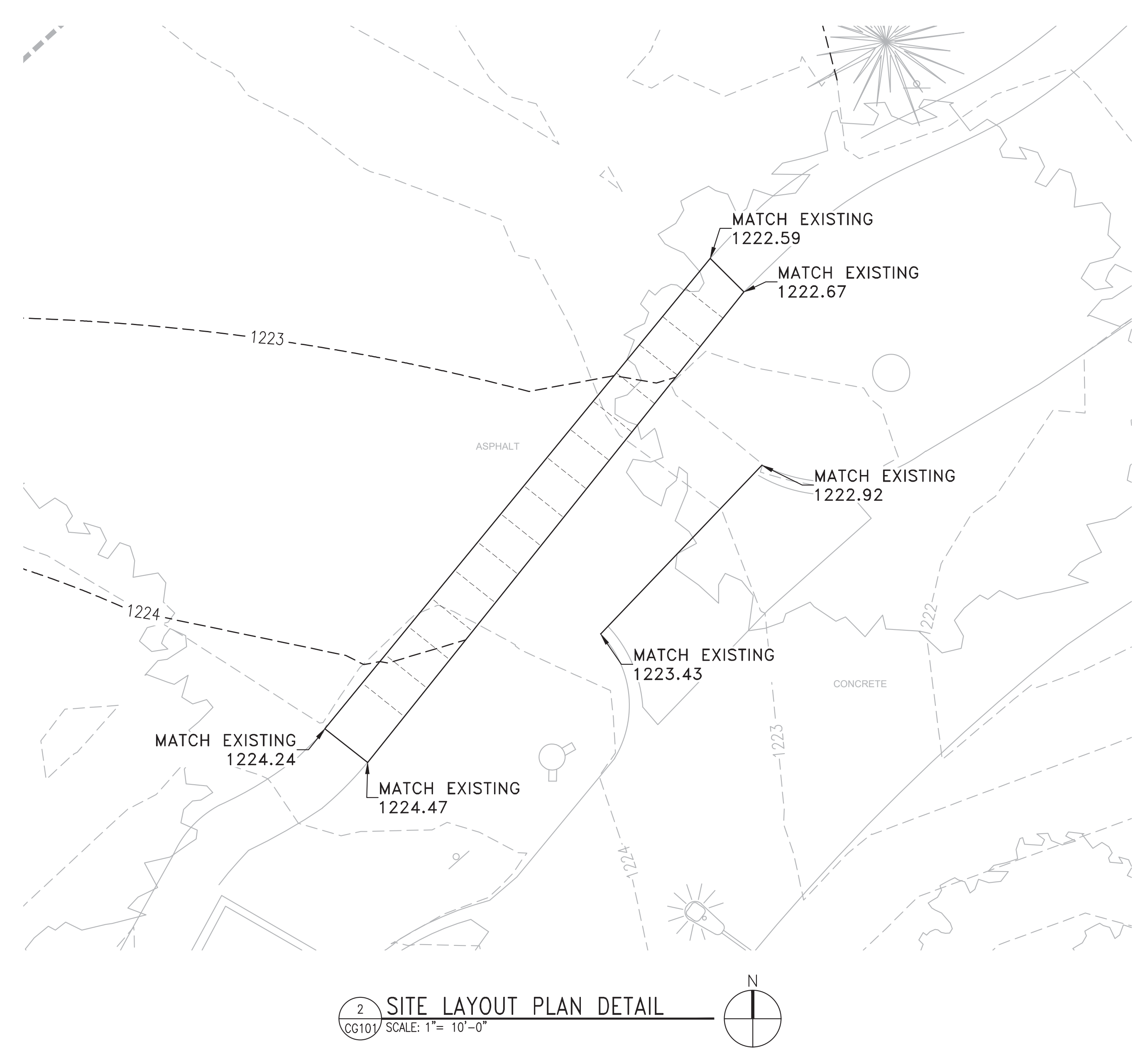


GRADING KEYED NOTES:

- 1 GRADE TO 3:1 SLOPE MAX.
- 2 GRADE TO DRAIN.
- 3 ESTIMATED LIMITS OF THE FUTURE BUILDING (N.I.C.).

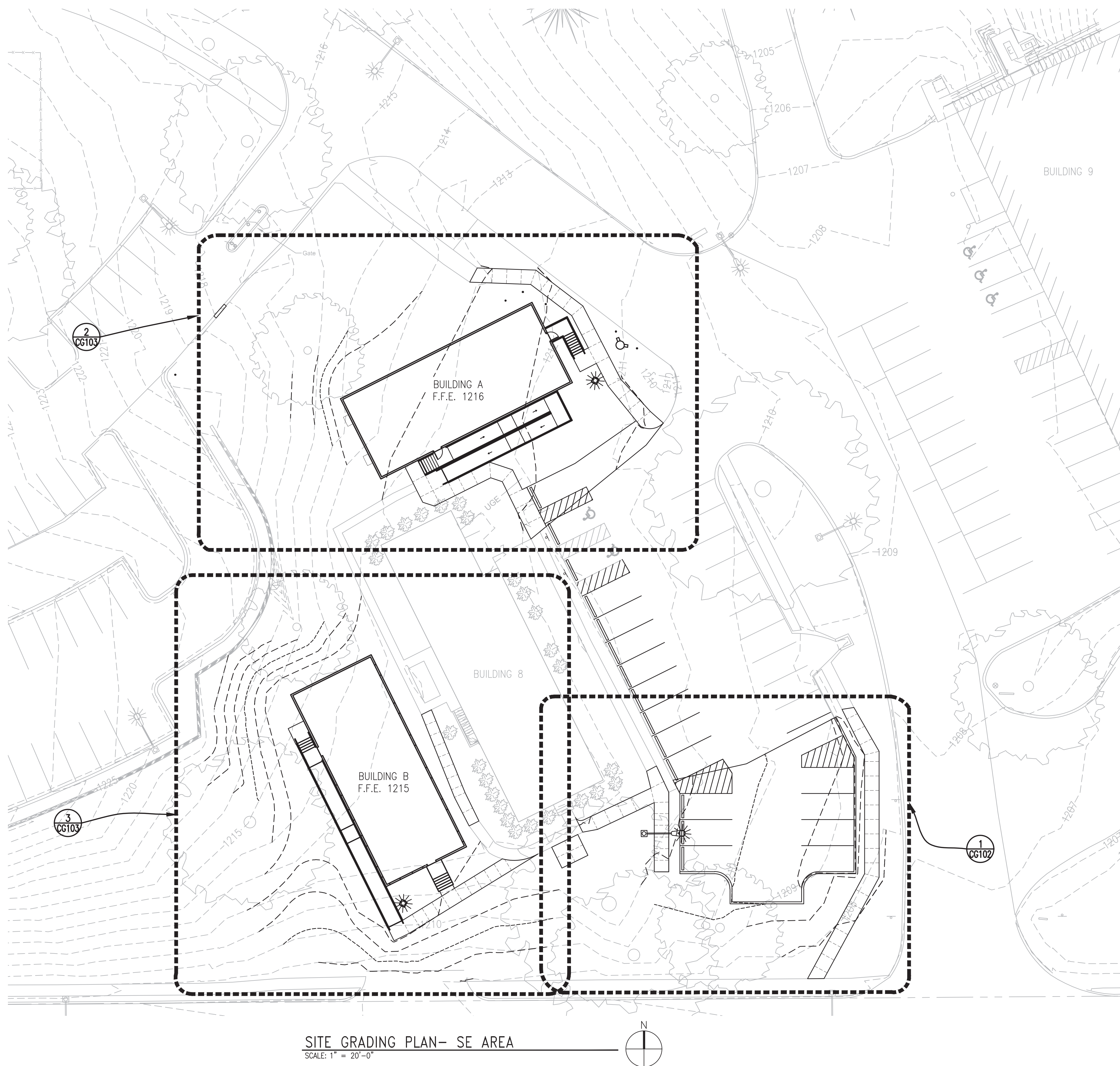
NOTES:

- 1. LIGHT LINES INDICATE EXISTING CONDITIONS, HEAVY LINES INDICATE NEW WORK.
- 2. PROVIDE A SMOOTH TRANSITION FROM NEW PAVEMENT TO EXISTING PAVEMENT. REPAIR ANY SUNKEN/HEAVED PAVEMENT DESIGNATED FOR REPLACEMENT.



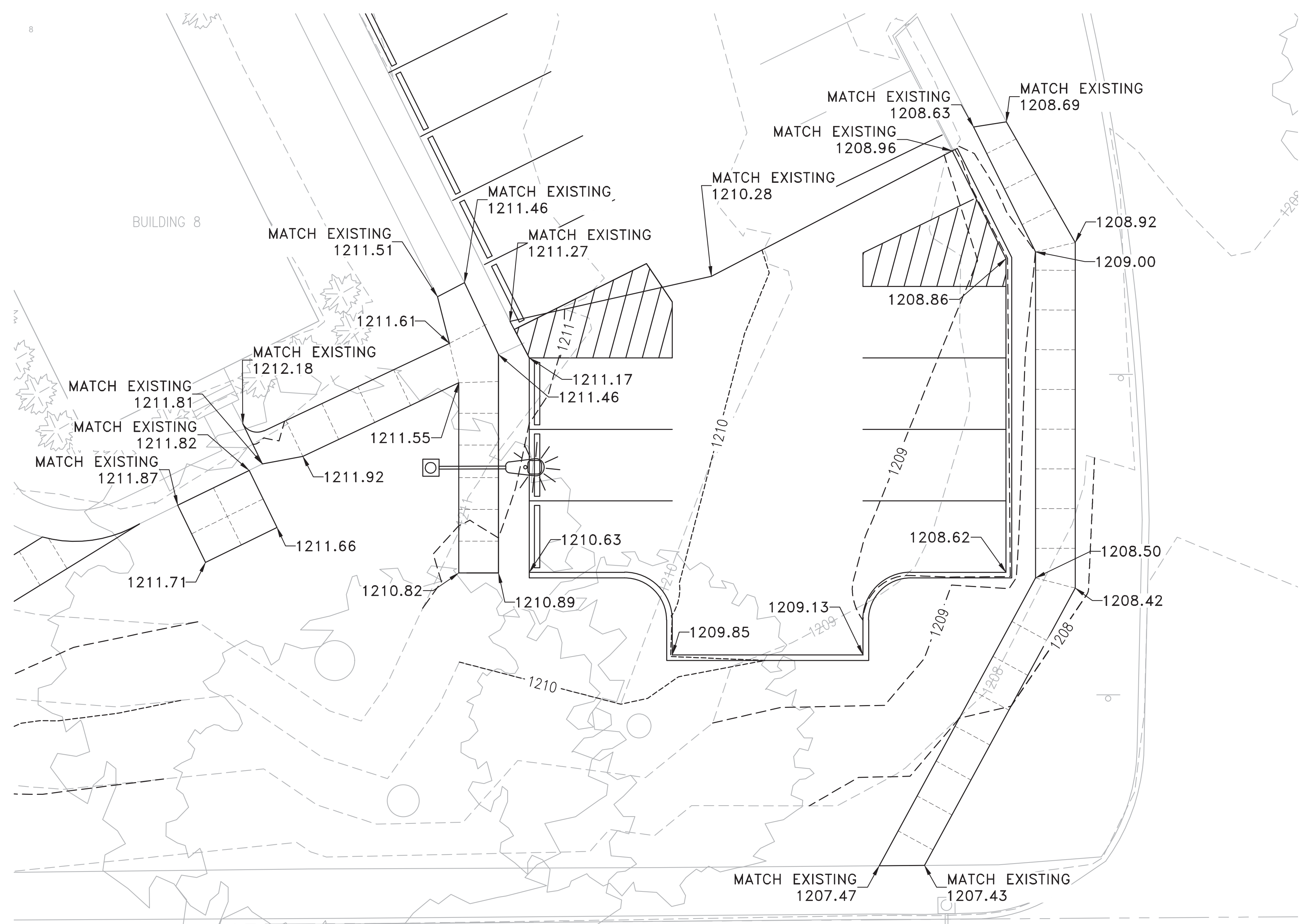
		CONSULTANTS:		ARCHITECT/ENGINEERS:		Architect Project No. 003-10121-017		Drawing Title SITE GRADING PLAN- NW AREA		Project Title FISHER HOUSE SITE PREP		Project Number 636-CSI-100		Office of Construction and Facilities Management VA U.S. Department of Veterans Affairs	
				LEO A DAILY PLANNING ARCHITECTURE ENGINEERING INTERIORS EST. 1915				Approved Project Director		Location OMAHA, NE		Building Number A, B, 3			
				8600 Indian Hills Drive Omaha, NE 68114-4039 USA Tel 402-391-8111 Fax 402-391-8564				Date October 18, 2016 R		Checked AAH		Drawn JMK			
Revisions:		Date						Name				Drawing Number CG101			

one eighth inch = one foot
one quarter inch = one foot
three eighths inch = one foot
one half inch = one foot
one inch = one foot
three quarters inch = one foot
one and one half inches = one foot
three inches = one foot



NOTES:

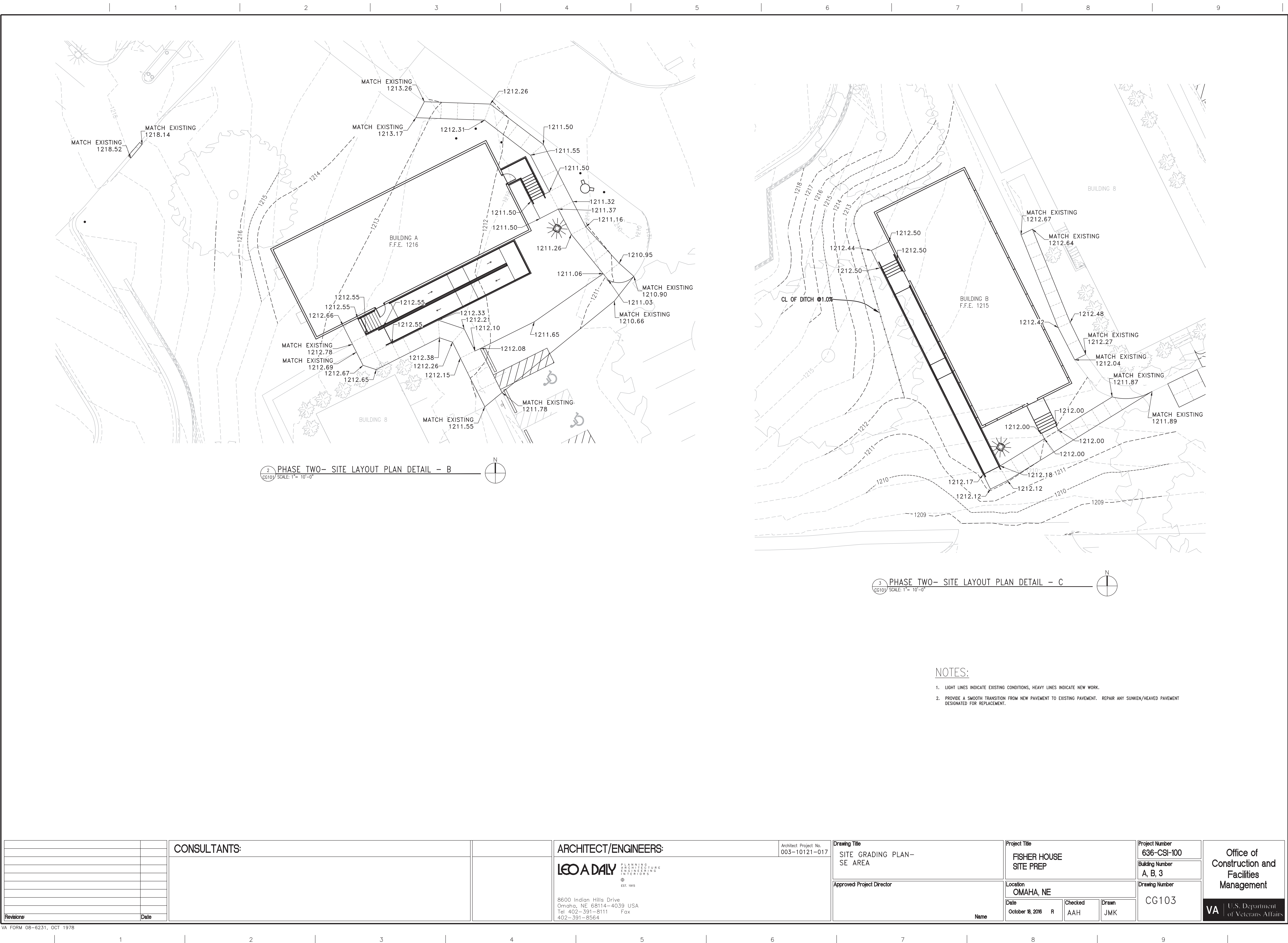
1. LIGHT LINES INDICATE EXISTING CONDITIONS, HEAVY LINES INDICATE NEW WORK.
2. PROVIDE A SMOOTH TRANSITION FROM NEW PAVEMENT TO EXISTING PAVEMENT. REPAIR ANY SUNKEN/HEAVED PAVEMENT DESIGNATED FOR REPLACEMENT.
3. ALL ELEVATIONS SHOWN TO FRONT OF CURB.
4. GRADE TO 3:1 SLOPE MAX.



1 SITE GRADING PLAN DETAIL - A
CG102 SCALE: 1" = 10'-0"

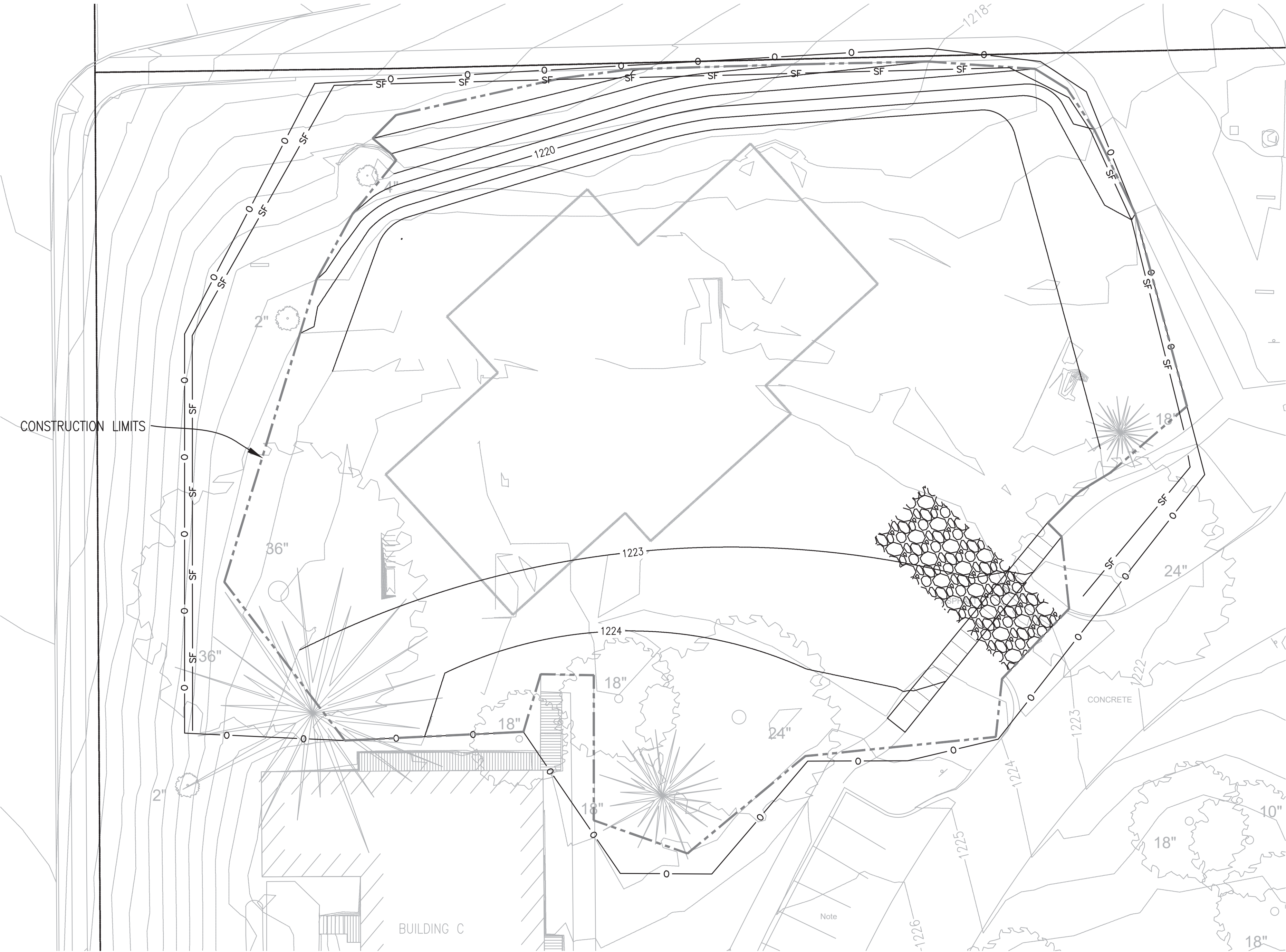
		CONSULTANTS:		ARCHITECT/ENGINEERS: LEO A DAILY PLANNING ARCHITECTURE ENGINEERING INTERIORS EST. 1915 8600 Indian Hills Drive Omaha, NE 68114-4039 USA Tel 402-391-8111 Fax 402-391-8564		Architect Project No. 003-10121-017		Drawing Title SITE GRADING PLAN- SE AREA				Project Title FISHER HOUSE SITE PREP				Project Number 636-CSI-100		Office of Construction and Facilities Management	
								Approved Project Director				Location OMAHA, NE				Building Number A, B, 3			
								Name				Date October 18, 2016 R		Checked AAH		Drawing Number CG102			
														Drawn JMK					
Revisions:		Date										VA				U.S. Department of Veterans Affairs			

three inches = one foot
one and one half inches = one foot
one inch = one foot
three quarters inch = one foot
three eighths inch = one foot
one quarter inch = one foot
one eighth inch = one foot

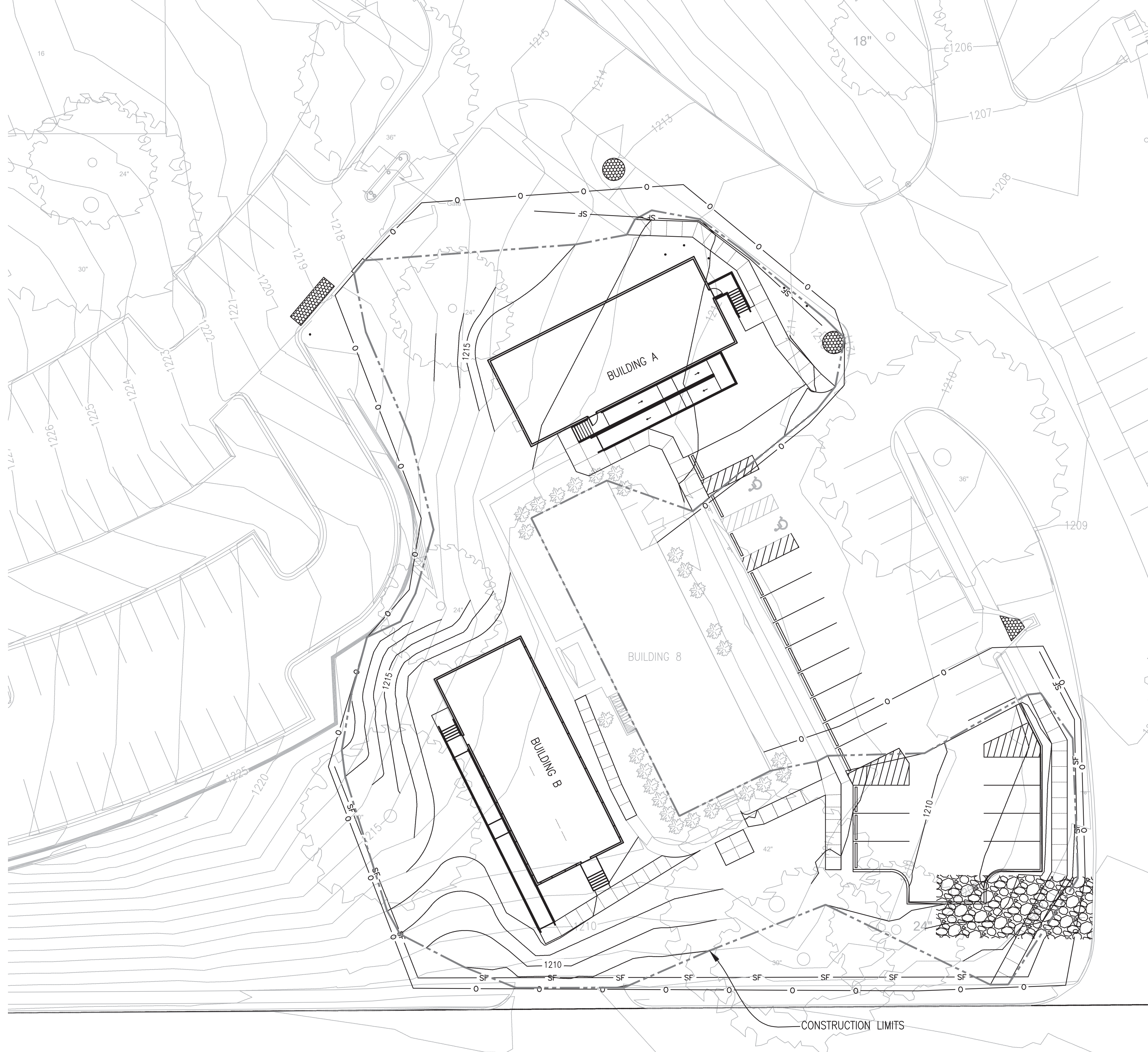


CONSULTANTS:		ARCHITECT/ENGINEERS:		Architect Project No. 003-10121-017	Drawing Title SITE GRADING PLAN- SE AREA	Project Title FISHER HOUSE SITE PREP	Project Number 636-CSI-100	Office of Construction and Facilities Management	
		LEO A DAILY			Approved Project Director	Location OMAHA, NE	Building Number A, B, 3		
Revisions:		8600 Indian Hills Drive Omaha, NE 68114-4039 USA Tel 402-391-8111 Fax 402-391-8564			Name	Date October 18, 2016	Checked AAH	Drawn JMK	Drawing Number CG103

three inches = one foot
one and one half inches = one foot
one inch = one foot
three quarters inch = one foot
one half inch = one foot
three eighths inch = one foot
one quarter inch = one foot
one eighth inch = one foot



SWPPP PLAN- NW SITE PLAN
SCALE: 1" = 20'-0"



SWPPP PLAN- SE SITE PLAN
SCALE: 1" = 20'-0"

- SWPPP LEGEND
- STABILIZED CONSTRUCTION ENTRANCE. SEE DETAIL 3/CG301.
 - SF SILT FENCE. SEE DETAIL 1/CG301
 - CURB INLET PROTECTION - EXISTING STRUCTURES. SEE DETAIL 2 & 4/CG301,
 - CHAIN LINK CONSTRUCTION FENCE. SEE DETAIL 2/C501

SEE SHEETS CG300 AND CG301 FOR NOTES AND DETAILS PERTAINING TO THE SWPPP.
PROVIDE EROSION CONTROL MATTING FOR SEEDING ALTERNATE #1 ON ALL SLOPES 3:1 OR GREATER.

EROSION CONTROL MEASURES ONLY NEED TO BE INSTALLED FOR THE CURRENT PHASE OF CONSTRUCTION BEING PERFORMED. ALL MEASURES SHOWN TOGETHER ON THIS SHEET FOR REFERENCE ONLY. SEE SHEET CE100 FOR PHASES.

Revisions	Date

CONSULTANTS:

ARCHITECT/ENGINEERS:	Architect Project No.
LEO A DAILY PLANNING ARCHITECTURE ENGINEERING INTERIORS EST. 1915 8600 Indian Hills Drive Omaha, NE 68114-4039 USA Tel 402-391-8111 Fax 402-391-8564	003-10121-017

Drawing Title	Approved Project Director
SWPPP- OVERALL SITE PLAN	
	Name

Project Title	Project Number
FISHER HOUSE SITE PREP	636-CSI-100
	Building Number A, B, 3
	Drawing Number CG201

Office of Construction and Facilities Management
VA U.S. Department of Veterans Affairs

1

- three inches = one foot

4

- ## SCHEDULE

1. PRIOR TO ANY STRIPPING OF EXISTING VEGETATION OR GRADING

- ALL BMP'S NEEDED AND ASSOCIATED WITH THE
FURTHERMORE, INSPECTOR APPROVAL MUST
THE START OF ANY STRIPPING OF EXISTING
ING.
INSTALLATION MUST OCCUR PRIOR TO ANY LOT
SURES MUST BE INITIATED AS SOON AS
S OF THE SITE WHERE CONSTRUCTION
TEMPORARILY OR PERMANENTLY CEASED, BUT IN
14 DAYS AFTER THE CONSTRUCTION
TION OF THE SITE HAS TEMPORARILY OR

6

7

one and one half inches = one foot

Architect Project No.
003-10121-017

PLANNING
ARCHITECTURE
ENGINEERING
INTERIORS

EST. 1915

Architect Project No.
003-10121-017

Approved: Project Director

Location	
----------	--

Building Number

Drawing Number

VA | U.S. Department
of Veterans Affairs

VA FORM 08-6231, OCT 1978

three inches = one foot
one and one half inches = one foot
one inch = one foot
three quarters inch = one foot
one half inch = one foot
three eighths inch = one foot
one quarter inch = one foot
one eighth inch = one foot

STABILIZATION SEEDING TABLES

TEMPORARY SEEDING AND RATES

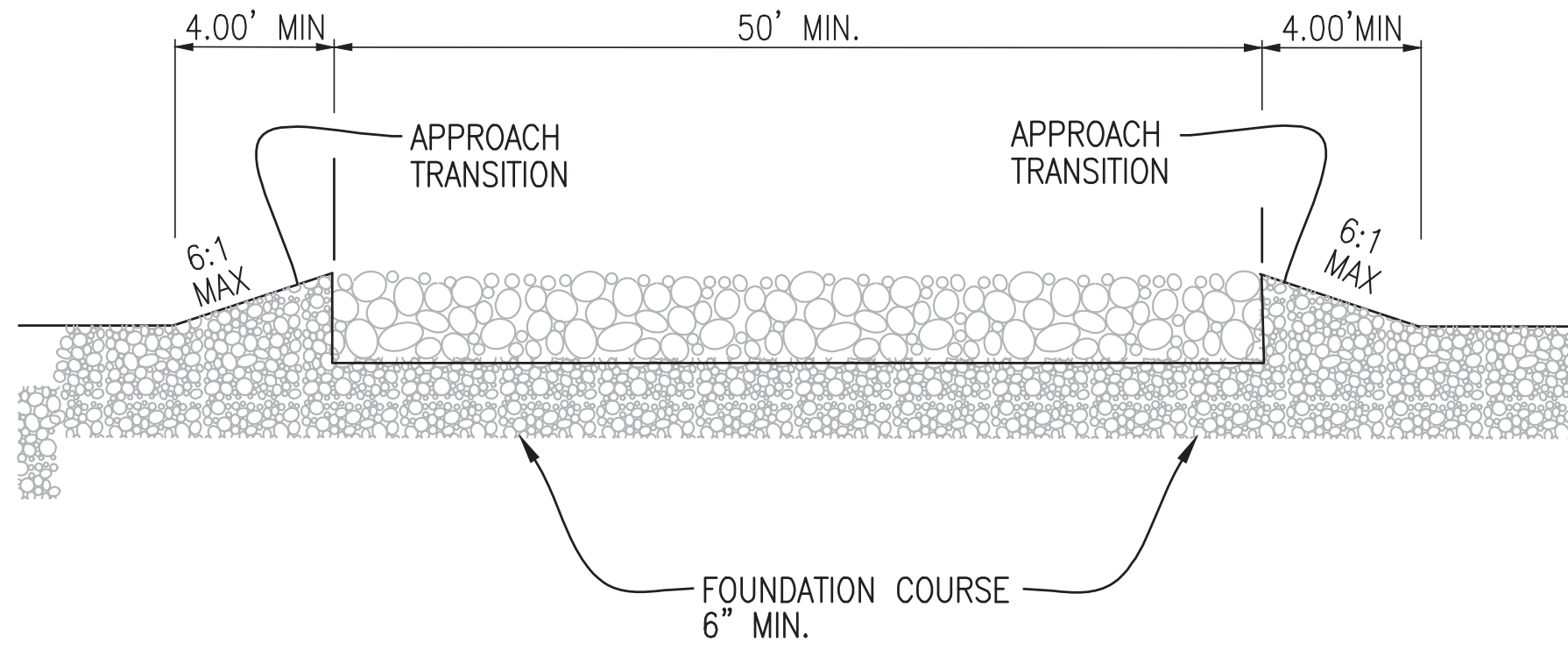
TIME OF YEAR	SPECIES	SEEDING RATES
MARCH 15 TO MAY 15	SPRING OATS BARLEY	2 bu/AC
	PERENNIAL RYE GRASS	2 bu/AC
	ORCHARD GRASS	30-40 lbs/AC
		20-25 lbs/AC
MAY 16 TO JULY 15	GRAIN SORGHUM (DRILLED)	10-20 lbs/AC
	FORAGE SORGHUM (DRILLED)	10-20 lbs/AC
	HYBRID SUDAN GRASS	20-30 lbs/AC
JULY 16 TO OCTOBER 15	SPRING OATS BARLEY	2 bu/AC 2 bu/AC
AUGUST 16 TO OCTOBER 15	WINTER WHEAT	1.5 bu/AC
	WINTER RYE	1.5 bu/AC
OCTOBER 15 TO MARCH 15	NO PLANTING. CONSIDER USING MULCHES	

MINIMUM FERTILIZATION RATES FOR COMMERCIAL INORGANIC FERTILIZER

	BROADCAST OR HYDRAULIC	MECH. DRILL
AVAILABLE NITROGEN (N2)	72 lbs/AC	64 lbs/AC
AVAILABLE PHOSPHORIC ACID (P205)	192 lbs/AC	184 lbs/AC

COVER CROP SEEDING AND RATES

TIME OF YEAR	COVER CROP	SEEDING RATES
MARCH 15 TO MAY 15	SPRING OATS	2 bu/AC
MAY 16 TO JULY 15	GRAIN SORGHUM (DRILLED)	10-20 lbs/AC
	FORAGE SORGHUM (DRILLED)	10-20 lbs/AC
	HYBRID SUDAN GRASS (DRILLED)	20-30 lbs/AC
JULY 16 TO OCTOBER 15	SPRING OATS	2 bu/AC
	WINTER WHEAT	1.5 bu 90 lbs/AC
	RYE	1.5 bu 90 lbs/AC
OCTOBER 15 TO MARCH 15	CONSIDER USING MULCHES	



PROFILE

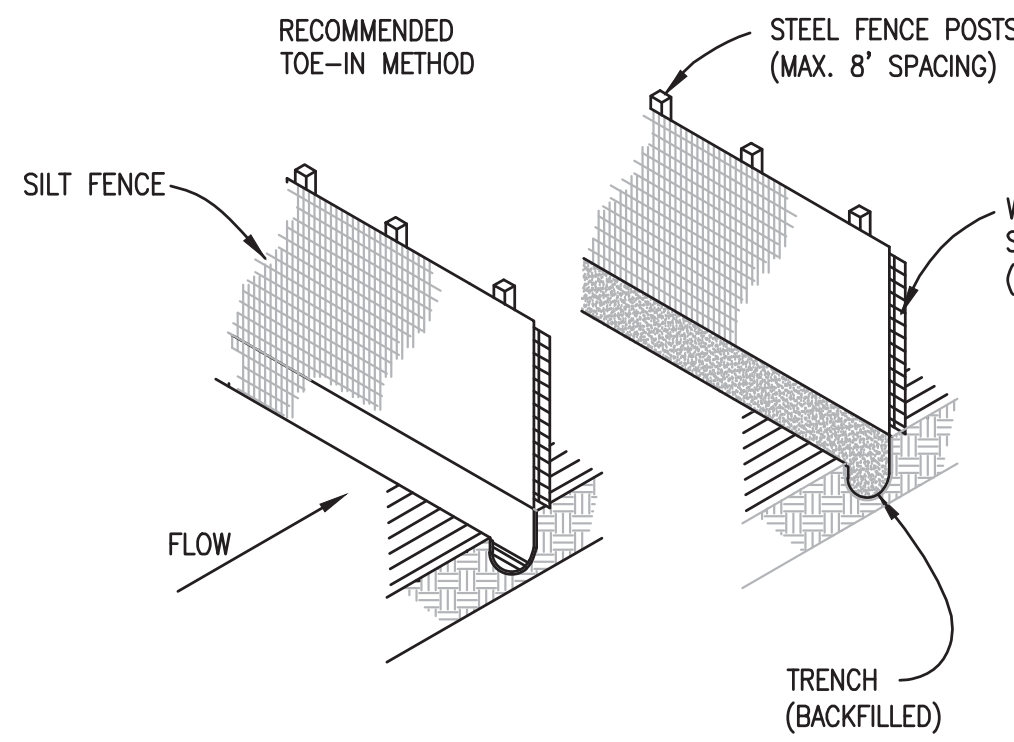
STABILIZATION CONSTRUCTION EXIT NOTES

- THE LENGTH OF THE TYPE 1 CONSTRUCTION EXIT SHALL BE AS INDICATED ON THE PLANS, BUT NOT LESS THAN 50'.
- THE COARSE AGGREGATE SHOULD BE OPEN GRADED WITH A SIZE OF 1" TO 1 1/2".
- THE APPROACH TRANSITIONS SHOULD BE NO STEEPER THAN 6:1.
- THE CONSTRUCTION EXIT FOUNDATION COURSE SHALL BE FLEXIBLE BASE, BITUMINOUS CONCRETE, PORTLAND CEMENT CONCRETE, GEOWEB LOAD SUPPORT SYSTEM (OR EQUIVALENT GEOTEXTILE SYSTEM) OR OTHER MATERIAL CAPABLE OF SUPPORTING ANTICIPATED CONSTRUCTION TRAFFIC WHILE MAINTAINING OPERABLE EXIT.
- THE CONSTRUCTION EXIT SHALL BE GRADED TO ALLOW DRAINAGE TO A SEDIMENT TRAPPING DEVICE.
- THE GUIDELINES SHOWN HEREON ARE GUIDELINES ONLY AND MAY BE MODIFIED BY THE CONTRACTOR AS NEEDED TO MEET NPDES AND ALL OTHER PERMITTING REQUIREMENTS.

3

STABILIZED CONSTRUCTION ENTRANCE

N.T.S.



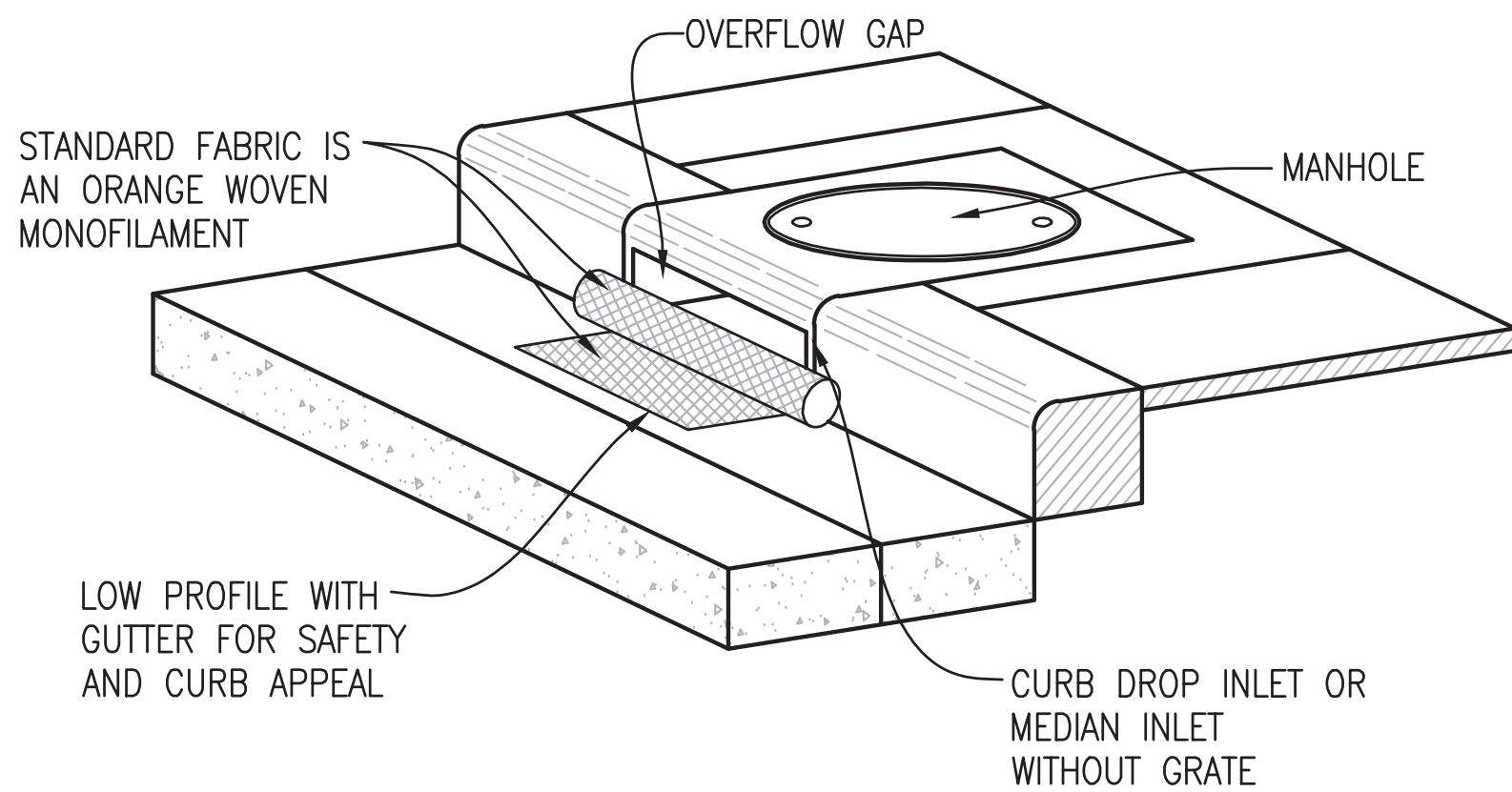
NOTES:

- STEEL POSTS WHICH SUPPORT THE SILT FENCE SHALL BE INSTALLED ON A SLIGHT ANGLE TOWARD THE ANTICIPATED RUNOFF SOURCE.
- SILT FENCE SHALL BE TRENCHED IN WITH A SPADE OR MECHANICAL TRENCHER SO THAT THE DOWNSLOPE FACE OF THE TRENCH IS FLAT AND PERPENDICULAR TO THE LINE OF FLOW.
- THE TRENCH SHOULD BE A MINIMUM OF 6" DEEP AND 3"-4" WIDE TO ALLOW FOR THE SILT FENCE TO BE PLACED IN THE GROUND AND BACKFILLED.
- SILT FENCE SHOULD BE SECURELY FASTENED TO EACH STEEL SUPPORT POST OR TO WOVEN WIRE WHICH IS IN TURN ATTACHED TO THE STEEL FENCE POSTS.
- INSPECTION SHALL BE FREQUENT AND REPAIR OR REPLACEMENT SHALL BE MADE PROMPTLY AS NEEDED.
- SILT FENCE SHALL BE REMOVED WHEN IT HAS SERVED ITS USEFULNESS SO AS NOT TO BLOCK OF WIDE STORM FLOW OR DRAINAGE.
- SEDIMENT TRAPPED BY THIS PRACTICE SHALL BE UNIFORMLY DISTRIBUTED ON THE SOURCE AREA PRIOR TO TOPSOILING.

1 SILT FENCE

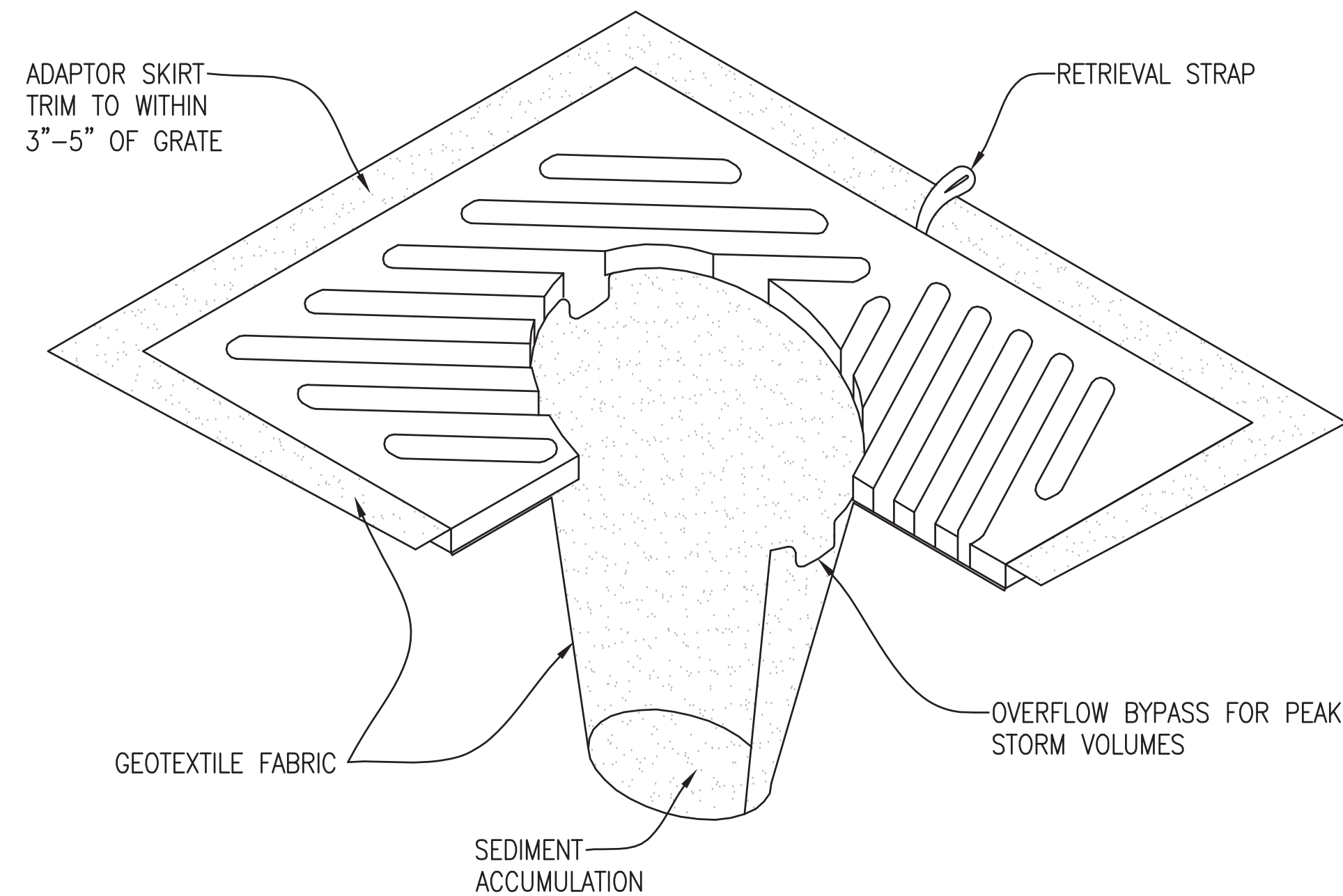
N.T.S.

INSTALLATION: PLACE TRUE DAM ON GROUND WITH AGGREGATE POUCH ON THE STREET SIDE (UPHILL SIDE) OF THE FLOW. OPEN VELCRO ACCESS POUCH LOCATED ON THE STREET SIDE EDGE OF THE UNIT. FILL POUCH WITH AGGREGATE TO A LEVEL THAT WILL KEEP THE UNIT IN PLACE DURING A RAIN EVEN AND CREATE A SEAL BETWEEN THE TRUE DAM AND THE SURFACE ON THE STREET. RESEAL VELCRO ACCESS.



2 CURB INLET BARRIER

N.T.S.



NOTES:

- INSERT SHALL BE INSTALLED PRIOR TO CLEARING AND GRADING ACTIVITY, OR UPON PLACEMENT OF A NEW CATCH BASIN.
- SEDIMENT SHALL BE REMOVED FROM THE UNIT WHEN IT BECOMES HALF FULL.
- SEDIMENT REMOVAL SHALL BE ACCOMPLISHED BY REMOVING THE INSERT, EMPTYING, AND RE-INSERTING IT INTO THE CATCH BASIN.
- CATCH BASIN IN NON-PAVED AREAS OR PROPOSED AREAS NOT YET PAVED SHALL HAVE INLET PROTECTION INSTALLED IN CONJUNCTION WITH SILT FENCE PROTECTION.

4 GEOTEXTILE DROP INLET PROTECTION

N.T.S.

		CONSULTANTS:		ARCHITECT/ENGINEERS:		Architect Project No. 003-10121-017		Drawing Title SWPPP- PROJECT NOTES AND DETAILS		Project Title FISHER HOUSE SITE PREP		Project Number 636-CSI-100		Office of Construction and Facilities Management VA U.S. Department of Veterans Affairs			
				LEO A DAILY				Approved Project Director		Location OMAHA, NE		Building Number A, B, 3					
				EST. 1915						Date October 18, 2016		Checked AAH				Drawing Number CG301	
				8600 Indian Hills Drive Omaha, NE 68114-4039 USA Tel 402-391-8111 Fax 402-391-8564				Name		Drawn JMK							
Revisions:		Date															