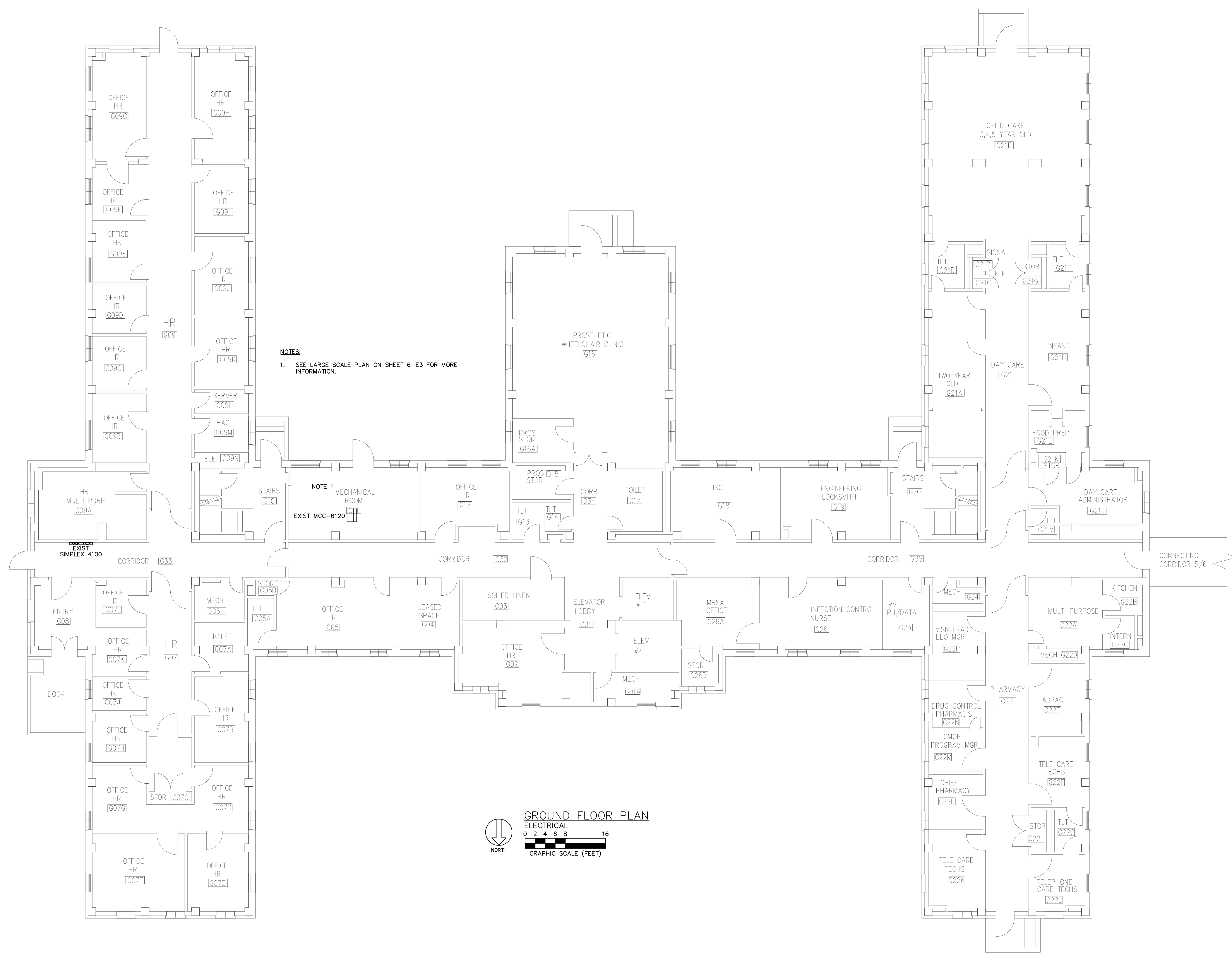
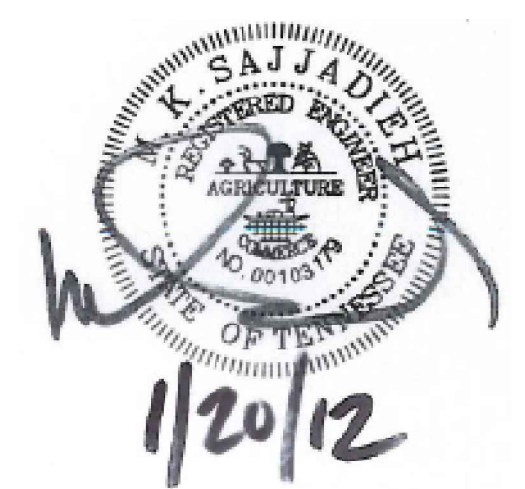
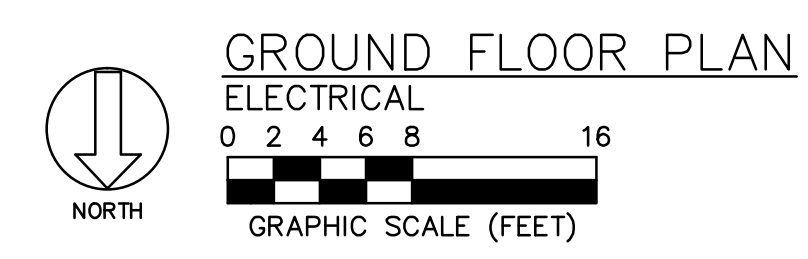


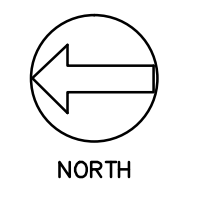
three eighths inch = one foot
one quarter inch = one foot
one eighth inch = one foot
three eighths inch = one foot
one half inch = one foot
one quarter inch = one foot
three quarters inch = one foot
one inch = one foot
one and one half inches = one foot
three inches = one foot



NOTES:
1. SEE LARGE SCALE PLAN ON SHEET 6-E3 FOR MORE INFORMATION.



CONSTRUCTION DOCUMENTS




Revisions	Date



Tennessee Valley Healthcare System



 SAJJADI ENGINEERING GROUP, P.C. 1807 ALBANY, SUITE 101 MURFREESBORO, TENNESSEE 37139 www.sajjadiengineering.com PROJECT: 11-37	Drawing Title GROUND FLOOR PLAN- ELECTRICAL		Project Title REPLACE ATTIC AHU's- BLDG 6		Date 01/20/2012
	Approved: --	Approved: Facility Manager	Building Number 6	Checked JS	Drawn AL
Approved: --	Approved: Director	Location VAMC - MURFREESBORO	DRAWING NO. 6-E2		FILE NAME --

Veterans Administration