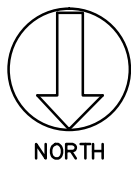
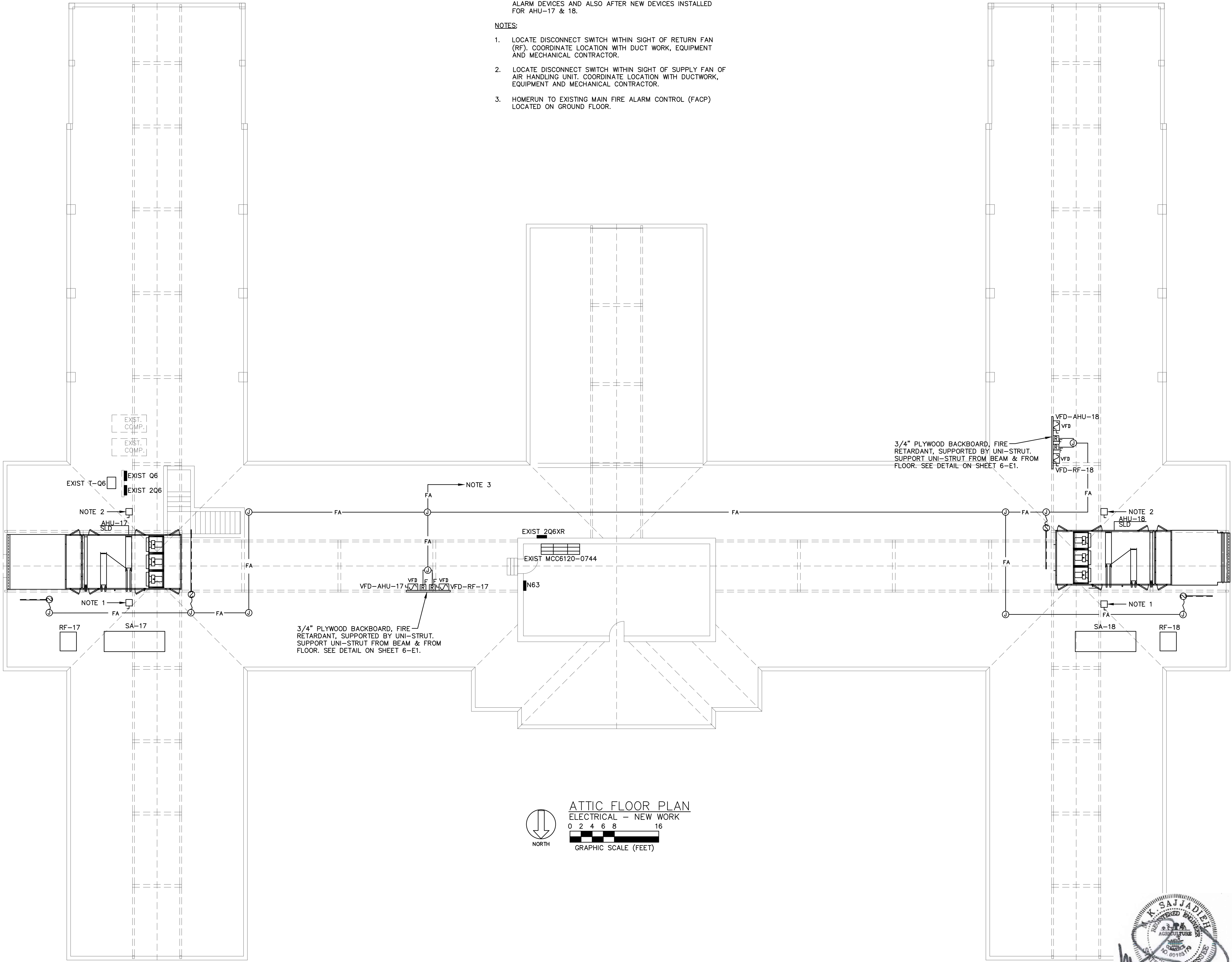


GENERAL NOTES:

1. PROVIDE FIRE ALARM SMOKE DUCT DETECTOR IN RETURN AND SUPPLY DUCT OF AHU-17 & 18. PROVIDE SHUTDOWN RELAY AND INDICATOR LIGHT AS REQUIRED. VERIFY EXACT LOCATION OF SMOKE DUCT DETECTOR AND SAMPLING TUBE IN SUPPLY AND RETURN DUCT WITH MECHANICAL CONTRACTOR. CONNECT SMOKE DUCT DETECTORS AND RELAYS TO EXISTING FIRE ALARM CONTROL PANEL (FACP). FIRE ALARM SYSTEM FOR THE BUILDING SHALL BE RECERTIFIED AFTER DEMOLITION OF FIRE ALARM DEVICES AND ALSO AFTER NEW DEVICES INSTALLED FOR AHU-17 & 18.

NOTES:

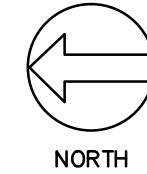
1. LOCATE DISCONNECT SWITCH WITHIN SIGHT OF RETURN FAN (RF). COORDINATE LOCATION WITH DUCT WORK, EQUIPMENT AND MECHANICAL CONTRACTOR.
2. LOCATE DISCONNECT SWITCH WITHIN SIGHT OF SUPPLY FAN OF AIR HANDLING UNIT. COORDINATE LOCATION WITH DUCTWORK, EQUIPMENT AND MECHANICAL CONTRACTOR.
3. HOMERUN TO EXISTING MAIN FIRE ALARM CONTROL (FACP) LOCATED ON GROUND FLOOR.



ATTIC FLOOR PLAN
ELECTRICAL - NEW WORK
0 2 4 6 8 16
GRAPHIC SCALE (FEET)



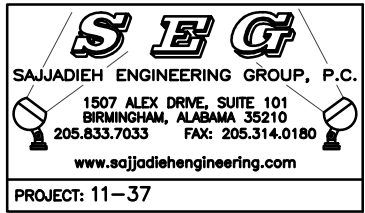
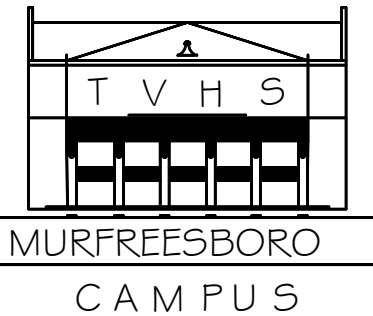
CONSTRUCTION DOCUMENTS



Revisions	Date



Tennessee Valley Healthcare System



Approved: --

Approved: --

Drawing Title

ATTIC PLAN-
NEW WORK - ELECTRICAL

Approved: Facility Manager

Approved: Director

Project Title

REPLACE ATTIC AHU's-
BLDG 6

Building Number

6

Checked

JS

Drawn

AL

Location

VAMC - MURFREESBORO

Date

01/20/2012

Project No.

626A4-11-204

DRAWING NO.

6-E5

FILE NAME

--

Veterans
Administration