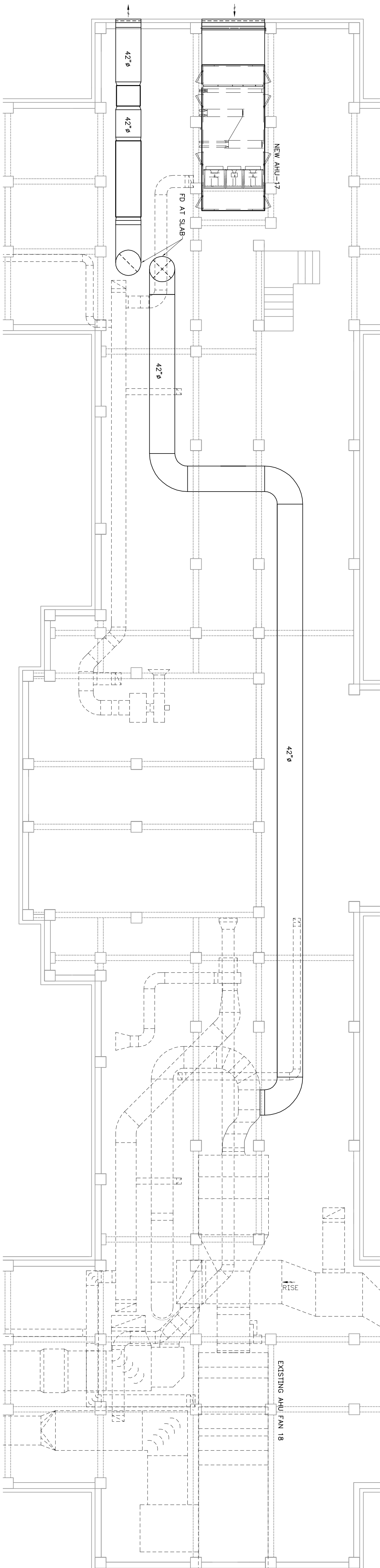


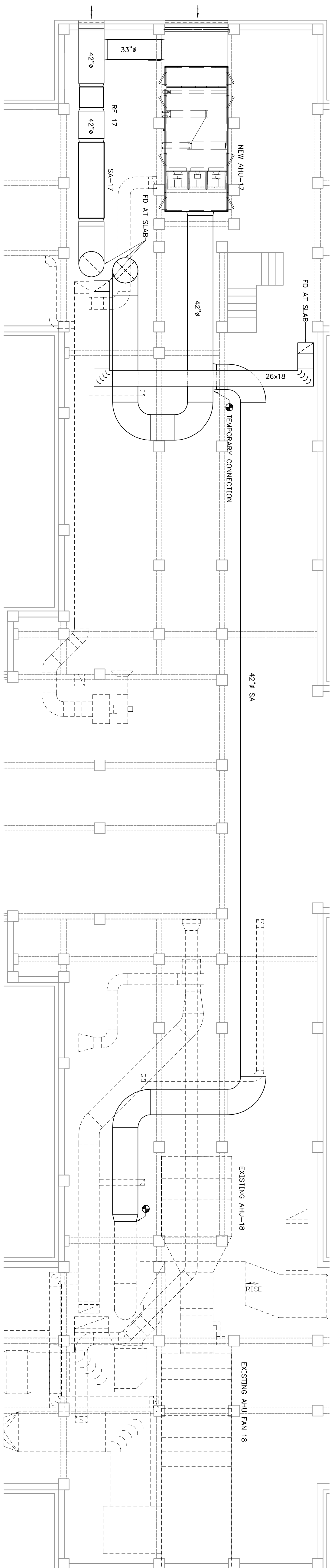
NOTES: PHASE 1

A. INSTALL NEW RETURN/RELIEF FAN RF-17.

B. DEMO EXISTING SUPPLY AIR DUCT AT AHU-17, AND INSTALL TEMPORARY FROM AHU-18 SUPPLY DUCT TO AHU-17 CHASE.



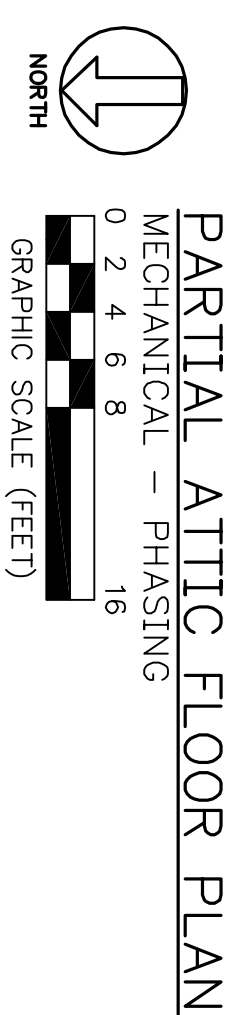
NOTES: PHASE 2



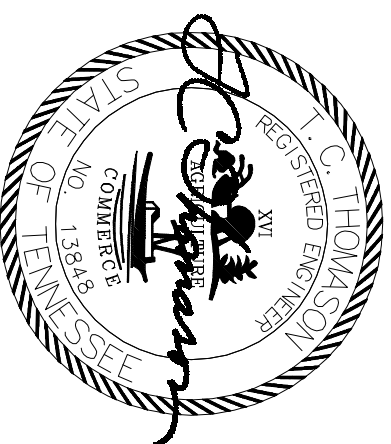
NOTES: PHASE 3



A. INSTALL NEW AHU-17 SUPPLY DUCT AND CONNECT TEMPORARY DUCT FROM AHU-17 TO AHU-18 CHASE.

B. CONNECT NEW RETURN/RELIEF FAN RF-17 TO NEW AHU-17.



CONSTRUCTION DOCUMENTS



 Tennessee Valley Healthcare System 		REPLACE ATTIC AHUS BUILDING 6		Project Title REPLACE ATTIC AHUS BUILDING 6	
Project No. 62848-11-204		Building Number 6		Location IVHS - YORK CAMPUS	
Drawing NO. 6 - M 5		Checked TCT		Drawn SPF	
Approved: ---		Approved: Facility Manager		Approved: Director	
Approved: ---		Approved: ---		Approved: ---	

Veterans Administration