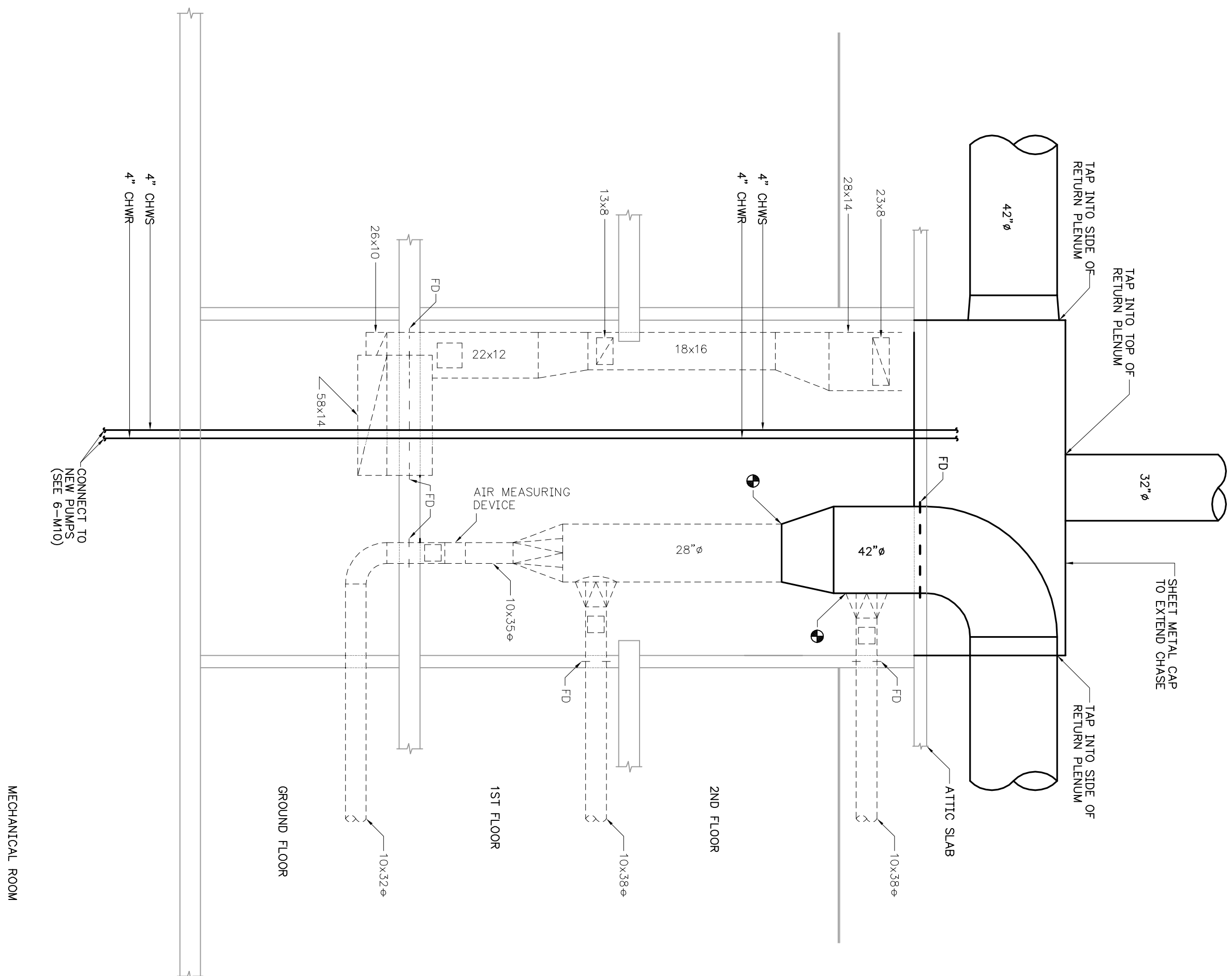
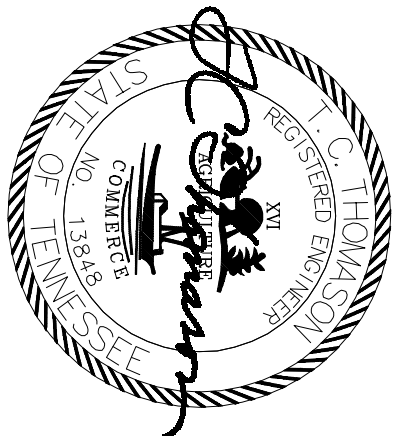


AHU - 17 RISER
MECHANICAL - NEW WORK
0 1 2 3 4 8
GRAPHIC SCALE (FEET)



AHU - 18 RISER
MECHANICAL - NEW WORK
0 1 2 3 4 8
GRAPHIC SCALE (FEET)

CONSTRUCTION DOCUMENTS



Revisions		Date	
<div><div><div><div><div></div><div></div><div></div><div></div><div></div></div><div>T V H S</div><div>N A S H V I L L E</div><div>C A M P U S</div></div><div>Tennessee Valley Healthcare System</div><div><div><div><div></div><div></div><div></div><div></div><div></div></div><div>T V H S</div><div>M U R R E S B O R O</div><div>C A M P U S</div></div></div></div></div>			
TENNESSEE VALLEY HEALTHCARE SYSTEM MURREESBORO CAMPUS		Drawing Title MECHANICAL RISER NEW WORK	
Approved: --		Approved: Facility Manager	
Approved: --		Approved: Director	
Project Title REPLACE ATTIC AHUS BUILDING 6		Project No. 626A4-11-204	
Building Number 6		Checked TC	Drawn SP
Location TWHS -- YORK CAMPUS		DRAWING NO. 6 - M9	
		FILE NAME 1027M2	
		Date 01/20/2012	
Veterans Administration			