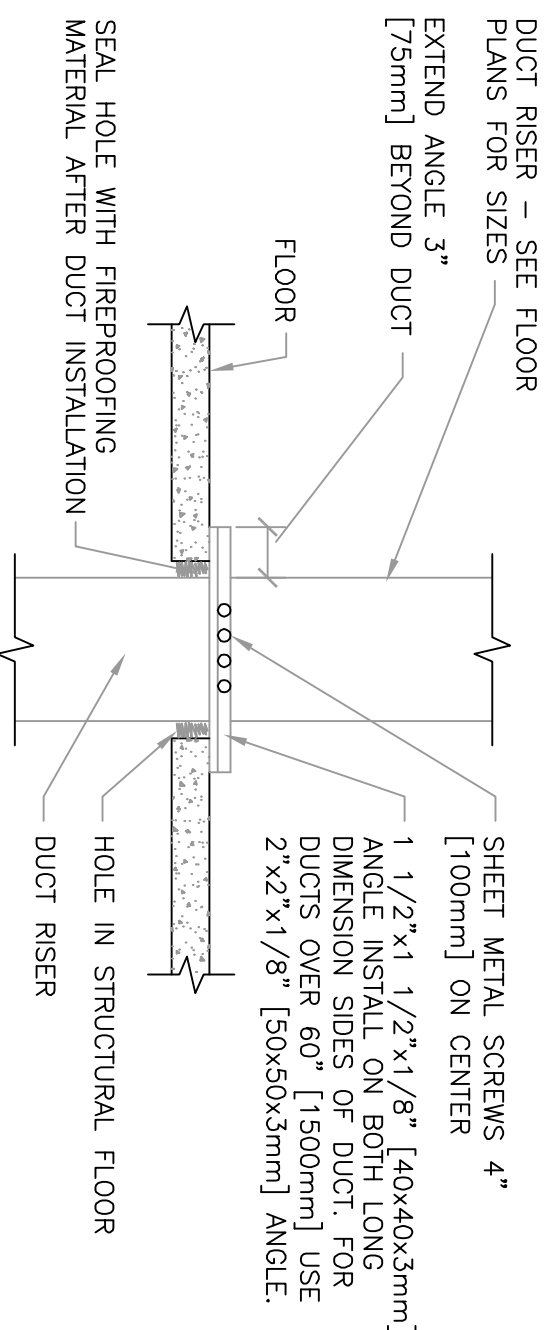
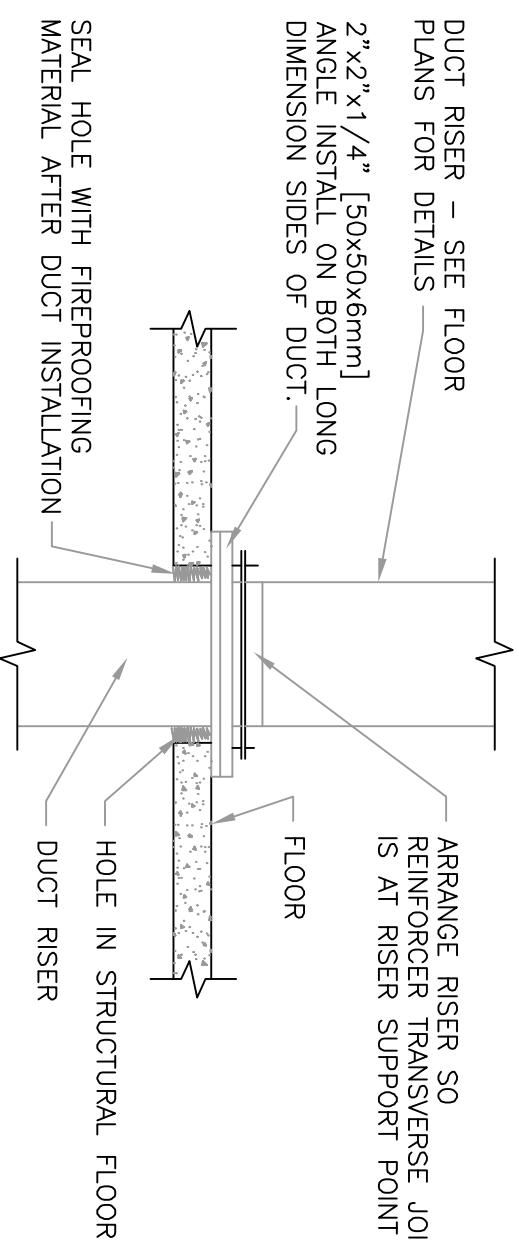
[illegible]

1. ACCESS DOORS SHALL BE GASKETED AND HINGED TO OPEN AGAINST FAN OPERATING PRESSURE TO PREVENT AIR LEAKAGE.
2. MINIMUM ACCESS DOOR WIDTH SHALL BE 24" [600mm]
3. ACCESS DOOR HEIGHT SHALL BE DETERMINED BY UNIT CASING BUT NOT TO EXCEED 6'-0" [1800mm]
4. ACCESS DOORS ON FAN SUCTON SHALL OPEN OUTWARD.
5. ACCESS DOORS ON FAN DISCHARGE SIZE SHALL OPEN INWARD.

2 ACCESS DOOR SWING DETAIL FOR AIR HANDLING UNITS



0.5 INCH WG [125Pa] TO 2 INCHES WG [500Pa] DUCT RISER SUPPORT



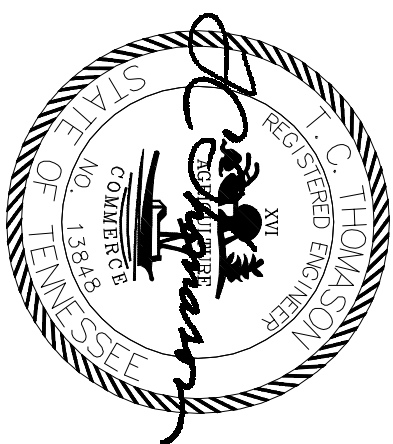
2 INCHES WG [500Pd] TO 4 INCHES WG [1000Pd] DUCT RISER SUPPORT

NOTE:


ALL DUCT WORK RISERS WHICH ARE RUN EXPOSED, SUCH AS THRU ATTIC FLOORS AND FAN ROOM FLOORS SHALL BE PROVIDED WITH A 3" [75mm] HIGH CONCRETE CURB AROUND OPENING FOR DUCT.

1 DUCT RISER SUPPORTS

NTS



CONSTRUCTION DOCUMENTS

		Date 01/20/2012	
 TENNESSEE VALLEY HEALTHCARE SYSTEM MURFREESBORO CAMPUS NASHVILLE CAMPUS		Drawing Title MECHANICAL DETAILS Project Title REPLACE ATTIC AHUS BUILDING 6 Project No. 62844-11-204	
Approved: --- Approved: Facility Manager Building Number 6 Checked TCT Drawn SYP		Approved: Director Location TVHS - YORK CAMPUS DRAWING NO. 6 - M 14 FILE NAME 1027002	
Divisions		Date	