

## DRAWINGS AND DIMENSIONS

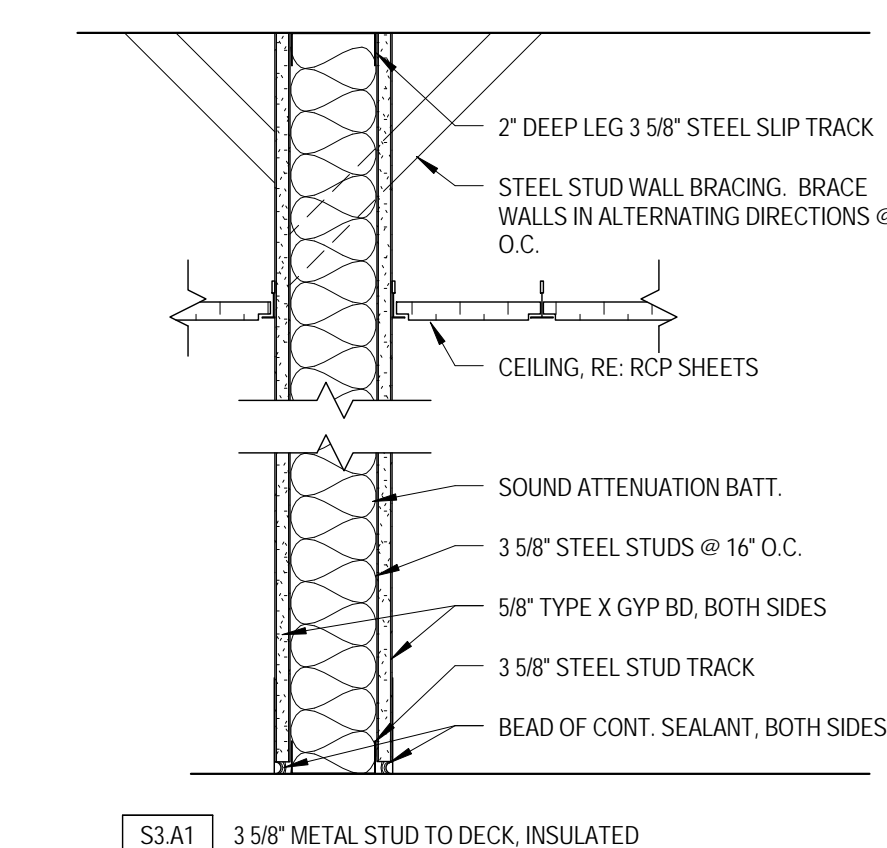
- THE CONTRACT DOCUMENT DRAWINGS HAVE BEEN PREPARED USING REVIT® SOFTWARE IN A MICROSOFT WINDOWS ENVIRONMENT. A BUILDING INFORMATION MODEL (BIM) WAS DEVELOPED SOLELY TO COMMUNICATE THE DESIGN TO THE OWNER AND IS NOT SUITABLE FOR ANY OTHER PURPOSE. FOR EXAMPLE, THE REVIT MODEL IS NOT SUITABLE FOR COST ESTIMATING, SYSTEMS PERFORMANCE, COORDINATION, SCHEDULING, OR FACILITIES MANAGEMENT.
- THESE DOCUMENTS WERE PRODUCED USING THE CONSTRUCTION SPECIFICATIONS INSTITUTE'S UNIFORM DRAWING SYSTEM AND THE NATIONAL CAD STANDARD AS GUIDES.
- ANY INDICATION OF PROJECT LIMITS OR LINES OF DEMARCATION ARE SHOWN FOR THE CONVENIENCE OF THE CONTRACTOR, AND ARE NOT TO BE TAKEN LITERALLY. ACTUAL CONTRACT LIMITS ARE TO BE DETERMINED BY THE CONTRACTOR AND APPROVED BY THE OWNER BEFORE ACTUAL CONSTRUCTION WORK BEGINS.
- DRAWINGS ARE PREPARED USING DIMENSIONS AND PRODUCT CONFIGURATIONS OR DETAILS OF SPECIFIC MANUFACTURERS. DIMENSIONS AND DETAILS FOR SPECIFIC PRODUCTS MAY CHANGE BEFORE THEY ARE ACTUALLY INCORPORATED INTO THE WORK, AND PRODUCTS BY OTHER MANUFACTURERS ARE ALSO ACCEPTABLE. THEREFORE, ACTUAL INSTALLATION DETAILS AND DIMENSIONS MAY DIFFER FROM THOSE SHOWN. CONTRACTOR SHALL VERIFY INSTALLATION REQUIREMENTS FOR ALL PRODUCTS TO BE INCORPORATED IN THE WORK (INCLUDING THICKNESS FOR RECESSED OR SEMI-RECESSED PRODUCTS), AND IS RESPONSIBLE FOR ACCOMMODATING AND COORDINATING CHANGES TO OTHER MATERIALS OR PRODUCTS THAT ARE NECESSARY BECAUSE OF THESE DIFFERENCES.
- THE GENERAL CONTRACTOR IS RESPONSIBLE FOR CHECKING ALL FIELD CONDITIONS AND DIMENSIONS AS THEY RELATE TO THIS PROJECT. SHOULD DISCREPANCIES EXIST BETWEEN THE WORK INDICATED AND ACTUAL FIELD CONDITIONS NOTIFY THE ARCHITECT PRIOR TO PROCEEDING WITH THE WORK.
- DO NOT SCALE THE DRAWINGS. DRAWING SCALES AS INDICATED ARE FOR REFERENCE ONLY AND ARE NOT INTENDED TO ACCURATELY DEPICT ACTUAL OR DESIGNATED CONDITIONS. WRITTEN DIMENSIONS SHALL GOVERN.
- ALL DIMENSIONS INDICATED ARE TO FACES OF FINISH MATERIALS OR COLUMN GRID LINES UNLESS NOTED OTHERWISE. ROUGH OPENINGS SHALL ALLOW FOR SHIM SPACE.
- THE TERM "ALIGN" REFERS TO LOCATING DIFFERENT COMPONENTS OF CONSTRUCTION TO PROVIDE A FLUSH FINISH SURFACE.
- SHOULD DIMENSIONS BE MISSING OR CONFLICTING, NOTIFY ARCHITECT PRIOR TO PROCEEDING WITH RELATED WORK.

## ARCHITECTURAL ABBREVIATIONS

ACOUS	AIR CONDITIONING	EWC	ELECTRIC WATER COOLER	MB	MARKER BOARD	SECT	SECTION
ACUS	ACOUSTICAL	EXH	EXHAUST	MECH	MECHANICAL	SF	SQUARE FOOT
ACT	ACoustical CEILING TILE	EXIST	EXISTING	MEPF	MECHANICAL ELECTRICAL PLUMBING, FIRE PROTECTION (CONDUIT)	SF CMU	SPRINT-FACE CMU
AD	AREA DRAIN	EXP	EXPANSION	MFR	MANUFACTURER	SHR	SHOWER
ADA	AMERICANS WITH DISABILITIES ACT	EXT	EXTERIOR	MH	MANHOLE	SHT	SHEET
ADE	ARCHITECT AND ENGINEERS	FA	FIRE ALARM	MIN	MINIMUM	SHTG	SHOOTING
AFF	ABOVE FINISH FLOOR	FAA	FIRE ALARM	MIR	MIRROR	SL	SLOPE
AFG	ABOVE FINISHED GRADE	FACP	FIRE ALARM ANNUNCIATOR PANEL	MISC	MISCELLANEOUS	SLV	SHORT LEG VERTICAL
AHU	AUTHORITIES HAVING JURISDICTION	FCU	FAN COIL UNIT	MO	MASONRY OPENING	SND	SANITARY NAPKIN DISPOSER
AHU	AIR HANDLING UNIT	FD	FLOOR DRAIN	MSB	MOP SERVICE BASIN	SNV	SANITARY NAPKIN VENDOR
ALT	ALTERNATIVE	FDR	FOUNDATION	MU	MOUNTED	SPEC	SPECIFICATIONS
ALT TRANS	ALTERNATIVE TRANSPORTATION	FE	FIRE EXTINGUISHER	MTL	METAL	SQ	SQUARE
ALUM	ALUMINUM	FEC	FIRE EXTINGUISHER CABINET	N	NORTH	SS	STAINLESS STEEL
ANOD	ANODIZED	FF	FINISH FLOOR	N	NORTH	STC	SOUND TRANSMISSION CLASS
APPROX	APPROXIMATE	FF & E	FURNITURE FIXTURES & EQUIPMENT	NA	NOT APPLICABLE	STD	STANDARD
ARCH	ARCHITECTURAL	FIN	FINISH	NECY	NECESSARY	STL	STEEL
AVG	AVERAGE	FIXT	FIXTURE	NT	NOT IN CONTRACT	STOR	STORAGE
		FL	FLOW LINE	NO	NUMBER	STRUC	STRUCTURAL
BB	BULLETIN BOARD	FLR	FLOOR	NOM	NOMINAL	SUSP	SUSPENDED
BD	BOARD	FLUR	FLOOR CENT	NTS	NOT TO SCALE	SV	SHEET VINYL
BG	BUMPER GUARD	FO	FINISH OPENING	OC	ON CENTER	SYM	SYMMETRICAL
BLDG	BUILDING	FOS	FACE OF STUD	OD	OUTSIDE DIAMETER	SYS	SYSTEM
BLKG	BLOCKING	FR	FIRE RATED	OD	OUTSIDE DIAMETER	T	TREAD
BM	BEAM	FSP	FIRE STANDPIPE	OF	OWNER FURNISHED	T&B	TACKBOARD
BO	BOTTOM OF	FT	FOOT / FEET	OFCI	OWNER FURNISHED CONTRACTOR INSTALLED	T&G	TONGUE AND GROOVE
BRG	BEARING	FTG	FOOTING	OFOI	OWNER FURNISHED OWNER INSTALLED	TBO	TO BE DETERMINED
		FURR	FURRING	OH	OWNER INSTALLED	TD	TO BE DETERMINED
CB	CATCH BASIN	FV	FIRE VALVE CABINET	OPN	OPENING	TEL	TELEPHONE
CBB	CEMENTITIOUS BACKER BOARD	FWC	FABRIC WALL COVERING	OPP	OPPOSITE	TEMP	TEMPERATURE
CER	CERAMIC			ORD	OVERFLOW ROOF DRAIN	TG	TEMPERED GLASS
CF	CUBIC FEET					THRU	THROUGH
CFCI	CONTRACTOR FURNISH CONTRACTOR INSTALL	GA	GAUGE	P	PLASTIC	TID	TOP OF CONCRETE
CG	CORNER GUARD, CEILING GRILLE	GALV	GALVANIZED	PBD	PARTICLE BOARD	TOM	TOP OF MASONRY
C & G	CURB & GUTTER	GB	GENERAL CONTRACTOR	PL	PLATE	TOS	TOP OF STEEL
CIP	CAST IN PLACE	GC	GENERAL CONTRACTOR	PLM	PLASTIC LAMINATE	TOW	TOP OF WALL
CIR	CAST IRON	GDD	GARBAGE DISPOSAL	PLAS	PLASTER	TTD	TOILET TISSUE DISPENSER
CL	CENTERLINE	GFCI	GROUND FAULT CIRCUIT INTERRUPTER	PV	POLYVINYL CHLORIDE	TV	TELEVISION
CLG	CEILING	GL	GALVANIZED IRON	PT	POST-TENSIONED CONCRETE	UNCD	UNDERGROUND
CLM	COLUMN	GLASS	GLASS	PTD	PAPER TOWEL DISPENSER	UL	UNDERWRITERS LABORATORY
CMU	CORRUGATED METAL PIPE	GL BLK	GLASS BLOCK	PVC	PORCELAIN TILE	UNFIN	UNFINISHED
CON	CONCRETE	GLUE LUMI	GLUE LUMINATED WOOD	PVC	PORCELAIN TILE	UNFIN	UNFINISHED
CONC	CONCRETE	GND	GROUND	PT	POST-TENSIONED CONCRETE	UNFIN	UNFINISHED
CONC	CONCRETE	GNT	GROUND	PTD	PAPER TOWEL DISPENSER	UNFIN	UNFINISHED
CONC	CONCRETE	GNT	GROUND	PVC	PORCELAIN TILE	UNFIN	UNFINISHED
CONC	CONCRETE	GNT	GROUND	PVC	PORCELAIN TILE	UNFIN	UNFINISHED
CONC	CONCRETE	GNT	GROUND	PVC	PORCELAIN TILE	UNFIN	UNFINISHED
CONC	CONCRETE	GNT	GROUND	PVC	PORCELAIN TILE	UNFIN	UNFINISHED
CONC	CONCRETE	GNT	GROUND	PVC	PORCELAIN TILE	UNFIN	UNFINISHED
CONC	CONCRETE	GNT	GROUND	PVC	PORCELAIN TILE	UNFIN	UNFINISHED
CONC	CONCRETE	GNT	GROUND	PVC	PORCELAIN TILE	UNFIN	UNFINISHED
CONC	CONCRETE	GNT	GROUND	PVC	PORCELAIN TILE	UNFIN	UNFINISHED
CONC	CONCRETE	GNT	GROUND	PVC	PORCELAIN TILE	UNFIN	UNFINISHED
CONC	CONCRETE	GNT	GROUND	PVC	PORCELAIN TILE	UNFIN	UNFINISHED
CONC	CONCRETE	GNT	GROUND	PVC	PORCELAIN TILE	UNFIN	UNFINISHED
CONC	CONCRETE	GNT	GROUND	PVC	PORCELAIN TILE	UNFIN	UNFINISHED
CONC	CONCRETE	GNT	GROUND	PVC	PORCELAIN TILE	UNFIN	UNFINISHED
CONC	CONCRETE	GNT	GROUND	PVC	PORCELAIN TILE	UNFIN	UNFINISHED
CONC	CONCRETE	GNT	GROUND	PVC	PORCELAIN TILE	UNFIN	UNFINISHED
CONC	CONCRETE	GNT	GROUND	PVC	PORCELAIN TILE	UNFIN	UNFINISHED
CONC	CONCRETE	GNT	GROUND	PVC	PORCELAIN TILE	UNFIN	UNFINISHED
CONC	CONCRETE	GNT	GROUND	PVC	PORCELAIN TILE	UNFIN	UNFINISHED
CONC	CONCRETE	GNT	GROUND	PVC	PORCELAIN TILE	UNFIN	UNFINISHED
CONC	CONCRETE	GNT	GROUND	PVC	PORCELAIN TILE	UNFIN	UNFINISHED
CONC	CONCRETE	GNT	GROUND	PVC	PORCELAIN TILE	UNFIN	UNFINISHED
CONC	CONCRETE	GNT	GROUND	PVC	PORCELAIN TILE	UNFIN	UNFINISHED
CONC	CONCRETE	GNT	GROUND	PVC	PORCELAIN TILE	UNFIN	UNFINISHED
CONC	CONCRETE	GNT	GROUND	PVC	PORCELAIN TILE	UNFIN	UNFINISHED
CONC	CONCRETE	GNT	GROUND	PVC	PORCELAIN TILE	UNFIN	UNFINISHED
CONC	CONCRETE	GNT	GROUND	PVC	PORCELAIN TILE	UNFIN	UNFINISHED
CONC	CONCRETE	GNT	GROUND	PVC	PORCELAIN TILE	UNFIN	UNFINISHED
CONC	CONCRETE	GNT	GROUND	PVC	PORCELAIN TILE	UNFIN	UNFINISHED
CONC	CONCRETE	GNT	GROUND	PVC	PORCELAIN TILE	UNFIN	UNFINISHED
CONC	CONCRETE	GNT	GROUND	PVC	PORCELAIN TILE	UNFIN	UNFINISHED
CONC	CONCRETE	GNT	GROUND	PVC	PORCELAIN TILE	UNFIN	UNFINISHED
CONC	CONCRETE	GNT	GROUND	PVC	PORCELAIN TILE	UNFIN	UNFINISHED
CONC	CONCRETE	GNT	GROUND	PVC	PORCELAIN TILE	UNFIN	UNFINISHED
CONC	CONCRETE	GNT	GROUND	PVC	PORCELAIN TILE	UNFIN	UNFINISHED
CONC	CONCRETE	GNT	GROUND	PVC	PORCELAIN TILE	UNFIN	UNFINISHED
CONC	CONCRETE	GNT	GROUND	PVC	PORCELAIN TILE	UNFIN	UNFINISHED
CONC	CONCRETE	GNT	GROUND	PVC	PORCELAIN TILE	UNFIN	UNFINISHED
CONC	CONCRETE	GNT	GROUND	PVC	PORCELAIN TILE	UNFIN	UNFINISHED
CONC	CONCRETE	GNT	GROUND	PVC	PORCELAIN TILE	UNFIN	UNFINISHED
CONC	CONCRETE	GNT	GROUND	PVC	PORCELAIN TILE	UNFIN	UNFINISHED
CONC	CONCRETE	GNT	GROUND	PVC	PORCELAIN TILE	UNFIN	UNFINISHED
CONC	CONCRETE	GNT	GROUND	PVC	PORCELAIN TILE	UNFIN	UNFINISHED
CONC	CONCRETE	GNT	GROUND	PVC	PORCELAIN TILE	UNFIN	UNFINISHED
CONC	CONCRETE	GNT	GROUND	PVC	PORCELAIN TILE	UNFIN	UNFINISHED
CONC	CONCRETE	GNT	GROUND	PVC	PORCELAIN TILE	UNFIN	UNFINISHED
CONC	CONCRETE						

## 2 Maneuvering Clearances at Door

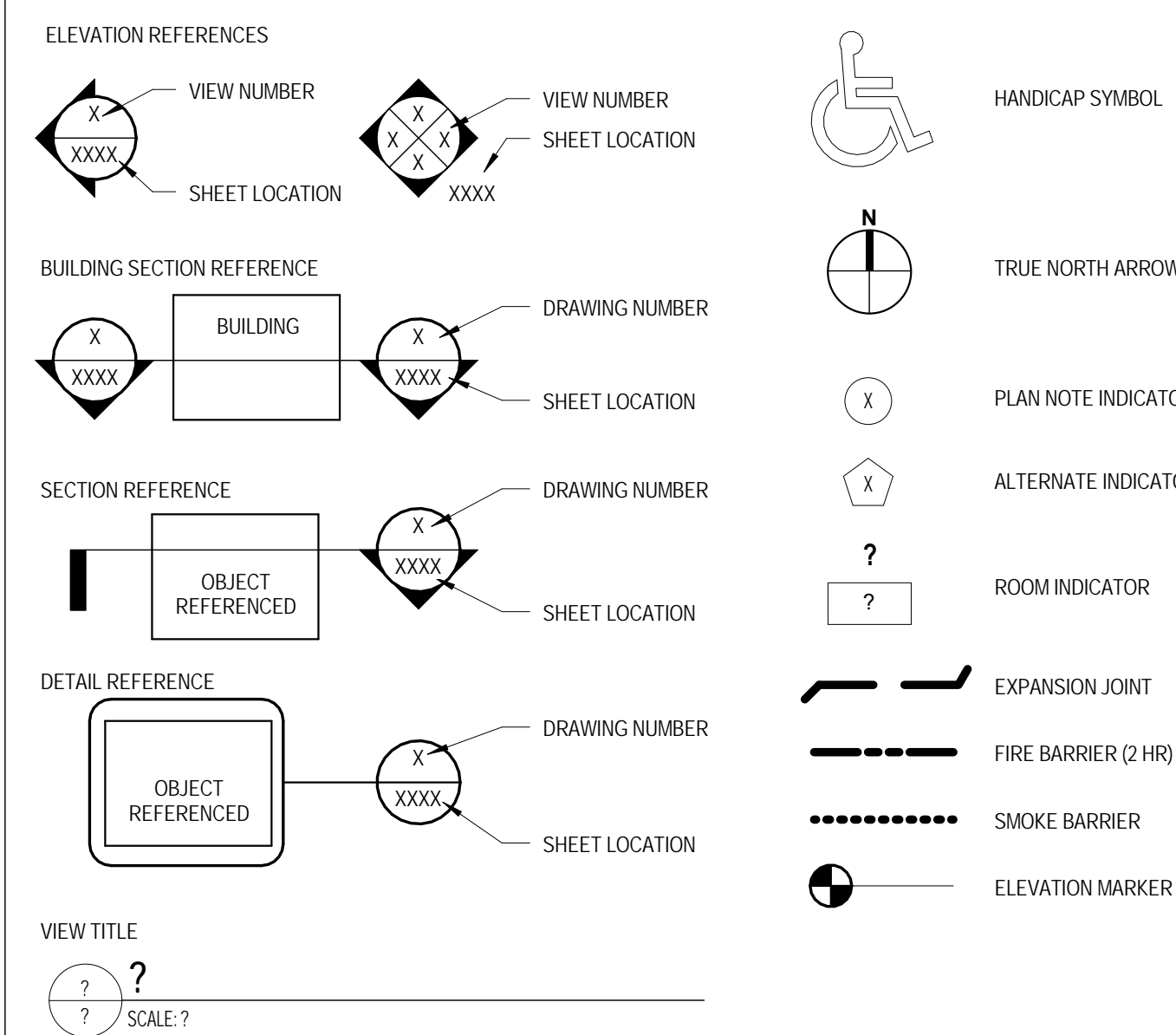
AS001 SCALE: 1/2" = 1'-0"



## 4 Wall Types

AS001 SCALE: 1/12\"/&gt;

## ARCHITECTURAL SYMBOLS



## ALTERNATES

- OMIT FIRE SUPPRESSION MODIFICATION:  
OMIT ALL WORK INDICATED AND SPECIFIED FOR THE FIRE SUPPRESSION SYSTEM IN THE "SECONDARY" ELEVATOR MECHANICAL SPACE FOR P1-4, S5-4, AND S6-4, INDICATED ON 3/AS102 AND 1/10101. ALTERNATE NO. 1'S DESIGN INTENT IS FOR UNUSUED FIRE SUPPRESSION PIPING TO REMAIN IN PLACE AND CAPPED. REFERENCE OTHER SPECIFICATIONS FOR APPLICABLE REQUIREMENTS.
- REUSE GEARLESS MACHINES FOR ELEVATORS P1-P4, S5-S4, P7-P9:  
OMIT THE ENGINEERING, FURNISHING AND INSTALLATION OF NEW MOTORS AND REMOVAL OF EXISTING MOTORS FROM ELEVATORS P1-4, S5-4, AND P7-9. IN LIEU OF BASE BID, REUSE THE EXISTING GEARLESS TRACTION HOIST MACHINES. PROVIDE ALTERNATE ACCESSORY EQUIPMENT THAT SHALL INTERFACE WITH EXISTING MACHINE, AND PERFORM MAINTENANCE, REFURBISHING AND SAFETY WORK AS SPECIFIED IN DIVISION 14 SPECIFICATIONS SECTIONS NOTED ALTERNATE NO. 1. ACCESSORY EQUIPMENT IS TO INCLUDE BUT IS NOT LIMITED TO: REGENERATIVE DRIVES, CABLES, SHEAVES AND PROCESSORS.
- OMIT WORK FOR ELEVATORS P7-P9:  
OMIT ALL WORK INDICATED AND SPECIFIED WITH PASSENGER ELEVATORS 7, 8 AND 9 (ALSO INDICATED AS P7-P9) WITH THE EXCEPTION OF DATA TECHNOLOGY AND ELECTRICAL CONNECTIONS TO THE LOCAL AREA NETWORK (LAN) IN ROOMS D-202 AND E-104, CALL SYSTEM, AND FIRE PROTECTION/ALARM SYSTEM. REFERENCE DRAWINGS FOR GRAPHICAL EXTENTS OF ALTERNATE NO. 3. REFERENCE SPECIFICATIONS FOR APPLICABLE REQUIREMENTS.

## ARCHITECT/ENGINEERS:

**PROJECT LEAD**  
Architect, Structural Engineer, Civil Engineer

**GUIDON DESIGN**

905 N. CAPITOL AVE. SUITE 100 INDIANAPOLIS, IN 46204  
317.880.6388 WWW.GUIDONDESIGN.COM

SUSTAINABLE ARCHITECTURE + ENGINEERING

**MEP Engineer**  
MILLER-REMICK LLC.

1010 Kings Highway South  
Cherry Hill, NJ 08034

Tele: 856-429-4000

**Elevator Design**  
STUARD & ASSOCIATES, INC.

2500 Lincoln Hill Road  
Martinsville, IN 46151

Tele: 765-352-1975

## BID DOCUMENTS

Drawing Title  
**ARCHITECTURAL SYMBOLS AND ABBREVIATIONS**

Approved for Design Concept:  
**FACILITY MANAGEMENT DIVISION MANAGER**

Project Title  
**UPGRADE ELEVATOR CONTROLS**

Location  
**ROBLEY REX VA MEDICAL CENTER**

Date  
2015/09/25

Checked By:  
STW

Drawn By:  
LAL

Project Number  
**15.1035**

Building Number  
**#1**

Drawing Number  
**AS001**

OFFICE OF  
FACILITIES  
MANAGEMENT

VA Project Number  
**603-15-101**

VA U.S. Department of Veterans Affairs