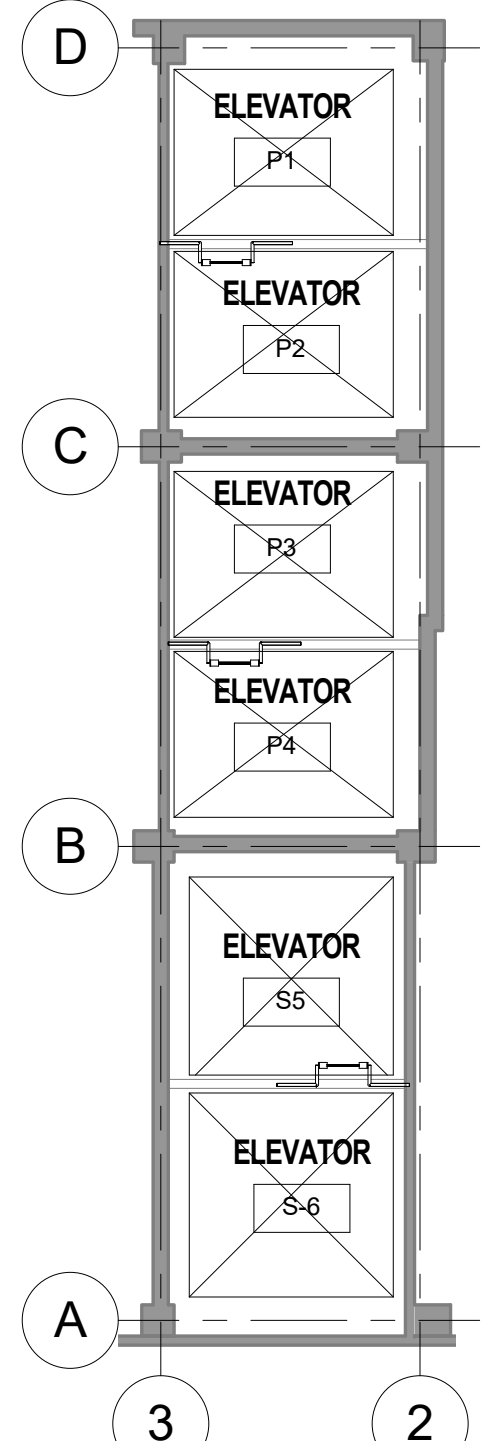
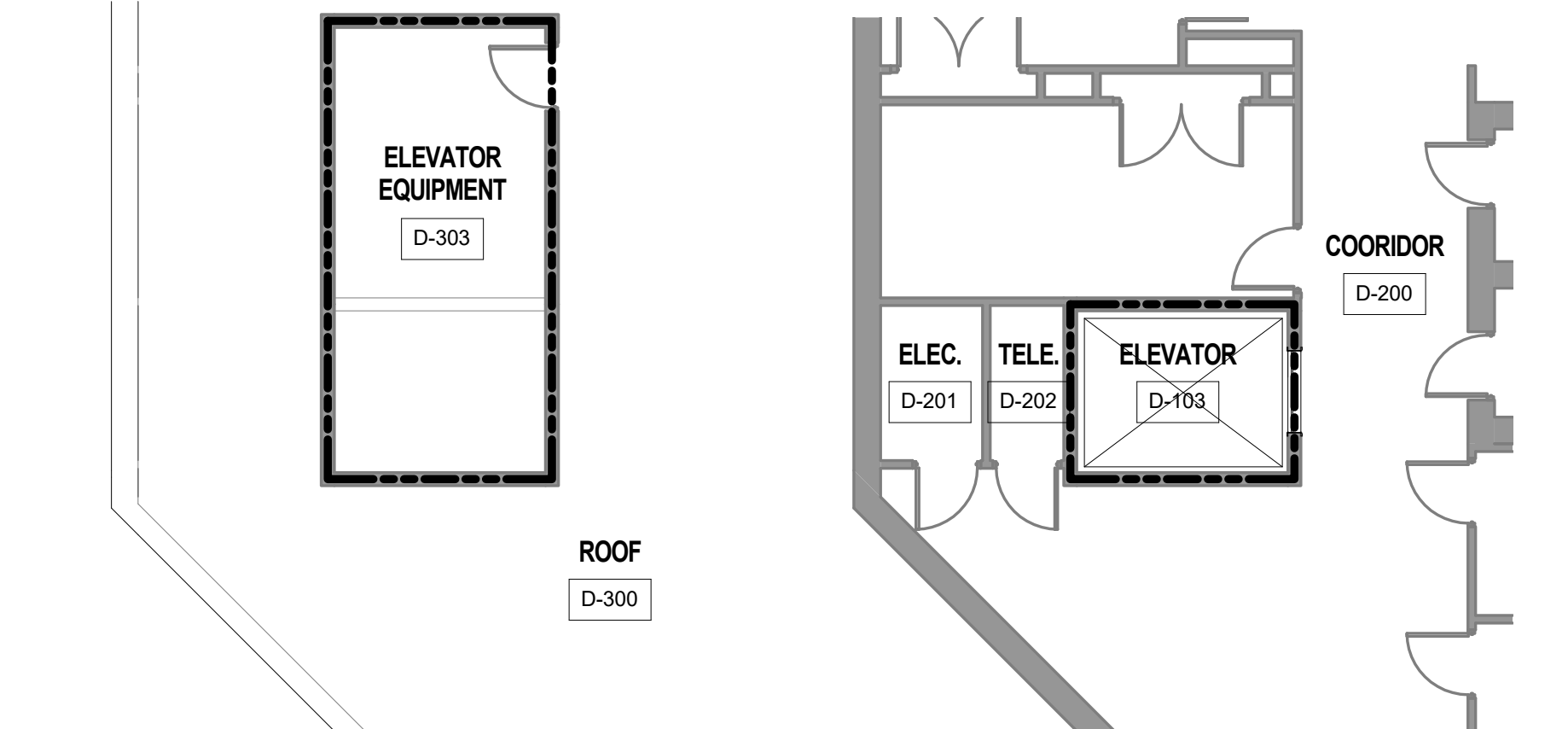


ELEVATOR EQUIPMENT SCHEDULE													COMMENTS
EQUIPMENT	P1	P2	P3	P4	S5	S6	P7	P8	P9	P10	P12		
AUDIO VOICE SYSTEM	N/A	N/A	N/A	ETR	NEW	NEW	NEW	NEW	NEW	ETR	ETR		ADA COMPLIANT
AUTO DIAL TELEPHONE SYSTEM	ETR	ETR	ETR	ETR	NEW	NEW	NEW	NEW	NEW	ETR	ETR		
AUXILIARY POWER OPERATION	ETR	ETR	ETR	ETR	ETR	ETR	ETR	ETR	ETR	ETR	ETR		
CAR POSITION INDICATOR	ETR	ETR	ETR	ETR	NEW	NEW	NEW	NEW	NEW	ETR	ETR		
CROSSHEAD DATA PLATE AND CODE DATA PLATE	NEW	NEW	NEW	NEW	NEW	NEW	NEW	NEW	NEW	ETR	ETR		
MACHINE ROOM MONITOR (CCTV) GROUP OPERATION	ETR	ETR	ETR	ETR	NEW	NEW	NEW	NEW	NEW	ETR	ETR		
MICROPROCESSOR CONTROL SYSTEM PROGRAM	NEW	NEW	NEW	NEW	NEW	NEW	NEW	NEW	NEW	UPDATE	UPDATE		INTERFACE WITH NEW MOTION CONTROL ENGINEERING MONITOR SYSTEM
POWER SUPPLY	ETR *	ETR *	ETR *	ETR *	ETR	ETR	ETR	ETR	ETR	ETR	ETR		PROVIDE SURGE SUPPRESSORS ON DC MOTORS. REFERENCE SPECS AND ALTERNATE *1
VVVF AC MOTOR CONTROL	NEW	NEW	NEW	NEW	NEW	NEW	NEW	NEW	NEW	ETR	ETR		ALTERNATE NO 1 - PROVIDE VVVF DC MOTOR CONTROL
ASCENDING CAR OVERSPEED PROTECTION	NEW	NEW	NEW	NEW	NEW	NEW	NEW	NEW	NEW	ETR	ETR		
CAR AND COUNTERWEIGHT BUFFERS	ETR	ETR	ETR	ETR	ETR	ETR	ETR	ETR	ETR	ETR	ETR		
CAR AND COUNTERWEIGHT ROLLER	NEW	NEW	NEW	NEW	NEW	NEW	NEW	NEW	NEW	ETR	ETR		
CAR LEVELING DEVICE	NEW	NEW	NEW	NEW	NEW	NEW	NEW	NEW	NEW	ETR	ETR		
CAR SAFETY DEVICE	ETR	ETR	ETR	ETR	ETR	ETR	ETR	ETR	ETR	ETR	ETR		
CONDUIT AND WIRING	ADJUST	ADJUST	ADJUST	ADJUST	REFURBISH	REFURBISH	ETR	ETR	ETR	ETR	ETR		
COUNTERWEIGHTS	NEW	NEW	NEW	NEW	NEW	NEW	NEW	NEW	NEW	ETR	ETR		
ELECTRIC INTERLOCKS	NEW	NEW	NEW	NEW	NEW	NEW	NEW	NEW	NEW	ETR	ETR		
GUIDE RAILS, SUPPORTS AND FASTENINGS	ETR	ETR	ETR	ETR	ETR	ETR	ETR	ETR	ETR	ETR	ETR		
HOIST ROPE COMPENSATION	ETR	ETR	ETR	ETR	REFURBISH	REFURBISH	ETR	ETR	ETR	ETR	ETR		
HOIST ROPES	ETR	ETR	ETR	ETR	REFURBISH	REFURBISH	NEW	NEW	NEW	ETR	ETR		
NORMAL AND FINAL TERMINAL STOPPING DEVICES	ETR	ETR	ETR	ETR	ETR	ETR	ETR	ETR	ETR	ETR	ETR		
TRAVELING CABLES	NEW	NEW	NEW	NEW	NEW	NEW	NEW	NEW	NEW	ETR	ETR		PROVIDE 5 PAIR SHIELDED WIRES FOR CARD READER, 2 RG-6U COAXIAL CCTV CABLES, AND 2 PAIR 14 GAUGE WIRES FOR CCTV POWER AS NEEDED
WORKMAN'S LIGHTS AND OUTLETS	NEW	NEW	NEW	NEW	NEW	NEW	NEW	NEW	NEW	ETR	ETR		
AUXILIARY CAR OPERATING PANEL	ETR	ETR	ETR	ETR	ETR	ETR	ETR	ETR	ETR	ETR	ETR		NEW WIRING TO ALL DEVICES ON CAR ENCLOSURE. NEW CAR LED LIGHTING
CAR ENCLOSURE	ETR	ETR	ETR	ETR	ETR	ETR	ETR	ETR	ETR	ETR	ETR		
CAR FRAME - PASSENGER/SERVICE ELEVATORS	ETR	ETR	ETR	ETR	ETR	ETR	ETR	ETR	ETR	ETR	ETR		
CAR PLATFORM - PASSENGER/SERVICE ELEVATOR	ETR	ETR	ETR	ETR	ETR	ETR	ETR	ETR	ETR	ETR	ETR		
EMERGENCY STOP SWITCHES	NEW	NEW	NEW	NEW	NEW	NEW	NEW	NEW	NEW	ETR	ETR		NEW STOP SWITCH IN MACHINE ROOM FOR P1-4
FIREFIGHTERS SERVICE	ETR	ETR	ETR	ETR	ETR	ETR	ETR	ETR	ETR	ETR	ETR		UTILIZE THE FED-K1 KEY
MAIN CAR OPERATING PANEL	NEW	NEW	NEW	NEW	NEW	NEW	NEW	NEW	NEW	ETR	ETR		
MEDICAL EMERGENCY SERVICE	ETR	ETR	ETR	ETR	N/A	N/A	NEW	NEW	NEW	ETR	ETR		
TOP-OF-THE-CAR OPERATING DEVICE	REUSE	REUSE	REUSE	REUSE	REUSE	REUSE	REUSE	REUSE	REUSE	ETR	ETR		
CONDUCTORS	ETR	ETR	ETR	ETR	NEW	NEW	NEW	NEW	NEW	ETR	ETR		
ELEVATOR MACHINE BEAMS	ETR	ETR	ETR	ETR	ETR	ETR	ETR	ETR	ETR	ETR	ETR		
GEARLESS MACHINE	NEW	NEW	NEW	NEW	NEW	NEW	NEW	NEW	NEW	ETR	ETR		ALTERNATE NO 1 - OMIT NEW MACHINES. REFURBISH IN PLACE FOR P1-4, S5-6, AND P7-9
GOVERNOR ROPE	NEW	NEW	NEW	NEW	NEW	NEW	NEW	NEW	NEW	ETR	ETR		
LOAD WEIGHING	ETR	ETR	ETR	ETR	ETR	ETR	ETR	ETR	ETR	ETR	ETR		
SHEAVES	ETR	ETR	NEW	ETR	ETR	ETR	ETR	ETR	ETR	ETR	ETR		NEW BEARING WORK ON P3
SPEED GOVERNOR	REFURBISH	REFURBISH	REFURBISH	REFURBISH	REFURBISH	REFURBISH	REFURBISH	REFURBISH	REFURBISH	ETR	ETR		
CORRIDOR OPERATING DEVICE FACEPLATES	ETR	ETR	ETR	ETR	NEW	NEW	NEW	NEW	NEW	ETR	ETR		
CORRIDOR OPERATING DEVICES FOR PASSENGER/SERVICE ELEVATOR	ETR	ETR	ETR	ETR	ETR	ETR	ETR	ETR	ETR	ETR	ETR		REUSE LOBBY POSITION INDICATOR, DIRECTION INDICATORS, AND LOBBY PANELS. REPLACE BULBS WITH LED. UTILIZE SWING MODE WITH P7-9
DIGITAL CORRIDOR LANTERN POSITION INDICATOR	ETR	ETR	ETR	ETR	ETR	ETR	ETR	ETR	ETR	ETR	ETR		REPLACE EXISTING BULBS WITH LED
HOISTWAY ACCESS SWITCHES	ETR	ETR	ETR	ETR	NEW	NEW	NEW	NEW	NEW	ETR	ETR		USE ONLY EPCC 2 CYLINDERS
HOISTWAY DOOR HANGERS, PASSENGER ELEVATORS	ETR	ETR	ETR	ETR	N/A	N/A	NEW	NEW	NEW	ETR	ETR		P7-9 NEW AT ALL FLOORS
HOISTWAY DOOR HANGERS, SERVICE ELEVATORS	N/A	N/A	N/A	N/A	NEW	NEW	N/A	N/A	N/A	ETR	ETR		NEW AT ALL FLOORS
HOISTWAY ENTRANCES, PASSENGER ELEVATORS	ETR	ETR	ETR	ETR	N/A	N/A	ETR	ETR	ETR	ETR	ETR		
HOISTWAY ENTRANCES, SERVICE ELEVATORS	N/A	N/A	N/A	N/A	ETR	ETR	N/A	N/A	N/A	ETR	ETR		NEW HOISTWAY DOORS AT BASEMENT AND 1ST FLOOR ONLY
POWER DOOR OPERATORS	NEW	NEW	NEW	NEW	NEW	NEW	NEW	NEW	NEW	ETR	ETR		HEAVY DUTY WITH ANTI-NUISANCE FEATURE
REGENERATIVE DRIVE	NEW	NEW	NEW	NEW	NEW	NEW	NEW	NEW	NEW	N/A	N/A		COORDINATE WITH DRIVES AND CONTROLLERS

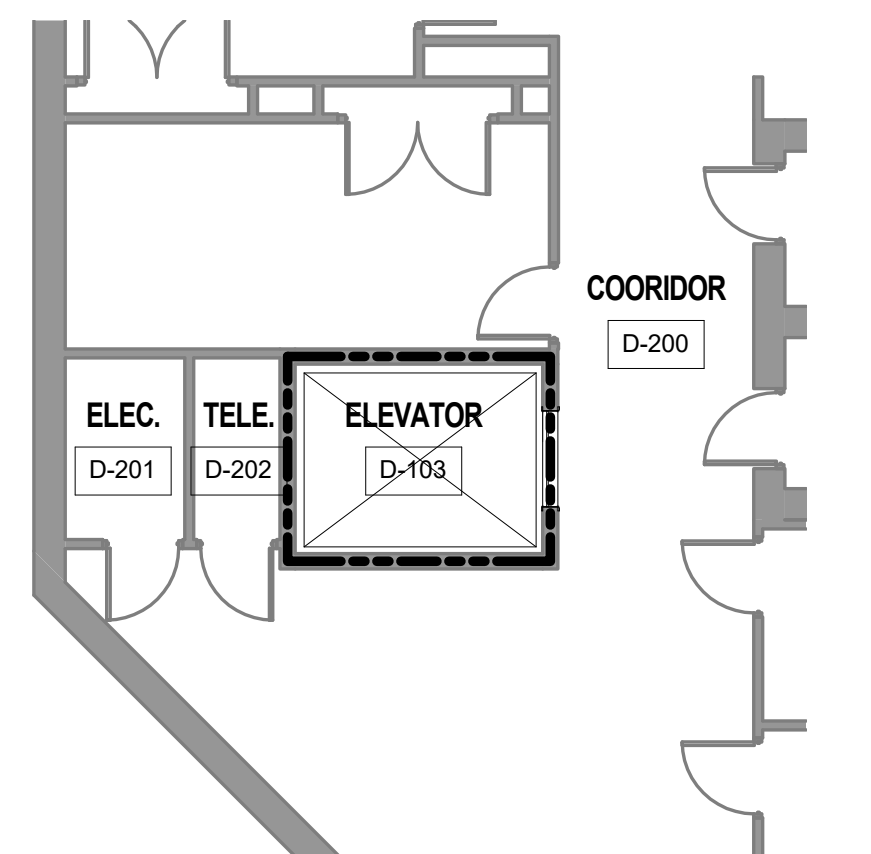
1. REFER TO SPECIFICATION SECTIONS "14 21 10 ELECTRIC TRACTION PASSENGER ELEVATORS P1-4", "14 21 20 ELECTRIC TRACTION PASSENGER ELEVATORS P7-9", "14 21 30 ELECTRIC TRACTION SERVICE ELEVATORS S5-6", AND "14 21 90 PASSENGER ELEVATORS DATA CONNECTION P10-12". THIS EQUIPMENT SCHEDULE IS SECONDARY TO SPECIFICATIONS. ANY DISCRENCIES IN INFORMATION BETWEEN THIS SCHEDULE AND SPECIFICATIONS, SHOULD FOLLOW SPECIFICATIONS REQUIREMENTS.



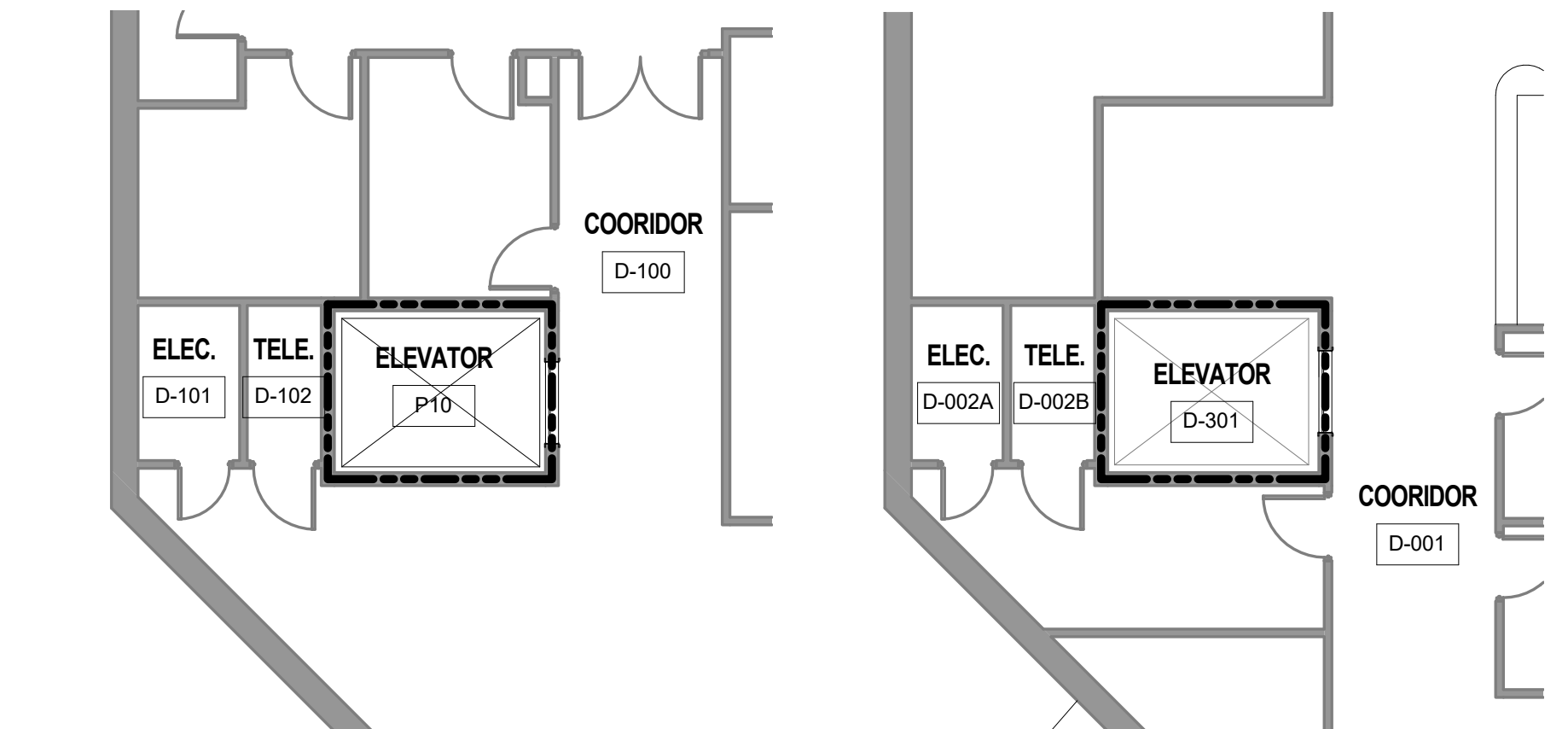
ELEVATORS P1-4 & S5-6 - PIT PLAN
AS102 / SCALE: 1/8" = 1'-0"



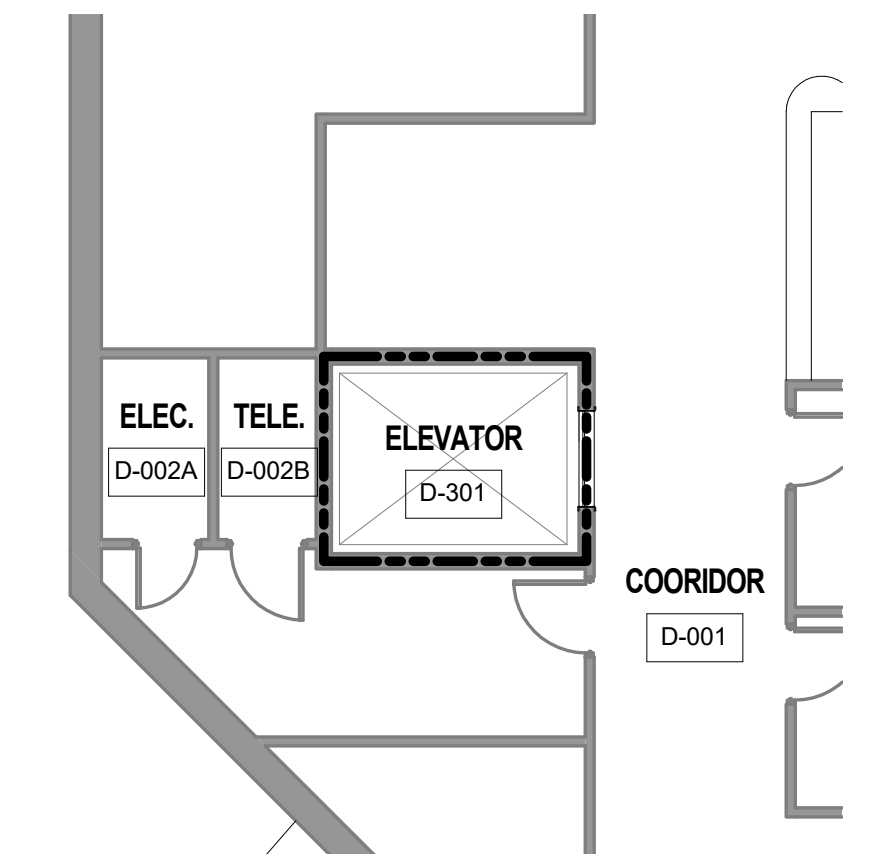
ELEVATORS P10 - LEVEL 3 ROOF PLAN
AS102 / SCALE: 1/8" = 1'-0"



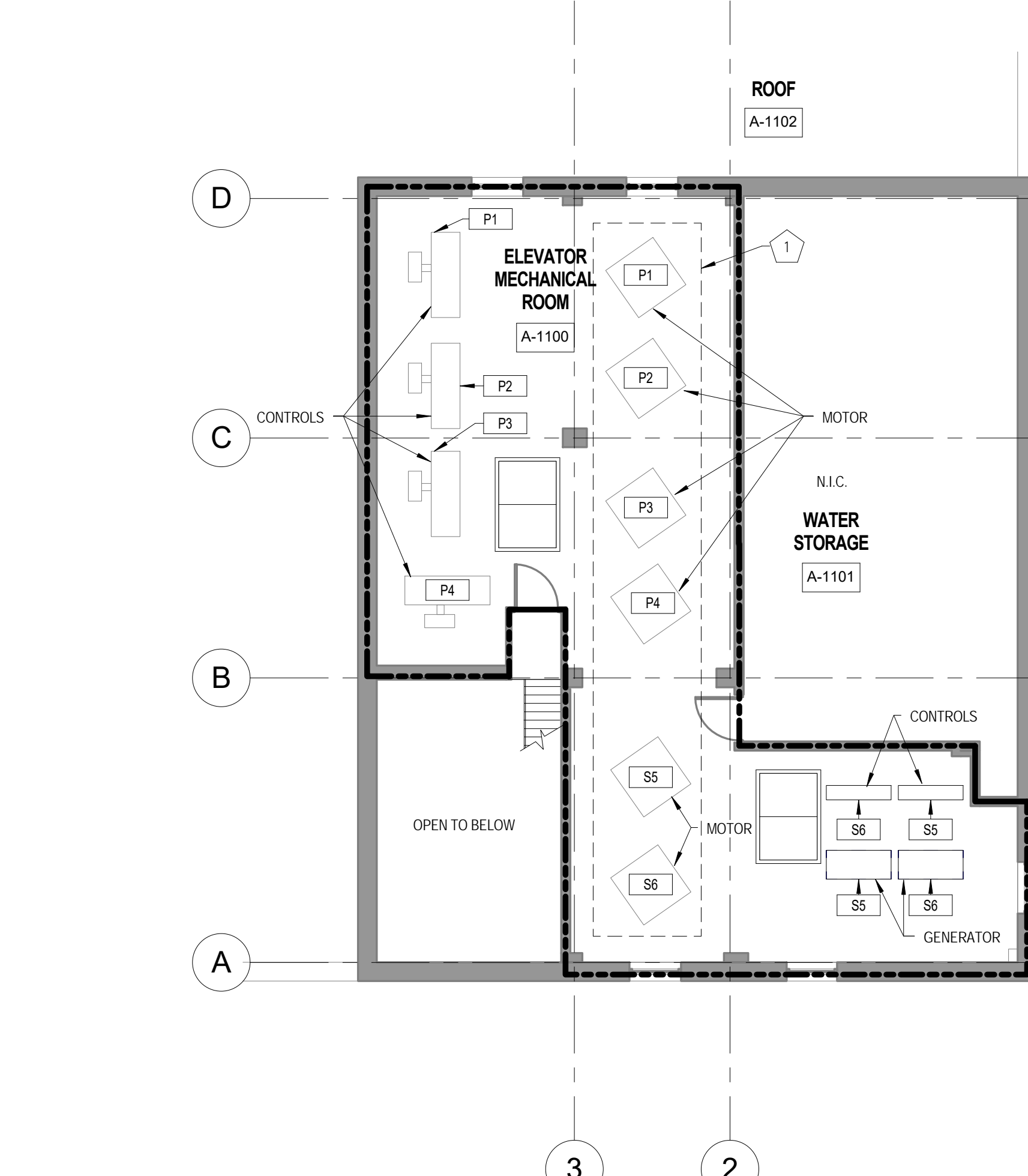
ELEVATORS P10 - LEVEL 2 FLOOR PLAN
AS102 / SCALE: 1/8" = 1'-0"



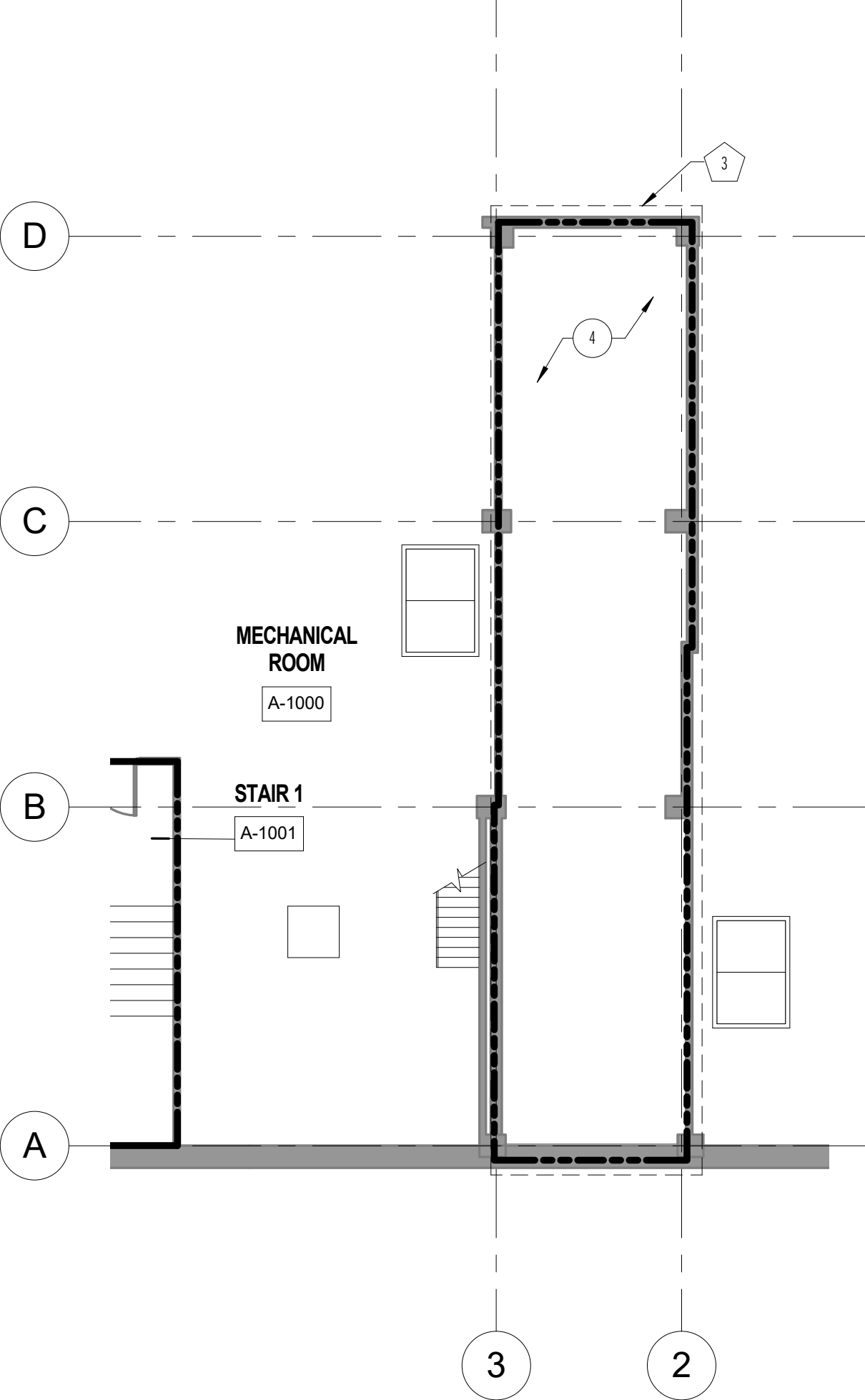
ELEVATORS P10 - LEVEL 1 FLOOR PLAN
AS102 / SCALE: 1/8" = 1'-0"



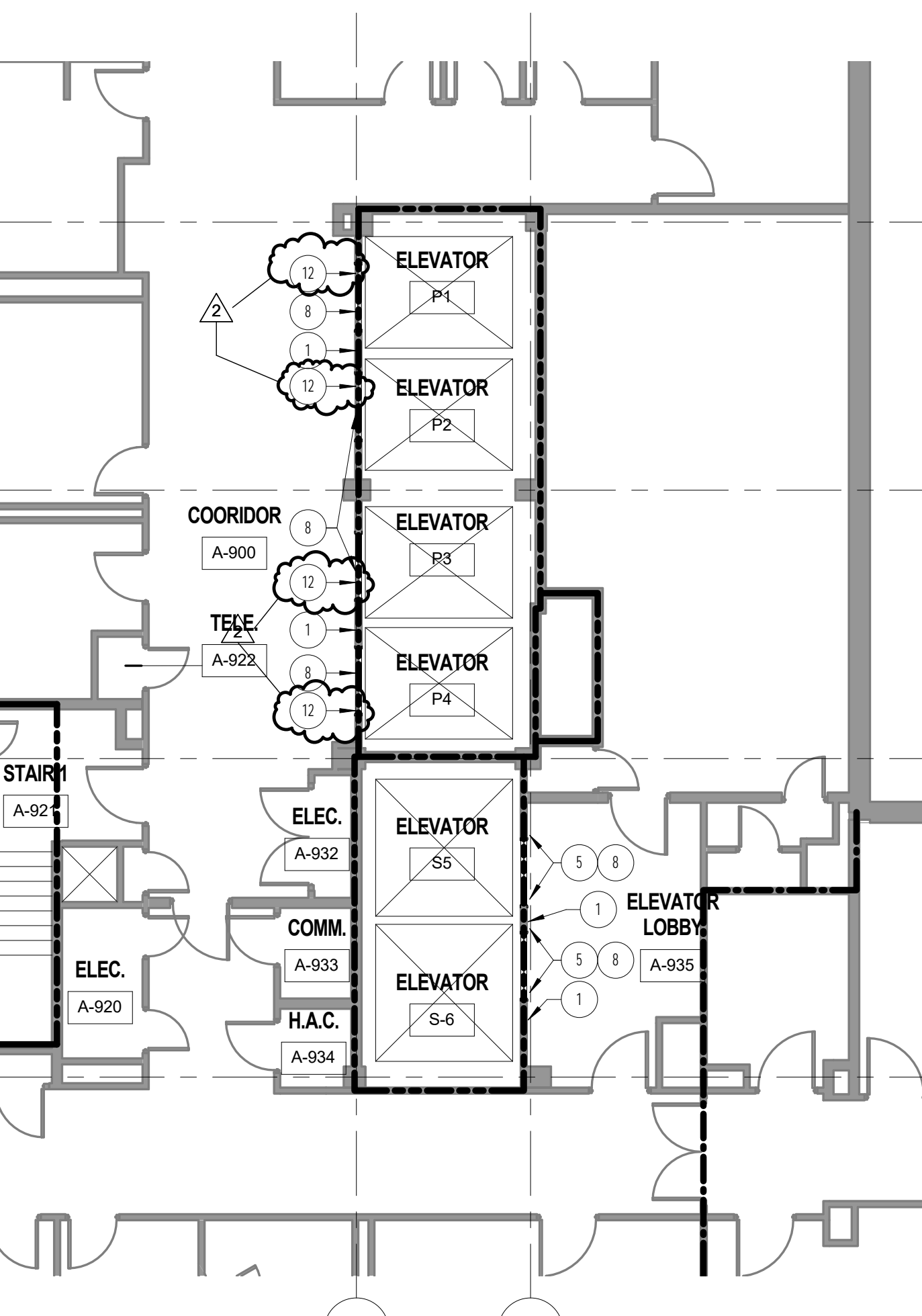
ELEVATORS P10 - LEVEL 0 FLOOR PLAN
AS102 / SCALE: 1/8" = 1'-0"



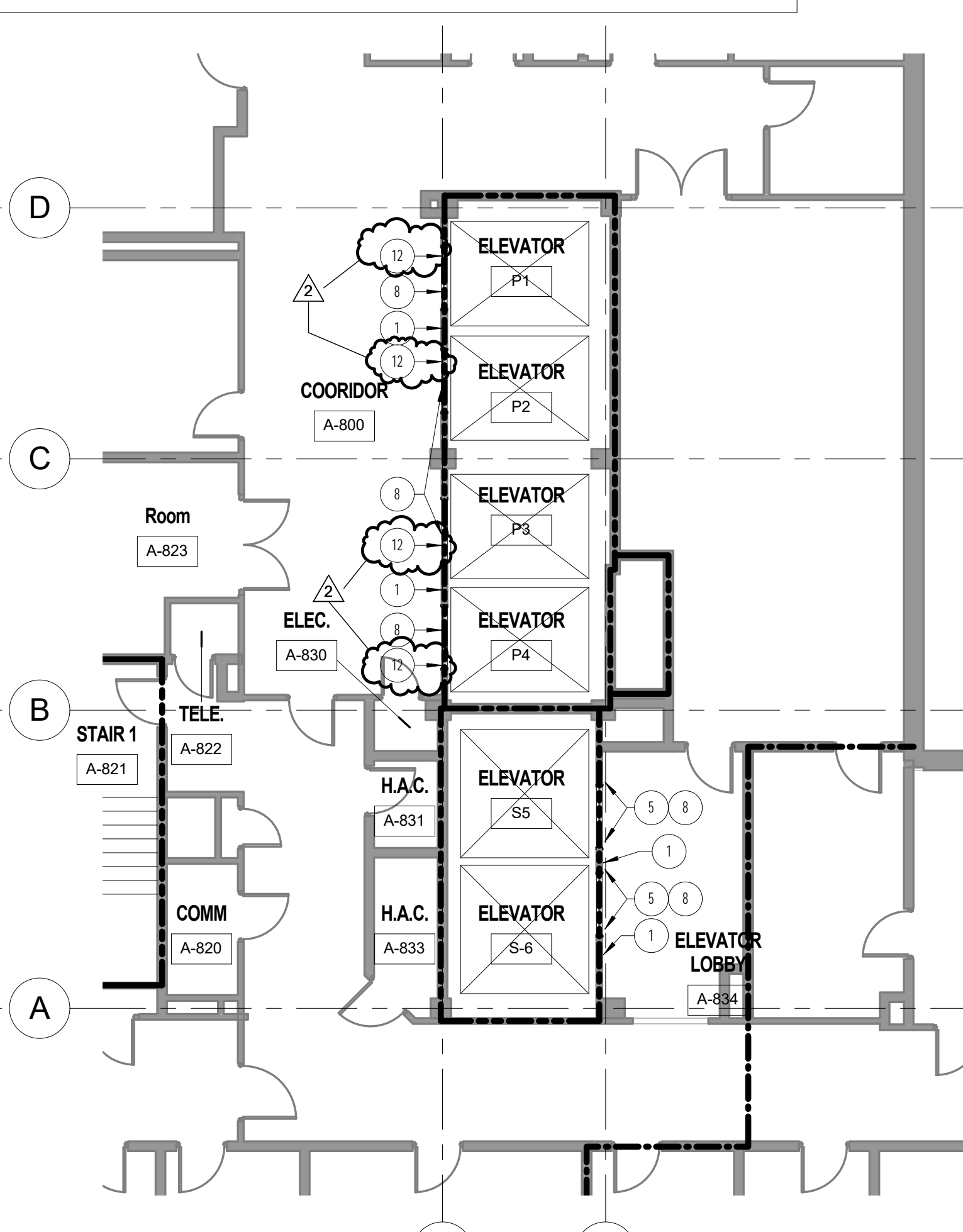
ELEVATORS P1-4 & S5-6 - LEVEL 11 FLOOR PLAN
AS102 / SCALE: 1/8" = 1'-0"



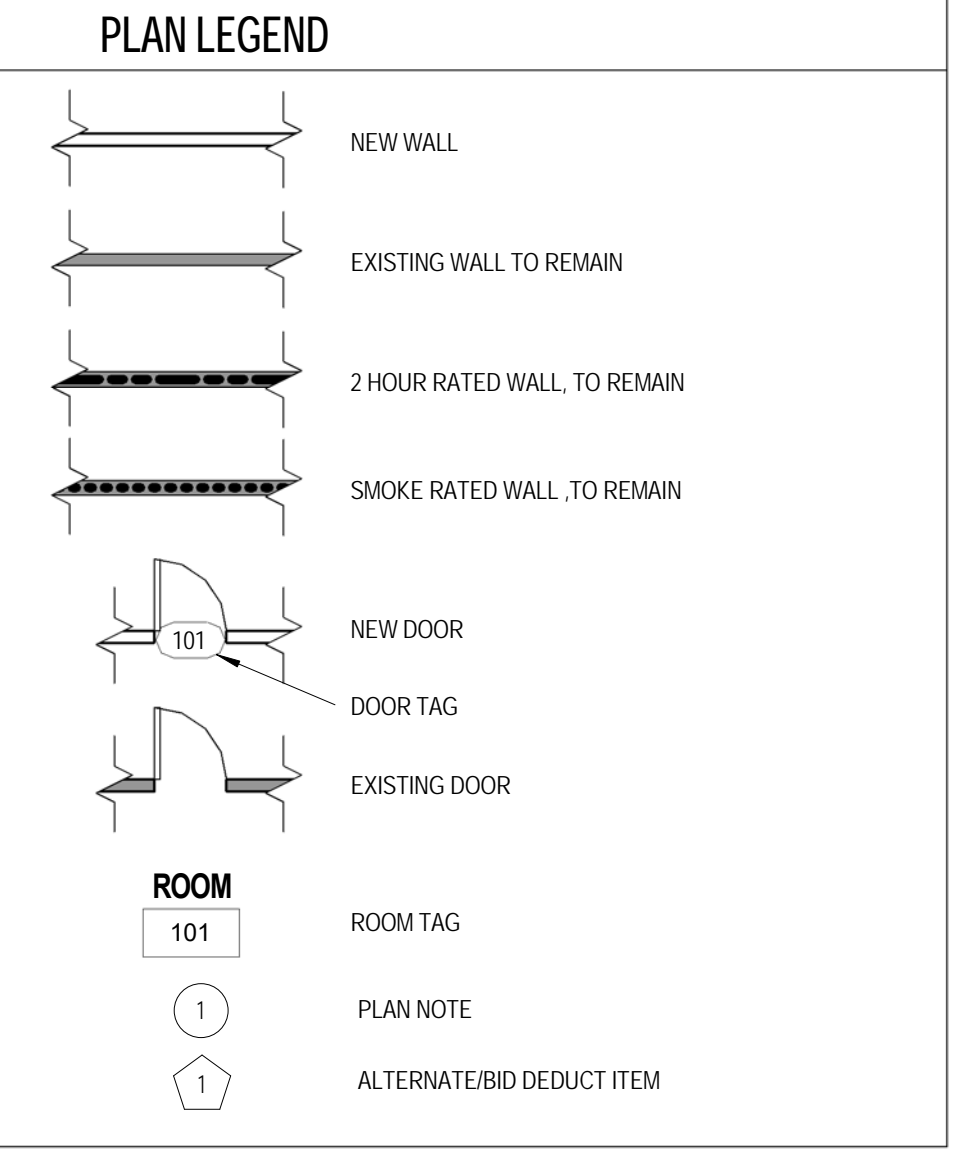
ELEVATORS P1-4 & S5-6 - LEVEL 10 FLOOR PLAN
AS102 / SCALE: 1/8" = 1'-0"



ELEVATORS P1-4 & S5-6 - LEVEL 9 FLOOR PLAN
AS102 / SCALE: 1/8" = 1'-0"



ELEVATORS P1-4 & S5-6 - LEVEL 8 FLOOR PLAN
AS102 / SCALE: 1/8" = 1'-0"

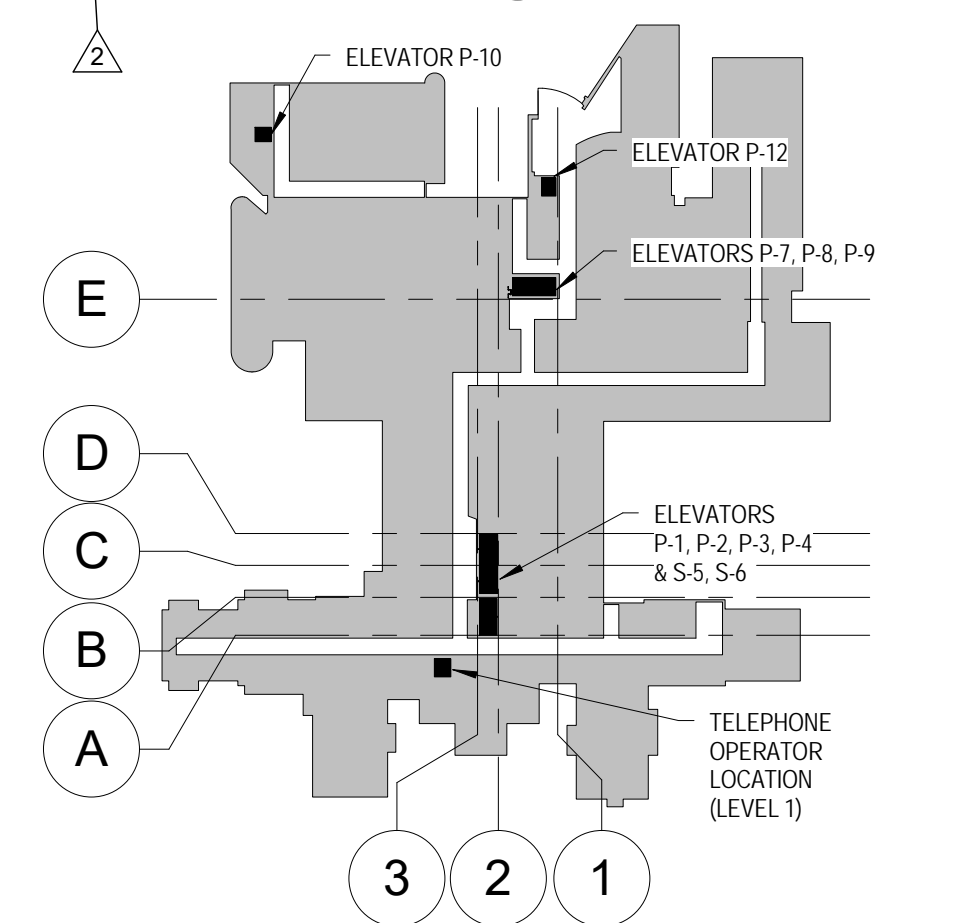


CONSTRUCTION PLAN GENERAL NOTES




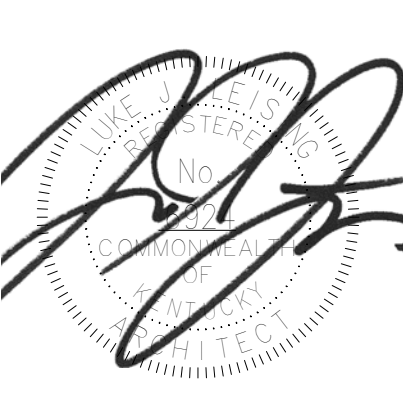

- ALL DIMENSIONS SHOWN ARE TO FACE OF WALL, FRAMING/MASONRY UNLESS NOTED OTHERWISE. DIMENSIONS DESIGNATES AS "CLR" OR "CLEAR" INDICATE A CLEAR DIMENSION FROM FACE OF FINISH TO FACE OF FINISH.
- KEYNOTES AND LEGENDS ARE TYPICAL FOR ALL FLOOR PLAN SHEETS. INDIVIDUAL NOTES MAY NOT APPLY TO EACH SHEET.
- REFERENCE STRUCTURAL, MECHANICAL, PLUMBING AND ELECTRICAL FOR ITEMS. COORDINATE AS REQUIRED INCLUDING NECESSARY FRAMING, BLOCKING, ETC.
- VERIFY EXISTING FIELD CONDITIONS PRIOR TO BEGINNING WORK. AND REPORT DISCREPANCIES IMMEDIATELY TO ARCHITECT FOR CLARIFICATION.
- PATCH EXISTING WALLS WHERE NEW WALLS MEET.
- ALL GYPSUM WALLBOARD IS 5/8" TYPE "X" UNLESS NOTED OTHERWISE.
- PROVIDE MINIMUM CLEARANCES AT ALL DOORS PER DETAILS ON AS001.
- CONTRACTOR TO MAINTAIN/REPAIR RATING OF EXISTING PARTITIONS AS AFFECTED BY DEMOLITION/NEW CONSTRUCTION. TYPICAL THROUGHOUT.
- ALL NEW PARTITIONS ARE WALL TYPE S3A1 UNLESS NOTED OTHERWISE.
- WHERE NO DIMENSION IS INDICATED, FINISH DOORS 6" FROM EDGE OF STUD FRAMING AT CORNERS UNLESS OTHERWISE NOTED.
- COLUMN GRID IS PROVIDED FOR ORIENTATION AND VERTICAL RELATION. ADDITIONAL EXISTING COLUMNS, BEAMS AND STRUCTURAL SYSTEMS EXIST BUT HAVE NOT BEEN VERIFIED.

CONSTRUCTION PLAN NOTES

- REPLACE CAB CALL BUTTONS AND OPERATING PANELS AS SPECIFIED. AT 36" ABOVE FF. REMOVE "IN CASE OF FIRE" SIGNAGE. PATCH AND REPAIR FINISHES TO MATCH EXISTING ADJACENT AS SCHEDULED.
- CEILING MOUNTED MONITOR. TIED TO ELEVATOR MONITORING SYSTEM.
- REPLACE ELEVATOR DOORS.
- INFILL, PATCH AND FINISH OPENINGS AS REQUIRED TO MATCH EXISTING CONDITIONS. ALSO FINISH FACE OF WALL, BOTH SIDES. COORDINATE WITH FINISH SCHEDULE.
- COVER EXISTING GUARD WITH HIGH IMPACT ENGINEERED PETG ELEVATOR FRAME PROTECTION. PAINT EXISTING FRAME AND METAL DOOR (UNLESS SS).
- COVER EXISTING FRAME, BOTH JAMBS, WITH NEW FINISH STAINLESS STEEL SLEEVES FOR ELEVATOR DOOR FRAME.
- PROVIDE PERIMETER WALL OR FRAME TO PROTECT EXISTING DATA CONNECTIONS AS SPECIFIED. COORDINATE WITH MEP DRAWINGS.
- REMOVE CAB INDICATOR LAMPS AND PANELS AND TRAVEL DIRECTION INDICATORS. PROVIDE LED INDICATOR PANEL. TIED TO NEW CONTROL SYSTEM AS SPECIFIED. PATCH AND REPAIR FINISHES TO MATCH EXISTING ADJACENT AS SCHEDULED.
- PROVIDE TEMPORARY SMOKE PARTITION TO ALLOW ACCESS FROM ELEVATOR P8 TO ACUTE CARE WAITING FOR DURATION OF P7 ELEVATOR SHUTDOWN. MODIFY ACOUSTICAL CEILING TILE SYSTEM AS REQUIRED TO COMPLETE NEW WORK. TEMPORARY SMOKE PARTITION SHALL BE 3/8" STEEL STUDS @ 16" O.C. WITH 5/8" TYPE "X" GYP BD BOTH SIDES. TO DECK. PROVIDE SMOKE SEAL RATED CAULKING AS REQUIRED TO PROVIDE SMOKE RATED PARTITION AND FINISHED INTERIOR SPACE. PROVIDE PAINT AND COVER WALL BASE. BOTH SIDES. FINISHES TO MATCH ADJACENT EXISTING PARTITION. PROVIDE TEMPORARY ELEVATOR CONTROLS FOR P8 AND P9.
- REMOVE TEMPORARY SMOKE PARTITION AND CONTROLS WHEN ELEVATOR P7 IS BACK IN SERVICE. MODIFY ACOUSTICAL CEILING TILE SYSTEM BACK TO ITS ORIGINAL CONDITION.
- REMOVE AND STORE EXISTING DOOR LEAF AND ASSOCIATED HARDWARE. PAINT EXISTING FRAME TO MATCH EXISTING COLOR. REINSTALL DOOR LEAF AND ASSOCIATED HARDWARE ONCE ELEVATOR P7 IS OPERATIONAL AND PLACED IN SERVICE.
- CONTRACTOR SHALL NOT HAVE ACCESS THROUGH THIS DOOR IN ANY PHASE.
- PAINT ELEVATOR METAL DOOR AND FRAMES (UNLESS SS) - P2.



BUILDING 1 KEY PLAN

  U.S. Department of Veterans Affairs ROBLEY REX VAMC 800 ZORN AVENUE LOUISVILLE, KY 40206		 		ARCHITECT/ENGINEERS: PROJECT LEAD Architect, Structural Engineer, Civil Engineer GUIDON DESIGN 905 N. CAPITOL AVE. SUITE 100 INDIANAPOLIS, IN 46204 317.800.6388 SUSTAINABLE ARCHITECTURE + ENGINEERING		MEP Engineer MILLER-REMICK LLC. 1010 Kings Highway South Cherry Hill, NJ 08034 Tele: 856-429-4000		Elevator Design STUARD & ASSOCIATES, INC. 2500 Lincoln Hill Road Martinsville, IN 46151 Tele: 765-352-1975		Drawing Title FLOOR PLANS Approved for Design Concept: FACILITY MANAGEMENT DIVISION MANAGER		Project Title UPGRADE ELEVATOR CONTROLS Location ROBLEY REX VA MEDICAL CENTER Date 2015/09/25		Project Number 15.1035 Building Number #1 Drawing Number AS102		Office of Facilities Management VA Project Number 603-15-101 	
---	--	--	--	--	--	--	--	---	--	---	--	--	--	--	--	--	--