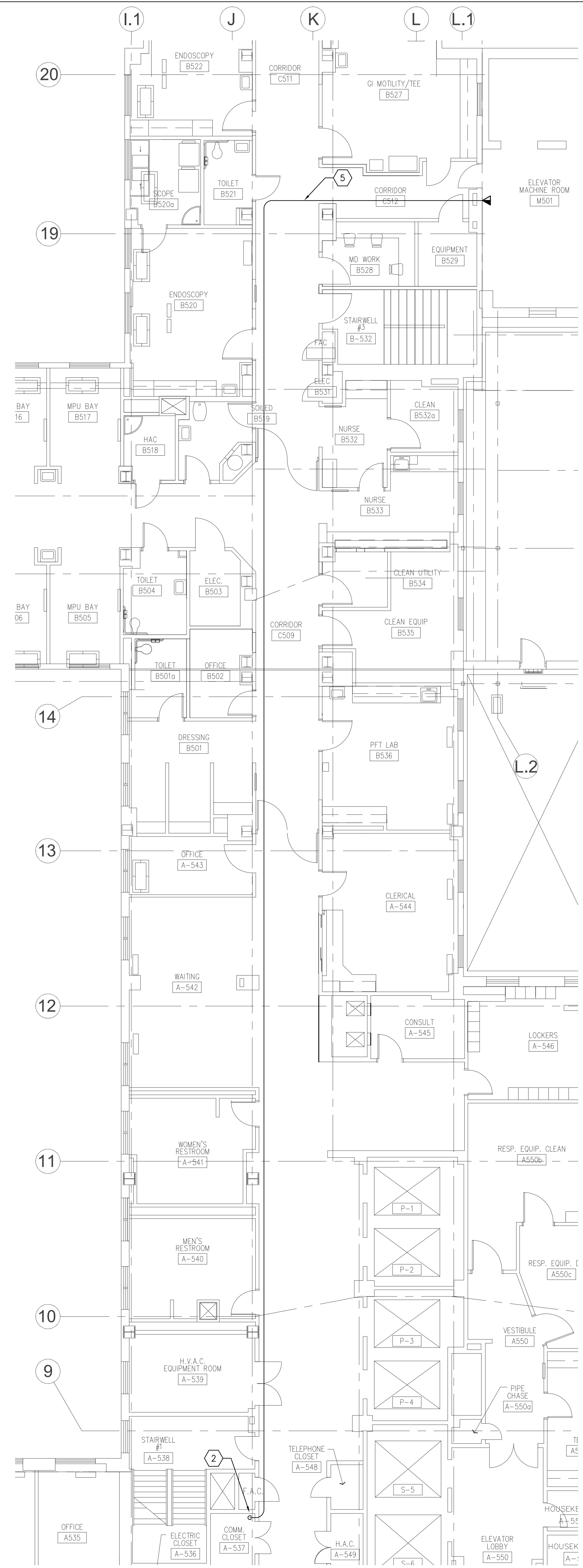


GENERAL SHEET NOTES:

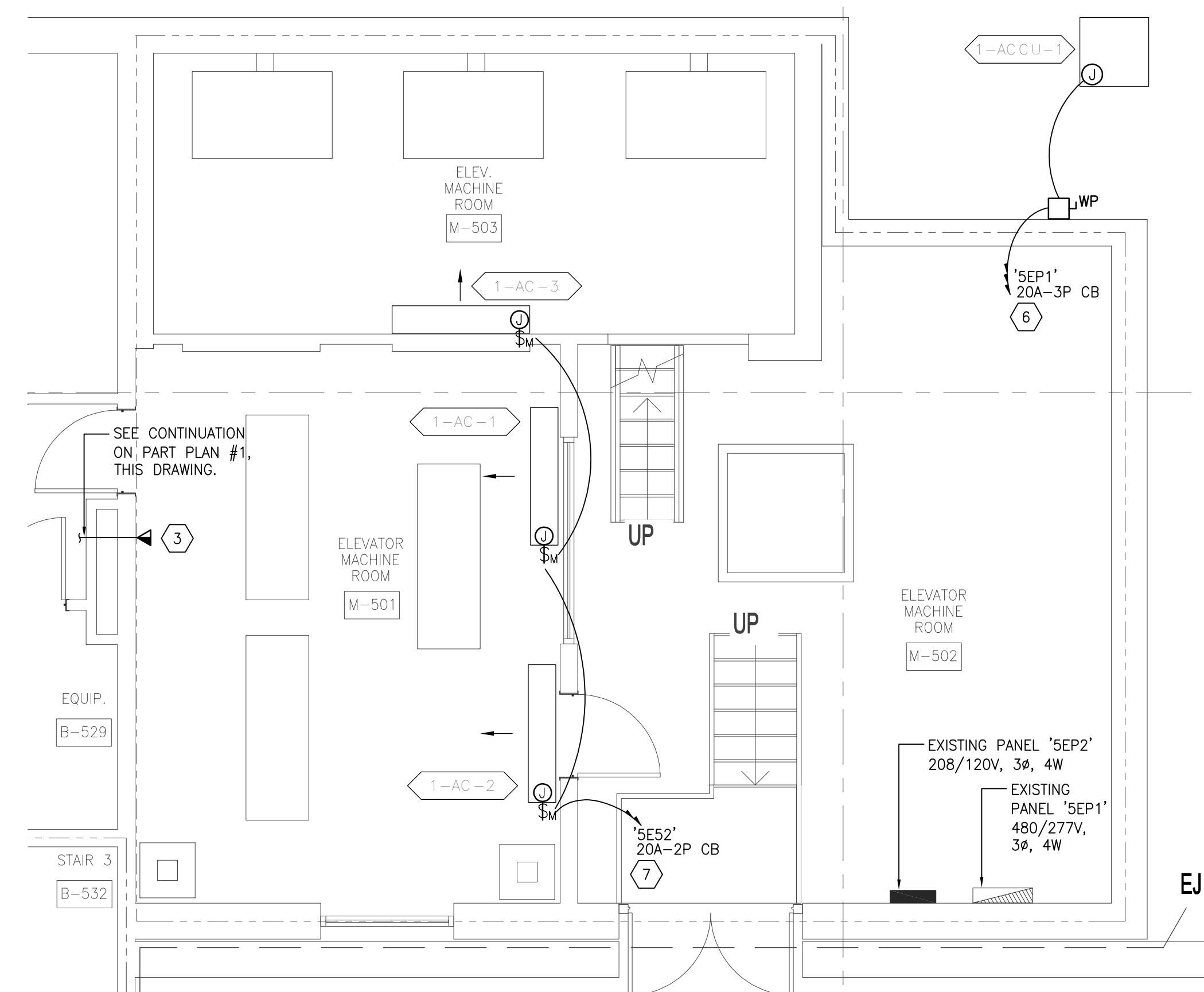
1. SEE DRAWING EC001-EC002 FOR GENERAL NOTES, SYMBOLS AND ABBREVIATIONS.

SHEET KEYNOTES:

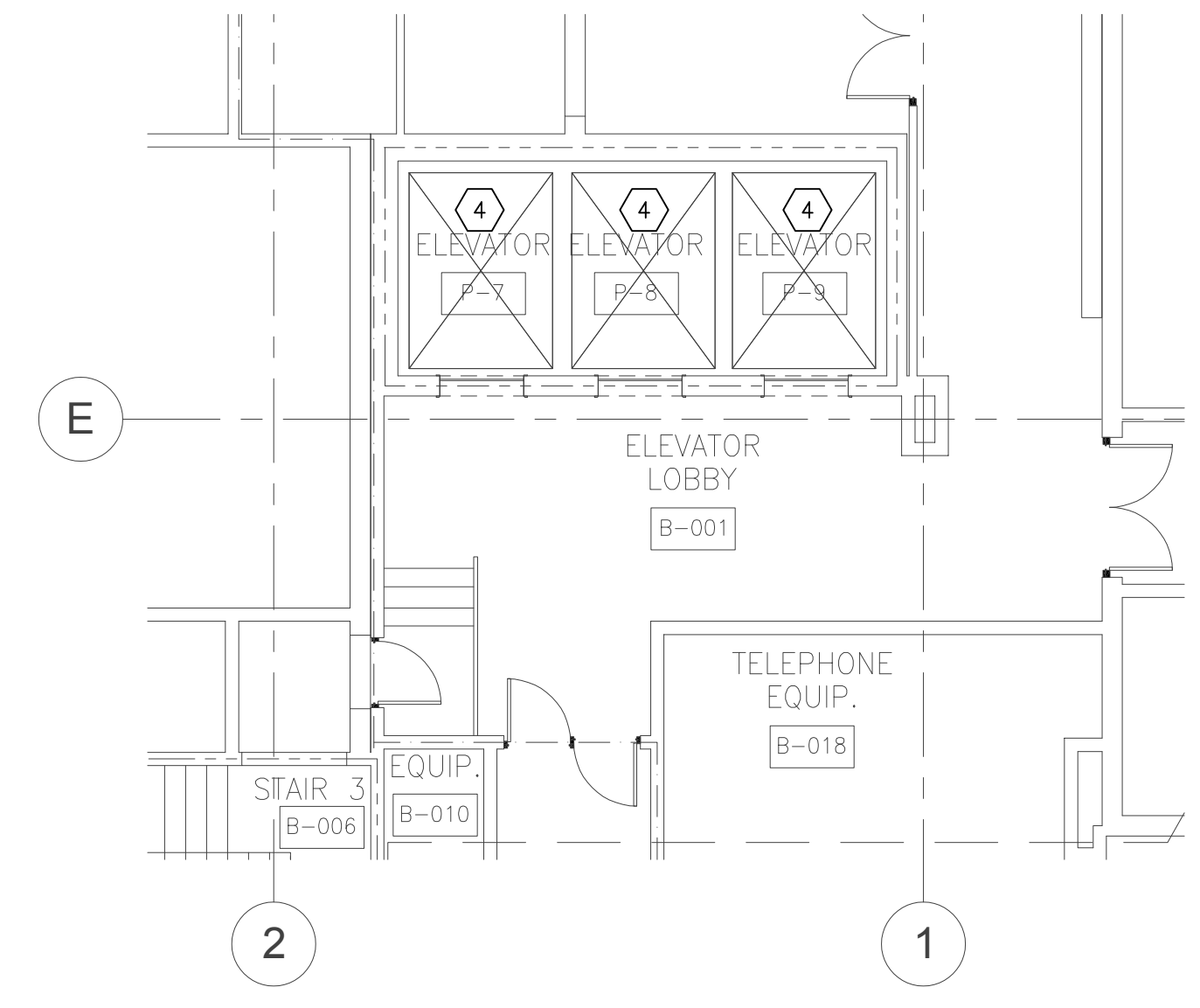
- EXISTING ELEVATOR PIT LIGHTING AND GFI RECEPTACLES TO REMAIN. NEW LIGHT SWITCHES TO BE PROVIDED IN NEW LOCATIONS (NEXT TO PIT LADDERS, FIELD VERIFY EXACT LOCATION) AND WIRED IN 3-WAY CONFIGURATION USING EXISTING CIRCUITS. EXTEND AS REQUIRED.
- MAKE CONNECTION TO LOCAL AREA NETWORK EQUIPMENT LOCATED IN THIS COMMUNICATIONS ROOM FOR ELEVATOR CONTROLS MONITORING SYSTEM.
- PROVIDE DATA JACK AND BACK BOX FOR NETWORK CONNECTION OF ELEVATOR CONTROLLERS. PROVIDE CAT5E CABLE TO NEAREST COMMUNICATION ROOM AS INDICATED ON PLANS.
- EXISTING ELEVATOR CAB LIGHT FIXTURES TO BE REMOVED AND REPLACED WITH NEW LED FIXTURES. LED DOWNLIGHT FIXTURES WILL BE CALCULATED TO LIGHT LEVELS OF 30-FOOT CANDLES (1/4" = 105) AT 914 MM (36 IN.) ABOVE THE FINISHED FLOOR. FIXTURES WILL USE LED LAMPS WITH 5000K COLOR TEMPERATURE. CAB LIGHTING WILL BE UPGRADED TO BE CONTROLLED WITH OCCUPANCY/MOTION SENSORS.
- PROVIDE CAT5E PLENUM RATED CABLE ROUTED ABOVE CORRIDOR CEILING. USE EXISTING CORRIDOR CABLE TRAY WHERE AVAILABLE. OTHERWISE, SECURE CABLING TO BUILDING STRUCTURE USING APPROVED BUILDING STANDARDS.
- PROVIDE NEW WEATHERPROOF, WALL MOUNTED DISCONNECT SWITCH FOR CONNECTION TO NEW OUTSIDE ACCU UNIT. CIRCUIT TO EXISTING PANEL 'SEP1' WITH 4-#10 & 1-#10G IN 1" CONDUIT TO NEW 25A-3P CIRCUIT BREAKER IN EXISTING SPACE.
- PROVIDE TOGGLE MANUAL MOTOR RATED SWITCHES FOR EACH INDOOR AC UNIT. CIRCUIT TO EXISTING PANEL 'SEP2' WITH 2-#12 & 1-#12G IN 3/4" CONDUIT TO NEW 20A-3P CIRCUIT BREAKER IN EXISTING SPACE.



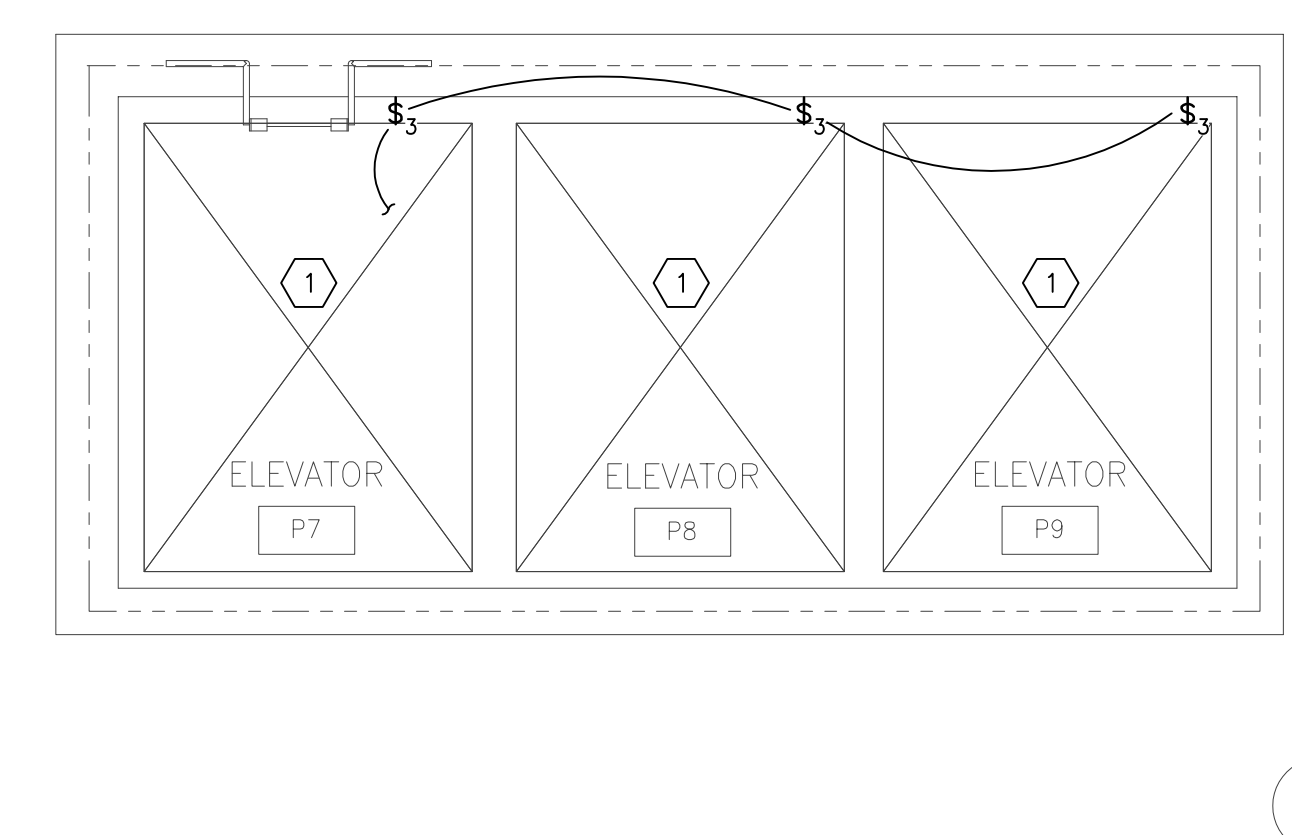
1 ELEVATOR - LEVEL 5 FLOOR PLAN
SCALE: 1/8"=1'-0"
2 ALL ELECTRICAL WORK ON THIS PLAN TO BE REMOVED FROM BASE BID UNDER ALTERNATE #2.



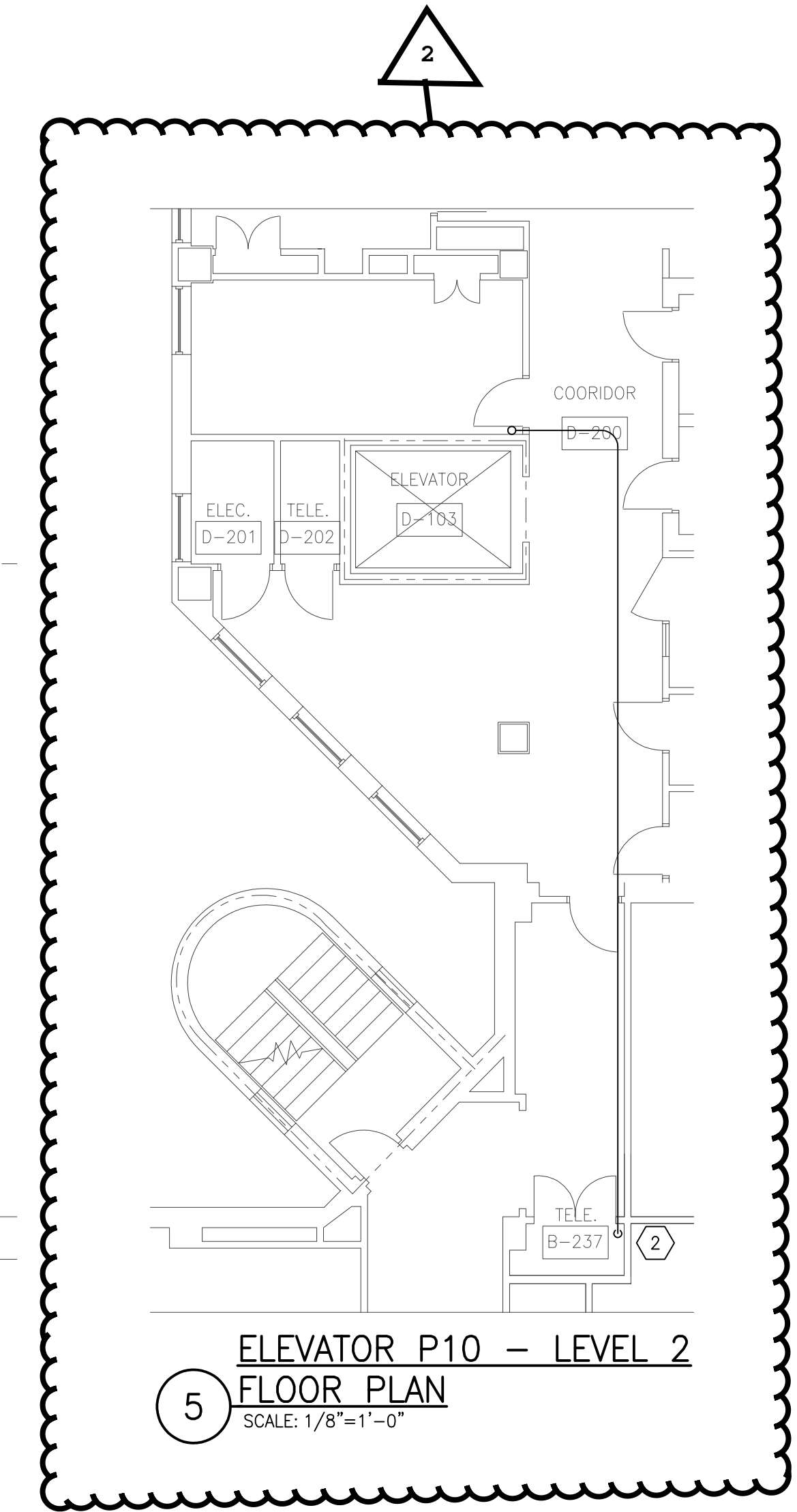
2 ELEVATOR P7-9 - LEVEL 5 FLOOR PLAN
SCALE: 1/4"=1'-0"
2 ALL ELECTRICAL WORK ON THIS PLAN TO BE REMOVED FROM BASE BID UNDER ALTERNATE #2.



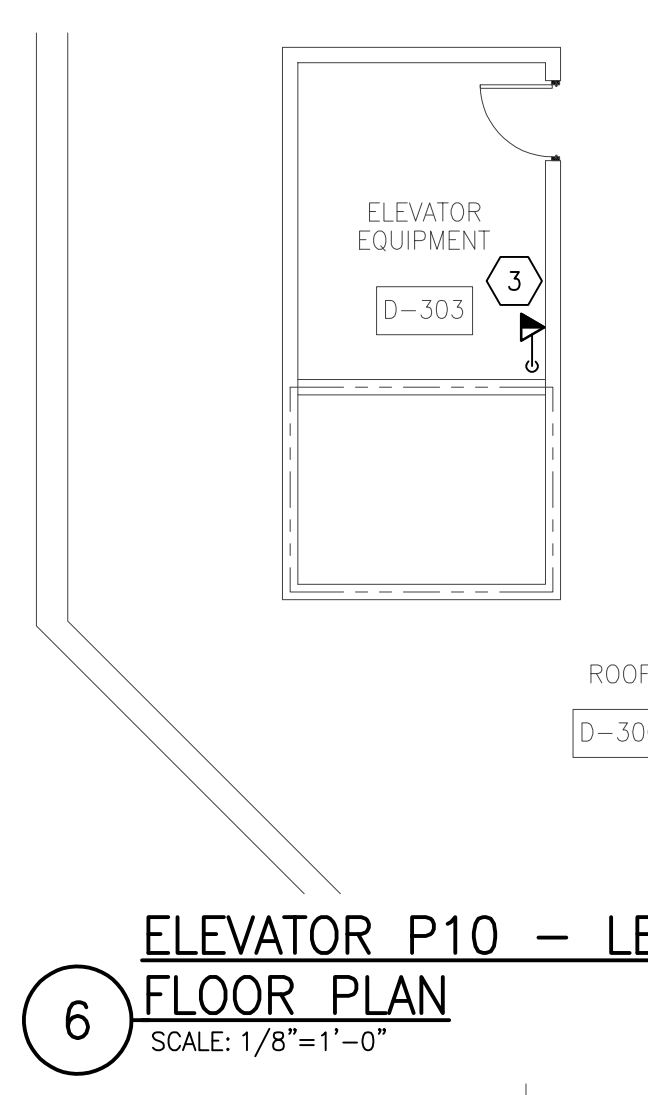
3 ELEVATOR P7-9 - LEVEL 0 FLOOR PLAN
SCALE: 1/8"=1'-0"
2 ALL ELECTRICAL WORK ON THIS PLAN TO BE REMOVED FROM BASE BID UNDER ALTERNATE #2.



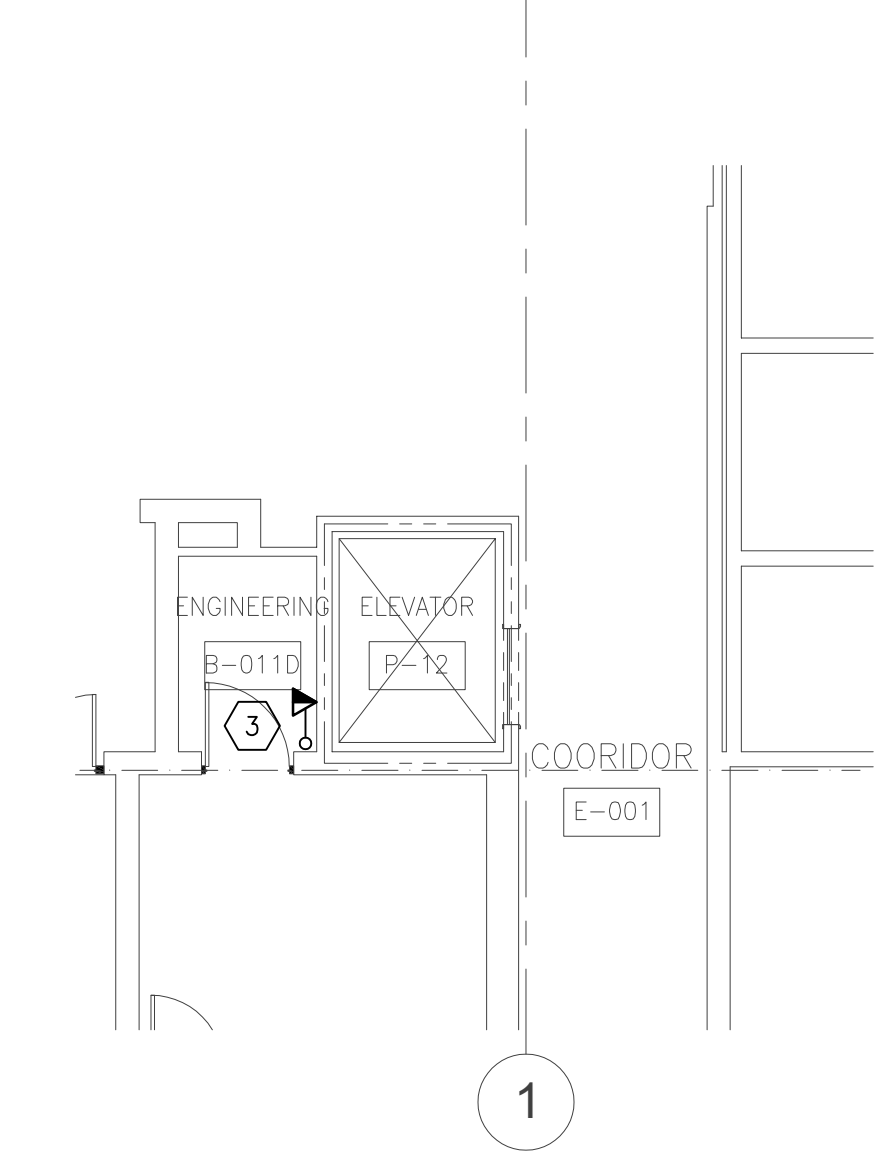
4 ELEVATOR P7-9 - PIT FLOOR PLAN
SCALE: 1/4"=1'-0"
2 ALL ELECTRICAL WORK ON THIS PLAN TO BE REMOVED FROM BASE BID UNDER ALTERNATE #2.



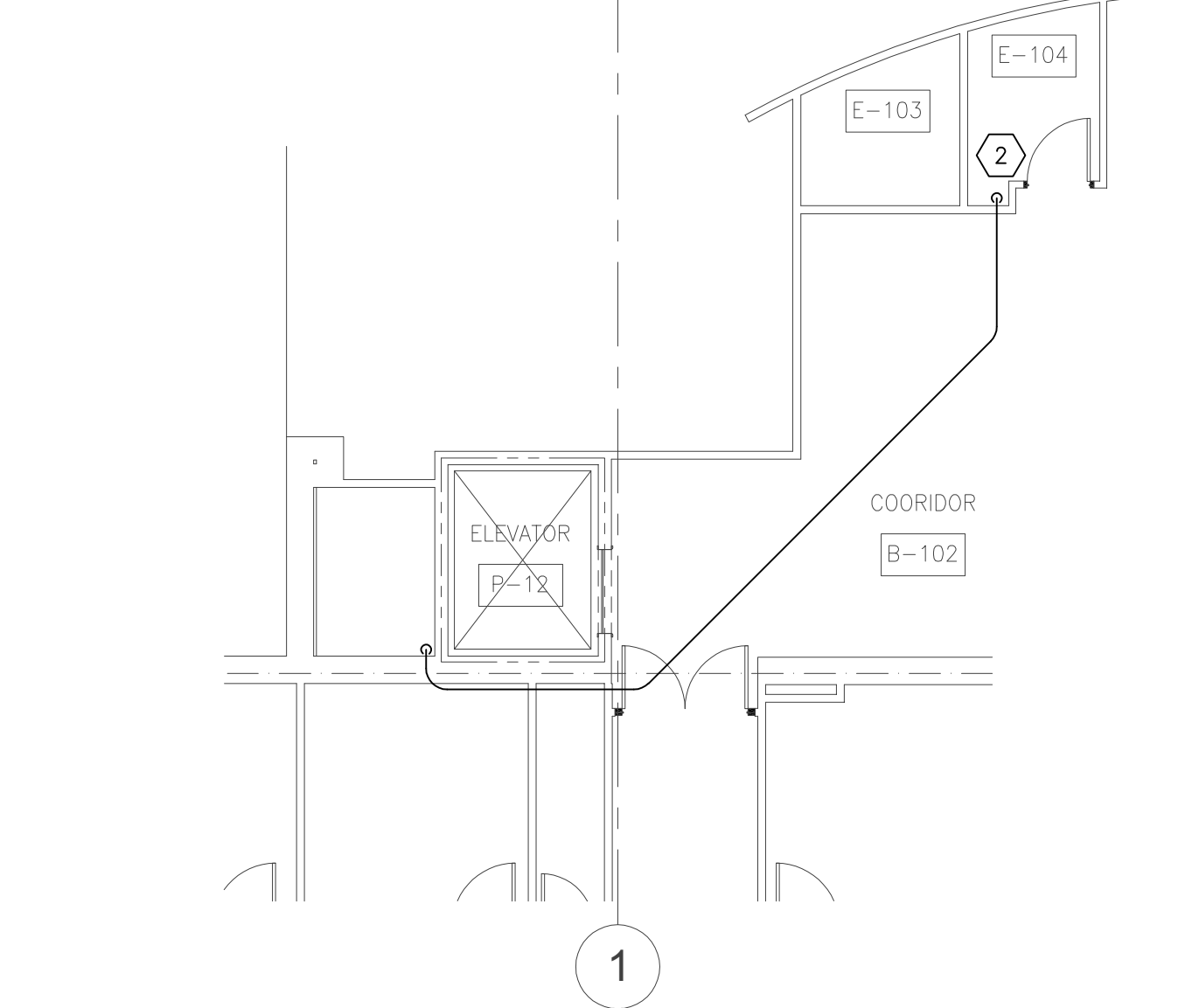
5 ELEVATOR P10 - LEVEL 2 FLOOR PLAN
SCALE: 1/8"=1'-0"



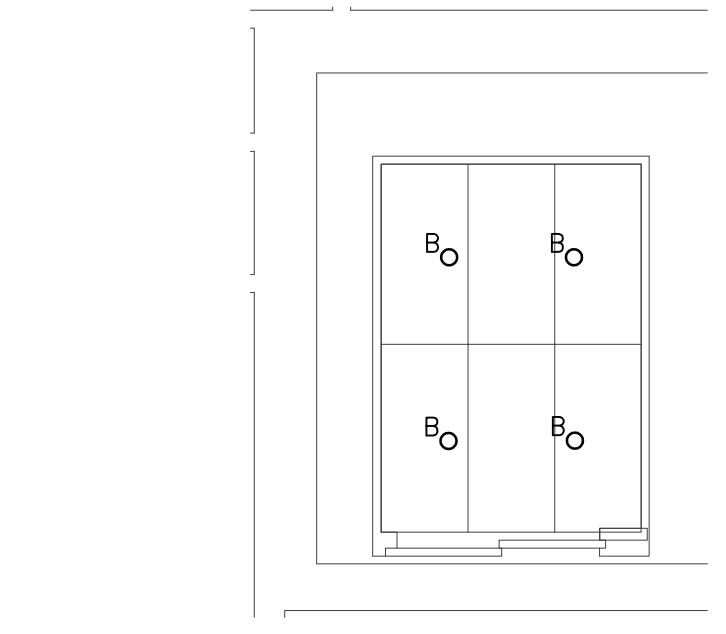
6 ELEVATOR P10 - LEVEL 3 FLOOR PLAN
SCALE: 1/8"=1'-0"



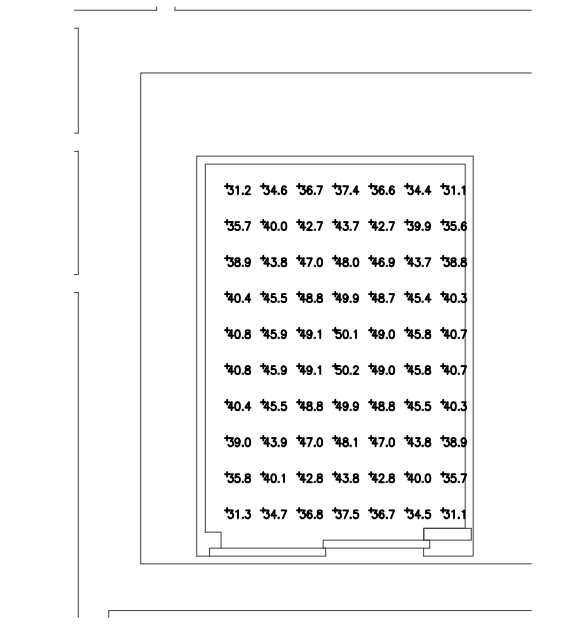
7 ELEVATOR P12 - LEVEL 0 FLOOR PLAN
SCALE: 1/8"=1'-0"



8 ELEVATOR P12 - LEVEL 1 FLOOR PLAN
SCALE: 1/8"=1'-0"



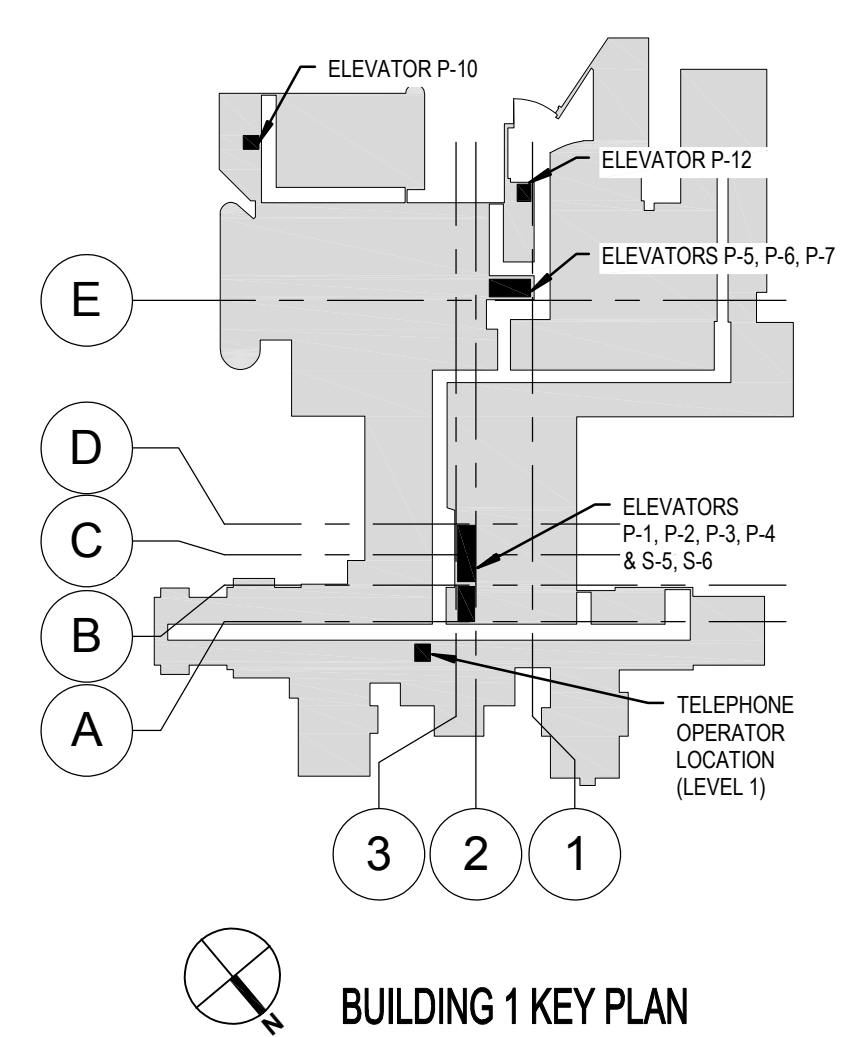
9 REFLECTED CEILING PLAN TYP. ELEVATORS P7-9
SCALE: 1/4"=1'-0"
2 ALL ELECTRICAL WORK ON THIS PLAN TO BE REMOVED FROM BASE BID UNDER ALTERNATE #2.



10 LIGHTING CALCULATIONS TYP. ELEVATORS P7-9
SCALE: 1/4"=1'-0"
2 ALL ELECTRICAL WORK ON THIS PLAN TO BE REMOVED FROM BASE BID UNDER ALTERNATE #2.

LUMINAIRE SCHEDULE						
Symbol	Label	Qty	Catalog Number	Description	Lamp	LLF Watts
○	B	4		Basis of Design - Nicor 600 luminaire, frosted plastic lens	LED 5000K	0.95 8.8

STATISTICS					
Description	Symbol	Avg	Max	Min	Avg/Min
Cable P7-9 Zones	+	42.8 ft	50.2 ft	31.1 ft	1.6:1



BUILDING 1 KEY PLAN

Revisions:	Date

VA U.S. Department of Veterans Affairs
ROBLEY REX VAMC
 800 ZORN AVENUE LOUISVILLE, KY 40206

U.S. DEPARTMENT OF VETERANS AFFAIRS
 THOMAS L. CHAPMAN
 REGISTERED PROFESSIONAL ENGINEER
 10/31/16

ARCHITECT/ENGINEERS:
PROJECT LEAD
 Architect, Structural Engineer, Civil Engineer
GUIDON DESIGN
 905 N. CAPITOL AVE. SUITE 100 INDIANAPOLIS, IN 46204
 317.600.6388 SUSTAINABLE ARCHITECTURE + ENGINEERING

MEP Engineer
 MILLER-REMICK LLC.
 1010 Kings Highway South
 Cherry Hill, NJ 08034
 Tele: 856-429-4000

Elevator Design
 STUARD & ASSOCIATES, INC
 2500 Lincoln Hill Road
 Martinsville, IN 46151
 Tele: 765-352-1975

BID DOCUMENTS			
Drawing Title ELECTRICAL - PARTIAL FLOOR PLANS ELEVATORS P7-9, P10 & P12	Project Title UPGRADE ELEVATOR CONTROLS	Project Number 15.1035	OFFICE OF FACILITIES MANAGEMENT
Approved for Design Concept: FACILITY MANAGEMENT DIVISION MANAGER	Location ROBLEY REX VA MEDICAL CENTER	Building Number #1	VA Project Number 603-15-101
Date 2015/09/25	Checked By: GFE	Drawn By: LIB	EP102