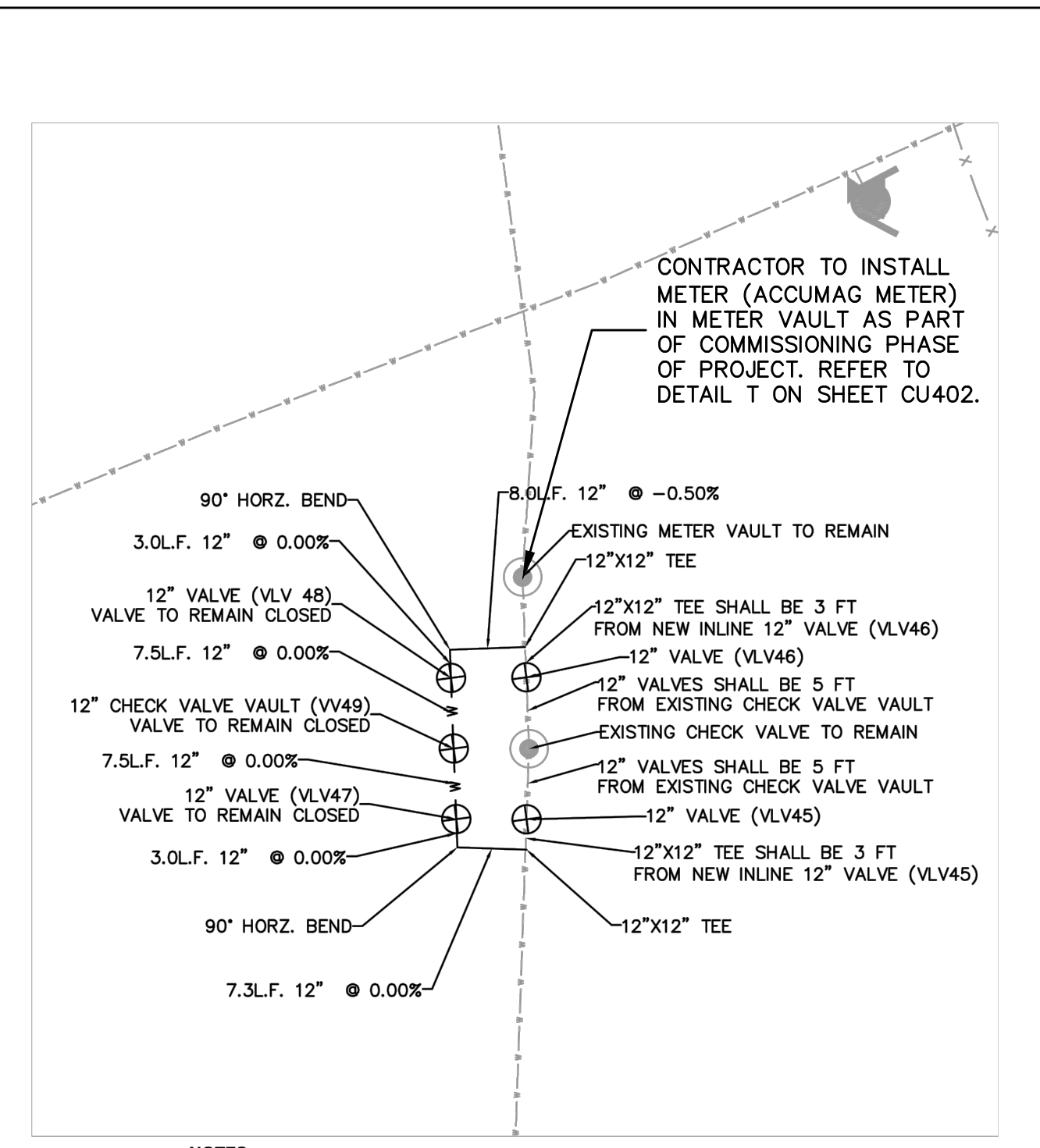
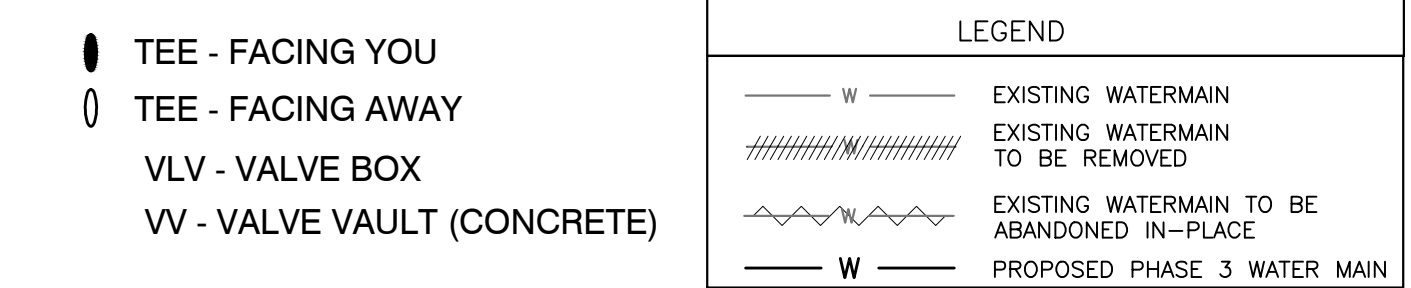
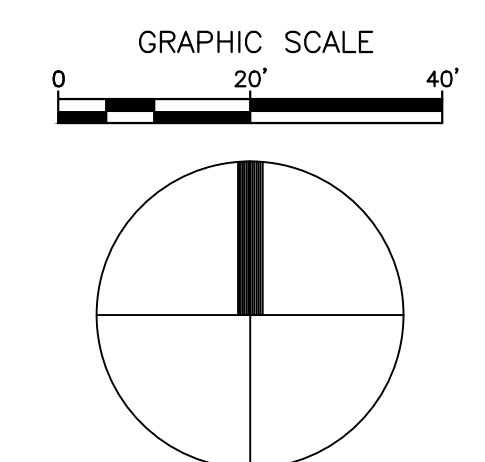


TEMPORARY FLUSHING HYDRANT. CONTRACTOR TO ENSURE THE FLUSHING HYDRANT IS CLEARLY DESIGNATED AS A FLUSHING HYDRANT (I.E. SPECIAL SIGN, SPECIAL HYDRANT COVER, SPECIAL HYDRANT COLOR OR LOCKOUT DEVICE). FLUSHING HYDRANT IS NOT TO BE USED FOR FIRE PROTECTION.

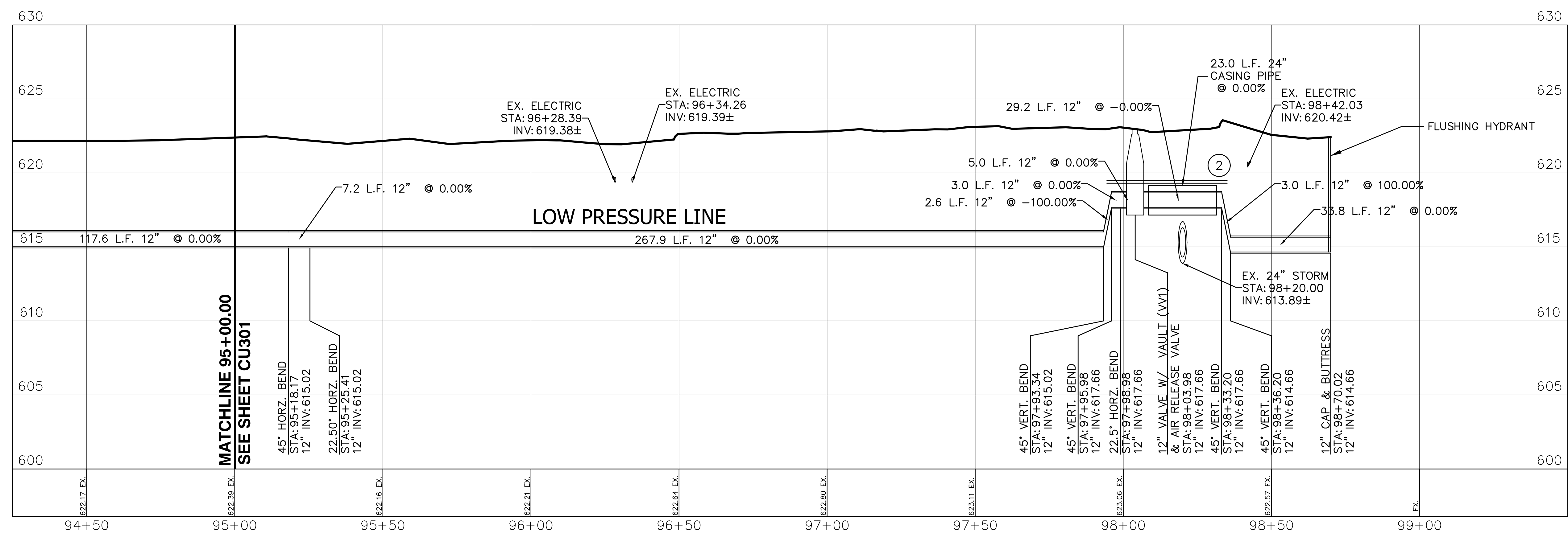


NOTES:
1. PROPOSED BY-PASS CHECK VALVE SYSTEM TO BE INSTALLED AT EXISTING WATER MAIN ELEVATIONS.
PHASE 3A - WATER MAIN CHECK VALVE NEAR MAIN ENTRANCE

KEYED NOTES: #
1. POTENTIAL TREE IMPACT. SEE RESTORATION PLANS CU200 & CU201.
2. INSULATE WATERMAIN PER PROJECT SPECIFICATIONS. COVER IS LESS THAN 5'.



NOTES:
1. EXISTING UTILITY CROSSING IN PROFILE ARE OUTSIDE BOTTOM OF PIPE / STRUCTURE ELEVATIONS.
2. SHADED LINE IN PLAN VIEW DENOTES WATER MAIN SHOWN IN PROFILE VIEW.
3. CONTRACTOR SHALL FIELD VERIFY ALL VALVES TO BE REMOVED. CONTRACTOR TO REMOVE PIV VALVES. CONTRACTOR TO DISCONNECT ALL TAMPER SWITCH CONTROL WIRING AND REMOVE CONTACT POINTS FROM ASSOCIATED FIRE ALARM PANEL. CONTRACTOR TO COORDINATE ALL PIV WORK WITH THE VA AND PAUL BATTAGLIA.
4. CONTRACTOR SHALL REFER TO THE PLUMBING PLANS FOR THE LOCATION AND INSTALLATION OF THE PROPOSED WATER SERVICE LATERALS.
5. AT SEWER & STORM CROSSING LOCATIONS WHERE THE WATER MAIN IS CROSSING UNDER THE SEWER OR STORM THE CONTRACTOR SHALL EITHER CASE THE WATER MAIN PIPE OR RECONSTRUCT THE SEWER OR STORM WITH DUCTILE IRON PIPE WITH MECHANICAL JOINTS EQUIVALENT OR PVC TO EQUIVALENT WATER MAIN STANDARDS. CASING PIPE OR RECONSTRUCTED SEWER SHALL BE EXTENDED BEYOND EACH SIDE OF THE CROSSING FOR A MINIMUM DISTANCE OF 10 FEET. CASING PIPE OPTION IS SHOWN ON PLAN PROFILE DRAWINGS FOR CLARITY.



SCALE: 1" = 20' HORIZONTAL
1" = 4' VERTICAL

Revisions	Date



PHASE 3A - 100% CONSTRUCTION DOCUMENTS: JULY 29, 2016

Drawing Title
**PHASE 3 - WATER MAIN
PLAN & PROFILE - LOW PRESSURE
STA:95+00.00 TO STA:98+70.2**

Approved: Division Chief
Approved: Service Director

Project Title
**VA HINES MEDICAL CENTER
REPLACE EXISTING
WATER MAINS PROJECT**

Building Number
Checked: JBL
Drawn: SIGJ

Location
HINES, ILLINOIS

Date
JULY 29, 2016

Project No.
VA#578-15-032
HGA#3931-001-00

DRAWING NO.
CU302

Dwg. ___ of ___

Office of
Facilities
Management

