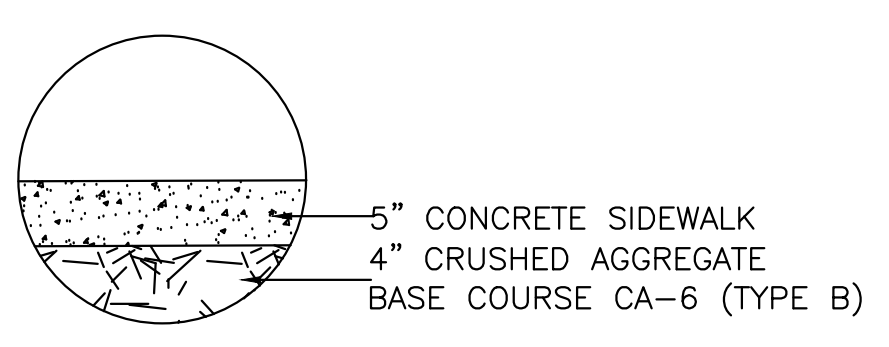
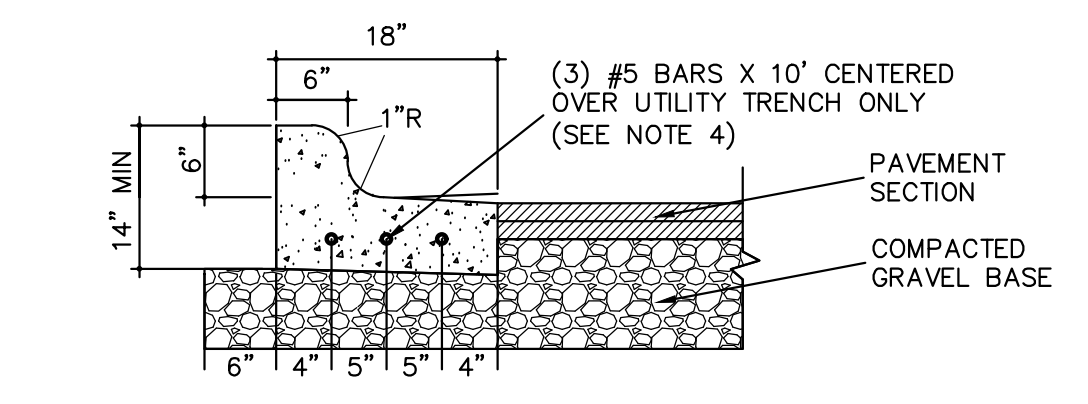


PHASE 3A - WATER MAIN CHECK VALVE NEAR MAIN ENTRANCE

- GENERAL NOTES:**
- CONTRACTOR TO CONDUCT CONSTRUCTION OPERATIONS AS TO NOT IMPAIR THE OPERATIONS OF THE OWNER'S EXISTING FACILITIES.
 - CONTRACTOR SHALL TAKE MEASURES NECESSARY TO MAINTAIN EXISTING FACILITIES DURING THE CONSTRUCTION OF CONNECTIONS TO OR MODIFICATION TO EXISTING FACILITIES. EXISTING FACILITIES THAT ARE TO BE ABANDONED OR REMOVED IN CONNECTION WITH THE CONSTRUCTION SHALL STAY IN SERVICE UNTIL NEW FACILITIES ARE COMPLETED AND APPROVED FOR OPERATION.
 - CONTRACTOR SHALL COORDINATE CONSTRUCTION ACTIVITIES WITH THE OWNER TO ENSURE AND MAINTAIN SAFE ACCESS TO THE EXISTING FACILITIES WITHOUT INTERRUPTION.
 - CONTRACTOR SHALL PROTECT TREES, SHRUBS, LAWNS, FENCING AND OTHER EXISTING FEATURES NOT SHOWN TO BE REMOVED.
 - REFER TO PROJECT SPECIFICATIONS FOR LANDSCAPING AND PLANTING INSTALLATION AND RESTORATION GUIDELINES.
 - REPLACE ALL PLANTINGS/TREES THAT DIE OR SHOW EVIDENCE OF DYING DURING THE PLANT ESTABLISHMENT PERIOD AT THE EARLIEST APPROPRIATE PLANTING TIME, AFTER THIS CONDITION BECOMES APPARENT. ALL NEW PLANTINGS/TREES OR TRANSPLANTED EXISTING PLANTINGS/TREES SHALL HAVE A 1 YEAR WARRANTY AT THE DISCRETION OF THE VA CONTRACTING OFFICER.
 - REPLACE EXISTING PAVEMENT SECTIONS IN-KIND. REFER TO MINIMUM PAVEMENT SECTIONS BELOW. LANDSCAPE RESTORATION INCLUDES BUT IS NOT LIMITED TO SOD, WALKS, PLAZA, BENCHES AND SIGNAGE, ETC. ALL LAWN SURFACES AND NON-PAVED AREAS DISTURBED AS PART OF CONSTRUCTION SHALL BE TOPSOILED AND SODDED AS PART OF FINAL RESTORATION. SEED/MULCH MAY ONLY BE USED FOR TEMPORARY RESTORATION. LANDSCAPE BEDS SHALL BE RESTORED IN KIND. ALL TREES, SHRUBS AND PERENNIALS DAMAGED OR REMOVED DUE TO WATER MAIN INSTALLATION SHALL BE REPLACED IN KIND.
 - NEW CURB AND GUTTER TO MATCH EXISTING.
 - EXISTING SURFACE FEATURES ARE BASED ON CONDITIONS FOUND FROM VARIOUS SOURCES. CONTRACTOR SHALL FIELD VERIFY EXISTING CONDITIONS AT THE TIME OF CONSTRUCTION AND RESTORE AREAS TO MATCH EXISTING CONDITIONS FOUND AT THE TIME OF CONSTRUCTION.
- TREE PROTECTION GUIDELINES:**
THE CONTRACTOR SHALL FOLLOW THE TREE PROTECTION GUIDELINES WHEN CUTTING ROOTS, IF REQUIRED:
- WATER TREE A FEW DAYS BEFORE WORK WILL BE COMPLETED.
 - MAKE SURE CUTS ARE DONE WITH HAND TOOLS THAT WILL MAKE CLEAN, QUICK CUTS. DO NOT USE LARGE EQUIPMENT LIKE BACKHOES AND BULLDOZERS. DO NOT DISTURB ROOTS MORE THAN NECESSARY.
 - CUT ROOTS ARE TO BE COVERED WITH SOIL AS SOON AS POSSIBLE. IF ROOTS ARE TO BE EXPOSED FOR MORE THAN AN HOUR, ROOTS MUST BE COVERED WITH A DAMP CLOTH. DAMP CLOTH IS TO BE KEPT MOIST UNTIL SOIL CAN BE USED FOR PERMANENT COVER.
 - WHEN JOB IS COMPLETED AROUND THE TREE, WATER THE TREE THOROUGHLY. WET FIRST 12 INCHES OF SOIL WITH THE TREE DRIP LINE.
 - DO NOT SCRAPE/REMOVE SOIL AROUND TREE TRUNK.
 - DO NOT PLACE FILL OR STONE MATERIALS AROUND OR NEAR TREES.

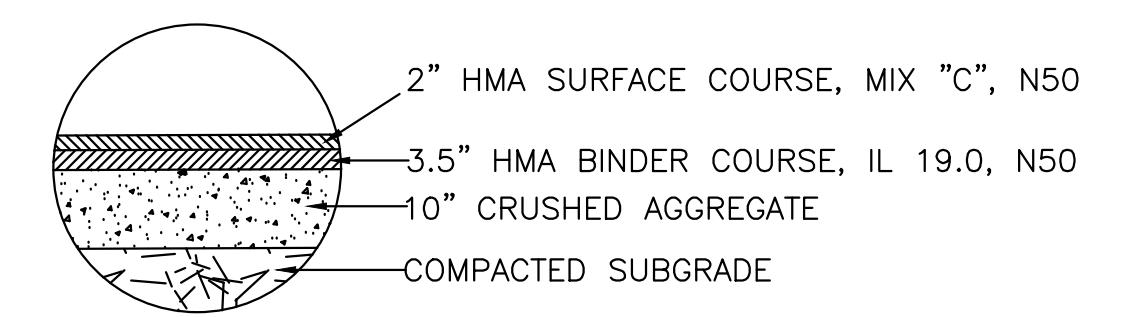


A SIDEWALK SECTION
NOT TO SCALE

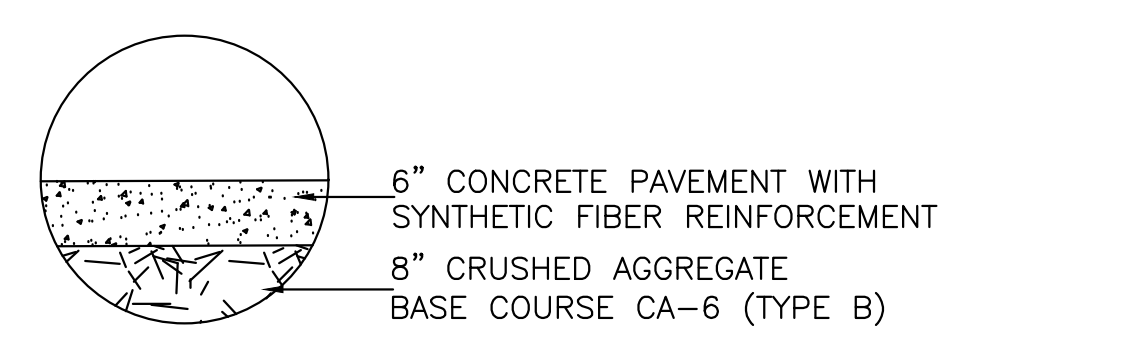


B 18" CURB & GUTTER SECTION
NOT TO SCALE

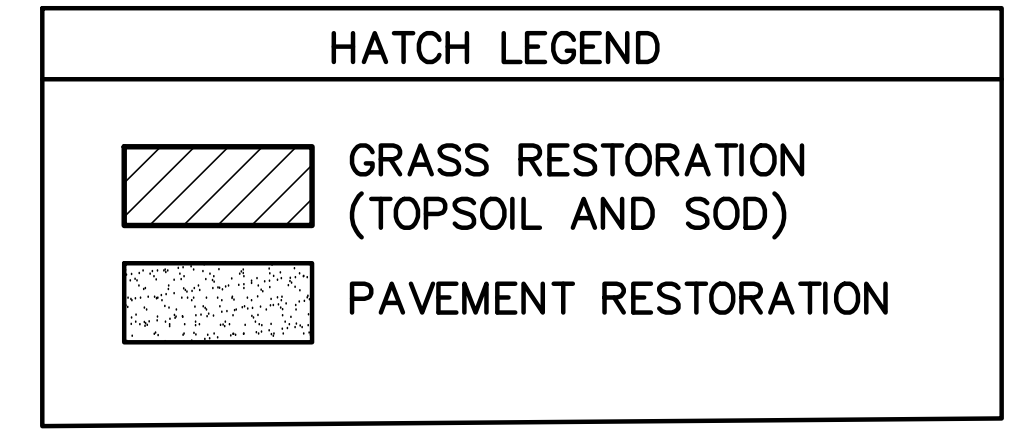
- SLOPE AWAY FROM GUTTER AT 1/2 PER FOOT FOR REJECT CURB.
- SLOPE TOWARD CURB AND GUTTER AT 1/2 PER FOOT FOR ACCEPT CURB.
- CONSTRUCTION JOINTS TO BE TOOLED OR SAWCUT EVERY 15' TO A MINIMUM DEPTH OF 1-1/2".
- ADD #5 BARS X 18" AT CONNECTIONS TO EXISTING CURB & GUTTER.
- MAINTAIN ASPHALT SURFACE 1/4" ABOVE GUTTER FLANGE.



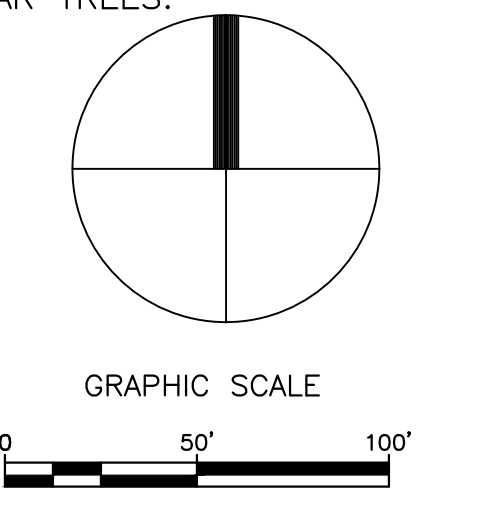
C ASPHALT PAVEMENT SECTION
NOT TO SCALE



D CONCRETE PAVEMENT SECTION
NOT TO SCALE



NOTE: RESTORATION SECTIONS SHOWN ARE MINIMUM SECTIONS. CONTRACTOR SHALL VERIFY EXISTING CONDITIONS AND RESTORE AREAS WITH THE GREATER SECTION.



Revisions	Date

SIGMA GROUP
Single Source, Sound Solutions
www.thismagroup.com
1300 West Canal Street
Milwaukee, WI 53233
Phone: 414-643-4200
Fax: 414-643-4210

HGA
Architecture | Engineering | Planning
Hammel, Green and Associates, Inc.
333 East Erie Street
Milwaukee, Wisconsin USA 53202
Telephone 414.278.8200 Facsimile 414.278.7734

PHASE 3A - 100% CONSTRUCTION DOCUMENTS: JULY 29, 2016

Drawing Title
PHASE 3A - WATER MAIN RESTORATION PLAN

Approved: Division Chief
Approved: Service Director

Project Title
VA HINES MEDICAL CENTER REPLACE EXISTING WATER MAINS PROJECT

Building Number
Checked: JBL
Drawn: TPM

Location
HINES, ILLINOIS

Date
JULY 29, 2016

Project No.
VA# 578-15-032
HGA# 3931-001-00

DRAWING NO.
CU200

Office of Facilities Management
Department of Veterans Affairs