

EDWARD HINES, JR. VA MEDICAL CENTER

HINES, ILLINOIS 60141-5000
VA PROJECT NUMBER - 578-15-032



REPLACE EXISTING WATER MAINS PROJECT

PHASE 3A - CONSTRUCTION DOCUMENTS

JUNE 10, 2016

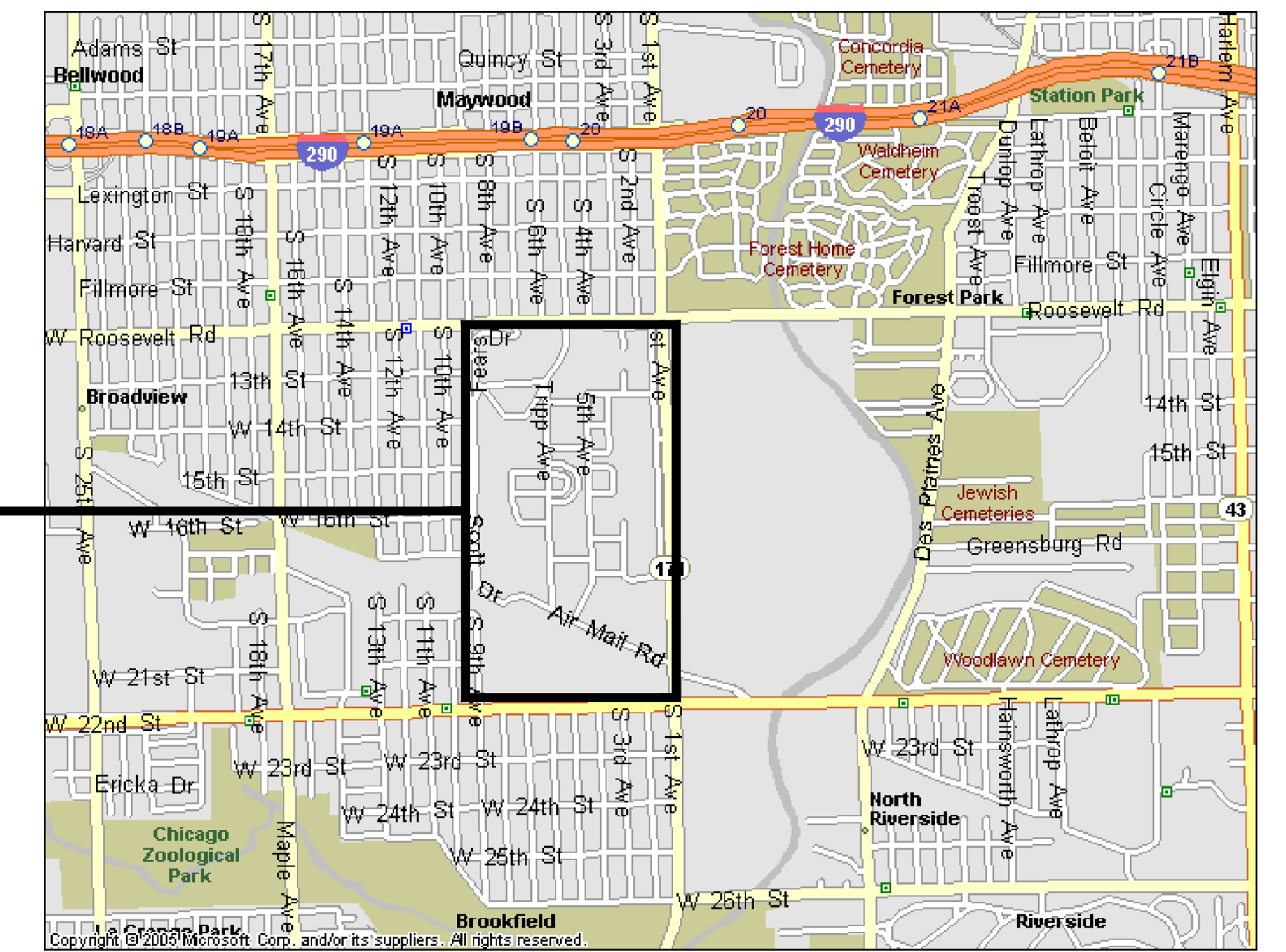
DRAWING INDEX:

GENERAL

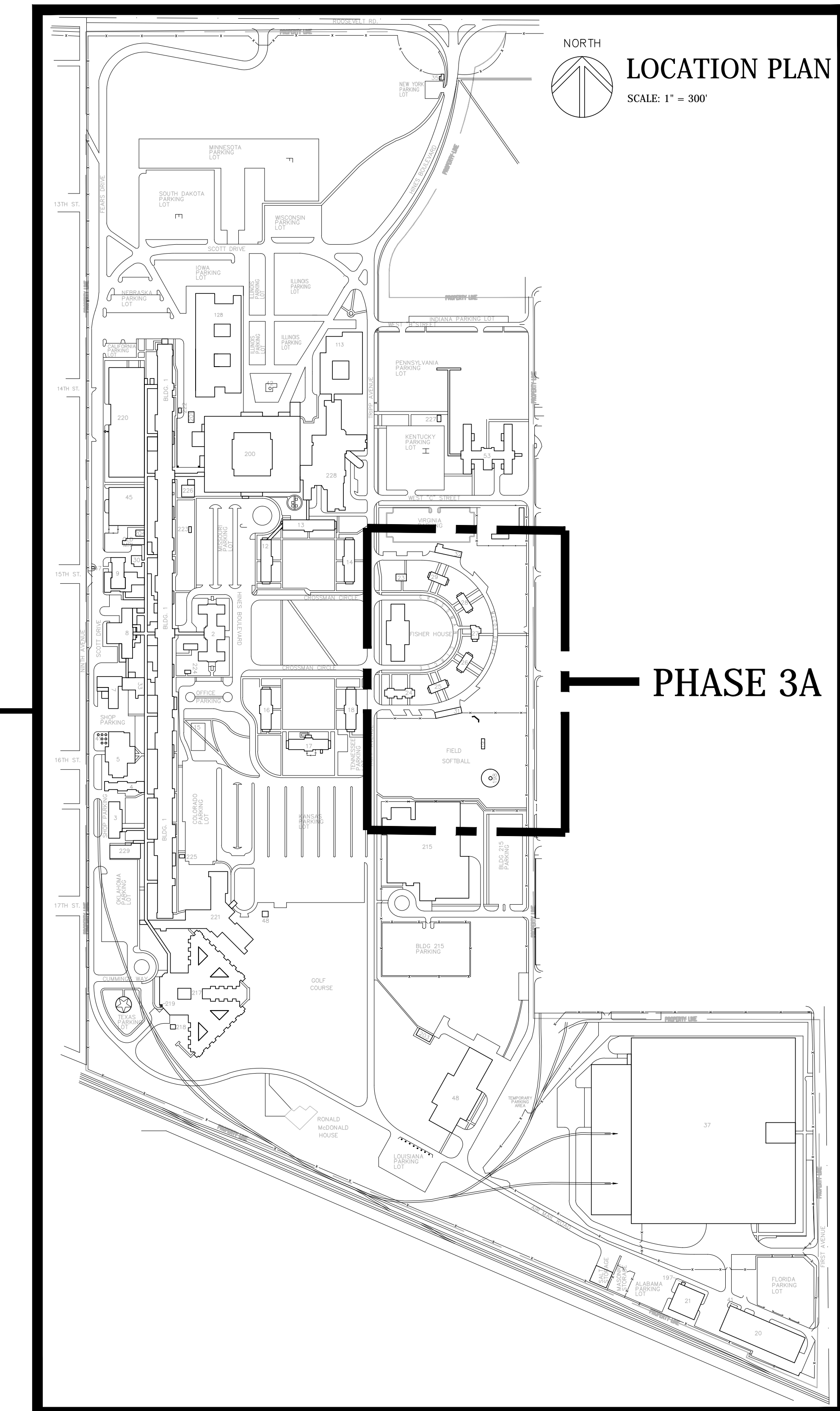
G1-001 PHASE 3A - DRAWING INDEX & VICINITY MAP

CIVIL

- CU001 - PHASE 3A- WATER MAIN GENERAL NOTES
- CU002 - PHASE 3A - WATER MAIN EROSION CONTROL DETAILS
- CU003 - PHASE 3A - WATER MAIN BASE PLAN - SOUTH
- CU004 - EXISTING WATER MAIN NETWORK
- CU005 - PROPOSED OVERALL PHASING PLAN
- CU200 - PHASE 3A - WATER MAIN RESTORATION PLAN
- CU300 - PHASE 3A - WATER MAIN PLAN & PROFILE DRAWING INDEX
- CU301 - PHASE 3A - WATER MAIN PLAN & PROFILE STA:90+00.00 TO STA:95+00.00
- CU302 - PHASE 3A - WATER MAIN PLAN & PROFILE STA:95+00.00 TO STA:98+70.02
- CU400 - PHASE 3A - WATER MAIN DETAILS
- CU401 - PHASE 3A - WATER MAIN DETAILS
- CU402 - PHASE 3A - WATER MAIN DETAILS



VICINITY PLAN



LOCATION PLAN
SCALE: 1" = 300'

PROJECT SIGN-OFF

TITLE	SIGNATURE	DATE
HOSPITAL DIRECTOR	_____	_____
CHIEF OF PROJECT PLANNING	_____	_____
CHIEF OF FACILITY MANAGEMENT SERVICES	_____	_____
CHIEF OF STAFF	_____	_____
ASSISTANT DIRECTOR	_____	_____
ASSOCIATE DIRECTOR	_____	_____
PROJECT ENGINEER	_____	_____

Revisions	Date

Single Source. Sound Solutions.
www.thesigmagroup.com
1300 West Canal Street
Milwaukee, WI 53233
Phone: 414-643-4200
Fax: 414-643-4210

Architecture | Engineering | Planning
Hammer, Green and Abramson, Inc.
333 East Erie Street
Milwaukee, Wisconsin USA 53202
Telephone 414.278.8200 Facsimile 414.278.7734

PHASE 3A - 100% CONSTRUCTION DOCUMENTS: JULY 29, 2016

Drawing Title PHASE 3A - DRAWING INDEX & VICINITY MAP	Project Title VA HINES MEDICAL CENTER REPLACE EXISTING WATER MAINS PROJECT	Date JULY 29, 2016	Project No. VA# 578-15-032 HGA# 3931-001-00	Office of Facilities Management	Department of Veterans Affairs
Approved: Division Chief _____ Approved: Service Director _____	Building Number _____ Checked _____ Drawn _____	DRAWING NO. G1-001		Location HINES, ILLINOIS	