

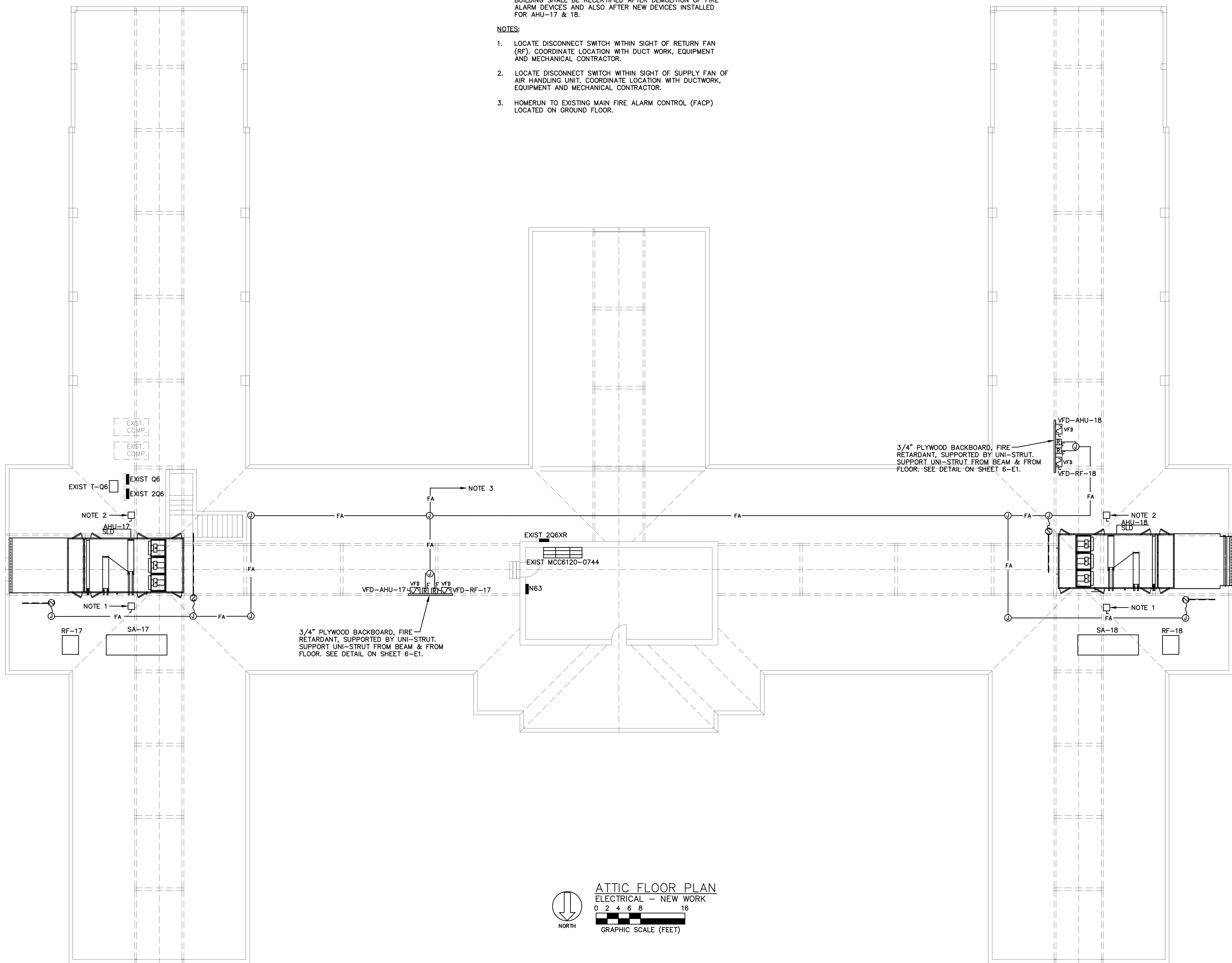
three inches = one foot
one and one-half inches = one foot
one inch = one foot
three-quarters inch = one foot
one-half inch = one foot
three-eighths inch = one foot
one-quarter inch = one foot
one-eighth inch = one foot

GENERAL NOTES:

1. PROVIDE FIRE ALARM SMOKE DUCT DETECTOR IN RETURN AND SUPPLY DUCT OF AHU-17 & 18. PROVIDE SHUTDOWN RELAY AND INDICATOR LIGHT AS REQUIRED. VERIFY EXACT LOCATION OF SMOKE DUCT DETECTOR AND SAMPLING TUBE IN SUPPLY AND RETURN DUCT WITH MECHANICAL CONTRACTOR. CONNECT SMOKE DUCT DETECTORS AND RELAYS TO EXISTING FIRE ALARM CONTROL PANEL (FACP). FIRE ALARM SYSTEM FOR THE BUILDING SHALL BE RECERTIFIED AFTER DEMOLITION OF FIRE ALARM DEVICES AND ALSO AFTER NEW DEVICES INSTALLED FOR AHU-17 & 18.

NOTES:

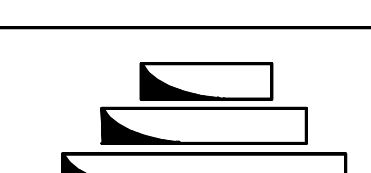
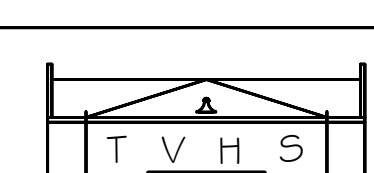

1. LOCATE DISCONNECT SWITCH WITHIN SIGHT OF RETURN FAN (RF). COORDINATE LOCATION WITH DUCT WORK, EQUIPMENT AND MECHANICAL CONTRACTOR.
2. LOCATE DISCONNECT SWITCH WITHIN SIGHT OF SUPPLY FAN OF AIR HANDLING UNIT. COORDINATE LOCATION WITH DUCTWORK, EQUIPMENT AND MECHANICAL CONTRACTOR.
3. HOMERUN TO EXISTING MAIN FIRE ALARM CONTROL (FACP) LOCATED ON GROUND FLOOR.



ATTIC FLOOR PLAN
ELECTRICAL - NEW WORK
0 2 4 6 8 16
GRAPHIC SCALE (FEET)



CONSTRUCTION DOCUMENTS

REV. A - ADDENDUM #1		3/21/12	<div><div>Tennessee Valley Healthcare System</div></div>		<div><div>Murfreesboro Campus</div></div>	<div><div>Salinger Engineering Group, P.C. 1381 ALBY DRIVE, SUITE 100 MURFREESBORO, TENNESSEE 37132 www.salingerengineering.com PROJECT 11-37</div></div>	Drawing Title ATTIC PLAN- NEW WORK - ELECTRICAL		Project Title REPLACE ATTIC AHU's- BLDG 6		Date 03/21/2012	Veterans Administration		
						Approved: --		Approved: Facility Manager		Building Number 6	Checked JBS		Drawn AL	Project No. 62BA4-11-204
						Approved: --		Approved: Director		Location VAMC - MURFREESBORO	DRAWING NO. 6-E7		FILE NAME	
Revisions		Date												