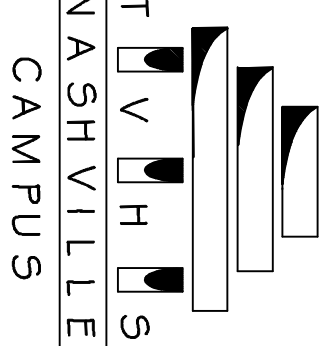


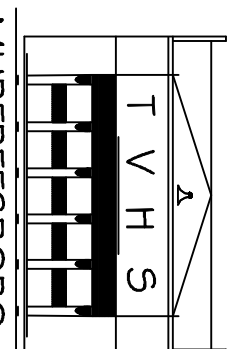
REVISION A - ADDENDUM NO. 1 - 3/21/12

Revisions	
Date	



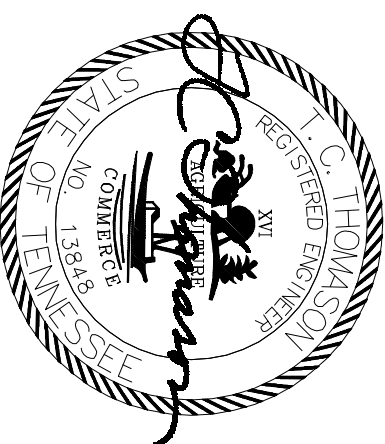
T	V	H	S
NASHVILLE			
CAMPUS			

Tennessee Valley Healthcare System

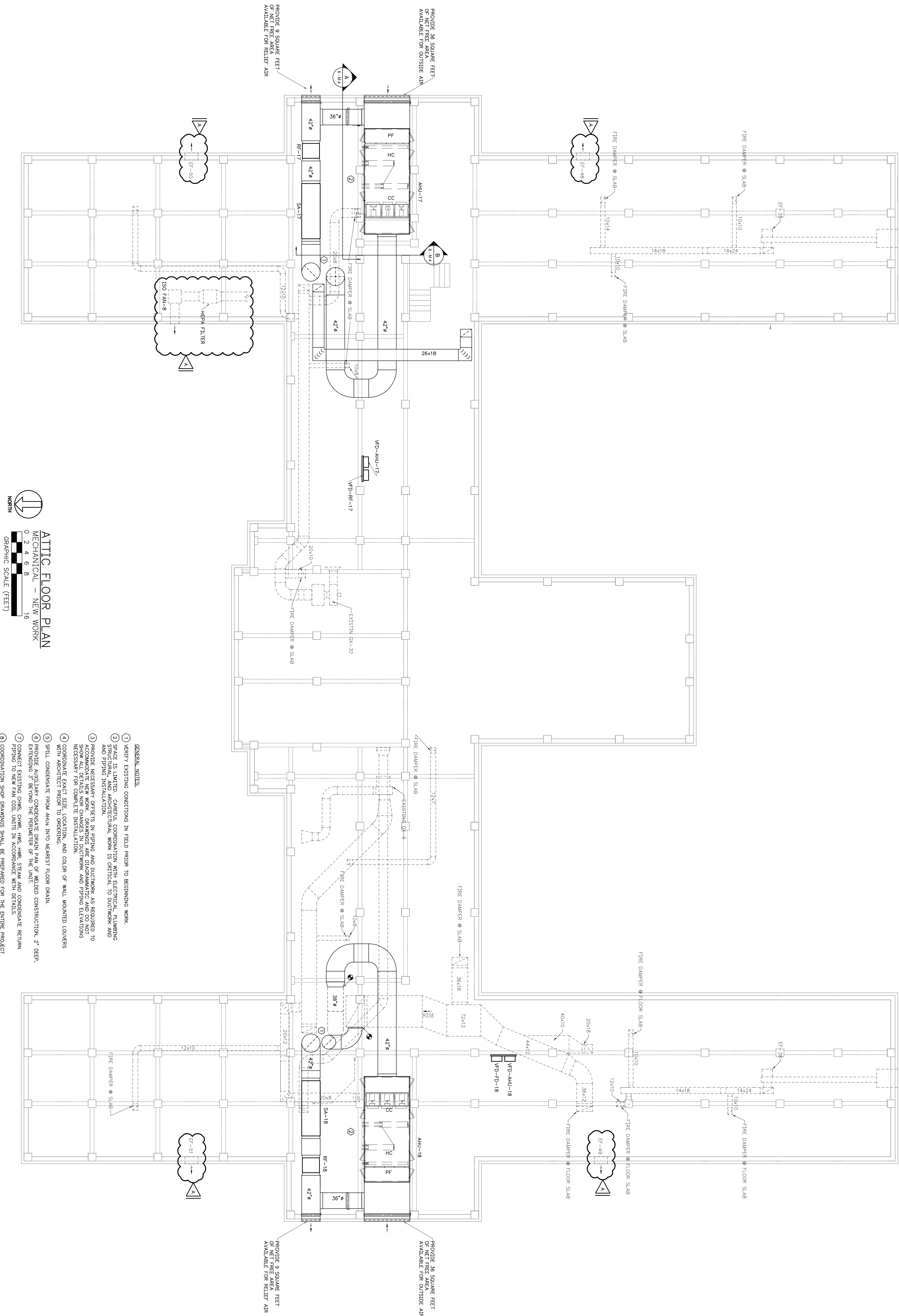


MURFREESBORO
CAMPUS

Tennessee Valley Healthcare System MURFREESBORO CAMPUS			Drawing Title NEW WORK FLOOR PLAN			Project Title REPLACE ATTIC AHUS BUILDING 6			Date 01/20/2012						
Approved: --			Approved: Facility Manager			Building Number 6			Checked TCT		Drawn SPR		Project No. 6254A-11-204		
Approved: --			Approved: Director			Location TWS - YORK CAMPUS			DRAWING NO. 6-M-3			FILE NAME 1027W01			
Veterans Administration															



CONSTRUCTION DOCUMENTS



7. VERIFY EXISTING CONDITIONS IN FIELD PRIOR TO BEGINNING WORK.
 8. SPACE IS LIMITED. CAREFUL COORDINATION WITH ELECTRICAL, PLUMBING AND MECHANICAL CONTRACTORS IS REQUIRED TO PREVENT INTERFERENCE WITH EXISTING AND PIPING INSTALLATION.
 9. PROVIDE NECESSARY WORK SPACES IN PIPING AND DUCTWORK AS REQUIRED TO SHOW ALL DETAILS AND CHANGES IN DUCTWORK AND PIPING ELEVATIONS NECESSARY FOR COMPLETE INSTALLATION.
 10. COORDINATE EXACT SIZE, LOCATION, AND COLOR OF WALL MOUNTED DOWNSIES WITH ARCHITECT.
 11. PROVIDE SUFFICIENTLY COMPACTED GRADE AND/OR EXISTING FLOOR GRAIN.
 12. EXISTING ABOVE THE PIPING SHALL BE PROTECTED BY A MINIMUM OF 2" DEEP EXISTING OR NEW CONCRETE OR OTHER PROTECTIVE MEANS.
 13. CONNECT EXISTING CHASE, DRAIN, HWS, HWS, HWS, AND CONDENSATE RETURN PIPING TO NEW/OLD COLD UNITS IN ACCORDANCE WITH DETAILS.
 14. COORDINATION, SUCH AS DRAWINGS SHALL BE PREPARED FOR THE ENTIRE PROJECT DISPOSITION, INCLUDING ELEVATIONS OF DUCTWORK AND PIPING.
- DRAINING NOTES:**
1. SEE RESEAL DRAWING ON DRAINING 6-W/9 FOR TIE-IN TO EXISTING RETURN IN CHASE.
 2. SEE LARGE SCALE PLANS DRAINING 6-W/9 FOR PIPING CONNECTIONS.

DRAWING NOTES:

① SEE RISER DIAGRAM ON DRAWING 6-M9 FOR TIE-IN TO EXISTING RETURN IN CHASE.

② SEE LARGE SCALE PLANS DRAWING 6-M7 FOR PIPING CONNECTIONS

ATTIC FLOOR PLAN
MECHANICAL - NEW WORK
0 2 4 6 8 16
GRAPHIC SCALE (FEET)