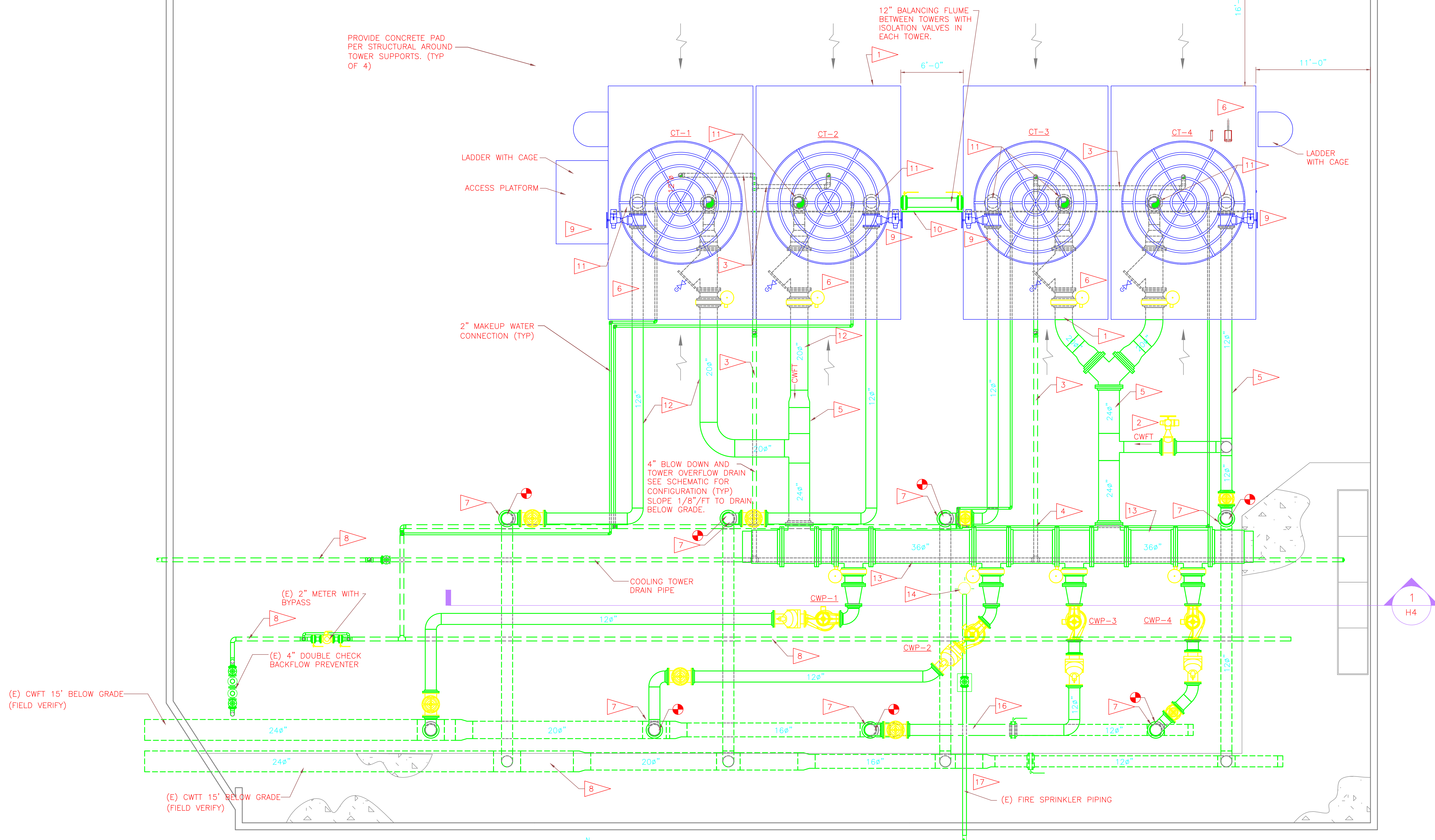
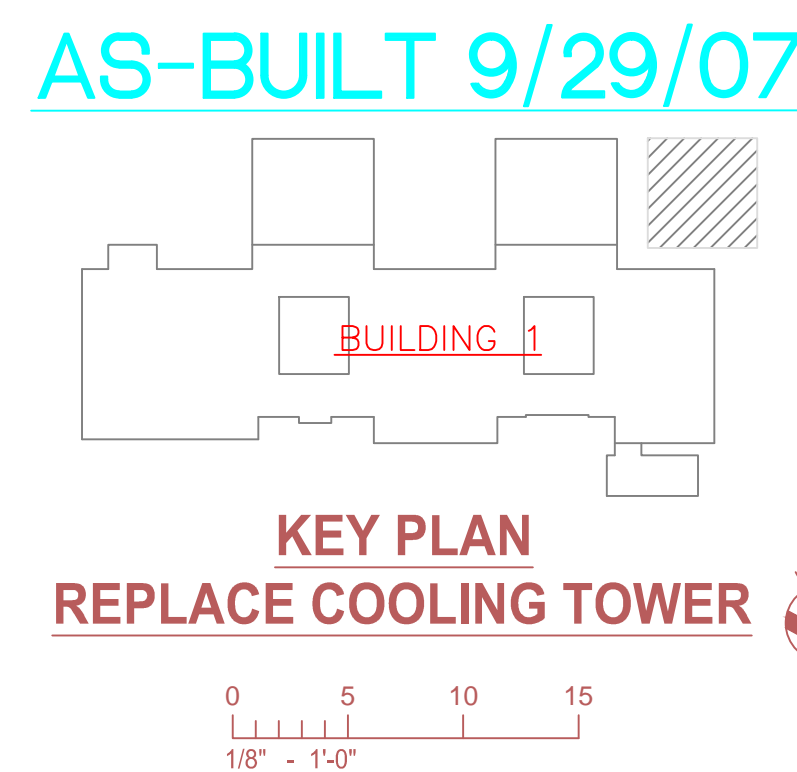
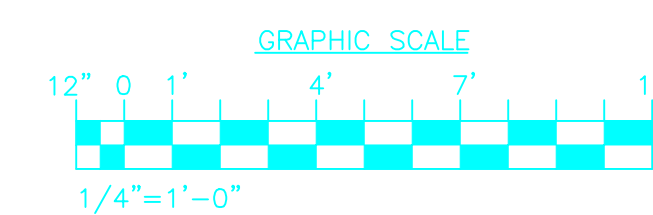


P O.L	P O.L	BLK
B O.L	B O.V	GRN
K O.L	K O.V	BLK
PP O.L	FP O.V	RED



FLAG NOTES:


- | | | | | | |
|---|--|----|---|----|--|
| 1 | SEE STRUCTURAL DRAWING FOR COOLING TOWER FOUNDATION AND FRAMING PLANS AND DETAILS. | 7 | CONNECTION TO EXISTING CONDENSER WATER PIPE AT GRADE PROVIDING NEW ISOLATION VALVES. | 15 | CONTRACTOR SHALL SUBMIT PIPING FABRICATION DRAWINGS AFTER VERIFYING ALL DIMENSIONS OF EQUIPMENT, SUPPORT STRUCTURE, ETC. |
| 2 | CONDENSER BYPASS WATER CONTROL VALVE. PROVIDE NEW PNEUMATIC ACTUATOR AND CONTROLS. | 8 | EXISTING PIPING BELOW GRADE. | 16 | NEW CWFT PIPE FROM <u>CWP-3</u> RUNS ABOVE GRADE OVER (E) CWFT PIPE. |
| 3 | ROUTE TOWER DRAIN AND OVERFLOW TO EXISTING COOLING TOWER DRAIN. | 9 | REUSE EXISTING PNEUMATIC ACTUATORS FOR WITH NEW CONTROL VALVES. | 17 | EXISTING ISOLATION VALVES TO REMAIN. |
| 4 | PROVIDE ISOLATION VALVE ALLOWING FOR INSTALLATION OF NEW TOWERS DURING DIFFERENT PHASES. | 10 | EXTEND EXISTING CONTROL AIR CURRENTLY USED FOR BYPASS VALVE TO NEW LOCATION OF ISOLATION VALVE. | | |
| 5 | ROUTE PIPING WITH SLIGHT SLOPE TOWARD PUMPS WITH ECCENTRIC REDUCERS (TOP FLAT) TO ELIMINATE POSSIBLE AIR ENTRAPMENT. | 11 | SUPPORT PIPE AT THIS LOCATION PER S1 DETAIL ON SHEET 1-H4. | | |
| 6 | INTERIOR MAINTENANCE PLATFORMS BY COOLING TOWER MANUFACTURER | 12 | PIPE SUPPORTED PER S2 DETAIL ON SHEET 1-H4. | | |
| | | 13 | PIPE SUPPORTED PER S3 DETAIL ON SHEET 1-H4. | | |
| | | 14 | EXISTING FIRE HYDRANT | | |

[illegible]

CONSULTANTS

ARCHITECTS/ ENGINEERS/ INTERIOR DESIGN

Cape Design Engineering Co.
191 Center St. Ste. 201
Cape Canaveral, FL 32920
Phone: (321) 799-2970
BUSINESS LICENSE # EB807



DRAWING TITLE

**COOLING TOWER YARD
PLAN**

TITLE	DEPT FOR COORDINATING TOWNSHIP

DATE 09-25-2006

Veterans
Administration