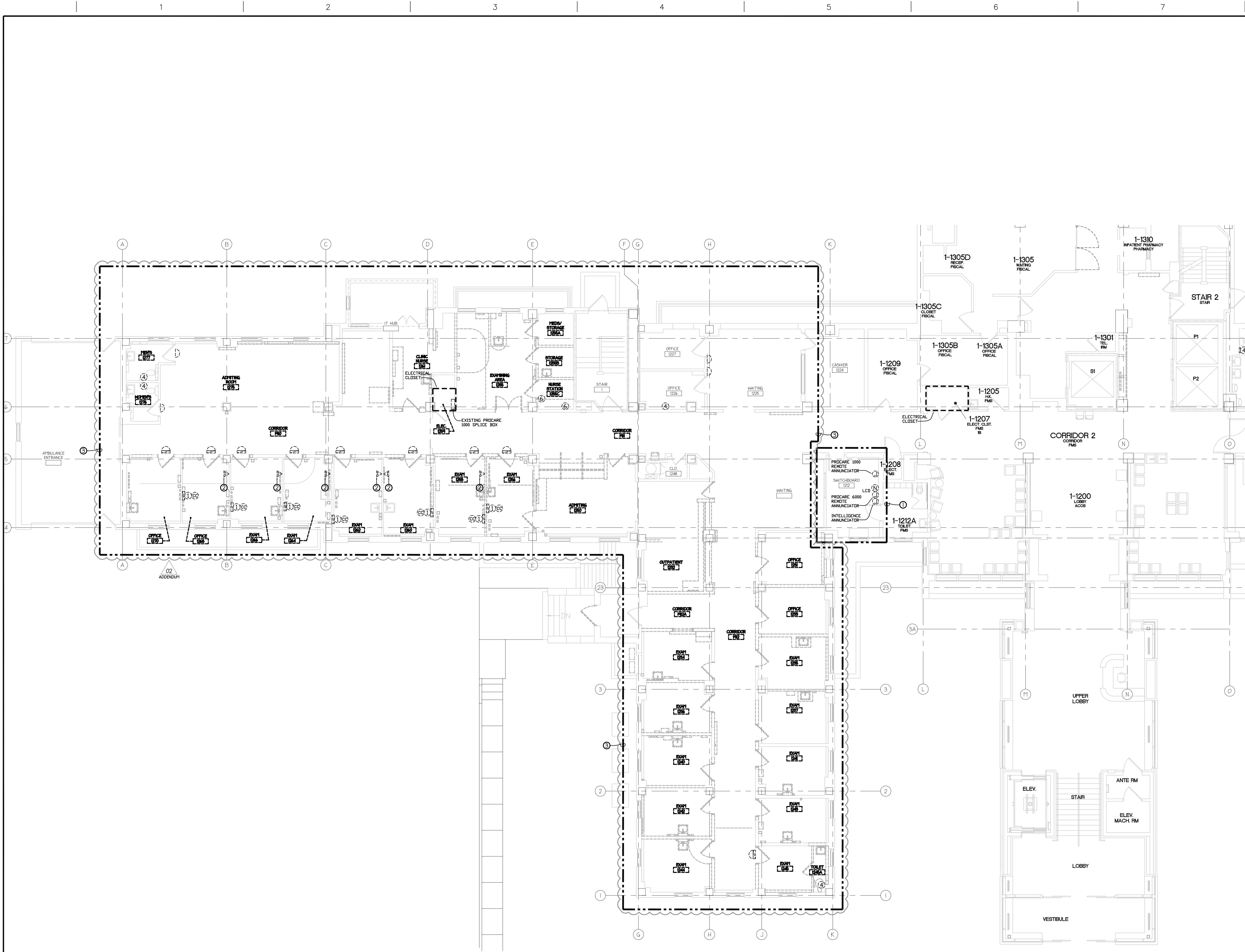


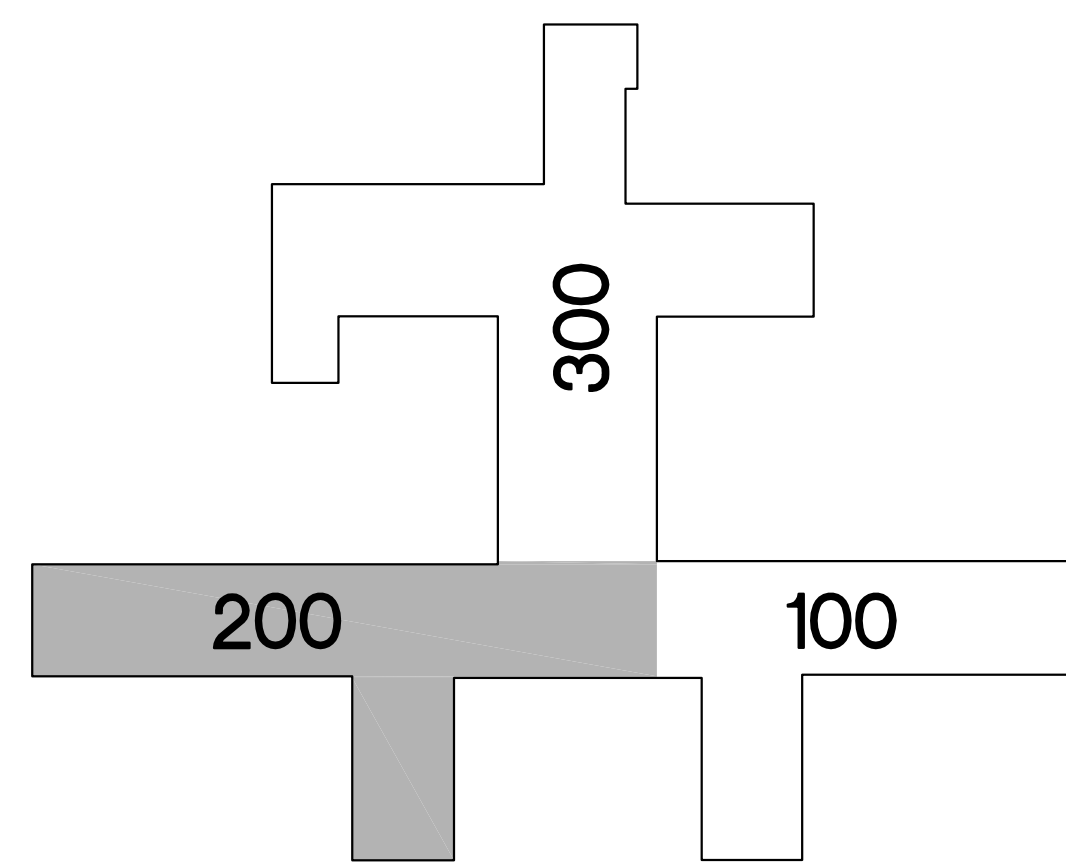
three inches = one foot  
one and one half inches = one foot  
one inch = one foot  
three quarters inch = one foot  
one half inch = one foot  
three eighths inch = one foot  
one quarter inch = one foot  
one eighth inch = one foot



DEMOLITION NURSE CALL PLAN  
BLDG 01 - FIRST LEVEL - SECTION 200  
SCALE: 1/8" = 1'-0"

- SYSTEMS DEMOLITION NOTES:
- GENERAL NOTES:
- WHERE DEVICES ARE SHOWN TO BE DEMOLISHED IN WALLS THAT ARE SHOWN TO REMAIN, REMOVE BOX, CONDUIT, AND CONDUCTORS BACK TO SOURCE. ABANDON CONDUIT IN WALL. PATCH WALL AND PAINT TO MATCH EXISTING. IF THERE ARE OTHER DEVICES REMAINING ON THE BRANCH CIRCUIT, PROTECT THE INTEGRITY OF THE CIRCUIT AND MAINTAIN POWER TO THE DEVICES.
  - DEVICES BEING DEMOLISHED SHALL BE PRESENTED TO OWNER FOR SALVAGE. IF UNWANTED DISPOSE OF DEVICES PROPERLY.
  - DEMOLISH EXISTING NURSE CALL DEVICES AS INDICATED UNLESS IDENTIFIED OTHERWISE ON CONSTRUCTION DRAWING. DEMOLISH ALL ASSOCIATED BOXES, CONDUITS AND CABLES BACK TO SOURCE OR TO THE EXTENT OF WHICH THE INTEGRITY OF ANY DEVICES ARE MAINTAINED.
- KEYED NOTES:
- ROOM IS SUBJECT TO POTENTIAL RENOVATION UNDER SEPARATE PROJECT SCOPE. VERIFY LOCATIONS OF EXISTING DEVICES IN FIELD PRIOR TO REPLACEMENT.
  - EXISTING RECESSED INTERCOM "CALL BOX".
  - THIS AREA IS BEING DEMOLISHED AS PART OF THE SCOPE OF A SIMULTANEOUS PROJECT (EXISTING DEVICES ARE PROVIDED FOR REFERENCE ONLY).

NURSE CALL SYMBOLS		
☼	DOME LIGHT 2G - 1'C	BNL
X:	NONE = WALL (1'H = 2' ABOVE DOOR) C = CEILING Z = ZONE	
①	SINGLE PATIENT STATION 3G - 44" MH - 1'C	BN1
②	DUAL PATIENT STATION 3G - 44" MH - 1'C	BN2
③	DUAL PUSH BUTTON/CUSTOM 1G - 44" MH - 3/4"C	BN3
④	BATH PULL STATION 1G - 44" - 3/4"C (TOILET) 1G - 68" - 3/4"C (SHOWER)	BN4
⑤	DUTY STATION 3G - 44" MH - 3/4"C	BN6
⑦	STAFF STATION 3G - 44" MH - 3/4"C	BN7
⑧	STAFF ASSIST/CODE BLUE 1G - 44" MH - 3/4"C	BN8
⑩	PUSH FOR HELP 1G - 44" MH - 3/4"C	BN10
⑪	STAFF REGISTRATION 1G - 44" MH - 3/4"C	BN11
⑫	N4 JACK 1G - 44" MH - 3/4"C	BN12
⑭	SPECIALTY PLATE	BNM
⑮	MASTER STATION 1G - 44" MH - 3/4"C	BNLCD
⑯	MASTER STATION 1G - 16" MH - 3/4"C	BNTSM
⑰	CODE BLUE 1G - 44" MH - 3/4"C	BNCB
⑱	CODE PINK/BABY MISSING 1G - 44" MH - 3/4"C	BNCP
⑳	BABY MISSING 1G - 44" MH - 3/4"C	BNBM
㉑	STAFF ASSIST 1G - 44" MH - 3/4"C	BNSA
㉒	UNIVERSAL INTERFACE 3G - ABOVE CEILING - 3/4"C	BNU
㉓	CALL CORD	BNCC
㉔	PILLOW SPEAKER	BNPS
㉕	TV CONTROL	BNTV
㉖	3/4"C PATH FROM BED STATION TO TV	BN37
㉗	37 PIN BED CONNECTOR 1G - 16" MH - 3/4"C	BN37
㉘	BED LIGHT CONTROL 3/4"C PATH FROM BED STATION TO LIGHT	BNBL
NCC	NURSE CALL TERMINAL CABINET SURFACE WALL MOUNT 30" x 30" (2) 2"C (1) 20AMP VAC PER CABINET (EMERGENCY) OBTAIN QUANTITY FROM VENDOR	BNUR
##-##-##	GCM#-JBUS#-ID#	BNGCM



35% SCHEMATIC SUBMISSION	03/14/2014
65% DESIGN DEVELOPMENT SUBMISSION	05/23/2014
95% CONSTRUCTION DOCUMENT SUBMISSION	08/08/2014
100% BID DOCUMENT SUBMISSION	05/19/2016
ADDENDUM 02	01/04/2017
Revisions	Date

CONSULTANTS:		ARCHITECT/ENGINEERS:		Drawing Title		Project Title		Project Number		Office of Construction and Facilities Management
		<div><div>DIEKEMA HAMANN architecture+engineering 612 South Park Street Kalamazoo, Michigan 49007 15 Ionia Ave SW Grand Rapids, Michigan 49503 TL 269.373.1108 FX 269.373.1186</div></div>		DEMOLITION NURSE CALL PLAN BLDG 01 - FIRST LEVEL - SECTION 200		NURSE CALL SYSTEM REPLACEMENT BUILDINGS 1 AND 22		655-13-113		
				Approved Project Director		Location ALEDA E. LUTZ VA MEDICAL CENTER		Building Number 01		
						Date MAY 19, 2016		Checked PN		
						Drawn SH		Drawing Number 01-ES5 Dwg. 7 of 45		

 Department of  
Veterans Affairs