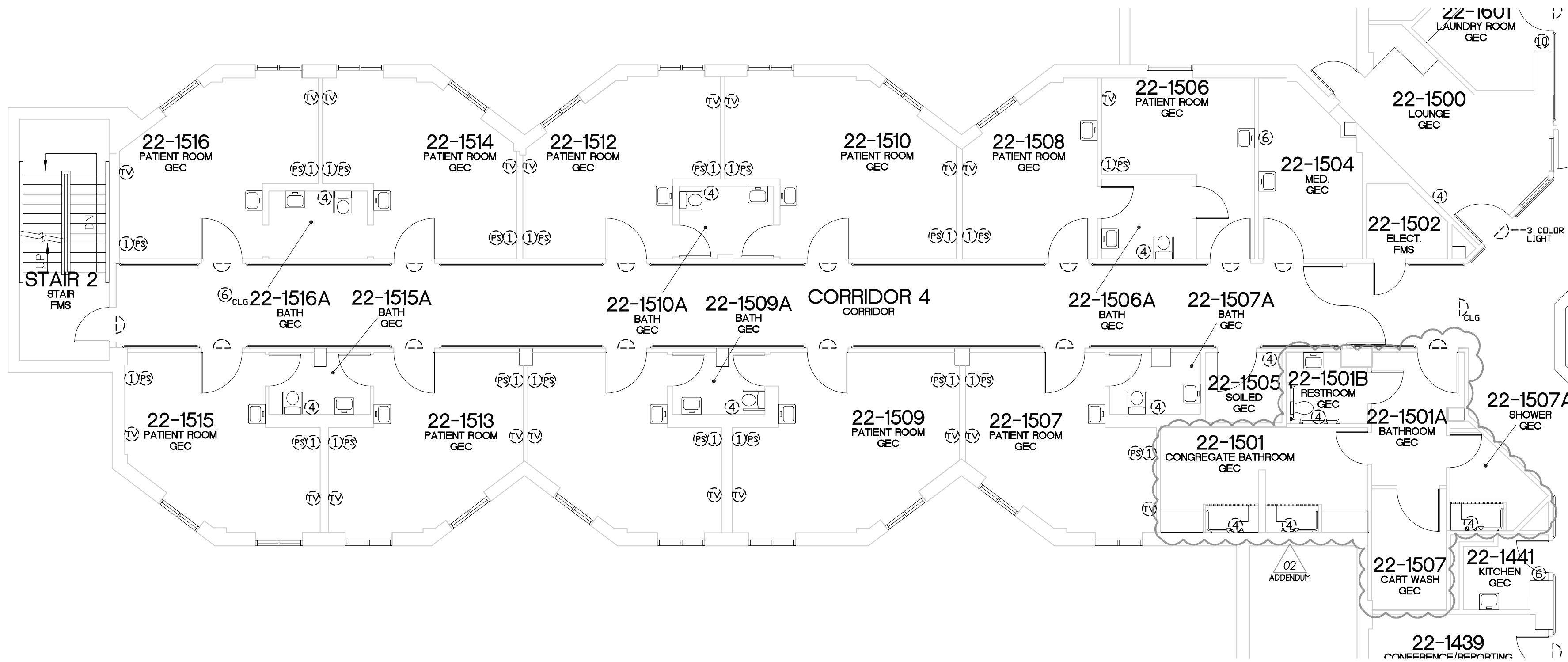


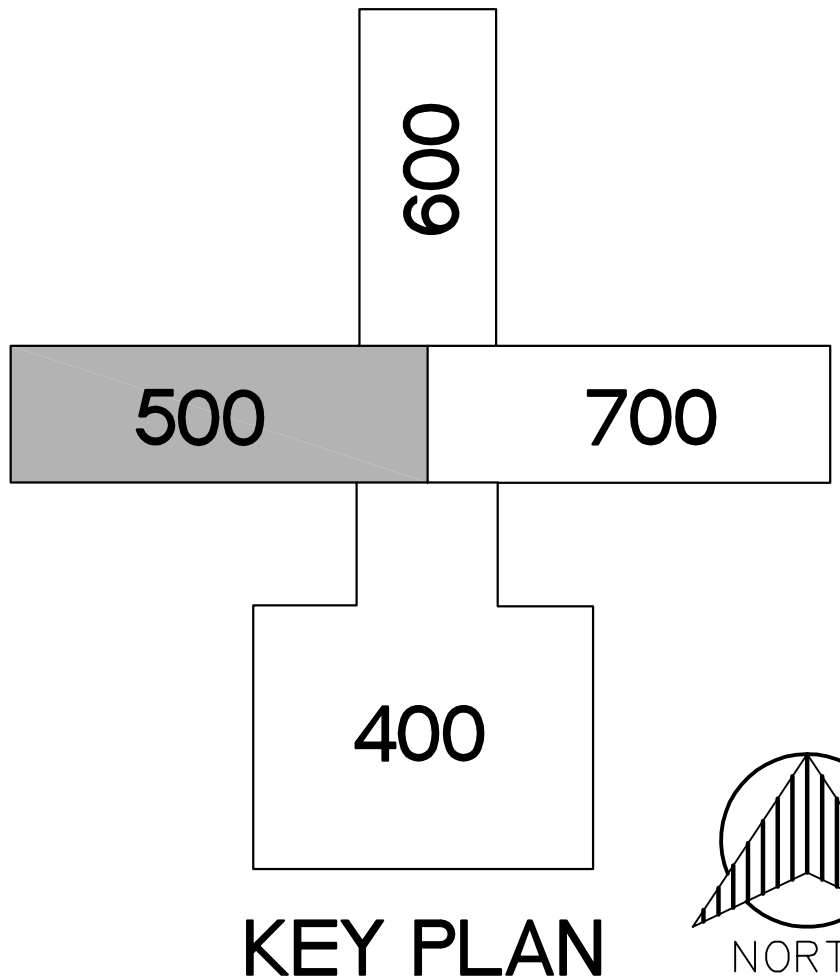
three inches = one foot
one and one half inches = one foot
one inch = one foot
three quarters inch = one foot
one half inch = one foot
three eighths inch = one foot
one quarter inch = one foot
one eighth inch = one foot



DEMOLITION NURSE CALL PLAN
BLDG 22 - FIRST LEVEL - SECTION 500
SCALE: 1/8" = 1'-0"

- SYSTEMS DEMOLITION NOTES:
- GENERAL NOTES:
- WHERE DEVICES ARE SHOWN TO BE DEMOLISHED IN WALLS THAT ARE SHOWN TO REMAIN, REMOVE BOX, CONDUIT, AND CONDUCTORS BACK TO SOURCE. ABANDON CONDUIT IN WALL. PATCH WALL AND PAINT TO MATCH EXISTING. IF THERE ARE OTHER DEVICES REMAINING ON THE BRANCH CIRCUIT, PROTECT THE INTEGRITY OF THE CIRCUIT AND MAINTAIN POWER TO THE DEVICES.
 - DEVICES BEING DEMOLISHED SHALL BE PRESENTED TO OWNER FOR SALVAGE. IF UNWANTED DISPOSE OF DEVICES PROPERLY.
 - DEMOLISH EXISTING NURSE CALL DEVICES AS INDICATED UNLESS IDENTIFIED OTHERWISE ON CONSTRUCTION DRAWING. DEMOLISH ALL ASSOCIATED BOXES, CONDUITS AND CABLES BACK TO SOURCE OR TO THE EXTENT OF WHICH THE INTEGRITY OF ANY DEVICES ARE MAINTAINED.
- KEYED NOTES:
- DEMOLISH EXISTING NURSE CALL CPU & POWER SUPPLIES AND PAGING INTERFACE. PHASE DEMOLITION WITH COMPLETION OF NEW SYSTEM INTEGRATION TO MAINTAIN CARE PROVIDER FUNCTION.

NURSE CALL SYMBOLS		
	DOME LIGHT 2G - 1'C	BNDL
X	NONE = WALL (1'H = 2' ABOVE DOOR) C = CEILING	
1	SINGLE PATIENT STATION 3G - 44" MH - 1'C	BN1
2	DUAL PATIENT STATION 3G - 44" MH - 1'C	BN2
3	DUAL PUSH BUTTON/CUSTOM 1G - 44" MH - 3/4"C	BN3
4	BATH PULL STATION 1G - 44" - 3/4"C (TOILET) 1G - 68" - 3/4"C (SHOWER)	BN4
5	DUTY STATION 3G - 44" MH - 3/4"C	BN6
7	STAFF STATION 3G - 66" MH - 3/4"C	BN7
8	STAFF ASSIST/CODE BLUE 1G - 44" MH - 3/4"C	BN8
10	PUSH FOR HELP 1G - 44" MH - 3/4"C	BN10
11	STAFF REGISTRATION 1G - 44" MH - 3/4"C	BN11
12	NC4 JACK 1G - 44" MH - 3/4"C	BN12
14	SPECIALTY PLATE	BNM
15	MASTER STATION 1G - 16" MH - 3/4"C	BNLCD
15M	MASTER STATION 1G - 16" MH - 3/4"C	BNTSM
16	CODE BLUE 1G - 44" MH - 3/4"C	BNCB
17	CODE PINK/BABY MISSING 1G - 44" MH - 3/4"C	BNCP
18	BABY MISSING 1G - 44" MH - 3/4"C	BNBM
19	STAFF ASSIST 1G - 44" MH - 3/4"C	BNSA
20	UNIVERSAL INTERFACE 3G - ABOVE CEILING - 3/4"C	BNU
21	CALL CORD	BNCC
22	PILLOW SPEAKER	BNPS
23	TV CONTROL 3/4"C PATH FROM BED STATION TO TV	BNTV
24	37 PIN BED CONNECTOR 1G - 16" MH - 3/4"C	BN37
25	BED LIGHT CONTROL 3/4"C PATH FROM BED STATION TO LIGHT	BNEL
NCC	NURSE CALL CONTROL CABINET SURFACE WALL MOUNT 30" x 30" (2) 2"C (1) 20AMP VAC PER CABINET (EMERGENCY) OBTAIN QUANTITY FROM VENDOR	BNUR
26-28	GC#1#-JBUS#-1D#	BNGCM



100% BID DOCUMENTS - FOR CONSTRUCTION

35% SCHEMATIC SUBMISSION 03/14/2014	CONSULTANTS:	ARCHITECT/ENGINEERS:	Drawing Title DEMOLITION NURSE CALL PLAN BLDG 22 - FIRST LEVEL - SECTION 500	Project Title NURSE CALL SYSTEM REPLACEMENT BUILDINGS 1 AND 22	Project Number 655-13-113	Office of Construction and Facilities Management
65% DESIGN DEVELOPMENT SUBMISSION 05/23/2014						
95% CONSTRUCTION DOCUMENT SUBMISSION 08/08/2014						
100% BID DOCUMENT SUBMISSION 05/19/2016						
ADDENDUM 02 01/04/2017						
Revisions	Date		Approved Project Director	Location ALED A. LUTZ VA MEDICAL CENTER	Drawing Number 22-ES6 Dwg. 8 of 27	Department of Veterans Affairs
				Date MAY 19, 2016	Checked PN	