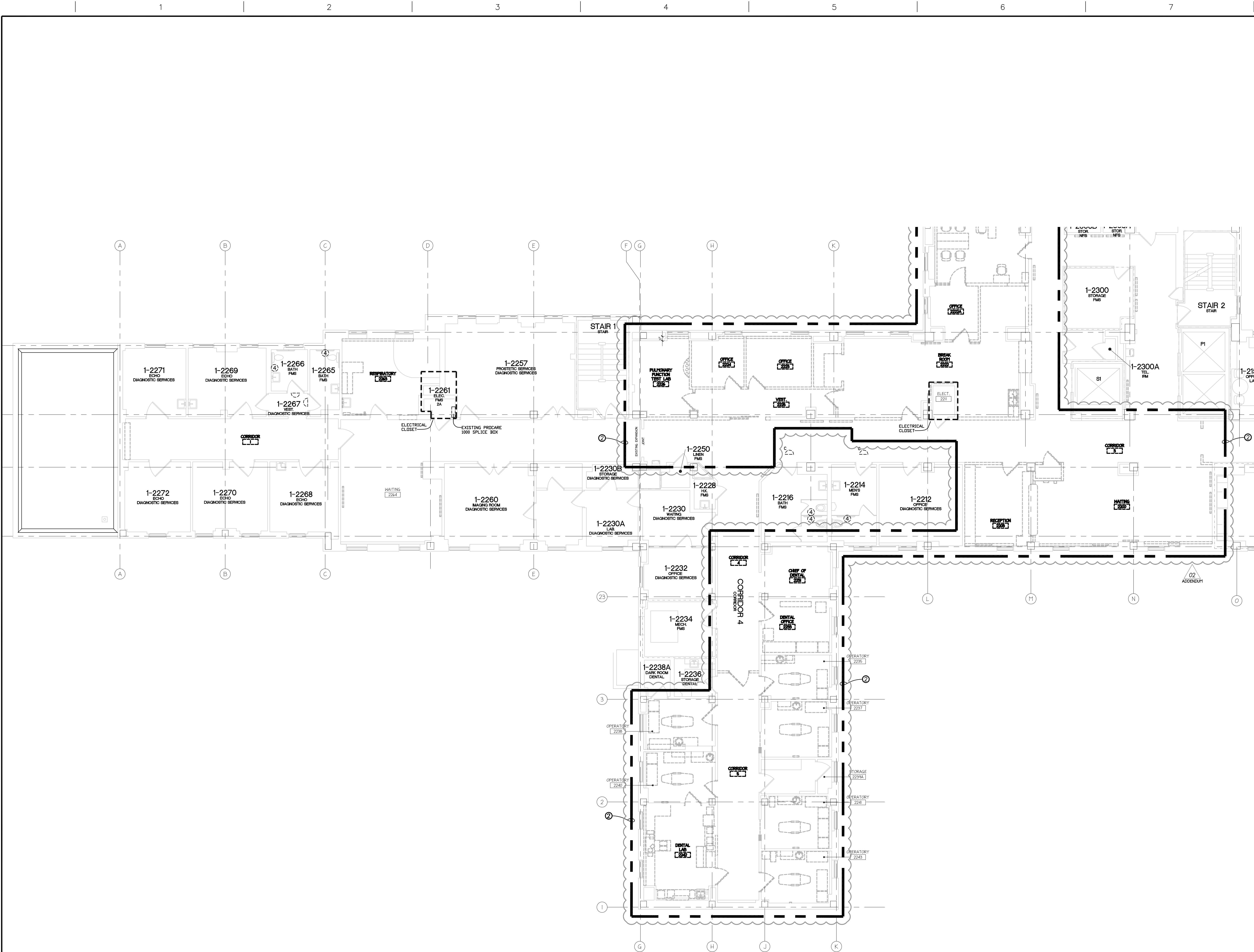


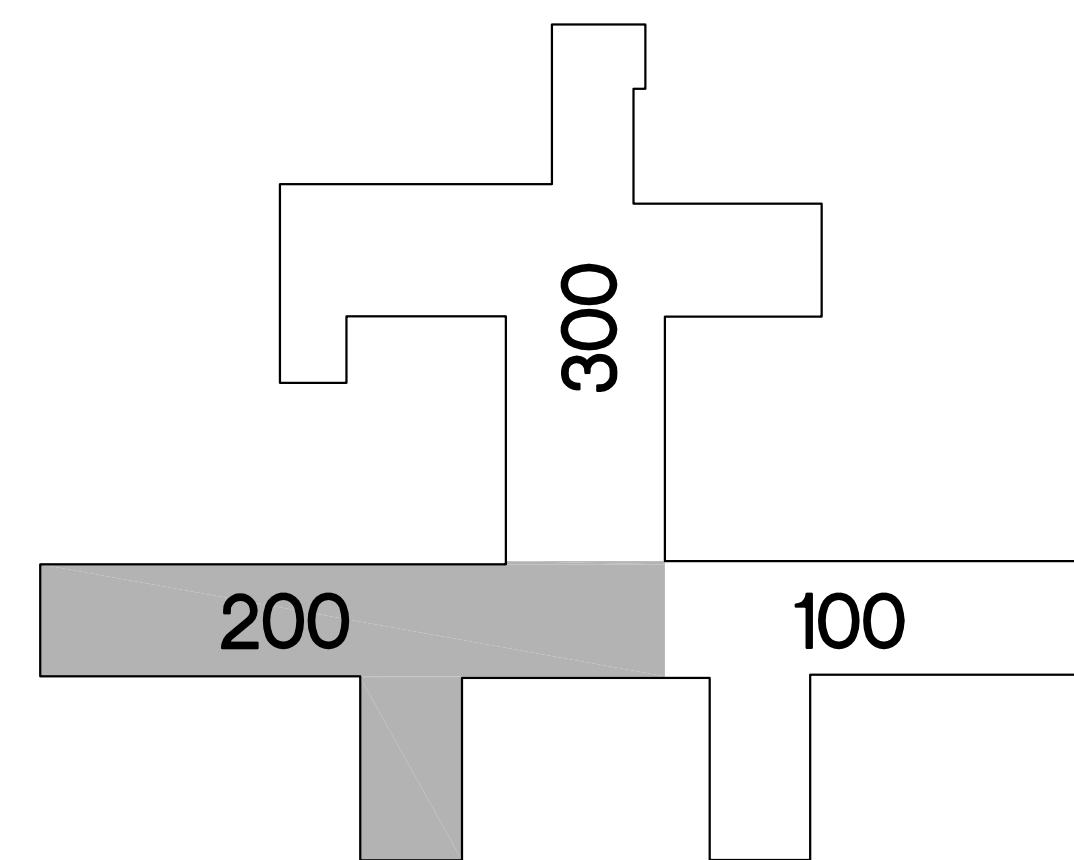
three inches = one foot
one and one half inches = one foot
one inch = one foot
three quarters inch = one foot
one half inch = one foot
three eighths inch = one foot
one quarter inch = one foot
one eighth inch = one foot



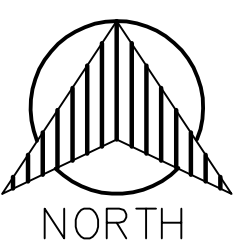
DEMOLITION NURSE CALL PLAN
BLDG 01 - SECOND LEVEL - SECTION 200
SCALE: 1/8" = 1'-0"

- SYSTEMS DEMOLITION NOTES:**
- GENERAL NOTES:**
- WHERE DEVICES ARE SHOWN TO BE DEMOLISHED IN WALLS THAT ARE SHOWN TO REMAIN, REMOVE BOX, CONDUIT, AND CONDUCTORS BACK TO SOURCE. ABANDON CONDUIT IN WALL. PATCH WALL AND PAINT TO MATCH EXISTING. IF THERE ARE OTHER DEVICES REMAINING ON THE BRANCH CIRCUIT, PROTECT THE INTEGRITY OF THE CIRCUIT AND MAINTAIN POWER TO THE DEVICES.
 - DEVICES BEING DEMOLISHED SHALL BE PRESENTED TO OWNER FOR SALVAGE. IF UNWANTED DISPOSE OF DEVICES PROPERLY.
 - DEMOLISH EXISTING NURSE CALL DEVICES AS INDICATED UNLESS IDENTIFIED OTHERWISE ON CONSTRUCTION DRAWING. DEMOLISH ALL ASSOCIATED BOXES, CONDUITS AND CABLES BACK TO SOURCE OR TO THE EXTENT OF WHICH THE INTEGRITY OF ANY DEVICES ARE MAINTAINED.
- KEYED NOTES:**
- DEVICES IN THIS AREA ARE NEW AS A RESULT OF RECENT RENOVATION. DEVICES MAY REMAIN OR BE REPLACED AS REQUIRED, BUT MUST INTEGRATE WITH THE NEW CAMPUS SYSTEM MANUFACTURER.
 - THIS AREA IS BEING DEMOLISHED AS PART OF THE SCOPE OF A SIMULTANEOUS PROJECT (EXISTING DEVICES ARE PROVIDED FOR REFERENCE ONLY).

| NURSE CALL SYMBOLS | | |
|--------------------|--|-------|
| | DOMELIGHT 2G - 1'C | BNL |
| X: | NONE = WALL (1'H = 2' ABOVE DOOR) C = CEILING Z = ZONE | |
| ① | SINGLE PATIENT STATION 3G - 44" MH - 1'C | BN1 |
| ② | DUAL PATIENT STATION 3G - 44" MH - 1'C | BN2 |
| ③ | DUAL PUSH BUTTON/CUSTOM 1G - 44" MH - 3/4"C | BN3 |
| ④ | BATH PULL STATION 1G - 44" - 3/4"C (TOILET) 1G - 68" - 3/4"C (SHOWER) | BN4 |
| ⑤ | DUTY STATION 3G - 44" MH - 3/4"C | BN6 |
| ⑦ | STAFF STATION 3G - 44" MH - 3/4"C | BN7 |
| ⑧ | STAFF ASSIST/CODE BLUE 1G - 44" MH - 3/4"C | BN8 |
| ⑩ | PUSH FOR HELP 1G - 44" MH - 3/4"C | BN10 |
| ⑪ | STAFF REGISTRATION 1G - 44" MH - 3/4"C | BN11 |
| ⑫ | NC4 JACK 1G - 44" MH - 3/4"C | BN12 |
| ⑬ | SPECIALTY PLATE | BNM1 |
| ⑭ | MASTER STATION 1G - 44" MH - 3/4"C | BNLCD |
| ⑮ | MASTER STATION 1G - 16" MH - 3/4"C | BN15M |
| ⑯ | CODE BLUE 1G - 44" MH - 3/4"C | BNCB |
| ⑰ | CODE PINK/BABY MISSING 1G - 44" MH - 3/4"C | BNCP |
| ⑱ | BABY MISSING 1G - 44" MH - 3/4"C | BNBM1 |
| ⑲ | STAFF ASSIST 1G - 44" MH - 3/4"C | BNSA |
| ⑳ | UNIVERSAL INTERFACE 3G - ABOVE CEILING - 3/4"C | BNUI |
| ㉑ | CALL CORD | BNCC |
| ㉒ | PILLOW SPEAKER | BNPS |
| ㉓ | TV CONTROL 3/4"C PATH FROM BED STATION TO TV | BNTV |
| ㉔ | 37 PIN BED CONNECTOR 1G - 16" MH - 3/4"C | BN37 |
| ㉕ | BED LIGHT CONTROL 3/4"C PATH FROM BED STATION TO LIGHT | BNBL |
| ㉖ | NURSE CALL TERMINAL CABINET SURFACE WALL MOUNT 30" x 30" (2) 2"C (1) 20AMP VAC PER CABINET (EMERGENCY) OBTAIN QUANTITY FROM VENDOR | BNUR |
| ㉗ | GCM#-JEUS#-ID# | BNGCM |



KEY PLAN



| | |
|--------------------------------------|------------|
| 35% SCHEMATIC SUBMISSION | 03/14/2014 |
| 65% DESIGN DEVELOPMENT SUBMISSION | 05/23/2014 |
| 95% CONSTRUCTION DOCUMENT SUBMISSION | 08/08/2014 |
| 100% BID DOCUMENT SUBMISSION | 05/19/2016 |
| ADDENDUM 02 | 01/04/2017 |
| Revisions | Date |

| | |
|--------------|--|
| CONSULTANTS: | |
|--------------|--|

| | |
|----------------------|---|
| ARCHITECT/ENGINEERS: | |
| | DIEKEMA HAMANN architecture+engineering 612 South Park Street Kalamazoo, Michigan 49007 15 Ionia Ave SW Grand Rapids, Michigan 49503 TL 269.373.1108 FX 269.373.1186 |

| | |
|---------------------------|---|
| Drawing Title | DEMOLITION NURSE CALL PLAN BLDG 01 - SECOND LEVEL - SECTION 200 |
| Approved Project Director | |

| | |
|-----------------|--|
| Project Title | NURSE CALL SYSTEM REPLACEMENT BUILDINGS 1 AND 22 |
| Project Number | 655-13-113 |
| Building Number | 01 |
| Drawing Number | 01-ES8 Dwg. 10 of 45 |

| |
|---|
| Office of Construction and Facilities Management |
| |