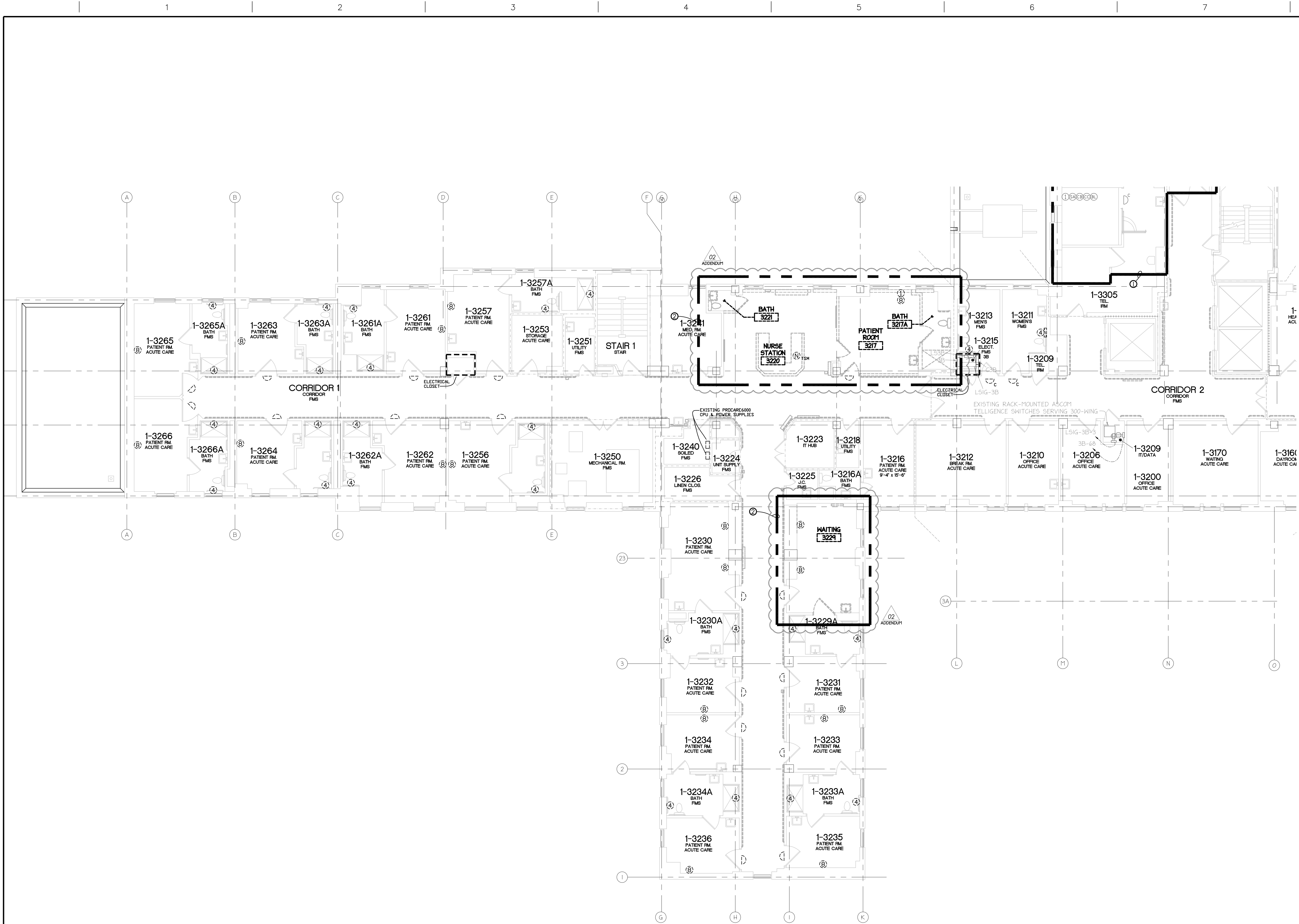


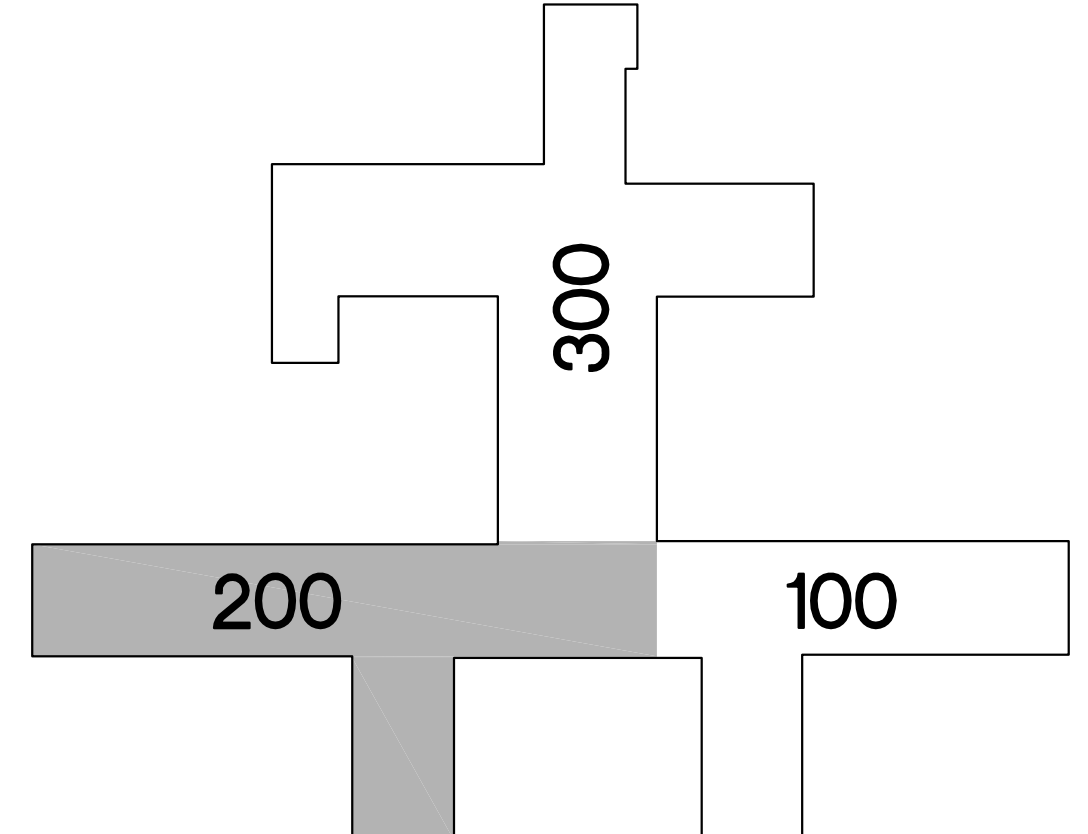
three inches = one foot  
one and one half inches = one foot  
one inch = one foot  
three quarters inch = one foot  
one half inch = one foot  
three eighths inch = one foot  
one quarter inch = one foot  
one eighth inch = one foot



DEMOLITION NURSE CALL PLAN  
BLDG 01 - THIRD LEVEL - SECTION 200  
SCALE: 1/8" = 1'-0"

- SYSTEMS DEMOLITION NOTES:**
- GENERAL NOTES:**
- WHERE DEVICES ARE SHOWN TO BE DEMOLISHED IN WALLS THAT ARE SHOWN TO REMAIN, REMOVE BOX, CONDUIT, AND CONDUCTORS BACK TO SOURCE. ABANDON CONDUIT IN WALL. PATCH WALL AND PAINT TO MATCH EXISTING. IF THERE ARE OTHER DEVICES REMAINING ON THE BRANCH CIRCUIT, PROTECT THE INTEGRITY OF THE CIRCUIT AND MAINTAIN POWER TO THE DEVICES.
  - DEVICES BEING DEMOLISHED SHALL BE PRESENTED TO OWNER FOR SALVAGE. IF UNWANTED DISPOSE OF DEVICES PROPERLY.
  - DEMOLISH EXISTING NURSE CALL DEVICES AS INDICATED UNLESS IDENTIFIED OTHERWISE ON CONSTRUCTION DRAWING. DEMOLISH ALL ASSOCIATED BOXES, CONDUITS AND CABLES BACK TO SOURCE OR TO THE EXTENT OF WHICH THE INTEGRITY OF ANY DEVICES ARE MAINTAINED.
- KEYED NOTES:**
- DEVICES IN THIS AREA ARE NEW AS A RESULT OF RECENT RENOVATION. DEVICES MAY REMAIN OR BE REPLACED AS REQUIRED, BUT MUST INTEGRATE WITH THE NEW CAMPUS SYSTEM MANUFACTURER.
  - THIS AREA IS BEING DEMOLISHED AS PART OF THE SCOPE OF A SIMULTANEOUS PROJECT (EXISTING DEVICES ARE PROVIDED FOR REFERENCE ONLY).

NURSE CALL SYMBOLS		
	DOME LIGHT 2G - 1'C X: NONE = WALL (1'H = 2' ABOVE DOOR) C = CEILING Z = ZONE	BNL
	SINGLE PATIENT STATION 3G - 44" MH - 1'C	BN1
	DUAL PATIENT STATION 3G - 44" MH - 1'C	BN2
	DUAL PUSH BUTTON/CUSTOM 1G - 44" MH - 3/4"C	BN3
	BATH PULL STATION 1G - 44" - 3/4"C (TOILET) 1G - 68" - 3/4"C (SHOWER)	BN4
	DUTY STATION 3G - 44" MH - 3/4"C	BN6
	STAFF STATION 3G - 44" MH - 3/4"C	BN7
	STAFF ASSIST/CODE BLUE 1G - 44" MH - 3/4"C	BN8
	PUSH FOR HELP 1G - 44" MH - 3/4"C	BN10
	STAFF REGISTRATION 1G - 44" MH - 3/4"C	BN11
	NC4 JACK 1G - 44" MH - 3/4"C	BN12
	SPECIALTY PLATE	BNM
	MASTER STATION 1G - 16" MH - 3/4"C	BNLCD
	MASTER STATION 1G - 16" MH - 3/4"C	BN1SM
	CODE BLUE 1G - 44" MH - 3/4"C	BNCB
	CODE PINK/BABY MISSING 1G - 44" MH - 3/4"C	BNCP
	BABY MISSING 1G - 44" MH - 3/4"C	BNEM
	STAFF ASSIST 1G - 44" MH - 3/4"C	BN5A
	UNIVERSAL INTERFACE 3G - ABOVE CEILING - 3/4"C	BNU
	CALL CORD	BNCC
	PILLOW SPEAKER	BNPS
	TV CONTROL 3/4"C PATH FROM BED STATION TO TV	BNTV
	37 PIN BED CONNECTOR 1G - 16" MH - 3/4"C	BN37
	BED LIGHT CONTROL 3/4"C PATH FROM BED STATION TO LIGHT	BNBL
	NURSE CALL TERMINAL CABINET SURFACE WALL MOUNT 30" x 30" (1) 20AMP VAC PER CABINET (EMERGENCY) OBTAIN QUANTITY FROM VENDOR	BNUR
	GCM#-JEUS#-ID#	BNGCM



KEY PLAN



35% SCHEMATIC SUBMISSION	03/14/2014
65% DESIGN DEVELOPMENT SUBMISSION	05/23/2014
95% CONSTRUCTION DOCUMENT SUBMISSION	08/08/2014
100% BID DOCUMENT SUBMISSION	05/19/2016
ADDENDUM 02	01/04/2017
Revisions	Date

CONSULTANTS:	
--------------	--

**ARCHITECT/ENGINEERS:**

**DIEKEMA HAMANN**  
architecture+engineering  
612 South Park Street  
Kalamazoo, Michigan 49007  
15 Ionia Ave SW  
Grand Rapids, Michigan 49503  
TL 269.373.1108  
FX 269.373.1186

Drawing Title	DEMOLITION NURSE CALL PLAN BLDG 01 - THIRD LEVEL - SECTION 200
Approved Project Director	

Project Title	NURSE CALL SYSTEM REPLACEMENT BUILDINGS 1 AND 22
Project Number	655-13-113
Building Number	01
Drawing Number	01-ES11 Dwg. 13 of 45

**Office of  
Construction  
and Facilities  
Management**

Department of  
Veterans Affairs