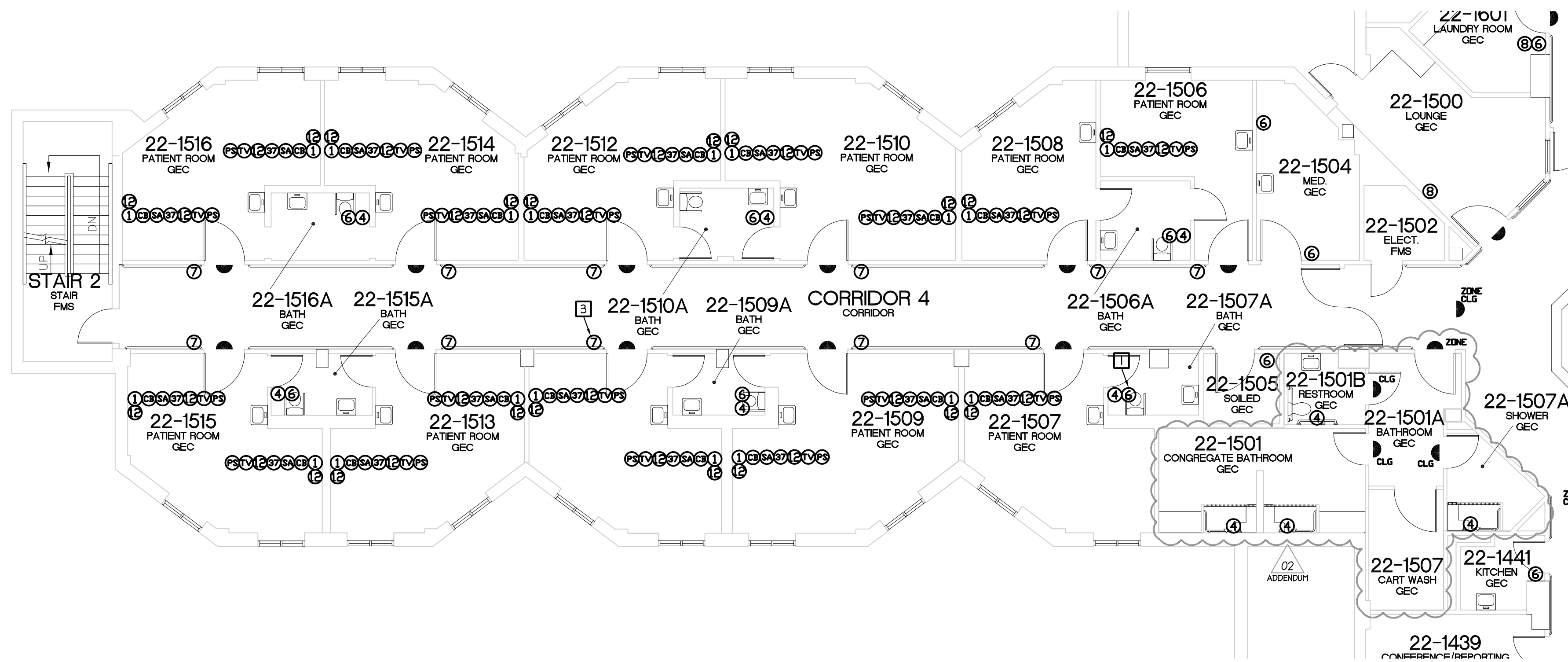


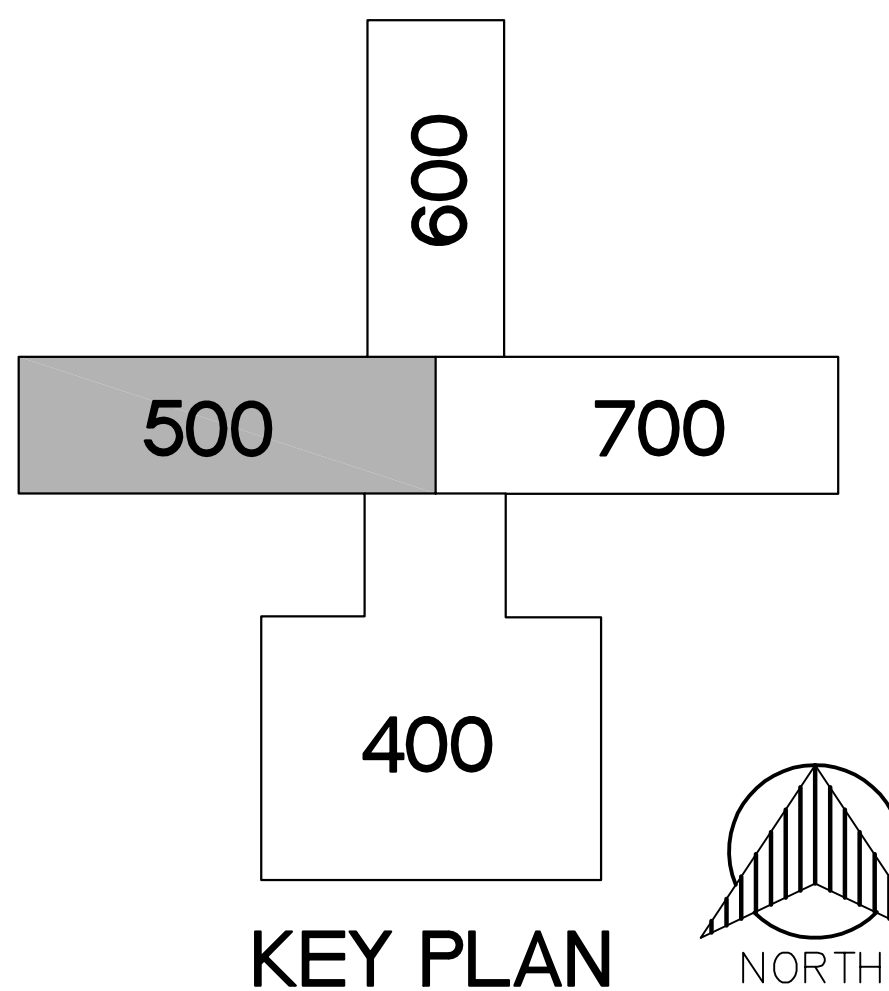
three inches = one foot  
one and one half inches = one foot  
one inch = one foot  
three quarters inch = one foot  
one half inch = one foot  
three eighths inch = one foot  
one quarter inch = one foot  
one eighth inch = one foot



NURSE CALL PLAN  
BLDG 22 - FIRST LEVEL - SECTION 500  
SCALE: 1/8" = 1'-0"

- SYSTEMS NOTES:**
- GENERAL NOTES:**
1. UNLESS OTHERWISE NOTED, COORDINATE EXACT MOUNTING HEIGHTS OF ALL DEVICES WITH ARCHITECTURAL INTERIOR ELEVATIONS.
- ALL NURSE CALL SYSTEM CONDUITS SHALL BE FACTORY APPLIED COLOR YELLOW AND LABELED ON 5' CENTERS PER WRITTEN SPECIFICATIONS (INCLUDING EXISTING CONDUITS BEING RE-USED).
- KEYED NOTES:**
1. ONLY IF MANUFACTURER'S TOILET EMERGENCY STATIONS CANNOT INCLUDE INTEGRAL AUDIO FEATURE, PROVIDE AND INSTALL DUTY STATION ADJACENT TO ALL TOILET EMERGENCY STATIONS TO ALLOW AUDIO COMMUNICATION BETWEEN CARE PROVIDER (TYPICAL ALL TOILET LOCATIONS ON LEVELS 1 & 2 OF BUILDING 22).
2. PROVIDE AND INSTALL CONNECTION TO 4 PROGRAMMING OF MIDDLEWARE FOR AUTOMATIC TRANSMISSION OF ELOPEMENT ALARMS TO CARE PROVIDER MOBILE DEVICES.
3. STAFF STATION ALONG CORRIDOR TO BE LOCATED 66" TO CENTER OF BOX (TYPICAL ALL LOCATIONS IN CORRIDOR ON LEVELS 1 & 2 OF BUILDING 22).

NURSE CALL SYMBOLS		
☯	DOME LIGHT 2G - 1'C X1 NONE - WALL (1'H = 2' ABOVE DOOR) C = CEILING	BNL
①	SINGLE PATIENT STATION 3G - 44" MH - 1'C	BN1
②	DUAL PATIENT STATION 3G - 44" MH - 1'C	BN2
③	DUAL PUSH BUTTON/CUSTOM 1G - 44" MH - 3/4"C	BN3
④	BATH PULL STATION 1G - 44" - 3/4"C (TOILET) 1G - 68" - 3/4"C (SHOWER)	BN4
⑤	DUTY STATION 3G - 44" MH - 3/4"C	BN6
⑦	STAFF STATION 3G - 66" MH - 3/4"C	BN7
⑧	STAFF ASSIST/CODE BLUE 1G - 44" MH - 3/4"C	BN8
⑩	PUSH FOR HELP 1G - 44" MH - 3/4"C	BN10
⑪	STAFF REGISTRATION 1G - 44" MH - 3/4"C	BN11
⑫	NCA JACK 1G - 44" MH - 3/4"C	BN12
⑭	SPECIALTY PLATE	BN1
⑮	MASTER STATION 1G - 16" MH - 3/4"C	BNLCD
⑯	MASTER STATION 1G - 16" MH - 3/4"C	BNTSM
⑰	CODE BLUE 1G - 44" MH - 3/4"C	BNCB
⑱	CODE PINK/BABY MISSING 1G - 44" MH - 3/4"C	BNCP
⑲	BABY MISSING 1G - 44" MH - 3/4"C	BNBM
⑳	STAFF ASSIST 1G - 44" MH - 3/4"C	BNSA
㉑	UNIVERSAL INTERFACE 3G - ABOVE CEILING - 3/4"C	BNU
㉒	CALL CORD	BNCC
㉓	PILLOW SPEAKER	BNPS
㉔	TV CONTROL 3/4"C PATH FROM BED STATION TO TV	BNTV
㉕	37 PIN BED CONNECTOR 1G - 16" MH - 3/4"C	BN37
㉖	BED LIGHT CONTROL 3/4"C PATH FROM BED STATION TO LIGHT	BNBL
㉗	NURSE CALL CONTROL CABINET SURFACE WALL MOUNT 30" x 30" (1) 20AMP VAC PER CABINET (EMERGENCY) OBTAIN QUANTITY FROM VENDOR	BNUR
㉘	GCM#-JBUS#-ID#	BNGCM



100% BID DOCUMENTS - FOR CONSTRUCTION

35% SCHEMATIC SUBMISSION	03/14/2014
65% DESIGN DEVELOPMENT SUBMISSION	05/23/2014
95% CONSTRUCTION DOCUMENT SUBMISSION	08/08/2014
100% BID DOCUMENT SUBMISSION	05/19/2016
ADDENDUM 02	01/04/2017
Revisions	Date

CONSULTANTS:

ARCHITECT/ENGINEERS:



**DIEKEMA HAMANN**  
architecture+engineering  
612 South Park Street  
Kalamazoo, Michigan 49007  
15 Ionia Ave SW  
Grand Rapids, Michigan 49503  
TL 269.373.1108  
FX 269.373.1186

Drawing Title  
NURSE CALL PLAN  
BLDG 22 - FIRST LEVEL -  
SECTION 500

Approved Project Director

Project Title  
NURSE CALL SYSTEM  
REPLACEMENT  
BUILDINGS 1 AND 22

Location  
ALED A E. LUTZ VA MEDICAL CENTER

Date  
MAY 19, 2016

Checked  
PN

Drawn  
SH

Project Number  
655-13-113

Building Number  
22

Drawing Number  
22-ES18  
Dwg. 20 of 27

Office of  
Construction  
and Facilities  
Management

