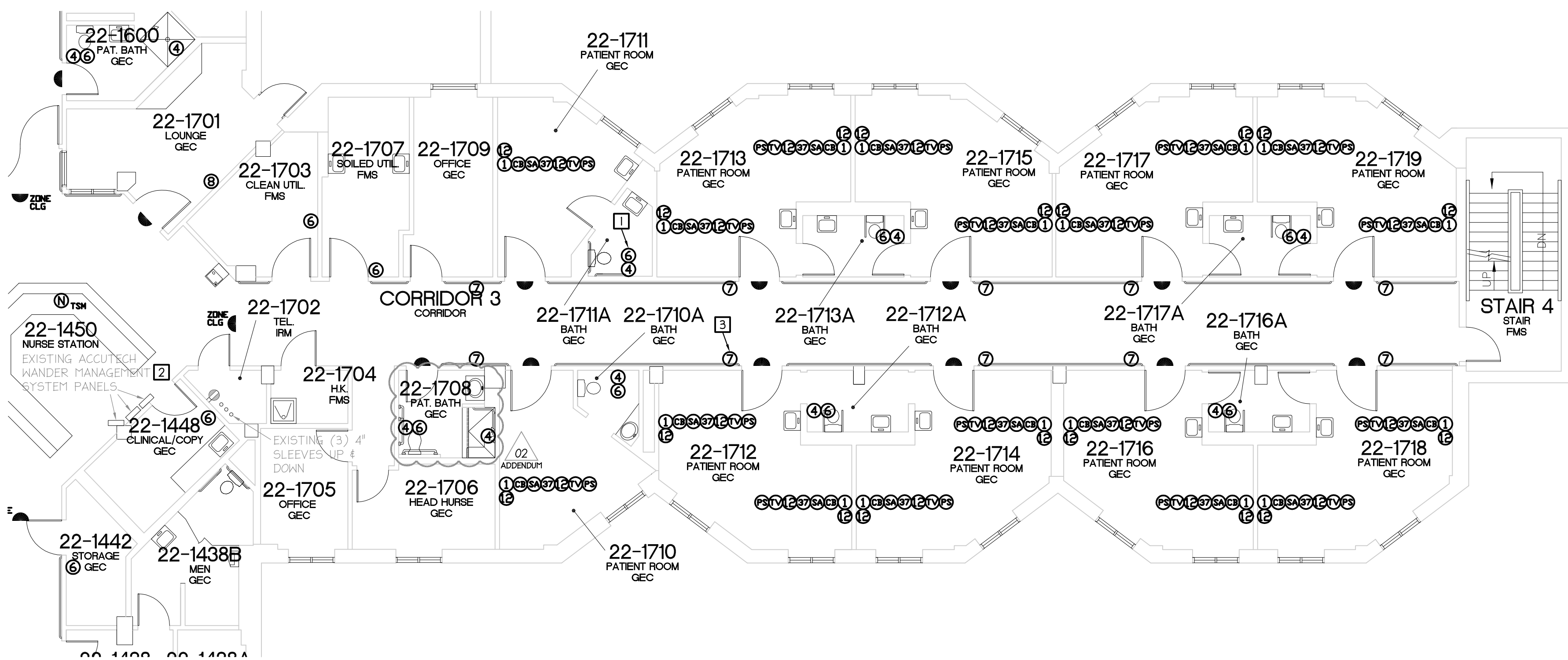


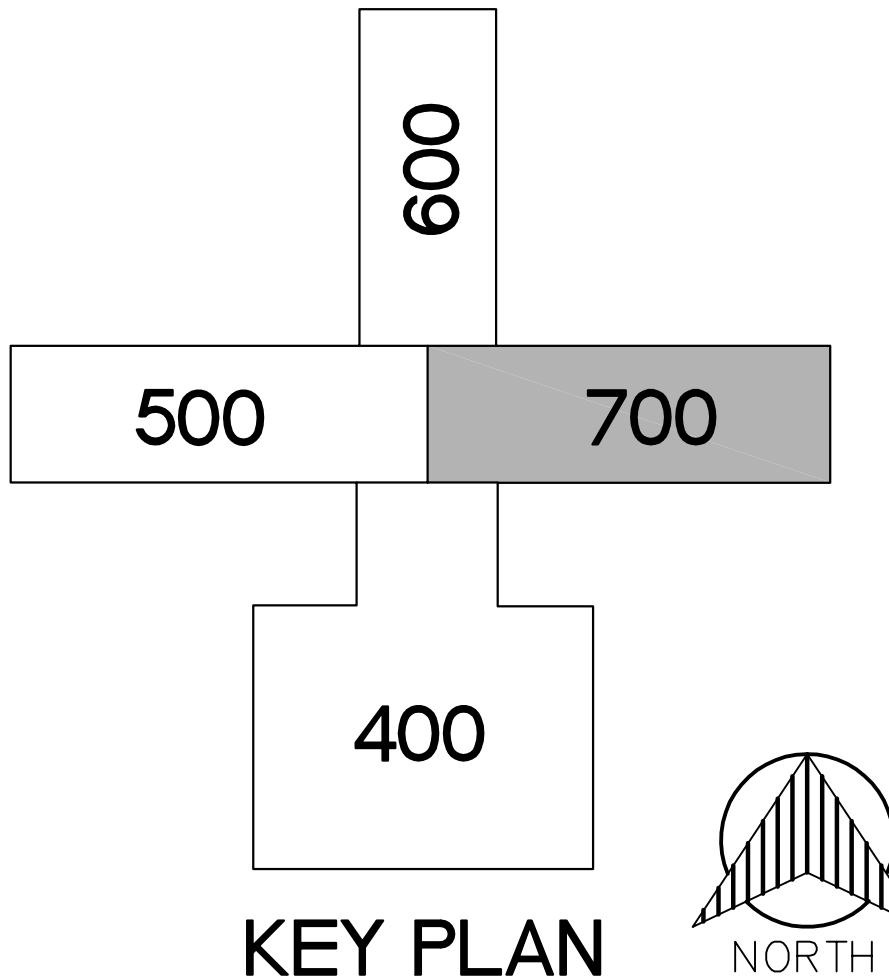
three inches = one foot  
one and one half inches = one foot  
one inch = one foot  
three quarters inch = one foot  
one half inch = one foot  
three eighths inch = one foot  
one quarter inch = one foot  
one eighth inch = one foot



NURSE CALL PLAN  
BLDG 22 - FIRST LEVEL - SECTION 700  
SCALE: 1/8" = 1'-0"

- SYSTEMS NOTES:
- GENERAL NOTES:
1. UNLESS OTHERWISE NOTED, COORDINATE EXACT MOUNTING HEIGHTS OF ALL DEVICES WITH ARCHITECTURAL INTERIOR ELEVATIONS.
- ALL NURSE CALL SYSTEM CONDUITS SHALL BE FACTORY APPLIED COLOR YELLOW AND LABELED ON 5' CENTERS PER WRITTEN SPECIFICATIONS (INCLUDING EXISTING CONDUITS BEING RE-USED).
- KEYED NOTES:
1. ONLY IF MANUFACTURER'S TOILET EMERGENCY STATIONS CANNOT INCLUDE INTEGRAL AUDIO FEATURE, PROVIDE AND INSTALL DUTY STATION ADJACENT TO ALL TOILET EMERGENCY STATIONS TO ALLOW AUDIO COMMUNICATION BETWEEN CARE PROVIDER (TYPICAL ALL TOILET LOCATIONS ON LEVELS 1 & 2 OF BUILDING 22).
2. PROVIDE AND INSTALL CONNECTION TO 4 PROGRAMMING OF MIDDLEWARE FOR AUTOMATIC TRANSMISSION OF ELOPEMENT ALARMS TO CARE PROVIDER MOBILE DEVICES.
3. STAFF STATION ALONG CORRIDOR TO BE LOCATED 66" TO CENTER OF BOX (TYPICAL ALL LOCATIONS IN CORRIDOR ON LEVELS 1 & 2 OF BUILDING 22).


NURSE CALL SYMBOLS		
	DOME LIGHT 2G - 1" C X1	BNL
	SINGLE PATIENT STATION 3G - 44" MH - 1" C	BN1
	DUAL PATIENT STATION 3G - 44" MH - 1" C	BN2
	DUAL PUSH BUTTON/CUSTOM 1G - 44" MH - 3/4" C	BN3
	BATH PULL STATION 1G - 44" - 3/4" C (TOILET) 1G - 68" - 3/4" C (SHOWER)	BN4
	DUTY STATION 3G - 44" MH - 3/4" C	BN6
	STAFF STATION 3G - 66" MH - 3/4" C	BN7
	STAFF ASSIST/CODE BLUE 1G - 44" MH - 3/4" C	BN8
	PUSH FOR HELP 1G - 44" MH - 3/4" C	BN10
	STAFF REGISTRATION 1G - 44" MH - 3/4" C	BN11
	NCA JACK 1G - 44" MH - 3/4" C	BN12
	SPECIALTY PLATE	BN1
	MASTER STATION 1G - 16" MH - 3/4" C	BNLCD
	MASTER STATION 1G - 16" MH - 3/4" C	BNTSM
	CODE BLUE 1G - 44" MH - 3/4" C	BNCB
	CODE PINK/BABY MISSING 1G - 44" MH - 3/4" C	BNCP
	BABY MISSING 1G - 44" MH - 3/4" C	BNBM
	STAFF ASSIST 1G - 44" MH - 3/4" C	BNSA
	UNIVERSAL INTERFACE 3G - ABOVE CEILING - 3/4" C	BNU
	CALL CORD	BNCC
	PILLOW SPEAKER	BNPS
	TV CONTROL 3/4" C PATH FROM BED STATION TO TV	BNTV
	37 PIN BED CONNECTOR 1G - 16" MH - 3/4" C	BN37
	BED LIGHT CONTROL 3/4" C PATH FROM BED STATION TO LIGHT	BNBL
	NURSE CALL CONTROL CABINET SURFACE WALL MOUNT 30" x 30" (1) 20AMP VAC PER CABINET (EMERGENCY) OBTAIN QUANTITY FROM VENDOR	BNUR
	GCM#-JBUS#-ID#	BNGCM



100% BID DOCUMENTS - FOR CONSTRUCTION

35% SCHEMATIC SUBMISSION	03/14/2014
65% DESIGN DEVELOPMENT SUBMISSION	05/23/2014
95% CONSTRUCTION DOCUMENT SUBMISSION	08/08/2014
100% BID DOCUMENT SUBMISSION	05/19/2016
ADDENDUM 02	01/04/2017
Revisions	Date

CONSULTANTS:
--------------

ARCHITECT/ENGINEERS:	
	<p><b>DIEKEMA HAMANN</b> architecture+engineering</p> <p>612 South Park Street Kalamazoo, Michigan 49007</p> <p>15 Ionia Ave SW Grand Rapids, Michigan 49503</p> <p>TL 269.373.1108 FX 269.373.1186</p>

Drawing Title
NURSE CALL PLAN BLDG 22 - FIRST LEVEL - SECTION 700
Approved Project Director

Project Title
NURSE CALL SYSTEM REPLACEMENT BUILDINGS 1 AND 22
Location
ALEDA E. LUTZ VA MEDICAL CENTER
Date
MAY 19, 2016
Checked
PN
Drawn
SH
Project Number
655-13-113
Building Number
22
Drawing Number
22-ES20
Dwg. 22 of 27

Office of Construction and Facilities Management	
	Department of Veterans Affairs