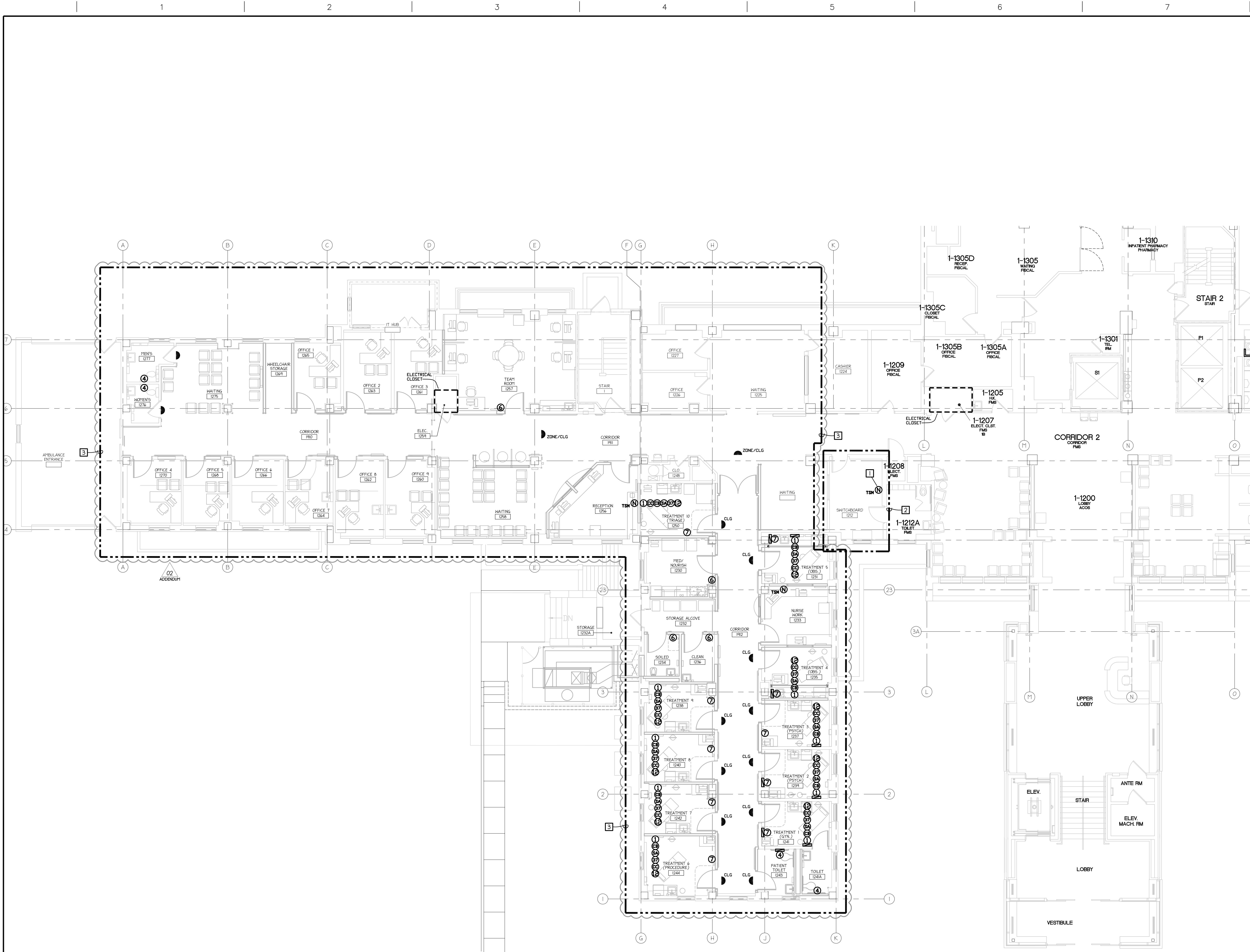


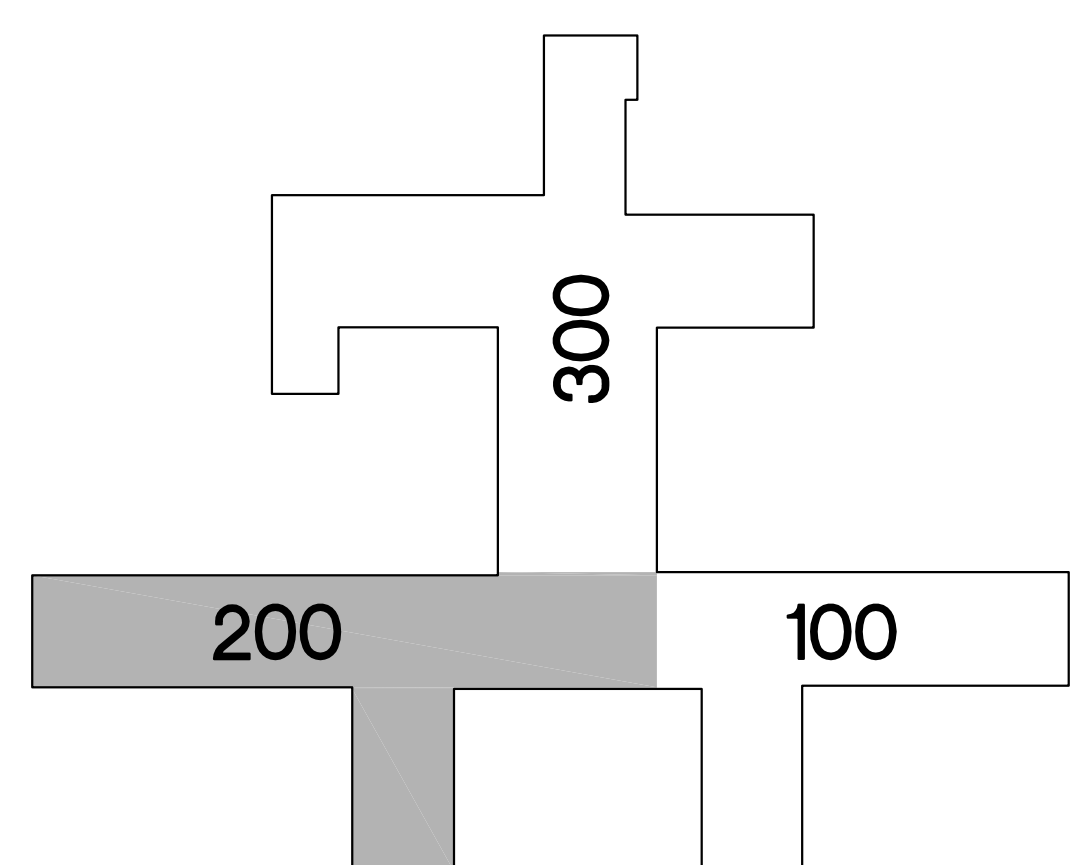
three inches = one foot
one and one half inches = one foot
one inch = one foot
three quarters inch = one foot
one half inch = one foot
three eighths inch = one foot
one quarter inch = one foot
one eighth inch = one foot



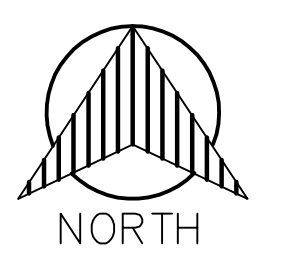
NURSE CALL PLAN
BLDG 01 - FIRST LEVEL - SECTION 200
SCALE: 1/8" = 1'-0"

- SYSTEMS NOTES:**
- GENERAL NOTES:**
- ALL NURSE CALL SYSTEM CONDUITS SHALL BE FACTORY APPLIED COLOR YELLOW AND LABELED ON 5' CENTERS PER WRITTEN SPECIFICATIONS (INCLUDING EXISTING CONDUITS BEING RE-USED).
 - PROVIDE AND INSTALL REMOTE ANNUNCIATION OF ALL BUILDING 1 NURSE CALLS WITHIN THE EXISTING SECURITY SWITCHBOARD ROOM.
 - ROOM IS SUBJECT TO POTENTIAL RENOVATION UNDER SEPARATE PROJECT SCOPE. VERIFY LOCATIONS OF EXISTING DEVICES IN FIELD PRIOR TO REPLACEMENT.
 - THIS AREA IS BEING RENOVATED AS PART OF THE SCOPE OF A SIMULTANEOUS PROJECT. COORDINATE ROUGH-IN SCHEDULE WITH COR. PROVIDE AND INSTALL ALL OTHER NURSE CALL SYSTEM COMPONENTS (INCLUDING BUT NOT LIMITED TO CABLEING, TERMINATIONS, DEVICES, LABELING, & PROGRAMMING).

| NURSE CALL SYMBOLS | | |
|--------------------|--|--------|
| | DOME LIGHT 2G - 1'C X: | BNL |
| | NONE = WALL (1'H = 2" ABOVE DOOR) C = CEILING Z = ZONE | |
| | SINGLE PATIENT STATION 3G - 44" MH - 1'C | BN1 |
| | DUAL PATIENT STATION 3G - 44" MH - 1'C | BN2 |
| | DUAL PUSH BUTTON/CUSTOM 1G - 44" MH - 3/4"C | BN3 |
| | BATH PULL STATION 1G - 44" - 3/4"C (TOILET) 1G - 68" - 3/4"C (SHOWER) | BN4 |
| | DUTY STATION 3G - 44" MH - 3/4"C | BN6 |
| | STAFF STATION 3G - 44" MH - 3/4"C | BN7 |
| | STAFF ASSIST/CODE BLUE 1G - 44" MH - 3/4"C | BN8 |
| | PUSH FOR HELP 1G - 44" MH - 3/4"C | BN10 |
| | STAFF REGISTRATION 1G - 44" MH - 3/4"C | BN11 |
| | NC4 JACK 1G - 44" MH - 3/4"C | BN12 |
| | SPECIALTY PLATE | BNM1 |
| | MASTER STATION 1G - 16" MH - 3/4"C | BNLCD |
| | MASTER STATION 1G - 16" MH - 3/4"C | BNTSM1 |
| | CODE BLUE 1G - 44" MH - 3/4"C | BNCB |
| | CODE PINK/BABY MISSING 1G - 44" MH - 3/4"C | BNCP |
| | BABY MISSING 1G - 44" MH - 3/4"C | BNBM1 |
| | STAFF ASSIST 1G - 44" MH - 3/4"C | BNSA |
| | UNIVERSAL INTERFACE 3G - ABOVE CEILING - 3/4"C | BNUI |
| | CALL CORD | BNCC |
| | PILLOW SPEAKER | BNPS |
| | TV CONTROL 3/4"C PATH FROM BED STATION TO TV | BNTV |
| | 37 PIN BED CONNECTOR 1G - 16" MH - 3/4"C | BN37 |
| | BED LIGHT CONTROL 3/4"C PATH FROM BED STATION TO LIGHT | BNBL |
| | NURSE CALL TERMINAL CABINET SURFACE WALL MOUNT 30" x 30" (2) 2"C (1) 20AMP VAC PER CABINET (EMERGENCY) OBTAIN QUANTITY FROM VENDOR | BNUR |
| | GCM#-JEUS#-ID# | BNGCM1 |



KEY PLAN



| | | | | | | |
|---|---------------------|--|---|---|--|---|
| 35% SCHEMATIC SUBMISSION 03/14/2014 65% DESIGN DEVELOPMENT SUBMISSION 05/23/2014 95% CONSTRUCTION DOCUMENT SUBMISSION 08/08/2014 100% BID DOCUMENT SUBMISSION 05/19/2016 ADDENDUM 02 01/04/2017 | CONSULTANTS: | ARCHITECT/ENGINEERS: DIEKEMA HAMANN architecture+engineering 612 South Park Street Kalamazoo, Michigan 49007 15 Ionia Ave SW Grand Rapids, Michigan 49503 TL 269.373.1108 FX 269.373.1186 | Drawing Title NURSE CALL PLAN BLDG 01 - FIRST LEVEL - SECTION 200 Approved Project Director | Project Title NURSE CALL SYSTEM REPLACEMENT BUILDINGS 1 AND 22 Location ALEDA E. LUTZ VA MEDICAL CENTER Date MAY 19, 2016 Checked PN Drawn SH | Project Number 655-13-113 Building Number 01 Drawing Number 01-ES26 Dwg. 28 of 45 | Office of Construction and Facilities Management Department of Veterans Affairs |
|---|---------------------|--|---|---|--|---|