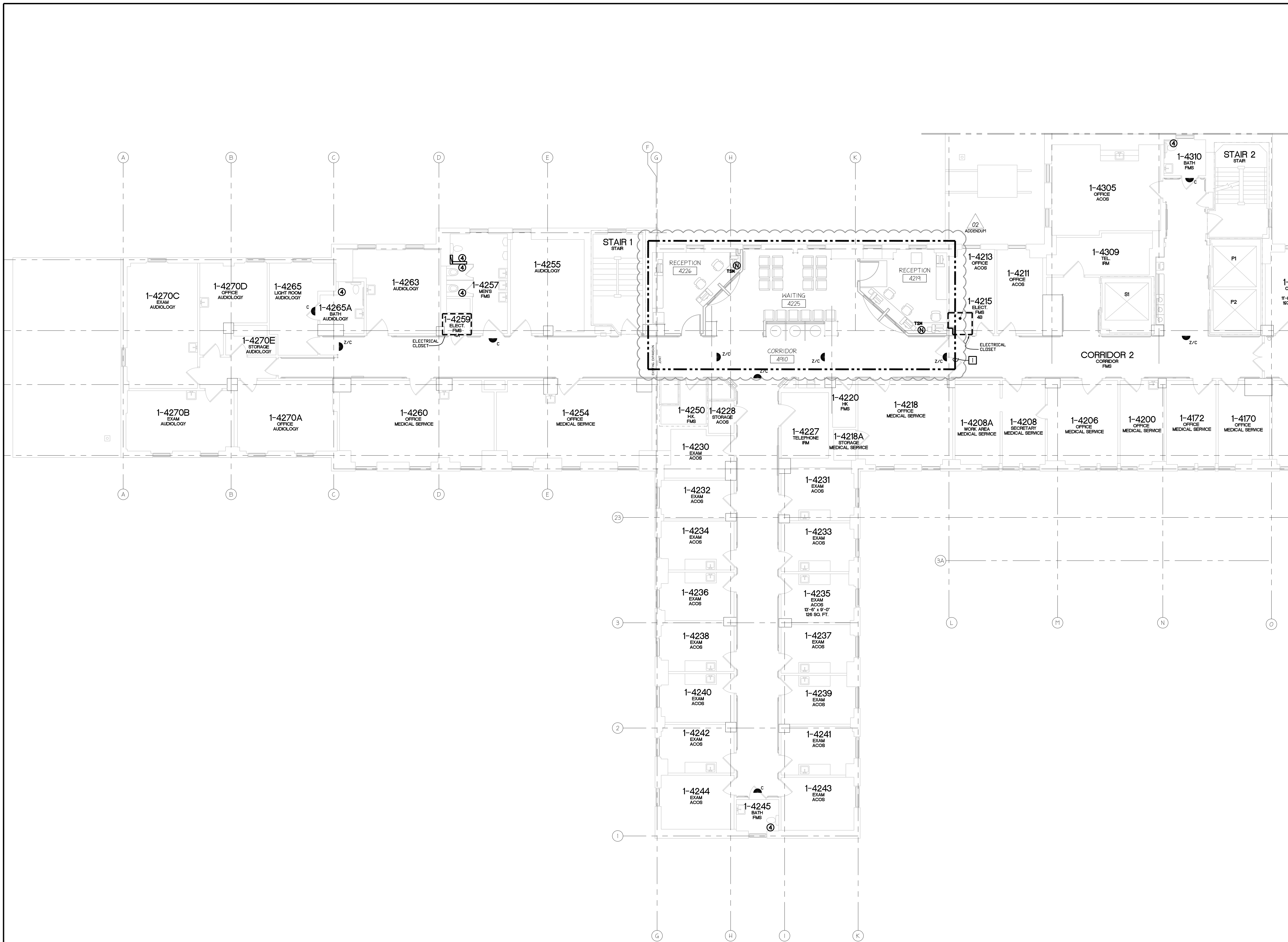


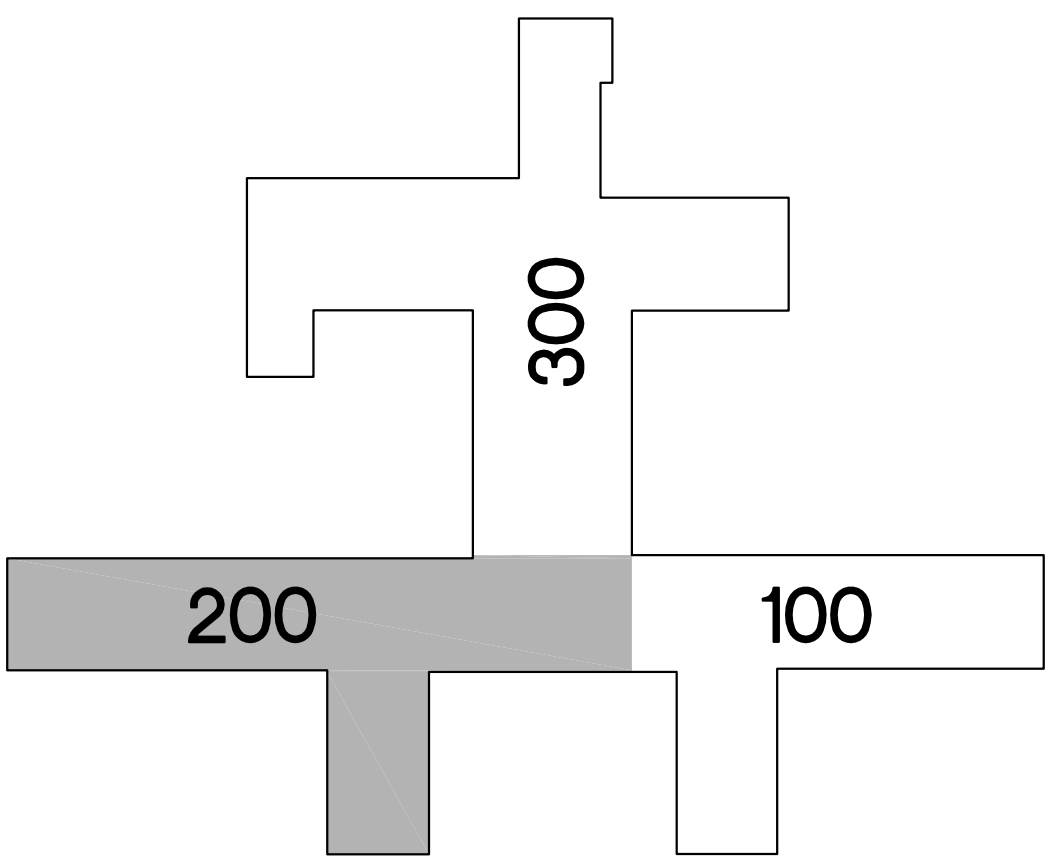
three eighths inch = one foot
one eighth inch = one foot
one quarter inch = one foot
one half inch = one foot
three quarters inch = one foot
one inch = one foot
one and one half inches = one foot
two inches = one foot
three inches = one foot
four inches = one foot
five inches = one foot
six inches = one foot
seven inches = one foot
eight inches = one foot
nine inches = one foot
ten inches = one foot
eleven inches = one foot
twelve inches = one foot
thirteen inches = one foot
fourteen inches = one foot
fifteen inches = one foot
sixteen inches = one foot
seventeen inches = one foot
eighteen inches = one foot
nineteen inches = one foot
twenty inches = one foot
twenty one inches = one foot
twenty two inches = one foot
twenty three inches = one foot
twenty four inches = one foot
twenty five inches = one foot
twenty six inches = one foot
twenty seven inches = one foot
twenty eight inches = one foot
twenty nine inches = one foot
thirty inches = one foot
thirty one inches = one foot
thirty two inches = one foot
thirty three inches = one foot
thirty four inches = one foot
thirty five inches = one foot
thirty six inches = one foot
thirty seven inches = one foot
thirty eight inches = one foot
thirty nine inches = one foot
forty inches = one foot
forty one inches = one foot
forty two inches = one foot
forty three inches = one foot
forty four inches = one foot
forty five inches = one foot
forty six inches = one foot
forty seven inches = one foot
forty eight inches = one foot
forty nine inches = one foot
fifty inches = one foot
fifty one inches = one foot
fifty two inches = one foot
fifty three inches = one foot
fifty four inches = one foot
fifty five inches = one foot
fifty six inches = one foot
fifty seven inches = one foot
fifty eight inches = one foot
fifty nine inches = one foot
sixty inches = one foot
sixty one inches = one foot
sixty two inches = one foot
sixty three inches = one foot
sixty four inches = one foot
sixty five inches = one foot
sixty six inches = one foot
sixty seven inches = one foot
sixty eight inches = one foot
sixty nine inches = one foot
seventy inches = one foot
seventy one inches = one foot
seventy two inches = one foot
seventy three inches = one foot
seventy four inches = one foot
seventy five inches = one foot
seventy six inches = one foot
seventy seven inches = one foot
seventy eight inches = one foot
seventy nine inches = one foot
eighty inches = one foot
eighty one inches = one foot
eighty two inches = one foot
eighty three inches = one foot
eighty four inches = one foot
eighty five inches = one foot
eighty six inches = one foot
eighty seven inches = one foot
eighty eight inches = one foot
eighty nine inches = one foot
ninety inches = one foot
ninety one inches = one foot
ninety two inches = one foot
ninety three inches = one foot
ninety four inches = one foot
ninety five inches = one foot
ninety six inches = one foot
ninety seven inches = one foot
ninety eight inches = one foot
ninety nine inches = one foot
one hundred inches = one foot



NURSE CALL PLAN
BLDG 01 - FOURTH LEVEL - SECTION 200
SCALE: 1/8" = 1'-0"

- SYSTEMS NOTES:**
- GENERAL NOTES:**
1. ALL NURSE CALL SYSTEM CONDUITS SHALL BE FACTORY APPLIED COLOR YELLOW AND LABELED ON 5' CENTERS PER WRITTEN SPECIFICATIONS (INCLUDING EXISTING CONDUITS BEING RE-USED).
- KEYED NOTES:**
1. THIS AREA IS BEING RENOVATED AS PART OF THE SCOPE OF A SIMULTANEOUS PROJECT. COORDINATE ROUGH-IN SCHEDULE WITH COR. PROVIDE AND INSTALL ALL OTHER NURSE CALL SYSTEM COMPONENTS (INCLUDING BUT NOT LIMITED TO CABLING, TERMINATIONS, DEVICES, LABELING, & PROGRAMMING).

NURSE CALL SYMBOLS		
	DOME LIGHT 2G - 1'C X: NONE = WALL (1'H = 2" ABOVE DOOR) C = CEILING Z = ZONE	BNL
	SINGLE PATIENT STATION 3G - 44" MH - 1'C	BN1
	DUAL PATIENT STATION 3G - 44" MH - 1'C	BN2
	DUAL PATIENT STATION/CUSTOM IG - 44" MH - 3/4"C	BN3
	BATH PULL STATION IG - 44" - 3/4"C (TOILET) IG - 68" - 3/4"C (SHOWER)	BN4
	DUTY STATION 3G - 44" MH - 3/4"C	BN6
	STAFF STATION 3G - 44" MH - 3/4"C	BN7
	STAFF ASSIST/CODE BLUE IG - 44" MH - 3/4"C	BN8
	PUSH FOR HELP IG - 44" MH - 3/4"C	BN10
	STAFF REGISTRATION IG - 44" MH - 3/4"C	BN11
	NC4 JACK IG - 44" MH - 3/4"C	BN12
	SPECIALTY PLATE	BNM
	MASTER STATION IG - 16" MH - 3/4"C	BNLCD
	MASTER STATION IG - 16" MH - 3/4"C	BN15M
	CODE BLUE IG - 44" MH - 3/4"C	BNCB
	CODE PINK/BABY MISSING IG - 44" MH - 3/4"C	BNCP
	BABY MISSING IG - 44" MH - 3/4"C	BNBM
	STAFF ASSIST IG - 44" MH - 3/4"C	BNSA
	UNIVERSAL INTERFACE 3G - ABOVE CEILING - 3/4"C	BNU
	CALL CORD	BNCC
	PILLOW SPEAKER	BNPS
	TV CONTROL 3/4"C PATH FROM BED STATION TO TV	BNTV
	37 PIN BED CONNECTOR IG - 16" MH - 3/4"C	BN37
	BED LIGHT CONTROL 3/4"C PATH FROM BED STATION TO LIGHT	BNBL
	NURSE CALL TERMINAL CABINET SURFACE WALL MOUNT 30" x 30" (2) 2"C (1) 20AMP VAC PER CABINET (EMERGENCY) OBTAIN QUANTITY FROM VENDOR	BNUR
	GCM#-JEUS#-ID#	BN10M



KEY PLAN

35% SCHEMATIC SUBMISSION	03/14/2014
65% DESIGN DEVELOPMENT SUBMISSION	05/23/2014
95% CONSTRUCTION DOCUMENT SUBMISSION	08/08/2014
100% BID DOCUMENT SUBMISSION	05/19/2016
ADDENDUM 02	01/04/2017
Revisions	Date

CONSULTANTS:

ARCHITECT/ENGINEERS:



DIEKEMA HAMANN
architecture+engineering
612 South Park Street
Kalamazoo, Michigan 49007
15 Ionia Ave SW
Grand Rapids, Michigan 49503
TL 269.373.1108
FX 269.373.1186

Drawing Title
NURSE CALL PLAN
BLDG 01 - FOURTH LEVEL -
SECTION 200

Approved Project Director

Project Title
NURSE CALL SYSTEM
REPLACEMENT
BUILDINGS 1 AND 22

Location
ALEDA E. LUTZ VA MEDICAL CENTER

Date
MAY 19, 2016

Checked
PN

Drawn
SH

Project Number
655-13-113

Building Number
01

Drawing Number
01-ES35
Dwg. 37 of 45

Office of
Construction
and Facilities
Management

