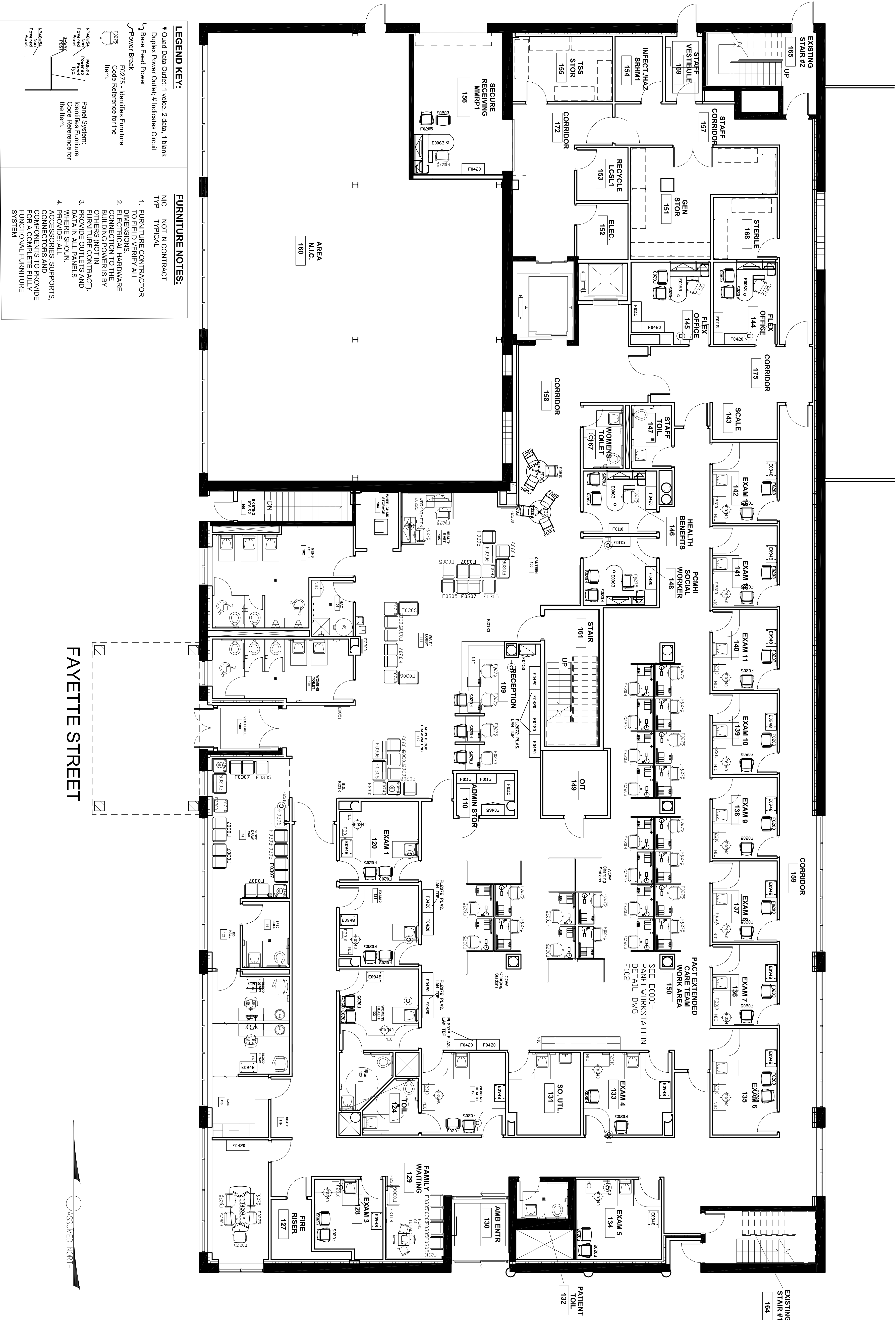


ATTACHMENT A
FURNITURE PLANS AND DETAILS

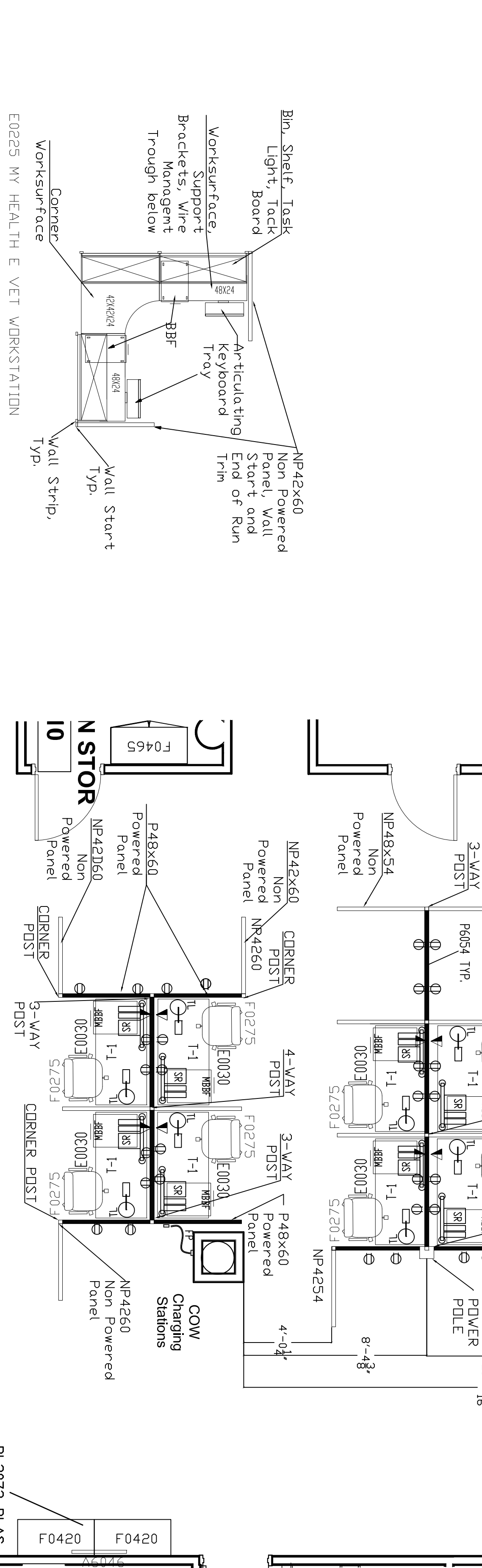
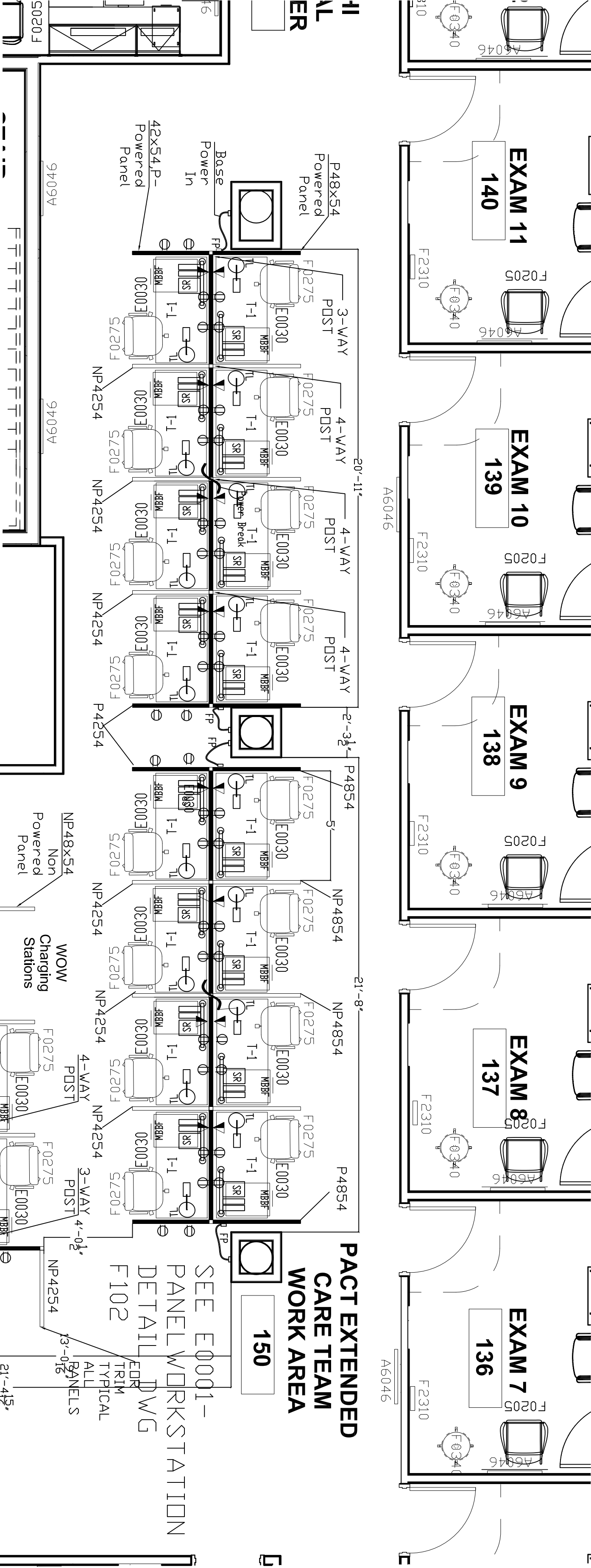


Section	Legend Code	Item Description
		Guest Side Chair, 4 Leg, Big, Upholstered seat and back, polyurethane / PVC free upholstery, ballistic nylon back, CAL TB133
1	F0203	Guest Side Chair, 4 Leg Upholstered, weight limit of 325 lbs. CAL 133
	F0210	Chair, Side, Armless, Sq. back, black non marring glides, ballistic back, polyurethane / pvc free upholstery, CAL TB 133.
1	F0275	Task Chair w/seat Height Adj., Detachable 5-Bar, adj. width 4D arms, CAL TB133, seat slider, polyurethane seat upholstery, hard floor casters
1	F0280	Chair, Swivel, High Back, Wide , Police
2	F0305	Chair, Wide, Warranted for users up to 500 lbs, Open Arm, Upholstered Seat & Back CAL133
2	F0306	Chair, Bariatric Warranted for users up to 750 lbs, Open Arm, Upholstered Seat & Back, CAL 133
2	F0307	Chair, Waiting, Two Seater, Open Arm, Upholstered Seat & Back, 500 lb/seat CAL 133
2	F0740	Table, Side
3	CL	Clocks
3	E0851	Display, Tack board & Marker board, Wall Mtd
3	F2100	Lectern, Mobile, With Reading Light
	F2300	Wall Literature Rack - 3-Tiered Clear Acrylic with Adjustable Pockets -9 Magazine or 18 Pamphlet
3		Wall Mounted Magazine Racks 2-Tiered Clear Acrylic with 4 - 8 Pockets (Clear Back)
3	F2310	Lamp, Table With Shade. Height: 31"
3	F2420	White Board, Whiteboard, With Sliding Panels, Magnetic with rail, Size 48" w 10" to 12" L
3	F3055	Tackboard and Whiteboard Combination 48" w x 36" h, Fabric Tackable and Writing Surface
3	F6048	Display, Tack board/ White Board 60x48, Wall Mtd
3	FCH1	Children's play chairs, thermoplastic bola, fixed back, 4-leg, wall saver, CAL133
3	FSTOR	Children's Book Truck, Manufacturer: Jonti-Cre
3	FT1	Children Activity Table, D 30" L 30" HT 21"

FURNITURE LEGEND

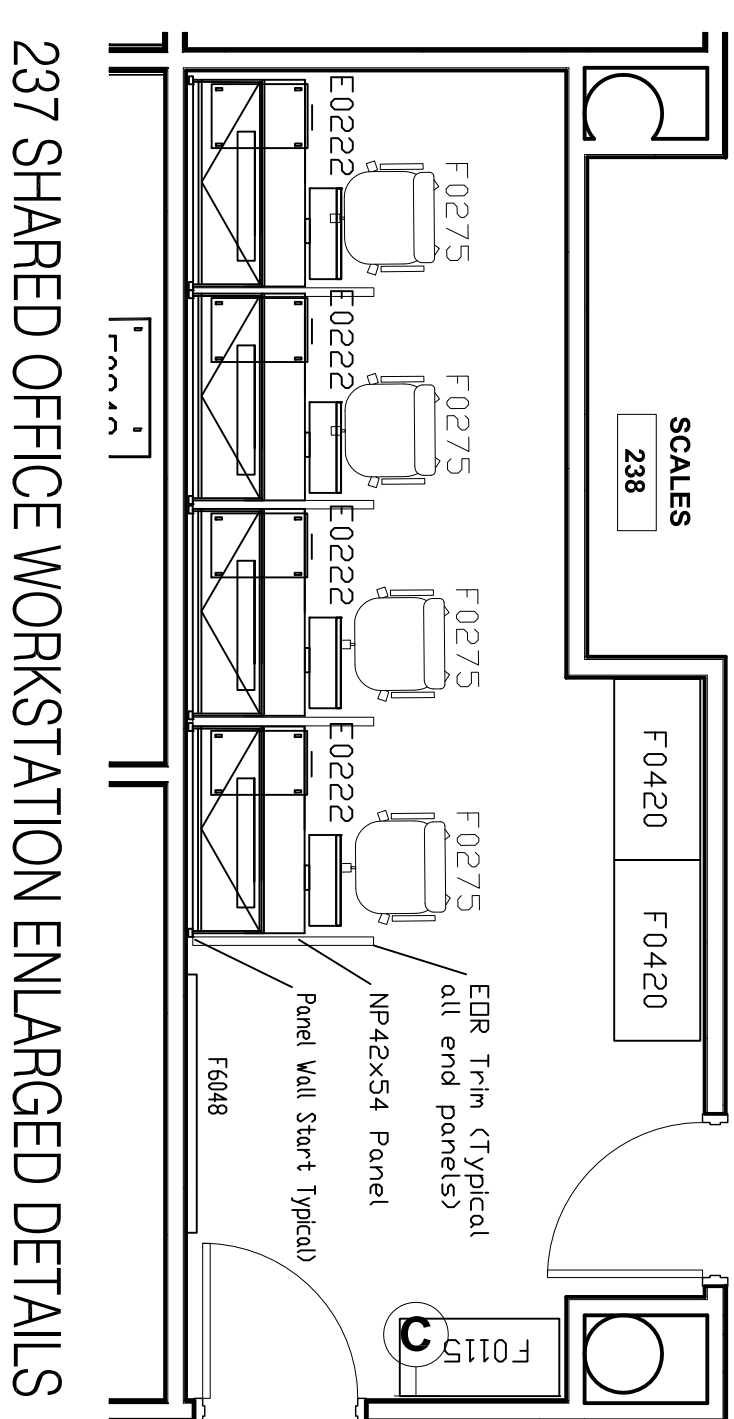
LEGEND KEY:		FURNITURE NOTES:
<ul style="list-style-type: none"> Quoted Data Outlet: 1 voice, 2 data, 1 blank Duplex Power Outlet: # indicates circuit Base Feed Power Power Break F0275 - Identifies Furniture Code Reference for the Item. Panel System: Identifies Furniture Code Reference for the Item. 	<ul style="list-style-type: none"> NOT IN CONTRACT TYP FURNITURE CONTRACTOR PROVIDED VENDOR ALL INFORMATION BY OTHERS (NOT IN CONTRACT), BUILDING POWER IS BY ELECTRICAL HARDWARE CONNECTED TO THE BUILDING POWER AND PROVIDED BY THE ELECTRICAL HARDWARE WHERE SHOWN. PROVIDE: ALL ACCESSORIES, SUPPORTS, COMPONENTS TO PROVIDE FOR A COMPLETE FULLY FUNCTIONAL FURNITURE SYSTEM. 	

Section	Legend Code	Item Description
4	BBF	Stationary Pedestal File, Box, Box, File, Lock
4	FF	Stationary Pedestal File, File, File, Lock
4	MBBF	Pedestal, Mobile, (2) 6" Box drawers, (1) 12" file drawer, texture paint finish, chrome pulls and lock, 22"D, 4 Casters.
4	T3060	Table, Conference, Flip Top, Nesting , ganging connectors, casters
4	T4284	Meeting Table, TeleHealth Oval – 42x84
4	EVID	Table Top Pop-Up Electrical Voice/ Data Distributor Mount
4	T4860	Table, Conference, Flip Top, Nesting , 48x60 ganging connectors, casters
4	T36	Table, 36 Round laminate top with thermoplast
4	T42	Table, 42" Conference
4	T60	Table, Conference, Round 60"
4	E0001	Panel Workstations - PACT EXTENDED CARE TEAM WORK AREA ROOM 150 – see attached drawing F102
4		Workstation, Freestanding 30x60 Sit Stand, Desktop Task Light, Wire management trough, elec and data to table, CPU Holder, Storage Rail of 29" wide, Tool Rail, 2 ea. Paper Tray, and 1 ea. Diagonal Tray
4	E0030	Computer Workcenter, freestanding 48"
4	E0042	Workstation, L-Shaped w/Peninsula, Wall Mtd, 72x72
4	E0063	Workstation, L-Shaped w/Peninsula, Wall Mtd, 72x72
4	E0065	Workstation, L-Shaped w/Peninsula, Wall Mtd, 72x72
4	E0071	Desk- L-Shaped w/return, Overhead Storage 72x72
4	E0073	Workstation, L-Shaped w storage, 72x72
4		Worksurface, Computer, O/H Cab, Wall Mounted, 48", with Acoustical Panels and Mobile Pedestal File. Key alike mobile pod and overhead bin.
4	E0222	Worksurface, Computer, O/H Cab, Wall Mtd, 48" W
4	E0224	Workstation, Work Surface, Wall Mtd, 96x96
4	E0225	Worksurface, Computer, O/H Cab, Wall Mounted, 48", with Acoustical Panels and Mobile Pedestal File. Key alike mobile pod and overhead bin.
4	E0226	Workstation, Work Surface, Wall Mtd, 96x96
4	F0110	Bookcase, Open, 3 Shelf
4	F0115	Bookcase, Open, 5 Shelf
4	F0420	Cabinet, Filing, Lateral, Half Height
4	PL2072	Plastic Laminate Top - File Cab't 20x72
4	F0430	Cabinet, Combination Storage
4	F0435	Cabinet, Combination Storage- no doors
4	F0450	Cabinet, Combination Storage, 30" w, 20"d
4	F0465	Cabinet, Storage, 2 Door, 5 Shelf
4	master key	Master Key
4		Adjustable Wire Shelving Mobile Cart with Polyurethane casters, 5 Shelf with Plexi liner, 900 lbs.
5	24x48 Cart	Cart, General Storage, Mobile, 42"H x 32"W x 900 lbs.
5	E0948	Cart, General Storage, Mobile, 42"H x 32"W x 900 lbs.
5	F0235	Lab Stool, Swivel with Back and Footrest, Gas Cylinder, 5 caster, Vinyl Upholstery: Graphite Color
5	F0235	Stool, Swivel with Back and Footrest.
5	F0340	Stool, Physician Swivel Air Lift - Workbench Electronic Technician
5	SRCS1	Workbench, Load Capacity 2000 Lb.,



E0225 - MY HEALTH E VET WORKSTATION ENLARGED DETAIL

E0001 - PACT EXTENDED CARE TEAM WORKSTATIONS ENLARGED DETAIL



237 SHARED OFFICE WORKSTATION ENLARGED DETAILS

BINGHAMTON COMMUNITY BASED OUTPATIENT CLINIC FIRST FLOOR and SECOND FLOOR WORKSTATION DETAILS

Drawing F102



FAVETTE STREET

BINGHAMTON COMMUNITY BASED OUTPATIENT CLINIC
SECOND FLOOR
FURNITURE LAYOUT

