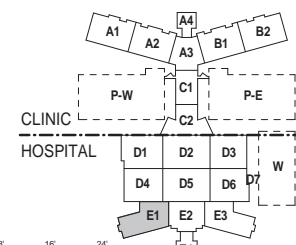








- NOTES:**  
**SHEET NOTES:**
- SEE SHEET G-011 FOR GENERAL ABBREVIATIONS AND ARCHITECTURAL SYMBOLS.
  - REFER TO SHEETS H-S SERIES FOR LIFE SAFETY PLANS.
  - ALL INTERIOR PARTITIONS ARE TYPE 27 U.O.N. SEE SHEET H-AE5.600 SERIES FOR PARTITION TYPES.
  - REFER TO EQUIPMENT PLAN SHEETS H-QH4.000 SERIES FOR ADDITIONAL DIMENSIONS AND INFORMATION.
  - REFER TO SHEET H-GH4.101 FOR NON-MEDICAL EQUIPMENT LIST. REFER TO H-GH4.102 FOR TYPICAL MOUNTING HEIGHTS AND TOILET INFORMATION.
  - REFER TO SHEET H-AE5.000 SERIES FOR DOOR, FRAME AND BORROWED LITE SCHEDULES AND DETAILS.
  - DIMENSIONS ARE TO COLUMN GRID. FACE OF MASONRY OR CONCRETE OR FACE OF METAL STUD U.O.N. DIMENSIONS NOTED AS "CLEAR" ARE FINISH FACE TO FINISH FACE INCLUDING ALL FINISHES SUCH AS TILE, WALL PANELS, ETC.
  - SEE H-AE5.4 SERIES FOR WINDOW AND LOUVER TYPES.
  - REFER TO PLUMBING PANS, H-MP1 SERIES, FOR FLOOR DRAIN LOCATIONS.
  - REFER TO SHEET H-AE5.210 FOR TYPICAL EXPANSION JOINT DETAILS.
  - REFER TO SHEET H-AE5.201 THRU H-AE5.302 FOR TYPICAL PLAN DETAILS.
  - SEE SHEETS H-AE4.301 FOR ENLARGED PLANS - TYPICAL ROOMS.
  - REFER TO SHEET H-AE1.2F4 FOR ROOF NOTES. [R-2]

- KEYNOTE LEGEND**
- INTERIOR FLOOR DRAIN, TYPICAL. SEE PLUMBING DRAWINGS.
  - ROOFTOP GOOSENECK VENT/EXHAUST WITH BIRD SCREEN. SEE MECHANICAL DRAWINGS.
  - ACCESS PANEL 2 HOUR RATED 30" X 30".

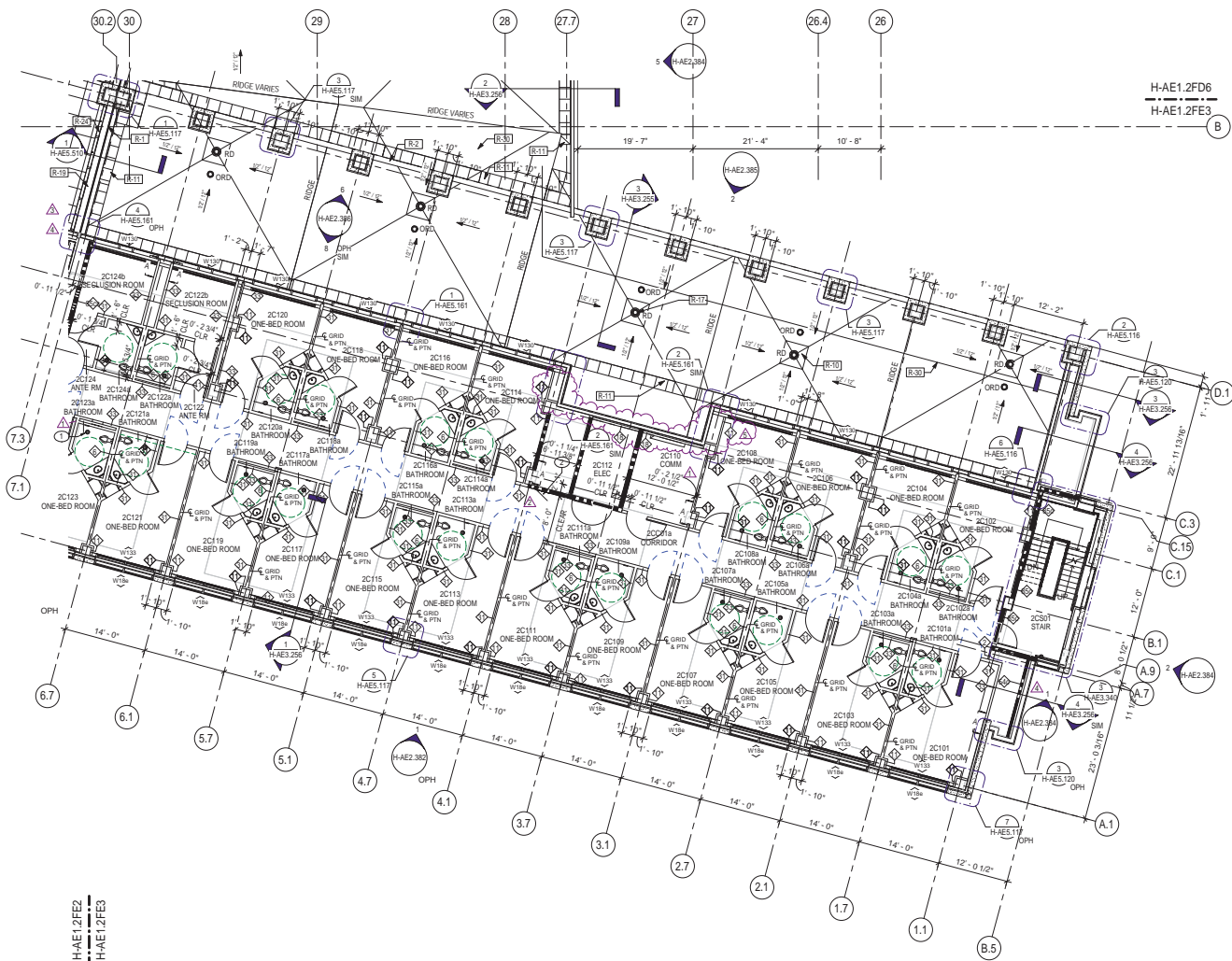


**KEY PLAN**  
 AREA E, ZONE 1

**BUILDING IS FULLY SPRINKLERED**

<table><tr><th>No.</th><th>Description</th><th>Date</th></tr><tr><td>1</td><td>CPR 068</td><td>07/08/2011</td></tr><tr><td>2</td><td>CPR 139</td><td>09/08/2011</td></tr><tr><td>3</td><td>CPR 151</td><td>09/23/2011</td></tr><tr><td>4</td><td>CPR 258</td><td>03/08/2012</td></tr><tr><td>5</td><td>CPR 293</td><td>06/08/2012</td></tr><tr><td>6</td><td>CPR 337</td><td>09/20/2012</td></tr><tr><td> </td><td> </td><td> </td></tr><tr><td> </td><td> </td><td> </td></tr><tr><td> </td><td> </td><td> </td></tr></table>			No.	Description	Date	1	CPR 068	07/08/2011	2	CPR 139	09/08/2011	3	CPR 151	09/23/2011	4	CPR 258	03/08/2012	5	CPR 293	06/08/2012	6	CPR 337	09/20/2012										CONSULTANTS:	Professional Seals:	ARCHITECT/ENGINEERS:	<table><tr><td colspan="2">Drawing Title HOSPITAL / CLINIC LEVEL 2, AREA E, ZONE 1 CONSTRUCTION PLAN</td><td>Drawing Title A NEW HOSPITAL FOR VAMC ORLANDO, FLORIDA</td></tr><tr><td colspan="2">Approved Project Director </td><td>Location Orlando, Florida</td></tr><tr><td colspan="2"> </td><td>Date 04 JUNE, 2010</td></tr><tr><td colspan="2"> </td><td>Checked  </td></tr><tr><td colspan="2"> </td><td>Drawn EB / RLF</td></tr></table>	Drawing Title HOSPITAL / CLINIC LEVEL 2, AREA E, ZONE 1 CONSTRUCTION PLAN		Drawing Title A NEW HOSPITAL FOR VAMC ORLANDO, FLORIDA	Approved Project Director 		Location Orlando, Florida			Date 04 JUNE, 2010			Checked 			Drawn EB / RLF	<table><tr><td>Project Number 675-950</td><td rowspan="2">OFFICE OF FACILITIES MANAGEMENT</td></tr><tr><td>Building Number 01 AND 02</td></tr><tr><td>Drawing Number H-AE1.2FE1</td><td rowspan="2"> Department of Veterans Affairs</td></tr><tr><td>Dwg. 0804 of 4322</td></tr></table>	Project Number 675-950	OFFICE OF FACILITIES MANAGEMENT	Building Number 01 AND 02	Drawing Number H-AE1.2FE1	 Department of Veterans Affairs	Dwg. 0804 of 4322
No.	Description	Date																																																								
1	CPR 068	07/08/2011																																																								
2	CPR 139	09/08/2011																																																								
3	CPR 151	09/23/2011																																																								
4	CPR 258	03/08/2012																																																								
5	CPR 293	06/08/2012																																																								
6	CPR 337	09/20/2012																																																								
Drawing Title HOSPITAL / CLINIC LEVEL 2, AREA E, ZONE 1 CONSTRUCTION PLAN		Drawing Title A NEW HOSPITAL FOR VAMC ORLANDO, FLORIDA																																																								
Approved Project Director 		Location Orlando, Florida																																																								
		Date 04 JUNE, 2010																																																								
		Checked 																																																								
		Drawn EB / RLF																																																								
Project Number 675-950	OFFICE OF FACILITIES MANAGEMENT																																																									
Building Number 01 AND 02																																																										
Drawing Number H-AE1.2FE1	 Department of Veterans Affairs																																																									
Dwg. 0804 of 4322																																																										





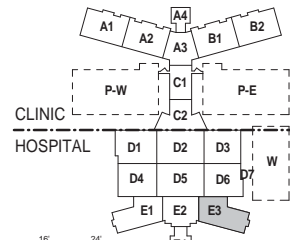
NOTES:

SHEET NOTES:

- A. SEE SHEET G-011 FOR GENERAL ABBREVIATIONS AND ARCHITECTURAL SYMBOLS.
- B. REFER TO SHEETS H-LS SERIES FOR LIFE SAFETY PLANS.
- C. ALL INTERIOR PARTITIONS ARE TYPE 27 U.O.N. SEE SHEET H-AES.600 SERIES FOR PARTITION TYPES.
- D. REFER TO EQUIPMENT PLAN SHEETS H-QM.000 SERIES FOR ADDITIONAL DIMENSIONS AND INFORMATION.
- E. REFER TO SHEET H-QM.101 FOR NON-MEDICAL EQUIPMENT LIST. REFER TO H-QM.102 FOR TYPICAL MOUNTING HEIGHTS AND TOILET INFORMATION.
- F. REFER TO SHEET H-AES.000 SERIES FOR DOOR, FRAME AND BORROWED LITE SCHEDULES AND DETAILS.
- G. DIMENSIONS ARE TO COLUMN GRID, FACE OF MASONRY OR CONCRETE OR FACE OF METAL STUD U.O.N. DIMENSIONS NOTED AS "CLEAR" ARE FINISH FACE TO FINISH FACE INCLUDING ALL FINISHES SUCH AS TILE, WALL PANELS, ETC.
- H. SEE H-AES.4 SERIES FOR WINDOW AND LOUVER TYPES.
- I. REFER TO PLUMBING PANS, H-M1 SERIES, FOR FLOOR DRAIN LOCATIONS.
- J. REFER TO SHEET H-AES.210 FOR TYPICAL EXPANSION JOINT DETAILS.
- K. REFER TO SHEET H-AES.201 THRU H-AES.302 FOR TYPICAL PLAN DETAILS.
- L. SEE SHEETS H-AE.4.301 FOR ENLARGED PLANS - TYPICAL ROOMS.
- M. REFER TO SHEET H-AE.1.2FA4 FOR ROOF NOTES. [R-3]

KEY NOTE LEGEND

- 1 INTERIOR FLOOR DRAIN, TYPICAL. SEE PLUMBING DRAWINGS.
- 2 ACCESS PANEL 2 HOUR RATED 30" X 30"



KEY PLAN  
AREA E, ZONE 3

BUILDING IS FULLY SPRINKLERED

No.	Description	Date	CONSULTANTS:	Professional Seals:	ARCHITECT/ENGINEERS:	Drawing Title	Project Title	Project Number	Office of Facilities Management
1	CPR 139	09/08/2011				HOSPITAL / CLINIC	A NEW HOSPITAL FOR	675-950	
2	CPR 151	09/23/2011				LEVEL 2, AREA E, ZONE 3	VAMC ORLANDO, FLORIDA	Bidding Number	01 AND 02
3	CPR 258	03/08/2012				BID ALTERNATE NO. 7		Drawing Number	
4	CPR 293	06/08/2012						H-AE1.2FE3-A	
5	CPR 337	09/20/2012						Dwg. 0806 of 4322	