

NOTE: COVER SHALL STATE "COMMUNICATIONS" FOR COMMUNICATIONS MANHOLES AND "ELECTRIC" FOR ELECTRICAL POWER MANHOLES, CAST INTO COVER.

TECHNICON
ENGINEERS/ARCHITECTS
MACON & ATLANTA

Date
January 27 2012

Project No. _____

DRAWING NO.

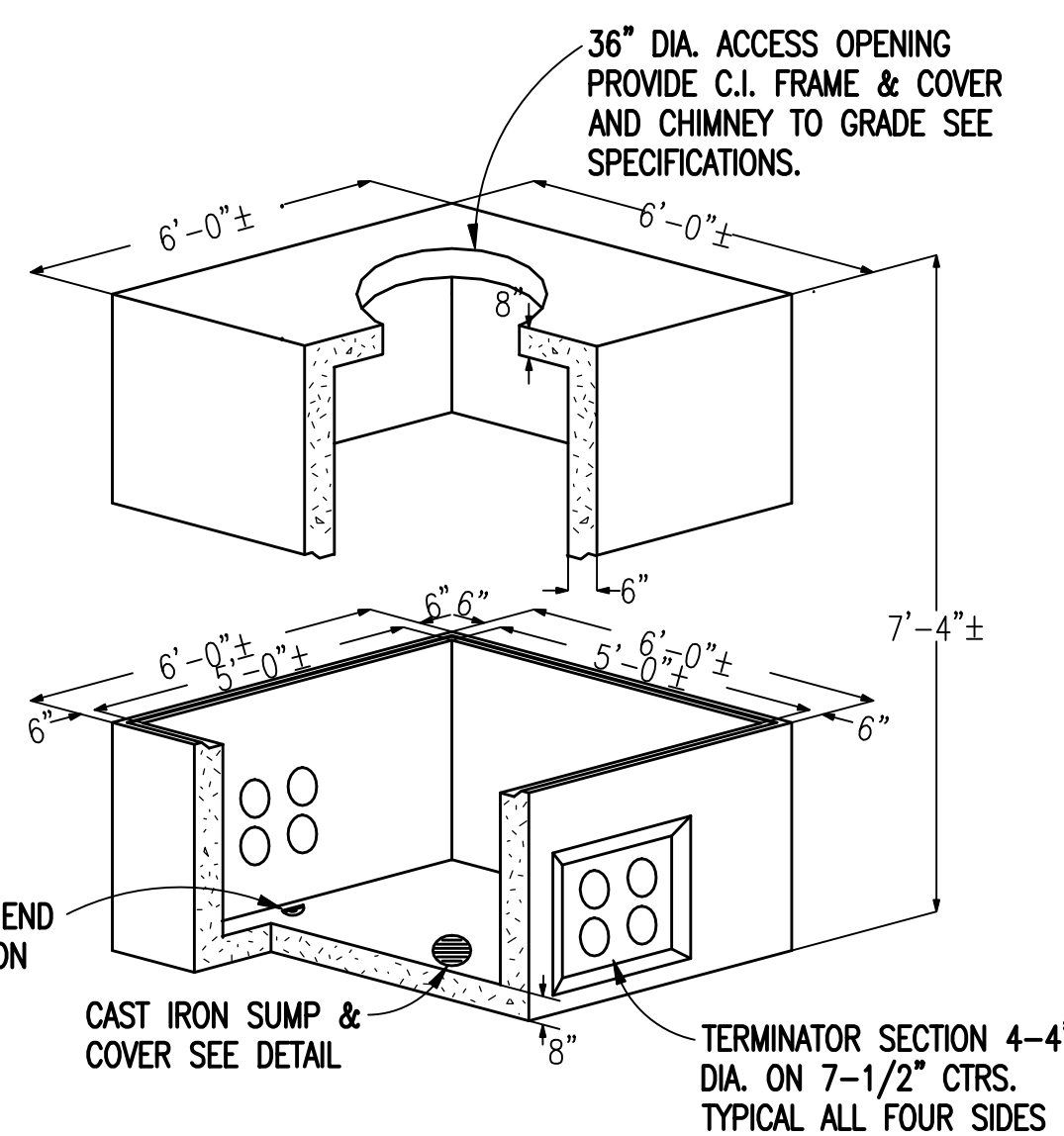
Dwg. 2 Of 4

Veterans Administration

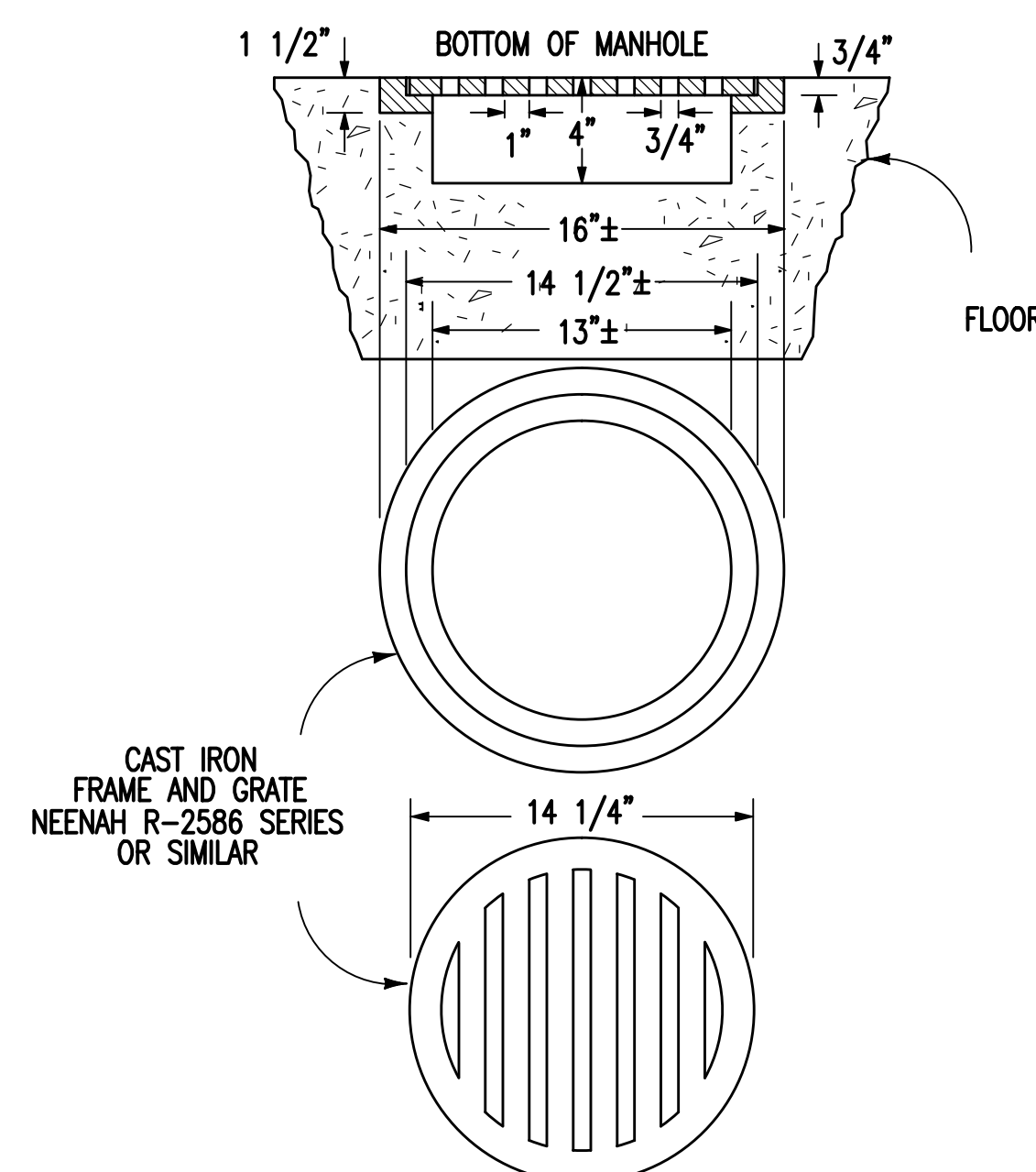
GENERAL NOTES:

(THIS DETAIL ONLY)

- A. 4500 PSI @ 28 DAYS MIN. COMP. STRENGTH NORMAL WEIGHT CONCRETE.
- B. REINFORCING STEEL SHALL BE ASTM-A-615 GRADE 60.
- C. DESIGN SHALL BE FOR H-20 WHEEL LOADING.
- D. ASSUME WATER TABLE AT GRADE FOR ANTI-FLOATATION DESIGN.



5'W x 5'L x 6'H INTERIOR (APPROX.)
CAST IN PLACE VAULT W/ROUND ACCESS HOLE
SCALE: NONE



SUMPS
SCALE: NONE

PRECAST COLLARS
SCALE: NONE



Drawing Title	DETAILS ELECTRICAL
---------------	-----------------------

Approved Project Director

FINAL SUBMITTAL

Project Title
CONNECT 500 TON CHILLER TO EES

Building Number	Checked CSW	Drawn SJR
-----------------	----------------	--------------

Location	CARL VINSON VA MEDICAL CENTER DUBLIN, GEORGIA
----------	--

Date
January 27 2012

Project No. _____

DRAWING NO.

Dwg. 2 Of 4