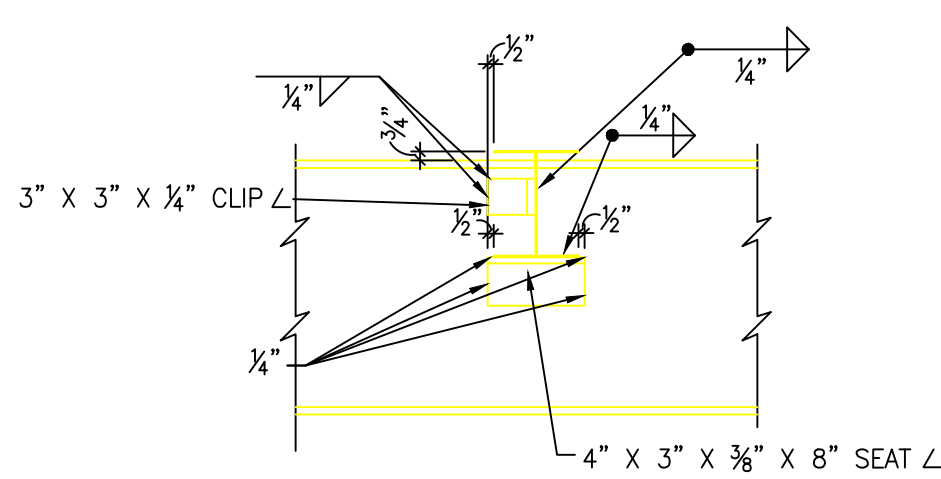


RIGID FRAME OVER SWIMMING POOLS

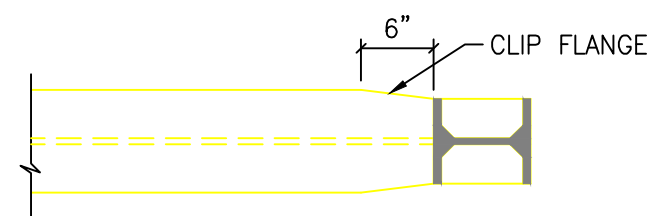
SCALE 1/4"=1'-0"



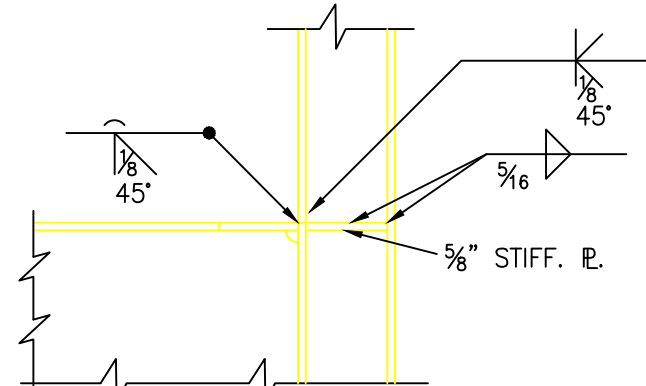
TYPICAL PURLIN CONNECTION

SCALE 3/4"=1'-0"

NOTE: SEE SHEET #115 FOR TYP. DETAILS OF FRAME STIFFENER CONNECTION



PLAN

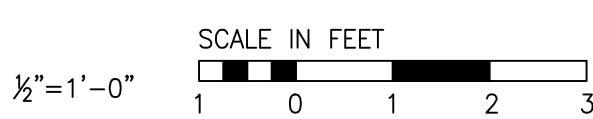


ELEVATION

ALTERNATE DETAIL @ EXTENDED COL. NO. 76 & 73A

SCALE: 3/4"=1'-0"

GRAPHIC SCALES



BLDG 6			
REVISION	DATE	DESCRIPTION	BY
WALTER HOOK & ASSOCIATES, INC. CHARLOTTE, NORTH CAROLINA WM. HENLEY DETTRICK, INC. WM. C. OLSEN ARCHITECTS-ENGINEERS IN ASSOCIATION WITH NEERGAARD, CRAIG & McCAGG HOSPITAL CONSULTANTS-NEW YORK, N.Y.			
DRAWN BY: R.V.W.		CORPS OF ENGINEERS U.S. ARMY CHARLESTON DISTRICT CHARLESTON, S.C.	
TRACED BY: JPR 10.		VETERANS ADMINISTRATION HOSPITAL SALISBURY, NORTH CAROLINA 960 BED NP HOSPITAL SWIMMING POOL RIGID FRAME DETAILS	
CHECKED BY: MER		APPROVED: DATE: DEC. 9, 1949	
SUBMITTED:		SCALE: CIV ENG-38-08T-50-	
APPROVED:		NO. 116	
CHIEF ENGINEER LT. COL. C. E. DISTRICT ENGINEER		DRAWING NUMBER VA44-31-11-S11	
V.A. PROJECT NO.2448		NUMBER OF SHEETS IN SET 471	