

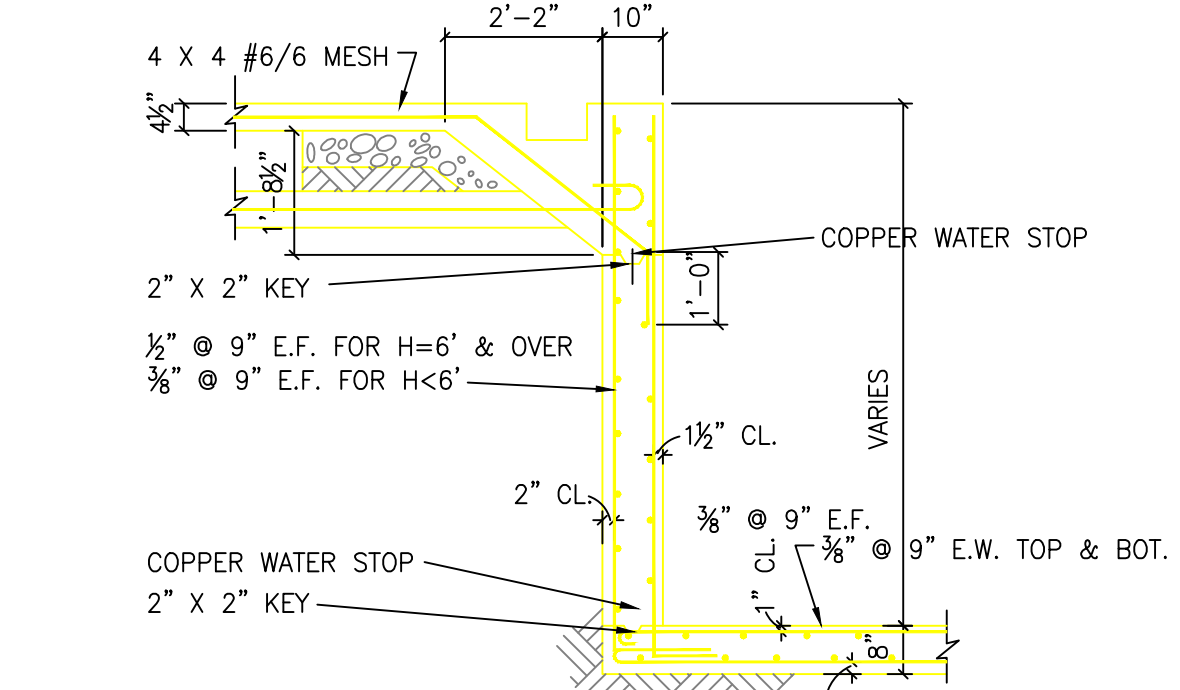
SECTION "G-G"  
SCALE  $\frac{3}{8}"=1'-0"$

### CORNER DETAIL

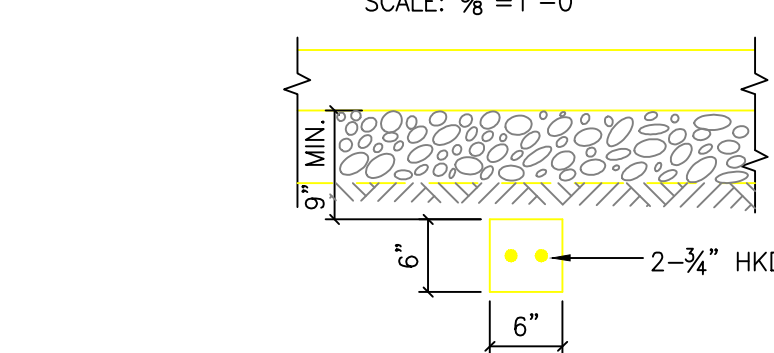


TYPICAL WALL SECTIONS  
SCALE  $\frac{3}{8}" = 1' - 0"$

SECTION "F-F"  
TYPICAL SECTION THRU MACH. RM.  
SCALE  $\frac{3}{8}" = 1' - 0"$

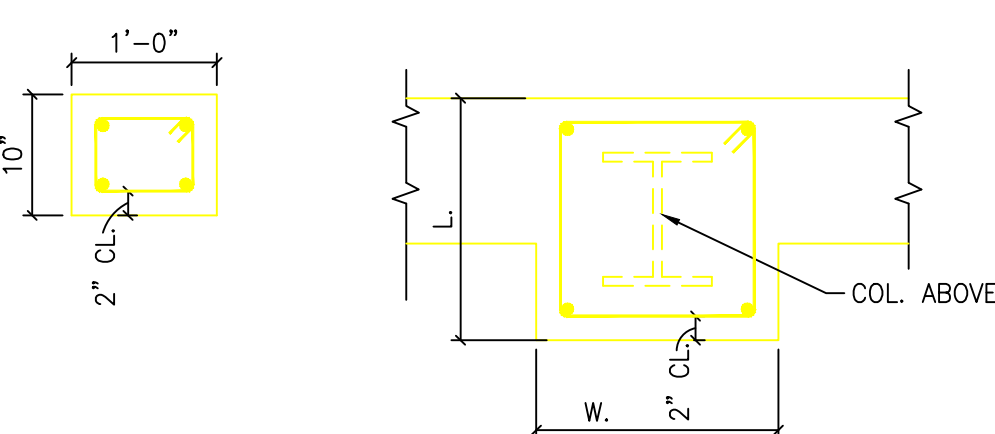


SECTION "H-H"  
TYPICAL POOL WALL REINFORCING



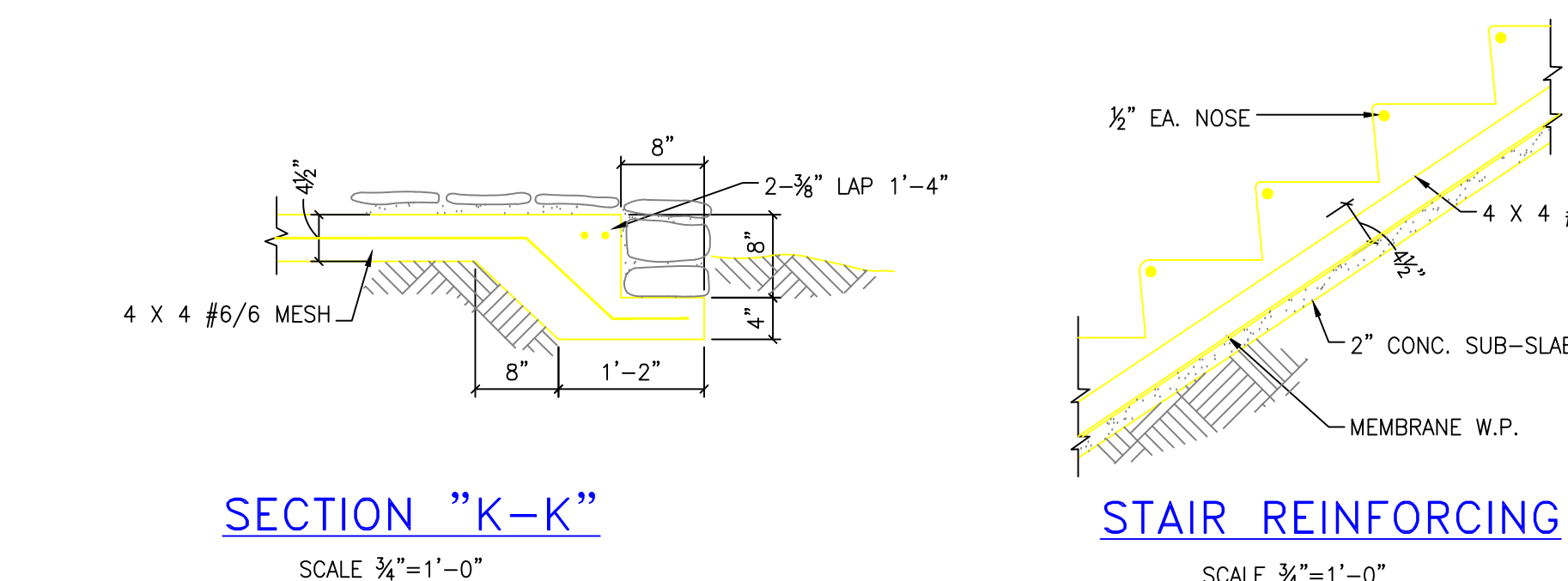
SECTION "J-J"  
COL. PIER STRUTS  
SCALE  $\frac{3}{4}"=1'-0"$

### TYPICAL COL. & PIER SECTIONS



NOTE: SEE FOOTING SCHEDULE FOR  
REINF. DETAILS & PIER SIZES.

NOTE: SEE FOOTING SCHEDULE FOR  
REINF. DETAILS & PIER SIZES.



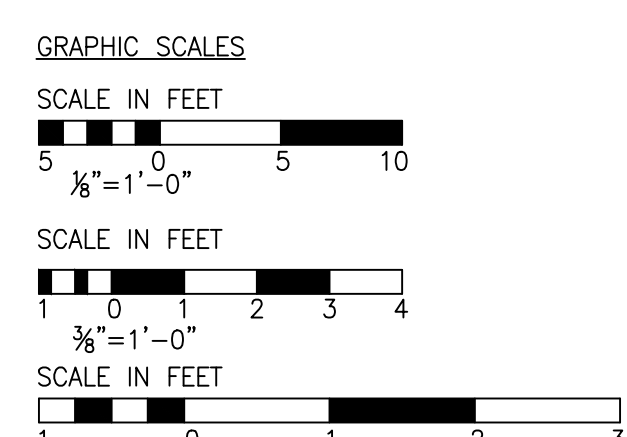
SECTION "K-K"

## STAIR REINFORCING

- NOTES
1. CONC. FOR SWIMMING POOL WALLS & SLABS TYPE "A-A" (3,750  $\frac{\text{kg}}{\text{m}^3}$ ) FOR WALLS, BEAMS & COLUMNS TYPE "A" (3,000  $\frac{\text{kg}}{\text{m}^3}$ ), AND FOR SLABS ON GRADE TYPE "B" (2,500  $\frac{\text{kg}}{\text{m}^3}$ )
  2. SEE SHEET #110 FOR TYPICAL FLOOR SLAB DETAILS.
  3. SEE SHEET #457 FOR STANDARD STRUCTURAL DETAILS.

CONCRETE COLUMN SCHEDULE				
	COL. NO. 4A	COL. NO. 50 THRU 54	COL. NO. 56 THRU 60 AND 62	
ELEV.	67M FL. 713.7083'			
ELEV. (H.P.)	LOOKER RM. FL. 702.8333'			
ELEV.	TOP OF PILE CAPS 701.5000			
COL. SIZE	10" x 12"	10" x 12"	10" x 12"	10" x 12"
REINF. BAR	4-#6	4-#6	4-#6	4-#6
TIES	½ Ø 10	½ Ø 10	½ Ø 10	½ Ø 10

'GROUND FLOOR PLAN'  
SCALE  $\frac{1}{8}"=1'-0"$



REVISION	DATE	DESCRIPTION	BY
<b>WALTER HOOK &amp; ASSOCIATES, INC.</b> CHARLOTTE, NORTH CAROLINA <b>WM. HENLEY DETTRICK, INC</b> RALEIGH, NORTH CAROLINA <b>WM. C. OLSEN</b> ARCHITECTS, ENGINEERS IN ASSOCIATION WITH NEEDHARD, CRAIG & McCAIG* HOSPITAL CONSULTANTS-NEW YORK, N.Y.			
DRAWN BY: <u>RWJ</u> TRACED BY: <u>RWJ, JR.</u> CHECKED BY: <u>JIH</u> SUBMITTED: _____ APPROVED: _____		<b>VETERANS ADMINISTRATION HOSPITAL</b> <b>SALISBURY, NORTH CAROLINA</b> <b>960 BED NP HOSPITAL</b> <b>SWIM, POOL-LOCKER &amp; SHOWER RMS-</b> <b>GROUND FL. FRAMING PLAN &amp; DETAILS</b>	
CHIEF ENGINEER _____ LT. COL. C. E. DISTRICT ENGINEER _____		DATE: _____ DEC. 9, 1949 CIV. ENG-38-081-50-_____ SCALE _____ SPEC. NO. _____ DRAWING NUMBER _____ ON SET _____ VA44-31-11-S4	
V.A. PROJECT NO.2448		109 471	