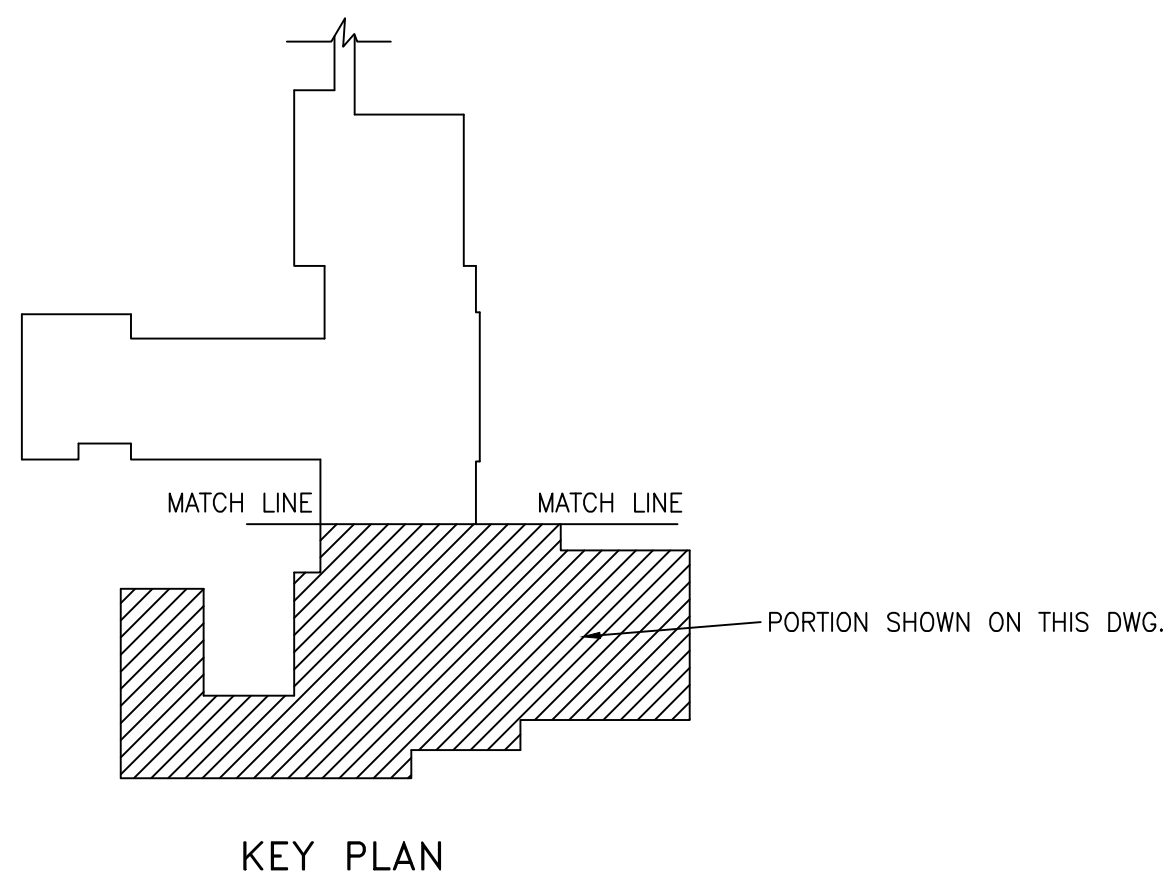
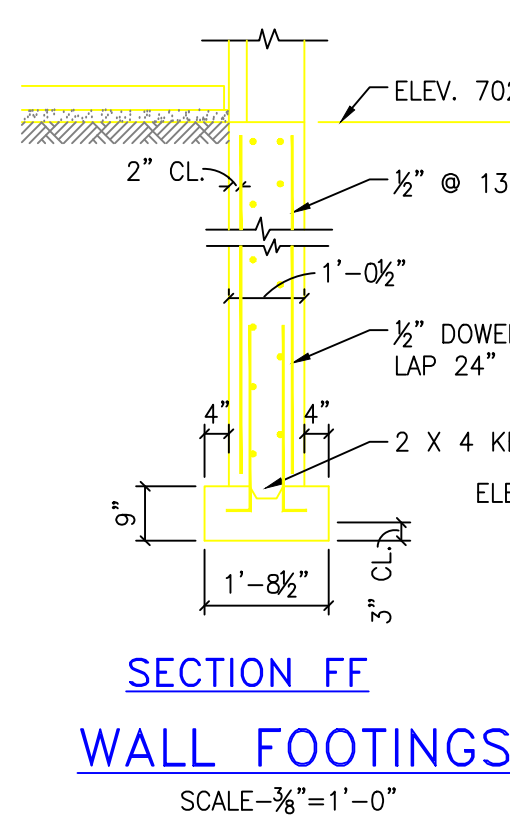


CONCRETE COL. SCHEDULE	
68A, 70A, 71A, & 72A	
POOL FL. ELEV. 702.6667'	
MACH. RM. FL. ELEV. 691.8333'	
TOP FTG. ELEV. 690.0000'	
COL. SIZE 12" X 10"	
REINF. BAR 4-#4	
TIES 1/2" @ 10"	



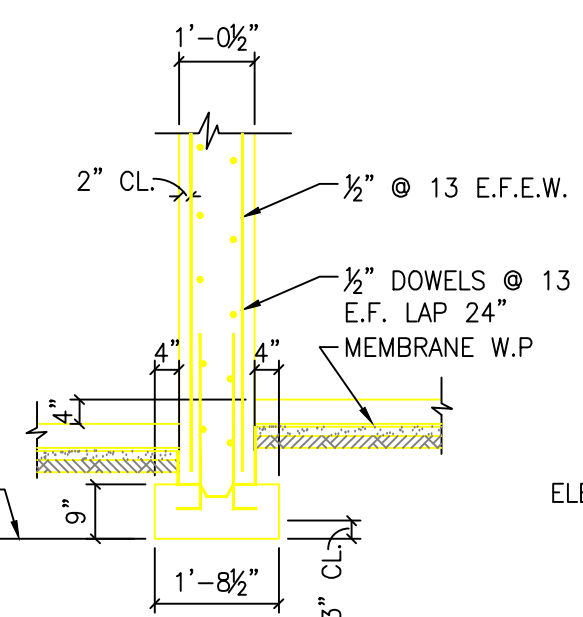
PLAN

TYPICAL SOIL BEARING FOOTING

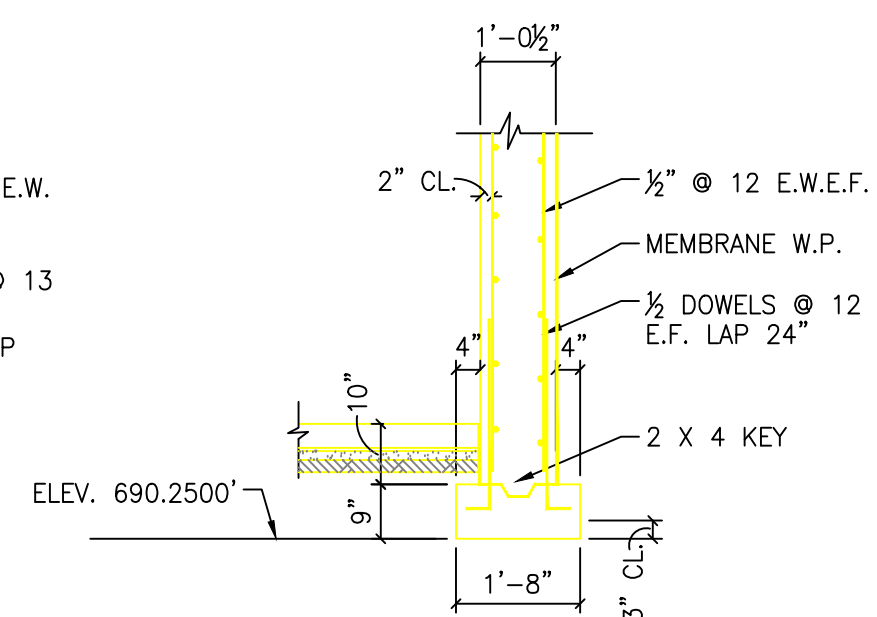


SECTION FF

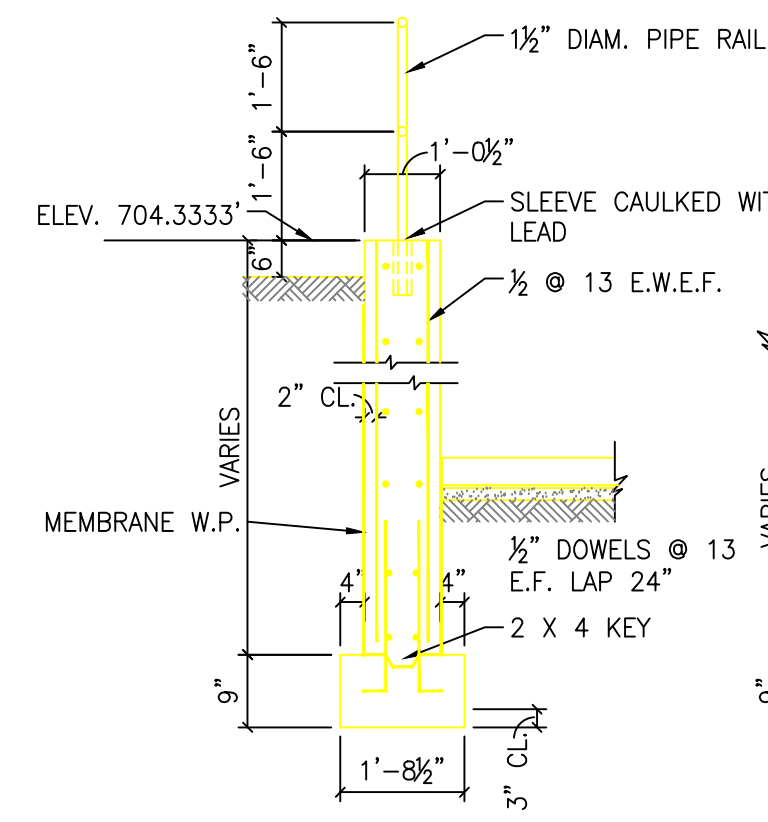
SCALE: 3/8"=1'-0"



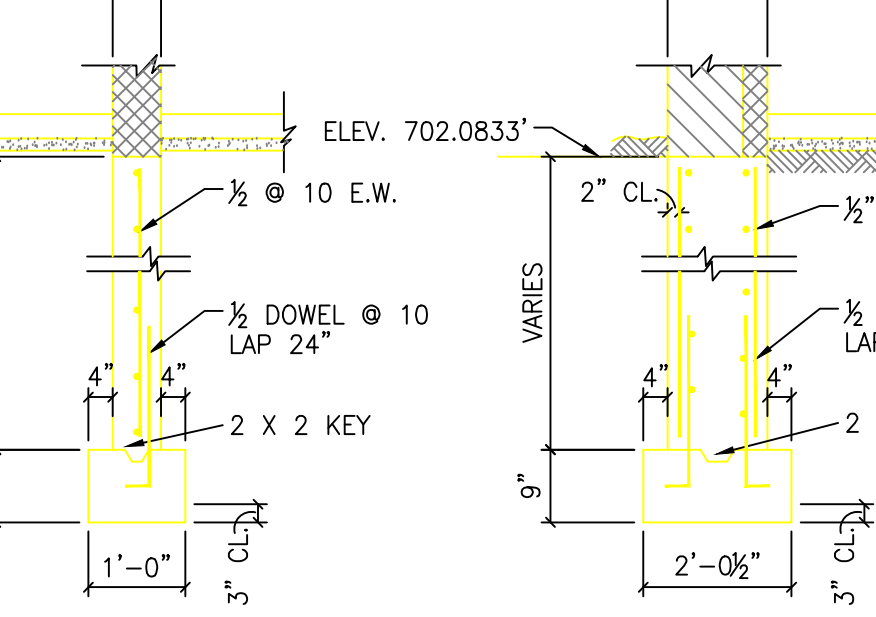
SECTION EE



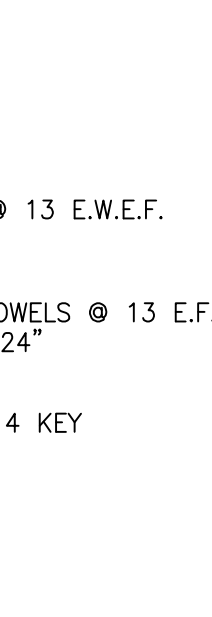
SECTION DD



SECTION CC



SECTION BB

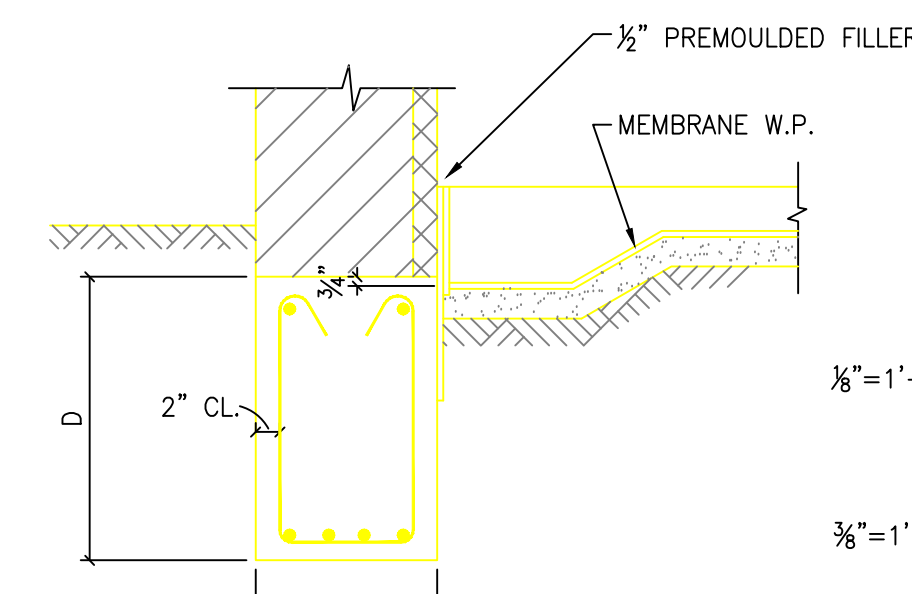


SECTION A-A

SOIL BEARING FOOTING SCHEDULE											
FTG. NO.	L	W	D	REINF. PERP. TO WALL	REINF. PARAL. TO WALL	ELEV. BOT. FTG.	L	W	DOWELS & VERT. REIN.	TIES	REMARKS
76	3'-6"	3'-6"	12"	6-#4	4-#4	690.0000'	1'-6"	1'-0"	4-#4	1/2" @ 12"	702.0833'
77	3'-6"	3'-6"	12"	6-#4	4-#4	694.0000'	1'-6"	1'-0"	4-#4	1/2" @ 12"	702.0833'
78	3'-6"	3'-6"	12"	6-#4	4-#4	696.8333'	1'-6"	1'-0"	4-#4	1/2" @ 12"	702.0833'
79	3'-6"	3'-6"	12"	6-#4	4-#4	697.1667'	1'-6"	1'-6"	4-#4	1/2" @ 12"	702.0833'
80	3'-2"	3'-2"	12"	4-#4	4-#4	697.0000'	1'-6"	1'-0"	4-#4	1/2" @ 12"	702.0833'
81	5'-2"	5'-2"	15"	9-#4	6-#4	689.7500'	1'-6"	1'-0"	4-#4	1/2" @ 12"	702.0833'
82	5'-2"	5'-2"	15"	9-#4	6-#4	694.0000'	1'-6"	1'-0"	4-#4	1/2" @ 12"	702.0833'
83	5'-2"	5'-2"	15"	9-#4	6-#4	696.8333'	1'-6"	1'-0"	4-#4	1/2" @ 12"	702.0833'
84	5'-2"	5'-2"	15"	9-#4	6-#4	697.1667'	1'-6"	1'-0"	4-#4	1/2" @ 12"	702.0833'
85	4'-6"	4'-6"	15"	8-#4	6-#4	697.0000'	1'-6"	1'-6"	4-#4	1/2" @ 12"	702.0833'
86	3'-2"	3'-2"	12"	4-#4	3-#4	690.0000'	1'-6"	1'-0"	4-#4	1/2" @ 12"	702.0833'
87	3'-2"	3'-2"	12"	4-#4	3-#4	694.0000'	1'-6"	1'-0"	4-#4	1/2" @ 12"	702.0833'
88	3'-2"	3'-2"	12"	4-#4	3-#4	696.8333'	1'-6"	1'-0"	4-#4	1/2" @ 12"	702.0833'
89	3'-2"	3'-2"	12"	4-#4	3-#4	697.1667'	1'-6"	1'-0"	4-#4	1/2" @ 12"	702.0833'
90	2'-10"	2'-10"	12"	4-#4	3-#4	697.0000'	1'-4"	1'-6"	4-#4	1/2" @ 12"	702.0833'
75	PROJECT WALL FTG. AROUND PIER						1'-4"	1'-4"	4-#4	1/2" @ 12"	702.0833'
68A	4'-2"	4'-2"	15"	7-#4	7-#4	688.7500'	1'-6"	10"	4-#4	1/2" @ 10"	702.6667'
69A	4'-4"	4'-4"	15"	8-#4	8-#4	688.7500'	1'-0"	10"	4-#4	1/2" @ 10"	702.6667'
70A	9'-0"	4'-0"	24"	8-#4	8-#4	688.0000'	1'-0"	10"	4-#4	1/2" @ 10"	702.6667'
71A & 72A	3'-8"	3'-8"	12"	6-#4	6-#4	688.7500'	1'-0"	10"	4-#4	1/2" @ 10"	702.6667'
73A	4'-0"	4'-0"	15"	7-#4	7-#4	688.7500'	1'-6"	10"	4-#4	1/2" @ 10"	702.6667'

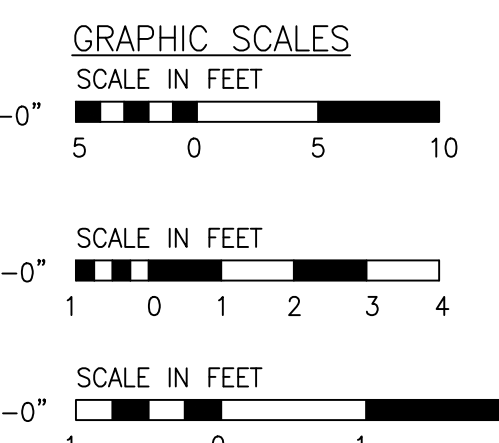
NOTES

- SOIL BEARING FOR SPREAD FOOTINGS 2000#
- CONC. FOR PILES TYPE "A" (3750#) CONC. FOR GRADE BEAMS & WALLS TYPE "A" (3000#) CONC. FOR PILE CAPS, SPREAD FTG'S., & FLOOR SLABS TYPE "B" (2500#)
- WALL SECTIONS FOR GYM SHOWN ON SHEET #109
- SEE SHEET #107 FOR GRADE BEAM REINFORCING BENDING DETAILS
- SEE SHEET #109 FOR TYPICAL PIER REINFORCING DETAILS
- SEE SHEET #457 FOR DETAILS OF EXTRA REINF. AROUND WALL OPENINGS.
- SEE SHEET #458 FOR PILE CAP DETAILS.



SECTION G-G
TYPICAL GRADE BEAM
SCALE: 3/8"=1'-0"

NOTE: FOLLOWING ESTIMATES ARE FOR ENTIRE BUILDING
ESTIMATED NUMBER OF PILES 316
ESTIMATED LENGTH OF PILING 6175



PILE FOOTING SCHEDULE											
FOOTING NO.	NO. OF PILES	PILES	PILE CAP	TYPE	ELEV. TOP OF PILES	L	W	DOWELS & VERT. REIN.	TIES	ELEV. TOP OF PIER	REMARKS
1, 5, 15, 16, 27 & 31A	1	4-#4 X 5'-0", 3/4" TIES @ 16"	710.0625'	1	711.3125'	1'-4"	1'-4"	4-#4	1/2" @ 12"	713.3125'	
2, 3, 4, 6, 10, 11, 13, 16, 17, 19, 21, 22, 24	1	4-#4 X 5'-0", 3/4" TIES @ 16"	710.0625'	1	711.3125'	1'-4"	1'-2"	4-#4	1/2" @ 12"	713.3125'	
7, 8, 9, 12, 14, 20, 23, 26 & 33 THRU 37	2	4-#4 X 5'-0", 3/4" TIES @ 16"	710.5625'	1	711.8125'	1'-0"	1'-0"	4-#4	1/2" @ 12"	713.3125'	SEE DETAIL SH. #110
40	2		699.5000'	2	701.5000'	SEE PLAN	4-#4	1/2" @ 12"	713.3125'		
41	2		699.5000'	2	701.5000'	1'-8"	1'-6"	4-#4	1/2" @ 16"	713.7083'	
42, 43, 45 & 46	3		699.5000'	3	701.5000'	1'-8"	1'-8"	4-#4	1/2" @ 16"	713.1979'	
46A, 56 THRU 60 & 62 THRU 66	1	4-#4 X 5'-0", 3/4" TIES @ 12"	700.2500'	1	701.5000'	1'-0"	10"	4-#4	1/2" @ 10"	713.7083'	
38	1	DO	700.2500'	1	701.5000'	1'-2"	1'-2"	4-#4	1/2" @ 12"	713.3125'	
39	1		700.2500'	1	701.5000'	1'-2"	1'-4"	4-#4	1/2" @ 12"	713.3125'	
55 & 67	2		699.5000'	2	701.5000'	1'-6"	1'-6"	4-#4	1/2" @ 16"	713.7083'	
50 THRU 54	2	4-#4 X 5'-0", 3/4" TIES @ 12"	699.5000'	2	701.5000'	1'-0"	10"	4-#4	1/2" @ 10"	713.7083'	
48	1		700.2500'	1	701.5000'	1'-4"	1'-4"	4-#4	1/2" @ 12"	714.0000'	PIER DIMENSION CHANGES ABOVE GRADE FOR BRICK VENEER
49 & 61	3		699.5000'	3	701.5000'	1'-6"	1'-6"	4-#4	1/2" @ 16"	713.7083'	
68 & 74	3		698.5833'	3	690.5833'	1'-8"	1'-6"	4-#4	1/2" @ 16"	713.7083'	DO
69 THRU 73	3		698.5833'	3	690.5833'	1'-8"	1'-8"	4-#4	1/2" @ 16"	713.1979'	
A, B, C, D, E, F, & G	1		700.2500'	1	701.5000'	NOPER					6-#4 X 3-6" DOWELS INTO WALL
47	3		694.5000'	3	696.5000'	SEE PLAN	4-#4	1/2" @ 16"	713.7083'		
44	3		695.5000'	3	697.5000'	1'-8"	1'-8"	4-#4	1/2" @ 16"	713.1979'	

ESTIMATED LENGTH PILING=1950'

GRADE BEAM SCHEDULE							
BEAM MARK	D	W	ELEV. TOP OF BEAM	STR. BARS	BENT BARS	STIRRUPS & SP FROM FACE EA. SUPPORT	REMARKS
2 GB 1	2'-0	1'-2 1/2	713.3125'	2-#4	2-#4		
2 GB 2	2'-0	1'-2 1/2	713.3125'	2-#4	2-#4		
2 GB 3	2'-0	1'-2 1/2	713.3125'	2-#4	2-#4		
2 GB 4	2'-0	1'-2 1/2	713.3125'	2-#4	1-#4		
2 GB 5	2'-0	1'-2 1/2	713.3125'	2-#4	2-#4		
2 GB 6	2'-0	1'-2 1/2	713.3125'	2-#4	2-#4		
2 GB 7	2'-0	1'-2 1/2	713.3125'	2-#4	2-#4		
2 GB 8	2'-0	1'-2 1/2	713.3125'	2-#4	2-#4		
2 GB 9	2'-0	1'-2 1/2	713.3125'	2-#4	2-#4		
2 GB 10	2'-0	1'-2 1/2	713.3125'	2-#4	2-#4		
2 GB 11	2'-0	1'-2 1/2	713.3125'	2-#4	1-#4	% @ 6, 10, 10	
2 GB 12	2'-0	1'-2 1/2	713.3125'	2-#4	1-1/2#	% @ 6, 10, 10, 10	
2 GB 13	2'-0	1'-2 1/2	713.3125'	2-#4	1-1/2#	% @ 6, 10, 10, 10	
2 GB 14	2'-0	1'-2 1/2	713.3125'	2-#4	1-#4	% @ 6, 10, 10, 10	
2 GB 15	2'-0	1'-2 1/2	713.3125'	2-#4	1-1/2#	% @ 6, 10, 10, 10, 10	
2 GB 16	2'-0	1'-2 1/2	713.3125'	2-#4	2-#4		
2 GB 17	2'-0	1'-2 1/2	713.3125'	2-#4	2-#4		
2 GB 18	2'-0	1'-2 1/2	713.3125'	2-#4	2-#4		
2 GB 19	2'-0	1'-2 1/2	713.3125'	2-#4	2-#4		
2 GB 20	2'-0	1'-2 1/2	713.3125'	2-#4	2-#4		2-#4 X 7'-0" TOP @ COL. #40 EXTEND 2'-6" IN TO WALL & 2-#4 X 8'-0" TOP @ F16, #74 & #18 EXTEND 2'-6"
1 GB 1	2'-4	1'-0	702.0833'	2-#4	2-#4		

BLDG 6			
8/23/55	DATE	DESCRIPTION	BY
3-8-50	ADDED NUMBER 2	LENGTH OF ESTIMATE OF PILING	
WALTER HOOK & ASSOCIATES, INC.			
CHARLOTTE, NORTH CAROLINA			
WM. HENLEY DETRICK, INC.			
WILMINGTON, NORTH CAROLINA			
WM. C. OLSEN			
ARCHITECTS & ENGINEERS			
IN ASSOCIATION WITH			
NEERGAARD, CRAIG & McCAGG			
HOSPITAL CONSULTANTS-NEW YORK, N.Y.			
DRAWN BY: R.V.W.			
CHECKED BY: TFM			
SUBMITTED: MER			
APPROVED:			
CHIEF ENGINEER			
V.A. PROJECT NO.2448			
CORPS OF ENGINEERS			
U.S. ARMY			
CHARLESTON DISTRICT			
VETERANS ADMINISTRATION HOSPITAL			
SALISBURY, NORTH CAROLINA			
960 BED NP HOSPITAL			
LIBRARY, GYM & SWIMMING POOL			
FOUNDATION & FOOTING PLANS			
DRAWING NUMBER			
VA44-31-11-S1-R			
NUMBER OF SHEETS			
106R			
471			