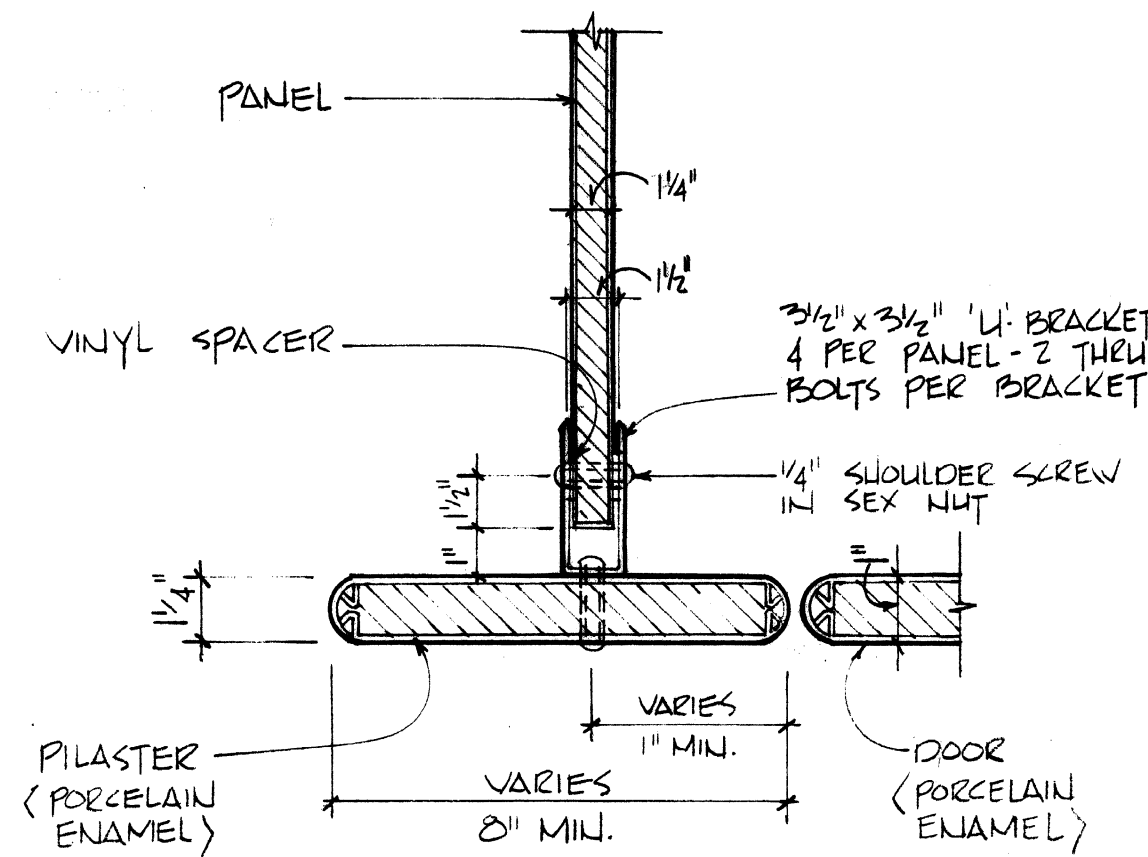
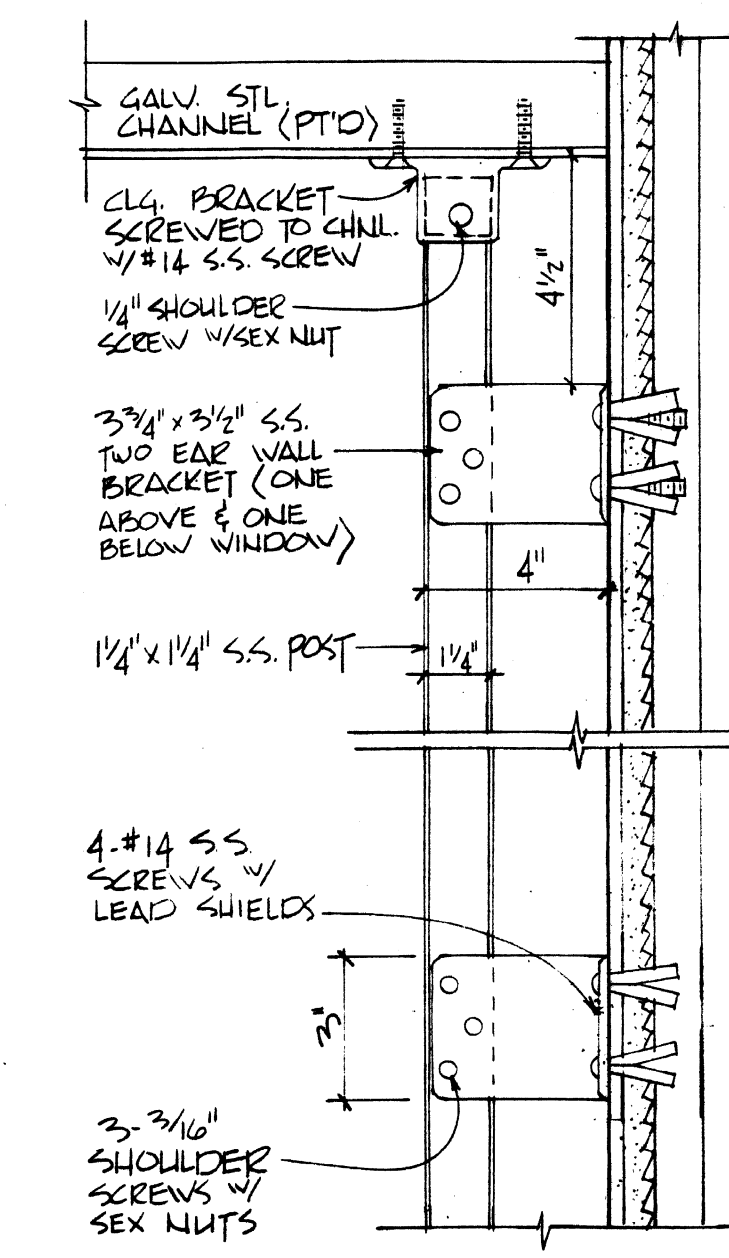


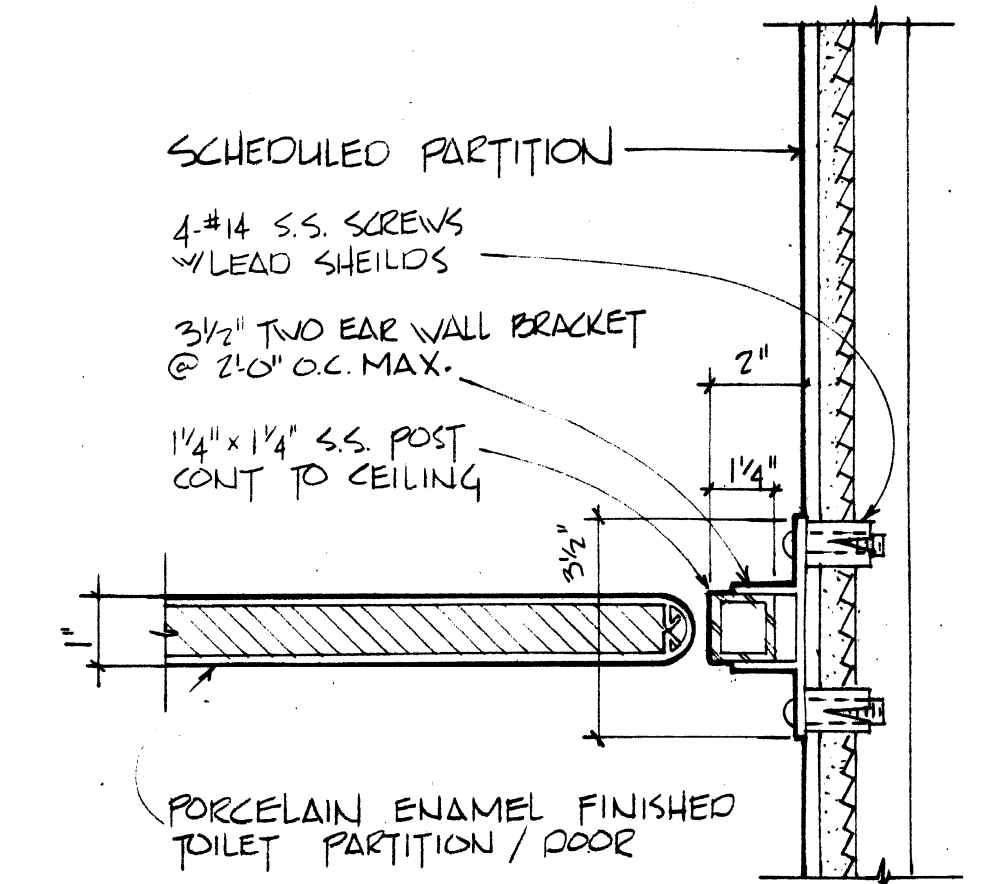
Pool Section



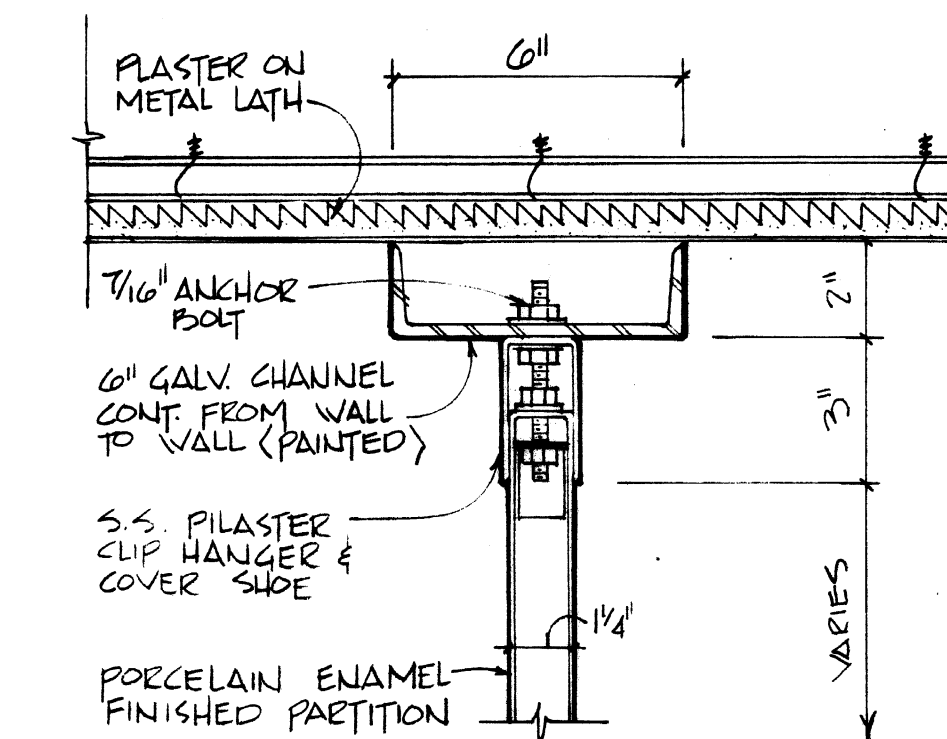
TOILET PARTITION DETAIL
TO METAL PLASTER



TOILET PARTITION DETAIL
S.S. POST

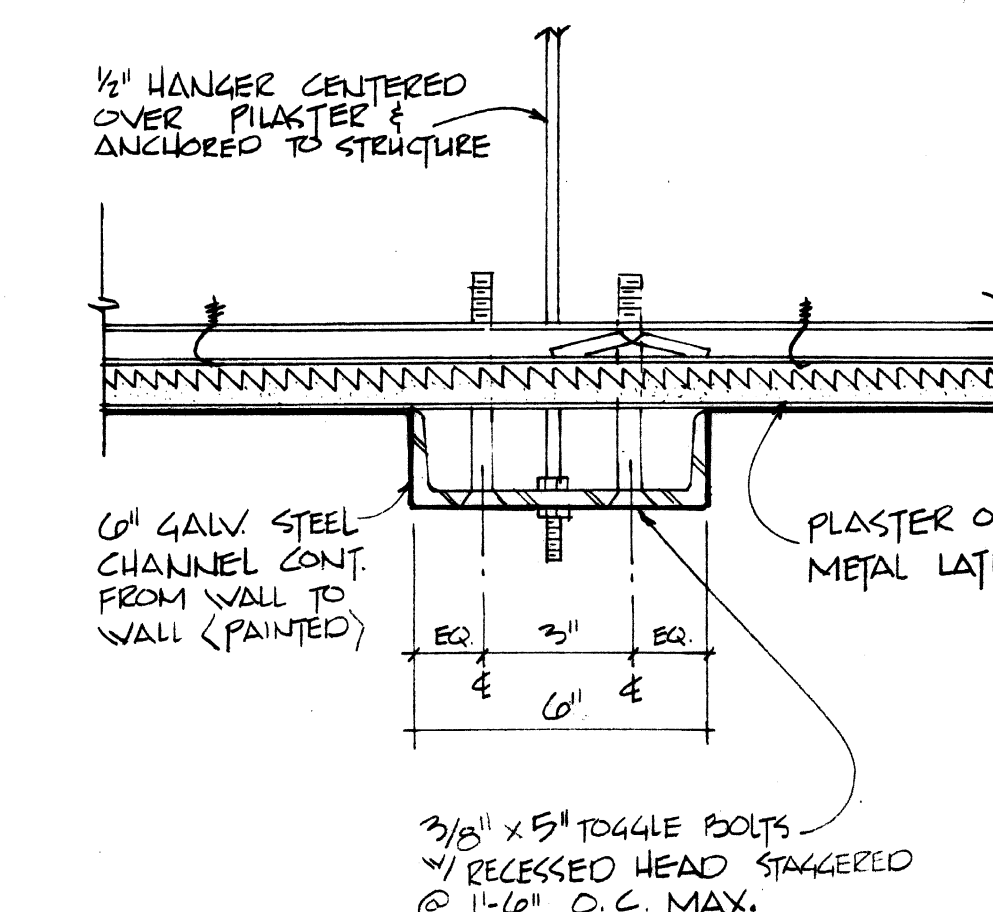


TOILET PARTITION DETAIL
STAINLESS STL. POST @ WALL

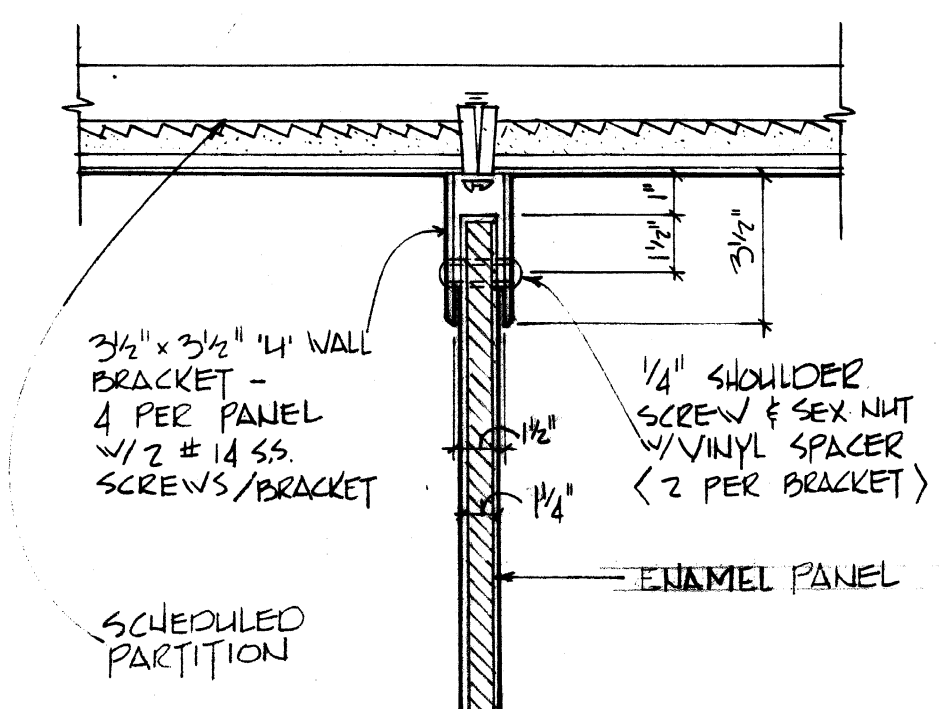


* MIN. TWO 7/16\"/>

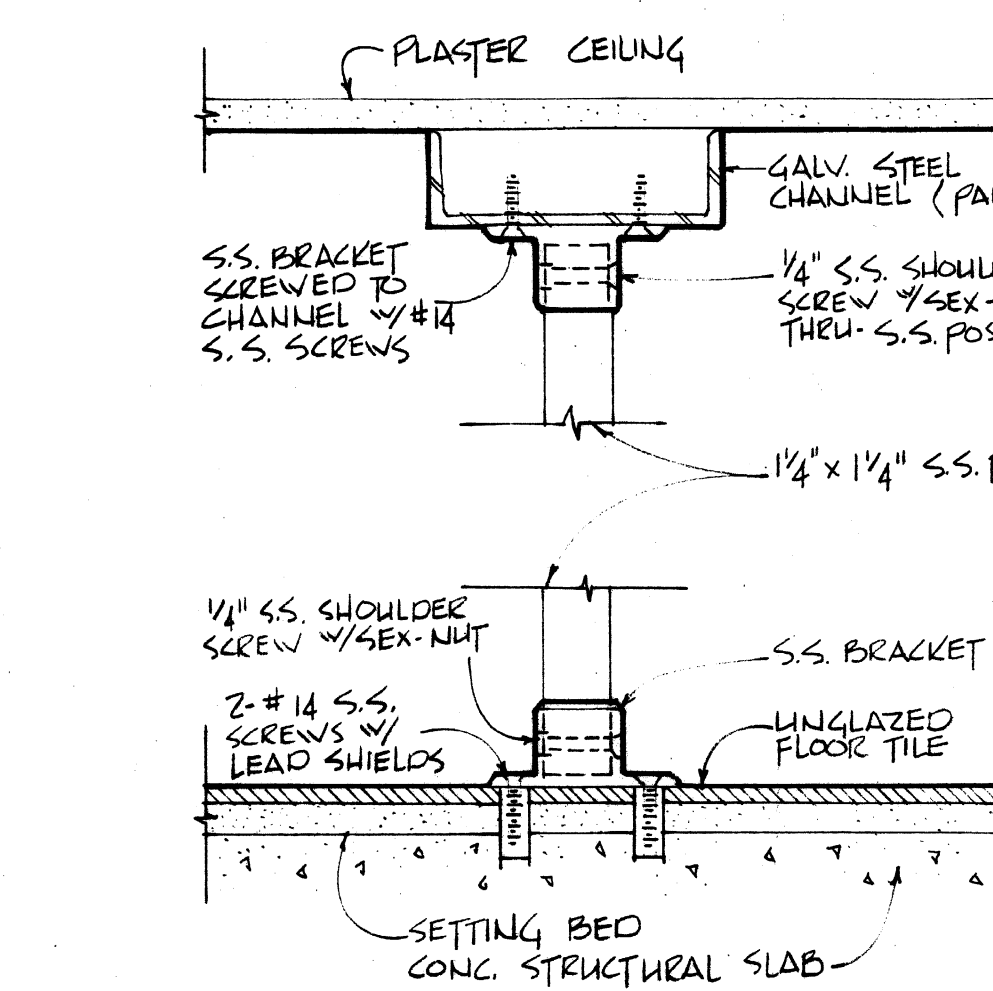
TOILET PARTITION DETAIL
CEILING CONNECTION



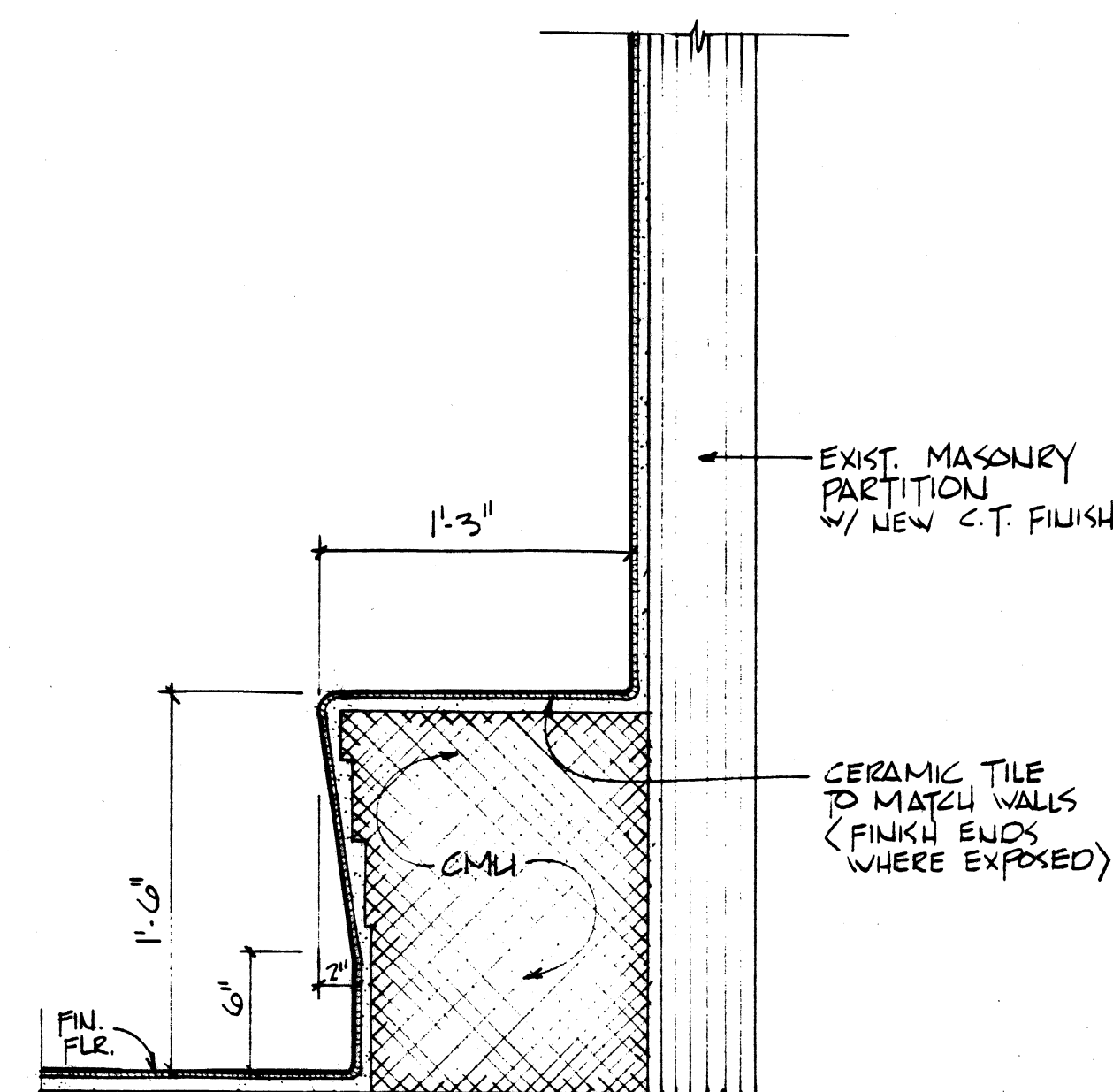
TOILET PARTITION DETAIL
CHANNEL @ CEILING



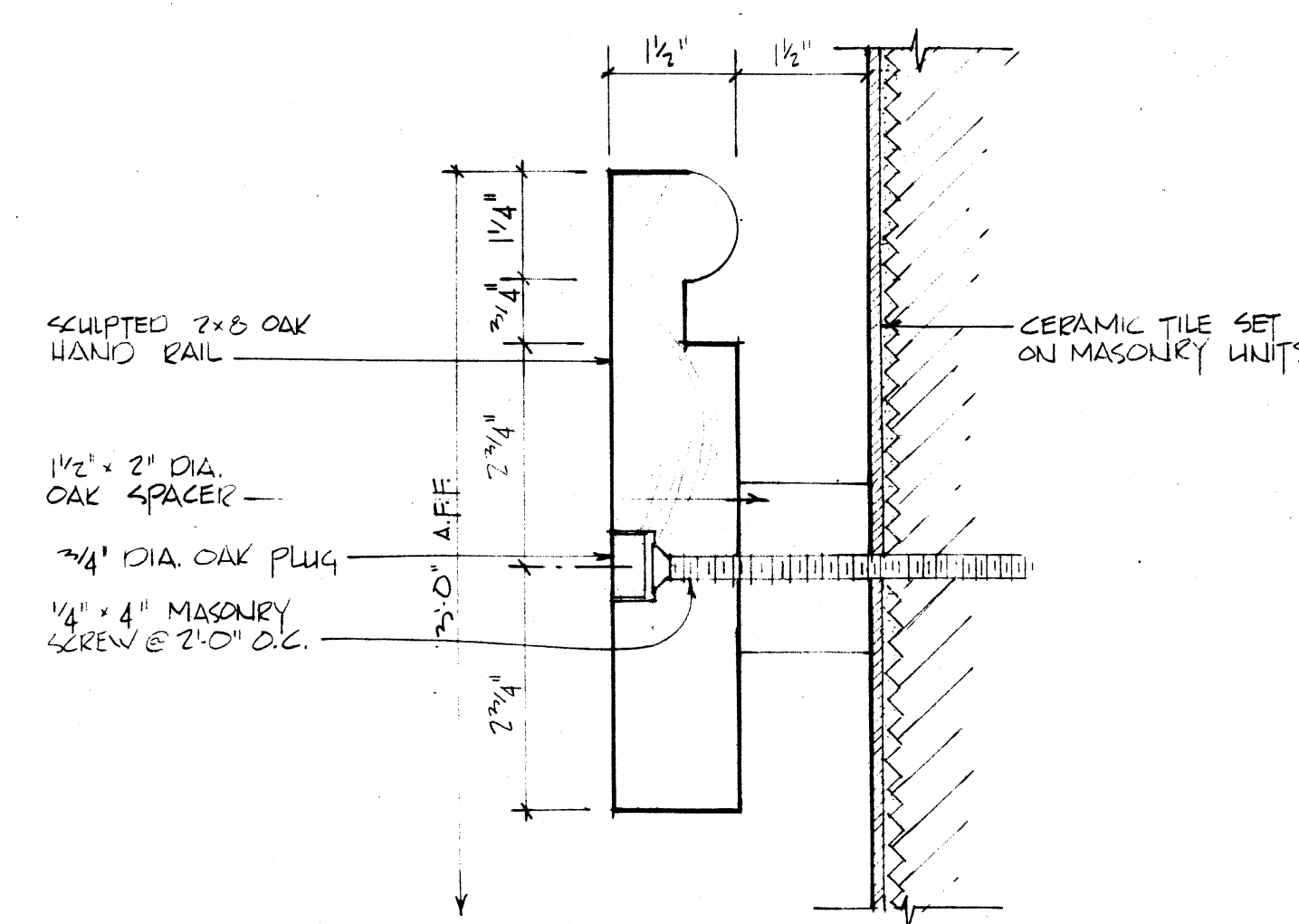
TOILET PARTITION DETAIL
WALL CONNECTION



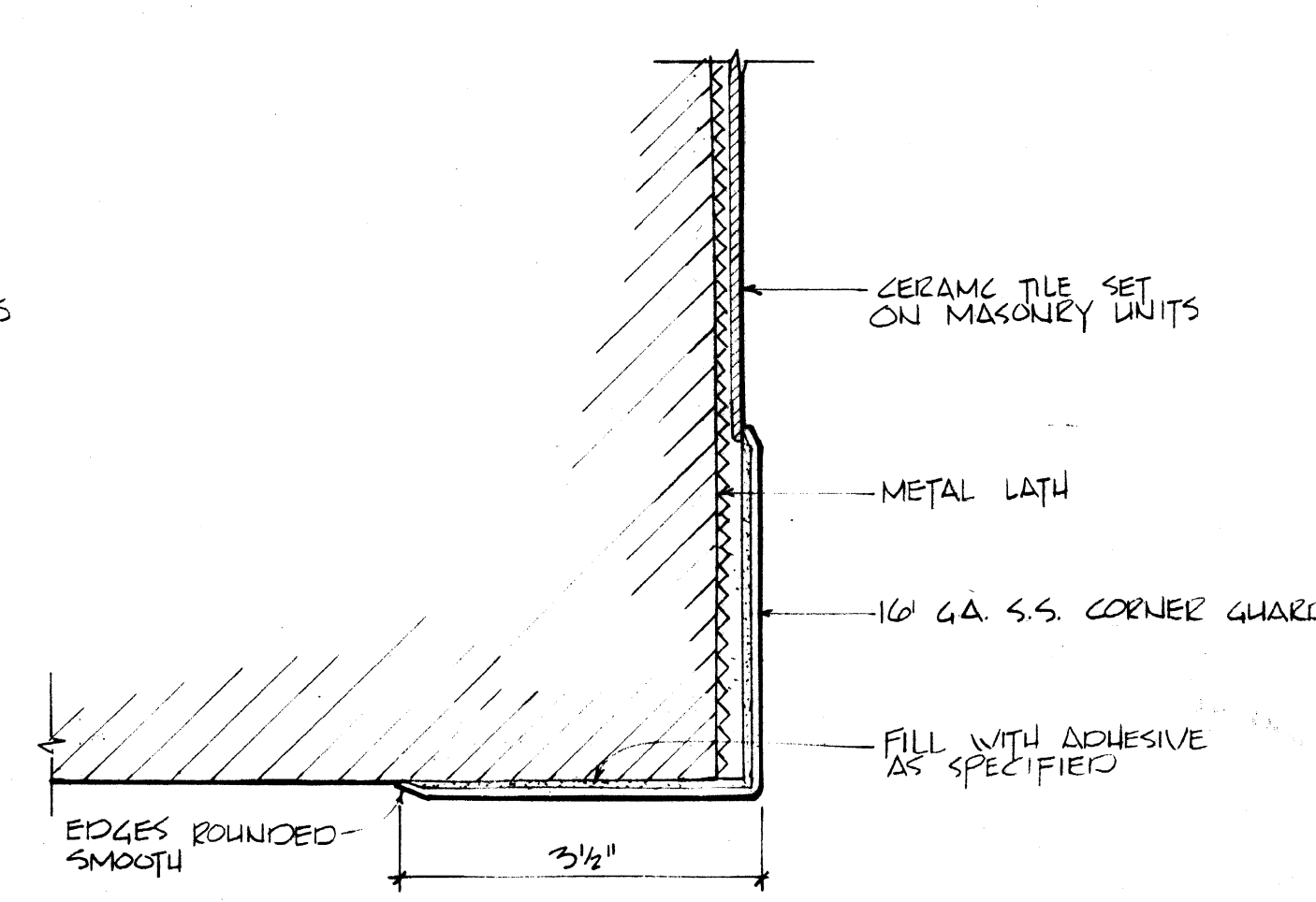
TOILET PARTITION DETAIL
FLOOR TO CEILING S.S. POST



CERAMIC TILE SITTING BENCH DETAIL

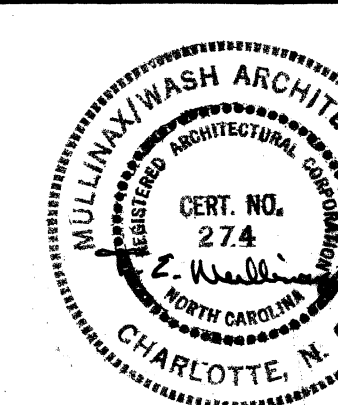


HAND RAIL DETAIL



CORNER GUARD DETAIL

THIS DRAWING WAS SCAN FROM THE ORIGINAL DRAWING AND THE SCALES MIGHT NOT BE ACCURATE.



Mullinax/Wash Architects, P.A.

SUITE 1480
UCB BUILDING
CHARLOTTE, NORTH CAROLINA 28201
TEL: (704) 333-9851

Drawing Title	Project Title	Date
Fixture Details	Therapeutic Pool Renovations	7.12.84
Approved: Division Chief	Building Number	Project No.
Approved: Service Director	Six	659037
Location	Checked	Drawn
Salisbury, N.C.	TEAM	TLC
		DRAWING NO.
		A-4
		Dwg. OF 5

Veterans Administration