

CONTINUOUS FOOTING SCHEDULE				
MARK	WIDTH	THICKNESS	REINFORCING	
			LONG DIRECTION	SHORT DIRECTION
CF1.5	1'-6"	1'-0"	(2) #4	REF DETAIL
CF2.5	2'-6"	1'-0"	(3) #5	REF DETAIL

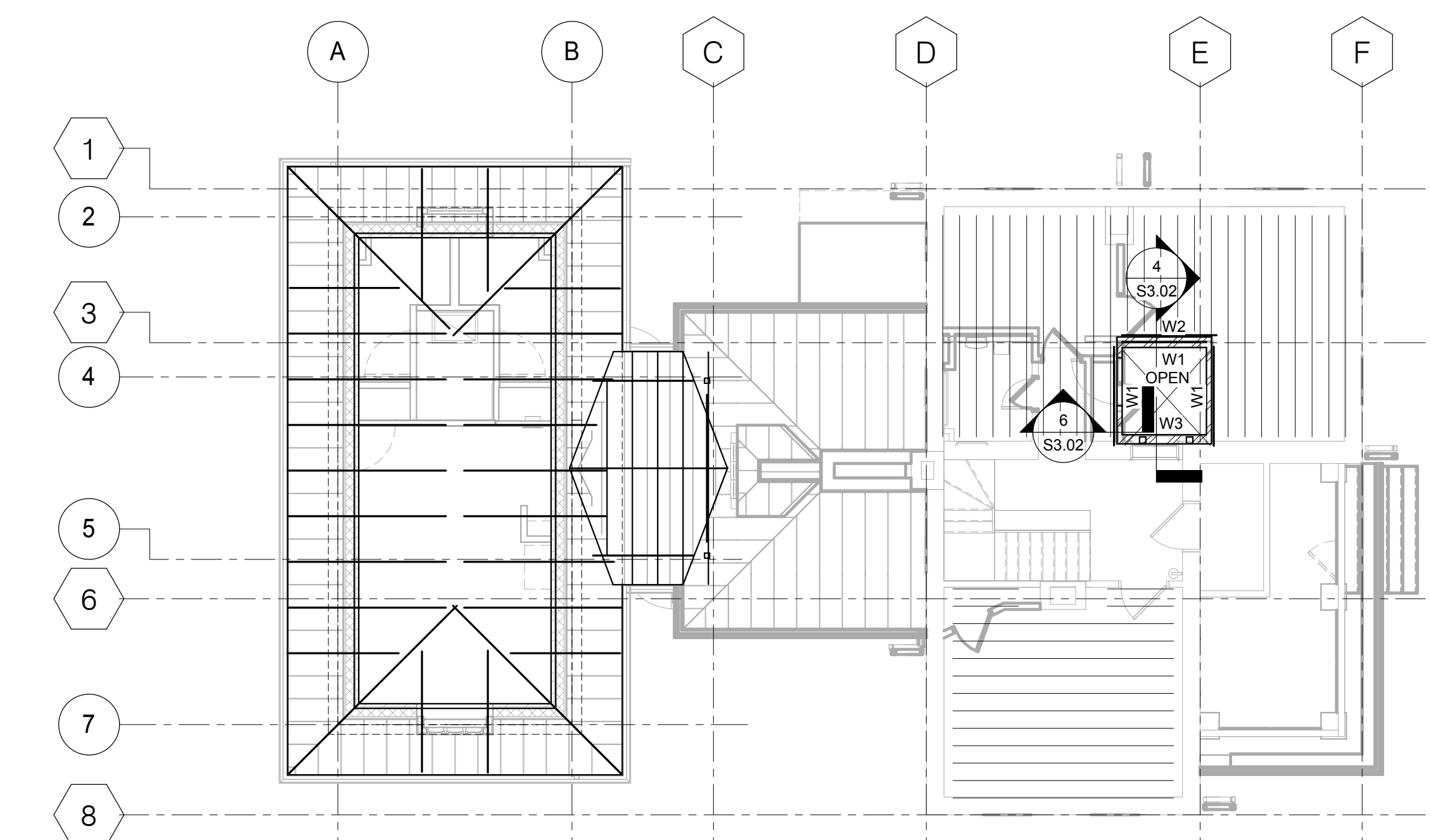
CFSF WALL SCHEDULE			
MARK	CFSF SIZE	SPACING	NOTES
W1	4" C-H STUD (20 GA)	24" OC MAX	-
W2	362S162-54	16" OC	-
W3	600S162-43	16" OC	-

NOTES:
1. REFER TO 2/S3.02 FOR BASE CONNECTION, UNO.

1 FOUNDATION PLAN

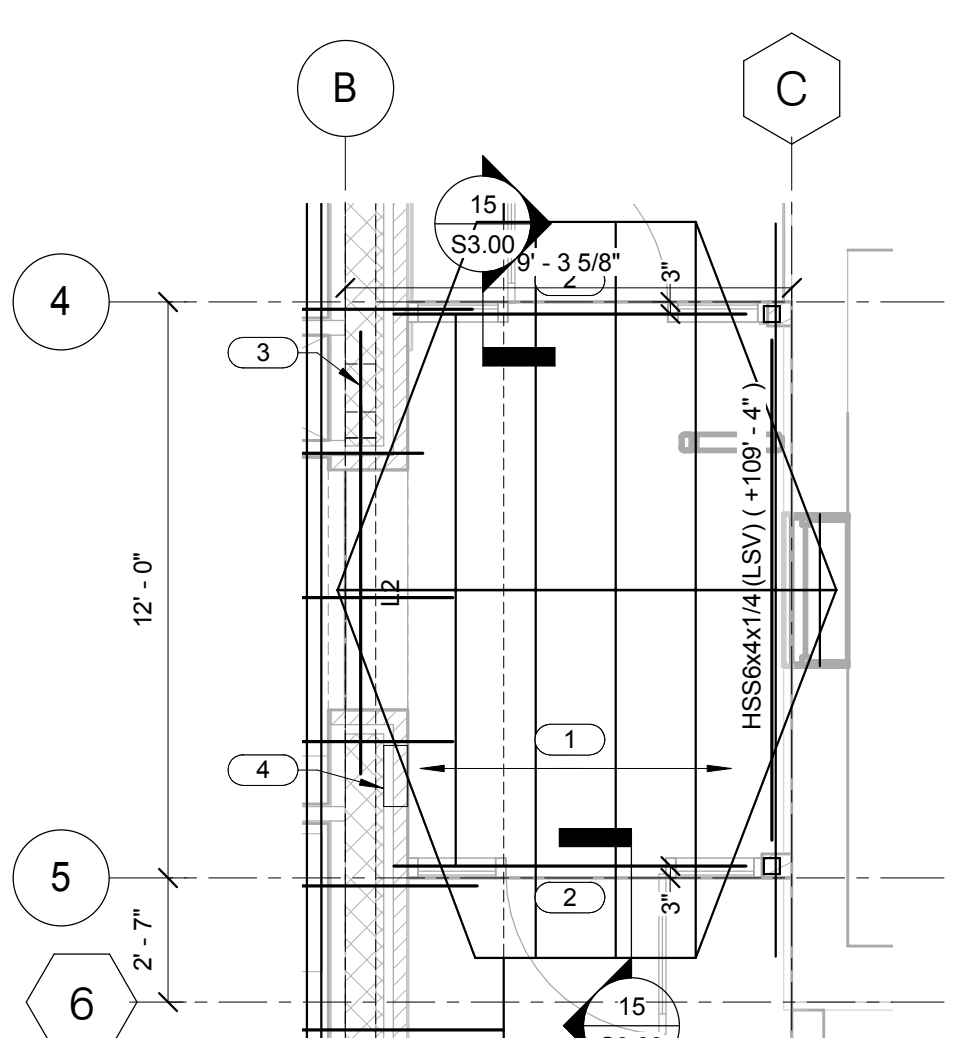
- 1/8" = 1'-0"
NOTES:
- TOP OF FOOTING ELEVATION (+90'-0") UNO.
 - CF# INDICATE SPREAD AND CONTINUOUS FOOTINGS. REFER TO SCHEDULE FOR SIZE AND REINFORCING.
 - PROVIDE 2" x 6" x 2" - 6" CORNER BARS FOR FOOTING AND WALL INTERSECTIONS. BAR SIZE AND QUANTITY TO MATCH LONGITUDINAL AND HORIZONTAL BARS.
 - REFER TO 4 AND 5/S3.00 FOR TYPICAL STRUCTURAL SLAB CONSTRUCTION DETAILS.
 - DOWEL NEW WALL AND FOOTING HORIZONTAL REINFORCING INTO EXISTING STONE WALL WITH ADHESIVE (REF GENERAL NOTES) (4" EMBEDMENT) AND BITUMEN WATERSTOP VERTICAL UP WALL.
 - W# INDICATES CFSF STUD WALL. REFER TO SCHEDULE FOR SIZE AND SPACING.
 - ELEVATOR PIT AND RAIL DESIGN BASED ON ORION LULA ELEVATOR BY SAVARIA.

- KEYNOTES:
- EXISTING CONCRETE SLAB ON GRADE. T/E(S) SLAB EL (+92'-4 3/4").
 - 4" SLAB ON GRADE WITH 6x6 W1.4W1.4 WWR. T/S LAB ELEVATION (+91'-0").
 - NEW CONCRETE STAIR INTO LOWER BASEMENT - REFER TO 5/S3.01.
 - NEW SANITARY LINE UNDER EXISTING FOOTING LIMIT EXCAVATION BELOW FOOTING TO 1'-0" WIDTH TO MINIMIZE IMPACT ON EXISTING FOOTING.
 - SUMP PIT BASIN WITH BASE CONCRETE SLAB - REFER TO P2.01 FOR MORE INFORMATION.
 - NEW 4" SLAB ON GRADE WITH 6x6 W1.4W1.4 WWR. T/S LAB EL (+92'-4 3/4"). MATCH EXISTING ELEVATION AT EDGES AND SLOPE TO FLOOR DRAIN. ONLY REMOVE AND REPLACE THE CONCRETE SLAB IN MAXIMUM 6'-0" WIDE SECTION TO ENSURE BOTTOM OF EXISTING WALL REMAINS BRACED.
 - STEP NEW SLAB TO AVOID UNDER PINNING EXISTING FOOTING. REFER TO ARCHITECTURAL DRAWINGS FOR LOCATION - REFER TO 1/S3.01.
 - HSS5x5x1/4 CONTINUOUS TO TOP OF ELEVATOR SHAFT. SPLICE AS NEEDED FOR INSTALLATION PER DETAIL 3/S3.02. PROVIDE ELEVATOR RAIL SUPPORT PER 3/S3.02.



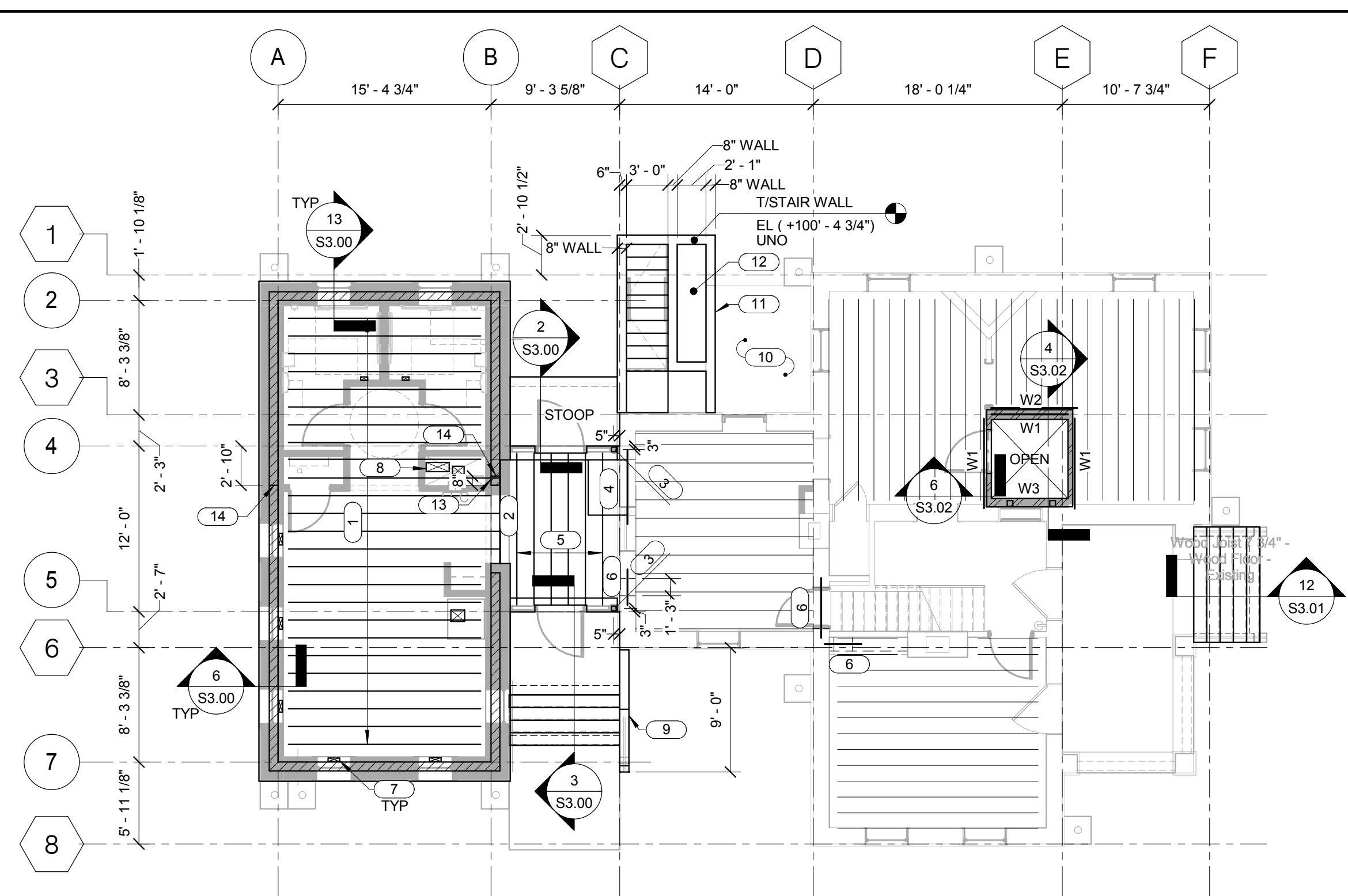
3 SECOND FLOOR FRAMING PLAN

- 1/8" = 1'-0"
NOTES:
- W# INDICATES CFSF STUD WALL. REFER TO SCHEDULE FOR SIZE AND SPACING.



4 ENLARGED ROOF FRAMING PLAN

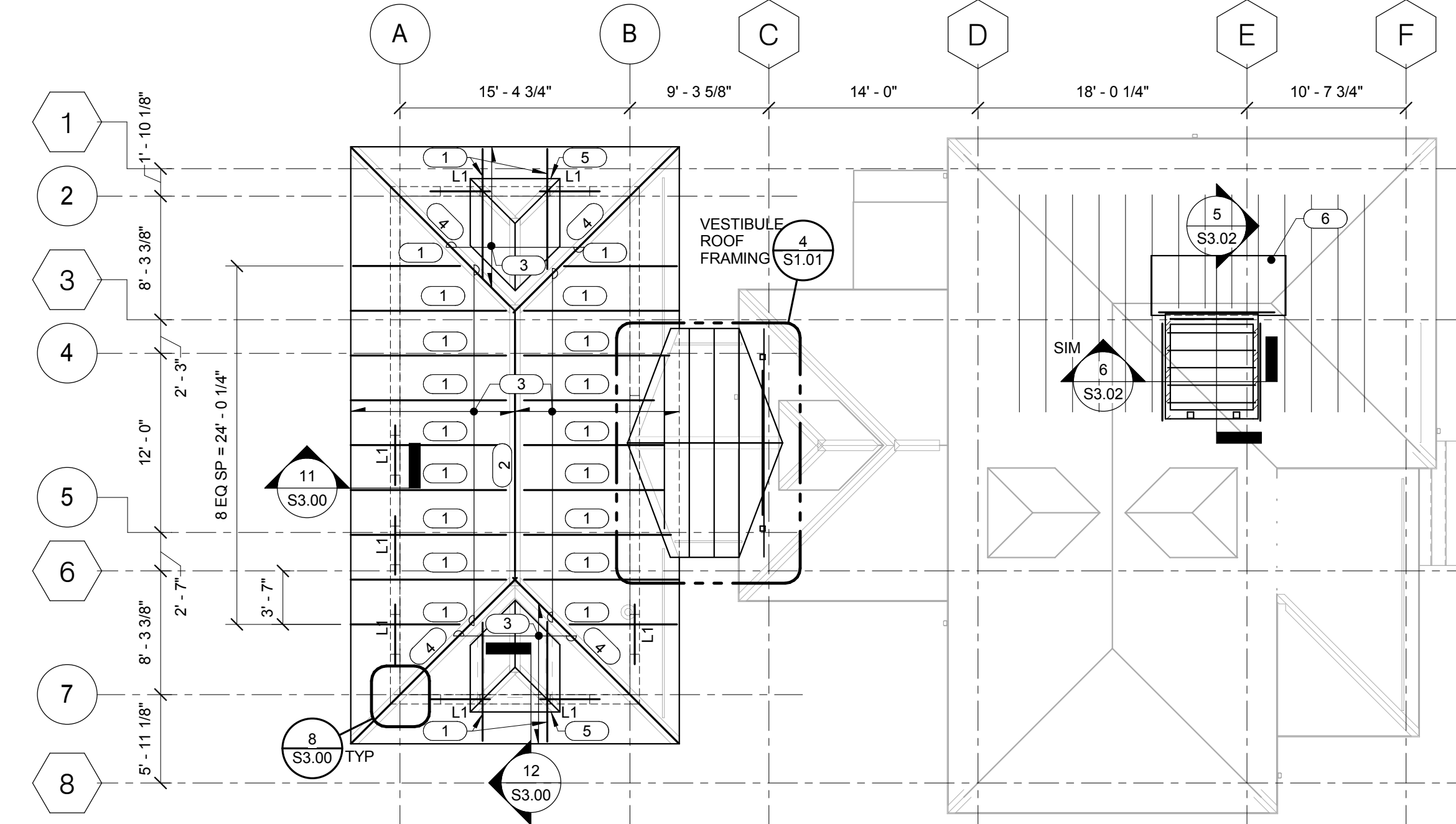
- 1/4" = 1'-0"
NOTES:
- L2 INDICATES LINTEL IN STRUCTURAL MASONRY WALL - REFER TO 7/S3.00 FOR DETAIL.
 - ROOF SHEATHING ON TRUSSES = 5/8" THICKNESS. REFER TO ARCHITECTURAL DRAWINGS FOR TOP OF SHEATHING ELEVATION.
- KEYNOTES:
- WOOD TRUSS AT 24" OC - REFER TO 1/S3.01 FOR PROFILE AND LOADS.
 - HSS6x4x3/8 (LSV) EL (+108'-0") - REFER TO 15/S3.00, 3/S3.01 AND 4/S3.01 FOR DETAILS.
 - L3 1/2 x 3 1/2 x 3/8 LOOSE LINTEL OVER VENT - PROVIDE AT LEAST 4" END BEARING FOR EACH LINTEL. REFER TO MECHANICAL DRAWINGS FOR ELEVATIONS/LOCATION.
 - L3 1/2 x 3 1/2 x 3/8 LOOSE LINTEL OVER CABINET UNIT HEATER - REFER TO MECHANICAL DRAWINGS FOR MORE INFORMATION. PROVIDE AT LEAST 4" END BEARING.



2 FIRST FLOOR FRAMING PLAN

- 1/8" = 1'-0"
NOTES:
- FLOOR SHEATHING = 3/4" TONGUE AND GROOVE. REFER TO GENERAL NOTES FOR FASTENING AND STRENGTH REQUIREMENTS. REFER TO ARCHITECTURAL DRAWINGS FOR TOP OF SHEATHING ELEVATION.
 - TOP OF CONCRETE WALL ELEVATION (+100'-0") UNO.
 - CONCRETE MASONRY WALLS SHOWN ARE 8" AND REINFORCED WITH #5 VERTICALS AT 32" OC. REFER TO 9 AND 9/S3.00 FOR TYPICAL MASONRY DETAILS.
 - W# INDICATES CFSF STUD WALL. REFER TO SCHEDULE FOR SIZE AND SPACING.
- KEYNOTES:
- 11 7/8" I-JOIST (TJI 230 OR EQUIVALENT) @ 16" OC.
 - 3/4"x11 7/8" LVL (FASTEN TOGETHER WITH (3) 16d NAILS AT 16" OC) WITH SIMPSON MBUS5611.58 HANGERS EACH END (INTO CONCRETE WALLS - REFER TO DETAIL 14/S3.00).
 - HSS4x4x1/4 - REFER TO 2 AND 3/S3.01 FOR DETAILS.
 - CONCRETE LINTEL FOR NEW OPENING THROUGH THE EXISTING STONE WALL - REFER TO 9/S3.01.

- 9 1/2" I-JOIST (TJI 230 OR EQUIVALENT) @ 16" OC.
- CONCRETE LINTEL OVER OPENING FOR DUCT (MAX OPENING WIDTH OF 20") - REFER TO 8/S3.01.
- VENT THROUGH THE FLOOR - COORDINATE JOIST SPACING WITH VENT PLACEMENT UNDER WINDOWS AND IN WALLS. MAX JOIST SPACING IS 16" OC. REFER TO MECHANICAL DRAWINGS FOR MORE INFORMATION.
- DUCT WORK THROUGH CHASE - COORDINATE JOIST SPACING WITH DUCTWORK. MAX JOIST SPACING IS 16" OC.
- TOP OF WALL SLOPES WITH STAIRS - REFER TO ARCHITECTURAL DRAWINGS FOR MORE INFORMATION AND RAILINGS.
- EXISTING CONCRETE SLAB EL (+99'-2") VIF.
- 8" WIDE CONCRETE CURB ON EXISTING CONCRETE SLAB WITH #4 HORIZONTAL DOWEL CURB INTO EXISTING WITH #4 DOWELS AT 18" OC (4" EMBEDMENT).
- MASONRY WALL CANTILEVERS OFF BASEMENT WALL TO NORTH. PROVIDE 24" DEEP BOND BEAM WITH (2) #5 TOP AND BOTTOM AT BOTTOM OF BOND BEAM EL (+100'-0"). BOND BEAM TO EXTEND OVER BASEMENT WALL AT LEAST 4'-0" WITH CONTINUOUS REINFORCING AND FULL GROUT. SHORE CANTILEVER UNTIL WALL HAS REACHED 75% DESIGN STRENGTH. REFER TO 11/S3.01.
- CONTROL JOINT IN CMU WALL - REF 9/S3.00.



5 ROOF FRAMING PLAN

- 1/8" = 1'-0"
NOTES:
- L1 INDICATES LINTEL IN STRUCTURAL MASONRY WALL - REFER TO 7/S3.00 FOR DETAIL.
 - REFER TO S0.00 FOR NAILING SCHEDULE.
 - TOP OF CMU WALL EL (+110'-0").
 - GLULAM SUPPLIER TO DESIGN BEAMS FOR THE FOLLOWING GRAVITY LOADS:
DL = 25 PSF + SELF WEIGHT
SL = 25 PSF BALANCED PLUS UNBALANCED
WL = REFER TO S0.00 FOR UPLIFT

- KEYNOTES:
- 3.5"x6" GLULAM BEAM BETWEEN MASONRY WALL AND RIDGE BEAM - REFER TO 10 AND 11/S3.00 AND 16/S3.00 FOR CONCEPTUAL DETAILS.
 - 5.5"x14" GLULAM RIDGE BEAM - REFER TO 10/S3.00 AND 16/S3.00 FOR CONCEPTUAL DETAILS.
 - 2x6 TONGUE AND GROOVE DECKING (CONTROLLED RANDOM LAYOUT AT LONG ROOF AND SIMPLE SPAN AT SHORT END WITH DORMERS), WITH 5/8" PLYWOOD SHEATHING ON TOP. FASTEN DECKING TO SUPPORTS WITH 16d TOENAIL THROUGH TONGUE AND FACE NAIL AND PLYWOOD TO DECK PER S0.00 (CONSIDER GLULAM AS SUPPORT).
 - 3.5"x6" GLULAM BEAM BETWEEN MASONRY WALL AND RIDGE BEAM - REFER TO 16/S3.00 AND 7/S3.02 FOR CONCEPTUAL DETAILS (FINAL DESIGN BY SUPPLIER).
 - DORMER - ALIGN GLULAM WITH WALLS ABOVE. REFER TO 6/S3.01 AND ARCHITECTURAL DRAWINGS FOR MORE INFORMATION.
 - 5/8" SHEATHING ATTACHED TO EACH JOIST AT 6" OC WITH 8d NAILS. SHEATHING TO BE 4" WIDE X LENGTH NEEDED TO EXTEND TO CONTINUOUS CEILING JOIST ON EACH SIDE OF OPENING.

BID SET DOCUMENTS

No.	Revisions	Date

CONSULTANTS:
ENGINEERING CONSULTANTS
 The FUTURE BUILT SMARTER®
 823 26TH AVENUE
 CHICAGO, ILLINOIS 60611
 312.786.0673
 FAX: 312.786.0597
 www.kjww.com

STRUCTURAL | MECHANICAL | ELECTRICAL
 TECHNOLOGY | MEDICAL EQUIPMENT SOLUTIONS

I HEREBY CERTIFY THAT THIS PLAN, SPECIFICATION OR REPORT WAS PREPARED BY ME OR UNDER MY DIRECT SUPERVISION, AND THAT I AM A DULY LICENSED PROFESSIONAL ENGINEER UNDER THE LAWS OF THE STATE OF ILLINOIS.

PRINT NAME: DAN J. HUNTINGTON
 SIGNATURE:

DATE: 02-26-16
 LICENSE #: 101489

ARCHITECT/ENGINEERS:

ANDERSON ENGINEERING
 ENGINEERING • ARCHITECTURE • LAND SURVEYING
 ENVIRONMENTAL SERVICES • LANDSCAPE ARCHITECTURE

Anderson Engineering of Minnesota, LLC
 13605 1st Avenue North
 Suite 100
 Plymouth, MN 55441
 763-412-4000 (f) 763-412-4090 (f)
 www.ae-mn.com

AE PROJECT NO.: 13802

Drawing Title
FLOOR AND FRAMING PLAN

Approved: Project Director

Project Title
LODGE REHABILITATION

Location
 FT LEAVENWORTH NATIONAL CEMETERY
 LEAVENWORTH, KS

Date
 02-25-2016

Checked
 TODBAR

Drawn
 MATORT

Project Number
 887CM3005

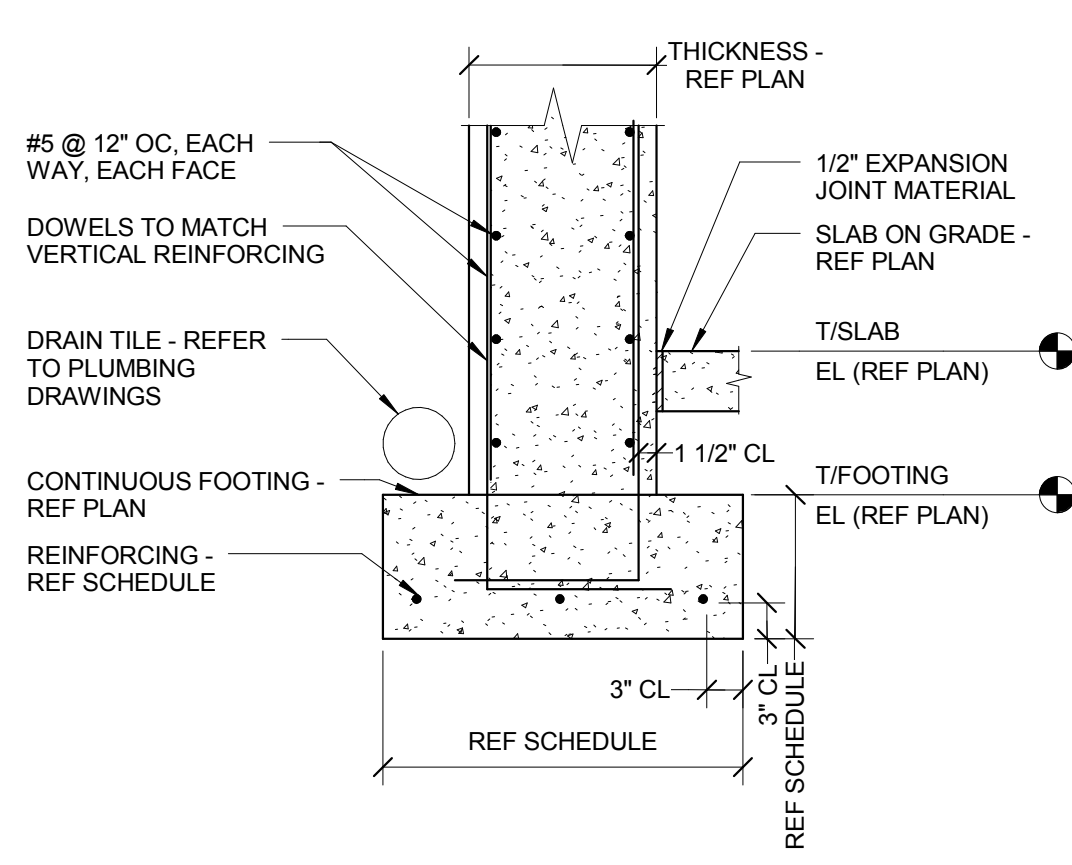
Building Number

Drawing Number
S1.01

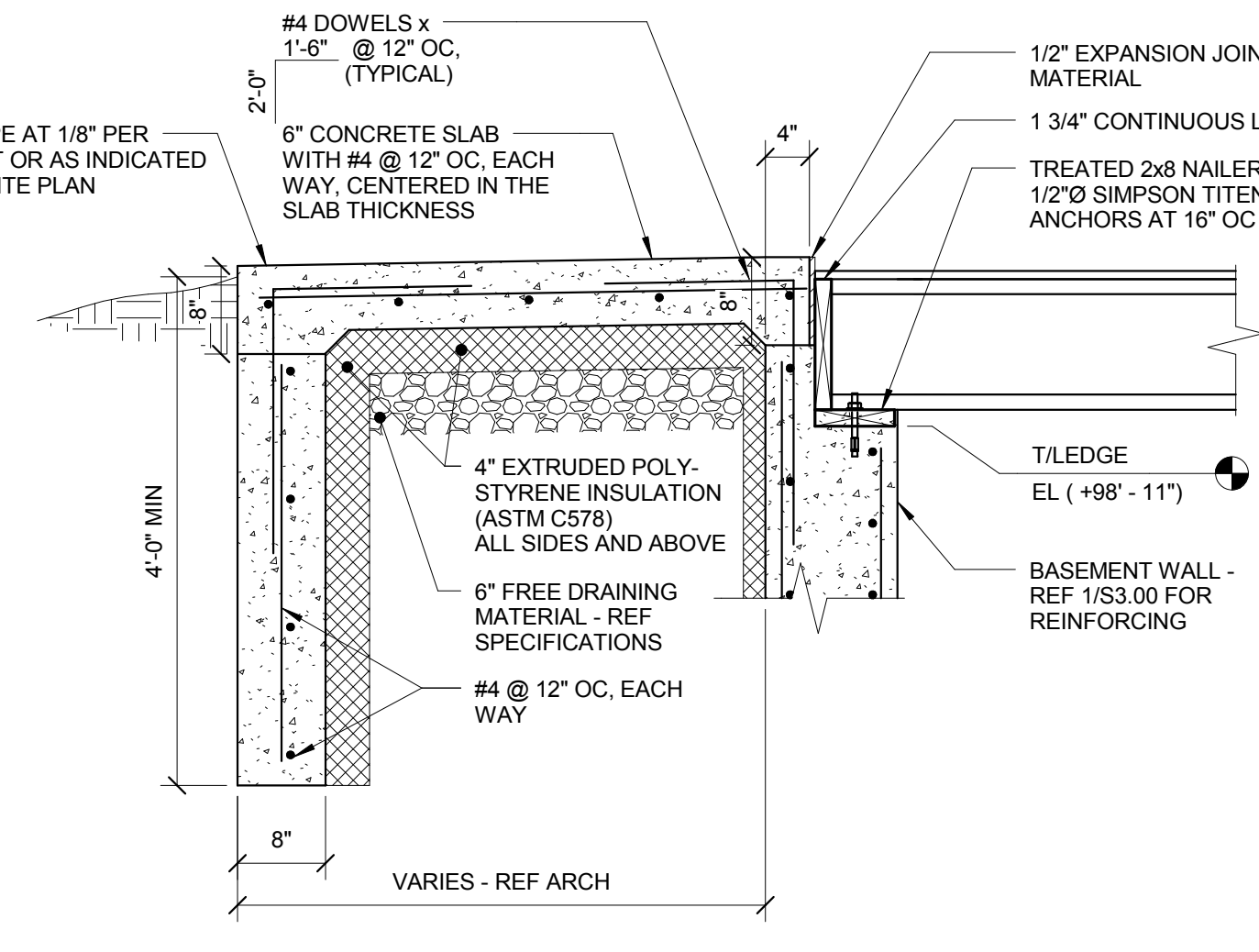
Dwg. 38 of 67

Office of Construction and Facilities Management

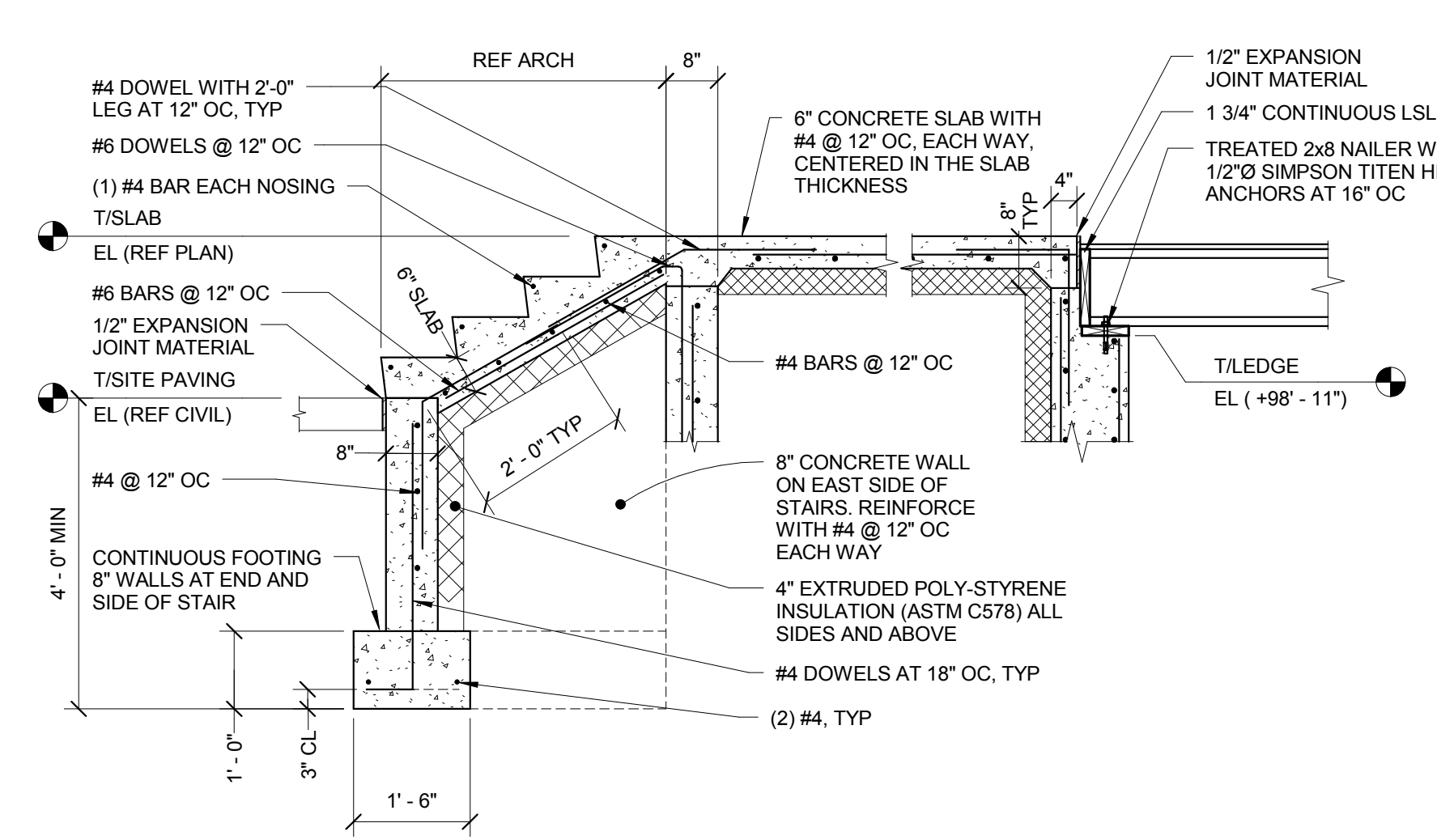
VA U.S. Department of Veterans Affairs



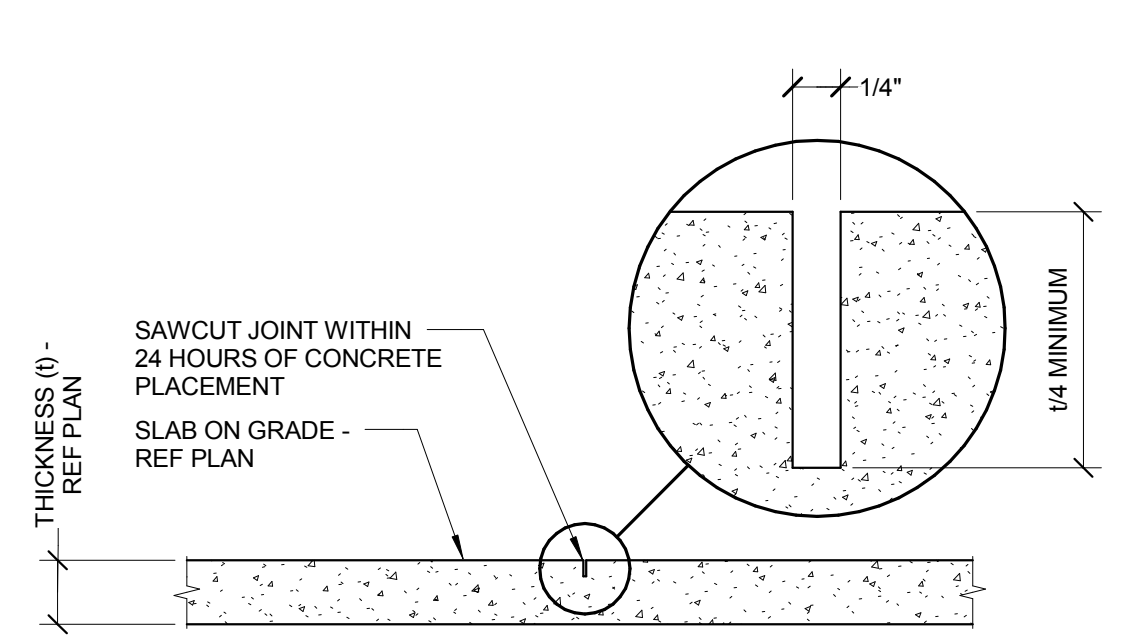
1 TYPICAL FOUNDATION WALL
3/4" = 1'-0"
NOTES:
1. REFER TO ARCHITECTURAL DRAWINGS FOR EXACT STOOP LAYOUT AND LOCATIONS.
2. REFER TO TYPICAL FOUNDATION WALL DETAIL FOR INFORMATION NOT SHOWN.



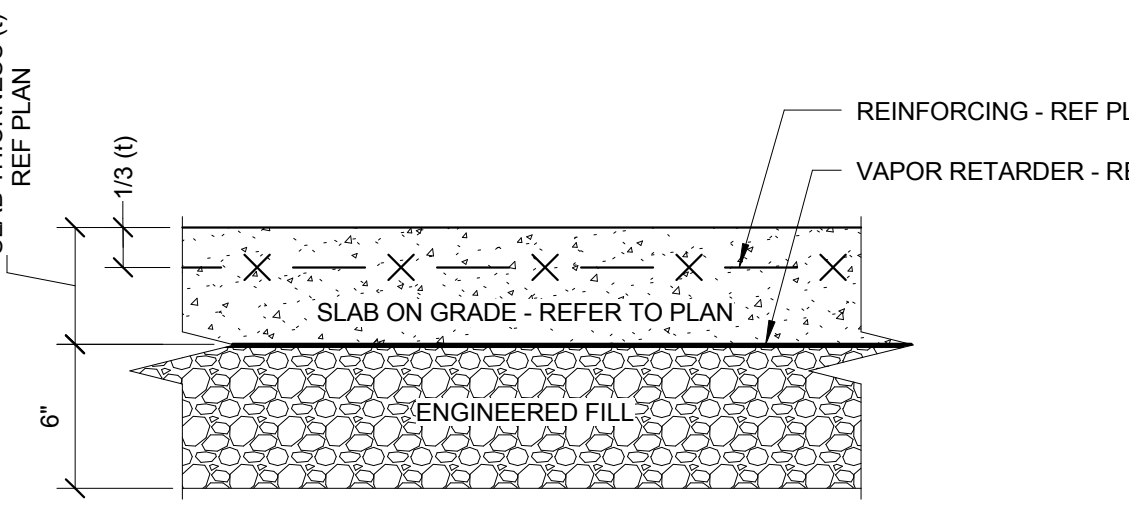
2 TYPICAL STOOP SECTION
3/4" = 1'-0"
NOTES:
1. REFER TO ARCHITECTURAL DRAWINGS FOR EXACT STOOP LAYOUT AND LOCATIONS.
2. REFER TO TYPICAL FOUNDATION WALL DETAIL FOR INFORMATION NOT SHOWN.



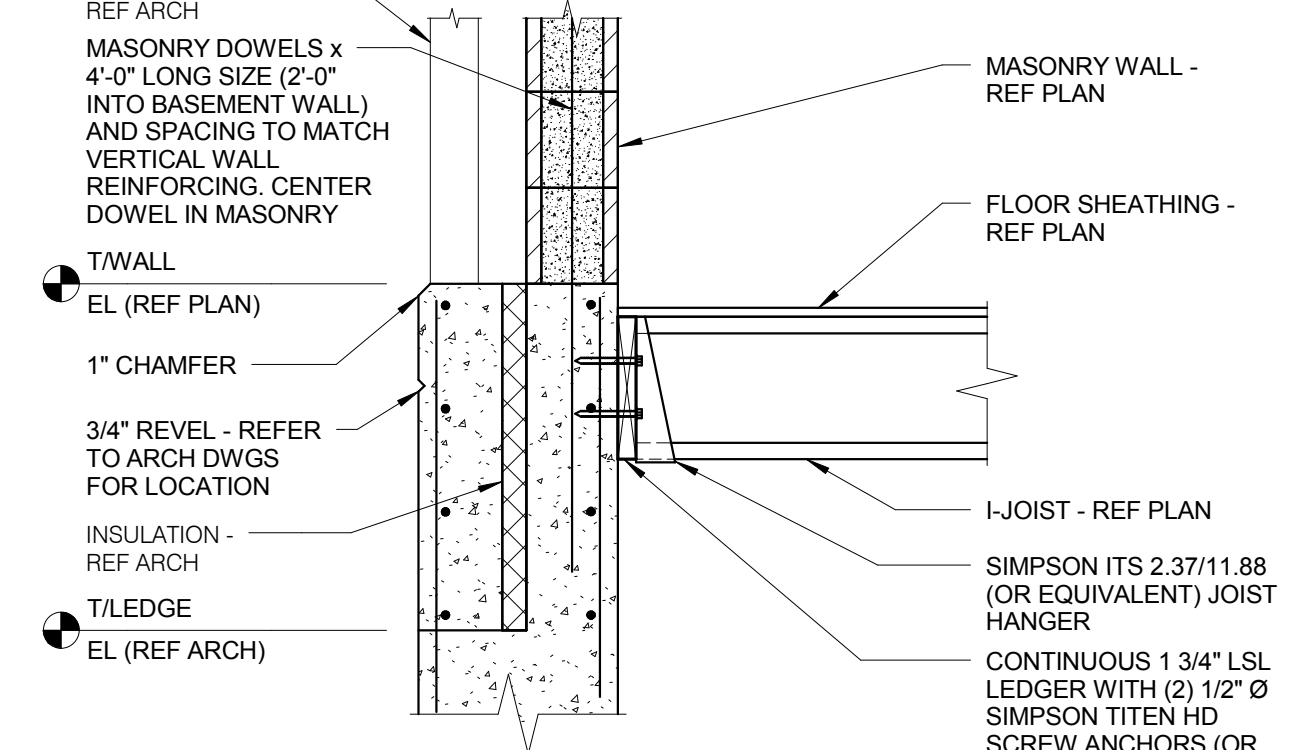
3 TYPICAL STAIR SECTION
1/2" = 1'-0"



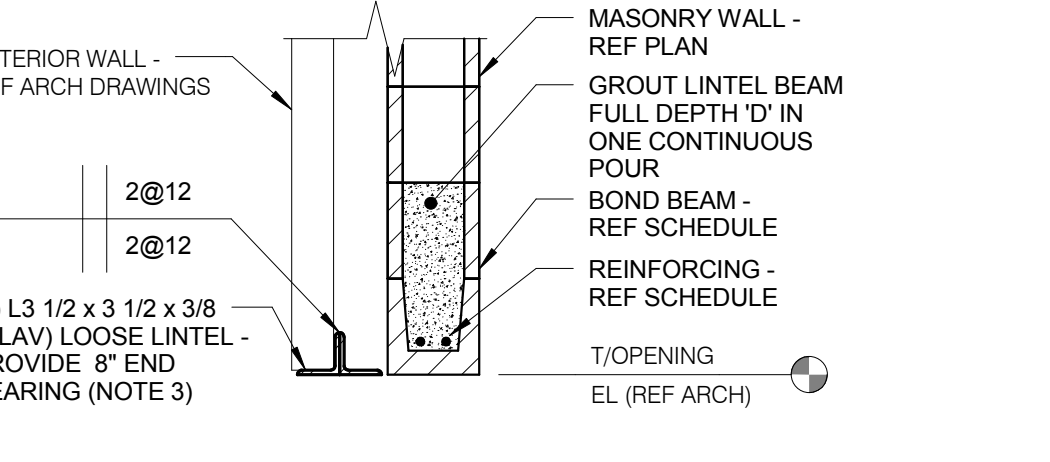
4 TYPICAL SLAB ON GRADE CONTROL JOINT
1" = 1'-0"



5 TYPICAL SLAB ON GRADE SECTION
1 1/2" = 1'-0"
NOTES:
1. ENGINEERED FILL SHALL BE NATURALLY OR ARTIFICIALLY GRADED MIXTURE OF NATURAL OR CRUSHED GRAVEL, CRUSHED STONE, NATURAL OR CRUSHED SAND. AGGREGATE SHALL BE UNIFORMLY GRADED AND MEET C66 PER ASTM D2940.

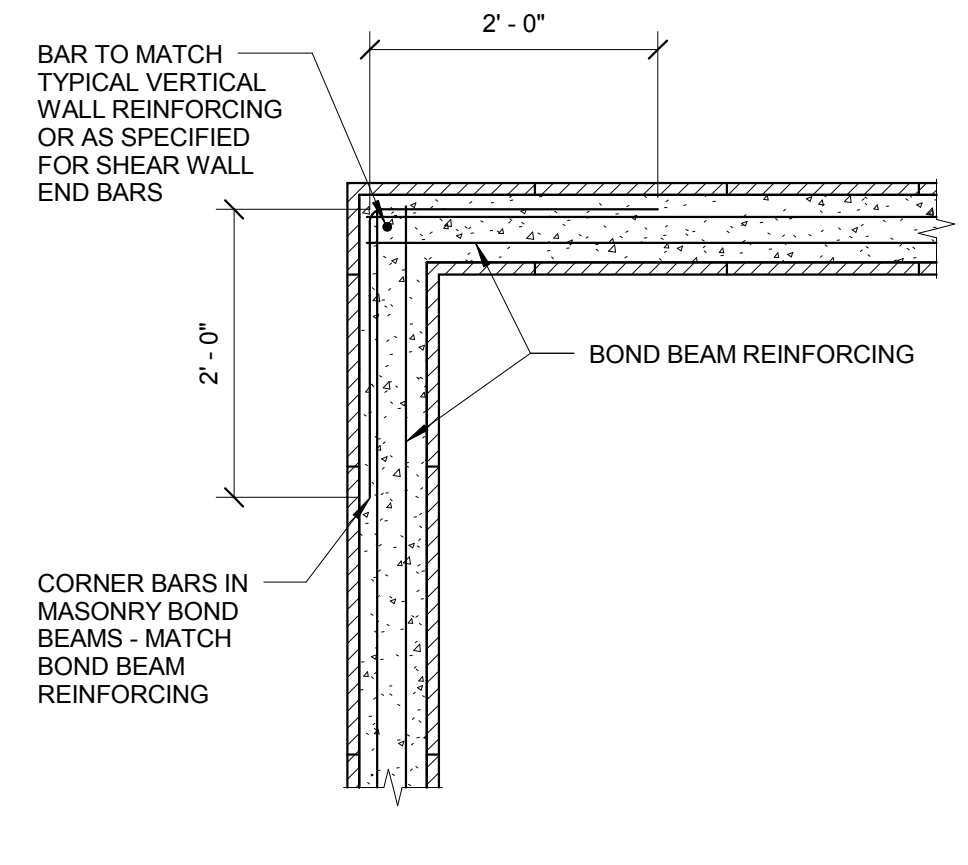


6 WALL DETAIL
3/4" = 1'-0"
NOTES:
1. VERTICAL REBAR IS TO BE CONTINUOUS INTO SECONDARY CONCRETE POUR.

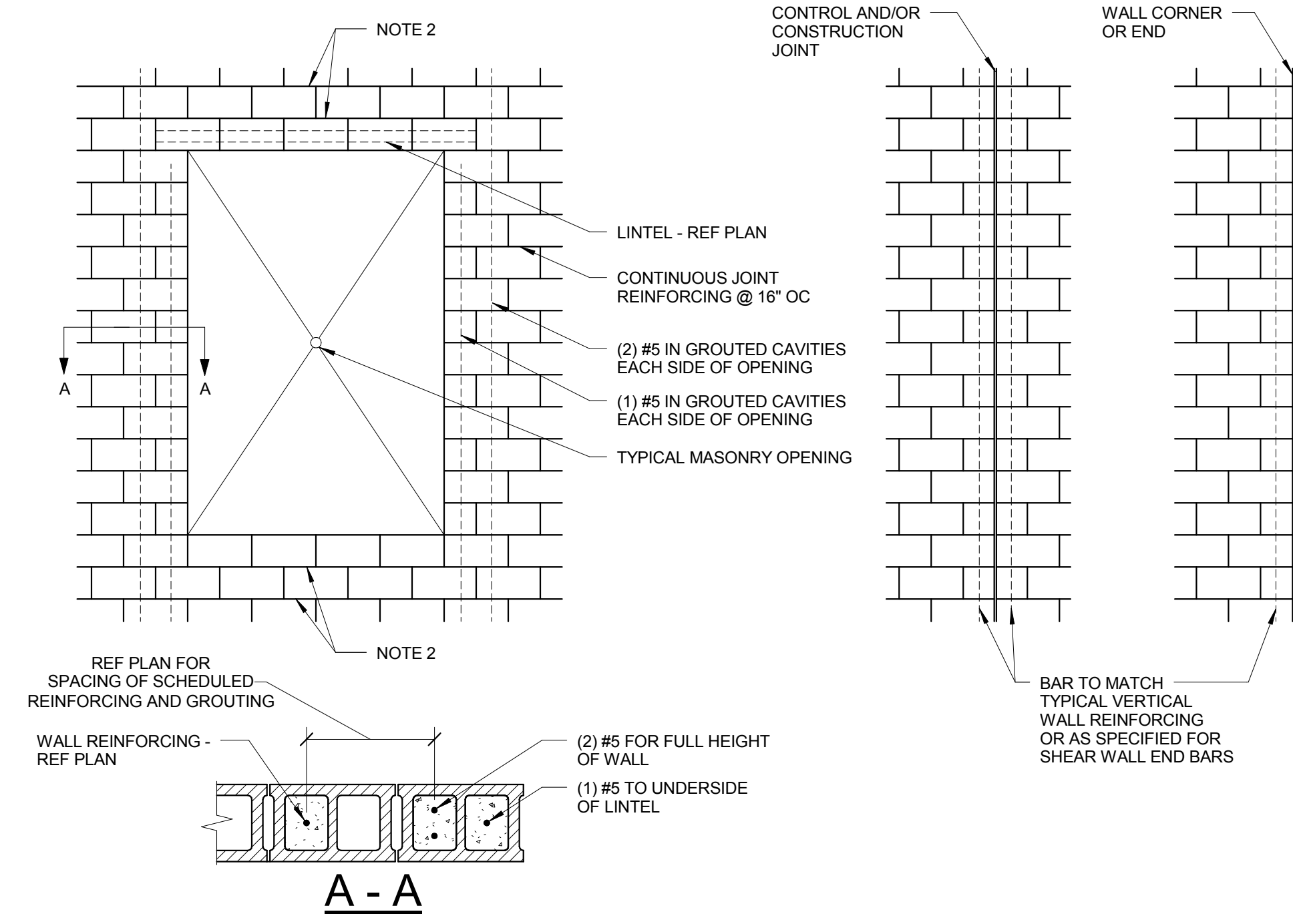


7 LINTEL DETAIL
3/4" = 1'-0"
NOTES:
1. REFERENCE ARCHITECTURAL DRAWINGS FOR INSULATION, THROUGH-WALL FLASHING, AND WEEP HOLES.
2. SHORE MASONRY UNTIL GROUT FOR LINTEL HAS REACHED ITS SPECIFIED STRENGTH.
3. SINGLE LOOSE LINTEL AT L2 LINTEL.

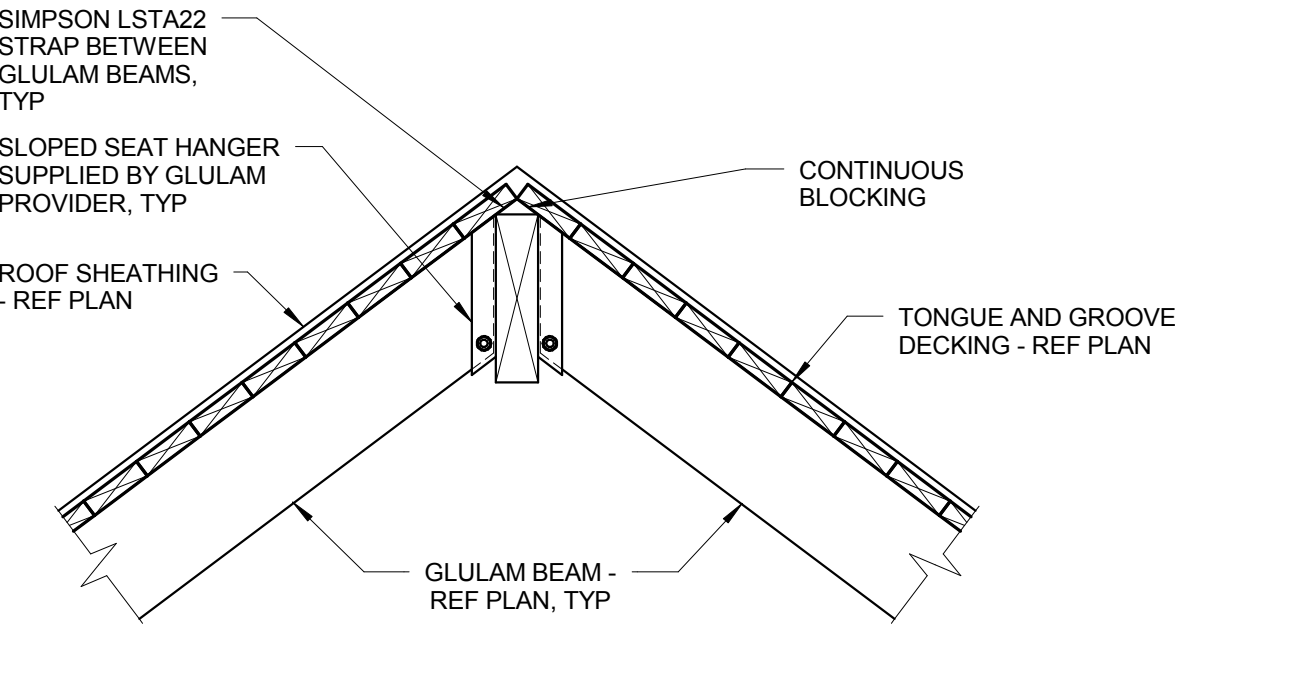
TYPE	DEPTH, D	REINFORCING
L1	8"	(2) #5
L2	16"	(2) #5



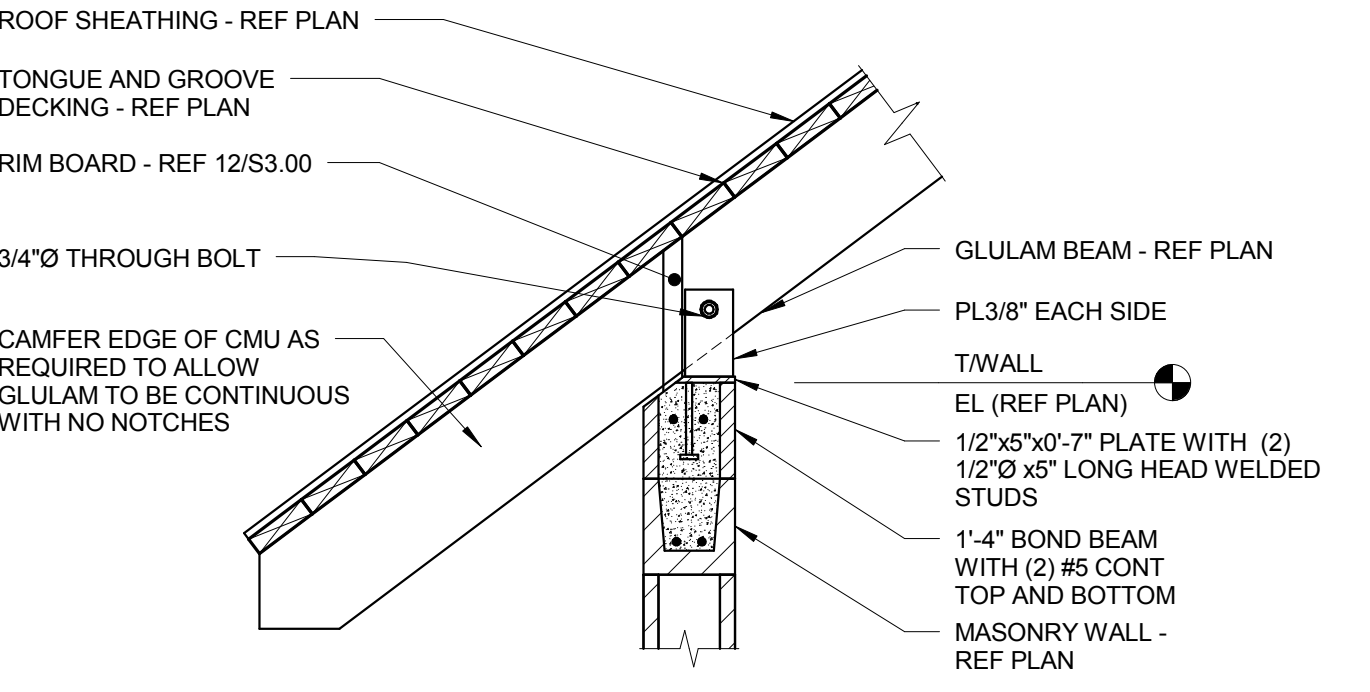
8 TYPICAL CMU WALL CORNER REINFORCING
3/4" = 1'-0"
NOTES:
1. TYPICAL VERTICAL WALL REINFORCING NOT SHOWN FOR CLARITY.



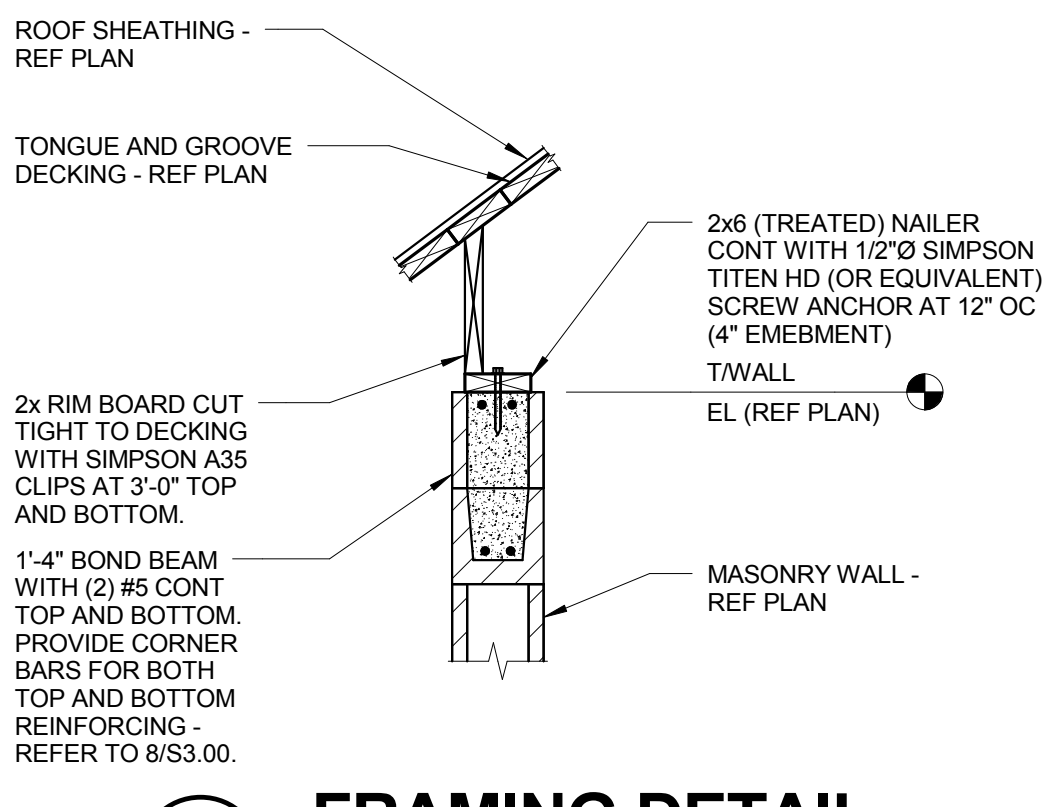
9 TYPICAL MASONRY WALL DETAIL
3/8" = 3'-0"
NOTES:
1. REFER PLAN FOR CONCRETE MASONRY CONTROL JOINT LOCATIONS AND ARCHITECTURAL FOR VENEER CONTROL JOINT LOCATIONS.
2. TWO COURSES OF JOINT REINFORCING ARE REQUIRED ABOVE THE LINTEL AND BELOW THE SILL AND SHALL EXTEND A MINIMUM OF 24 INCHES PAST THE OPENING.



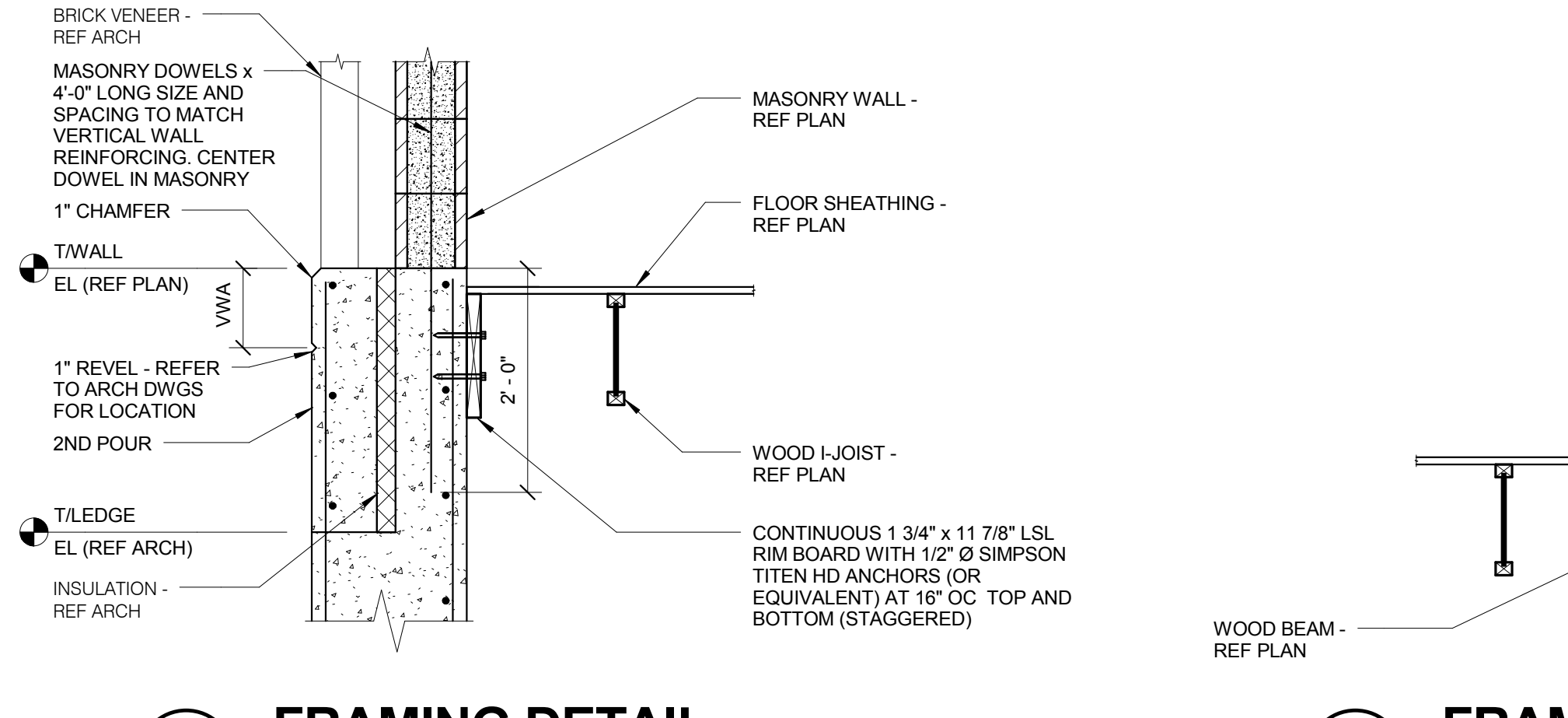
10 FRAMING DETAIL
3/4" = 1'-0"



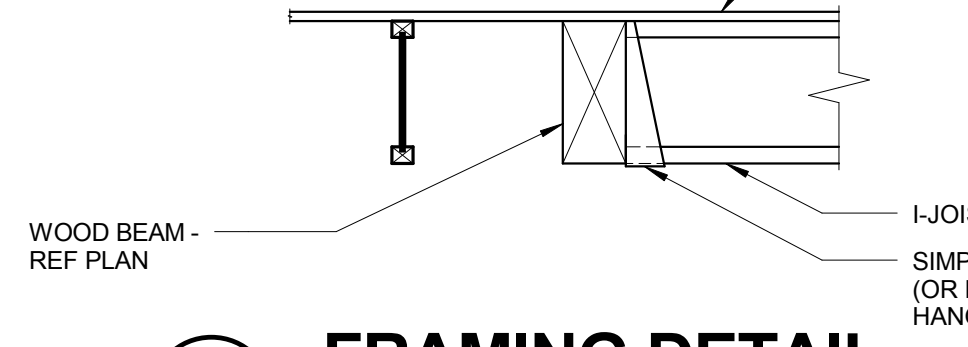
11 GLULAM BEARING AT CMU
3/4" = 1'-0"
NOTES:
1. CONNECTION PLATES SHOWN ARE CONCEPTUAL. GLULAM DESIGN IS TO FINALIZE CONNECTION TO EMBED PLATE SHOWN. DESIGN CONNECTION FOR BENDING AND AXIAL LOADS FROM GLULAM MEMBER.



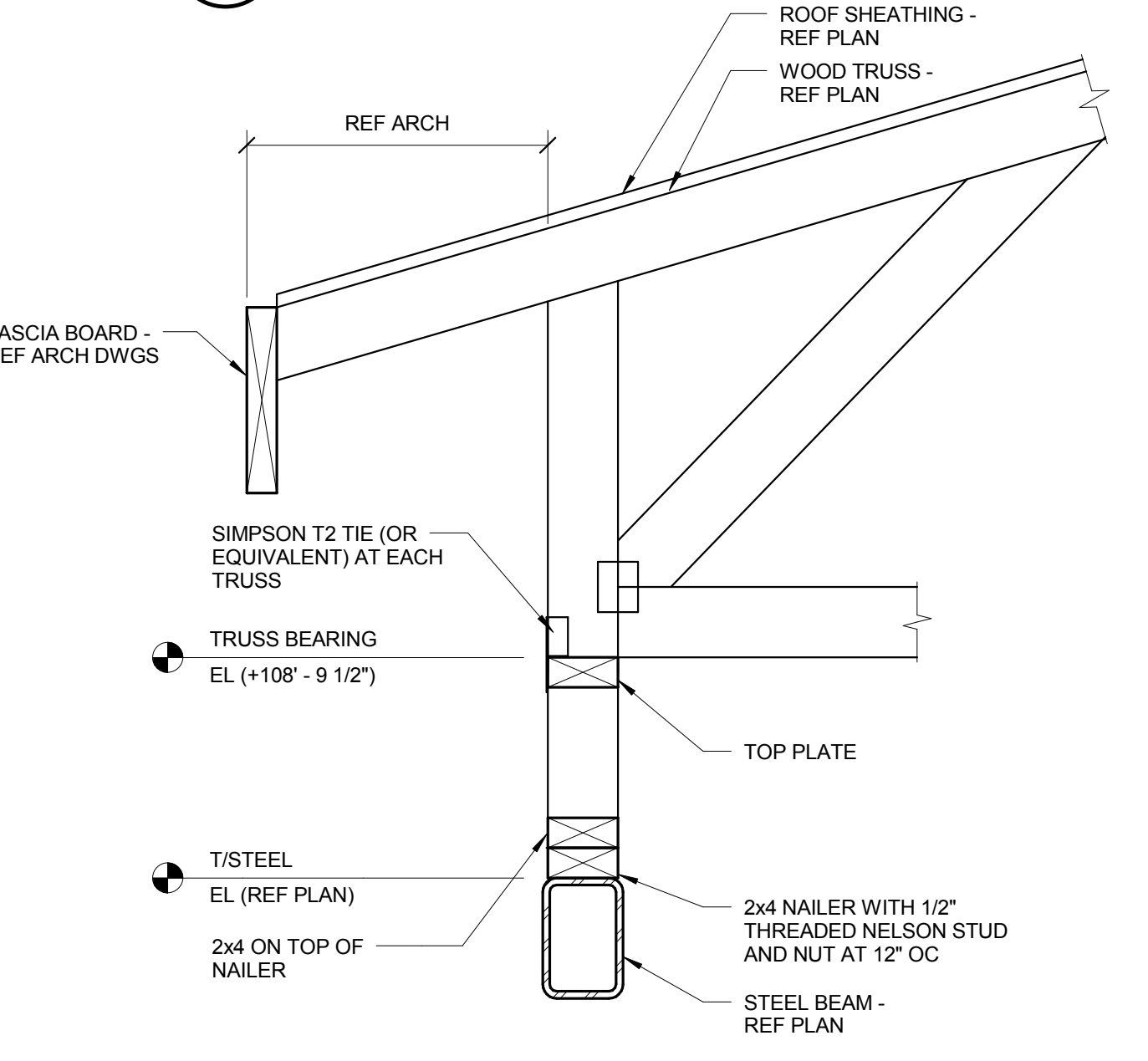
12 FRAMING DETAIL
3/4" = 1'-0"



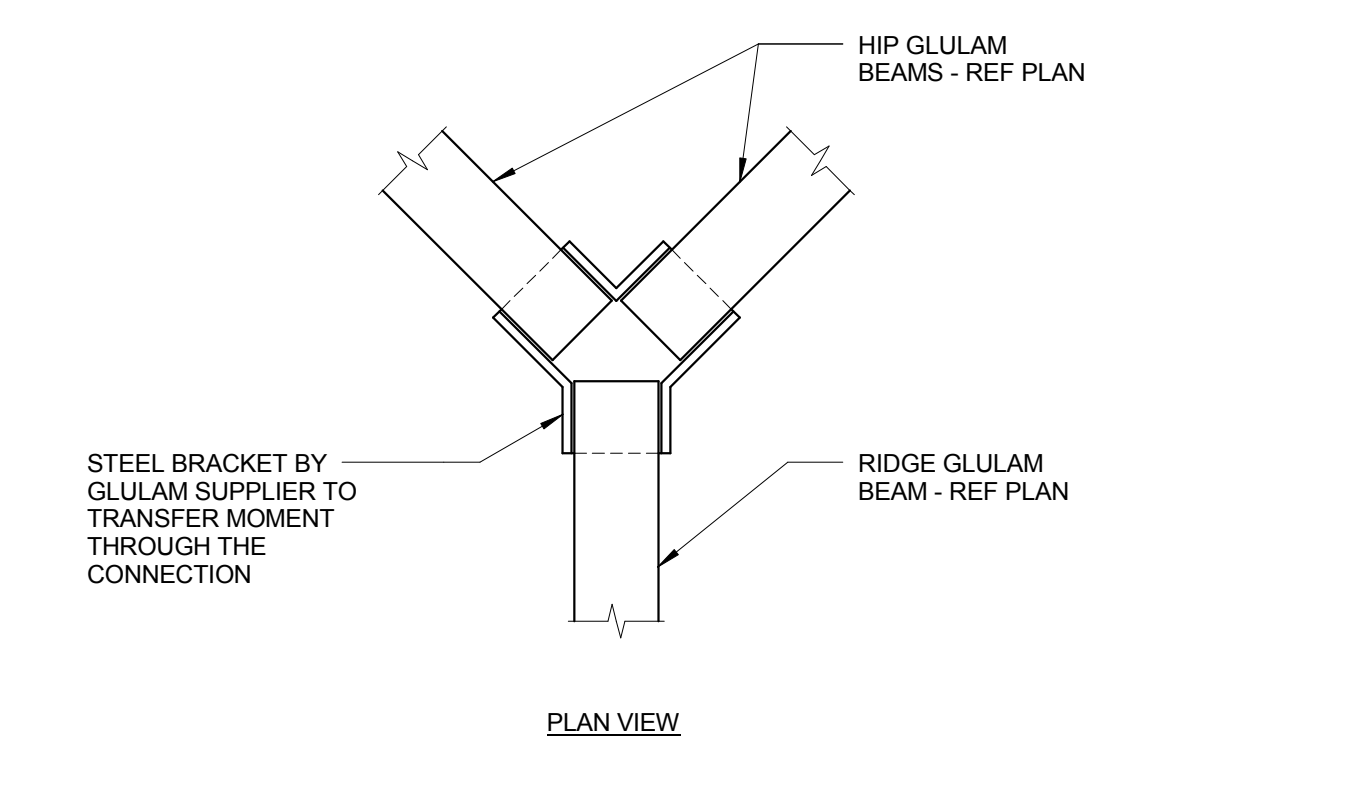
13 FRAMING DETAIL
3/4" = 1'-0"
NOTES:
1. VERTICAL REBAR IS TO BE CONTINUOUS INTO SECONDARY CONCRETE POUR.



14 FRAMING DETAIL
3/4" = 1'-0"



15 CONNECTION DETAIL
1 1/2" = 1'-0"



16 GLULAM CONNECTION DETAIL
1 1/2" = 1'-0"

BID SET DOCUMENTS

2/29/2016 8:38:33 AM C:\Revit Local Files\14_14_0941_00_Ft Leavenworth_CENTRAL_reinches\14

No.	Revisions	Date

CONSULTANTS:
ENGINEERING CONSULTANTS
 The FUTURE BUILT SMARTER®
 823 26TH AVENUE
 5045 CITIES, IL 61201
 309.788.0673
 FAX: 309.788.0967
STRUCTURAL | MECHANICAL | ELECTRICAL TECHNOLOGY | MEDICAL EQUIPMENT SOLUTIONS

I HEREBY CERTIFY THAT THIS PLAN, SPECIFICATION OR REPORT WAS PREPARED BY ME OR UNDER MY DIRECT SUPERVISION, AND THAT I AM A DULY LICENSED PROFESSIONAL ENGINEER UNDER THE LAWS OF THE STATE OF ILLINOIS.
 PRINT NAME: DAN J. HUNTINGTON
 SIGNATURE: [Signature]
 DATE: 02-29-16
 LICENSE #: 101489

ARCHITECT/ENGINEERS:

 ANDERSON ENGINEERING
 ENGINEERING • ARCHITECTURE • LAND SURVEYING
 ENVIRONMENTAL SERVICES • LANDSCAPE ARCHITECTURE
 AE PROJECT NO.: 13802
 Anderson Engineering of Minnesota, LLC
 13605 1st Avenue North
 Suite 100
 Plymouth, MN 55441
 763-412-4000 (o) 763-412-4090 (f)
 www.ae-mn.com

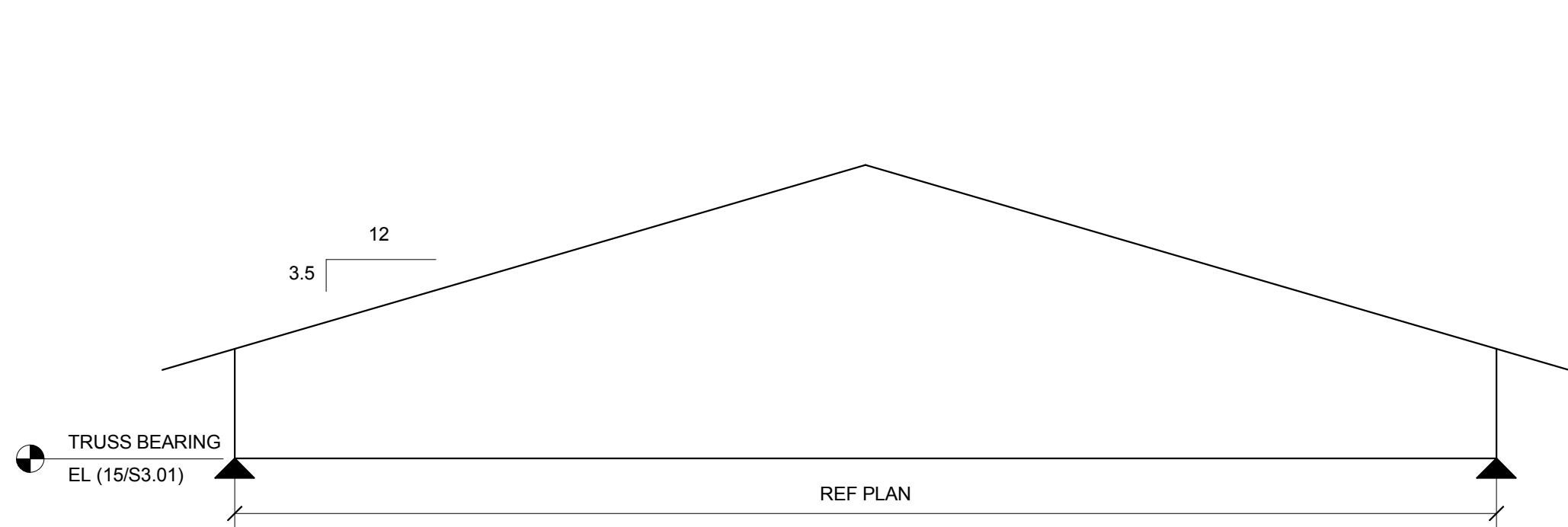
Drawing Title
STRUCTURAL DETAILS
 Approved: Project Director

Project Title
LODGE REHABILITATION
 Location
 FT LEAVENWORTH NATIONAL CEMETERY
 LEAVENWORTH, KS
 Date
 02-25-2016

Project Number
 887CM3005
 Building Number
 Drawing Number
S3.00
 Dwg. 39 of 67

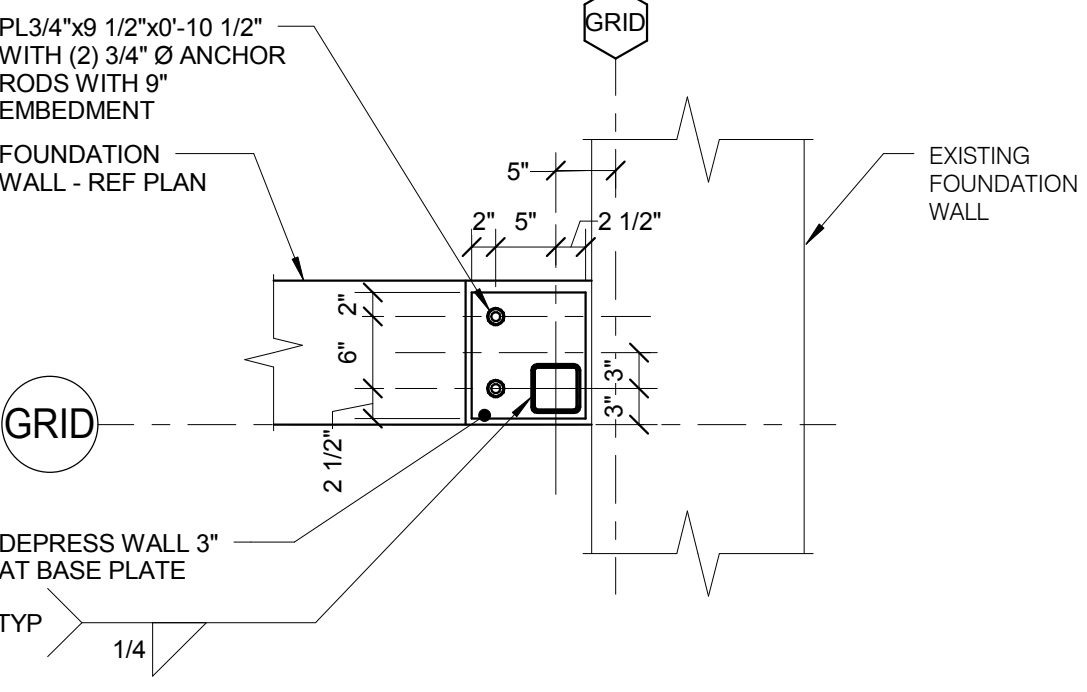
Office of Construction and Facilities Management

 U.S. Department of Veterans Affairs



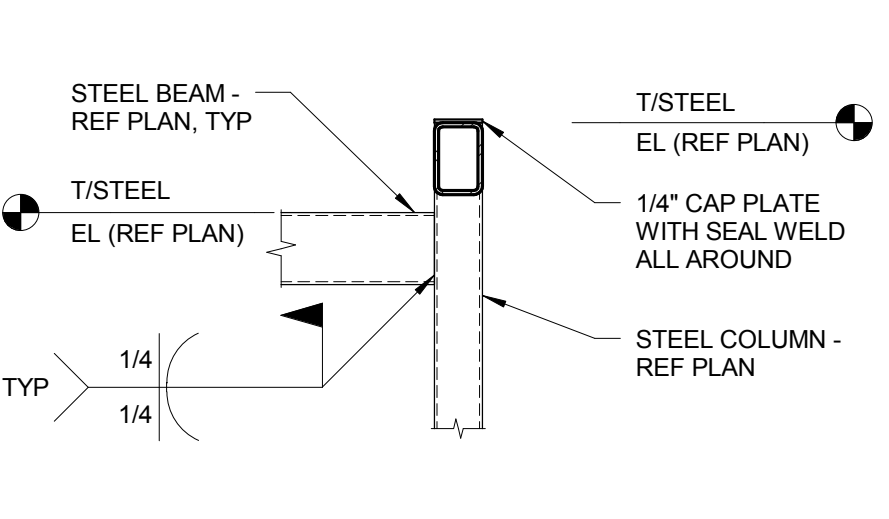
1 WOOD TRUSS DIAGRAM

3/4" = 1'-0"
 NOTES:
 1. TRUSS SUPPLIER TO DESIGN BEAMS FOR THE FOLLOWING LOADS:
 DL = 25 PSF + SELF WEIGHT
 SL = 40 PSF BALANCED PLUS UNBALANCED
 WL = REFER TO S0.00 FOR UPLIFT

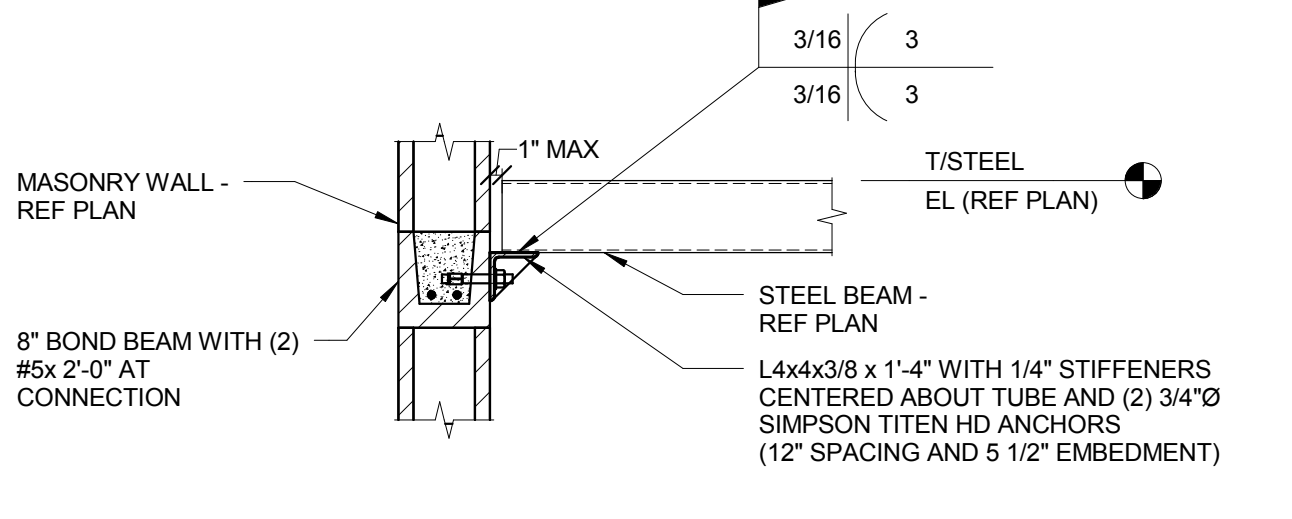


2 BASE PLATE DETAIL

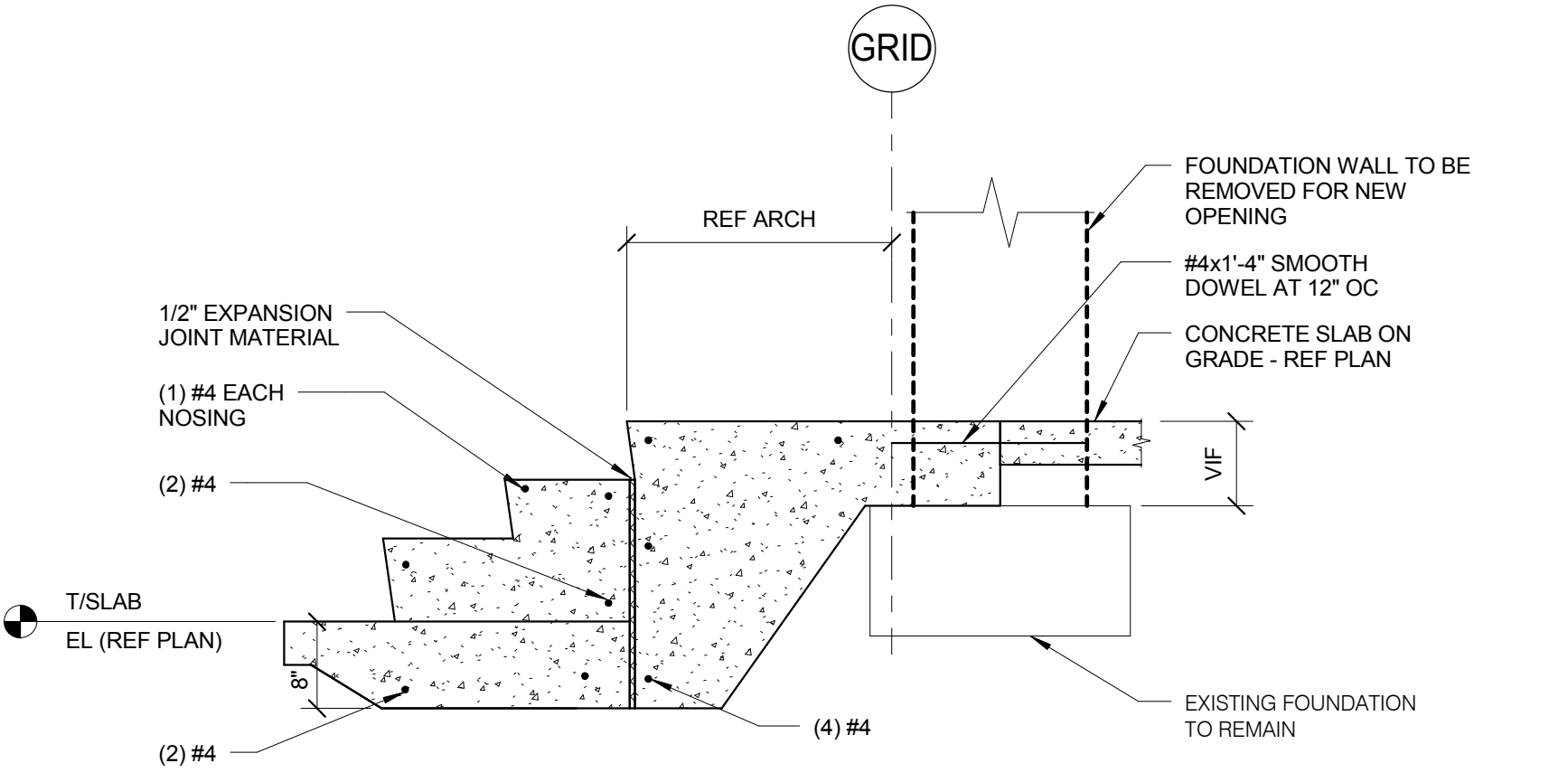
3/4" = 1'-0"
 NOTES:
 1. CUT ANCHORS DOWN TO TOP OF NUTS AND INFILL DEPRESSED AREA WITH SELF LEVELING CONCRETE.



3 CONNECTION DETAIL

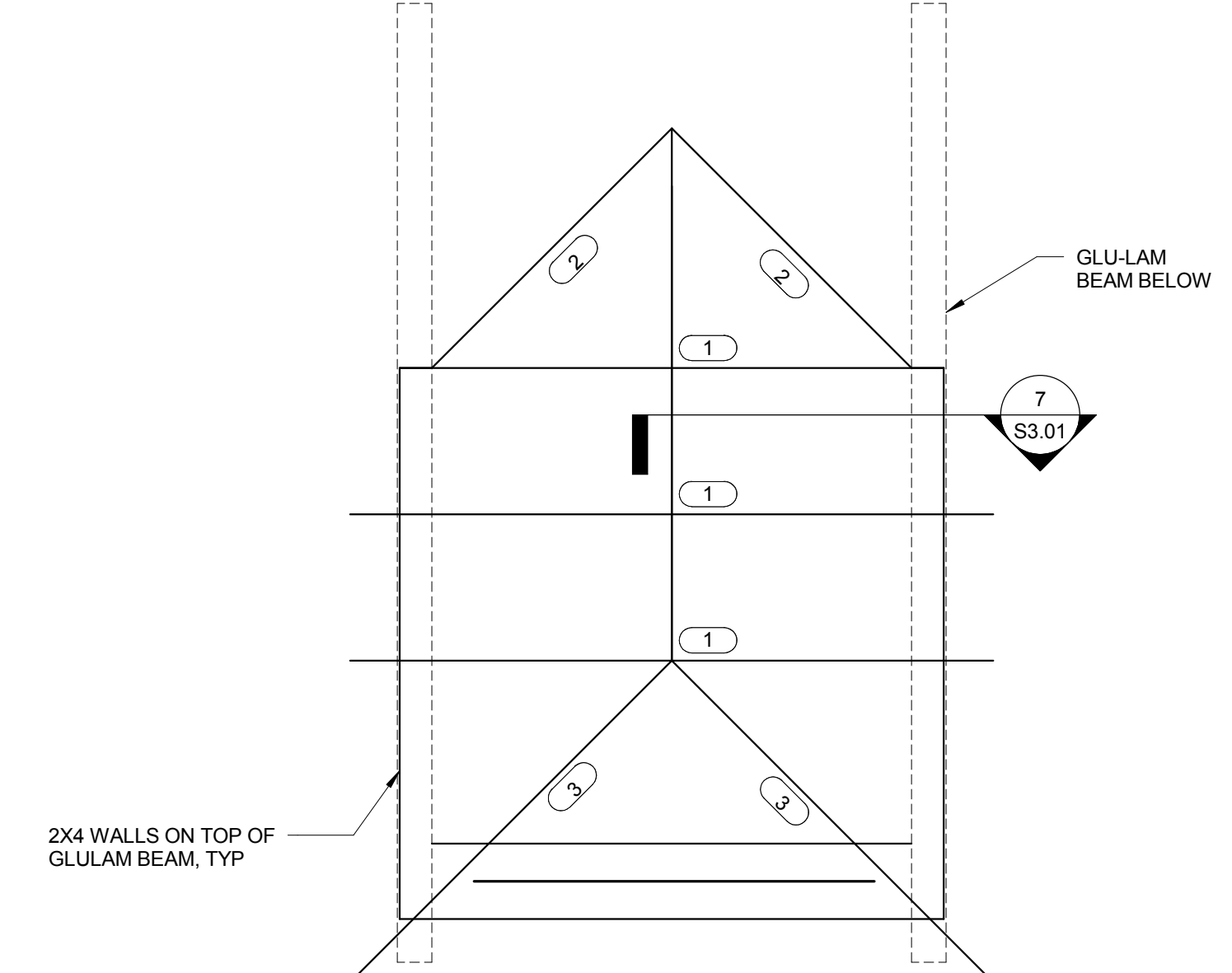


4 CONNECTION DETAIL



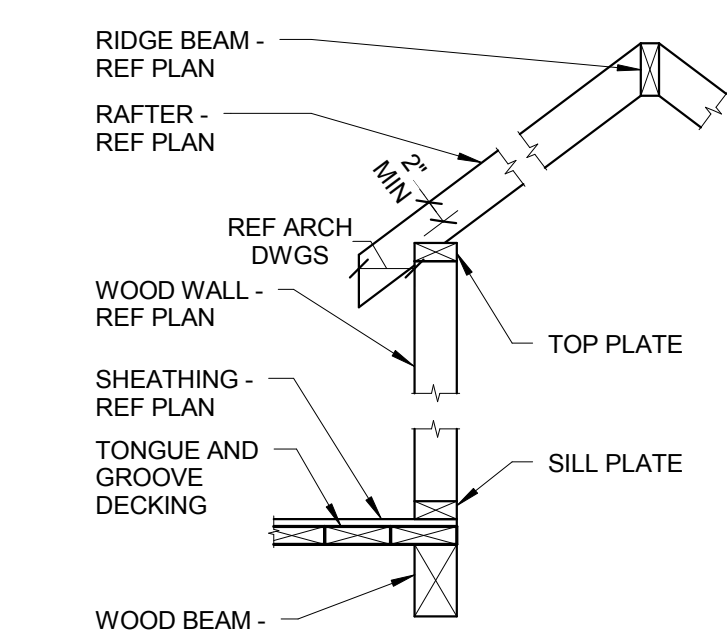
5 CONCRETE STAIR DETAIL

3/4" = 1'-0"
 NOTES:
 1. REFER TO ARCHITECTURAL DRAWINGS FOR MORE INFORMATION ON THE STAIRS AND DIMENSIONS.

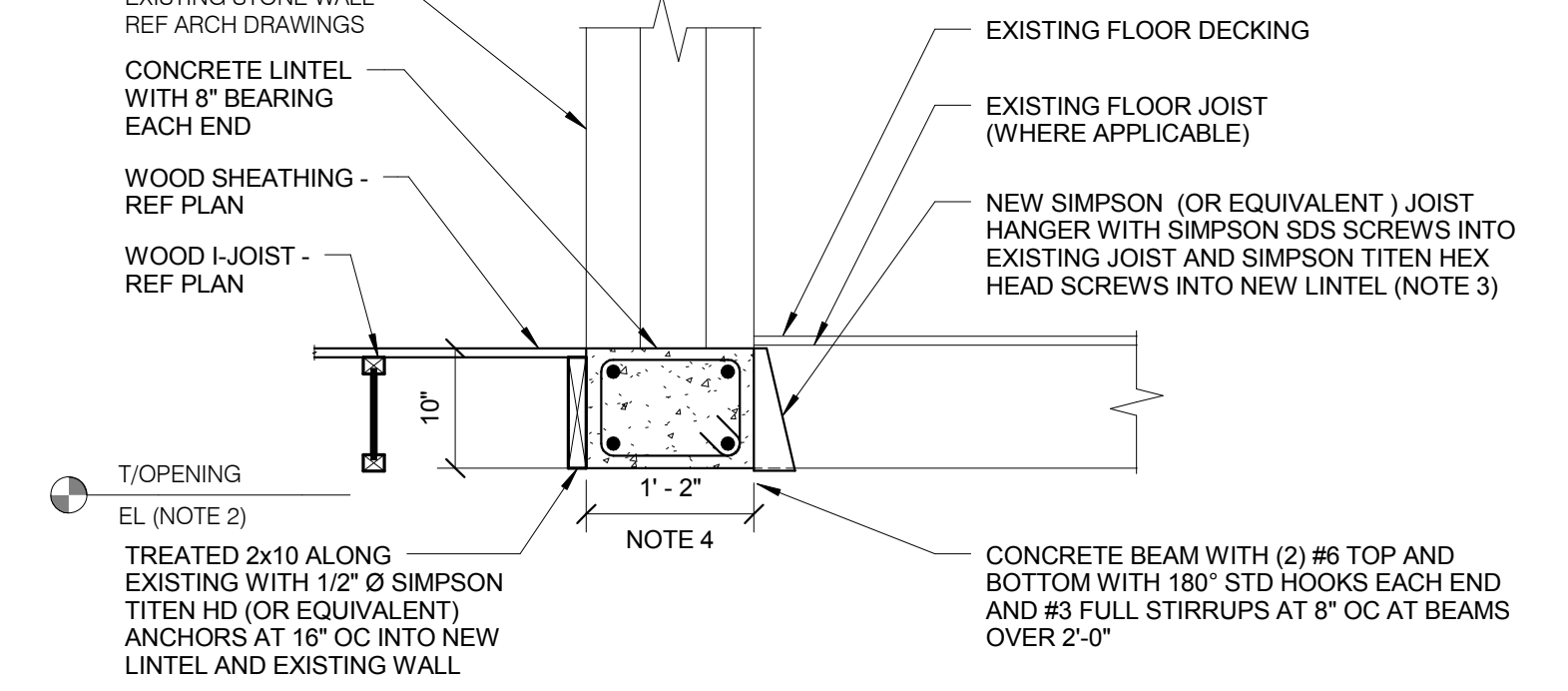


6 ENLARGED DORMER FRAMING PLAN

3/4" = 1'-0"
 KEYNOTES:
 1 WOOD TRUSS.
 2 2x4 TAPERED ON TONGUE AND GROOVE DECKING FOR SHEATHING ATTACHMENT.
 3 2x4 RAFTER.

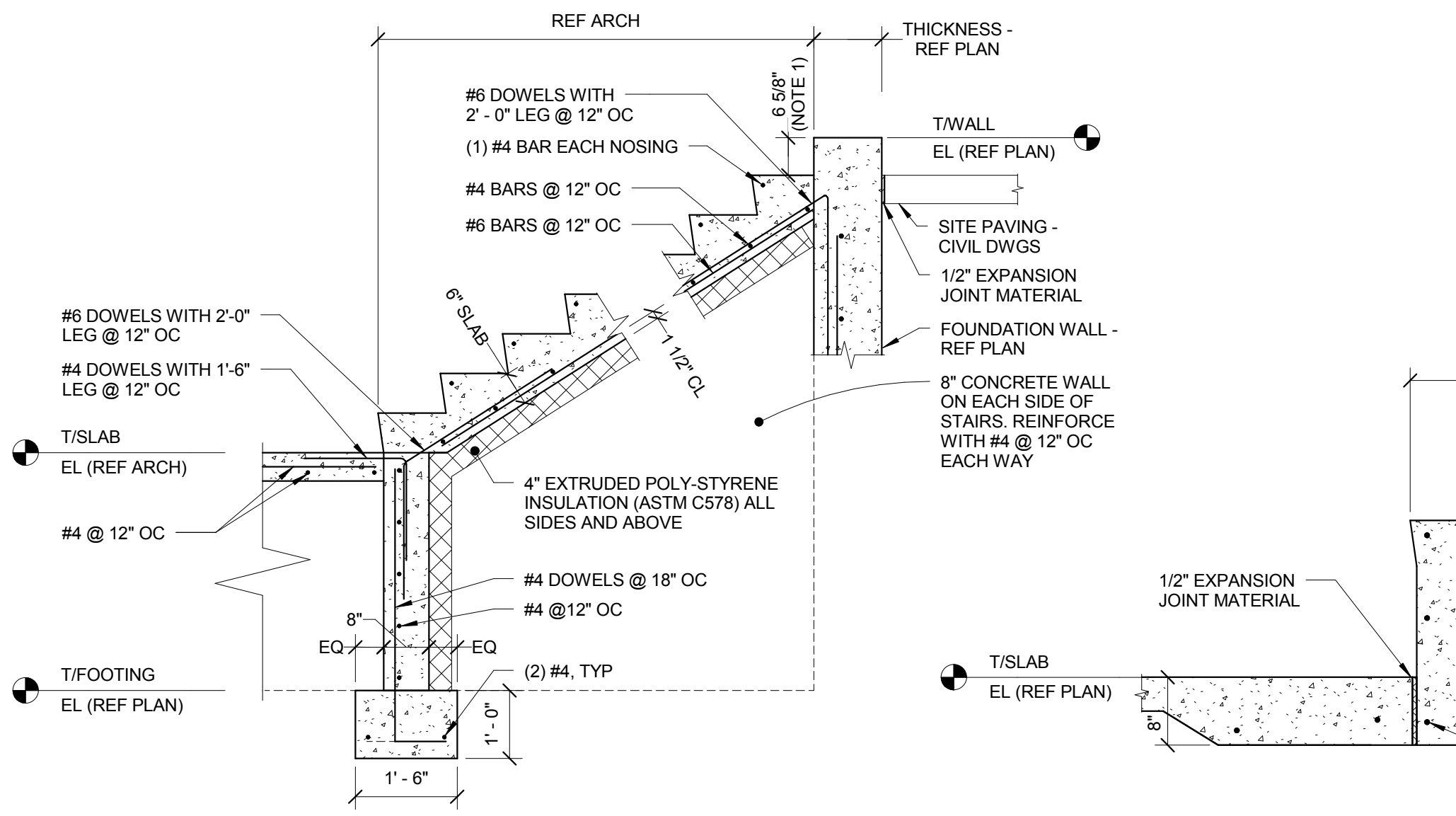


7 FRAMING DETAIL



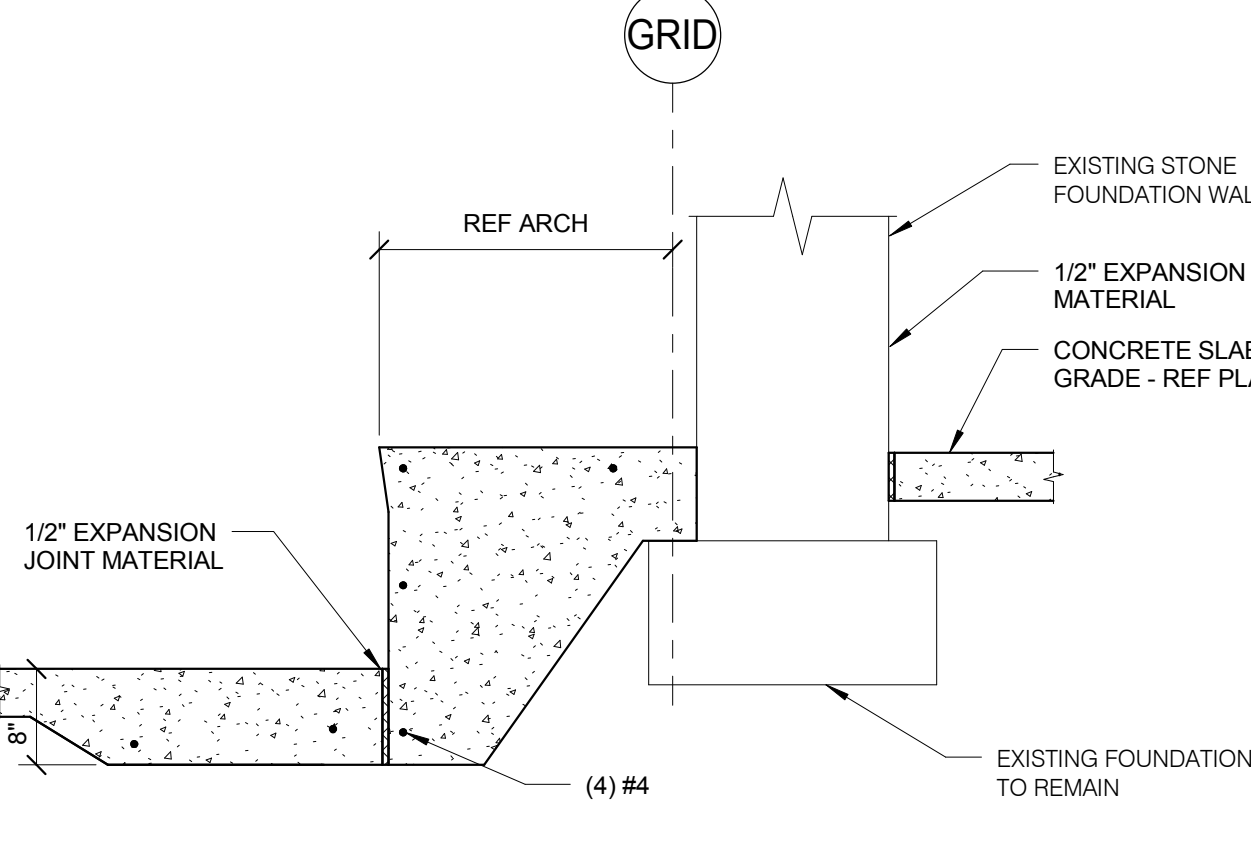
8 LINTEL DETAIL

3/4" = 1'-0"
 NOTES:
 1. SHORE EXISTING MASONRY WALL UNTIL NEW LINTEL IS IN PLACE.
 2. REFER TO ARCHITECTURAL AND MECHANICAL DRAWINGS FOR OPENING SIZE AND LOCATION.
 3. SHORE EXISTING FLOOR UNTIL NEW LINTEL AND HANGERS ARE IN PLACE.
 4. LINTEL SHALL MATCH EXISTING WALL WIDTH - VERIFY IN FIELD.

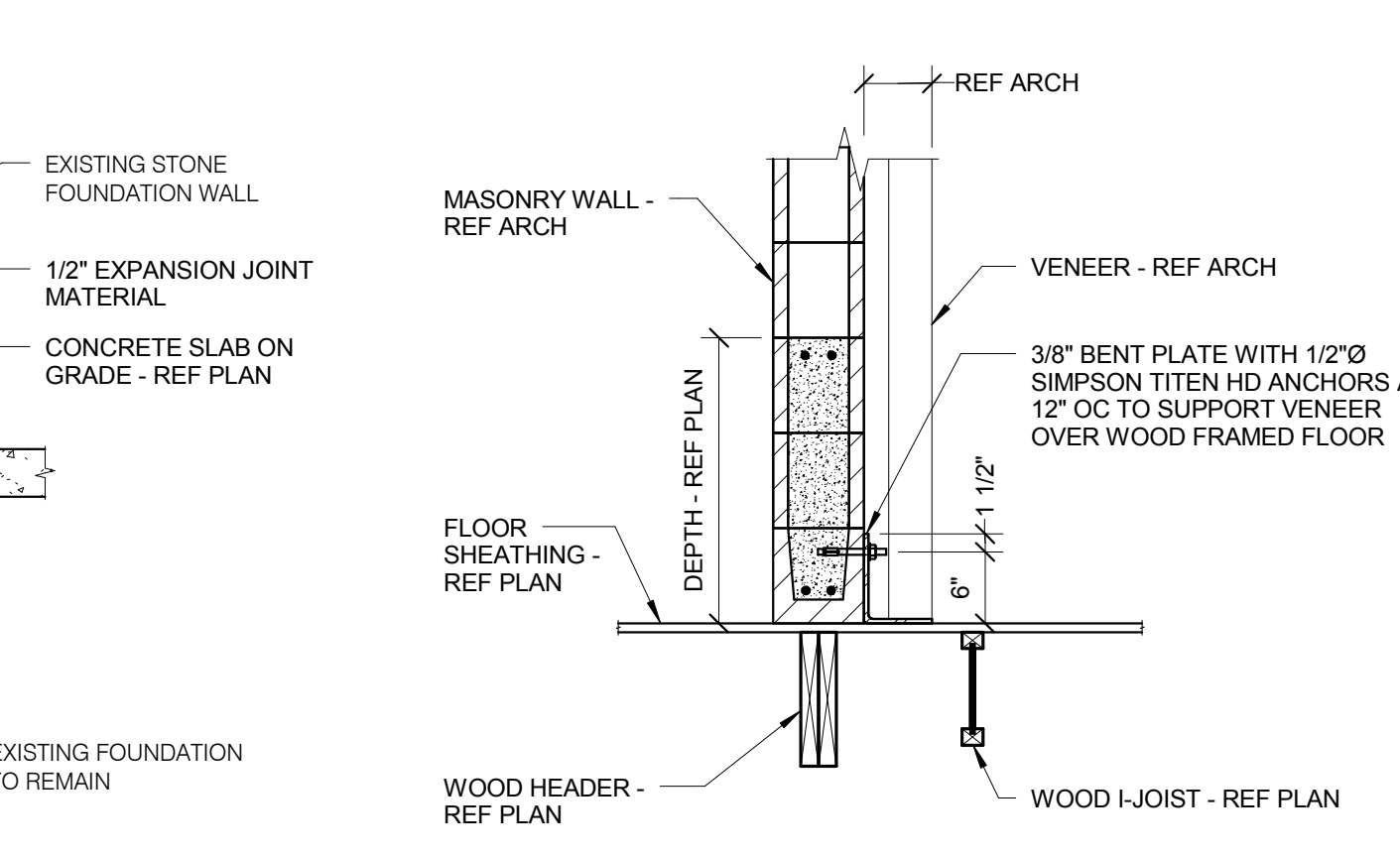


9 CELLAR STAIR SECTION

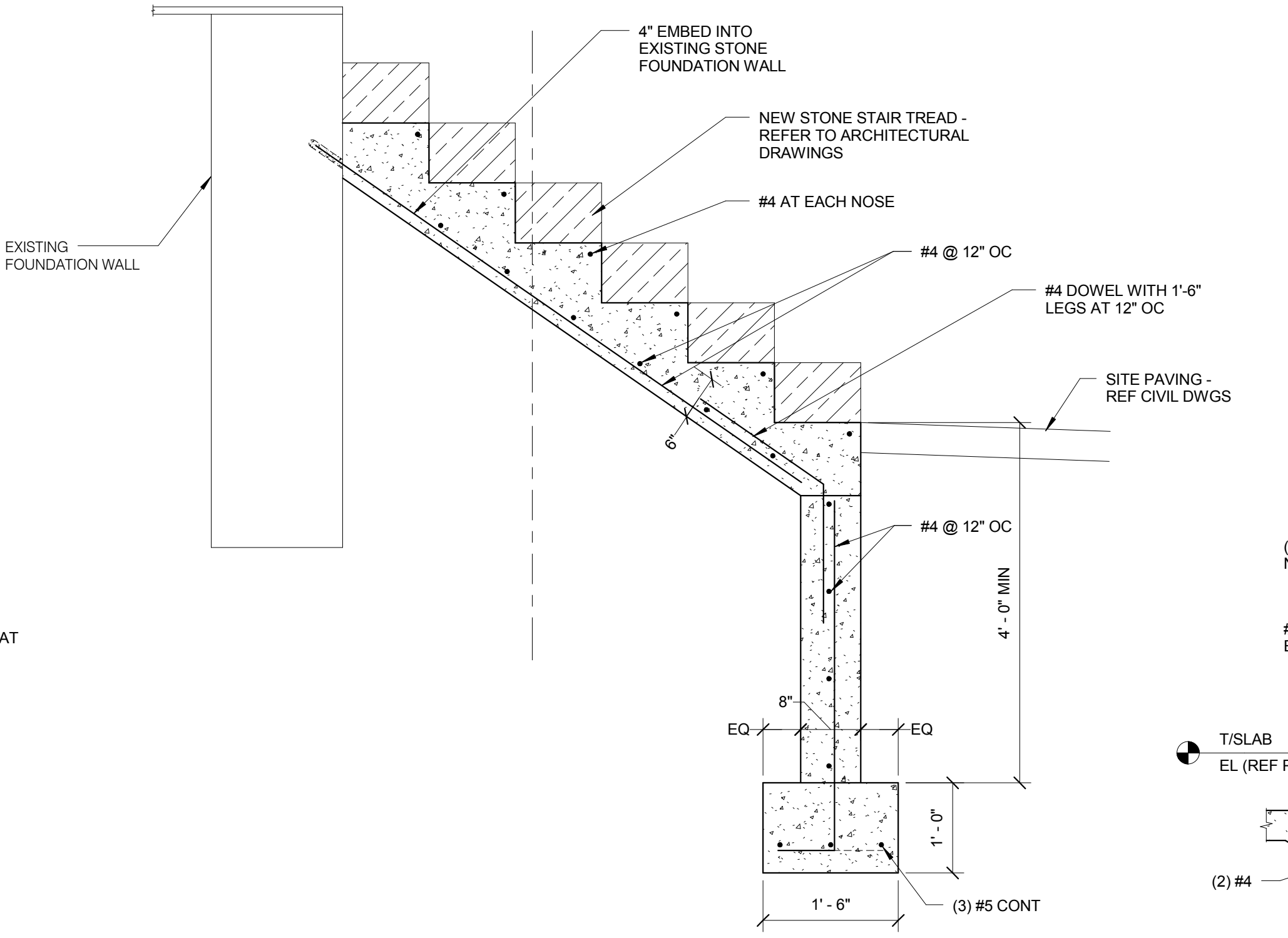
1/2" = 1'-0"
 NOTES:
 1. CONFIRM TOP OF TREAD AND CIVIL PAVING ELEVATION WITH ARCHITECTURAL AND CIVIL DRAWINGS.



10 STEP IN SLAB DETAIL

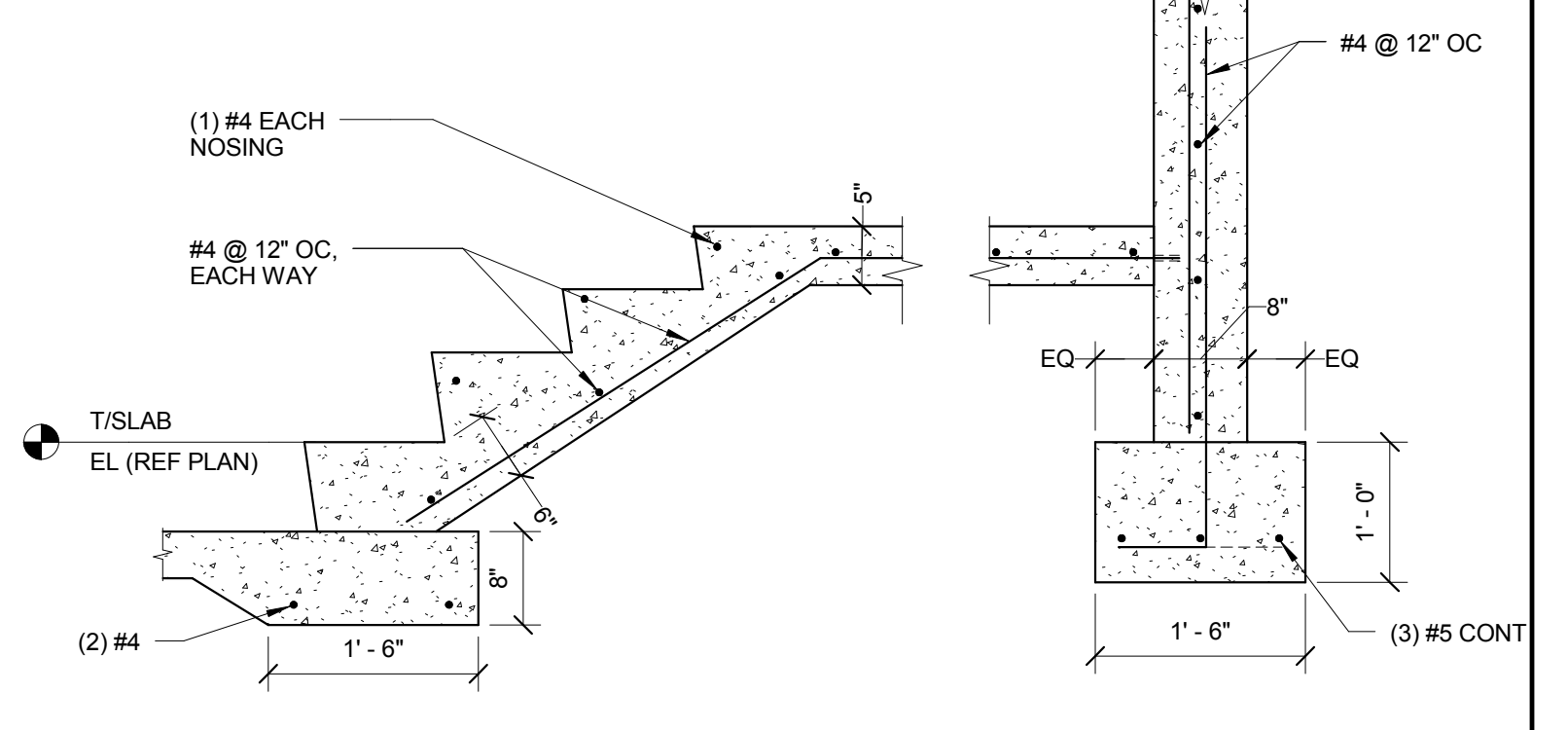


11 BRICK SUPPORT DETAIL



12 EXTERIOR STAIR FOUNDATION DETAIL

3/4" = 1'-0"
 NOTES:
 1. REFER TO THE ARCHITECTURAL DRAWINGS FOR MORE INFORMATION.



13 CONCRETE STAIR DETAIL

3/4" = 1'-0"
 NOTES:
 1. REFER TO ARCHITECTURAL DRAWINGS FOR MORE INFORMATION ON THE STAIRS AND DIMENSIONS.

C:\Revit Local Files\14_0941.00_FtLeavenworth_CENTRAL_reinschj.rvt 2/29/2016 8:38:34 AM

BID SET DOCUMENTS

No.	Revisions	Date

CONSULTANTS:

ENGINEERING CONSULTANTS
 The FUTURE Built SMARTER.
 833 26TH AVENUE
 QUAD C1705, IL, 61201
 309.788.0673
 FAX: 309.788.5967
 www.kjww.com
STRUCTURAL | MECHANICAL | ELECTRICAL TECHNOLOGY | MEDICAL EQUIPMENT SOLUTIONS

I HEREBY CERTIFY THAT THIS PLAN, SPECIFICATION OR REPORT WAS PREPARED BY ME OR UNDER MY DIRECT SUPERVISION AND THAT I AM A DULY LICENSED PROFESSIONAL ENGINEER UNDER THE LAWS OF THE STATE OF ILLINOIS.
 PRINT NAME: DAN J. HUNTINGTON
 SIGNATURE: [Signature]
 DATE: 02-26-16
 LICENSE #: 101489

ARCHITECT/ENGINEERS:

ANDERSON ENGINEERING
 ENGINEERING • ARCHITECTURE • LAND SURVEYING
 ENVIRONMENTAL SERVICES • LANDSCAPE ARCHITECTURE
 AE PROJECT NO.: 13802
 Anderson Engineering of Minnesota, LLC
 13605 1st Avenue North
 Suite 100
 Plymouth, MN 55441
 763-412-4000 (o) 763-412-4090 (f)
 www.ae-mn.com

Drawing Title	STRUCTURAL DETAILS
Approved: Project Director	

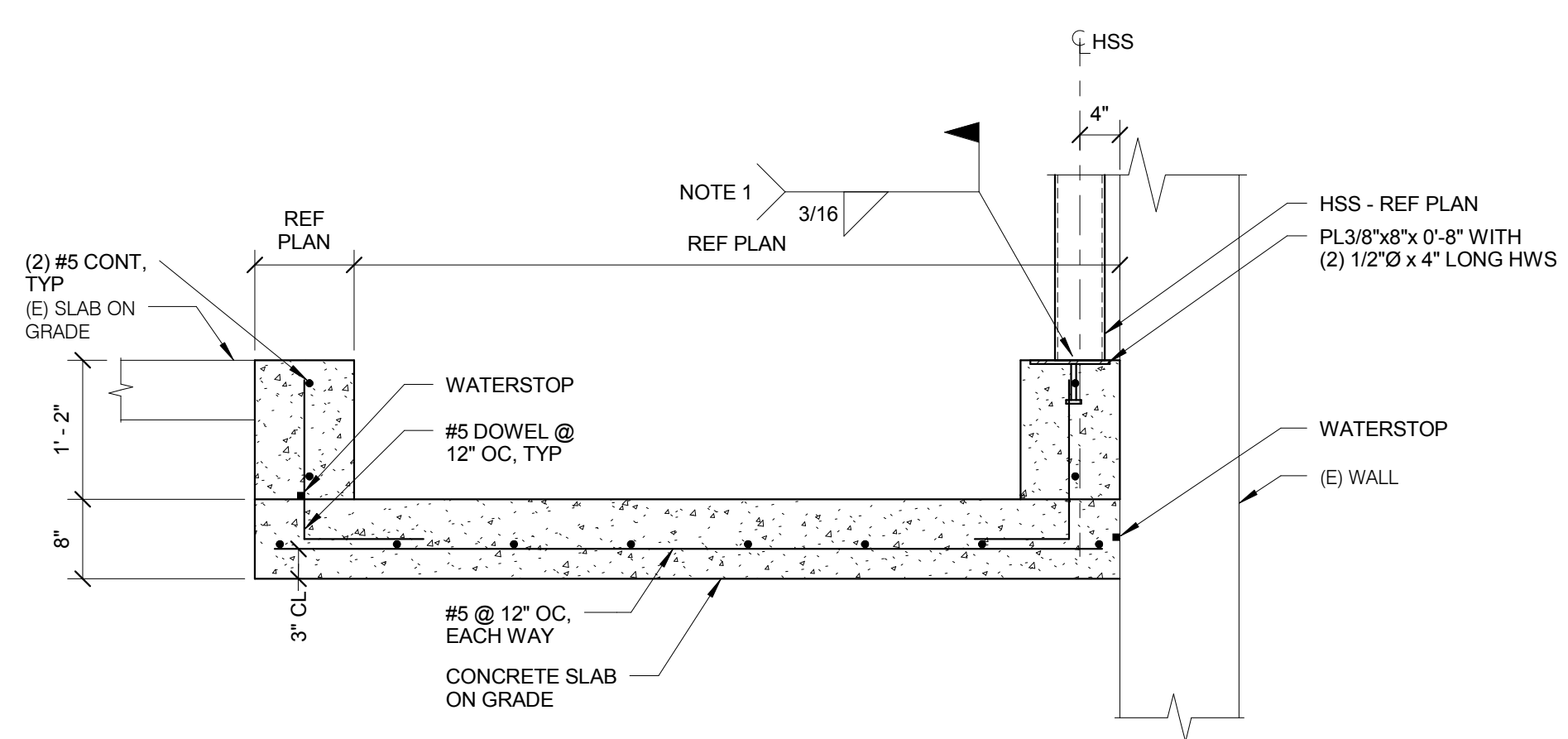
Project Title	LODGE REHABILITATION
Project Number	887CM3005
Building Number	
Location	FT LEAVENWORTH NATIONAL CEMETERY LEAVENWORTH, KS
Date	02-25-2016
Checked	TODBAR
Drawn	MATORT
Drawing Number	S3.01
Dwg. 40 of 67	

Office of Construction and Facilities Management

 U.S. Department of Veterans Affairs

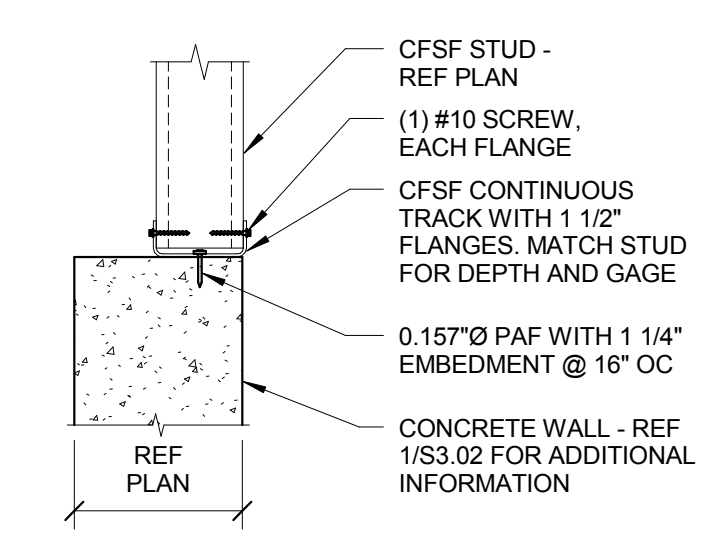
three inches one foot one and one half inches two inches two and one half inches three inches three and one half inches four inches four and one half inches five inches five and one half inches six inches six and one half inches seven inches seven and one half inches eight inches eight and one half inches nine inches nine and one half inches ten inches ten and one half inches eleven inches eleven and one half inches twelve inches twelve and one half inches thirteen inches thirteen and one half inches fourteen inches fourteen and one half inches fifteen inches fifteen and one half inches

A B C D E F



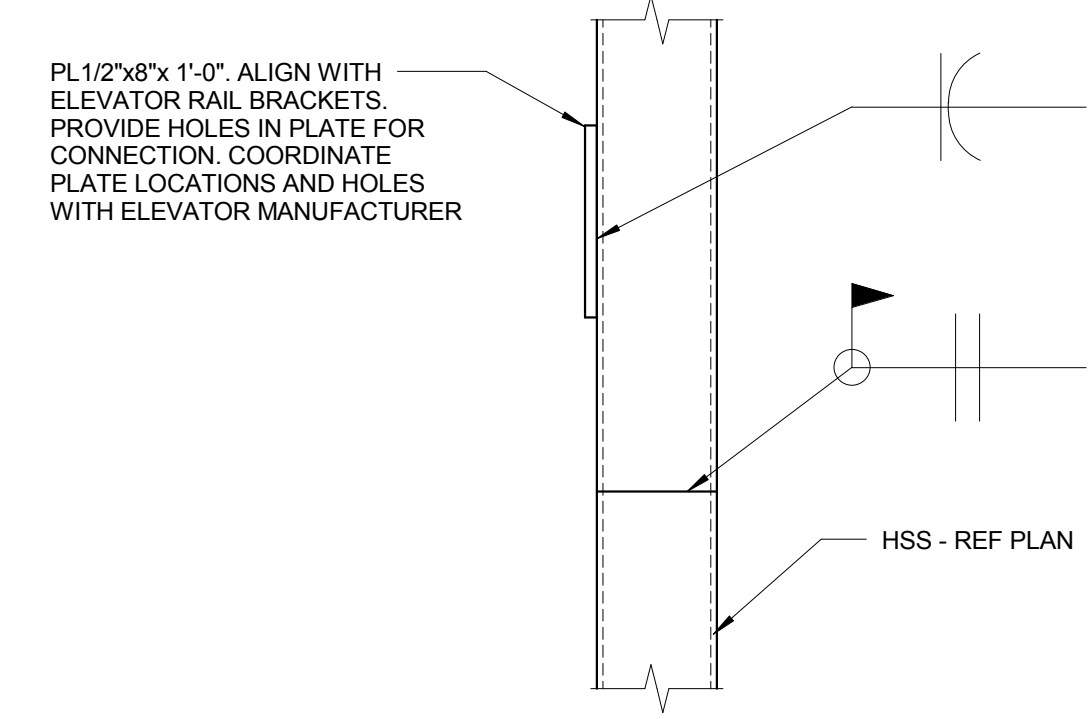
1 PIT DETAIL

3/4" = 1'-0"
 NOTES:
 1. SPLICE HSS PER 3/53.02 PRIOR TO WELDING AT BASE. WELD BASE ON 3 SIDES.



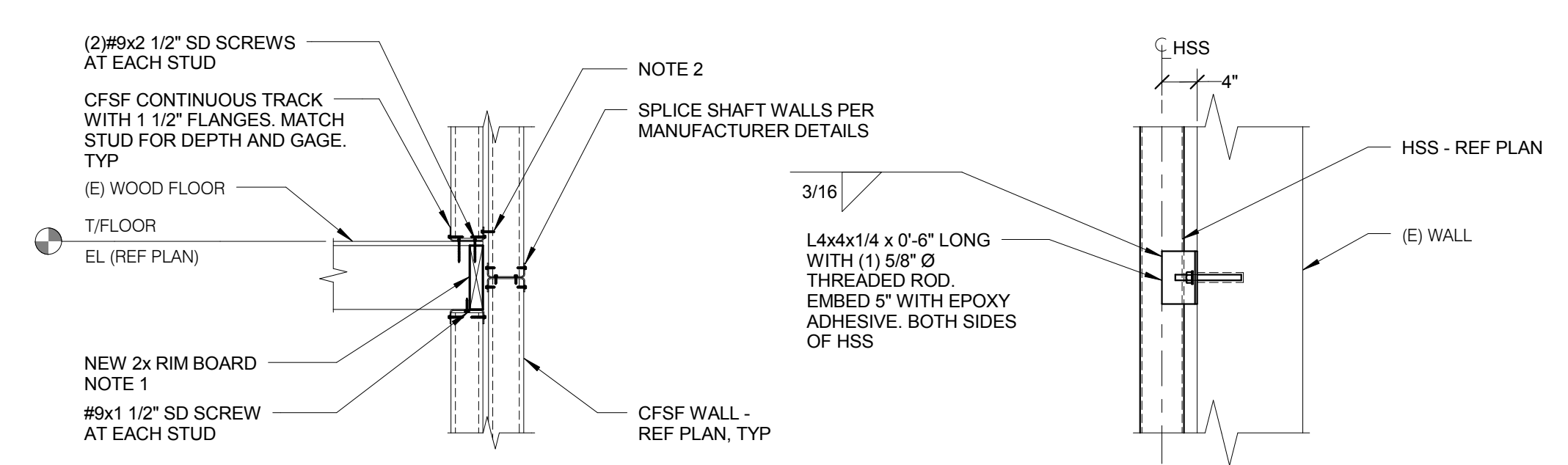
2 FOUNDATION DETAIL

1 1/2" = 1'-0"
 NOTES:
 1. FOR SHAFT WALLS, INSIDE FACE OF STUD ALIGNS WITH CONCRETE WALL.



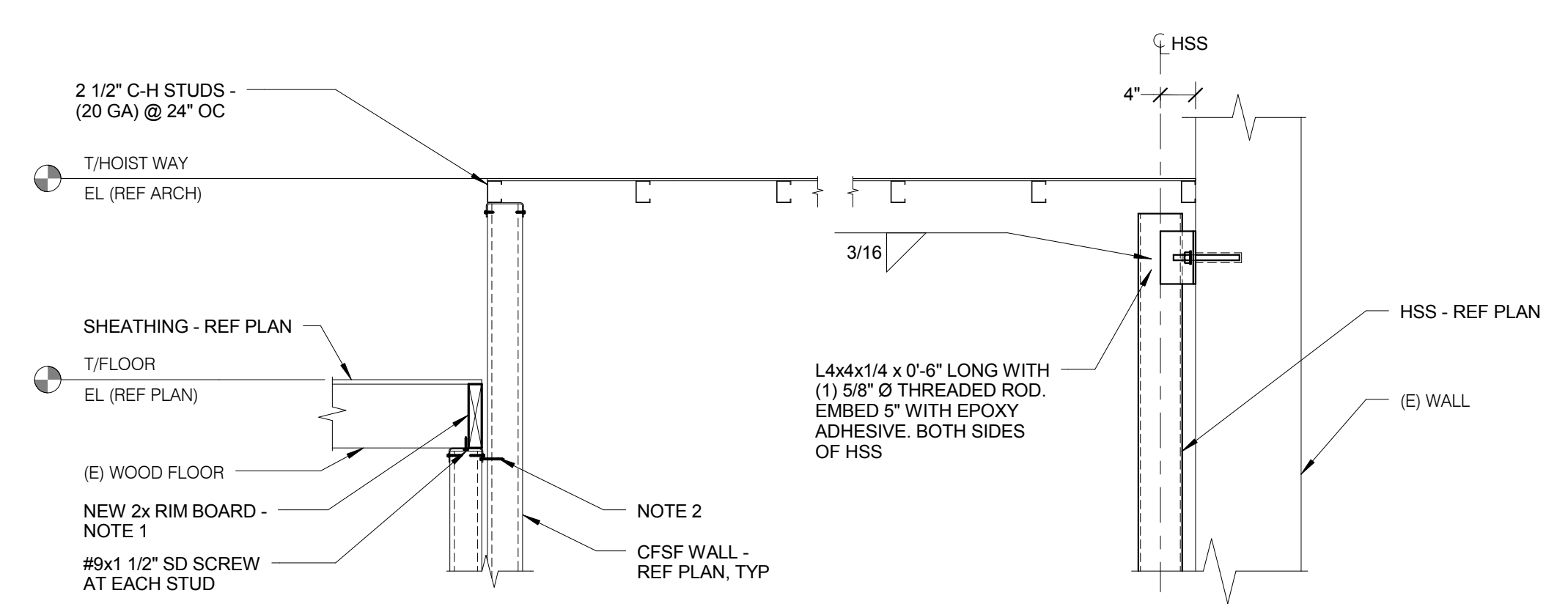
3 FRAMING DETAIL

1 1/2" = 1'-0"
 NOTES:
 1. HSS SPLICE IS AS NEEDED. INTENT IS NOT TO SPLICE AT EACH PLATE LOCATION.



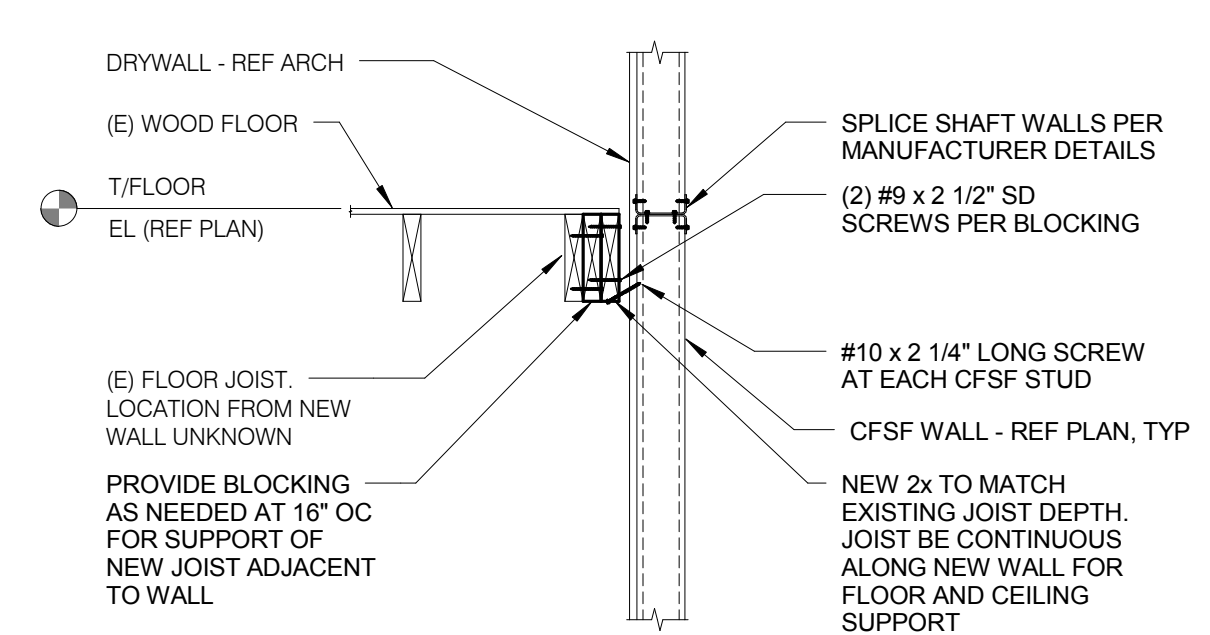
4 FRAMING DETAIL

3/4" = 1'-0"
 NOTES:
 1. EXTEND RIM BOARD TO CONTINUOUS JOIST ON EACH SIDE OF ELEVATOR AND CONNECT WITH TOE NAILS.
 2. CONNECT EACH SHAFT WALL STUD TO CFSF STUD OR TRACK WITH (1) #10 TEK SCREW.



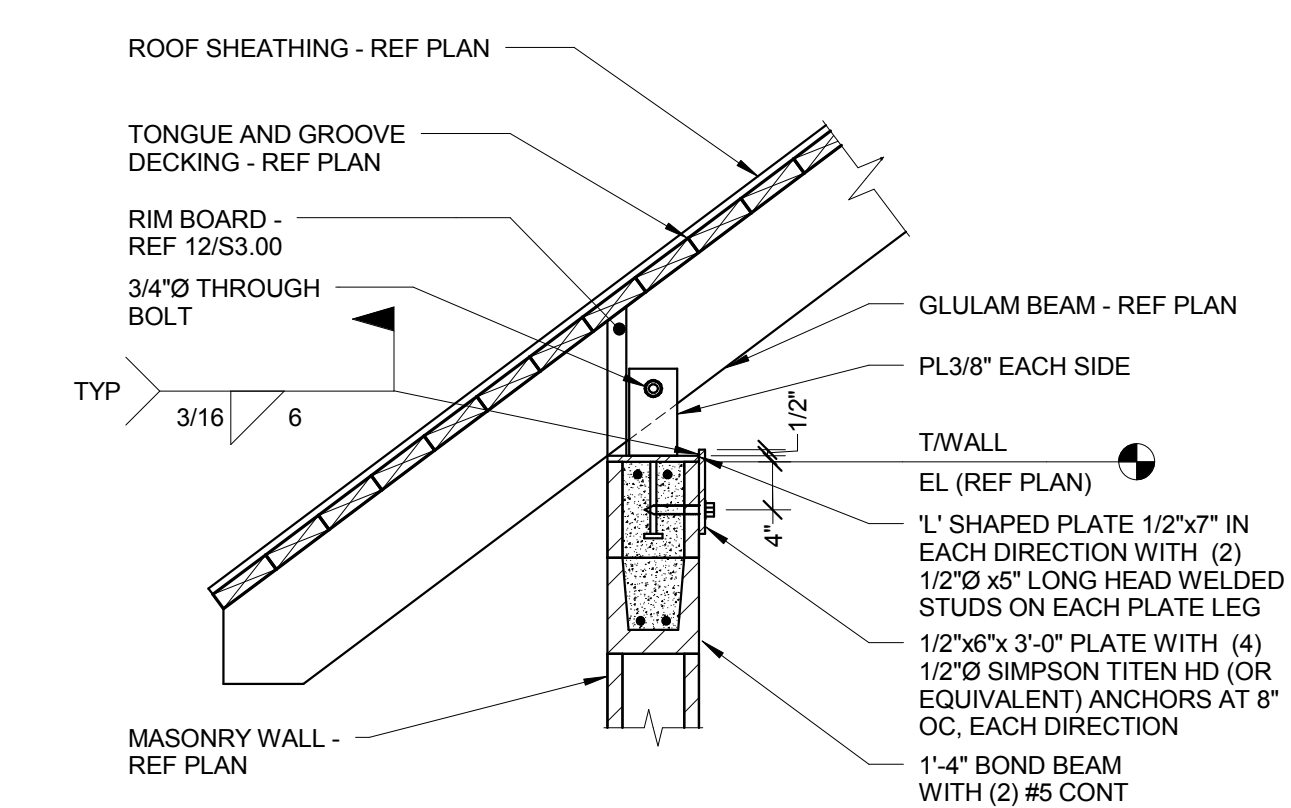
5 FRAMING DETAIL

3/4" = 1'-0"
 NOTES:
 1. EXTEND RIM BOARD TO CONTINUOUS JOIST ON EACH SIDE OF ELEVATOR AND CONNECT WITH TOE NAILS.
 2. CONNECT EACH SHAFT WALL STUD TO CFSF STUD OR TRACK WITH (1) #10 TEK SCREW.



6 FRAMING DETAIL

3/4" = 1'-0"
 NOTES:
 1. AT SIM. 2ND FLOOR CEILING. NO FLOOR ANTICIPATED.



7 HIP GLULAM BEARING CONNECTION

3/4" = 1'-0"
 NOTES:
 1. CONNECTION PLATES SHOWN ARE CONCEPTUAL. GLULAM DESIGN IS TO FINALIZE CONNECTION TO EMBED PLATE SHOWN. DESIGN CONNECTION FOR BENDING AND AXIAL LOADS FROM GLULAM MEMBER.

C:\Revit Local Files\14_0941_00_FtLeavenworth_CENTRAL_01.dwg.rvt
 2/26/2016 12:32:13 PM

No.	Revisions	Date

CONSULTANTS:
KJ ENGINEERING CONSULTANTS
 The FUTURE BUILT SMARTER®
 823 26TH AVENUE
 QUAD CITY, IL 61201
 309.788.0673
 FAX: 309.788.0967
 www.kj-engineering.com

STRUCTURAL | MECHANICAL | ELECTRICAL TECHNOLOGY | MEDICAL EQUIPMENT SOLUTIONS

I HEREBY CERTIFY THAT THIS PLAN, SPECIFICATION OR REPORT WAS PREPARED BY ME OR UNDER MY DIRECT SUPERVISION, AND THAT I AM A DULY LICENSED PROFESSIONAL ENGINEER UNDER THE LAWS OF THE STATE OF ILLINOIS.

PRINT NAME: DAN J. HUNTINGTON
 SIGNATURE:

DATE: 02-26-16
 LICENSE #: 101489

ARCHITECT/ENGINEERS:
ANDERSON ENGINEERING
 ENGINEERING • ARCHITECTURE • LAND SURVEYING ENVIRONMENTAL SERVICES • LANDSCAPE ARCHITECTURE
 AE PROJECT NO.: 13802

Anderson Engineering of Minnesota, LLC
 13605 1st Avenue North
 Suite 100
 Plymouth, MN 55441
 763-412-4000 (o) 763-412-4090 (f)
 www.ae-mn.com

Drawing Title
STRUCTURAL DETAILS

Approved: Project Director

Project Title
 LODGE REHABILITATION

Location
 FT LEAVENWORTH NATIONAL CEMETERY
 LEAVENWORTH, KS

Date
 02-25-2016

Project Number
 887CM3005

Building Number

Drawing Number
S3.02

Dwg. 41 of 67

Office of Construction and Facilities Management

VA U.S. Department of Veterans Affairs

BID SET DOCUMENTS