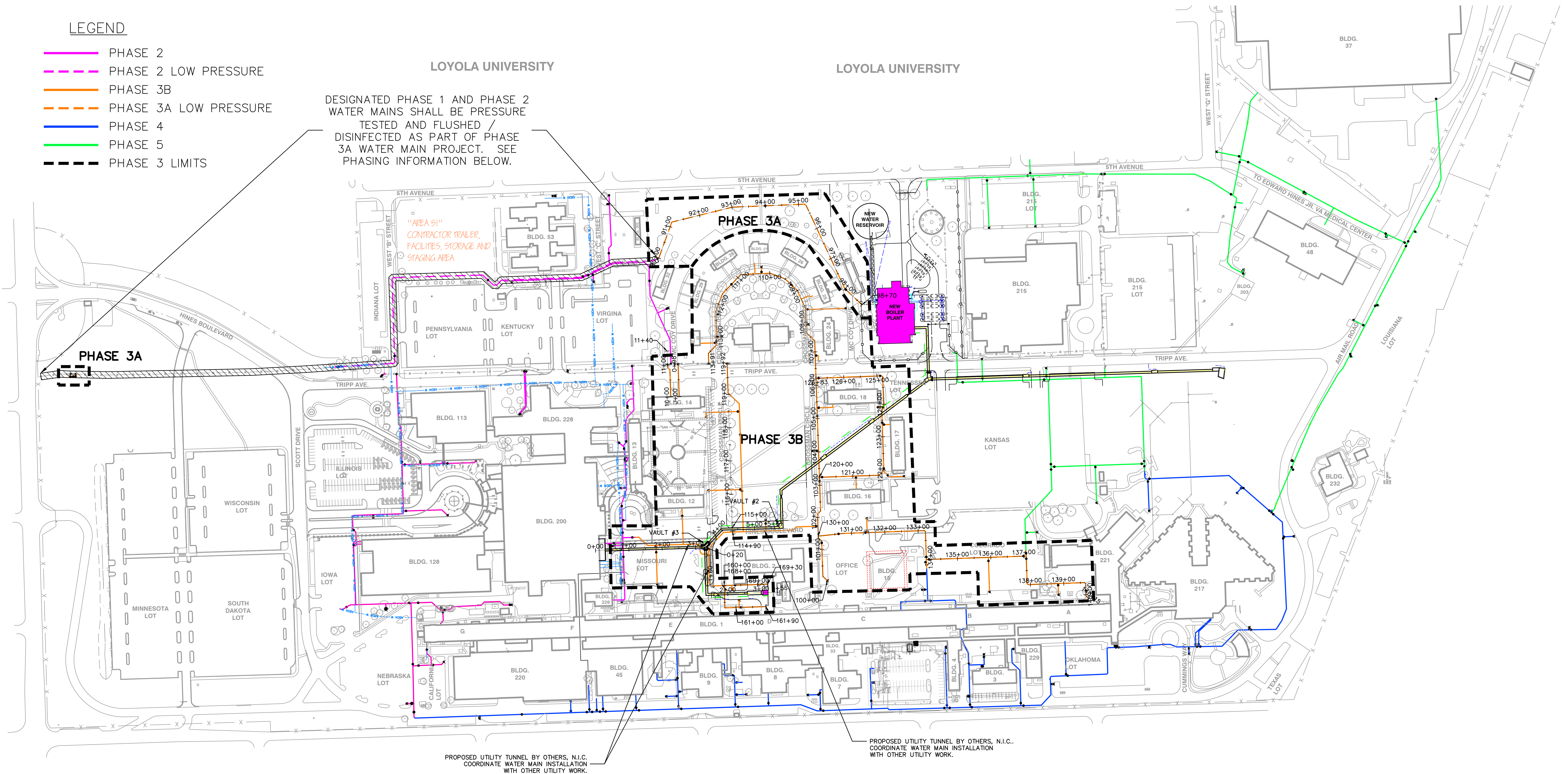


**LEGEND**

- PHASE 2
- - - PHASE 2 LOW PRESSURE
- PHASE 3B
- - - PHASE 3A LOW PRESSURE
- PHASE 4
- PHASE 5
- - - PHASE 3 LIMITS

DESIGNATED PHASE 1 AND PHASE 2  
WATER MAINS SHALL BE PRESSURE  
TESTED AND FLUSHED /  
DISINFECTED AS PART OF PHASE  
3A WATER MAIN PROJECT. SEE  
PHASING INFORMATION BELOW.



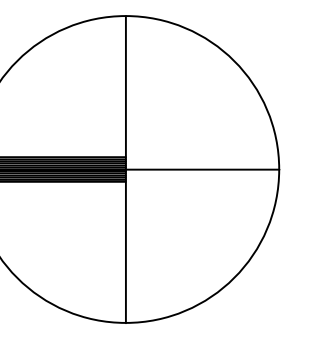
**PHASE 3A PHASES:**

**CONSTRUCTION PHASE:**

- INITIAL PRESSURE TESTING OF DESIGNATED PHASE 1 AND PHASE 2 LINES.
- PHASE 3A WATER MAIN INSTALLATION.
- CHECK VALVE BYPASS WORK.
- FIXING OF SUMP AT METER VAULT.
- POST CONSTRUCTION PRESSURE TESTING AND FLUSHING / DISINFECTION OF DESIGNATED PHASE 1 AND PHASE 2 LINES AND NEW PHASE 3A WATER MAIN.

**COMMISSIONING PHASE:**

- PROCUREMENT AND INSTALLATION OF METER INCLUDING COORDINATION WITH WATER UTILITY.
- PRESSURE TESTING OF DESIGNATED PHASE 1 AND PHASE 2 LINES AND NEW PHASE 3A WATER MAIN.
- FLUSHING / DISINFECTION OF DESIGNATED PHASE 1 AND PHASE 2 LINES AND NEW PHASE 3A WATER MAIN.
- ACTVATING DESIGNATED PHASE 1 AND PHASE 2 LINES AND NEW PHASE 3A WATER MAIN.



GRAPHIC SCALE  
0 120' 240'

Revisions	Date

**THE SIGMA GROUP**  
Single Source, Sound Solutions  
www.thisigmagroup.com  
1300 West Canal Street  
Milwaukee, WI 53233  
Phone: 414-643-4200  
Fax: 414-643-4210

**HGA**  
Architecture | Engineering | Planning  
Hammel, Green and Abrahamson, Inc.  
333 East Erie Street  
Milwaukee, Wisconsin USA 53202  
Telephone 414.278.8200 Facsimile 414.278.7734

**PHASE 3A - 100% CONSTRUCTION DOCUMENTS: JULY 29, 2016**

Drawing Title <b>PROPOSED OVERALL PHASING PLAN</b>	
Approved: Division Chief	
Approved: Service Director	

Project Title <b>VA HINES MEDICAL CENTER REPLACE EXISTING WATER MAINS PROJECT</b>		Date JULY 29, 2016
Building Number		Project No. VA# 578-15-032 HGA# 3931-001-00
Checked JBL	Drawn TPM	DRAWING NO. <b>CU005</b>
Location HINES, ILLINOIS		

Office of Facilities Management  
Department of Veterans Affairs