

225↑






FITZSIMONS PKWY

APPROX. 880'
FROM LIGHT RAIL STATION
TO SOUTH ENTRY

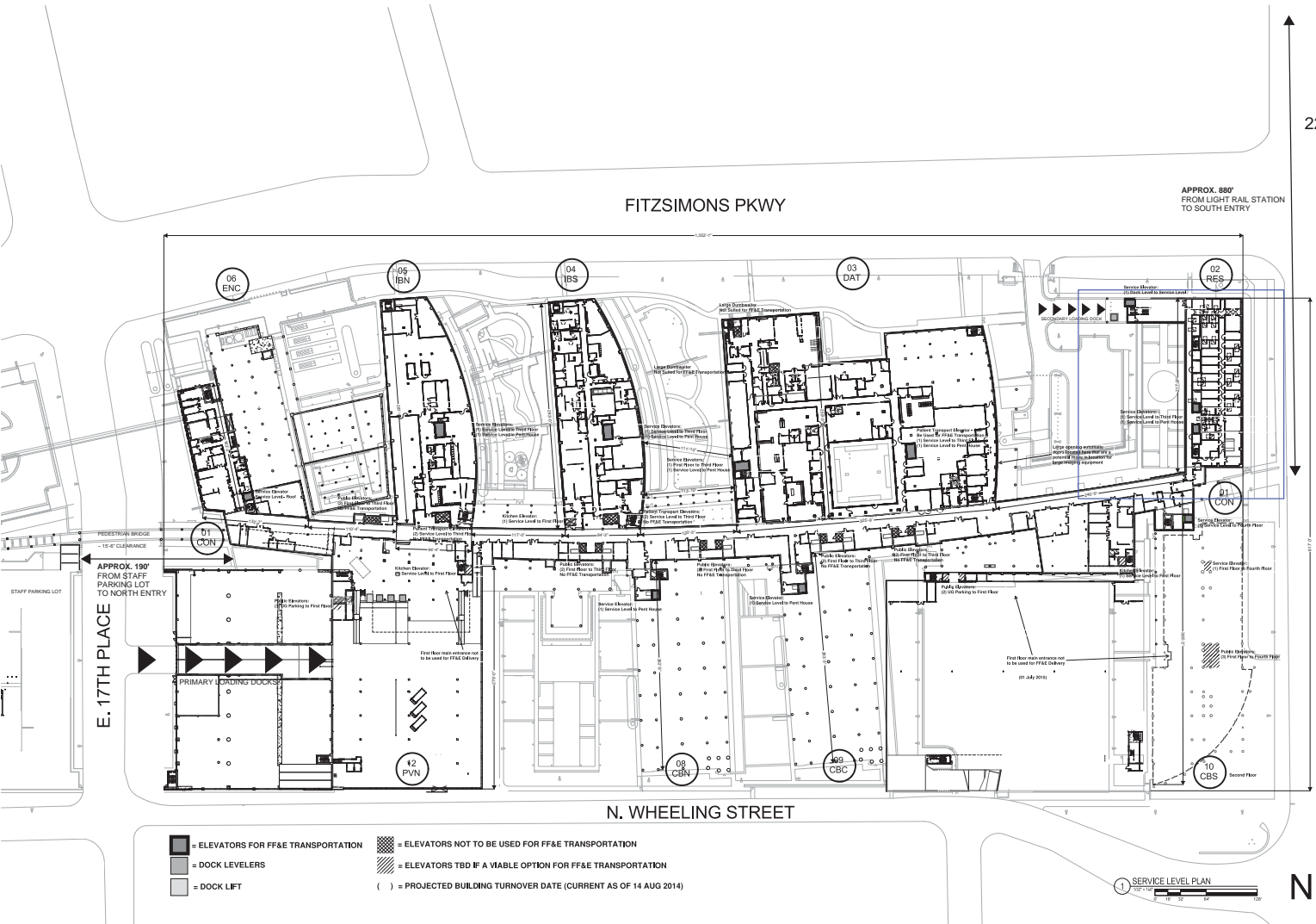
E. 17TH PLACE

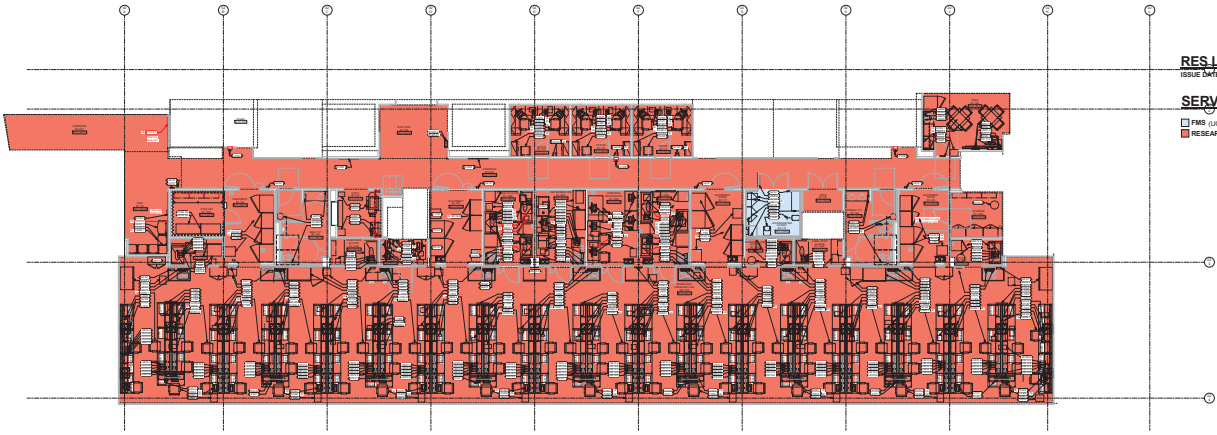
E. COLFAX AVE.

N. WHEELING STREET

-  = ELEVATORS FOR FF&E TRANSPORTATION
-  = ELEVATORS NOT TO BE USED FOR FF&E TRANSPORTATION
-  = DOCK LEVELERS
-  = ELEVATORS TBD IF A VIABLE OPTION FOR FF&E TRANSPORTATION
-  = DOCK LIFT
- () = PROJECTED BUILDING TURNOVER DATE (CURRENT AS OF 14 AUG 2014)

1 SERVICE LEVEL PLAN

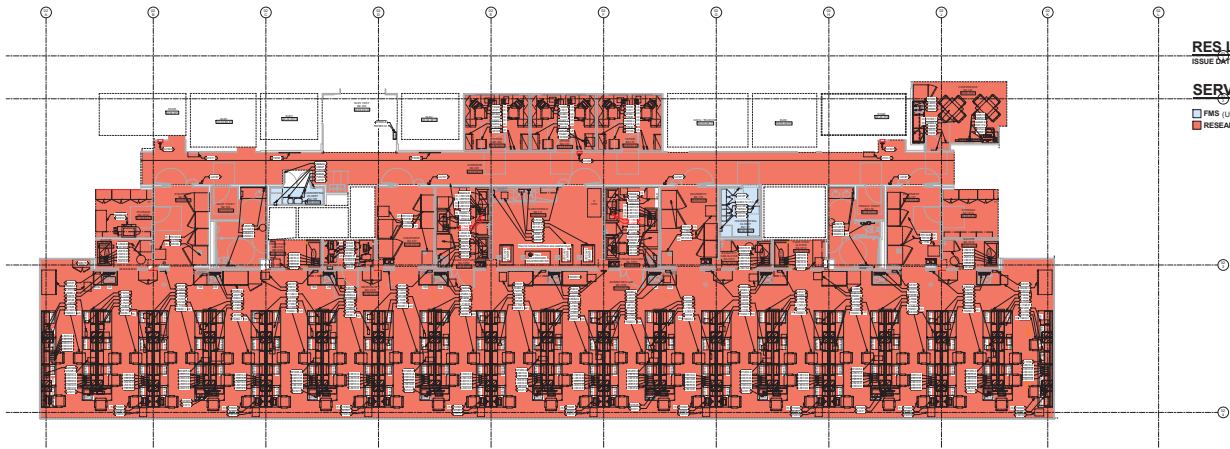




RES LEVEL 1
ISSUE DATE: 08.10.2015

SERVICE LEGEND

- FMS (JGIM 2RD OCT 6-10, 2014)
- RESEARCH (JGIM 2RD NOV 3-7, 2014)

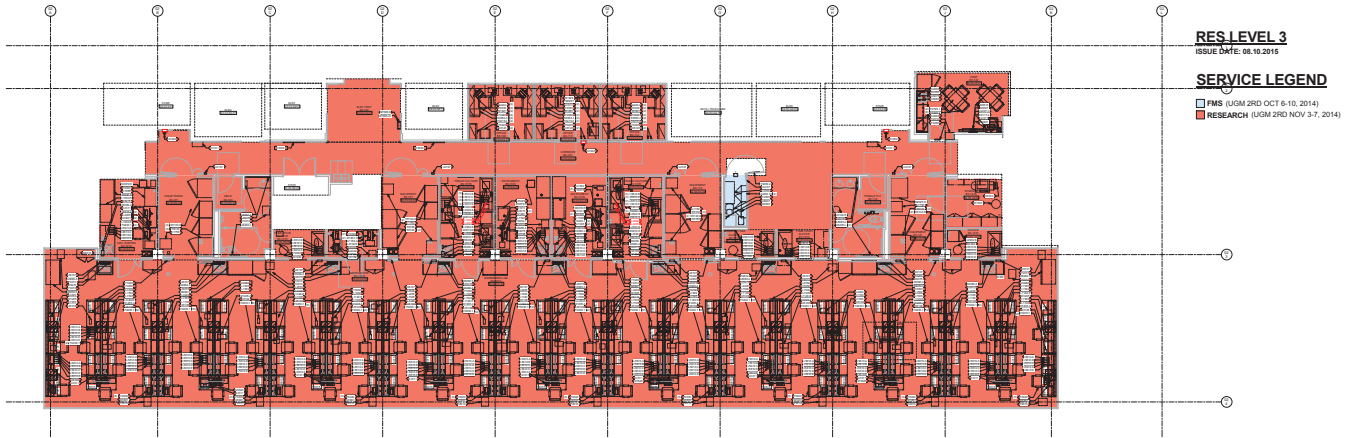


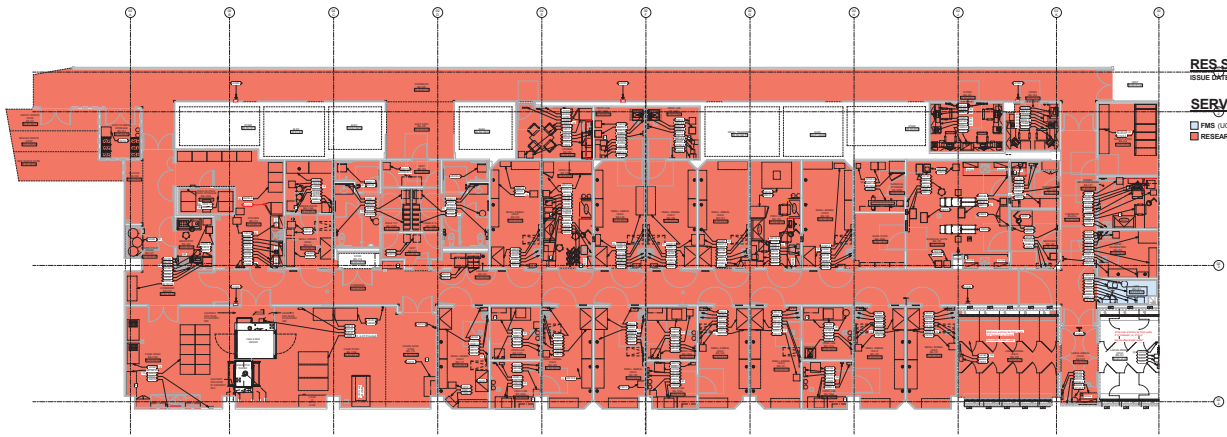
RES LEVEL 2

ISSUE DATE: 06.10.2015

SERVICE LEGEND

- FMS (UGM 2ND OCT 6-10, 2014)
- RESEARCH (UGM 2ND NOV 3-7, 2014)





RES SERVICE LEVEL
ISSUE DATE: 08.12.2015

SERVICE LEGEND
FMS (UGM 2ND OCT 6.10. 2014)
RESEARCH (UGM 2ND NOV 3.7. 2014)