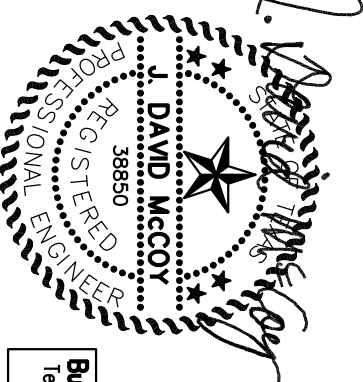


Schematic Design Submission	08/02/10
Design Development Submission	09/03/10
Construction Document Submission	11/22/10
Issue for Bids	12/9/11
ADDENDUM NO. 04	04/05/12
Revisions	Date

CONSULTANTS:



04/05/12
Burt DeLatta & McCoy, Inc.
Texas Registered Engineering Firm
F-4585

ARCHITECT/ENGINEERS:

WILSON ARCHITECTURAL GROUP
550 WESTHEIMER SUITE 800 HOUSTON, TEXAS 77056
TELEPHONE: 713.824.5744

BURNS DELATTE AND MCCOY, INC.
Pinnacle Structural
Protection Development Inc.
Brewer and Escalante

MEP ENGINEERS
STRUCTURAL ENGINEERS
FIRE PROTECTION ENGINEERS
CIVIL ENGINEERS

Drawing Title
**MECHANICAL LARGE SCALE PLANS
AND SECTIONS**

Project Title
**BUILDING II ADDITION AND
INTERIOR RENOVATIONS**

Project Number
67444-CSJ-516

Office of
Construction
and Facilities
Management

ISSUED FOR BIDS - FULLY SPRINKLERED

- 18/20 C.A. (PRIMARY AIR) DUCT UP IN CHASE TO THE FIRST FLOOR. RE: SHEET MH101 FOR CONTINUATION OF THE DUCTWORK.
- 20/24 R.A. DUCT DOWN IN CHASE FROM THE FIRST FLOOR. RE: SHEET MH101 FOR CONTINUATION OF THE DUCTWORK.
- 10/8 EXHAUST DUCT UP IN CHASE TO THE FIRST FLOOR. RE: SHEET MH101 FOR CONTINUATION OF THE DUCTWORK.
- OUTSIDE AIR INTAKE LOUVER THAT IS APPROXIMATELY 36" WIDE BY 30" HIGH. RE: SHEET MH101 FOR CONTINUATION OF THIS PIPING.
- CONNECT 16/14 O.A. DUCT TO PLENUM AND EXTEND TO THE O.A./R.A. PLENUM FOR INSPECTION AND CLEANING.
- EXTEND PIPING ABOVE CEILING IN THE CEILING PLENUM OF THE (E) BASE-MENT. RE: SHEET MH101 FOR CONTINUATION OF THIS PIPING.
- EXTEND 1/4" HWS AND HWS PIPING UP IN CHASE TO THE FIRST FLOOR. RE: SHEET MH101 FOR CONTINUATION OF PIPING.
- FAN SECTION WITH THE FAN AND MOTOR MOUNTED INTERNALLY WITH VIBRATION ISOLATION. THIS SECTION SHALL HAVE HINGED AND GASKETED HAVE A MARINE TYPE LIGHT WITH EXTERNAL TOGGLE SWITCH (FACTORY WIRE).
- COOLING COIL SECTION WITH COILED WATER COIL. RE: DETAIL #9 ON SHEET MH502 FOR VALVING AND PIPING SPECIALTIES REQUIRED AT THE CONNECTIONS AS SHOWN.
- 24" DEEP ACCESS SECTION BETWEEN THE PREHEAT COIL & THE COOLING COIL. RE: DETAIL #10 ON SHEET MH502 FOR VALVING AND PIPING SPECIALTIES REQUIRED AT THE CONNECTIONS AS SHOWN.
- PREHEAT SECTION WITH STEAM COIL. EXTEND 1/4" NPS PIPING TO THE COIL CONNECTION. EXTEND 1/4" LPR PIPING FROM THE STEAM TRAP DIS-CHARGE TO THE INLET AT THE RECEIVER OF THE STEAM CONDENSATE RETURN UNIT.
- SECTION TO HAVE HINGED AND GASKETED FILTER ACCESS DOOR ON EACH END.

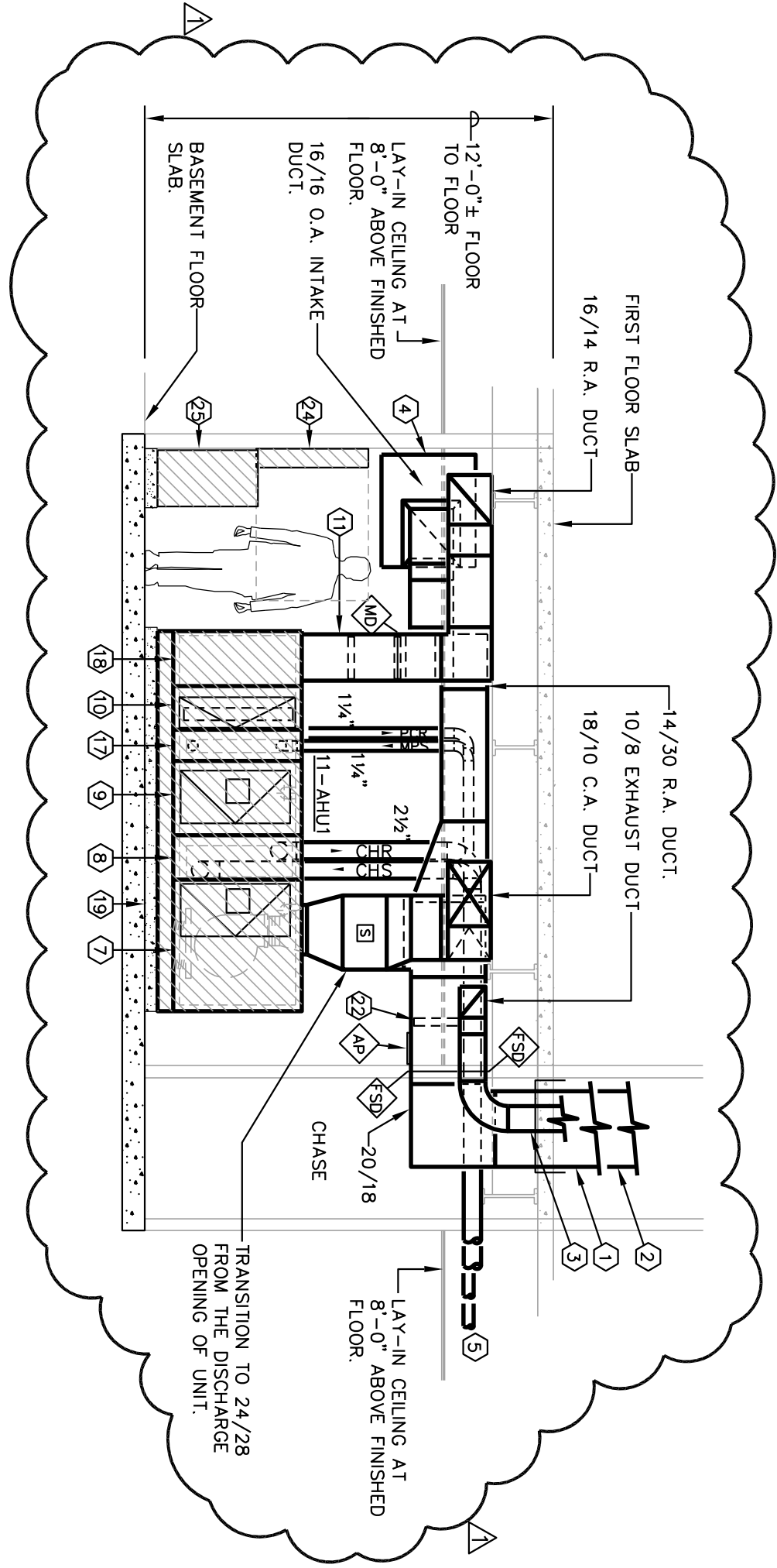
- EXTEND 16/14 R.A. DUCT DOWN INTO THE TOP OF THE O.A./R.A. PLENUM SECTION OF UNIT. INSTALL MANUAL VOLUME DAMPER AND AIR FLOW MEASURING DEVICE IN THE VERTICAL SECTION OF THE DUCTWORK. RE: AIR INFORMATION.
- EXTEND 16/14 O.A. DUCT DOWN INTO THE TOP OF THE O.A./R.A. PLENUM SECTION OF 1A. INSTALL MANUAL VOLUME DAMPER AND AIR FLOW MEASURING DEVICE IN THE VERTICAL SECTION OF THE DUCTWORK. RE: AIR INFORMATION.
- EXTEND 30/14 R.A. DUCT DOWN INTO THE TOP OF THE O.A./R.A. PLENUM SECTION OF 1A. INSTALL MANUAL VOLUME DAMPER AND AIR FLOW MEASURING DEVICE IN THE VERTICAL SECTION OF THE DUCTWORK. RE: AIR INFORMATION.
- FURNISH AND INSTALL STEAM CONDENSATE RETURN UNIT, 11-CRU, AT THIS APPROXIMATE LOCATION. RE: INSTALLATION DETAIL ON SHEET MH503 FOR VALVING AND PIPING SPECIALTIES REQUIRED AT THE CONNECTIONS AS SHOWN. PROVIDE 2" VENT FROM THE RECEIVER TO ATMOSPHERE (OUTSIDE OF BUILDING). EXTEND 1/4" VALVED DRAIN PIPING FROM THE DRAIN CONNECTION ON RECEIVER TERMINATING AT THE FLOOR DRAIN.
- AREA REQUIRED FOR THE REMOVAL OF THE COOLING COIL FROM THE UNIT FOR CLEANING, REPLACEMENT, ETC.
- PROPOSED LOCATION FOR FLOOR DRAIN. RE: PIPING DRAWINGS. CONNECTION OF UNIT AND TERMINAL COUPLER'S FLOOR DRAIN. TAP DRAIN PIPING AT THE CONNECTION TO UNIT. RE: DRAIN DETAIL ON SHEET MH503 FOR FURTHER INFORMATION.
- PREHEAT SECTION WITH STEAM COIL. EXTEND 1/4" NPS PIPING TO THE COIL CONNECTION. EXTEND 1/4" LPR PIPING FROM THE STEAM TRAP DIS-CHARGE TO THE INLET AT THE RECEIVER OF THE STEAM CONDENSATE RETURN UNIT.
- 18" DEEP REINFORCED SHEET METAL R.A./O.A. PLENUM SECTION. DOUBLE WALL CONSTRUCTION AS TYPICAL FOR THE OTHER SECTIONS OF THE UNIT.

KEYED PLAN NOTES

- PROVIDE A 4" THICK, REINFORCED CONCRETE HOUSEKEEPING PAD FOR THIS FLOOR-MOUNTED EQUIPMENT. THE CONCRETE PAD SHALL EXTEND A MINIMUM OF 2' BEYOND THE EDGES OF THE EQUIPMENT.
- WALL-MOUNT VARIABLE FREQUENCY DRIVE (VFD) FOR THE AIR HANDLING UNIT AT THIS APPROXIMATE LOCATION. COORDINATE WITH THE ELECTRICAL REQUIREMENTS.
- WALL-MOUNT BUILDING ENERGY MANAGEMENT AND CONTROL SYSTEM PANEL AT THIS APPROXIMATE LOCATION. PROVIDE A DEDICATED 120 VOLT ELECTRICAL CIRCUIT FOR THE POWER TO THE PANEL.
- INSTALL AIR FLOW MEASURING DEVICE IN THIS HORIZONTAL SECTION. PROVIDE 2" VENT FROM THE RECEIVER TO ATMOSPHERE (OUTSIDE OF BUILDING). EXTEND 1/4" VALVED DRAIN PIPING FROM THE DRAIN CONNECTION ON RECEIVER TERMINATING AT THE FLOOR DRAIN.
- EXTEND 2" VENT PIPING FROM CONNECTION TO RECEIVER UP TROUGH CHASE TO THE ROOF. RE: SHEET MH101 FOR CONTINUATION OF THE PIPING.
- PROPOSED LOCATION FOR WALL-MOUNTED ELECTRICAL DISTRIBUTION ORDNATE WITH NEC CLEARANCE REQUIREMENTS ACCORDINGLY.
- PROPOSED LOCATION FOR PAD-MOUNTED ELECTRICAL TRANSFORMER. RE: ELECTRICAL DRAWINGS FOR FURTHER INFORMATION. COORDINATE WITH NEC CLEARANCE REQUIREMENTS.
- PROPOSED LOCATION FOR A FLOOR CLEANOUT IN THE 4" SANITARY SEWER DRAINAGE PIPING TO BE ROUTED BELOW THE PROPOSED CONCRETE HOUSEKEEPING PADS.

SECTION AT 11-AHU-1

SCALE: 1/4" = 1'-0"



ENLARGED BASEMENT MECHANICAL ROOM PLAN

SCALE: 1/4" = 1'-0"

