

| EQUIPMENT TAG | ROOM | EQUIPMENT | RESPONSIBILITY |
|---------------|--------|---------------------------|----------------|
| SECOND FLOOR | | | |
| 201 | 2C-105 | CHAIR | VV |
| 202 | 2C-105 | CHAIR | VV |
| 203 | 2C-105 | CHAIR | VV |
| 204 | 2C-105 | CHAIR | VV |
| 205 | 2C-105 | CHAIR | VV |
| 206 | 2C-105 | CHAIR | VV |
| 207 | 2C-105 | CHAIR | VV |
| 208 | 2C-105 | CHAIR | VV |
| 209 | 2C-105 | 42" DIA TABLE | VV |
| 210 | 2C-105 | 42" DIA TABLE | VV |
| 211 | 2C-105 | MICROWAVE | CC |
| 212 | 2C-105 | REFRIGERATOR | CC |
| 213 | 1C-104 | CHAIR | VV |
| 214 | 1C-104 | CHAIR | VV |
| 215 | 1C-104 | CHAIR | VV |
| 216 | 1C-104 | CHAIR | VV |
| 217 | 1C-104 | CHAIR | VV |
| 218 | 1C-104 | CHAIR | VV |
| 219 | 1C-104 | CHAIR | VV |
| 220 | 1C-104 | CHAIR | VV |
| 221 | 1C-104 | 48" DIA TABLE | VV |
| 222 | 1C-104 | 48" DIA TABLE | VV |
| 223 | 1C-104 | POOL TABLE W/ ACCESSORIES | VV |
| 224 | 1C-104 | RECESSED POOL QUE RACK | DELETED |
| 225 | 1C-101 | WASHER | CC |
| 226 | 1C-101 | WASHER | CC |
| 227 | 1C-101 | DRYER | CC |
| 228 | 1C-101 | DRYER | CC |
| 229 | C2-10 | FIRE EXTINGUISHER CABINET | CC |

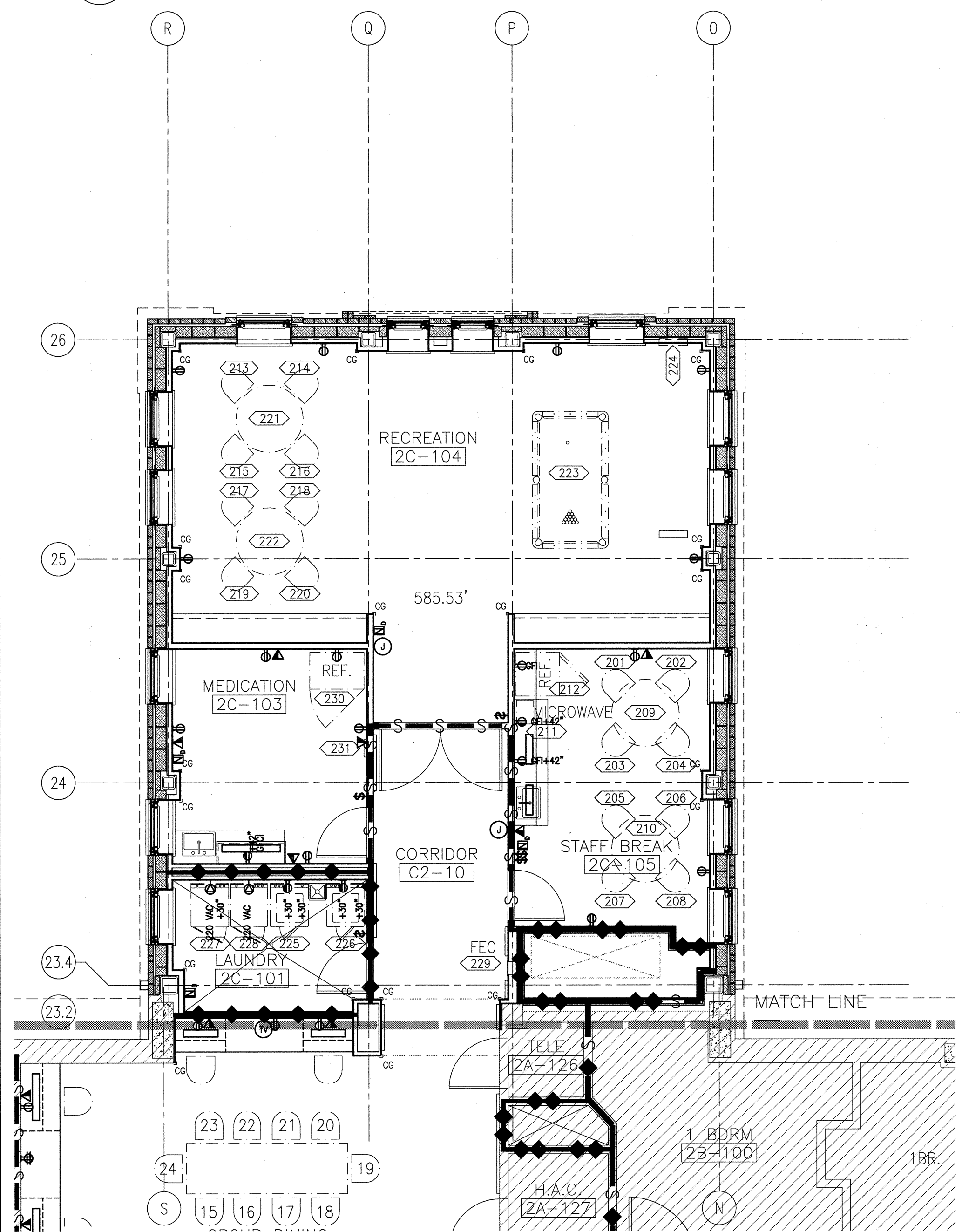
29 SECOND FLOOR EQUIPMENT LIST

SCALE: N.T.S.

| EQUIPMENT TAG | ROOM | EQUIPMENT | RESPONSIBILITY |
|---------------|--------|---------------------------|----------------|
| FIRST FLOOR | | | |
| 101 | 1C-105 | CHAIR | VV |
| 102 | 1C-105 | CHAIR | VV |
| 103 | 1C-105 | CHAIR | VV |
| 104 | 1C-105 | CHAIR | VV |
| 105 | 1C-105 | CHAIR | VV |
| 106 | 1C-105 | CHAIR | VV |
| 107 | 1C-105 | CHAIR | VV |
| 108 | 1C-105 | CHAIR | VV |
| 109 | 1C-105 | 42" DIA TABLE | VV |
| 110 | 1C-105 | 42" DIA TABLE | VV |
| 111 | 1C-105 | MICROWAVE | CC |
| 112 | 1C-105 | REFRIGERATOR | CC |
| 113 | 1C-104 | CHAIR | VV |
| 114 | 1C-104 | CHAIR | VV |
| 115 | 1C-104 | CHAIR | VV |
| 116 | 1C-104 | CHAIR | VV |
| 117 | 1C-104 | CHAIR | VV |
| 118 | 1C-104 | CHAIR | VV |
| 119 | 1C-104 | CHAIR | VV |
| 120 | 1C-104 | CHAIR | VV |
| 121 | 1C-104 | 48" DIA TABLE | VV |
| 122 | 1C-104 | 48" DIA TABLE | VV |
| 123 | 1C-104 | POOL TABLE W/ ACCESSORIES | VV |
| 124 | 1C-104 | RECESSED POOL QUE RACK | DELETED |
| 125 | 1C-101 | WASHER | CC |
| 126 | 1C-101 | WASHER | CC |
| 127 | 1C-101 | DRYER | CC |
| 128 | 1C-101 | DRYER | CC |
| 129 | C1-10 | FIRE EXTINGUISHER CABINET | CC |

24 FIRST FLOOR EQUIPMENT LIST

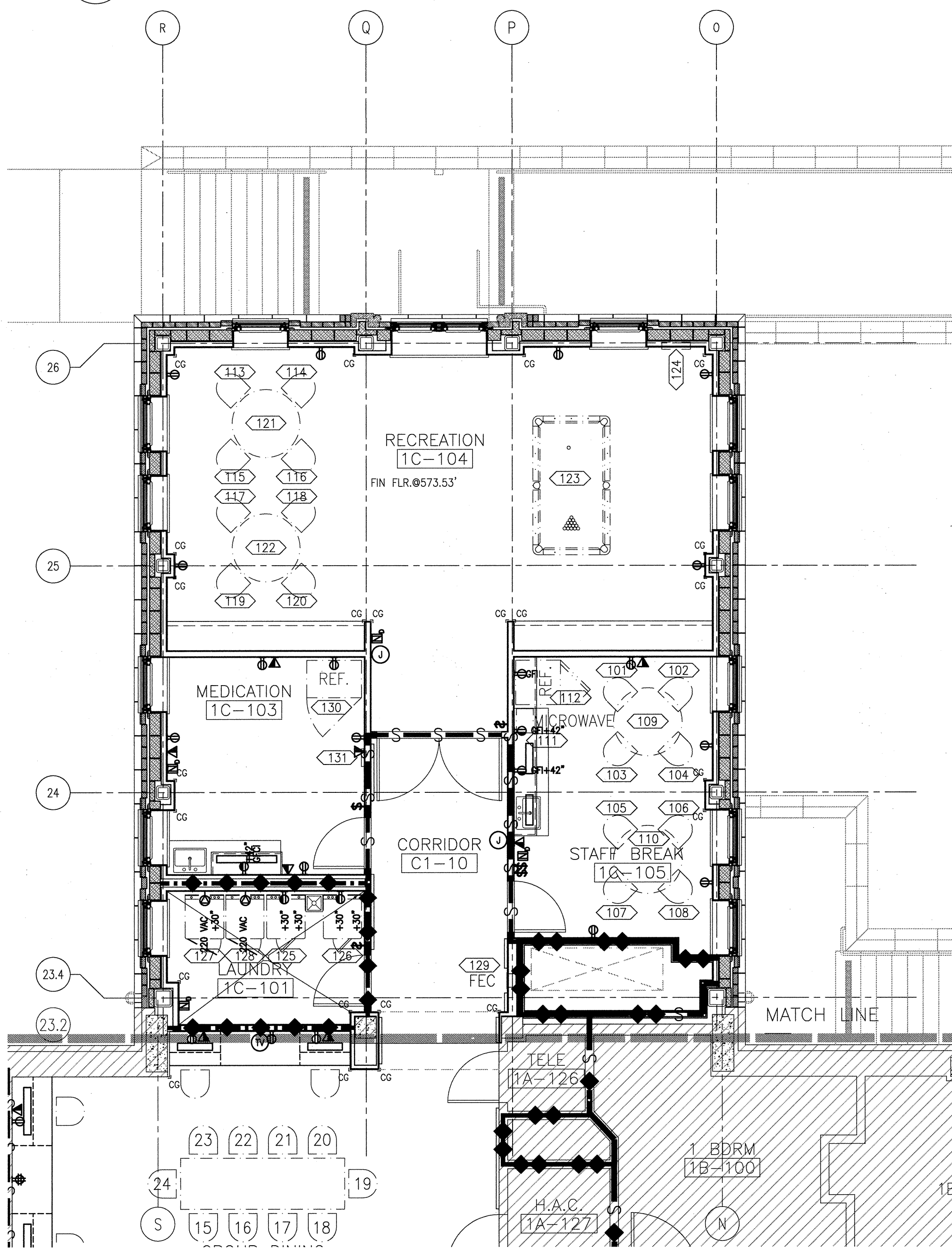
SCALE: N.T.S.



26 SECOND FLOOR EQUIPMENT PLAN

FIN. FLR. = 585.53'

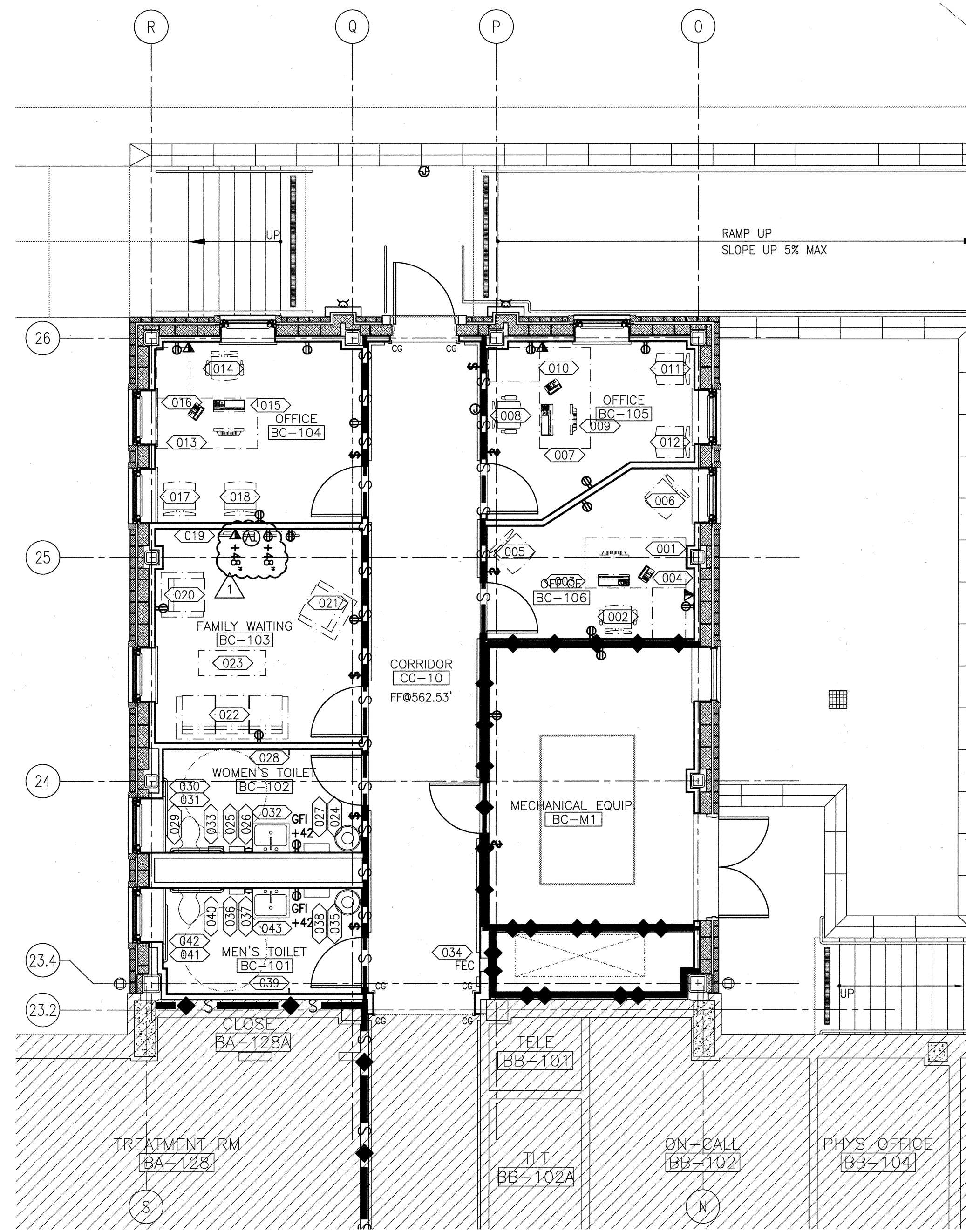
SCALE: 3/16"=1'-0"



21 FIRST FLOOR EQUIPMENT PLAN

FIN. FLR. = 573.53'

SCALE: 3/16"=1'-0"



11 BASEMENT FLOOR EQUIPMENT PLAN

FIN. FLR. = 562.53'

SCALE: 3/16"=1'-0"

1. REFER TO SHEET 11-AGI-0.01 FOR DEFINITIONS OF ABBREVIATIONS, SYMBOLS, AND MATERIALS IDENTIFICATIONS.
2. REFER TO SHEET 11-AS-1.08, 11-AS-1.09, & 11-AS-1.10 FOR REFLECTED CEILING PLANS OF THESE AREAS
3. REFER TO SHEET 11-AS-1.06 & 11-AS-1.07 FOR FLOOR EQUIPMENT PLANS OF THESE AREAS
4. REFER TO SHEETS 11-AS-3.00 FOR INFORMATION REGARDING TO EXTERIOR BUILDING ELEVATIONS

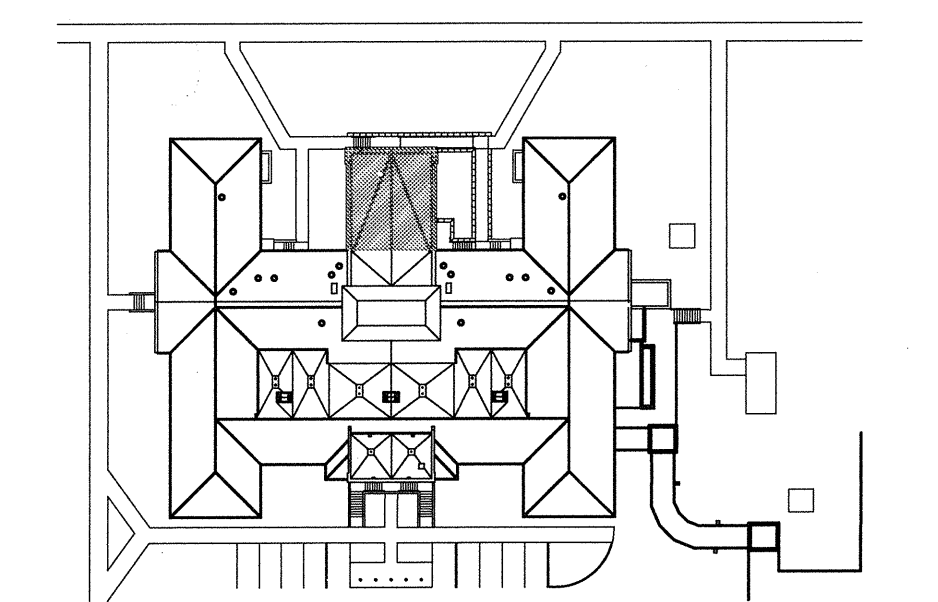
04 GENERAL NOTES

SCALE: N.T.S.

| EQUIPMENT TAG | ROOM | EQUIPMENT | RESPONSIBILITY |
|----------------|--------|------------------------------|----------------|
| BASEMENT LEVEL | | | |
| 001 | BC-106 | DESK | VV |
| 002 | BC-106 | EXECUTIVE CHAIR | VV |
| 003 | BC-106 | COMPUTER | VV |
| 004 | BC-106 | TELEPHONE | VV |
| 005 | BC-106 | VISITOR'S CHAIR | VV |
| 006 | BC-106 | VISITOR'S CHAIR | VV |
| 007 | BC-105 | DESK | VV |
| 008 | BC-105 | EXECUTIVE CHAIR | VV |
| 009 | BC-105 | COMPUTER | VV |
| 010 | BC-105 | TELEPHONE | VV |
| 011 | BC-105 | VISITOR'S CHAIR | VV |
| 012 | BC-105 | VISITOR'S CHAIR | VV |
| 013 | BC-104 | DESK | VV |
| 014 | BC-104 | EXECUTIVE CHAIR | VV |
| 015 | BC-104 | COMPUTER | VV |
| 016 | BC-104 | TELEPHONE | VV |
| 017 | BC-104 | VISITOR'S CHAIR | VV |
| 018 | BC-104 | VISITOR'S CHAIR | VV |
| 019 | BC-103 | TV AND TV MOUNT | CC |
| 020 | BC-103 | LOUNGE CHAIR | VV |
| 021 | BC-103 | LOUNGE CHAIR | VV |
| 022 | BC-103 | COUCH | VV |
| 023 | BC-103 | COFFEE TABLE | VV |
| 024 | BC-102 | TRASH RECEPTACLE | VV |
| 025 | BC-102 | PAPER TOWEL DISPENSER | VV |
| 026 | BC-102 | SOAP DISPENSER | VV |
| 027 | BC-102 | 6"x18" STAINLESS STEEL SHELF | CC |
| 028 | BC-102 | SSTL DOUBLE COAT HOOK | CC |
| 029 | BC-102 | 36" SSTL HANDICAP GRAB BAR | CC |
| 030 | BC-102 | 42" SSTL HANDICAP GRAB BAR | CC |
| 031 | BC-102 | TOILET TISSUE DISPENSER | VV |
| 032 | BC-102 | 24x36 SSTL FRAMED MIRROR | CC |
| 033 | BC-102 | SANITARY NAPKIN DISPOSAL | CC |
| 034 | C0-10 | FIRE EXTINGUISHER CABINET | CC |
| 035 | BC-101 | TRASH RECEPTACLE | VV |
| 036 | BC-101 | SSTL PAPER TOWEL DISPENSER | VV |
| 037 | BC-101 | SSTL SOAP DISPENSER | VV |
| 038 | BC-101 | 6"x18" STAINLESS STEEL SHELF | CC |
| 039 | BC-101 | SSTL DOUBLE COAT HOOK | CC |
| 040 | BC-101 | 36" SSTL HANDICAP GRAB BAR | CC |
| 041 | BC-101 | 42" SSTL HANDICAP GRAB BAR | CC |
| 042 | BC-101 | TOILET TISSUE DISPENSER | VV |
| 043 | BC-101 | 24x36 SSTL FRAMED MIRROR | CC |

02 BASEMENT LEVEL EQUIPMENT LIST

SCALE: N.T.S.



KEY PLAN

| | |
|----------------------------------|----------|
| SCHEMATIC DESIGN SUBMISSION | 08/02/10 |
| DESIGN DEVELOPMENT SUBMISSION | 09/03/10 |
| CONSTRUCTION DOCUMENT SUBMISSION | 11/22/10 |
| ISSUED FOR BIDS | 12/19/11 |
| AMENDMENT NO. 04 | 04/05/12 |
| Revisions: | Date |

CONSULTANTS:



ARCHITECT/ENGINEERS:

WILSON ARCHITECTURAL GROUP

500 WESTHEIMER, SUITE 200 HOUSTON, TEXAS 77056 TELEPHONE (713) 621-6704

MEP ENGINEERS
STRUCTURAL ENGINEERS
FIRE PROTECTION ENGINEERS
CIVIL ENGINEERS

BURNS DeLATTIE and McCOY, INC.
PINNACLE STRUCTURAL
PROTECTION DEVELOPMENT INC.
BREWER AND ESCALANTE

DO NOT SCALE THESE DRAWINGS. G.C. TO FIELD VERIFY DIMENSIONS

Drawing Title
BASEMENT, FIRST, & SECOND FLOOR
EQUIPMENT PLANS - NEW ADDITION

Approved Project Director

Project Title
BUILDING 11 ADDITION &
INTERIOR RENOVATIONS

Location
WACO, TEXAS

Date
19 DEC 2011

Checked

Drawn

ISSUED FOR BIDS AMENDMENT NO. 04 FULLY SPRINKLERED

Project Number
674A4-CSI-516

Building Number
11

Drawing Number
11-AS-1.06R

Dwg. of

Office of
Construction and
Facilities
Management

