

## LIQUID MOVERS - PHOTOS



**D16**  
NOT TO SCALE  
BUILDING 16, BASEMENT MECHANICAL ROOM

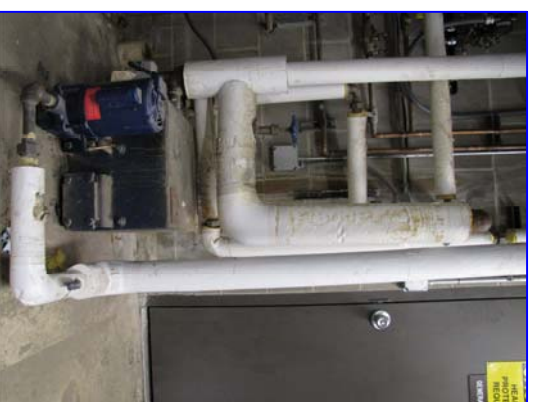


**E1**  
NOT TO SCALE

**BUILDING 1, BASEMENT MECHANICAL ROOM,**



**F11**  
NOT TO SCALE



**BUILDING 28**

**G28**

NOT TO SCALE



**H5**  
NOT TO SCALE

**BUILDING 5, GROUND FLOOR, ROOM A12**

[illegible]